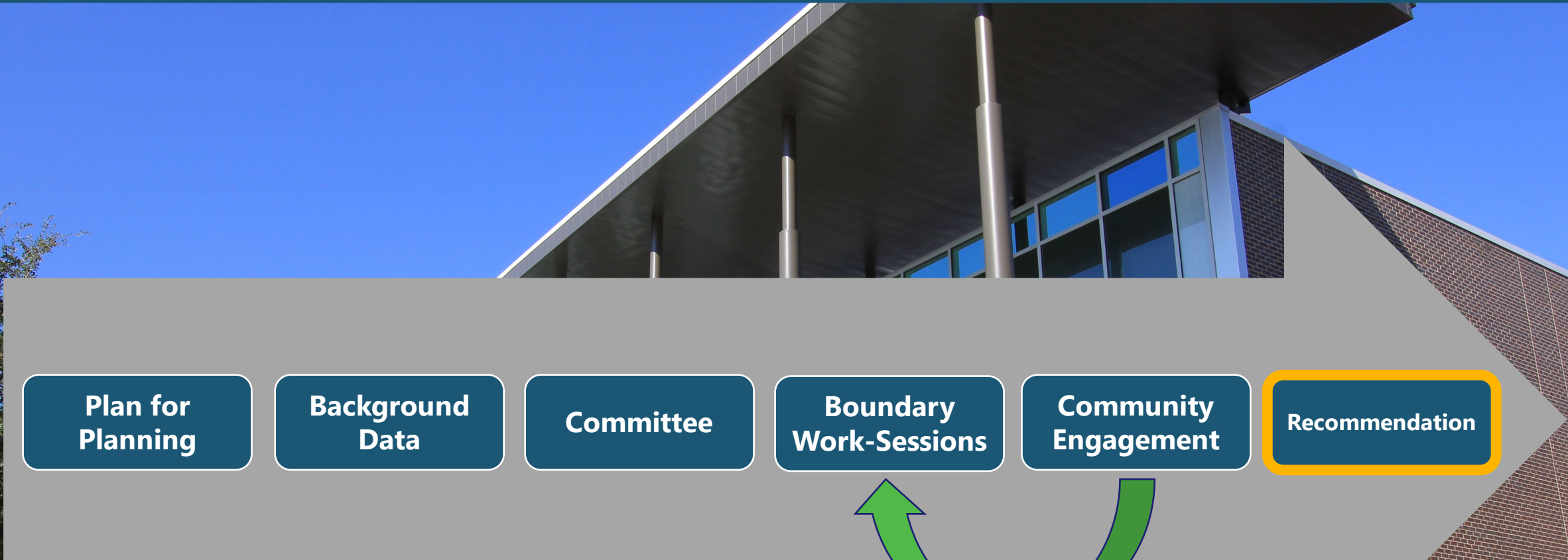


## CPS Attendance Area Changes - Recommendation

Columbia Public Schools | July 8, 2024



# Attendance Area Planning Process



**Plan for  
Planning**

**Background  
Data**

**Committee**

**Boundary  
Work-Sessions**

**Community  
Engagement**

**Recommendation**

# Board of Education Attendance Area Change Guidelines

- Attendance areas do change and will continue to change. This work is part of a regular review of district enrollment patterns.
- The attendance area should anticipate future growth of neighborhoods. A walkable and bikeable school is important, but may not always be possible.
- The attendance area seeks to reflect the composition of the Columbia Public Schools community.
- The board recognizes the power of a school to create a community. Accessibility for families is important (volunteering and attending school functions are easier when the school is near).
- Consider the time students spend on a bus and the distance traveled to and from school.
- Consider attendance areas boundary lines that follow natural/man-made boundaries.
- Consider a transfer policy that allows incoming 5<sup>th</sup>, 8<sup>th</sup>, and 12<sup>th</sup> graders to remain at their previous school and policies that allow siblings to remain.

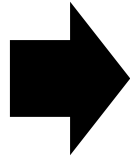
# Community/Committee Engagement

## Focus Groups

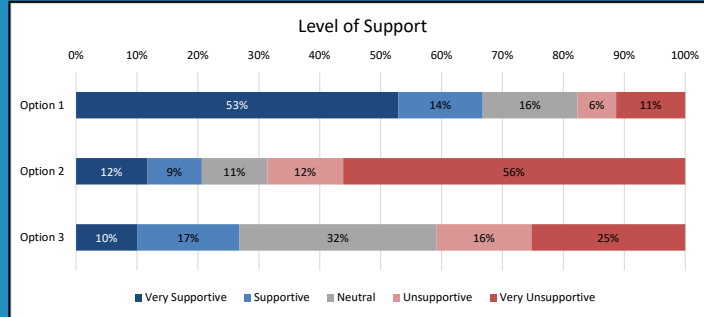
**236 applications**

**61 assigned**

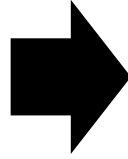
Provided feedback on attendance area change themes. Feedback used to create initial options.



## Phase 1 Attendance Area Changes

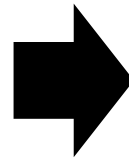


**983 Responses**

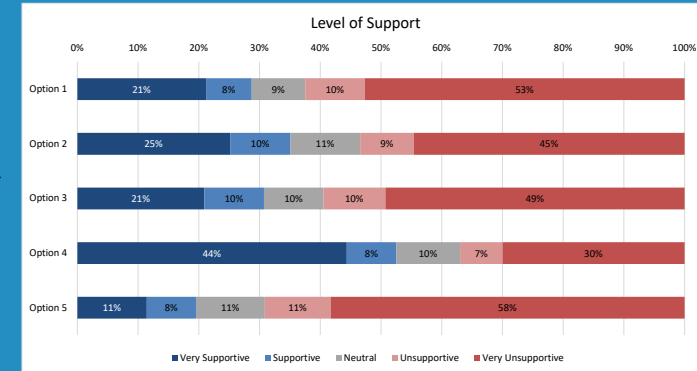


## Committee

Reviewed 8 options for phases 2 & 3; provided feedback to narrow to 5



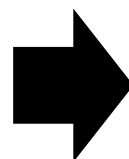
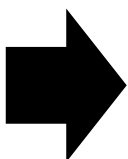
## Phases 2 & 3 Initial Options



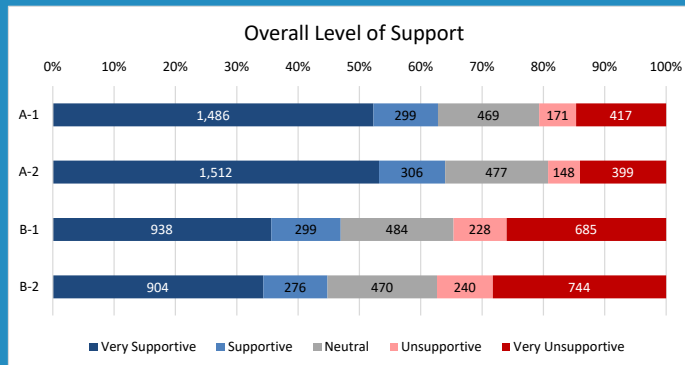
**2,219 Responses**

## Committee

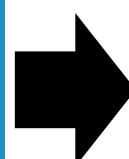
Reviewed community feedback, provided feedback on what options/changes should move forward



## Phases 2 & 3 Final Options

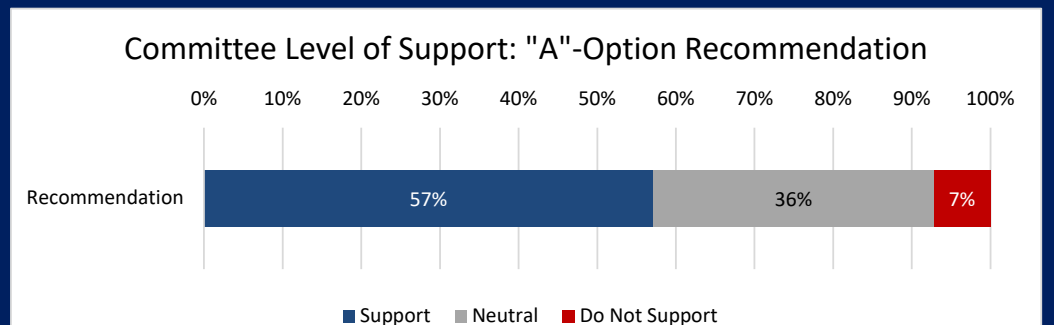


**1,111 Responses**



## Committee

Reviewed community feedback, provided feedback on potential modifications and "A"-option recommendation

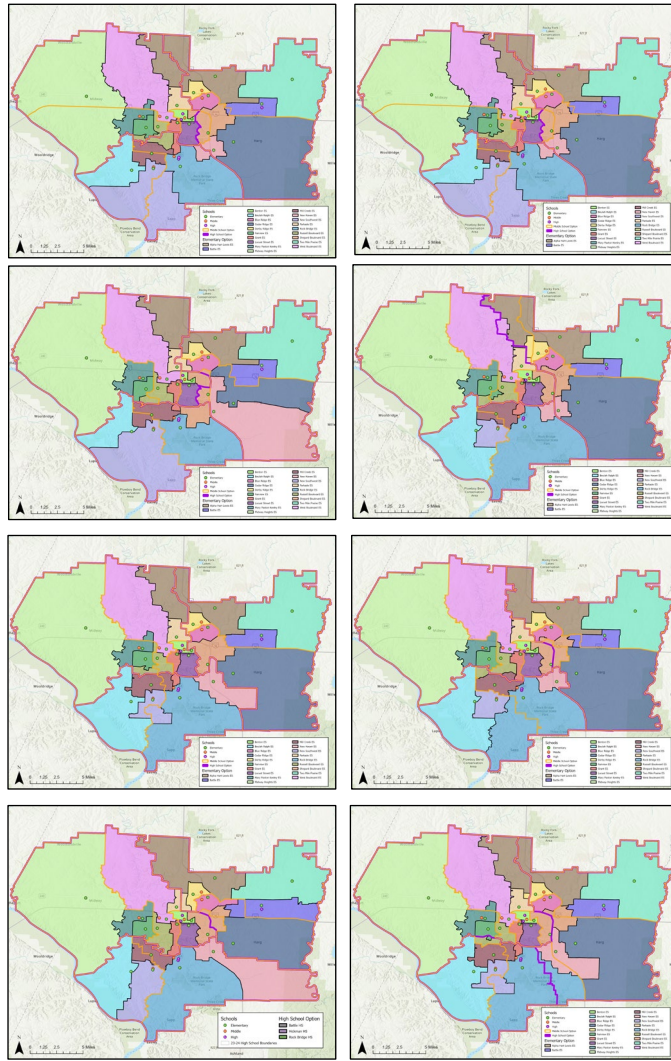


# Map Iterations

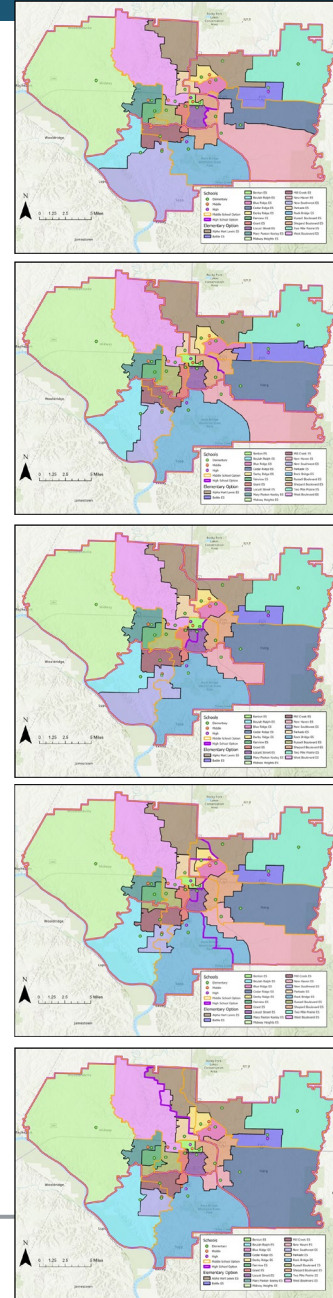
Community Feedback

Committee Feedback

Focus Groups

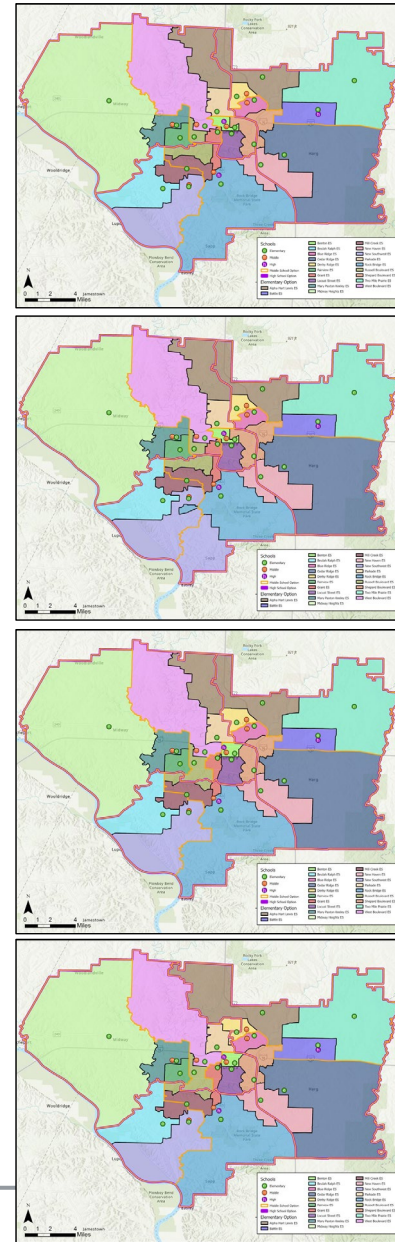


Feedback

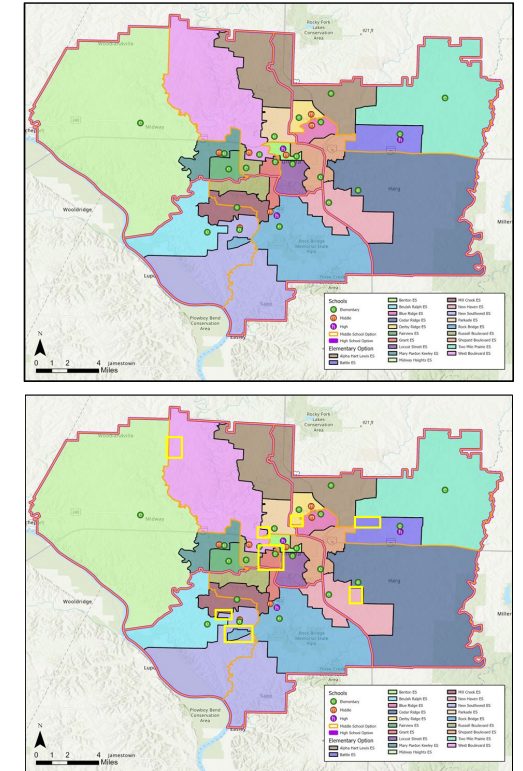


Feedback

Feedback



Feedback



Feedback



# Recommendation

| Attendance Area            | 2026-27 Capacity | K-12 Live-In Enrollment | Live-In Utilization | Diversity Index | Low SES %  | EL %       | IEP %      | 2028-29 Utilization | Live w/in Walk Zone | % Walkable   | Avg. Distance to School |
|----------------------------|------------------|-------------------------|---------------------|-----------------|------------|------------|------------|---------------------|---------------------|--------------|-------------------------|
| Alpha Hart Lewis ES        | 650              | 528                     | 81%                 | 2.27            | 56%        | 15%        | 14%        | 77%                 | 23                  | 4.4%         | 4.29                    |
| Battle ES                  | 650              | 488                     | 75%                 | 2.60            | 66%        | 10%        | 14%        | 77%                 | 14                  | 2.9%         | 2.75                    |
| Benton ES                  | 260              | 158                     | 61%                 | 2.77            | 72%        | 13%        | 17%        | 68%                 | 44                  | 27.8%        | 1.14                    |
| Beulah Ralph ES            | 650              | 522                     | 80%                 | 1.26            | 17%        | 5%         | 9%         | 68%                 | 157                 | 30.1%        | 1.89                    |
| Blue Ridge ES              | 500              | 346                     | 69%                 | 2.94            | 69%        | 20%        | 11%        | 77%                 | 158                 | 45.7%        | 1.08                    |
| Cedar Ridge ES             | 650              | 533                     | 82%                 | 1.79            | 44%        | 6%         | 8%         | 85%                 | 19                  | 3.6%         | 2.75                    |
| Derby Ridge ES             | 556              | 373                     | 67%                 | 2.77            | 58%        | 13%        | 17%        | 74%                 | 247                 | 66.2%        | 0.82                    |
| Fairview ES                | 550              | 438                     | 80%                 | 1.28            | 23%        | 7%         | 9%         | 79%                 | 301                 | 68.7%        | 0.86                    |
| Grant ES                   | 375              | 292                     | 78%                 | 1.86            | 37%        | 11%        | 9%         | 82%                 | 142                 | 48.6%        | 1.61                    |
| Locust Street ES           | 340              | 134                     | 39%                 | 2.26            | 73%        | 28%        | 9%         | 41%                 | 28                  | 20.9%        | 1.56                    |
| Mary Paxton Keeley ES      | 723              | 602                     | 83%                 | 1.97            | 31%        | 13%        | 8%         | 81%                 | 49                  | 8.1%         | 2.06                    |
| Midway Heights ES          | 295              | 253                     | 86%                 | 1.50            | 27%        | 4%         | 9%         | 83%                 | 71                  | 28.1%        | 3.32                    |
| Mill Creek ES              | 673              | 531                     | 79%                 | 1.30            | 21%        | 7%         | 8%         | 78%                 | 58                  | 10.9%        | 1.85                    |
| New Haven ES               | 293              | 232                     | 79%                 | 2.36            | 55%        | 23%        | 11%        | 79%                 | 88                  | 37.9%        | 1.10                    |
| Parkade ES                 | 478              | 431                     | 90%                 | 2.08            | 52%        | 15%        | 10%        | 87%                 | 138                 | 32.0%        | 1.02                    |
| Rock Bridge ES             | 650              | 470                     | 72%                 | 2.06            | 44%        | 10%        | 11%        | 71%                 | 198                 | 42.1%        | 2.32                    |
| Russell Boulevard ES       | 650              | 527                     | 81%                 | 1.35            | 24%        | 6%         | 6%         | 86%                 | 163                 | 30.9%        | 1.71                    |
| Shepard Boulevard ES       | 652              | 502                     | 77%                 | 2.57            | 65%        | 16%        | 13%        | 78%                 | 74                  | 14.7%        | 3.02                    |
| Two Mile Prairie ES        | 195              | 173                     | 89%                 | 1.99            | 32%        | 3%         | 9%         | 89%                 | 0                   | 0.0%         | 4.96                    |
| West Boulevard ES          | 438              | 316                     | 72%                 | 2.34            | 56%        | 11%        | 12%        | 74%                 | 210                 | 66.5%        | 1.94                    |
| New Southwest ES           | 650              | 458                     | 70%                 | 1.06            | 15%        | 10%        | 7%         | 66%                 | 44                  | 9.6%         | 1.91                    |
| <b>ELEMENTARY SUBTOTAL</b> | <b>10,878</b>    | <b>8,307</b>            | <b>76%</b>          | <b>1.95</b>     | <b>43%</b> | <b>11%</b> | <b>10%</b> | <b>76%</b>          | <b>2,226</b>        | <b>26.8%</b> | <b>2.12</b>             |
| Gentry                     | 706              | 662                     | 94%                 | 1.68            | 32%        | 5%         | 8%         | 99%                 | 321                 | 48.5%        | 2.44                    |
| Jefferson                  | 659              | 335                     | 51%                 | 2.15            | 47%        | 9%         | 10%        | 56%                 | 159                 | 47.5%        | 1.05                    |
| John Warner                | 700              | 669                     | 96%                 | 1.10            | 15%        | 3%         | 8%         | 98%                 | 160                 | 23.9%        | 3.14                    |
| Lange                      | 715              | 607                     | 85%                 | 2.52            | 58%        | 9%         | 16%        | 87%                 | 207                 | 34.1%        | 3.63                    |
| Oakland                    | 675              | 568                     | 84%                 | 2.45            | 54%        | 10%        | 13%        | 97%                 | 215                 | 37.9%        | 3.69                    |
| Smithton                   | 704              | 595                     | 85%                 | 1.66            | 28%        | 9%         | 10%        | 95%                 | 263                 | 44.2%        | 3.00                    |
| West                       | 777              | 625                     | 80%                 | 1.98            | 53%        | 8%         | 17%        | 87%                 | 323                 | 51.7%        | 3.31                    |
| <b>MIDDLE SUBTOTAL</b>     | <b>4,936</b>     | <b>4,061</b>            | <b>82%</b>          | <b>1.90</b>     | <b>41%</b> | <b>7%</b>  | <b>12%</b> | <b>88%</b>          | <b>1,648</b>        | <b>40.6%</b> | <b>3.01</b>             |
| Battle                     | 1,800            | 1554                    | 86%                 | 2.49            | 47%        | 9%         | 12%        | 87%                 | 81                  | 5.2%         | 5.22                    |
| Hickman                    | 2,125            | 2081                    | 98%                 | 1.83            | 34%        | 6%         | 12%        | 107%                | 428                 | 20.6%        | 3.94                    |
| Rock Bridge                | 1,800            | 2029                    | 113%                | 1.40            | 18%        | 3%         | 7%         | 120%                | 542                 | 26.7%        | 3.54                    |
| <b>HIGH SUBTOTAL</b>       | <b>5,725</b>     | <b>5,664</b>            | <b>99%</b>          | <b>1.86</b>     | <b>33%</b> | <b>6%</b>  | <b>11%</b> | <b>105%</b>         | <b>1,051</b>        | <b>18.6%</b> | <b>4.15</b>             |
| <b>TOTAL</b>               | <b>21,539</b>    | <b>18,032</b>           | <b>84%</b>          | <b>1.91</b>     | <b>41%</b> | <b>9%</b>  | <b>12%</b> | <b>89%</b>          | <b>4,925</b>        | <b>27.3%</b> | <b>2.96</b>             |

| Elementary to Middle Feeders | Gentry | Jefferson | John Warner | Lange | Oakland | Smithton | West |
|------------------------------|--------|-----------|-------------|-------|---------|----------|------|
| Alpha Hart Lewis ES          |        |           |             | 47%   |         |          | 53%  |
| Battle ES                    |        |           |             | 100%  |         |          |      |
| Benton ES                    |        | 100%      |             |       |         |          |      |
| Beulah Ralph ES              |        |           | 100%        |       |         |          |      |
| Blue Ridge ES                |        |           |             |       | 100%    |          |      |
| Cedar Ridge ES               |        |           |             |       | 100%    |          |      |
| Derby Ridge ES               |        |           |             | 100%  |         |          |      |
| Fairview ES                  |        |           |             |       |         | 100%     |      |
| Grant ES                     | 38%    | 62%       |             |       |         |          |      |
| Locust Street ES             |        | 100%      |             |       |         |          |      |
| Mary Paxton Keeley ES        |        |           |             |       |         | 100%     |      |
| Midway Heights ES            |        |           |             |       |         | 100%     |      |
| Mill Creek ES                | 53%    |           | 47%         |       |         |          |      |
| New Haven ES                 | 61%    |           |             |       | 39%     |          |      |
| Parkade ES                   |        |           |             |       |         |          | 100% |
| Rock Bridge ES               | 100%   |           |             |       |         |          |      |
| Russell Boulevard ES         | 54%    |           |             |       |         |          | 46%  |
| Shepard Boulevard ES         |        | 37%       |             |       | 63%     |          |      |
| Two Mile Prairie ES          |        |           |             | 100%  |         |          |      |
| West Boulevard ES            |        |           |             |       |         |          | 100% |
| New Southwest ES             |        |           | 100%        |       |         |          |      |

| Students Moved |       |     |
|----------------|-------|-----|
| ES             | 1,179 | 14% |
| MS             | 277   | 7%  |
| HS             | 0     | 0%  |

| Attend Closest School |       |     |
|-----------------------|-------|-----|
| ES                    | 4,471 | 54% |
| MS                    | 2,603 | 64% |
| HS                    | 4,883 | 86% |

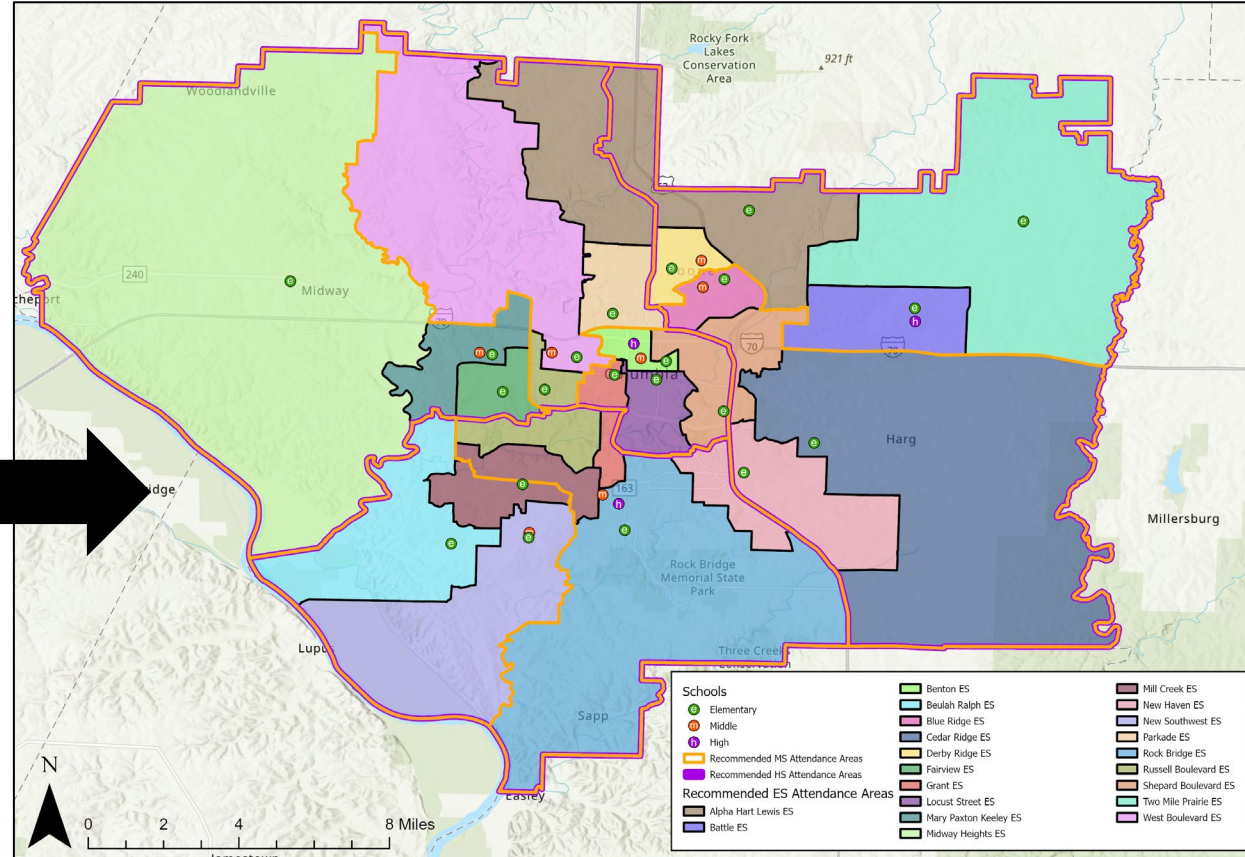
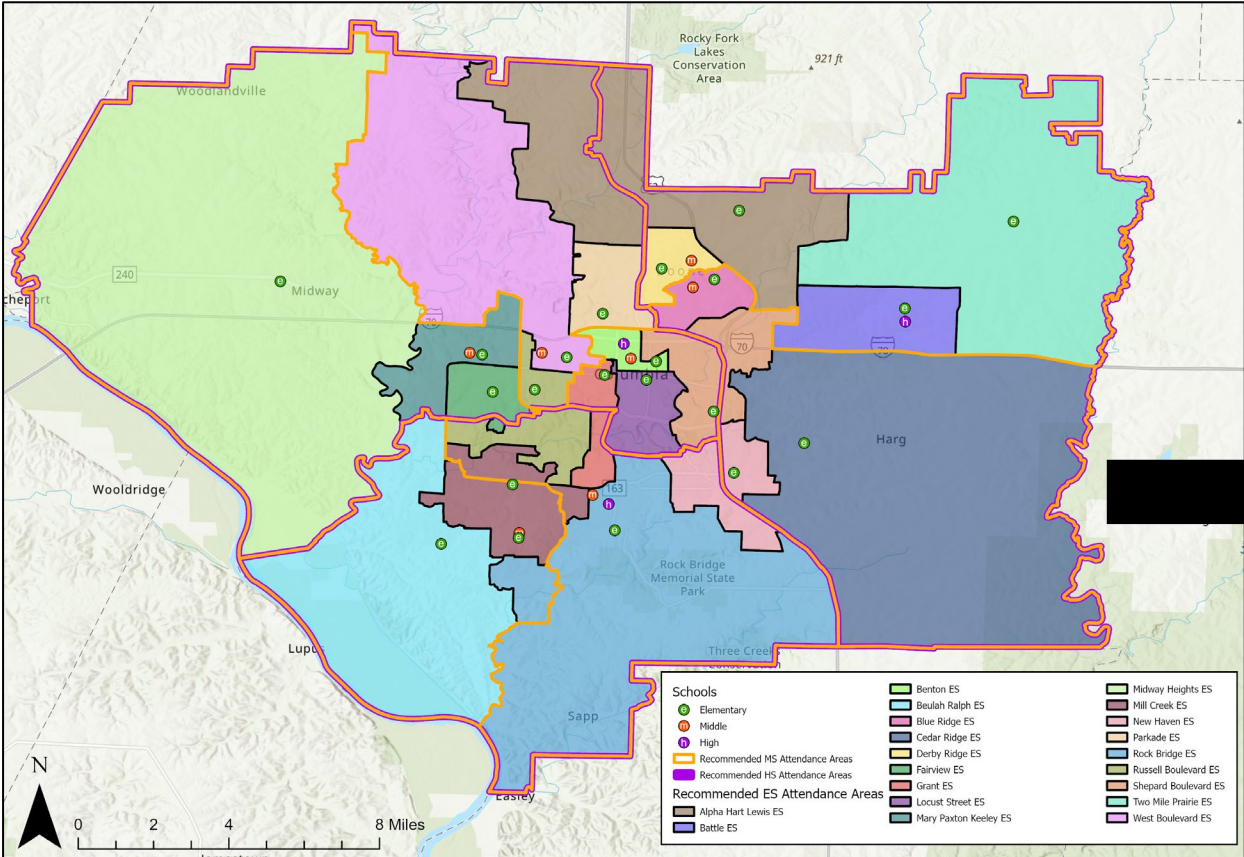
| Middle to High Feeders    | Battle | Hickman | Rock Bridge |
|---------------------------|--------|---------|-------------|
| Gentry                    |        |         | 100%        |
| Jefferson (boundary only) |        | 100%    |             |
| John Warner               |        |         | 100%        |
| Lange                     | 100%   |         |             |
| Oakland                   | 100%   |         |             |
| Smithton                  |        | 100%    |             |
| West                      |        | 100%    |             |

Note: The values on this slide represent attendance areas upon phase 3 implementation (2026-27)

# Recommendation

**Recommendation: Phase 2 (2025-26)**

**Recommendation: Phase 3 (2026-27)**





A group of five diverse school children are running happily across a grassy field. From left to right: a boy in a grey shirt and blue jeans, a boy in a white polo shirt and blue jeans with a backpack, a girl in a pink shirt and blue shorts, a boy in a blue shirt and blue jeans with a backpack, and a girl in a pink long-sleeved shirt and blue jeans. They are all smiling and appear to be in motion. In the background, there is a yellow school building with several windows and some trees. The overall scene is bright and cheerful.

# PHASE 2 CHANGES (2025-26)

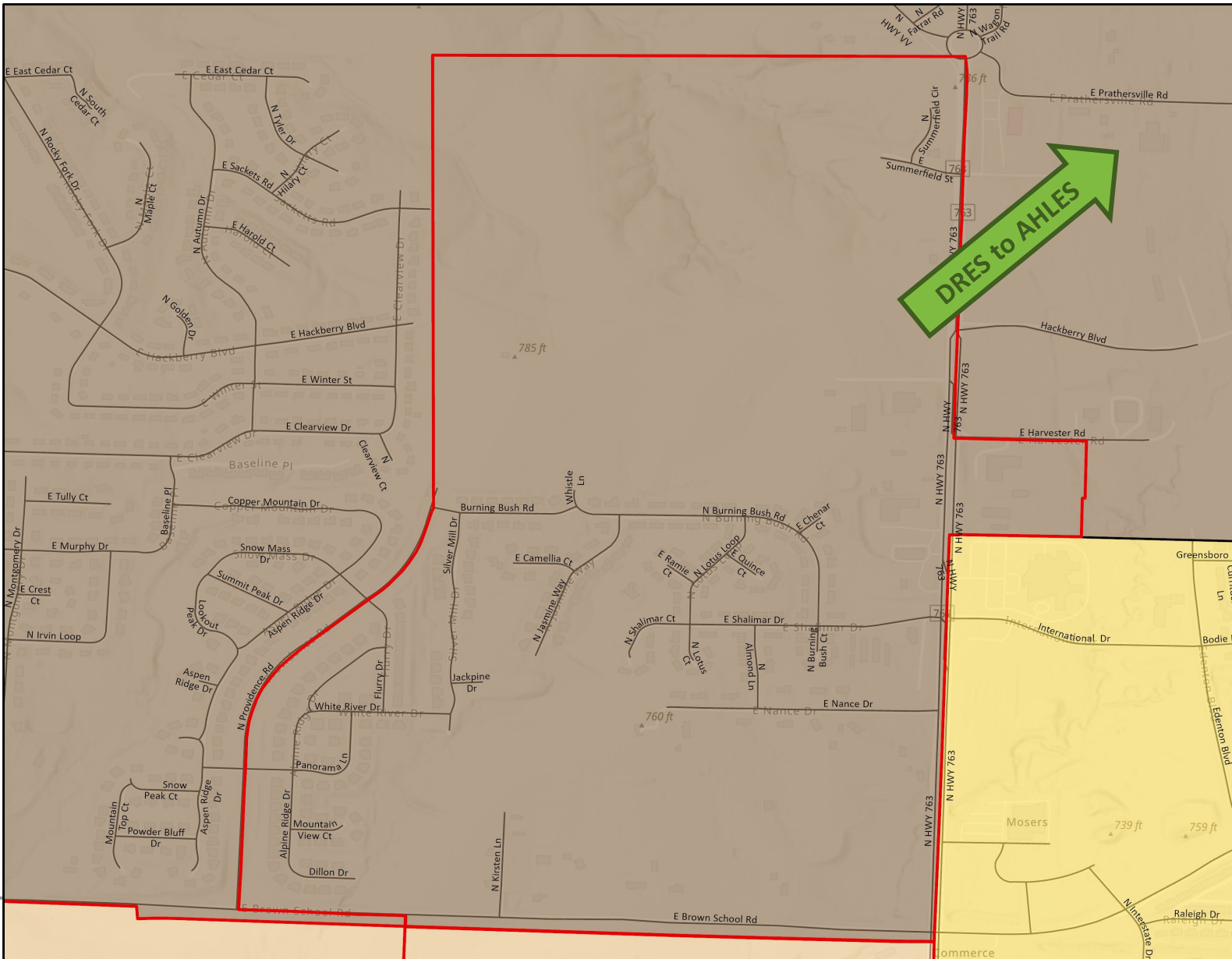
# Areas of Change

PHASE 2 (2025-26)

## Neighborhoods/Areas Moved:

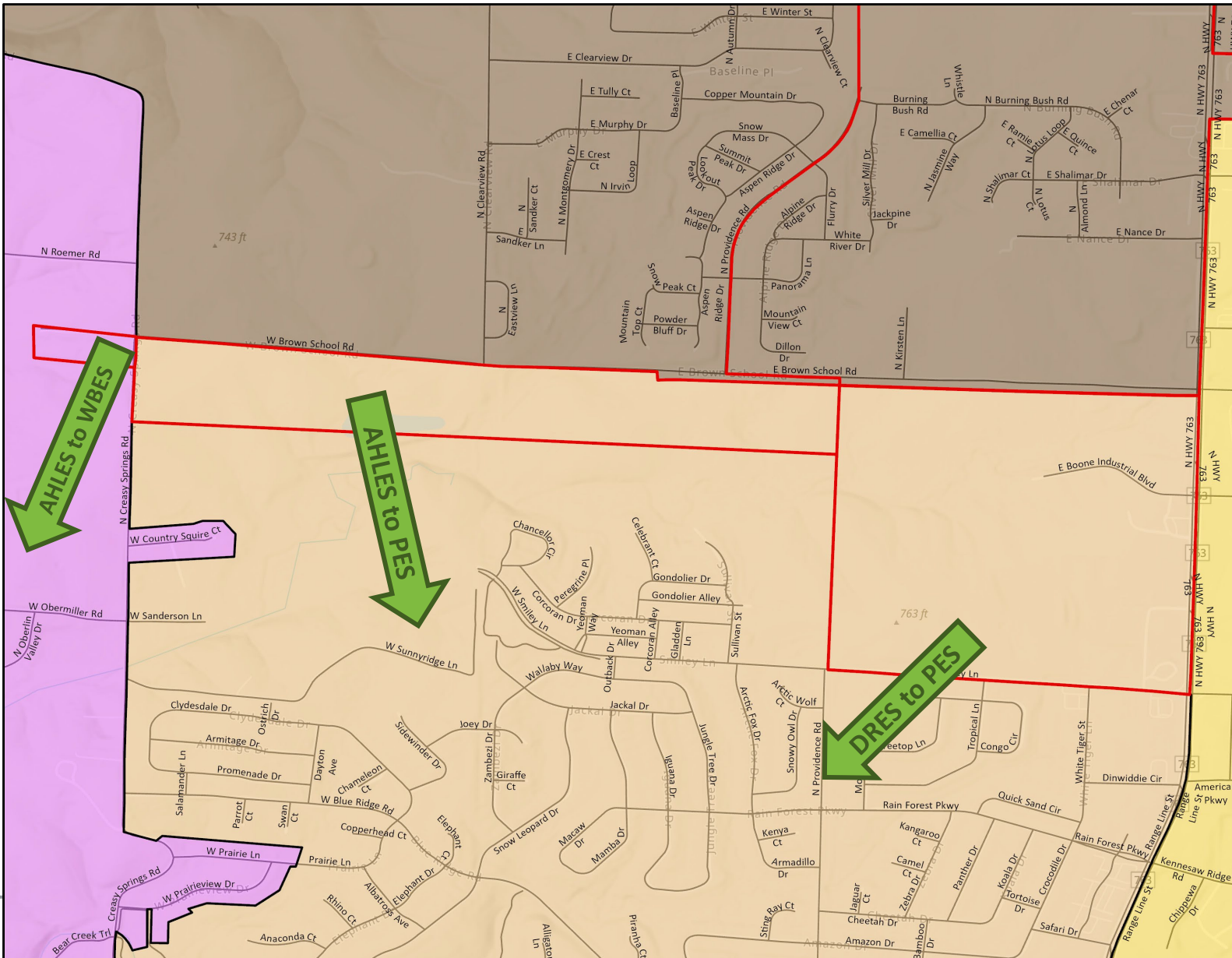
### Derby Ridge ES to Alpha Hart Lewis ES

- Cross Creek
- Ewing
- Forest Ridge
- Mordica
- Shalimar Gardens
- Summerfield



# Areas of Change

PHASE 2 (2025-26)



## Neighborhoods/Areas Moved:

### Alpha Hart Lewis ES to West Boulevard ES

- A small part of North Creasy Road, north of West Country Squire Court and south of North Roemer Road on the west side of the street.

### Alpha Hart Lewis ES to Parkade ES

- Empty lots south of Brown School Road

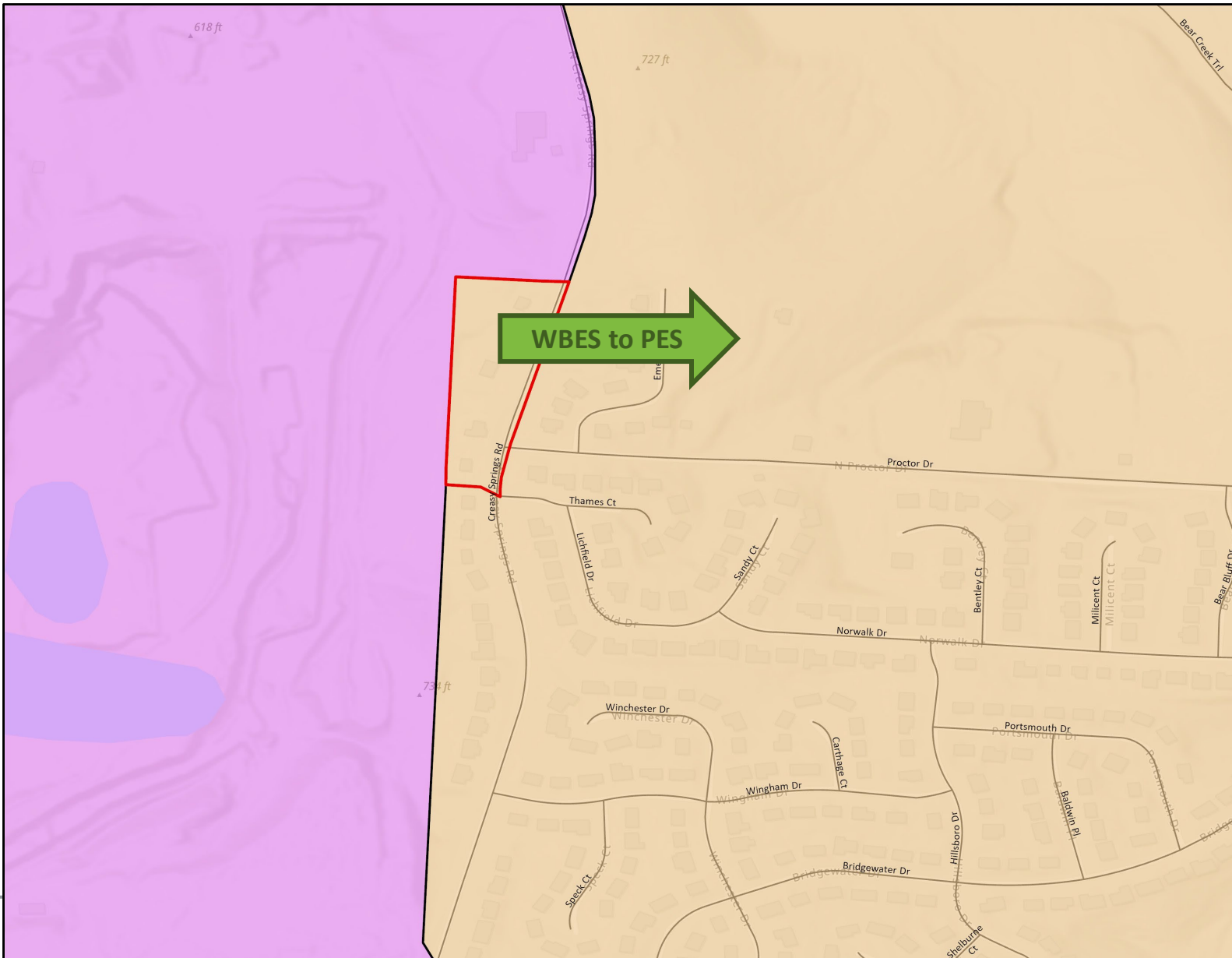
### Derby Ridge ES to Parkade ES

- Christiansen Deline
- Rangeline Crossing

No Current Students Impacted

# Areas of Change

PHASE 2 (2025-26)



## Neighborhoods/Areas Moved:

### West Boulevard ES to Parkade ES

- 5 parcels on the northwest corner of Creasy Springs Road and Proctor Drive.

No Current Students Impacted

# Areas of Change

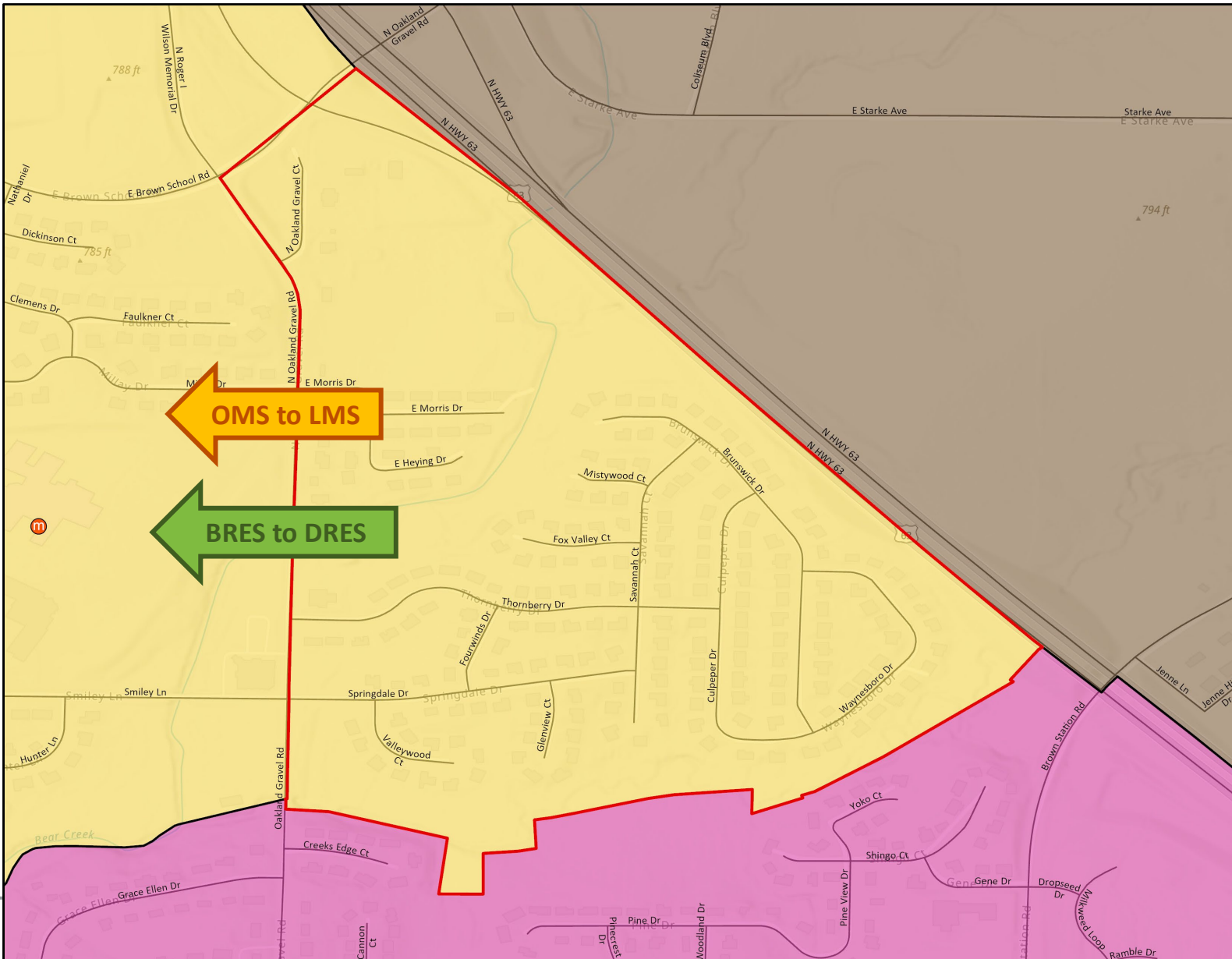
PHASE 2 (2025-26)

## Neighborhoods/Areas Moved:

**Blue Ridge ES to Derby Ridge ES**

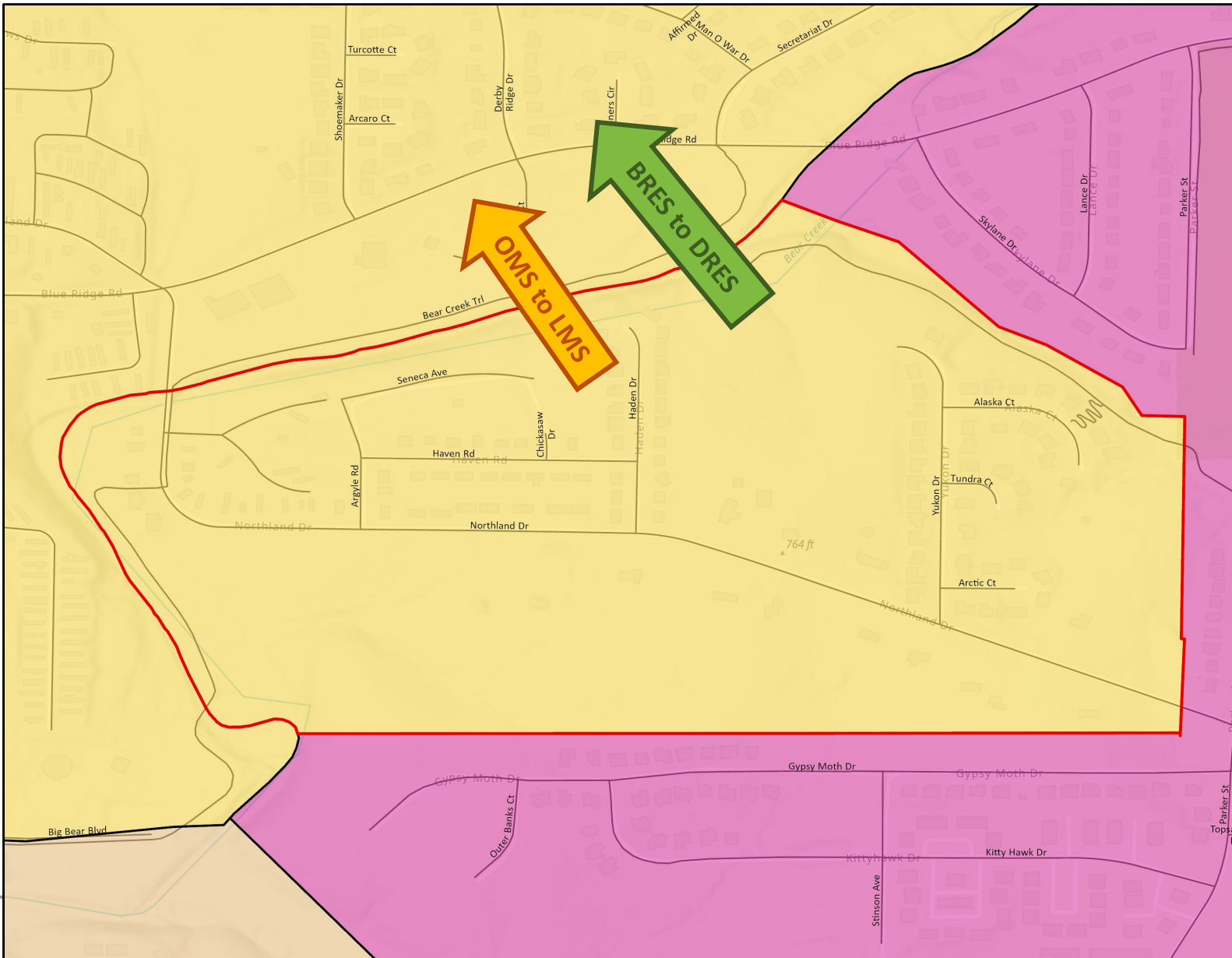
**Oakland MS to Lange MS**

- Graceland
- Jerry Morris
- Spring Dale Estates
- Spring Dale Estates Condominiums



# Areas of Change

PHASE 2 (2025-26)



## Neighborhoods/Areas Moved:

**Blue Ridge ES to Derby Ridge ES**  
**Oakland MS to Lange MS**

- E.A.'s Acre
- Haden Park
- Northland Acres
- Northland Acres Estates

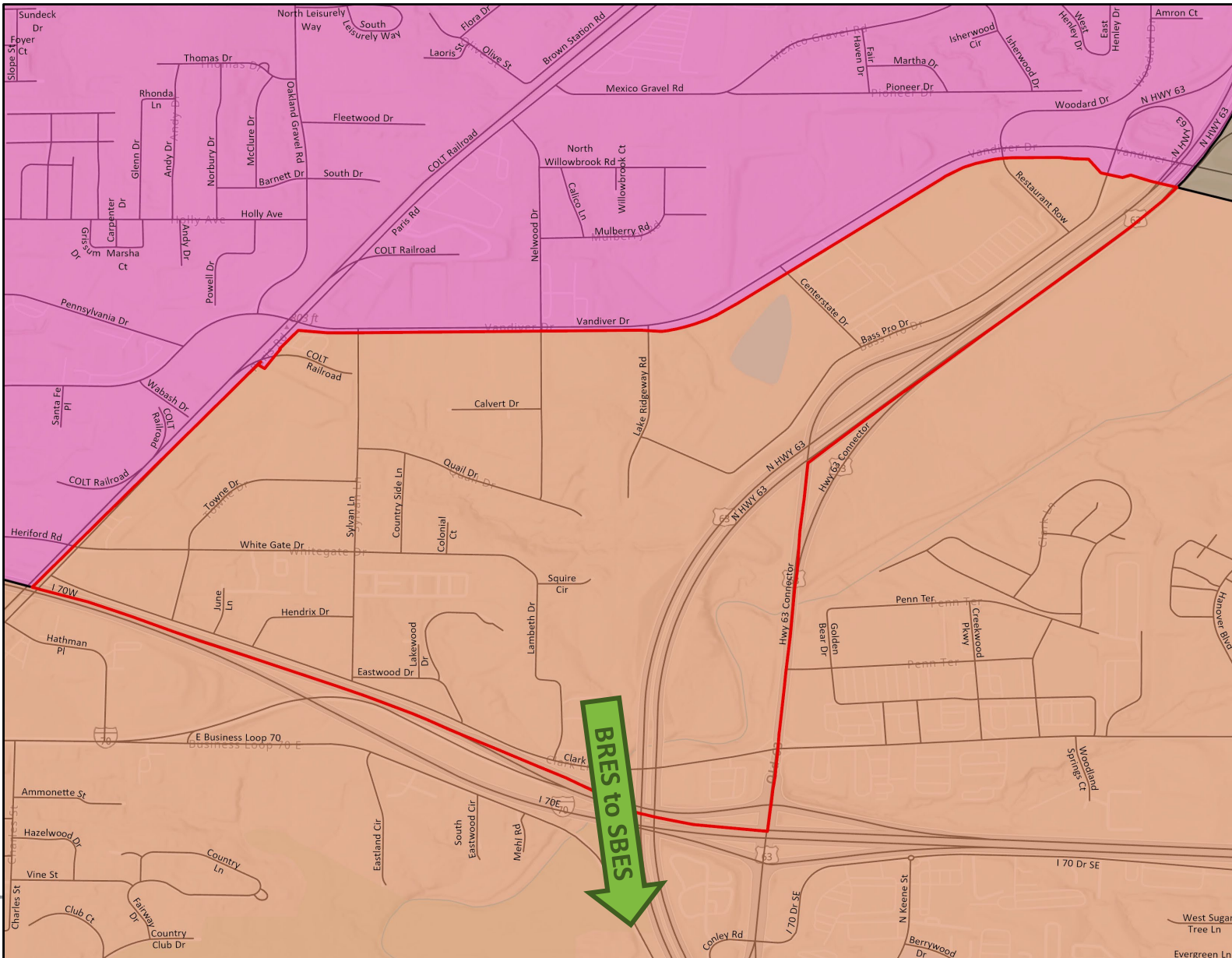
# Areas of Change

PHASE 2 (2025-26)

## Neighborhoods/Areas Moved:

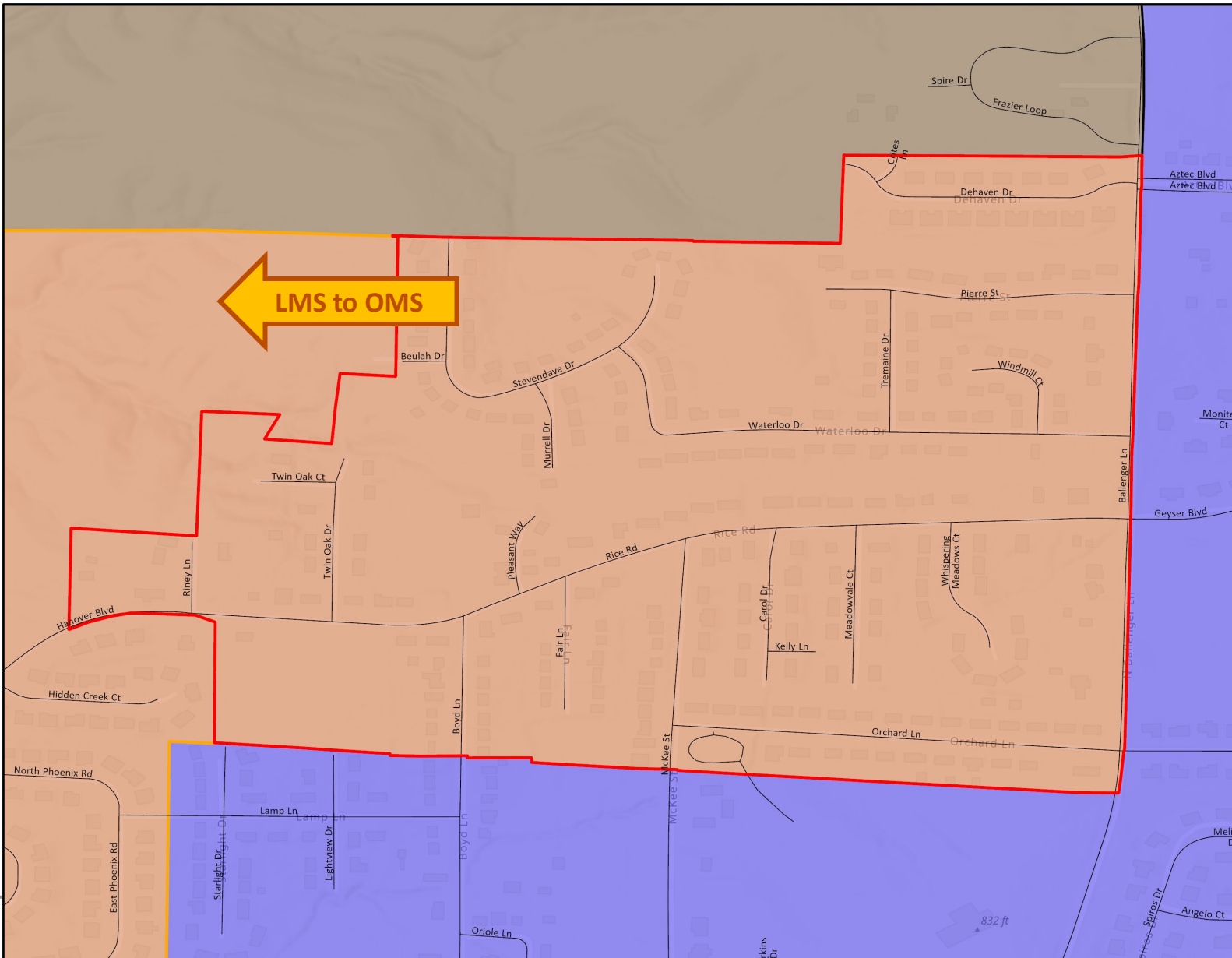
### Blue Ridge ES to Shepard Boulevard ES

- Baker
- Centerstate
- Eastwood Manor
- Eastwood Meadows
- Gateway
- Greentree Condominiums
- Hendrix
- Lambeth
- Loveall
- Oliver Calvert Survey
- Paris Road Village
- Todd
- White Gate
- White Gate Community
- White Gate South
- White Gate Village Condominiums



# Areas of Change

PHASE 2 (2025-26)



## Neighborhoods/Areas Moved:

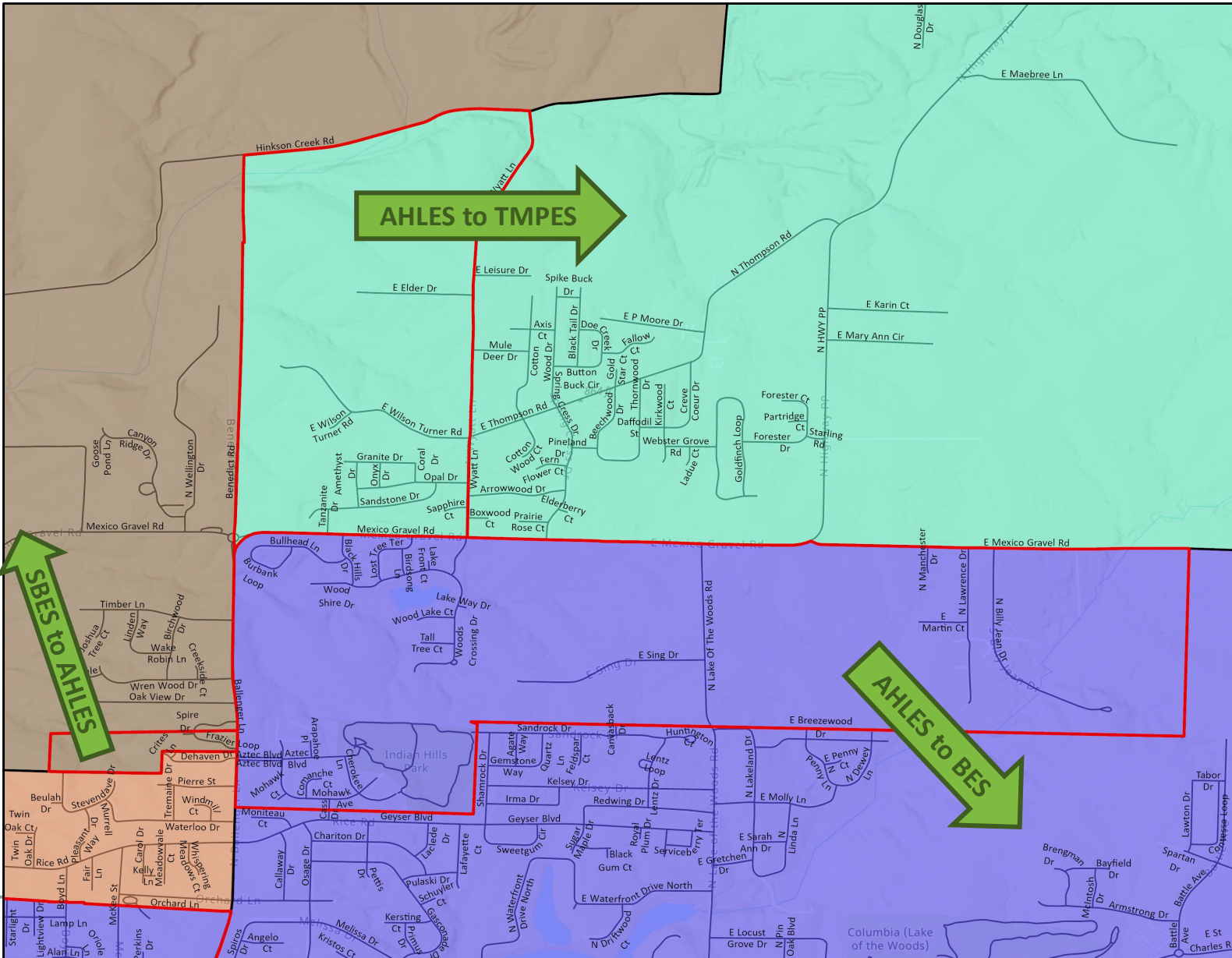
### Lange MS to Oakland MS

- Alumni Heights
- Casey
- Dannerville
- Emerald Ridge
- Meadow Vale
- Pleasant Gardens
- Rice Murrell Wilson
- RTW
- Twin Acres
- Wee Acres
- Whispering Meadows
- Windmill Corners
- Zaring Acres



# Areas of Change

PHASE 2 (2025-26)



## Neighborhoods/Areas Moved:

### Alpha Hart Lewis ES to Two Mile Prairie ES

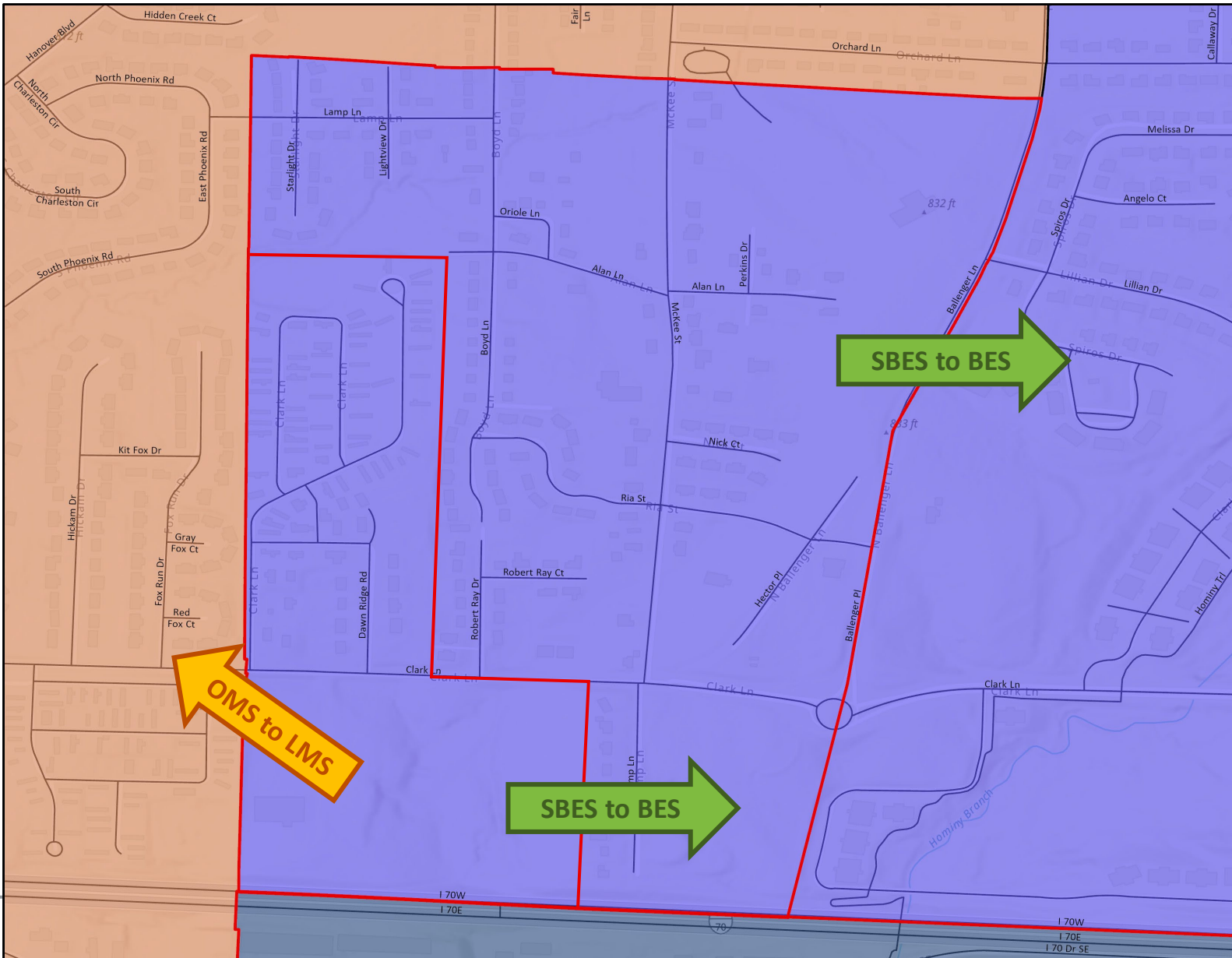
- Southern View Acres
- Wyatt Lane Acres

### Alpha Hart Lewis ES to Battle ES

- Aztec
  - Dakota Ridge
  - Haden Estates
  - Genau Farms
  - Indian Hills
  - Knowles
  - Lakeshire Estates
  - Manchester Heights
  - Martins Crossing
  - Maupin Acres
  - McCubbin Acres
  - Roseview
  - Wingate Estates
- ### Shepard Boulevard ES to Alpha Hart Lewis ES
- Cottages at Evergreen Place (currently split, no students impacted)

# Areas of Change

PHASE 2 (2025-26)



## Neighborhoods/Areas Moved:

### Shepard Boulevard ES to Battle ES

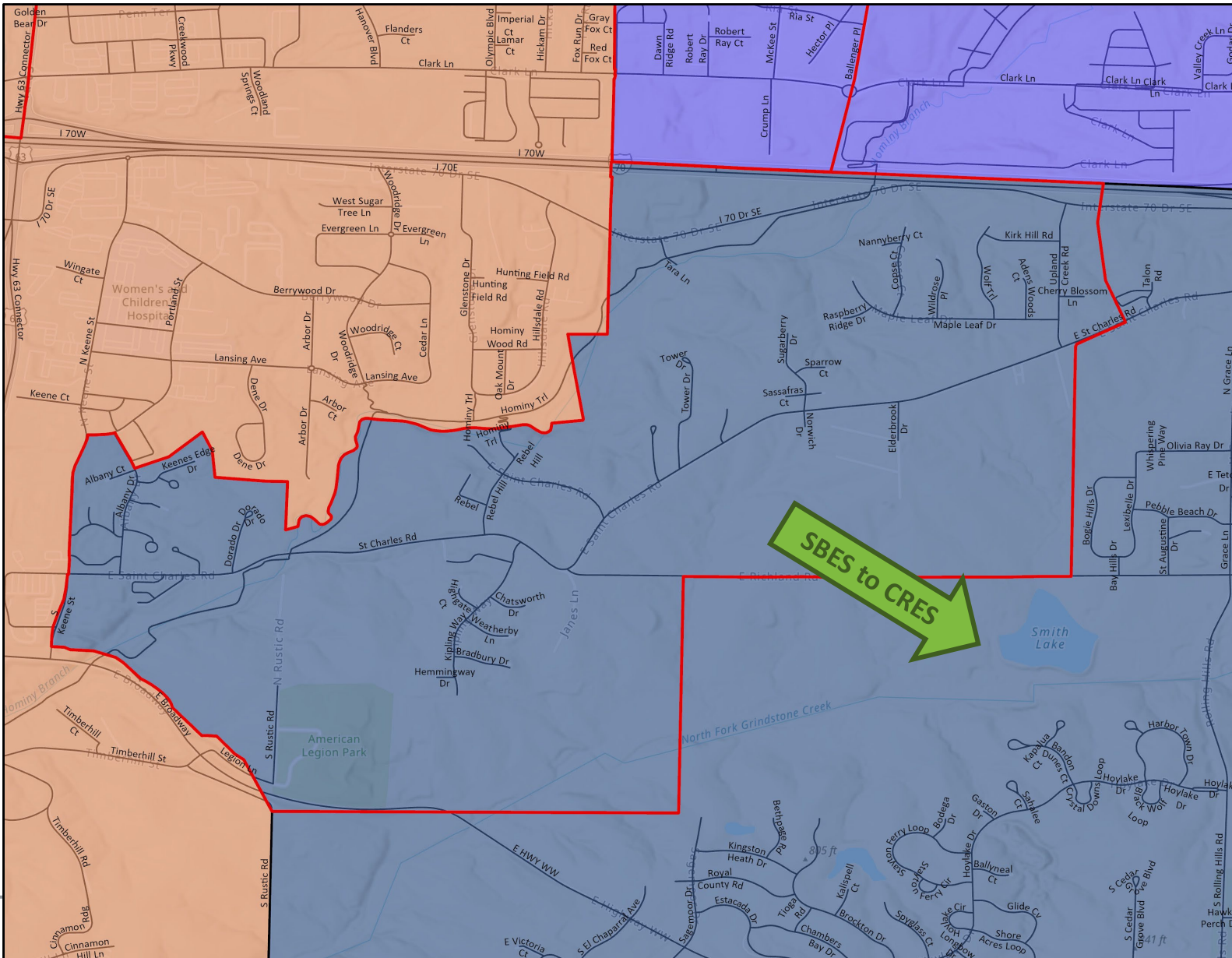
- Alan Place
- Charlemagne
- Hamilton Acres
- Lamplight Square
- Leora
- Mataora
- Maxwell Manor
- McKee Estates
- McKee Park
- Praise Assembly
- Pennell
- Renaissance Meadows
- Shaw
- Sidra East
- Walter Crump
- Zaring Acres
- Zaring Hills

### Oakland MS to Lange MS

- Maxwell Manor
- Praise Assembly

# Areas of Change

PHASE 2 (2025-26)



## Neighborhoods/Areas Moved:

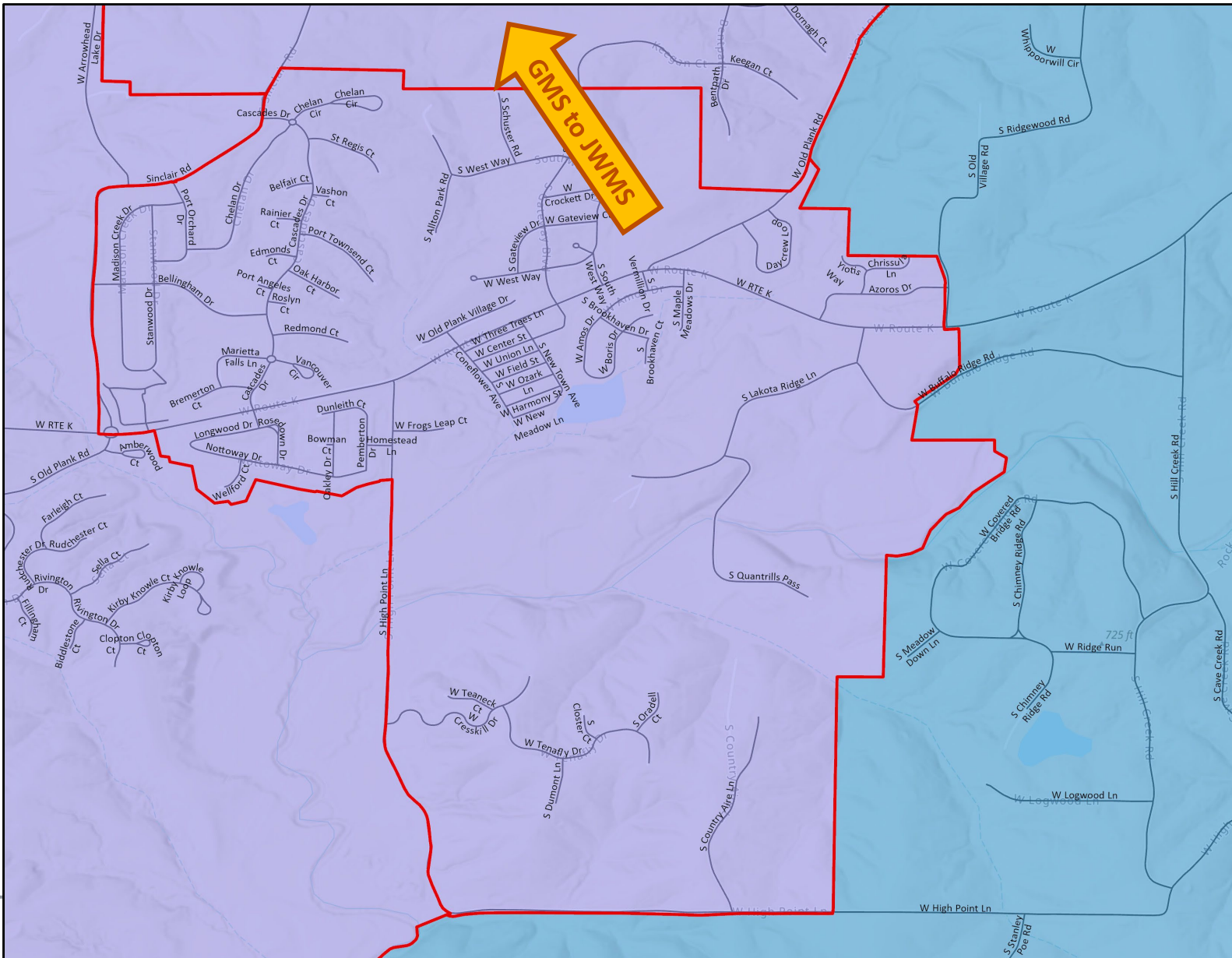
### Shepard Boulevard ES to Cedar Ridge ES

- American Legion
- Anson Acres
- Avalon
- Carmel Creek
- Cedaredge Condominiums
- Chateau on St. Charles
- DeCrouch Estates
- East Ridge Park
- Eastland Hills
- Eastland Hills Estates
- Gobblers Knob
- Harris Estates
- Havelka
- Hawks Ridge
- Keene's Edge
- Keene Estates
- Keeneland Downs Condominiums
- McGary Subdivision
- Sarrazin Estate
- Seifert
- St. Charles Landing
- St. Charles Place
- St. Charles Village
- The Terebinths
- Walden
- Wellington Manor
- Wilkinson
- Woodsong



# Areas of Change

PHASE 2 (2025-26)



## Neighborhoods/Areas Moved:

### Gentry MS to John Warner MS

- Cedarbrook
- Cedarbrook Two
- Eagle Nest Estates
- Farrar Subdivision
- Frog's Leap
- Gateway South
- Heatherhill Estates
- Lazar
- Leatherwood Hills
- Maple Meadows
- New Providence
- New Town
- Oak Park
- Old Plank Estates
- Old Plan Village
- Rose Subdivision
- Rose Subdivision
- Scenic Heights
- Sinclair Road
- Stone Well Estates
- The Cascades
- Victoria South
- Yanis Estates



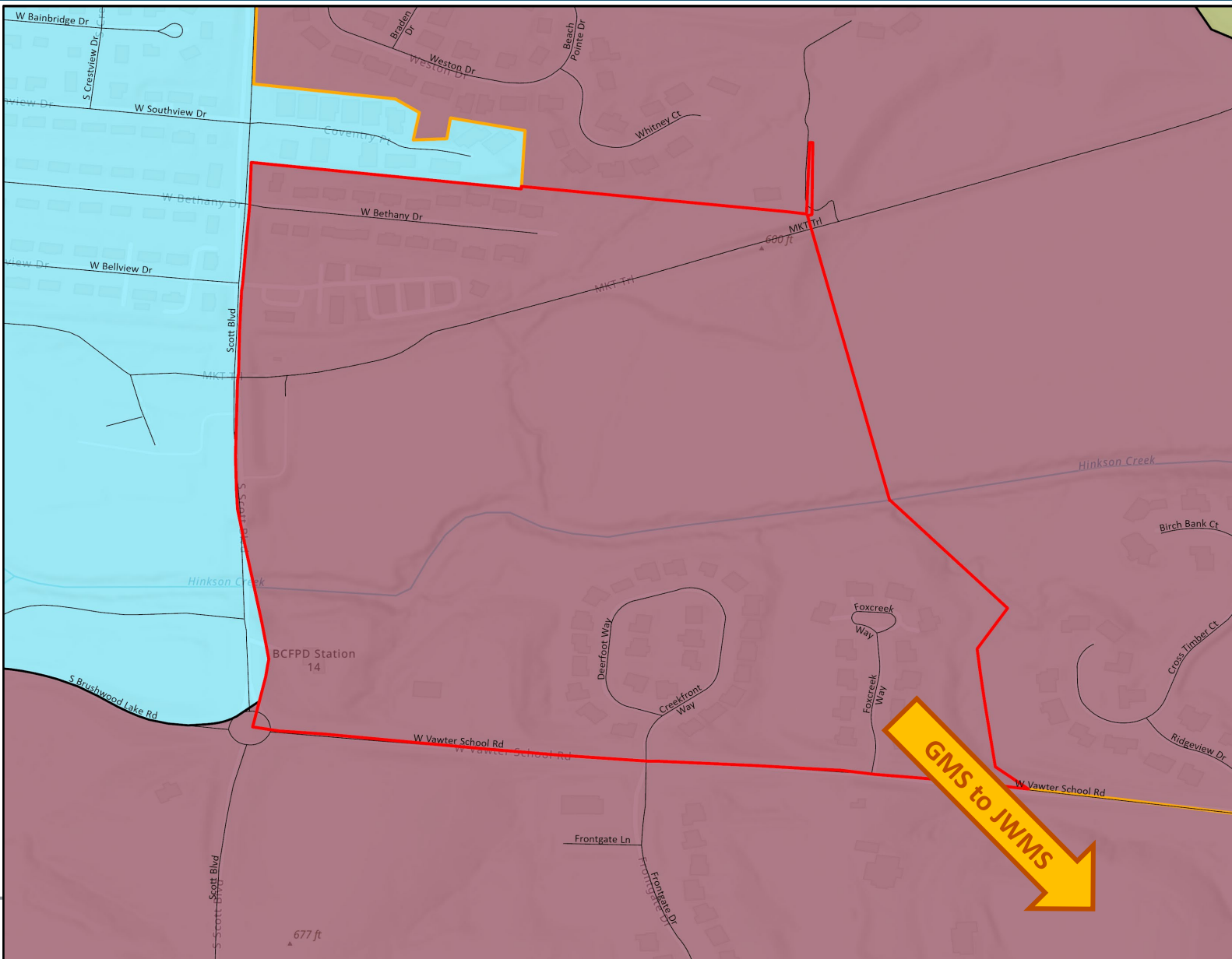
# Areas of Change

PHASE 2 (2025-26)

## Neighborhoods/Areas Moved:

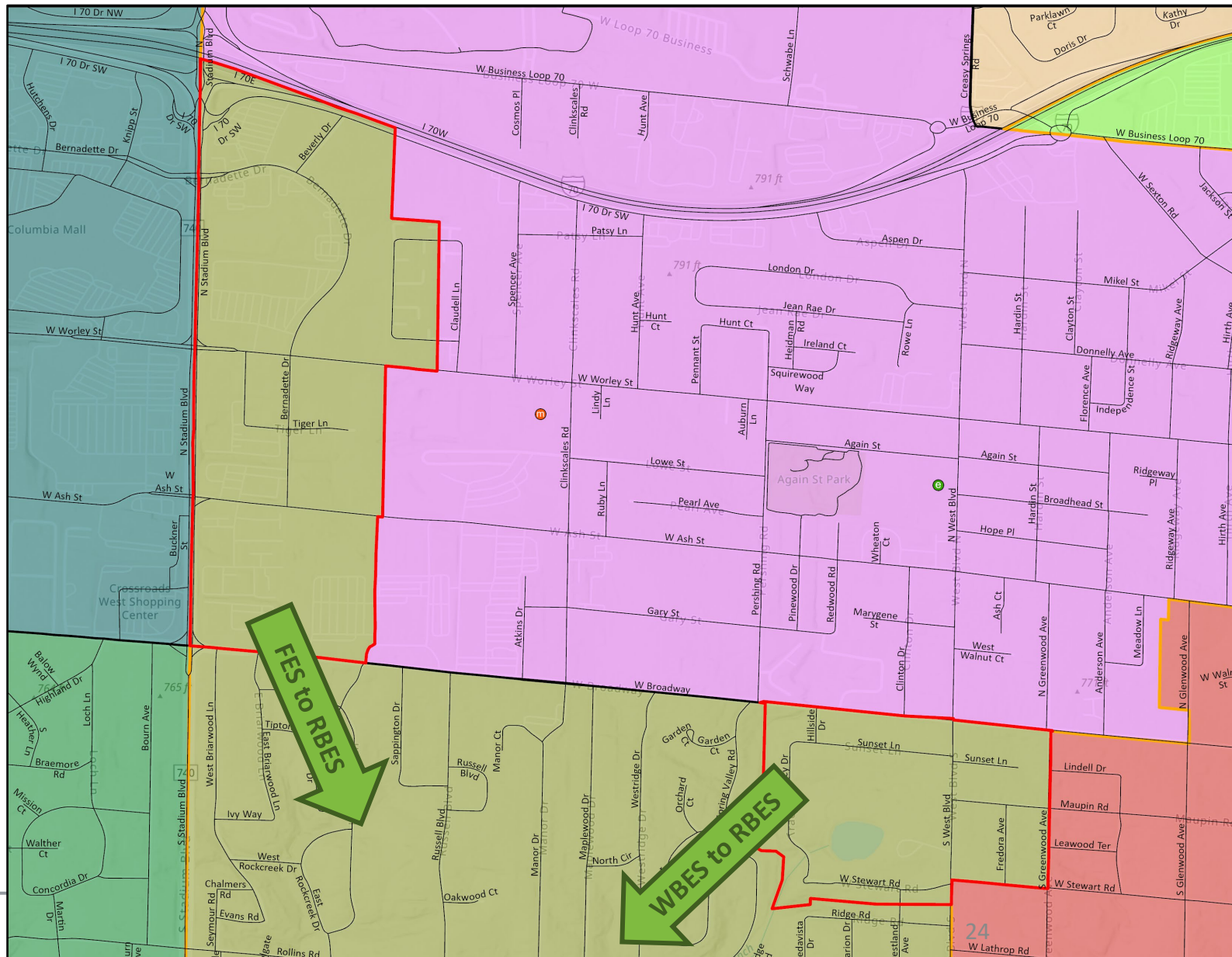
### Gentry MS to John Warner MS

- Ashby West
- Spring Creek



# Areas of Change

PHASE 2 (2025-26)



## Neighborhoods/Areas Moved:

### Fairview ES to Russell Boulevard ES

- Columbia Plaza North
- Lourdes
- Machens
- Reichman
- Ross Dickerson
- Tiger Village Condominiums
- Worley Street
- Shelter North
- Shelter Place
- Stadium Plaza



### West Boulevard ES to Russell Boulevard ES

- A.J. Estates
- Backus
- Charleston Court
- Groshong Place
- Henninger
- Medavista
- R.W. Moore
- Tracy Hills
- Westwood



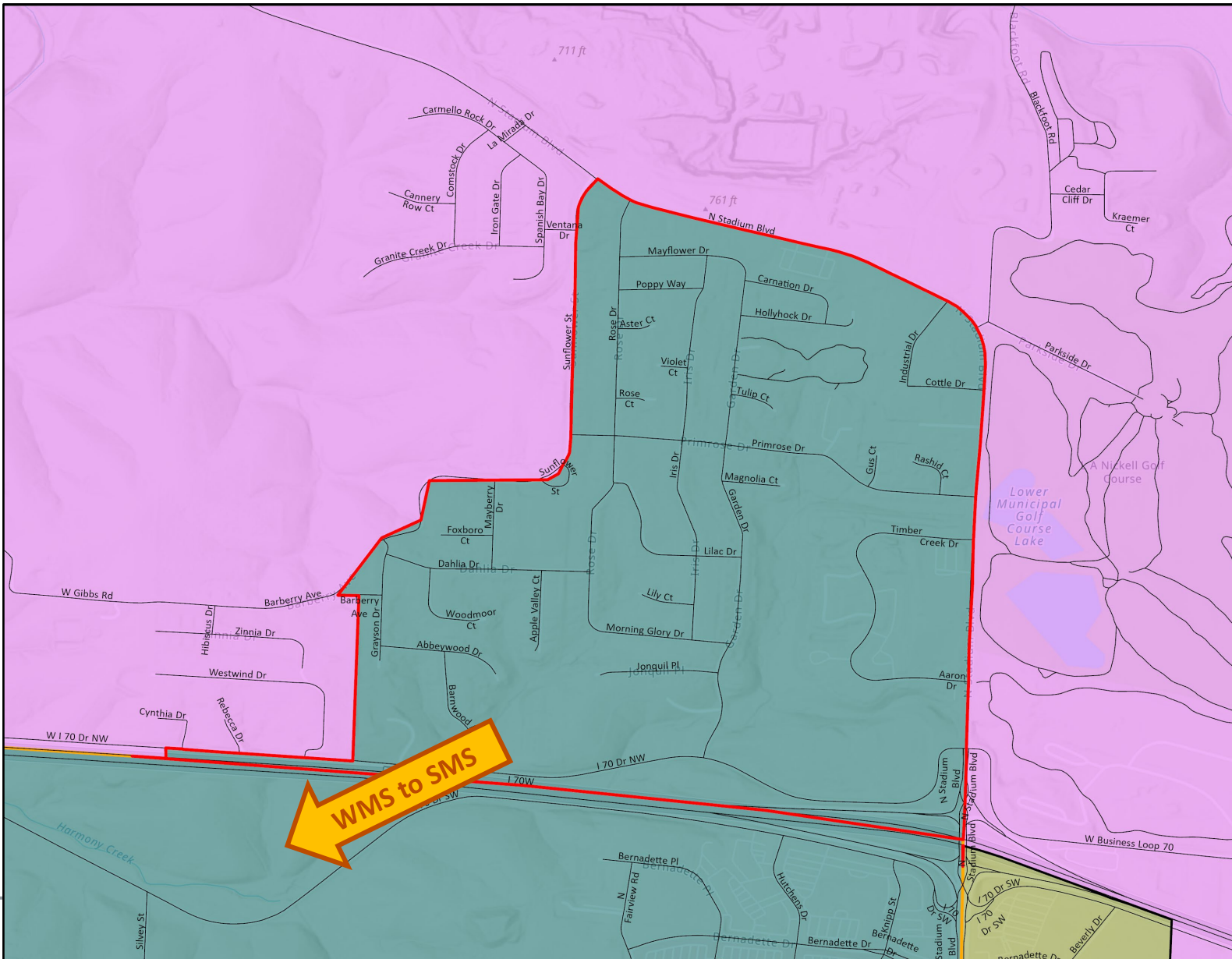
# Areas of Change

PHASE 2 (2025-26)

## Neighborhoods/Areas Moved:

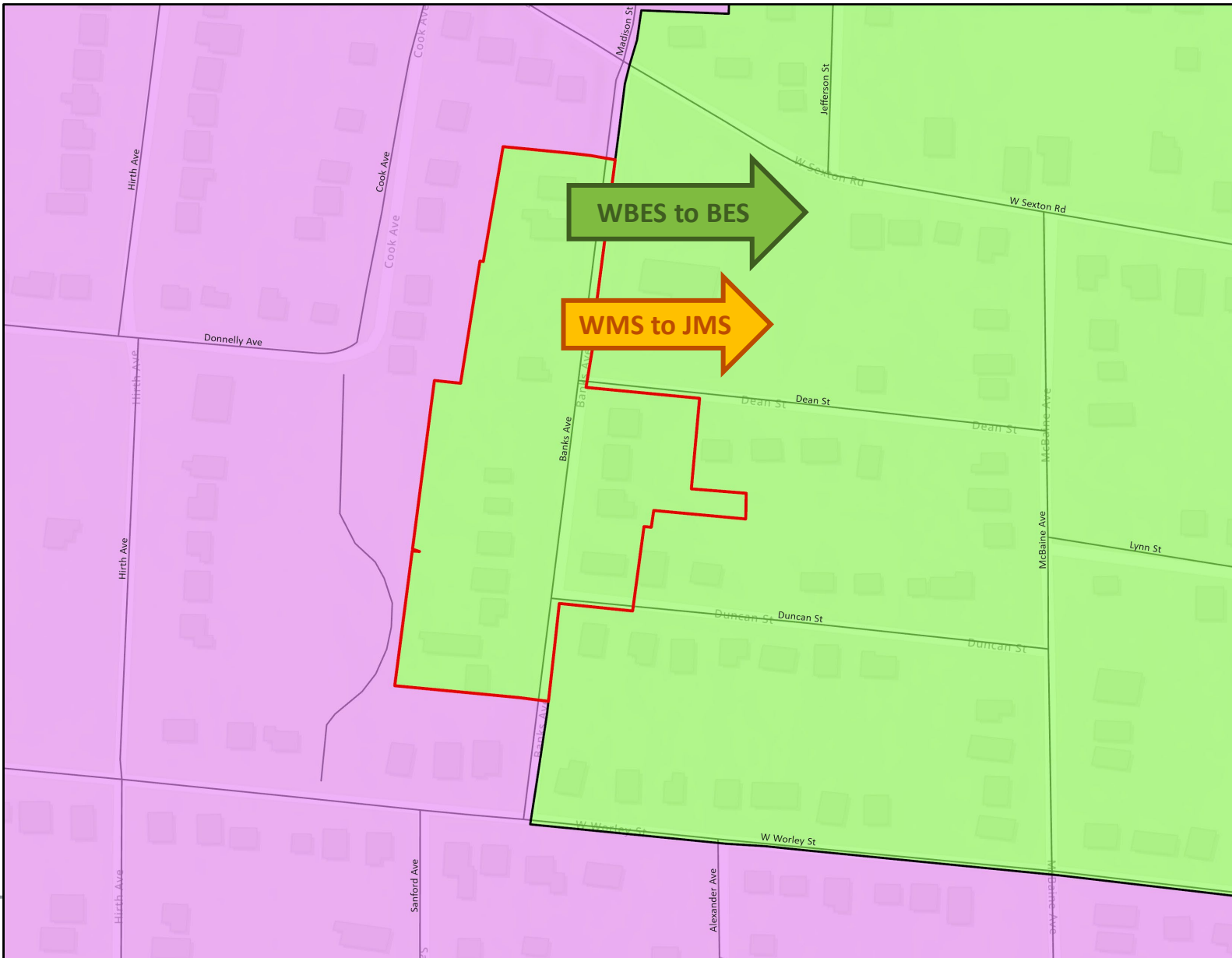
### West MS to Smithton MS

- Dimitrios Acres
- Primrose Townhomes
- Rock Haven
- Rosecliff Gardens
- Rosecliff
- Scheulen Acres
- Sidra
- Timber Creek
- Valley View Gardens
- Valley View North
- Valley View South
- Valley View West
- Valley View Place



# Areas of Change

PHASE 2 (2025-26)



## Neighborhoods/Areas Moved:

West Boulevard ES to Benton ES

West MS to Jefferson MS

- Banks
- Poindexter



A group of five diverse school children are running happily across a grassy field. From left to right: a boy in a grey shirt and blue jeans, a boy in a white polo shirt and blue jeans with a backpack, a girl in a pink shirt and blue shorts, a boy in a blue shirt and blue jeans with a backpack, and a girl in a pink long-sleeved shirt and blue jeans. They are all smiling and appear to be in motion. In the background, there is a school building with large windows and some trees. The overall scene is bright and cheerful.

# PHASE 3 CHANGES (2026-27)

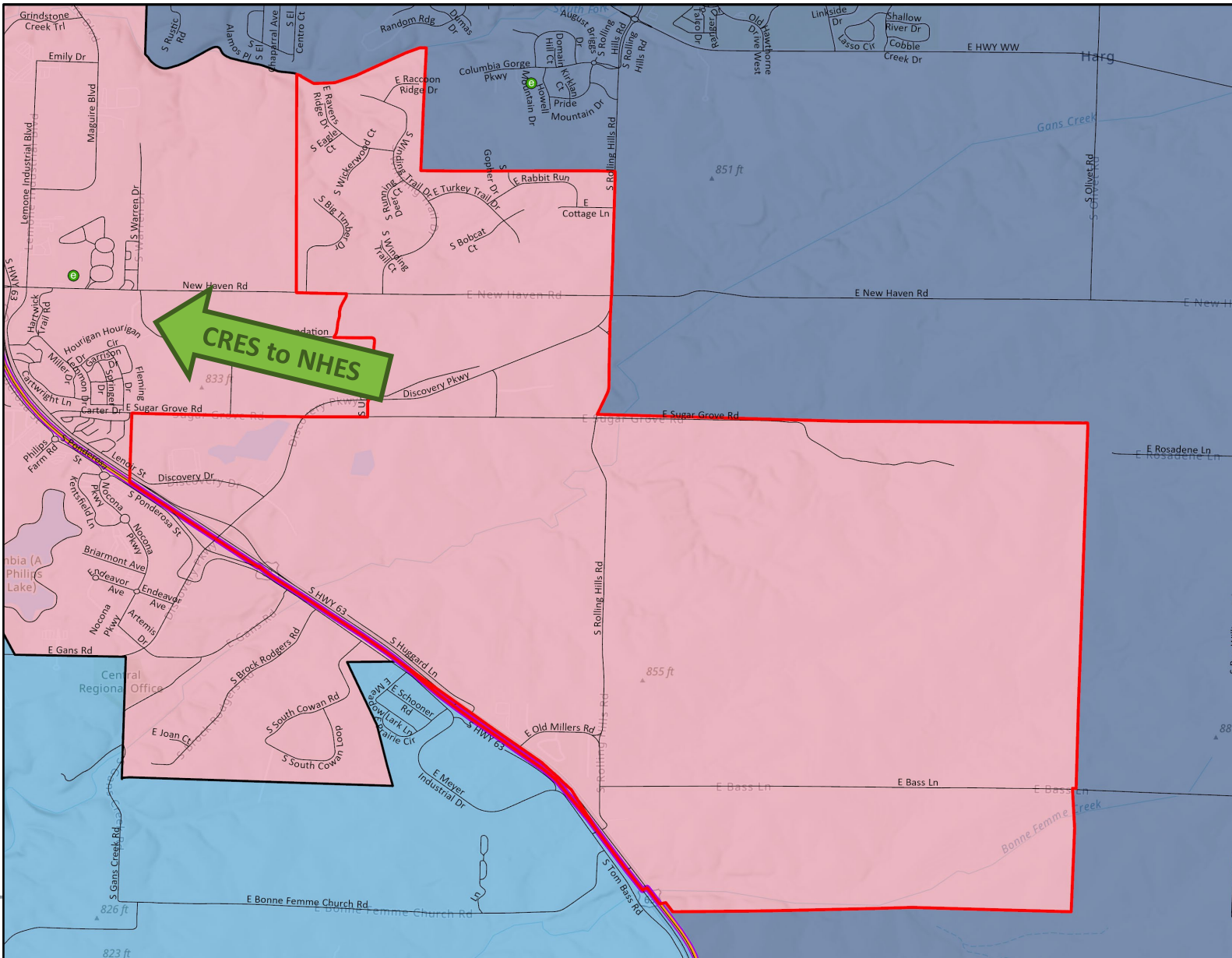
# Areas of Change

PHASE 3 (2026-27)

## Neighborhoods/Areas Moved:

### Cedar Ridge ES to New Haven ES

- Big Timber
- The Woodlands
- Vedic Gardens





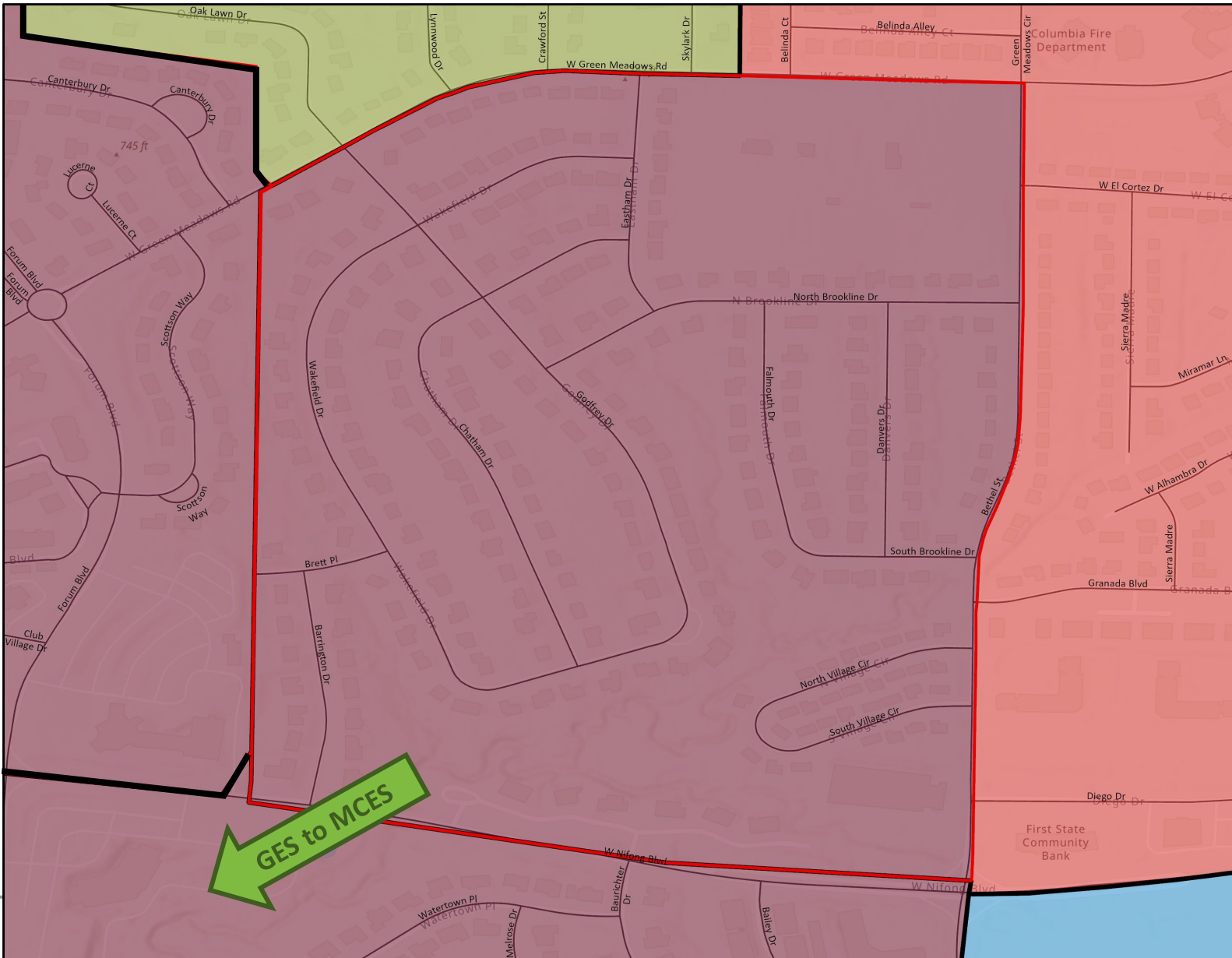
# Areas of Change

PHASE 3 (2026-27)

## Neighborhoods/Areas Moved:

### Grant ES to Mill Creek ES

- Country Club Meadows
- Shalom Subdivision
- Stonebridge Park
- Stonebridge Park Condominiums
- Westchester
- Westchester Village
- Woodrail Meadows



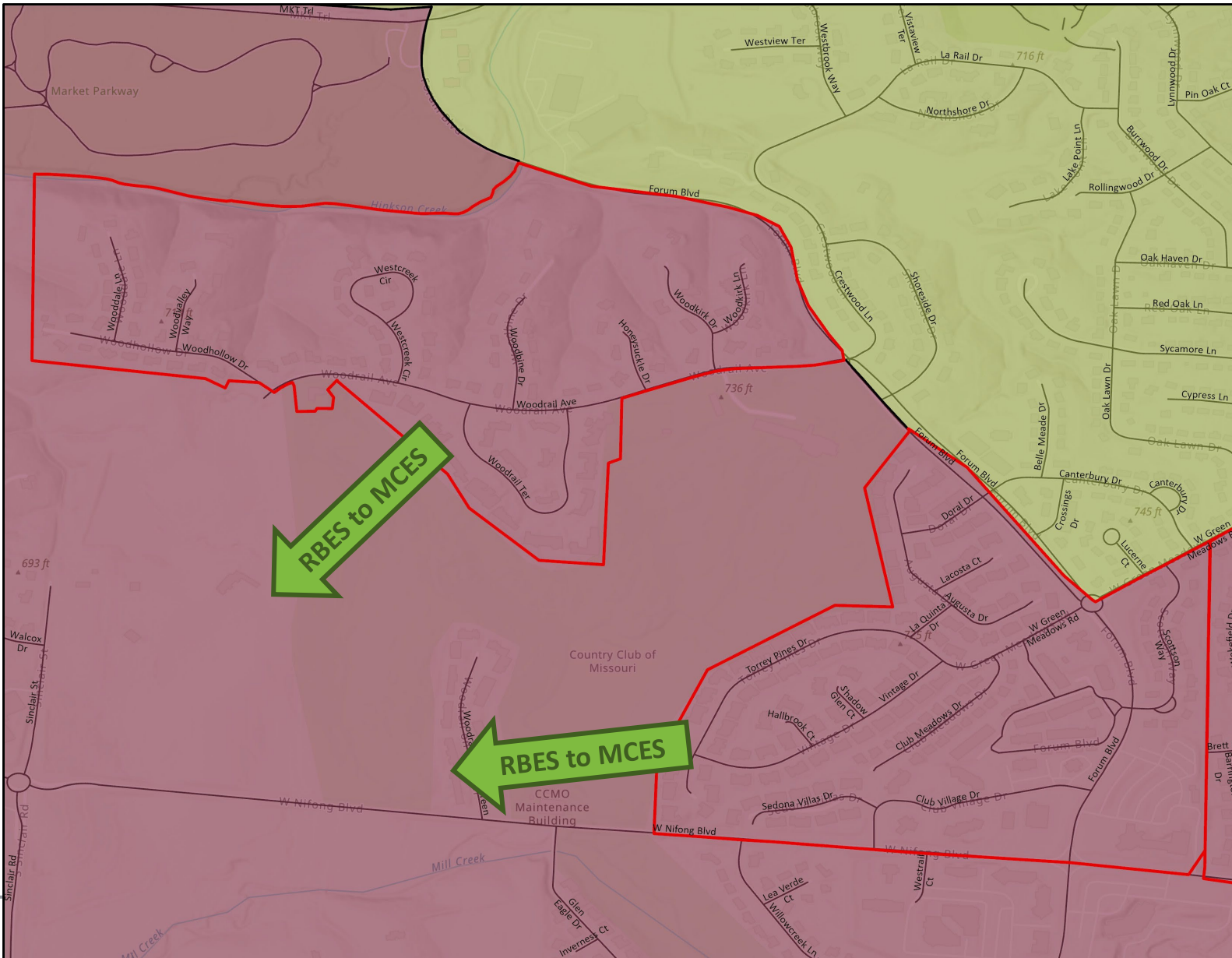
# Areas of Change

PHASE 3 (2026-27)

## Neighborhoods/Areas Moved:

### Russell Boulevard ES to Mill Creek ES

- Country Club Villas
- Country Club Village
- Sedona Villas
- Village Square
- Woodrail





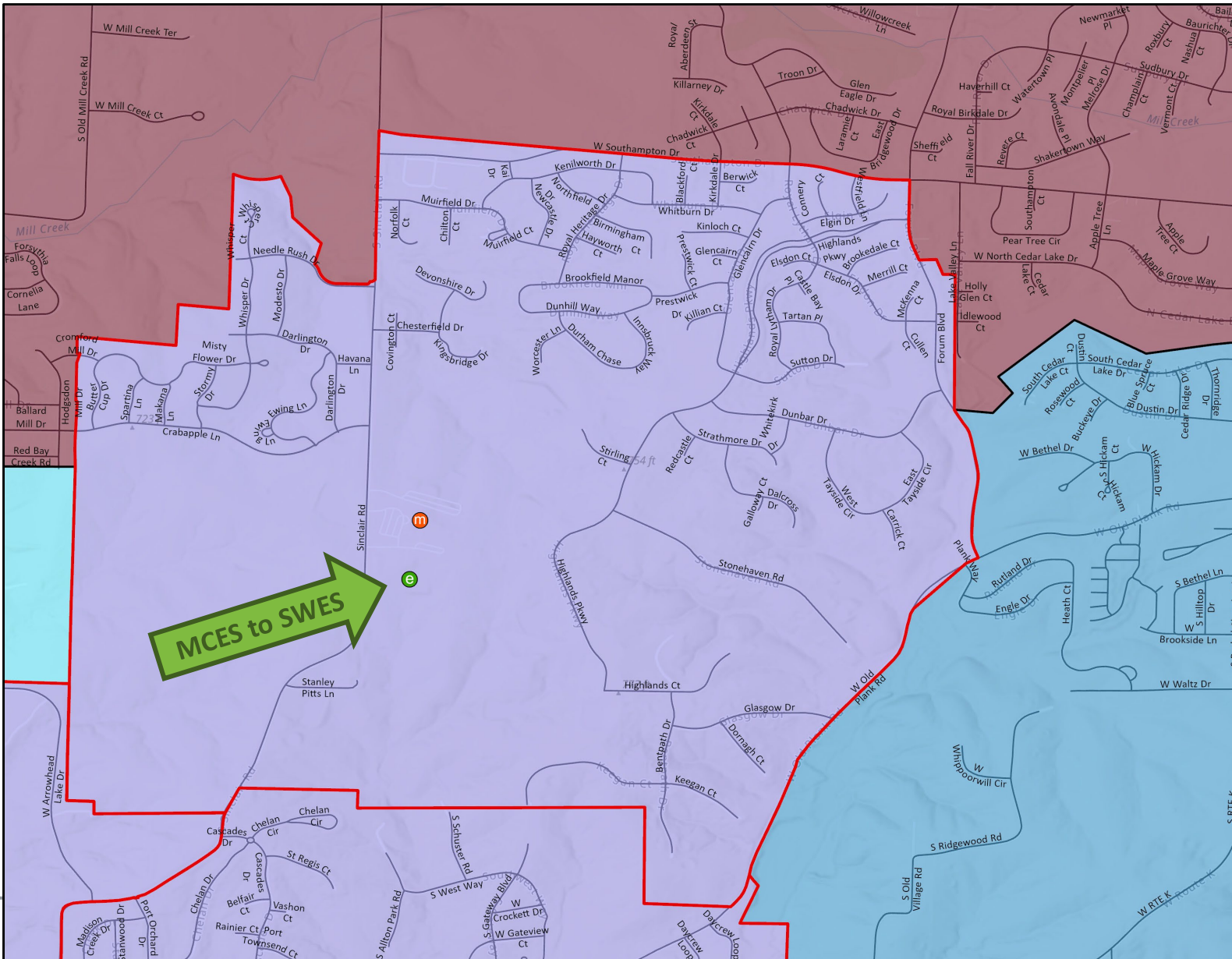
# Areas of Change

PHASE 3 (2026-27)

## Neighborhoods/Areas Moved:

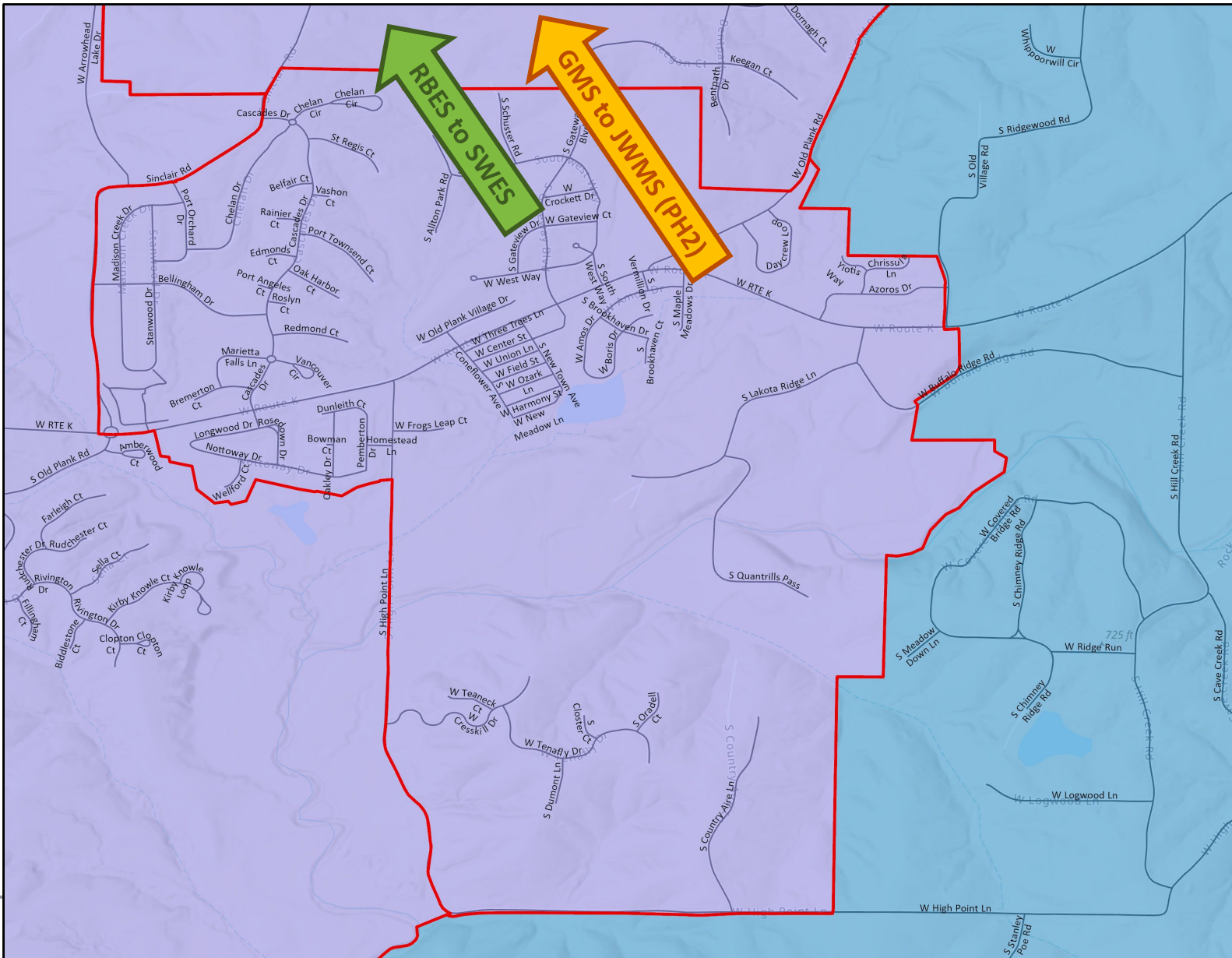
### Mill Creek ES to New Southwest ES

- Arrowhead Lake Estates
- Cunningham Quality Estates
- Heritage Estates
- Heritage Meadows
- Heritage Village
- Heritage Woods
- The Highlands
- Highland Ridge
- Highland Circle
- Legacy Farms
- Red Bird Run
- Rory Point
- Sinclair Estates



# Areas of Change

PHASE 3 (2026-27)



## Neighborhoods/Areas Moved:

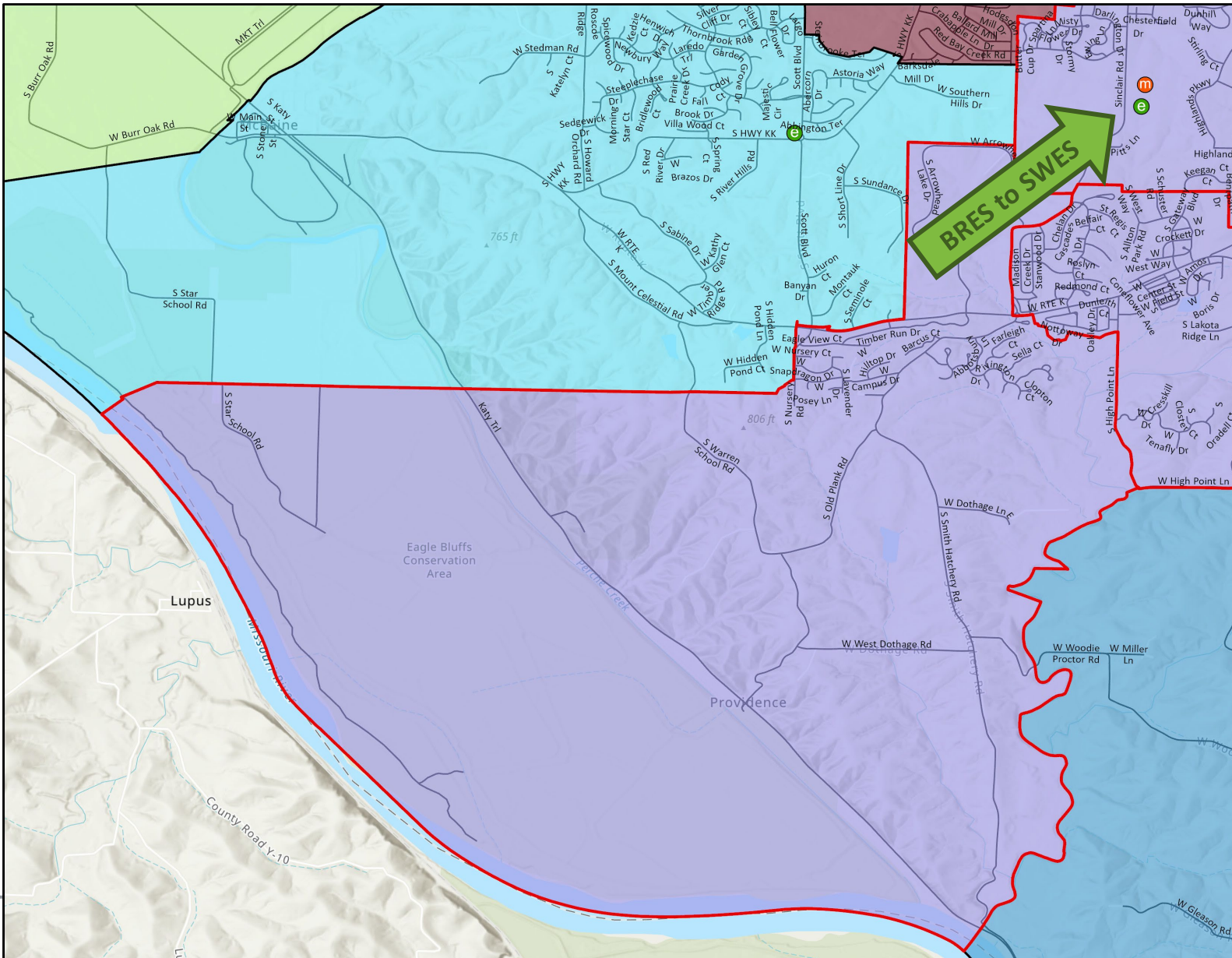
Rock Bridge ES to New Southwest ES

Gentry MS to John Warner MS (in PH2)

- Cedarbrook
- Cedarbrook Two
- Eagle Nest Estates
- Farrar Subdivision
- Frog's Leap
- Gateway South
- Heatherhill Estates
- Lazar
- Leatherwood Hills
- Maple Meadows
- New Providence
- New Town
- Oak Park
- Old Plank Estates
- Old Plan Village
- Rose Subdivision
- Rose Subdivision
- Scenic Heights
- Sinclair Road
- Stone Well Estates
- The Cascades
- Victoria South
- Yanis Estates

# Areas of Change

PHASE 3 (2026-27)

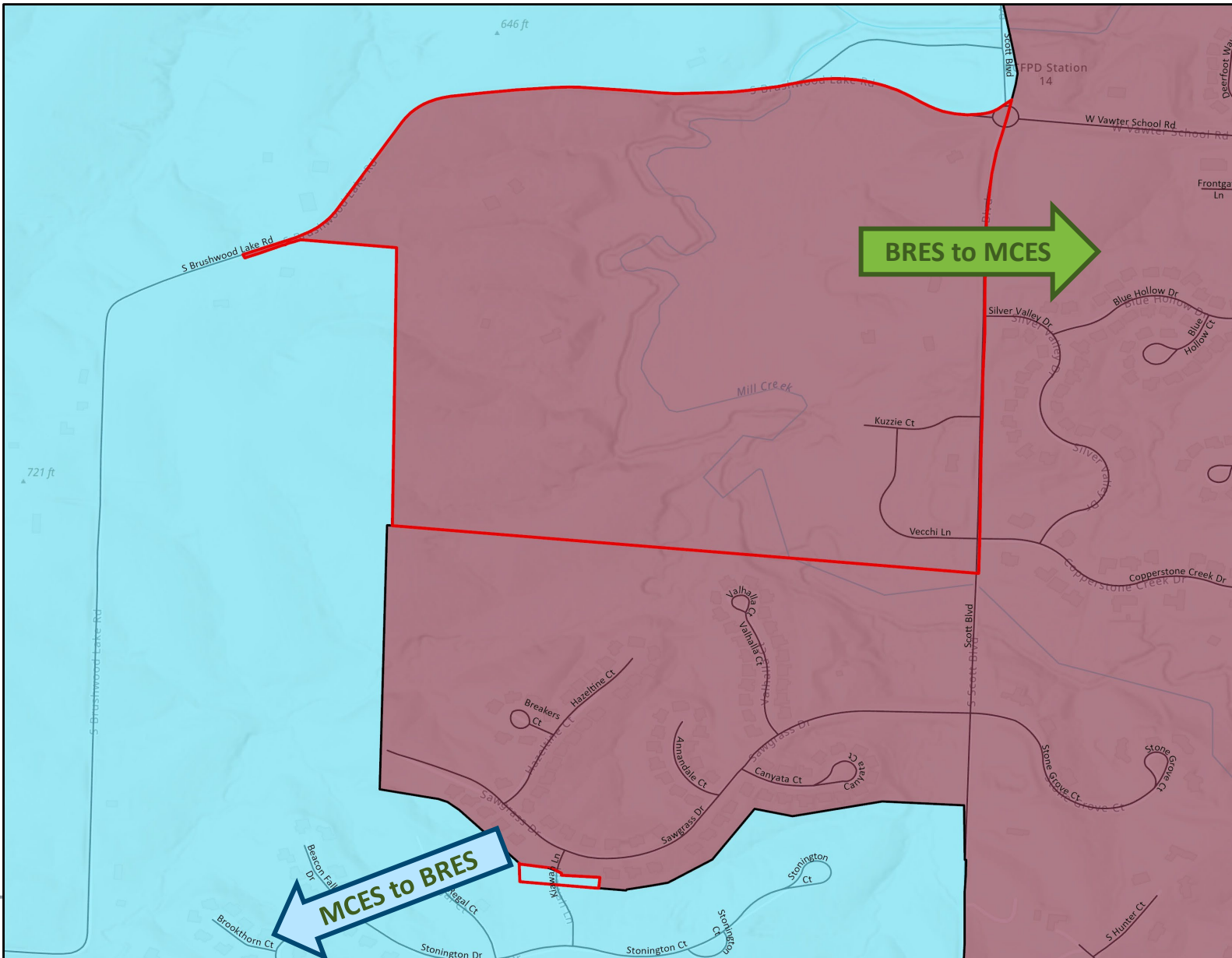


## Neighborhoods/Areas Moved: Beulah Ralph ES to New Southwest ES

- Arrowhead Lake Estates
- Barcus Ridge
- Boone's Pointe
- Cobblestone Cottages
- Cobblestone Cottages Common
- Deerfield Ridge
- Di Dan Subdivision
- Grassland Hills
- Nursery Heights
- Providence and Parkers
- The Elms at Martin Ridge
- The Gates Park
- The Gates
- Toalson Estates
- University Estates
- Wayland (Planned Residential)

# Areas of Change

PHASE 3 (2026-27)



## Neighborhoods/Areas Moved:

### Beulah Ralph ES to Mill Creek ES

- Kurzejeski Subdivision
- Timberbrook

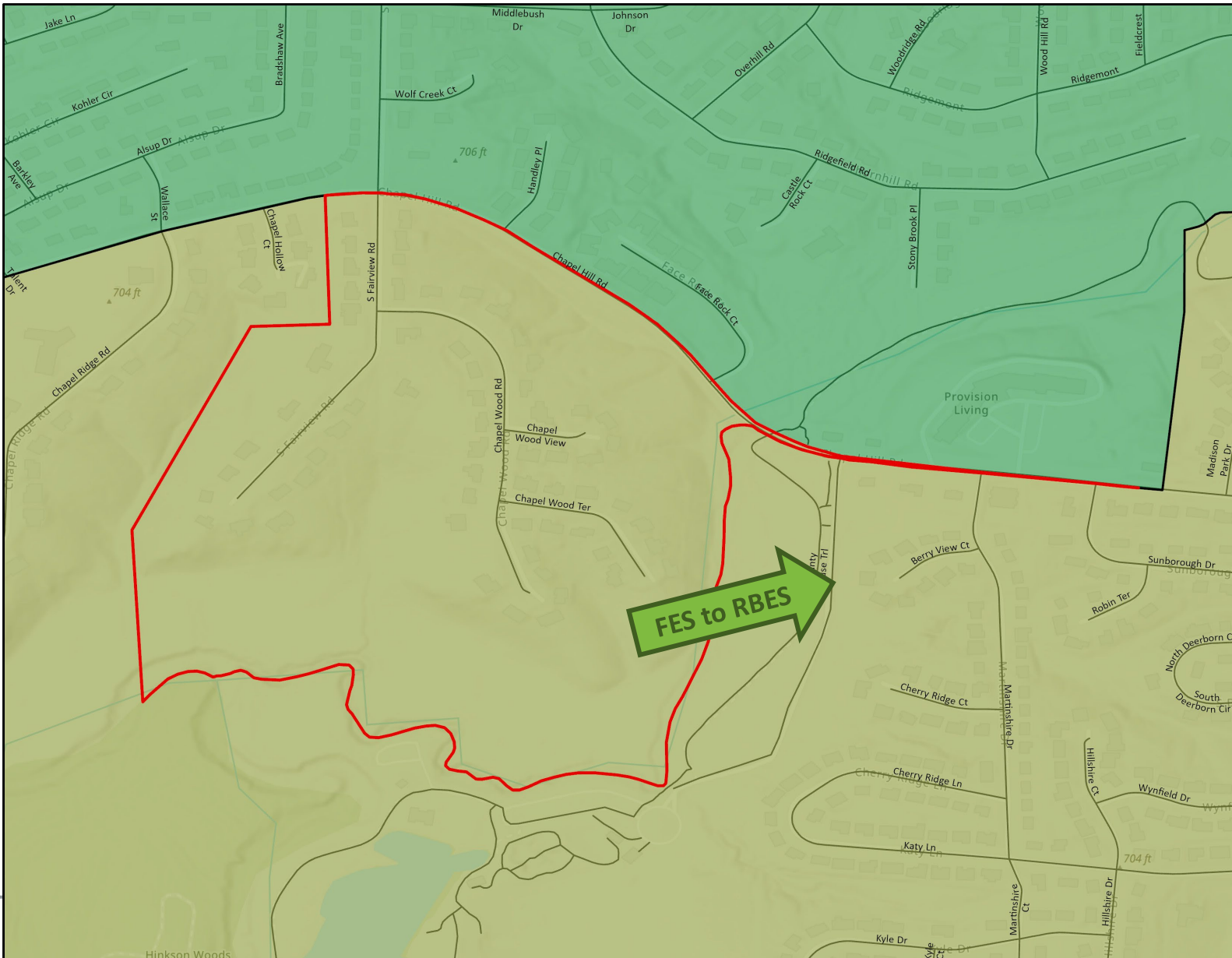
No students impacted

### Mill Creek ES to Beulah Ralph ES

- Creeks Edge (2 parcels on Kiawah Lane; neighborhood continuity)

# Areas of Change

PHASE 3 (2026-27)



## Neighborhoods/Areas Moved:

### Fairview ES to Russell Boulevard ES

- Atkins Estates
- Chapel Hill Estates

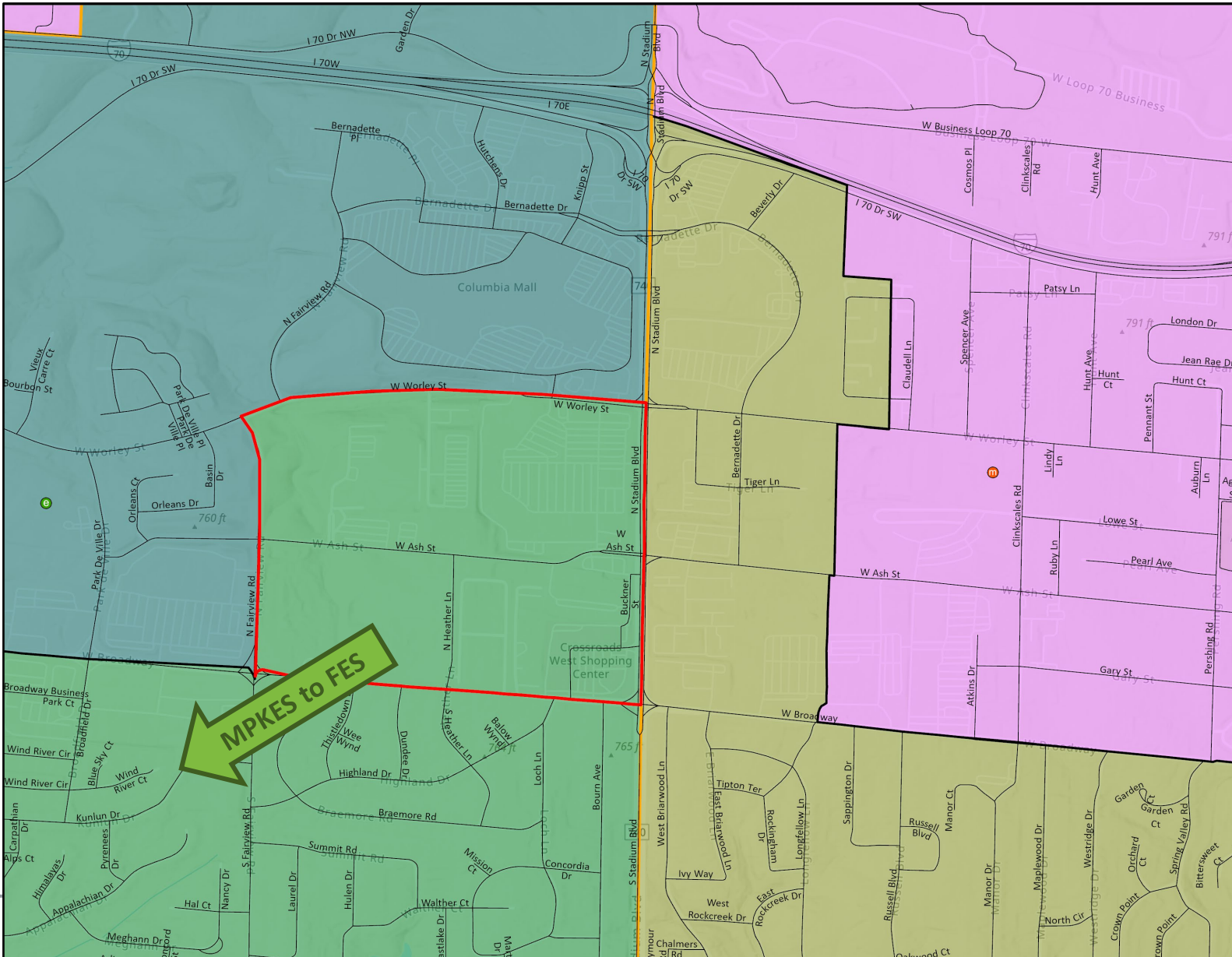
# Areas of Change

PHASE 3 (2026-27)

## Nearby Neighborhoods/Areas Moved:

### Mary Paxton Keeley ES to Fairview ES

- Biscayne Heights
- Crossroads West
- Holiday House Apartments
- Off Broadway
- Off Broadway Condominiums
- Worley Street



**Thank You!**