



Community Solar

General Information

- Community Solar designed similar to distributed solar
 - Net Billing
- Combination of solar from the Truman and Bernadette Fields
- Total combined ~1 MW of solar allocated to program
 - Divided into 1.5 kW blocks (actually 999 kW)
 - 100 blocks reserved for income eligible customers (15%)
- Self contained program

General Information (cont.)

- Residential electric customers only
 - Available for owner occupied and rental properties
 - Former Solar One customers get first priority
- Customers can sign up for 1 block of solar
- Program is designed based on current electric rates with an assumed 1% annual increase
- Participation will start January 1, 2024
 - LMI participation will start Spring 2024
- Program designed to run through December 2044
 - Annual automatically renewing agreement

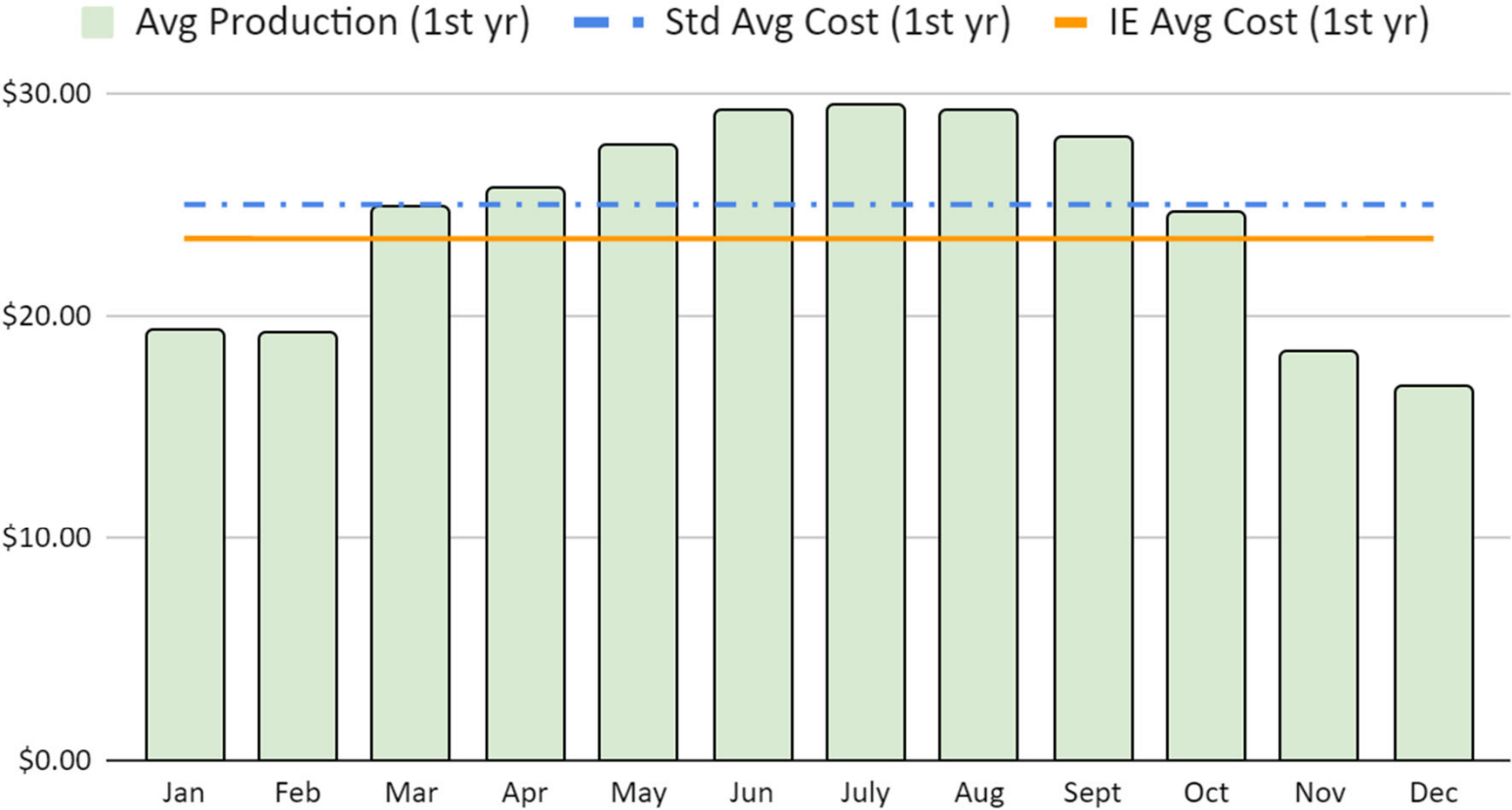
Customer Costs

- Monthly customer costs will be a combination of two fees for a total of \$25
 - Solar Subscription Fee: \$14.23
 - Utility Operations Fee: \$10.77
- Solar Subscription Fee is a fixed rate over the life of the program
- Utility Operations Fee is a variable cost that may adjust with program costs
- One time fee of \$27 for application processing

Income Eligible Community Solar Program

- 100 participants will receive 1 block of solar for one year
- No application fee
- Monthly customer costs will be a combination of two fees for a total of \$23.46
 - Solar Subscription: \$12.69 (fixed)
 - Utility Operations: \$10.77 (variable)
- Income eligible participants will pay less on the solar subscription, the cost of which will be carried by the standard participants

Monthly Cost and Benefit



First Year Benefits and Costs

- Benefits and costs are estimated based on a combination of actual production and modeling
 - Estimated costs for a standard customer is \$0.63 per month
 - Estimated benefit for an income eligible customer is ~\$27 through the first 7 months of participation, with an anticipated average benefit of \$0.91 per month in year one
- Customer value will vary based on actual production during billing period