



MISSOURI

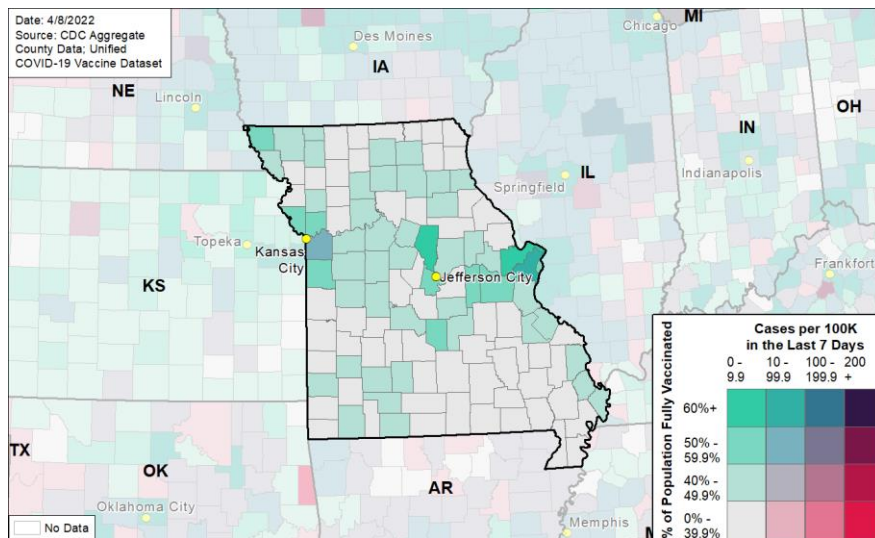
STATE SYNOPSIS

	LAST WEEK	CHANGE FROM PREVIOUS WEEK
RATE OF NEW COVID-19 CASES PER 100,000	0	-100%
NUCLEIC ACID AMPLIFICATION TEST (NAAT) POSITIVITY RATE	3.3%	+0.5%
NEW CONFIRMED COVID-19 HOSPITAL ADMISSIONS PER 100,000	3.1	-22%
RATE OF NEW COVID-19 DEATHS PER 100,000	0.0	-100%
PEOPLE RECEIVED AT LEAST 1 DOSE	4,044,304 people	65.9% of total pop.
PEOPLE 5-11 RECEIVED AT LEAST 1 DOSE	134,103 people	25.1% of 5-11 pop.
PEOPLE 12+ RECEIVED AT LEAST 1 DOSE	3,909,773 people	74.7% of 12+ pop.
PEOPLE FULLY VACCINATED	3,419,202 people	55.7% of total pop.
PEOPLE 12+ FULLY VACCINATED	3,315,520 people	63.3% of 12+ pop.
PEOPLE 65+ RECEIVED BOOSTER	582,474 people	65.6% of fully vaccinated 65+ pop.

SARS-CoV-2 Variants of Concern

- In the 4 weeks ending 3/12/2022, the following proportions of variants of concern were identified in [Missouri](#): Delta (B.1.617.2, AY.*) 0.3%, Omicron (B.1.1.529, BA.1*, BA.3) 90.1%, (BA.2) 9.7%

COVID-19 Reported Cases per 100,000 Population (last 7 days) and Percent of Total Population Fully Vaccinated



Starting 11/1/21, several states shifted to the use of report date; this change may result in fluctuations of weekly values and/or week-on-week changes.

The purpose of this report is to develop a shared understanding of the current status of the pandemic at the national, regional, state, and local levels. We recognize that data at the state level may differ from that available at the federal level. Our objective is to use consistent data sources and methods that allow for comparisons to be made across localities. We appreciate your continued support in identifying data discrepancies and improving data completeness and sharing across systems. We look forward to your feedback. All inquiries and requests for information should be directed to <https://wwwn.cdc.gov/des/ContactUs/Form>.





MISSOURI

STATE PROFILE REPORT | 04.08.2022

	STATE	STATE, % CHANGE FROM PREVIOUS WEEK	FEMA/HHS REGION	UNITED STATES
NEW COVID-19 CASES (RATE PER 100,000)	1 (0)	-100%	1,526 (11)	185,639 (56)
NUCLEIC ACID AMPLIFICATION TEST (NAAT) POSITIVITY RATE	3.3%	+0.5%*	3.3%	3.0%
TOTAL NAAT VOLUME (TESTS PER 100,000)	63,694† (1,038†)	-5%†	89,385† (632†)	5,294,993† (1,595†)
NEW COVID-19 DEATHS (RATE PER 100,000)	0 (0.0)	-100%	125 (0.9)	3,297 (1.0)
CONFIRMED NEW COVID-19 HOSPITAL ADMISSIONS (RATE PER 100,000)	188 (3.1)	-22%	433 (3.1)	9,829 (3.0)
COVID-19 INPATIENT OCCUPANCY	2%	-1%*	2%	2%
NUMBER OF HOSPITALS WITH SUPPLY SHORTAGES (PERCENT)	7 (6%)	-12%	11 (2%)	191 (4%)
PEOPLE 5-11 INITIATING VACCINATION (PERCENT OF POPULATION)	996 (0.2%)	+56.9%	1,869 (0.1%)	72,140 (0.3%)
PEOPLE 12+ INITIATING VACCINATION (PERCENT OF POPULATION)	5,102 (0.1%)	+19.1%	10,942 (0.1%)	403,757 (0.1%)
PEOPLE 12-17 INITIATING VACCINATION (PERCENT OF POPULATION)	427 (0.1%)	-6.8%	1,027 (0.1%)	38,290 (0.2%)
PEOPLE 18+ INITIATING VACCINATION (PERCENT OF POPULATION)	4,675 (0.1%)	+22.3%	9,915 (0.1%)	365,467 (0.1%)
PEOPLE 65+ RECEIVING BOOSTER DOSE	3,449	+46.9%	7,185	256,098

* Indicates absolute change in percentage points.

† Due to delayed reporting, this figure may underestimate total diagnostic tests and week-on-week changes in diagnostic tests.

DATA SOURCES

Note: Some dates may have incomplete data due to delays in reporting. Data may be backfilled over time, resulting in week-to-week changes.

Cases and Deaths: State values are aggregated data provided by the states to the CDC. Historical reports of cases and deaths exceeding 1% of the total new cases or deaths reported in the US that day have been excluded. Data are through 4/7/2022; previous week is from 3/25 to 3/31.

Testing: CELR (COVID-19 Electronic Lab Reporting) state health department-reported data. The term Nucleic Acid Amplification Test (NAAT) includes RT-PCR and other testing methods. Test positivity through 4/5/2022; previous week is from 3/23 to 3/29. Test volume through 4/1/2022; previous week is from 3/19 to 3/25.

Admissions: Unified Hospitals Dataset in HHS Protect. Data are through 4/6, previous week is from 3/24 to 3/30.

Shortages: Unified Hospitals Dataset in HHS Protect. Values presented show the latest reports from hospitals in the week ending 4/6/2022 for supplies.

Vaccinations: [CDC COVID Data Tracker](#). Data include the Moderna, Pfizer BioNTech, and J&J/Janssen COVID-19 vaccines and reflects current data available as of 11:49 EDT on 04/08/2022. Data last updated 06:00 EDT on 04/08/2022. People initiating vaccination include those who have received the first dose of the Moderna or Pfizer-BioNTech vaccine as well as those who have received one dose of the J&J/Janssen vaccine. Population denominators reflect the subset of the population of the corresponding age range.

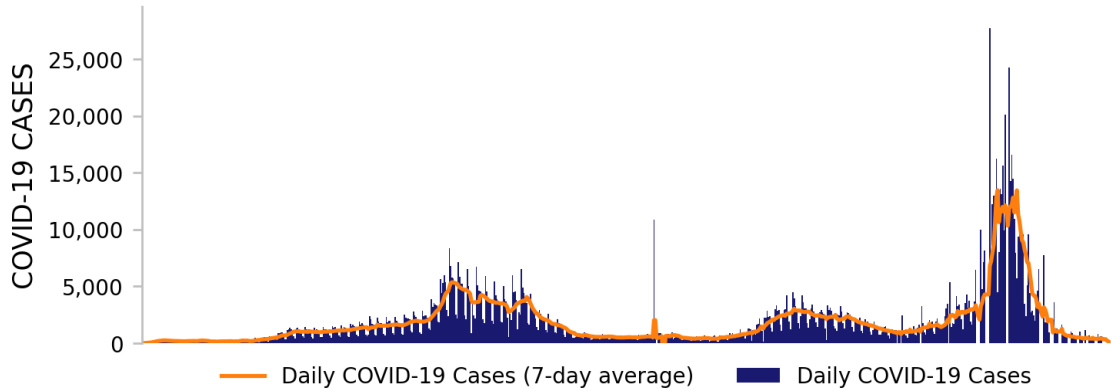
METHODS: Details available on last two pages of report.



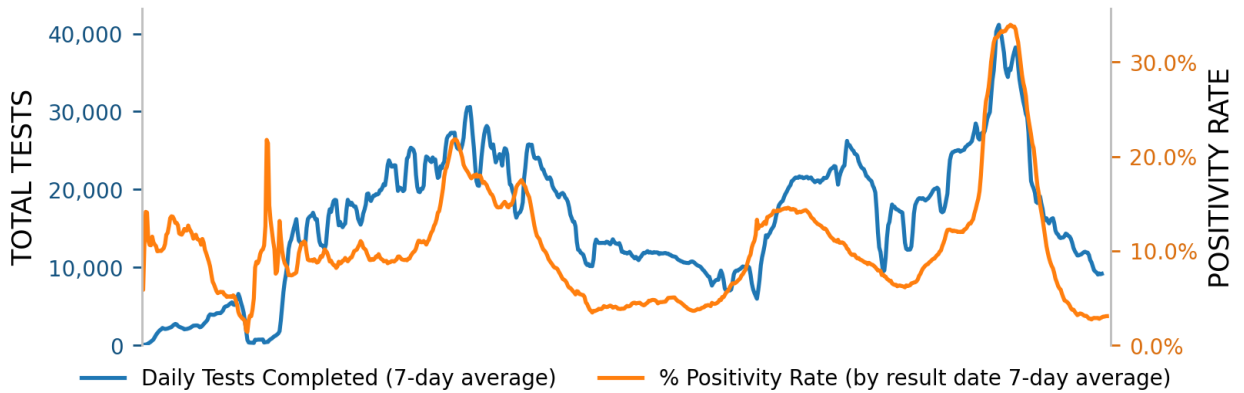
MISSOURI

STATE PROFILE REPORT | 04.08.2022

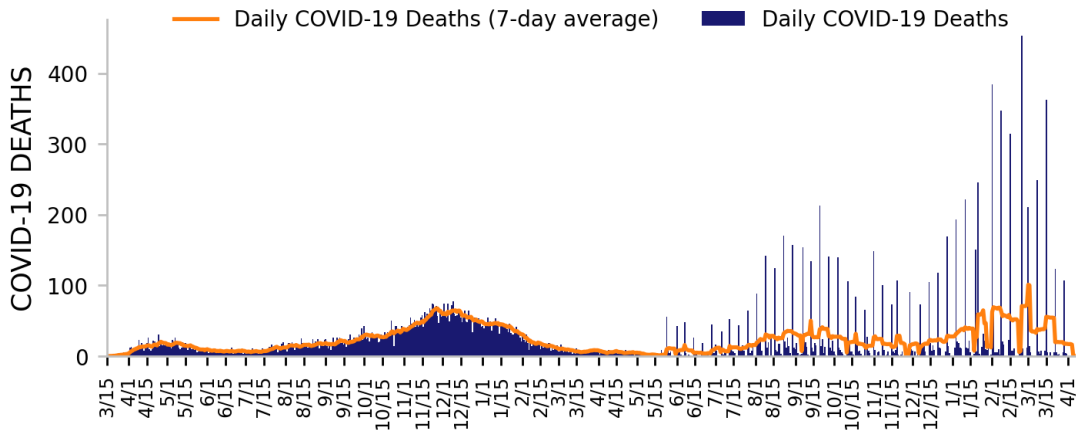
NEW CASES



TESTING



NEW DEATHS



DATA SOURCES

Note: Some dates may have incomplete data due to delays in reporting. Data may be backfilled over time, resulting in week-to-week changes. All three trends share the same horizontal axis shown on the bottom figure.

Cases and Deaths: State values are aggregated data provided by the states to the CDC. Historical cases and deaths exceeding 1% of the total new cases or deaths reported in the US that day have been excluded. Data are through 4/7/2022.

Testing: CELR (COVID-19 Electronic Lab Reporting) state health department-reported data. Test positivity through 4/5/2022. Test volume through 4/1/2022.

METHODS: Details available on last two pages of report.



MISSOURI

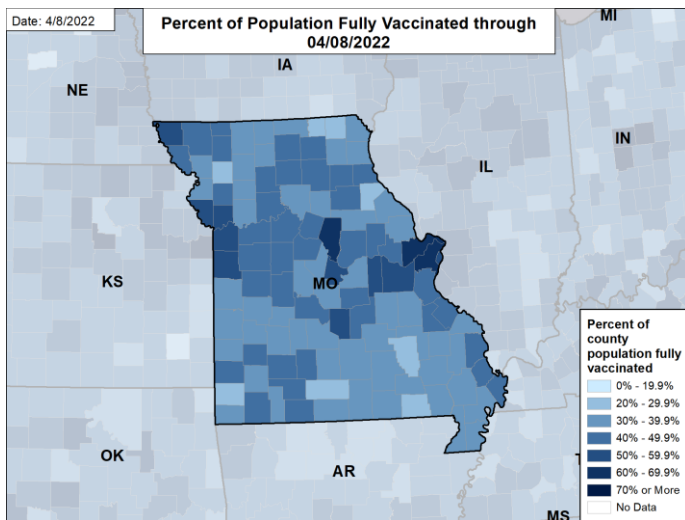
STATE PROFILE REPORT | 04.08.2022

STATE VACCINATION SUMMARY

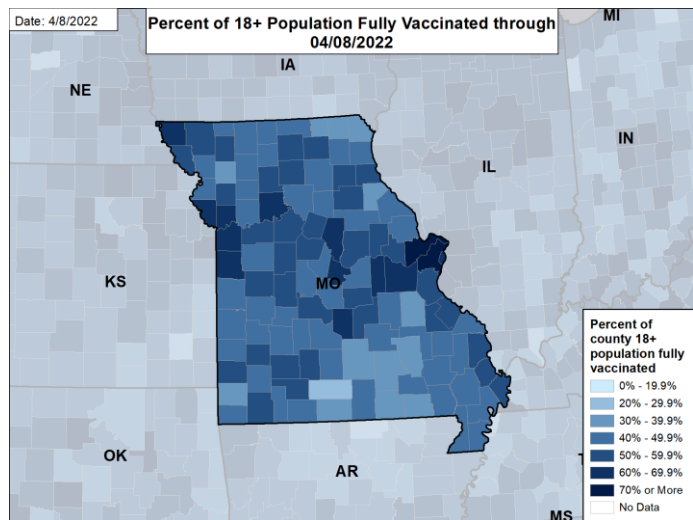
DOSES DELIVERED	11,348,505 184,907 per 100k	DOSES ADMINISTERED	8,801,132 143,401 per 100k
------------------------	--------------------------------	---------------------------	-------------------------------

	RECEIVED AT LEAST ONE DOSE	FULLY VACCINATED	RECEIVED BOOSTER DOSE
ALL PEOPLE	4,044,304 65.9% of total population	3,419,202 55.7% of total population	1,434,303 41.9% of fully vaccinated total pop
PEOPLE 5-11	134,103 25.1% of 5-11 population	103,635 19.4% of 5-11 population	N/A
PEOPLE 12-17	242,048 51.6% of 12-17 population	205,593 43.8% of 12-17 population	40,164 19.5% of fully vaccinated 12-17 pop
PEOPLE 18+	3,667,725 76.9% of 18+ population	3,109,927 65.2% of 18+ population	1,393,912 44.8% of fully vaccinated 18+ pop
PEOPLE 65+	1,015,981 95.0% of 65+ population	888,546 83.7% of 65+ population	582,474 65.6% of fully vaccinated 65+ pop

PERCENT OF POPULATION FULLY VACCINATED



PERCENT OF 18+ POPULATION FULLY VACCINATED



DATA SOURCES

County reporting completeness for Missouri is 91.3%.

Vaccinations: [CDC COVID Data Tracker](#). Data includes the Moderna, Pfizer BioNTech, and J&J/Janssen COVID-19 vaccines and reflects current data available as of 11:49 EDT on 04/08/2022. Data last updated 06:00 EDT on 04/08/2022. Persons who are fully vaccinated include those who have received both doses of the Moderna or Pfizer-BioNTech vaccine as well as those who have received one dose of the J&J/Janssen vaccine.

METHODS: Details available on last two pages of report.

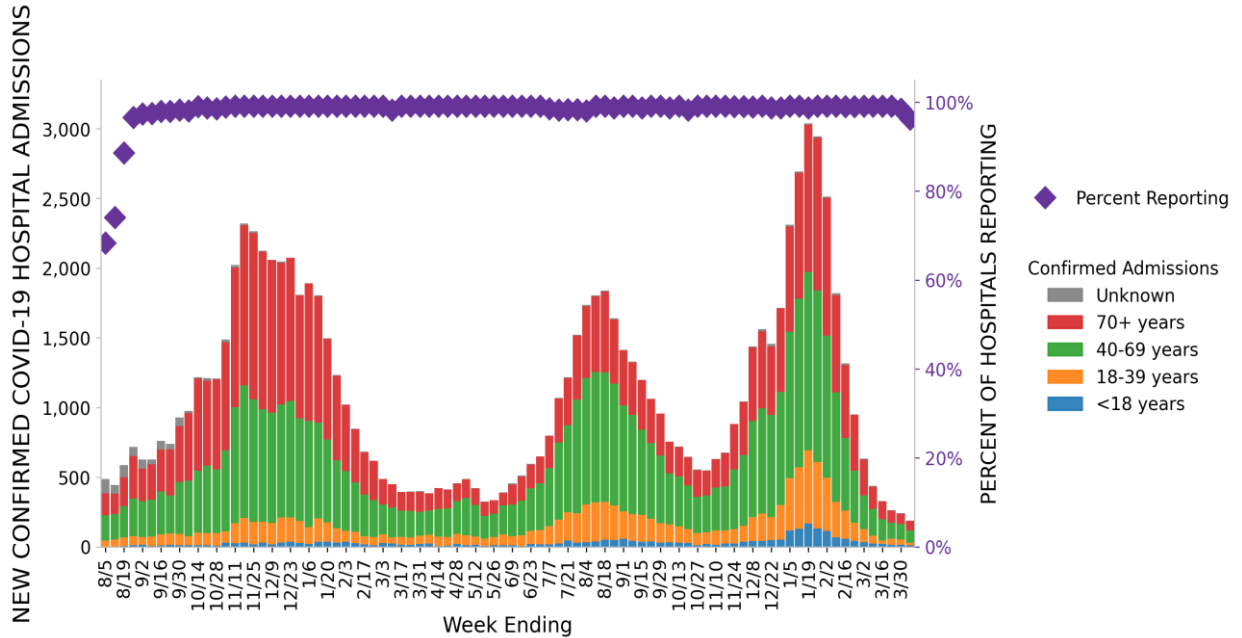


MISSOURI

STATE PROFILE REPORT | 04.08.2022

120 hospitals are expected to report in Missouri

HOSPITAL ADMISSIONS



HOSPITAL PPE SUPPLIES



DATA SOURCES

Hospitalizations: Unified Hospitals Dataset in HHS Protect. These data exclude psychiatric, rehabilitation, and religious non-medical hospitals. Hospitals explicitly identified by states/regions as those from which we should not expect reports were excluded from the percent reporting figure. Data are through 4/6/2022.

PPE: Unified Hospitals Dataset in HHS Protect. These data exclude psychiatric, rehabilitation, and religious non-medical hospitals. Values presented show the latest reports from hospitals in the week ending 4/6/2022.

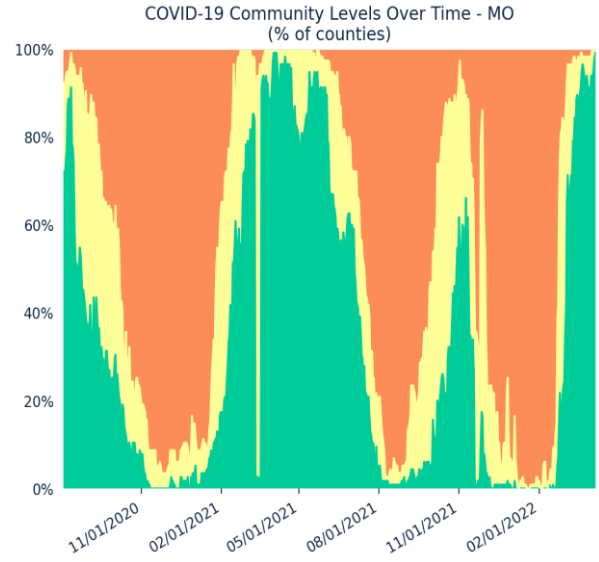
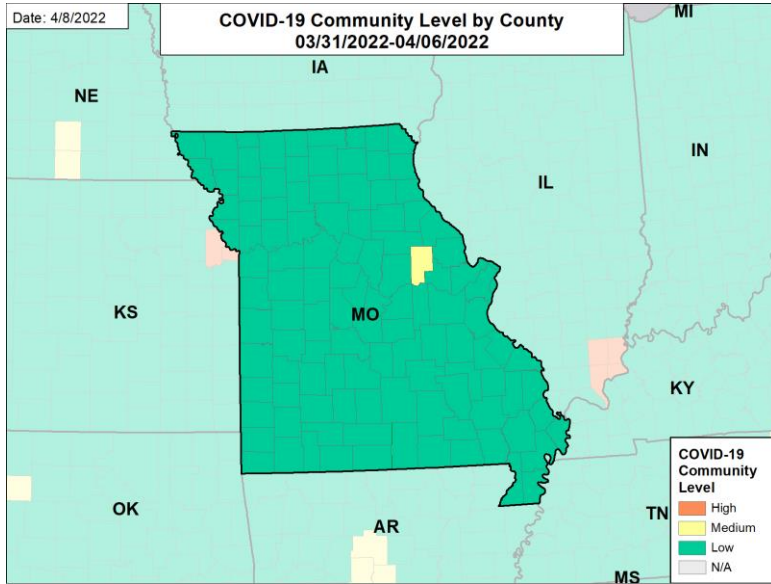
METHODS: Details available on last two pages of report.



MISSOURI

STATE PROFILE REPORT | 04.08.2022

COVID-19 COMMUNITY LEVEL BY COUNTY



COUNTIES BY COVID-19 COMMUNITY LEVEL

CATEGORY	LOW	MEDIUM	HIGH
# OF COUNTIES (CHANGE)	114 (↑10)	1 (↓8)	0 (↓2)

All Low Counties: Adair, Andrew, Atchison, Audrain, Barry, Barton, Bates, Benton, Bollinger, Boone, Buchanan, Butler, Caldwell, Callaway, Camden, Cape Girardeau, Carroll, Carter, Cass, Cedar, Chariton, Christian, Clark, Clay, Clinton, Cole, Cooper, Crawford, Dade, Dallas, Daviess, DeKalb, Dent, Douglas, Dunklin, Franklin, Gasconade, Gentry, Greene, Grundy, Harrison, Henry, Hickory, Holt, Howard, Howell, Iron, Jackson, Jasper, Jefferson, Johnson, Knox, Laclède, Lafayette, Lawrence, Lewis, Lincoln, Linn, Livingston, Macon, Madison, Maries, Marion, McDonald, Mercer, Miller, Mississippi, Moniteau, Monroe, Morgan, New Madrid, Newton, Nodaway, Oregon, Osage, Ozark, Pemiscot, Perry, Pettis, Phelps, Pike, Platte, Polk, Pulaski, Putnam, Ralls, Randolph, Ray, Reynolds, Ripley, Saline, Schuyler, Scotland, Scott, Shannon, Shelby, St. Charles, St. Clair, St. Francois, St. Louis, St. Louis City, Ste. Genevieve, Stoddard, Stone, Sullivan, Taney, Texas, Vernon, Warren, Washington, Wayne, Webster, Worth, Wright

All Medium Counties: Montgomery

DATA SOURCES

Maps and figures reflect 7-day average of data from 3/31-4/6 (cases), 3/30-4/5 (hospital data). Metro areas and counties are listed in alphabetical order.

Note: Most recent days may have incomplete reporting.

Cases: County-level data are from a CDC managed aggregate county dataset compiled from state and local health departments; therefore, the values may not match those reported directly by the state. Data are through 4/6/2022.

Admissions: Unified Hospitals Dataset in HHS Protect. Data are through 4/5/2022.

COVID-19 Community Levels: COVID-19 Community Level is determined by the higher of the new admissions and inpatient bed metrics, based on the current level of new cases per 100,000 population in the past 7 days. See [CDC Community Levels](#). A county is N/A if hospital data is not available. County data is mapped from Health Service Areas, defined as a single county or cluster of counties that are generally self-contained with respect to hospital care. Previous week levels are computed based on current data.

METHODS: Details available on last two pages of report.

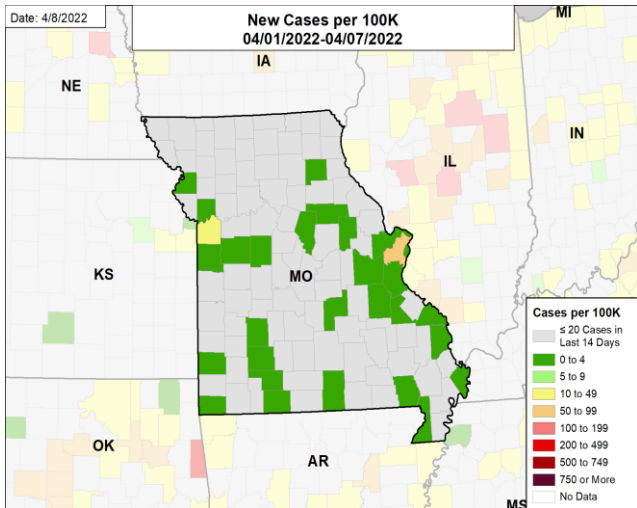


MISSOURI

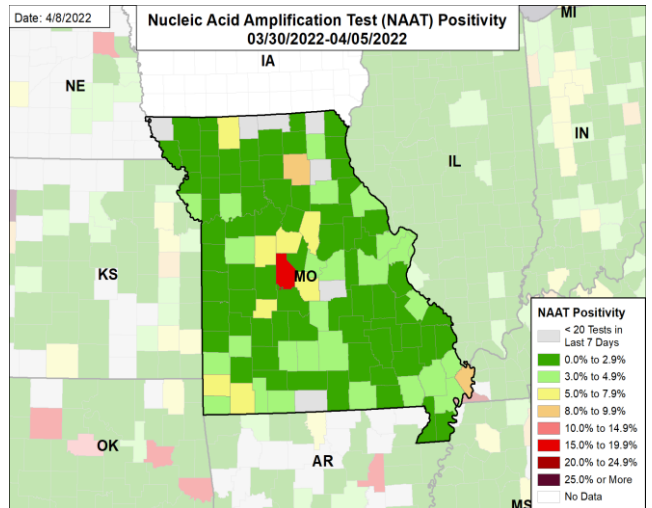
STATE PROFILE REPORT | 04.08.2022

CASE RATES, NAAT POSITIVITY, HOSPITAL ADMISSIONS, AND DEATH RATES

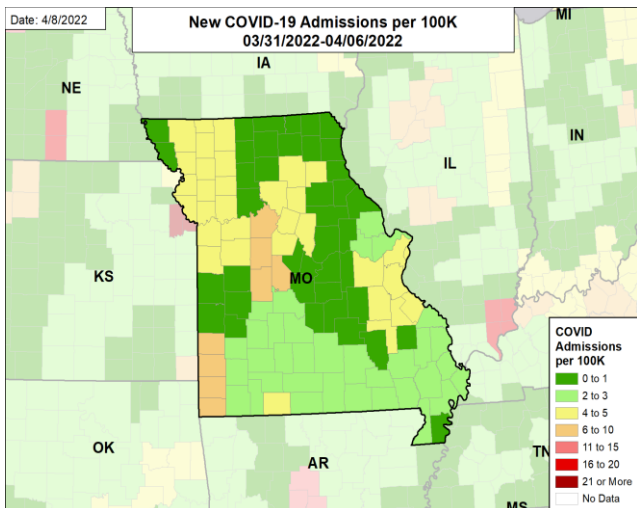
NEW CASES PER 100,000



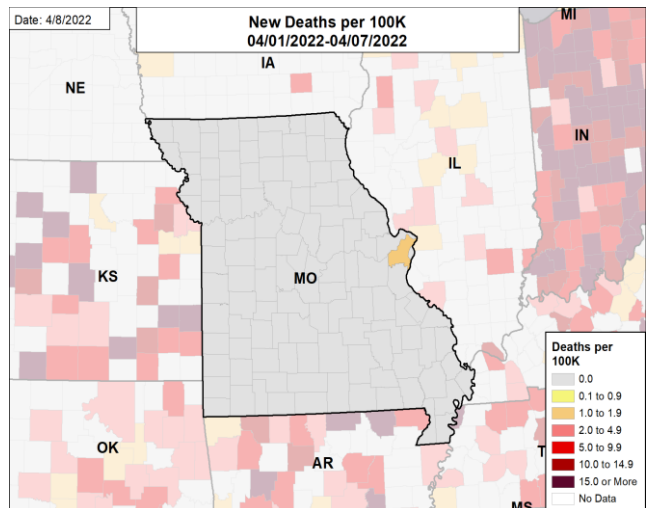
NUCLEIC ACID AMPLIFICATION TEST (NAAT) POSITIVITY



CONFIRMED NEW COVID-19 ADMISSIONS PER 100,000



NEW DEATHS PER 100,000



DATA SOURCES

Note: Some dates may have incomplete data due to delays in reporting. Data may be backfilled over time, resulting in week-to-week changes.

Cases and Deaths: County-level data are from a CDC managed aggregate county dataset compiled from state and local health departments; therefore, the values may not match those reported directly by the state. Data are through 4/7/2022.

Testing: CELR (COVID-19 Electronic Lab Reporting) state health department-reported data. The term Nucleic Acid Amplification Test (NAAT) includes RT-PCR and other testing methods. Data are through 4/5/2022.

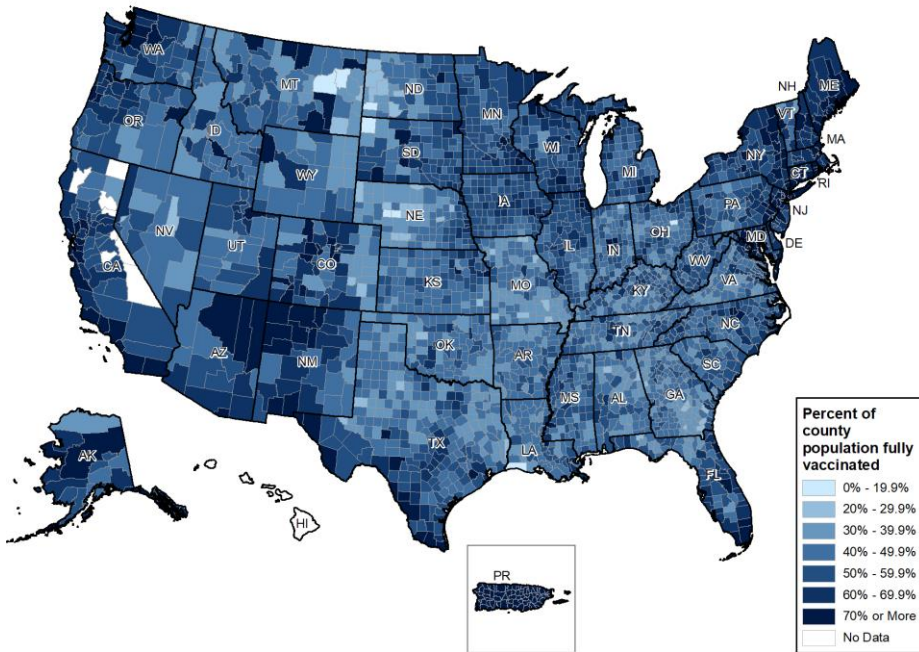
Hospitalizations: Unified Hospitals Dataset in HHS Protect. Totals include only confirmed COVID-19 admissions. County data is mapped from [Health Service Areas](#), defined as a single county or cluster of counties that are generally self contained with respect to hospital care. Hospitals are assigned to an HSA based on county of location. In some cases, reports are aggregates of multiple facilities that cross HSA boundaries; in these cases, values are assigned based on the county for the aggregate. Data are through 4/6/2022.

METHODS: Details available on last two pages of report.



National Picture: Vaccinations

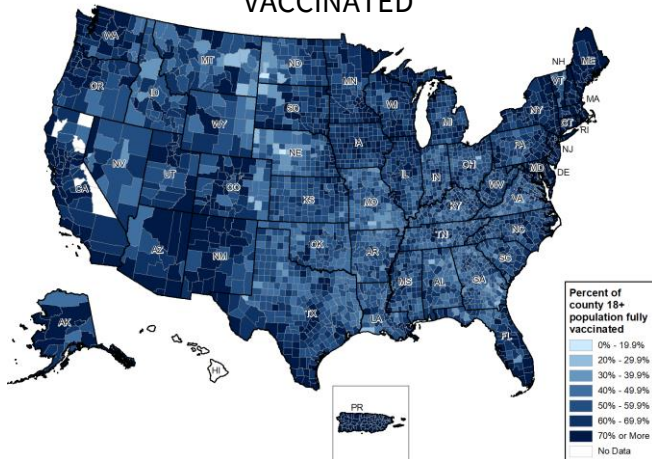
PERCENT OF POPULATION FULLY VACCINATED



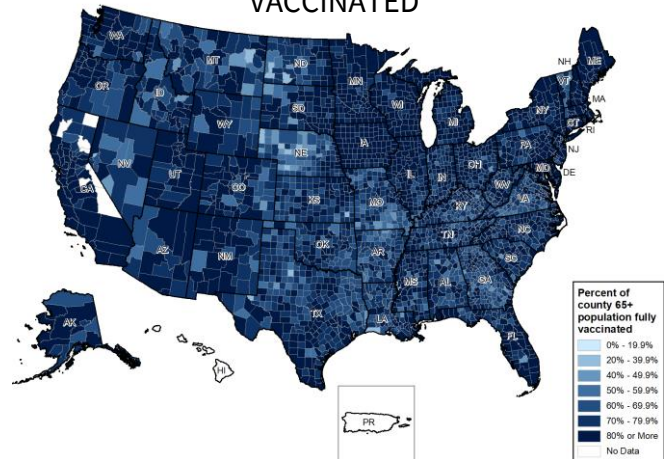
NATIONAL RANKING OF POPULATION FULLY VACCINATED

National Rank	State	National Rank	State
1	PR	27	AK
2	RI	28	IA
3	VT	29	AZ
4	ME	30	TX
5	CT	31	KS
6	MA	32	SD
7	HI	33	NV
8	NY	34	NC
9	MD	35	MI
10	NJ	36	OH
11	DC	37	WV
12	VA	38	KY
13	WA	39	OK
14	CA	40	SC
15	NM	41	MT
16	CO	42	MO
17	NH	43	ND
18	OR	44	IN
19	MN	45	GA
20	DE	46	TN
21	IL	47	AR
22	PA	48	ID
23	FL	49	LA
24	WI	50	MS
25	UT	51	WY
26	NE	52	AL

PERCENT OF 18+ POPULATION FULLY VACCINATED



PERCENT OF 65+ POPULATION FULLY VACCINATED



DATA SOURCES

Vaccinations: [CDC COVID Data Tracker](#). Data includes the Moderna, Pfizer BioNTech, and J&J/Janssen COVID-19 vaccines and reflects current data available as of 11:49 EDT on 04/08/2022. Data last updated 06:00 EDT on 04/08/2022. Persons who are fully vaccinated include those who have received both doses of the Moderna or Pfizer-BioNTech vaccine as well as those who have received one dose of the J&J/Janssen vaccine. The following states have ≤80% completeness reporting vaccinations by county, which may result in underestimates of vaccination data for counties: VA (79%), VT (74%), and HI (0%).

METHODS: Details available on last two pages of report.

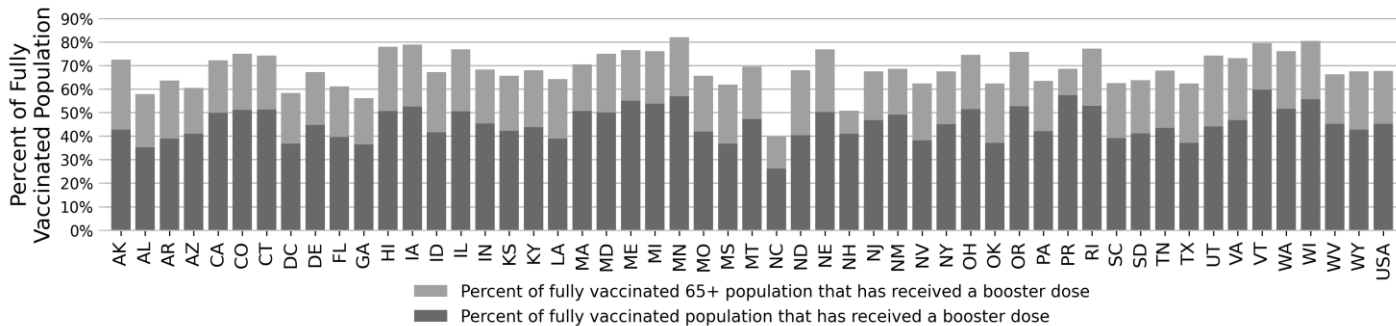
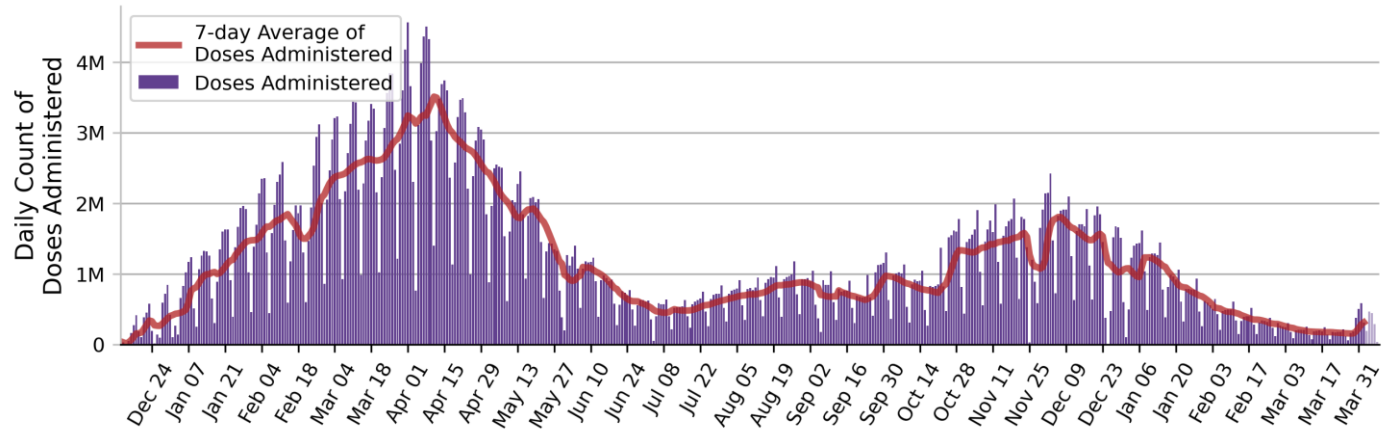


National Picture: Vaccinations

NATIONAL COVID-19 VACCINE SUMMARY AS OF 4/8

DOSES DELIVERED	710,119,045 213,886 per 100k	DOSES ADMINISTERED	564,572,230 170,047 per 100k
PEOPLE RECEIVED AT LEAST ONE DOSE	256,062,152 77.1% of total pop.	PEOPLE FULLY VACCINATED	218,235,689 65.7% of total pop.
PEOPLE 5-11 RECEIVED AT LEAST ONE DOSE	9,965,024 34.7% of 5-11 pop.	PEOPLE 5-11 FULLY VACCINATED	8,036,079 28.0% of 5-11 pop.
PEOPLE 12-17 RECEIVED AT LEAST ONE DOSE	17,367,540 68.8% of 12-17 pop.	PEOPLE 12-17 FULLY VACCINATED	14,835,114 58.7% of 12-17 pop.
PEOPLE 18+ RECEIVED AT LEAST ONE DOSE	228,632,337 88.5% of 18+ pop.	PEOPLE 18+ FULLY VACCINATED	195,324,155 75.6% of 18+ pop.
PEOPLE 65+ RECEIVED AT LEAST ONE DOSE	56,348,247 95.0% of 65+ pop.	PEOPLE 65+ FULLY VACCINATED	48,951,449 89.3% of 65+ pop.
PEOPLE RECEIVED BOOSTER DOSE	98,533,836 45.2% of fully vaccinated total pop.	PEOPLE 65+ RECEIVED BOOSTER DOSE	33,129,868 67.7% of fully vaccinated 65+ pop.

DAILY NATIONAL COUNT OF VACCINE DOSES ADMINISTERED BY DATE OF ADMINISTRATION



DATA SOURCES

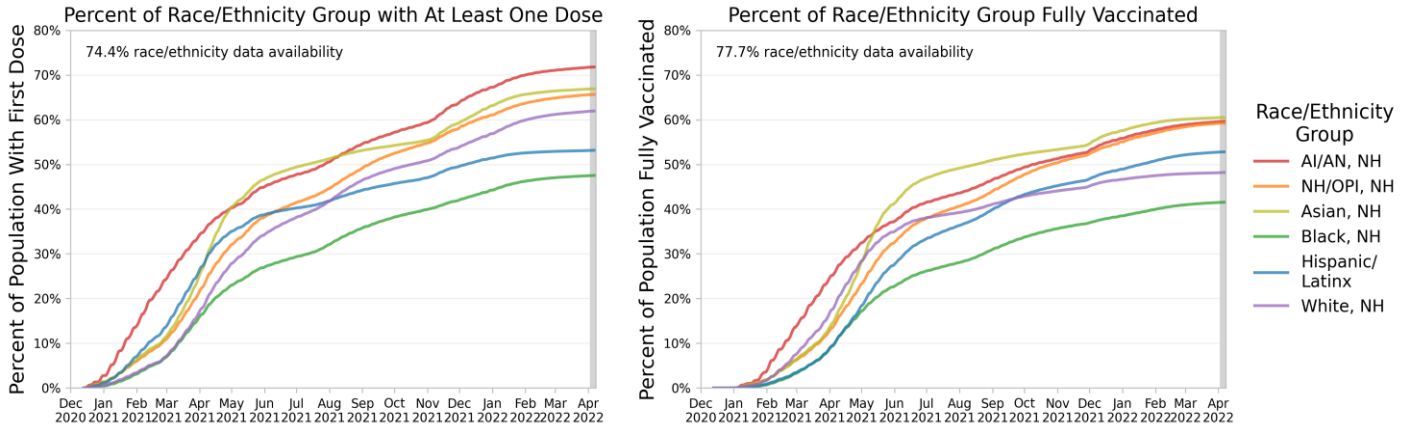
Vaccinations: [CDC COVID Data Tracker](#). Data includes the Moderna, Pfizer BioNTech, and J&J/Janssen COVID-19 vaccines and reflects current data available as of 11:49 EDT on 04/08/2022. Data last updated 06:00 EDT on 04/08/2022. Persons who are fully vaccinated include those who have received both doses of the Moderna or Pfizer-BioNTech vaccine as well as those who have received one dose of the J&J/Janssen vaccine. The count of people who received a booster dose includes anyone who is fully vaccinated and has received another dose of COVID-19 vaccine since August 13, 2021. This includes people who received booster doses and people who received additional doses. Due to delays in reporting, data on doses administered in recent days (as reflected by lighter purple coloring in the Daily National Count figure) may be an underestimate of the actual value.

METHODS: Details available on last two pages of report.

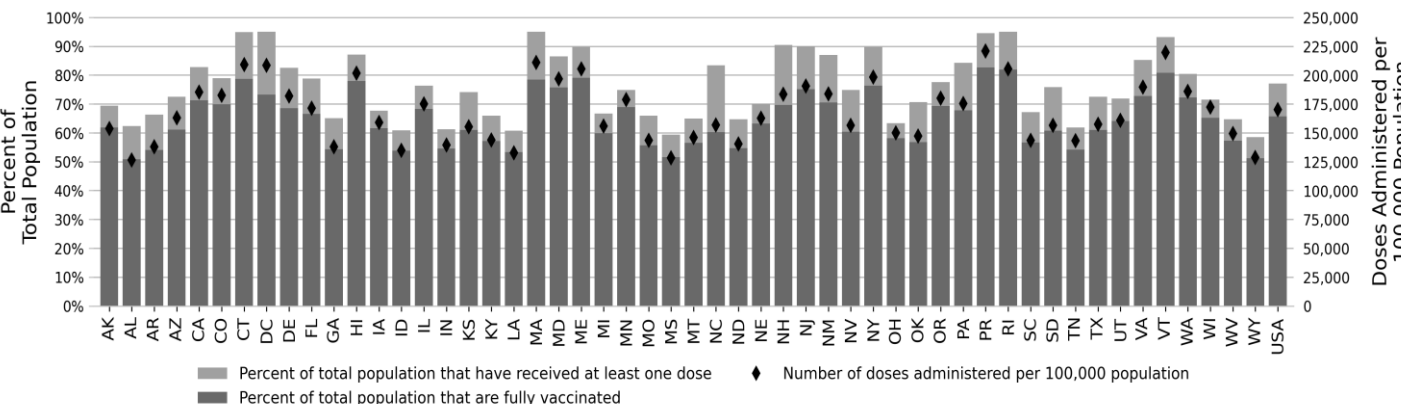
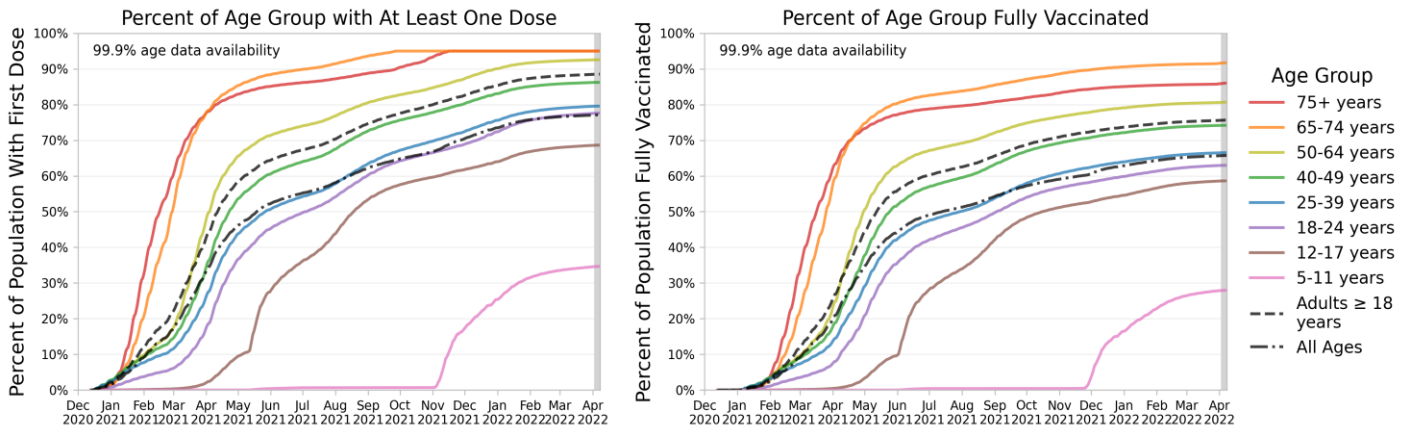


National Picture: Vaccinations

NATIONAL SUMMARY OF VACCINATIONS BY RACE/ETHNICITY



NATIONAL SUMMARY OF VACCINATIONS BY AGE



DATA SOURCES

Vaccinations: [CDC COVID Data Tracker](#). Data includes the Moderna, Pfizer BioNTech, and J&J/Janssen COVID-19 vaccines and reflects current data available as of 11:49 EDT on 04/08/2022. Data last updated 06:00 EDT on 04/08/2022. Persons who are fully vaccinated include those who have received both doses of the Moderna or Pfizer-BioNTech vaccine as well as those who have received one dose of the J&J/Janssen vaccine. Race/Ethnicity data were available for 74.4% receiving at least one dose and 77.7% fully vaccinated. Age data were available for 100.0% receiving at least one dose and 100.0% fully vaccinated. Texas does not report demographic-specific dose number information to CDC, so data for Texas are not represented in demographic trends figures. "NH" stands for Non-Hispanic/Latinx, "AI/AN" stands for American Indian or Alaska Native, and "NH/PI" stands for Native Hawaiian or Pacific Islander.

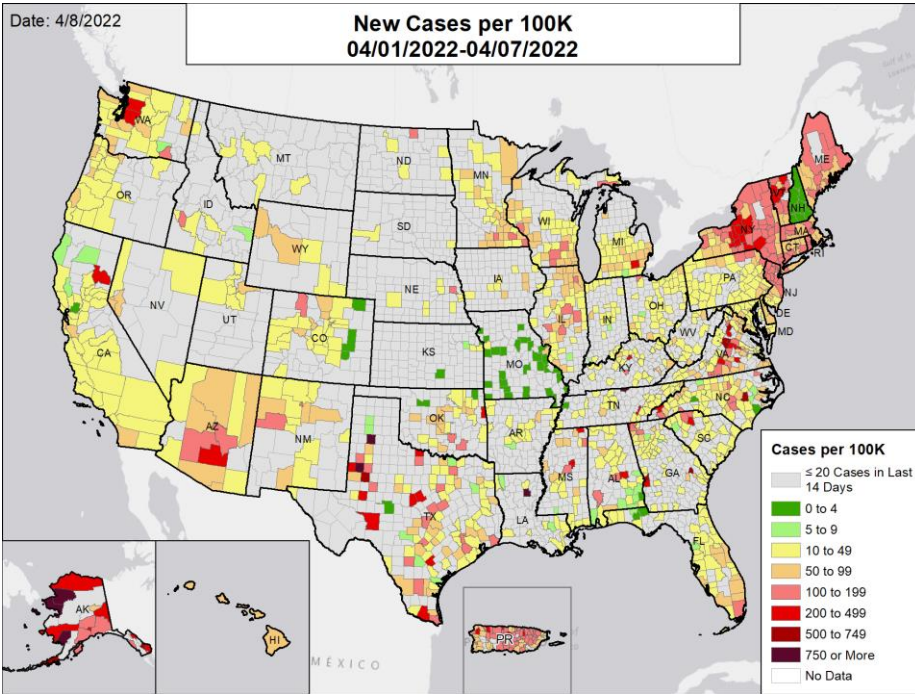
METHODS: Details available on last two pages of report.



National Picture: Cases

NEW CASES PER 100,000

NATIONAL RANKING OF NEW CASES PER 100,000



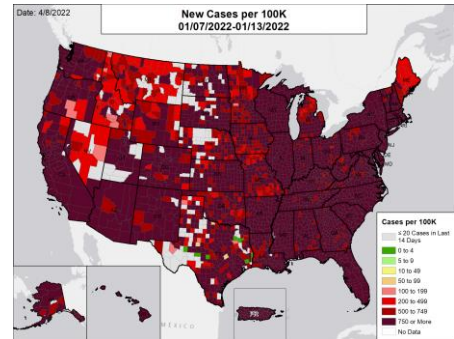
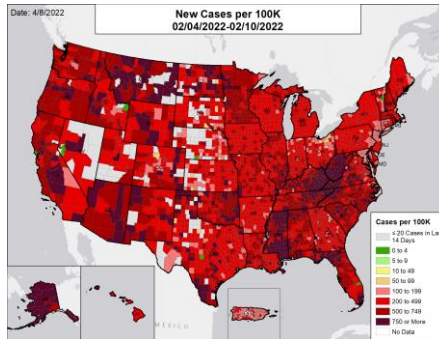
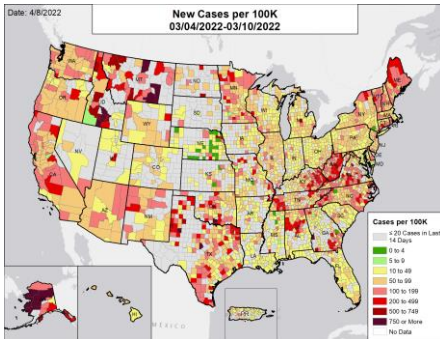
National Rank	State	National Rank	State
1	MO	27	MI
2	KS	28	MD
3	SC	29	OR
4	SD	30	TX
5	NE	31	FL
6	LA	32	MN
7	IN	33	CO
8	AR	34	WI
9	UT	35	WA
10	TN	36	DE
11	NC	37	NH
12	MT	38	VA
13	AL	39	KY
14	WY	40	IL
15	GA	41	HI
16	WV	42	AZ
17	IA	43	CT
18	ND	44	DC
19	ID	45	ME
20	OH	46	PR
21	CA	47	NJ
22	MS	48	MA
23	OK	49	NY
24	NV	50	RI
25	PA	51	VT
26	NM	52	AK

NEW CASES PER 100,000 IN THE WEEK:

ONE MONTH BEFORE

TWO MONTHS BEFORE

THREE MONTHS BEFORE



DATA SOURCES

Note: Some dates may have incomplete data due to delays in reporting. Data may be backfilled over time, resulting in week-to-week changes.

Cases: County-level data are from a CDC managed aggregate county dataset compiled from state and local health departments; therefore, the values may not match those reported directly by the state. State values are aggregated data provided by the states to the CDC. The week one month before is from 3/4 to 3/10; the week two months before is from 2/4 to 2/10; the week three months before is from 1/7 to 1/13. New Hampshire has not reported county-level case/death data for the past week.

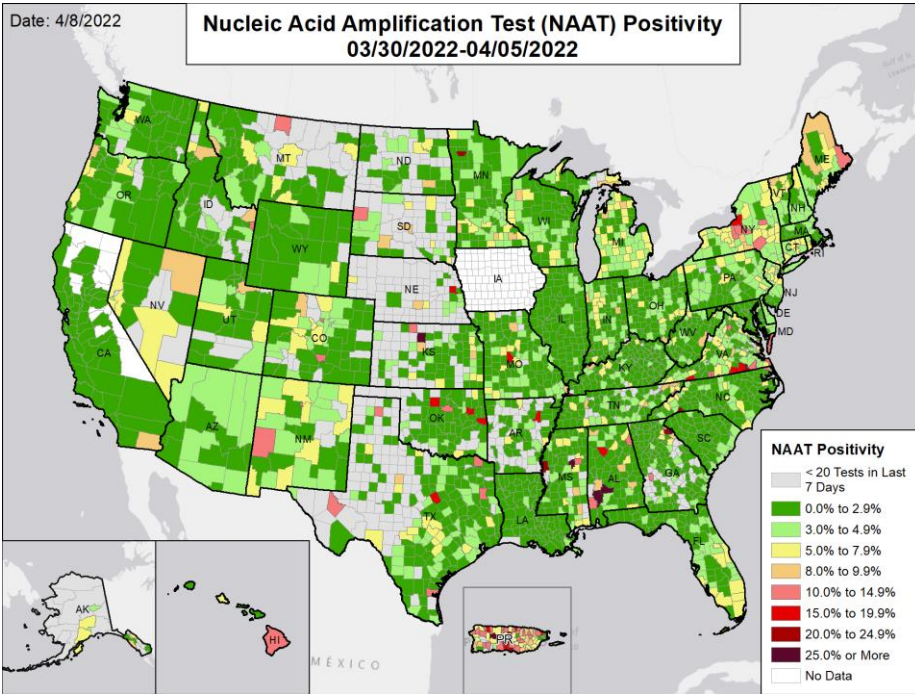
METHODS: Details available on last two pages of report.



National Picture: NAAT Positivity

NUCLEIC ACID AMPLIFICATION TEST (NAAT) POSITIVITY

NATIONAL RANKING OF NAAT POSITIVITY



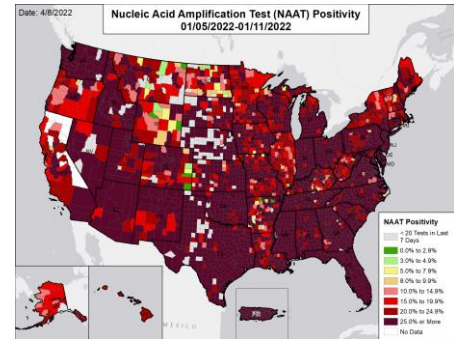
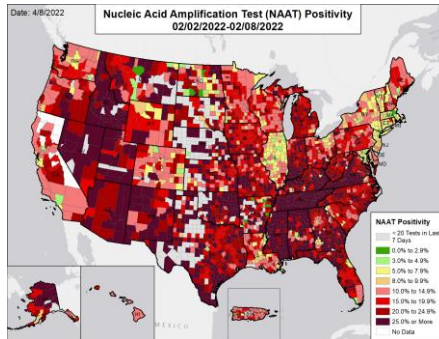
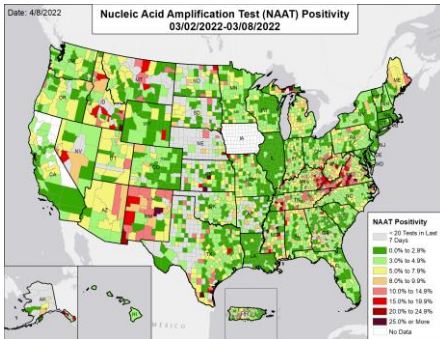
National Rank	State	National Rank	State
1	LA	27	SD
2	CA	28	MO
3	TN	29	CO
4	MD	30	MS
5	WY	31	PA
6	SC	32	NH
7	IL	33	MN
8	GA	34	NM
9	KY	35	WI
10	DC	36	NE
11	AR	37	DE
12	MT	38	NY
13	WV	39	ME
14	OH	40	WA
15	ND	41	NJ
16	MA	42	FL
17	AL	43	CT
18	OR	44	MI
19	IN	45	RI
20	UT	46	VA
21	ID	47	NV
22	KS	48	AK
23	TX	49	VT
24	OK	50	HI
25	NC	51	PR
26	AZ	--	IA

NUCLEIC ACID AMPLIFICATION TEST (NAAT) POSITIVITY IN THE WEEK:

ONE MONTH BEFORE

TWO MONTHS BEFORE

THREE MONTHS BEFORE



DATA SOURCES

Note: Some dates may have incomplete data due to delays in reporting. Data may be backfilled over time, resulting in week-to-week changes.

Testing: CELR (COVID-19 Electronic Lab Reporting) state health department-reported data. The term Nucleic Acid Amplification Test (NAAT) includes RT-PCR and other testing methods. Data are through 4/5/2022. The week one month before is from 3/2 to 3/8; the week two months before is from 2/2 to 2/8; the week three months before is from 1/5 to 1/11. As of February 17, 2022, Iowa is no longer reporting negative test results; therefore, test volume and test positivity from this date forward is no longer presented. Due to technical issues, Washington's test positivity and test volume between 9/1/2021 and 1/31/2022 may be incomplete.

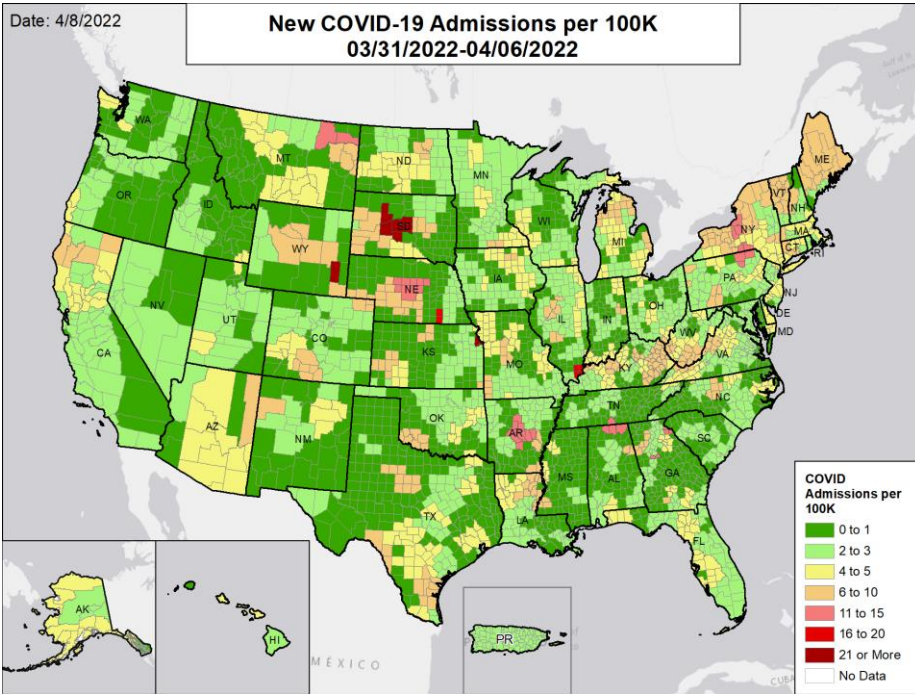
METHODS: Details available on last two pages of report.



National Picture: Hospital Admissions

CONFIRMED NEW COVID-19 ADMISSIONS PER 100,000

NATIONAL RANKING OF CONFIRMED ADMISSIONS PER 100,000



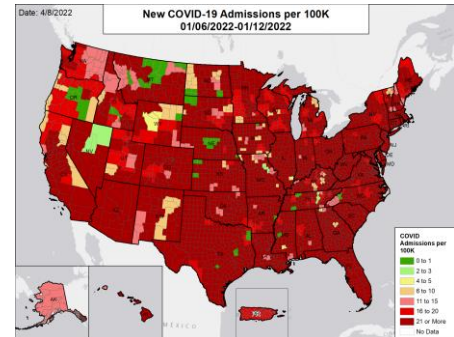
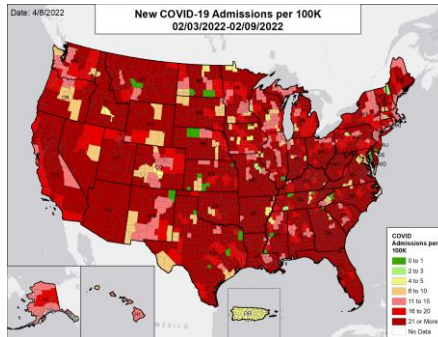
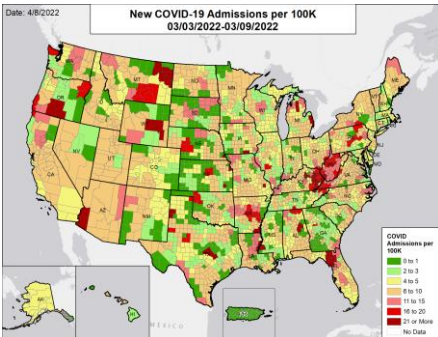
National Rank	State	National Rank	State
1	MS	27	IA
2	ID	28	MN
3	SC	29	MO
4	TN	30	FL
5	PR	31	TX
6	CO	32	RI
7	IN	33	WY
8	OR	34	SD
9	MT	35	IL
10	MD	36	DC
11	WA	37	DE
12	VA	38	HI
13	LA	39	MA
14	NC	40	MI
15	CA	41	KS
16	NM	42	NJ
17	UT	43	NH
18	AL	44	AZ
19	NE	45	KY
20	OK	46	CT
21	PA	47	WV
22	OH	48	NY
23	GA	49	AK
24	WI	50	ME
25	ND	51	AR
26	NV	52	VT

CONFIRMED NEW COVID-19 ADMISSIONS PER 100,000 IN THE WEEK:

ONE MONTH BEFORE

TWO MONTHS BEFORE

THREE MONTHS BEFORE



DATA SOURCES

Note: Some dates may have incomplete data due to delays in reporting. Data may be backfilled over time, resulting in week-to-week changes.

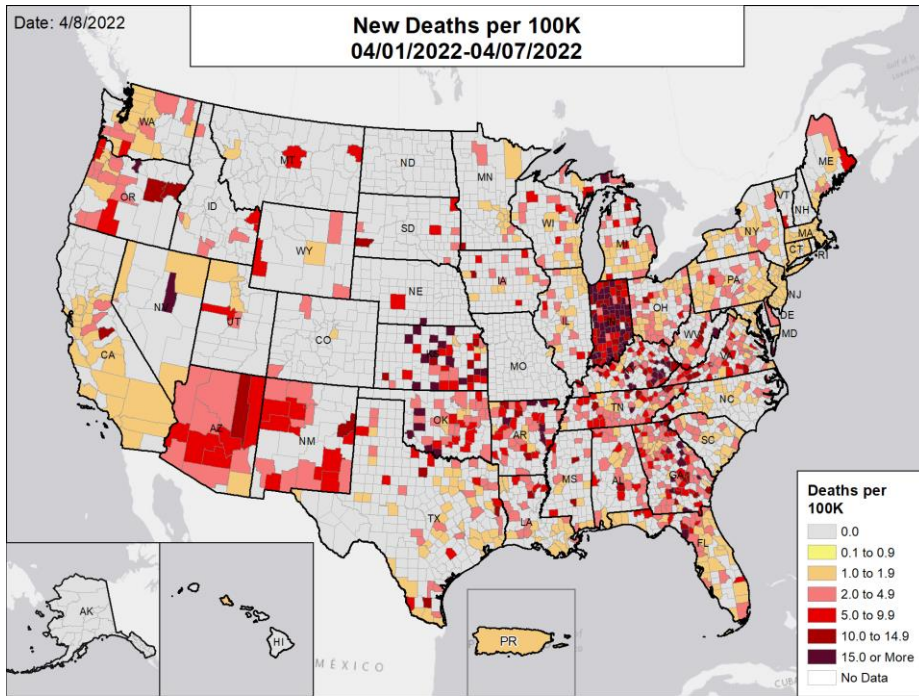
Admissions: Unified Hospitals Dataset in HHS Protect through 4/6/2022. Totals include only confirmed COVID-19 admissions. The week one month before is from 3/3 to 3/9; the week two months before is from 2/3 to 2/9; the week three months before is from 1/6 to 1/12. County data is mapped from [Health Service Areas](#), defined as a single county or cluster of counties that are generally self contained with respect to hospital care. Hospitals are assigned to an HSA based on county of location. In some cases, reports are aggregates of multiple facilities that cross HSA boundaries; in these cases, values are assigned based on the county for the aggregate.

METHODS: Details available on last two pages of report.



National Picture: Deaths

NEW DEATHS PER 100,000

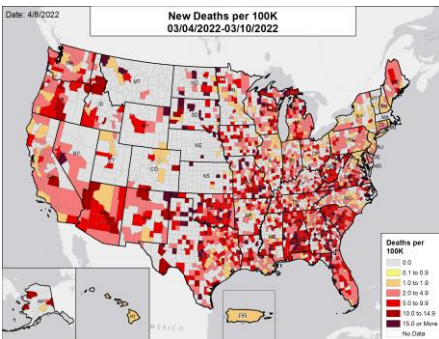


NATIONAL RANKING OF NEW DEATHS PER 100,000

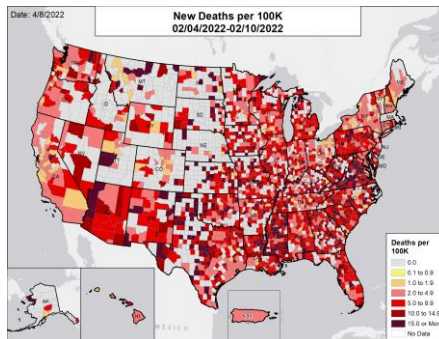
National Rank	State	National Rank	State
1	AK	27	MT
2	OK	28	ND
3	MO	29	WA
4	AL	30	IN
5	NC	31	MI
6	PR	32	WY
7	CO	33	PA
8	FL	34	LA
9	RI	35	OH
10	HI	36	ID
11	IA	37	SD
12	NY	38	SC
13	NH	39	ME
14	MD	40	NV
15	MS	41	VA
16	VT	42	AR
17	UT	43	DE
18	MA	44	GA
19	CT	45	WV
20	CA	46	OR
21	TX	47	KS
22	MN	48	NM
23	NJ	49	KY
24	WI	50	TN
25	IL	51	AZ
26	NE	-	DC

NEW DEATHS PER 100,000 IN THE WEEK:

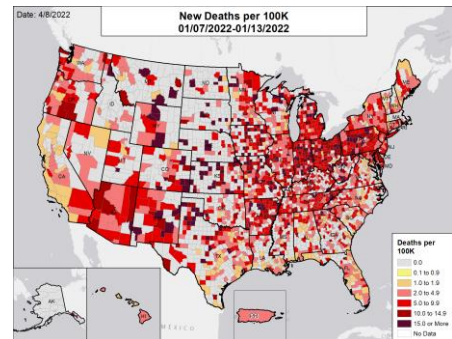
ONE MONTH BEFORE



TWO MONTHS BEFORE



THREE MONTHS BEFORE



DATA SOURCES

Note: Some dates may have incomplete data due to delays in reporting. Data may be backfilled over time, resulting in week-to-week changes. Some states report deaths by date of death, periodically backfilling from their data by date of report. This can result in under-estimates or fluctuations in the number of deaths reported in the last week.

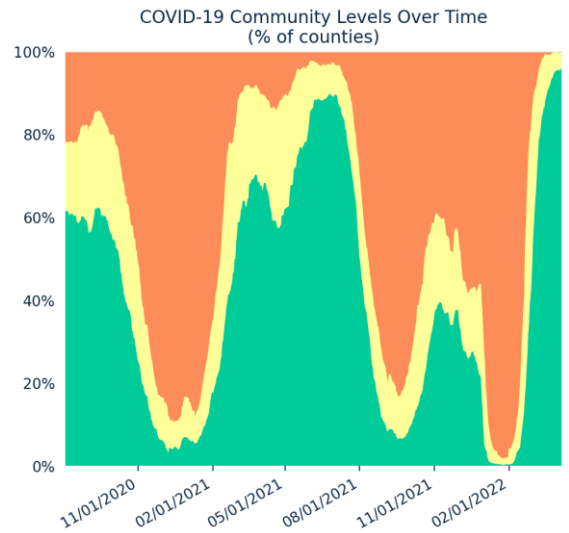
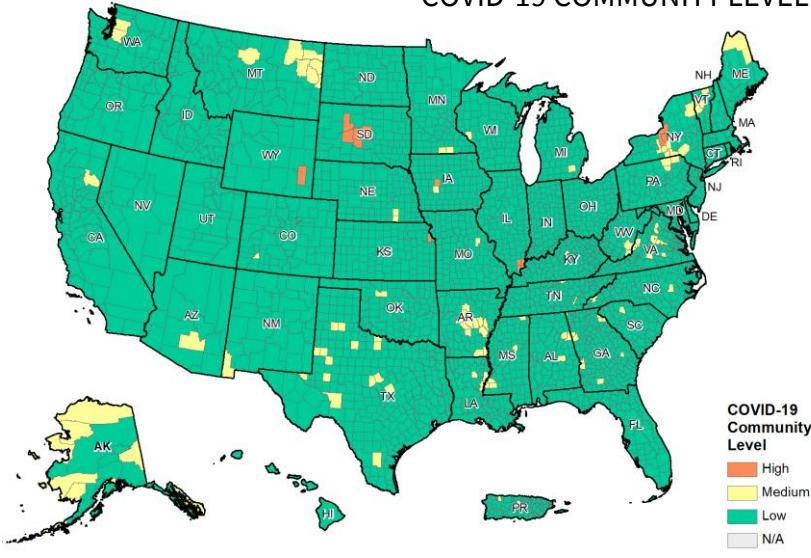
Deaths: County-level data are from a CDC managed aggregate county dataset compiled from state and local health departments; therefore, the values may not match those reported directly by the state. State values are aggregated data provided by the states to the CDC. As of 3/2/2021, Ohio changed their method of reporting COVID-19 deaths and will report deaths on the day of death, not the day of report, which could result in a fluctuation in the number of deaths from recent weeks due to delayed reporting. Puerto Rico is shown at the territory level as deaths are not reported at the municipio level. The week one month before is from 3/4 to 3/10; the week two months before is from 2/4 to 2/10; the week three months before is from 1/7 to 1/13. The District of Columbia issued a correction to their state-level deaths, resulting in a negative number of deaths in the last week; as such weekly counts and week-on-week changes are not reflective of true values. New Hampshire has not reported county-level case/death data for the past week.

METHODS: Details available on last two pages of report.



National Picture: COVID-19 Community Level

COVID-19 COMMUNITY LEVEL BY COUNTY



COUNTIES BY COVID-19 COMMUNITY LEVEL COMPONENT METRICS

<200 CASES PER 100K			
ADMISSIONS PER 100K	<10.0	10.0 TO 19.9	20.0+
# OF COUNTIES (CHANGE)	3,080 (↑13)	47 (↓25)	13 (↑7)
% OF COUNTIES (CHANGE)	95.7% (↑0.4%)	1.5% (↓0.8%)	0.4% (↑0.2%)
COVID INPATIENT OCCUPANCY	<10.0%	10.0% TO 14.9%	15.0%+
# OF COUNTIES (CHANGE)	3,135 (↓1)	0 (↓4)	0 (↓2)
% OF COUNTIES (CHANGE)	97.4% (↓0.0%)	0.0% (↓0.1%)	0.0% (↓0.1%)
200+ CASES PER 100K			
ADMISSIONS PER 100K	N/A	<10.0	10.0+
# OF COUNTIES (CHANGE)	N/A	75 (↑5)	5 (0)
% OF COUNTIES (CHANGE)	N/A	2.3% (↑0.2%)	0.2% (0.0%)
COVID INPATIENT OCCUPANCY	N/A	<10.0%	10.0%+
# OF COUNTIES (CHANGE)	N/A	79 (↑4)	0 (0)
% OF COUNTIES (CHANGE)	N/A	2.5% (↑0.1%)	0.0% (0.0%)

COUNTIES BY COVID-19 COMMUNITY LEVEL

CATEGORY	LOW	MEDIUM	HIGH
# OF COUNTIES (CHANGE)	3,080 (↑19)	122 (↓24)	18 (↑5)
% OF COUNTIES (CHANGE)	95.7% (↑0.6%)	3.8% (↓0.7%)	0.6% (↑0.2%)

DATA SOURCES

Maps and figures reflect 7-day average of data from 3/31-4/6 (cases), 3/30-4/5 (hospital data).

Note: Most recent days may have incomplete reporting.

Cases: County-level data are from a CDC managed aggregate county dataset compiled from state and local health departments; therefore, the values may not match those reported directly by the state. Data are through 4/6/2022. New Hampshire has not reported county-level case/death data for the past week.

Admissions: Unified Hospitals Dataset in HHS Protect. Data are through 4/5/2022.

County Percentages: Based on a denominator of 3,220 county/county-equivalents, including states, the District of Columbia, and Puerto Rico municipios.

COVID-19 Community Levels: COVID-19 Community Level is determined by the higher of the new admissions and inpatient bed metrics, based on the current level of new cases per 100,000 population in the past 7 days. See [CDC Community Levels](#). A county is N/A if hospital data is not available. County data is mapped from Health Service Areas, defined as a single county or cluster of counties that are generally self-contained with respect to hospital care. Previous week levels are computed based on current data.

METHODS: Details available on last two pages of report.



DATA SOURCES & METHODS

STATE PROFILE REPORT | 04.08.2022

- **Some dates may have incomplete data due to delays and/or differences in state reporting. Data may be backfilled over time, resulting in week-to-week changes between reports. It is critical that states provide as up-to-date data as possible. Figures and values may also differ from state reports due to differing methodologies. For more information, see [CDC COVID Data Tracker](#).**
- All population values are vintage 2019 US Census data.
- **Cases and Deaths:** County-level data are from a CDC-managed aggregate county dataset compiled from state and local health departments; therefore, the values may not match those reported directly by the state. State values are aggregated data provided by the states to the CDC. Data and week-on-week changes are as of 12:16 EDT on 04/08/2022. Cases and deaths are generally shown by date of report. Some states periodically adjust their past data with CDC to show it by case date and death date, as determined by the state. Between adjustments, new cases and deaths continue to be shown by date of report. This can potentially lead to over-estimates of the week-on-week increases in cases or deaths. As of October 25, 2021, CDC no longer spreads aggregate COVID-19 case and death counts evenly over non-reporting days (i.e., smoothing), to avoid under-reporting of weekend averages.
 - As of 3/2/2021, Ohio changed their method of reporting COVID-19 deaths and will report deaths on the day of death, not the day of report, which could result in a fluctuation in the number of deaths from recent weeks due to delayed reporting.
 - Puerto Rico deaths are shown at the territory level as deaths are not reported at the municipality level.
 - The District of Columbia issued a correction to their state-level deaths, resulting in a negative number of deaths in the last week; as such weekly counts and week-on-week changes are not reflective of true values.
 - New Hampshire has not reported county-level case/death data for the past week.
 - Historical reports of cases and deaths — for which backfill dates are not available — that exceed 1% of the total new cases or deaths reported in the US that day have been excluded from state daily and weekly trends. However, these are still present in county-level data. Historical reports in the last two weeks (3/25/22 – 4/7/22) are:
 - Georgia cases: 8,500 on 3/30; 2,000 on 3/31; and 350 on 4/1
 - Kentucky cases: 147 on 3/29
 - Texas cases: 1,025 on 3/25; 3,085 on 3/26; 1,951 on 3/29; 563 on 3/30; 3,736 on 3/31; 508 on 4/1; and 1,096 on 4/2
 - Washington cases: 5,000 on 4/6
 - West Virginia deaths: -130 on 4/5
- **Testing:** The data presented represent viral COVID-19 laboratory diagnostic and screening test results — not individual people — and exclude antibody and antigen tests, unless stated otherwise. The term Nucleic Acid Amplification Test (NAAT) includes RT-PCR and other testing methods, which were always included in the testing data. CELR (COVID-19 Electronic Lab Reporting) state health department-reported data are used to describe county-level viral COVID-19 NAAT result totals when information is available on patients' county of residence or healthcare providers' practice location. Because the data are deidentified, total NAATs are the number of tests performed, not the number of individuals tested. NAAT positivity rate is the number of positive tests divided by the number of tests performed and resulted. For test positivity, last week data are from 3/30 to 4/5; previous week data are from 3/23 to 3/29; the week one month before data are from 3/2 to 3/8. For number of tests, last week data are from 3/26 to 4/1; previous week data are from 3/19 to 3/25. HHS Protect data are recent as of 10:03 EDT on 04/08/2022. Testing data are inclusive of everything received and processed by the CELR system as of 19:00 EDT on 04/07/2022.
 - Due to technical issues, Washington's test positivity and test volume between 9/1/2021 and 1/31/2022 may be incomplete.
- **Hospitalizations:** Unified Hospitals Dataset in HHS Protect. These data exclude psychiatric, rehabilitation, and religious non-medical hospitals. In addition, hospitals explicitly identified by states/regions as those from which we should not expect reports were excluded from the percent reporting figure. The data presented represents raw data provided; we are working diligently with state liaisons to improve reporting consistency. Data are recent as of 11:37 EDT on 04/08/2022.
- **Hospital PPE:** Unified Hospitals Dataset in HHS Protect. This figure may differ from state data due to differences in hospital lists and reporting between federal and state systems. These data exclude psychiatric, rehabilitation, and religious non-medical hospitals. Hospitals explicitly identified by states/regions as those from which we should not expect reports were excluded from the percent reporting figure. Data are recent as of 11:28 EDT on 04/08/2022.
- **COVID-19 Community Levels**
 - **High:** Those counties that during the last week reported 200 or more cases per 100,000 population with either a percentage of staffed inpatient beds occupied by COVID-19 patients (7-day average) at or above 10.0% or 10.0 or more admissions per 100,000 population (7-day total); or fewer than 200 cases per 100,000 population with either a percentage of staffed inpatient beds occupied by COVID-19 patients (7-day average) at or above 15.0% or 20.0 or more admissions per 100,000 population (7-day total).
 - **Medium:** Those counties that during the last week reported 200 or more cases per 100,000 population with a percentage of staffed inpatient beds occupied by COVID-19 patients (7-day average) below 10.0% and fewer than 10.0 admissions per 100,000 population (7-day total); or fewer than 200 cases per 100,000 population with a percentage of staffed inpatient beds occupied by COVID-19 patients (7-day average) between 10.0% and 14.9% and between 10.0 and 19.9 admissions per 100,000 population (7-day total).
 - **Low:** Those counties that during the last week reported fewer than 200 cases per 100,000 population with a percentage of staffed inpatient beds occupied by COVID-19 patients (7-day average) below 10.0% and fewer than 10.0 admissions per 100,000 population.
 - **N/A:** A county is N/A if hospital data is not available.
 - If the indicators suggest different levels, the higher level is selected. Previous week levels are computed based on current data. See [CDC Community Levels](#).
- **Shortages:** Unified Hospitals Dataset in HHS Protect. These data exclude psychiatric, rehabilitation, and religious non-medical hospitals. Low supply is defined as a hospital reporting they are not able to maintain a 3-day supply of N95s, face masks, gloves, gowns, or eye protection. Data are recent as of 11:28 EDT on 04/08/2022.
- **Vaccinations:** [CDC COVID Data Tracker](#). Data includes the Moderna, Pfizer BioNTech, and J&J/Janssen COVID-19 vaccines and reflects current data available as of 11:49 EDT on 04/08/2022. Data last updated 06:00 EDT on 04/08/2022. Persons who are fully vaccinated include those who have received both doses of the Moderna or Pfizer-BioNTech vaccine as well as those who have received one dose of the J&J/Janssen vaccine. COVID-19 vaccines available in the U.S. are authorized only for persons ≥5 years of age (Pfizer-BioNTech) or ≥18 years of age (Moderna and J&J/Janssen). Population denominators reflect the subset of the population of the corresponding age range when specified (e.g., 12+, 12-17, 18+, or 65+), otherwise the total population is used. The count of people who received a booster dose includes anyone who is fully vaccinated and has received another dose of COVID-19 vaccine since August 13, 2021. This includes people who received booster doses and people who received additional doses. CDC has capped the percent of population coverage metrics at 95.0%. These metrics could be greater than 95.0% for multiple reasons, including census denominator data not including all individuals that currently reside in the county (e.g., part time residents) or potential data reporting errors. The following states have ≤80% completeness reporting vaccinations by county, which may result in underestimates of vaccination data for counties: VA (79%), VT (74%), and HI (0%).
- **Variants:** Data from [CDC COVID Data Tracker](#). Variant proportions are based on representative CDC sequence data (NS3 + CDC-funded contract sequencing) collected over a 4-week period ending March 12, 2022 for states with at least 300 sequences. Proportions are calculated using empirical (unweighted) data, which are subject to change over time and will be updated as more data become available. Proportions of variants do not represent the total number that may be circulating in the United States and may not match cases reported by states, territories, tribes, and local officials. For states and jurisdictions not listed, CDC has insufficient genomic surveillance data for the specified time period. Data updated by 19:00 ET on 4/5. Data pulled 12:13 EDT on 04/08/2022.



DATA SOURCES & METHODS

STATE PROFILE REPORT | 04.08.2022

Color threshold values are rounded before color classification

Metric	Dark Green	Light Green	Yellow	Orange	Light Red	Red	Dark Red	Darkest Red	
New cases per 100,000 population per week	≤ 4	5 – 9	10 – 49	50 – 99	100 – 199	200 – 499	500 – 749	≥ 750	
Percent change in new cases per 100,000 population	≤ -26%	-25% – -11%	-10% – 0%	1% – 10%	11% – 99%	100% – 999%	≥ 1000%		
Diagnostic test result positivity rate	≤ 2.9%	3.0% – 4.9%	5.0% – 7.9%	8.0% – 9.9%	10.0% – 14.9%	15.0% – 19.9%	20.0% – 24.9%	≥ 25.0%	
Change in test positivity	≤ -2.1%	-2.0% – -0.6%	-0.5% – 0.0%	0.1% – 0.5%	0.6% – 2.0%		≥ 2.1%		
Total diagnostic tests resulted per 100,000 population per week	≥ 5000	3000 – 4999	2000 – 2999	1000 – 1999	500 – 999		≤ 499		
Percent change in tests per 100,000 population	≥ 26%	11% – 25%	1% – 10%	-10% – 0%	-25% – -11%		≤ -26%		
COVID-19 deaths per 100,000 population per week	≤ 0.0		0.1 – 0.9	1.0 – 1.9	2.0 – 4.9	5.0 – 9.9	10.0 – 14.9	≥ 15.0	
Percent change in deaths per 100,000 population	≤ -26%	-25% – -11%	-10% – 0%	1% – 10%	11% – 25%		≥ 26%		
Confirmed new COVID-19 hospital admissions per 100,000 population per week	≤ 1.9	2.0 – 4.9	5.0 – 9.9	10.0 – 19.9	20.0 – 29.9		≥ 30.0		
Change in new COVID-19 hospital admissions per 100,000 population per week	≤ -26%	-25% – -11%	-10% – 0%	1% – 10%	11% – 25%		≥ 26%		
Confirmed new COVID-19 hospital admissions per 100,000 population per week	≤ 1.9	2.0 – 4.9	5.0 – 9.9	10.0 – 19.9	20.0 – 29.9		≥ 30.0		
Change in new COVID-19 hospital admissions per 100,000 population per week	≤ -26%	-25% – -11%	-10% – 0%	1% – 10%	11% – 25%		≥ 26%		
Percent of staffed inpatient beds occupied by COVID-19 per week	≤ 3%	4% – 7%	8% – 12%	13% – 15%	16% – 20%		≥ 21%		
Change in percent of staffed inpatient beds occupied by COVID-19	≤ -2%	-1%	0%	1%	2%		≥ 3%		
Percent of hospitals with supply shortages	≤ 9%		10% – 19%	20% – 29%	30% – 39%		≥ 40%		
Change in percent of hospitals with supply shortages	≤ -10%	-9% – -5%	-4% – 0%	1% – 4%	5% – 9%		≥ 10%		
Percent of Population Fully Vaccinated (State Level)	≤ 49.9%		50.0% – 59.9%		60.0% – 69.9%		70.0% – 79.9%		≥ 80.0%