



STATE PROFILE REPORT  
02.25.2022

# MISSOURI

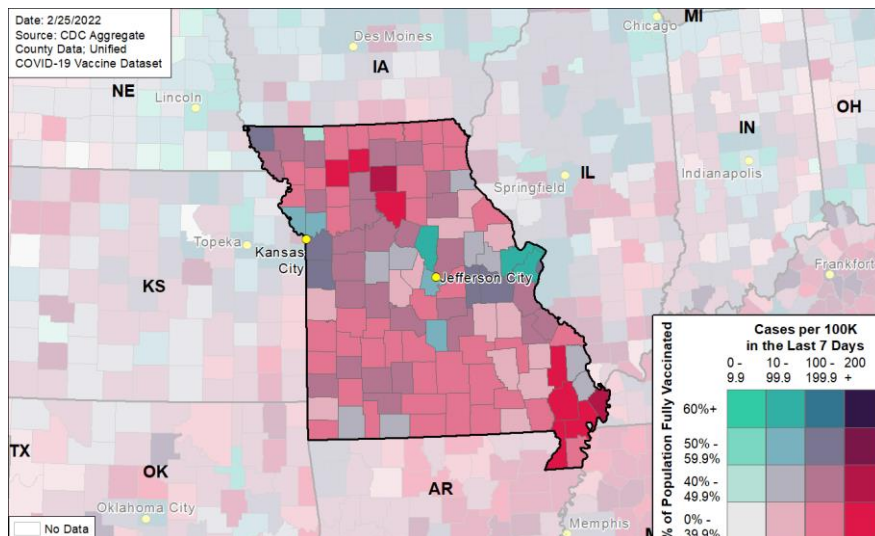
## STATE SYNOPSIS

	LAST WEEK	CHANGE FROM PREVIOUS WEEK
RATE OF NEW COVID-19 CASES PER 100,000	116	-47%
NUCLEIC ACID AMPLIFICATION TEST (NAAT) POSITIVITY RATE	7.6%	-3.7%
NEW CONFIRMED COVID-19 HOSPITAL ADMISSIONS / 100 BEDS	6.4	-28%
RATE OF NEW COVID-19 DEATHS PER 100,000	8.1	+40%
COMMUNITY TRANSMISSION LEVEL	HIGH TRANSMISSION	
PEOPLE RECEIVED AT LEAST 1 DOSE	4,008,414 people	65.3% of total pop.
PEOPLE 5-11 RECEIVED AT LEAST 1 DOSE	128,706 people	24.1% of 5-11 pop.
PEOPLE 12+ RECEIVED AT LEAST 1 DOSE	3,879,342 people	74.1% of 12+ pop.
PEOPLE FULLY VACCINATED	3,379,816 people	55.1% of total pop.
PEOPLE 12+ FULLY VACCINATED	3,284,501 people	62.7% of 12+ pop.
PEOPLE 65+ RECEIVED BOOSTER	566,833 people	64.2% of fully vaccinated 65+ pop.

### SARS-CoV-2 Variants of Concern

- In the 4 weeks ending 1/29/2022, the following proportions of variants of concern were identified in [Missouri](#): Delta (B.1.617.2, AY.\*) 3.1%, Omicron (B.1.1.529, BA.1\*, BA.3) 96.8%, (BA.2) 0.1%

### COVID-19 Reported Cases per 100,000 Population (last 7 days) and Percent of Total Population Fully Vaccinated



Starting 11/1/21, several states shifted to the use of report date; this change may result in fluctuations of weekly values and/or week-on-week changes.

The purpose of this report is to develop a shared understanding of the current status of the pandemic at the national, regional, state, and local levels. We recognize that data at the state level may differ from that available at the federal level. Our objective is to use consistent data sources and methods that allow for comparisons to be made across localities. We appreciate your continued support in identifying data discrepancies and improving data completeness and sharing across systems. We look forward to your feedback. All inquiries and requests for information should be directed to <https://wwwn.cdc.gov/dcs/ContactUs/Form>.



COVID-19



# MISSOURI

STATE PROFILE REPORT | 02.25.2022

	STATE	STATE, % CHANGE FROM PREVIOUS WEEK	FEMA/HHS REGION	UNITED STATES
NEW COVID-19 CASES (RATE PER 100,000)	7,105 (116)	-47%	15,998 (113)	504,778 (152)
NUCLEIC ACID AMPLIFICATION TEST (NAAT) POSITIVITY RATE	7.6%	-3.7%*	7.9%	5.3%
TOTAL NAAT VOLUME (TESTS PER 100,000)	107,203† (1,747†)	-18%†	139,509† (987†)	8,240,136† (2,482†)
NEW COVID-19 DEATHS (RATE PER 100,000)	495 (8.1)	+40%	745 (5.3)	12,044 (3.6)
CONFIRMED NEW COVID-19 HOSPITAL ADMISSIONS (RATE PER 100 BEDS)	945 (6.4)	-28% (-28%)	1,952 (5.7)	40,268 (5.8)
NUMBER OF HOSPITALS WITH SUPPLY SHORTAGES (PERCENT)	7 (6%)	-12%	12 (3%)	277 (5%)
PEOPLE 5-11 INITIATING VACCINATION (PERCENT OF POPULATION)	1,993 (0.4%)	+2.3%	4,149 (0.3%)	151,329 (0.5%)
PEOPLE 12+ INITIATING VACCINATION (PERCENT OF POPULATION)	6,708 (0.1%)	-39.4%	15,099 (0.1%)	425,893 (0.2%)
PEOPLE 12-17 INITIATING VACCINATION (PERCENT OF POPULATION)	784 (0.2%)	-27.6%	1,993 (0.2%)	68,719 (0.3%)
PEOPLE 18+ INITIATING VACCINATION (PERCENT OF POPULATION)	5,924 (0.1%)	-40.7%	13,106 (0.1%)	357,174 (0.1%)
PEOPLE 65+ RECEIVING BOOSTER DOSE	2,927	-41.2%	6,332	191,957

\* Indicates absolute change in percentage points.

† Due to delayed reporting, this figure may underestimate total diagnostic tests and week-on-week changes in diagnostic tests.

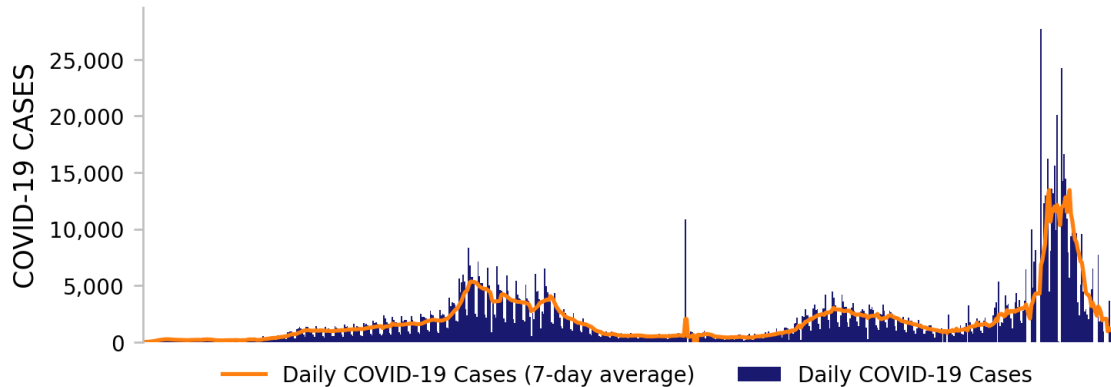
**DATA SOURCES****Note:** Some dates may have incomplete data due to delays in reporting. Data may be backfilled over time, resulting in week-to-week changes.**Cases and Deaths:** State values are aggregated data provided by the states to the CDC. Historical reports of cases and deaths exceeding 1% of the total new cases or deaths reported in the US that day have been excluded. Data are through 2/24/2022; previous week is from 2/11 to 2/17.**Testing:** CELR (COVID-19 Electronic Lab Reporting) state health department-reported data. The term Nucleic Acid Amplification Test (NAAT) includes RT-PCR and other testing methods. Test positivity through 2/22/2022; previous week is from 2/9 to 2/15. Test volume through 2/18/2022; previous week is from 2/5 to 2/11.**Admissions:** Unified Hospitals Dataset in HHS Protect. Data are through 2/23, previous week is from 2/10 to 2/16.**Shortages:** Unified Hospitals Dataset in HHS Protect. Values presented show the latest reports from hospitals in the week ending 2/23/2022 for supplies.**Vaccinations:** [CDC COVID Data Tracker](#). Data include the Moderna, Pfizer BioNTech, and J&J/Janssen COVID-19 vaccines and reflects current data available as of 14:24 EST on 02/25/2022. Data last updated 06:00 EST on 02/25/2022. People initiating vaccination include those who have received the first dose of the Moderna or Pfizer-BioNTech vaccine as well as those who have received one dose of the J&J/Janssen vaccine. Population denominators reflect the subset of the population of the corresponding age range.**METHODS:** Details available on last two pages of report.



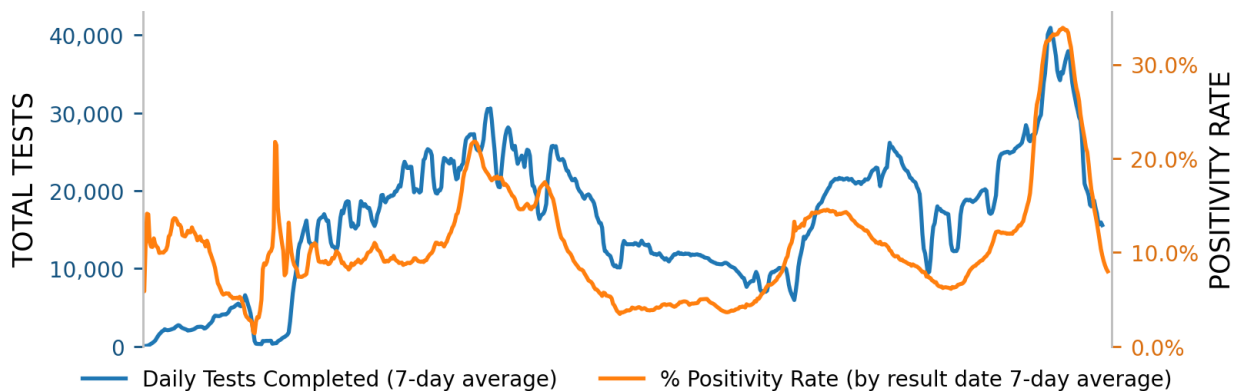
# MISSOURI

STATE PROFILE REPORT | 02.25.2022

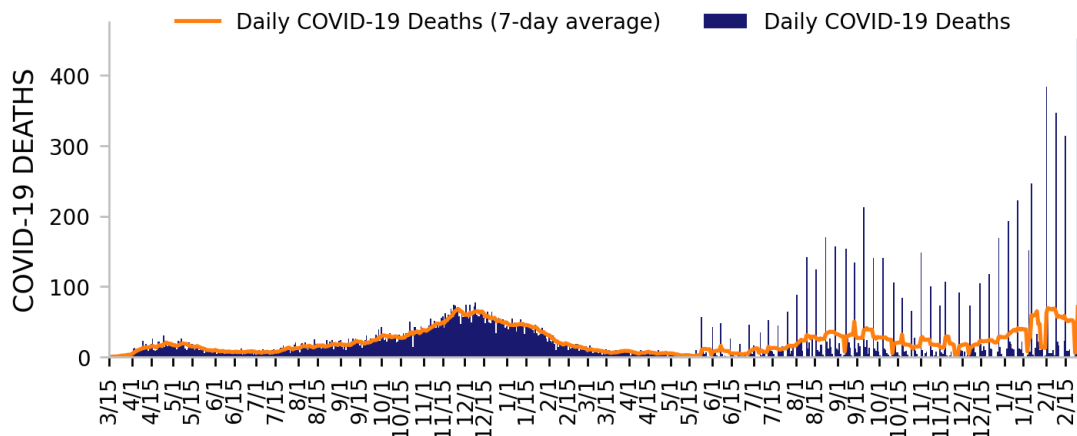
## NEW CASES



## TESTING



## NEW DEATHS



### DATA SOURCES

**Note:** Some dates may have incomplete data due to delays in reporting. Data may be backfilled over time, resulting in week-to-week changes. All three trends share the same horizontal axis shown on the bottom figure.

**Cases and Deaths:** State values are aggregated data provided by the states to the CDC. Historical cases and deaths exceeding 1% of the total new cases or deaths reported in the US that day have been excluded. Data are through 2/24/2022.

**Testing:** CELR (COVID-19 Electronic Lab Reporting) state health department-reported data. Test positivity through 2/22/2022. Test volume through 2/18/2022.

**METHODS:** Details available on last two pages of report.



# MISSOURI

STATE PROFILE REPORT | 02.25.2022

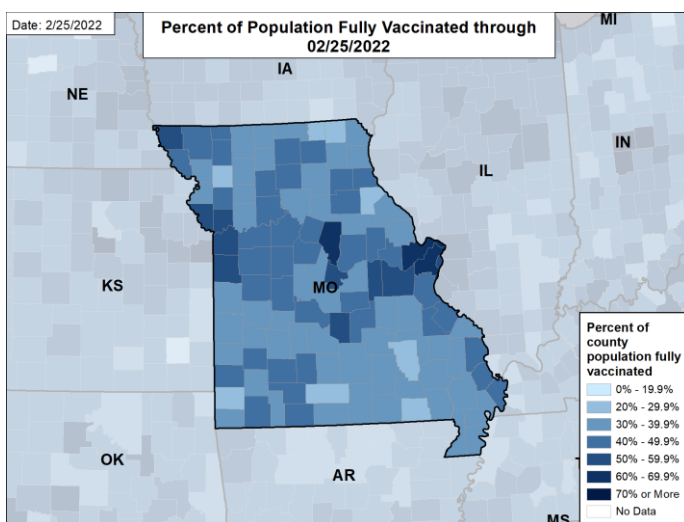
## STATE VACCINATION SUMMARY

**DOSES DELIVERED** 11,055,705  
180,136 per 100k

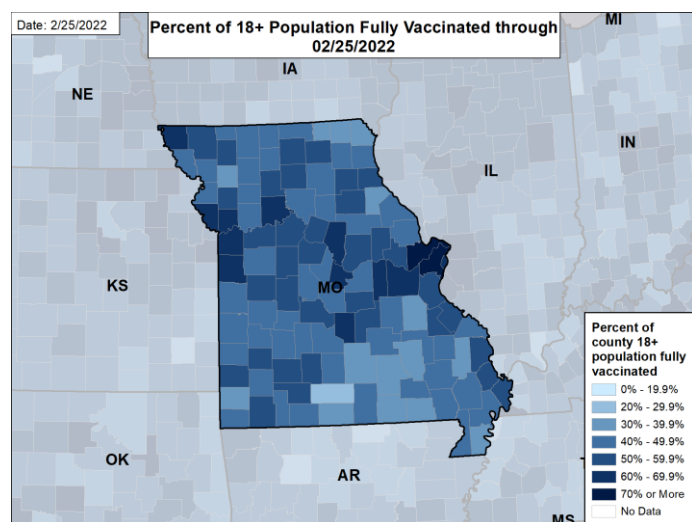
**DOSES ADMINISTERED** 8,645,665  
140,868 per 100k

	RECEIVED AT LEAST ONE DOSE	FULLY VACCINATED	RECEIVED BOOSTER DOSE
<b>ALL PEOPLE</b>	4,008,414 65.3% of total population	3,379,816 55.1% of total population	1,377,399 40.8% of fully vaccinated total pop
<b>PEOPLE 5-11</b>	128,706 24.1% of 5-11 population	95,272 17.9% of 5-11 population	N/A
<b>PEOPLE 12-17</b>	239,010 51.0% of 12-17 population	202,367 43.2% of 12-17 population	35,231 17.4% of fully vaccinated 12-17 pop
<b>PEOPLE 18+</b>	3,640,332 76.4% of 18+ population	3,082,134 64.7% of 18+ population	1,342,018 43.5% of fully vaccinated 18+ pop
<b>PEOPLE 65+</b>	1,011,746 95.0% of 65+ population	883,336 83.2% of 65+ population	566,833 64.2% of fully vaccinated 65+ pop

### PERCENT OF POPULATION FULLY VACCINATED



### PERCENT OF 18+ POPULATION FULLY VACCINATED



### DATA SOURCES

County reporting completeness for Missouri is 91.3%.

**Vaccinations:** [CDC COVID Data Tracker](#). Data includes the Moderna, Pfizer BioNTech, and J&J/Janssen COVID-19 vaccines and reflects current data available as of 14:24 EST on 02/25/2022. Data last updated 06:00 EST on 02/25/2022. Persons who are fully vaccinated include those who have received both doses of the Moderna or Pfizer-BioNTech vaccine as well as those who have received one dose of the J&J/Janssen vaccine.

**METHODS:** Details available on last two pages of report.

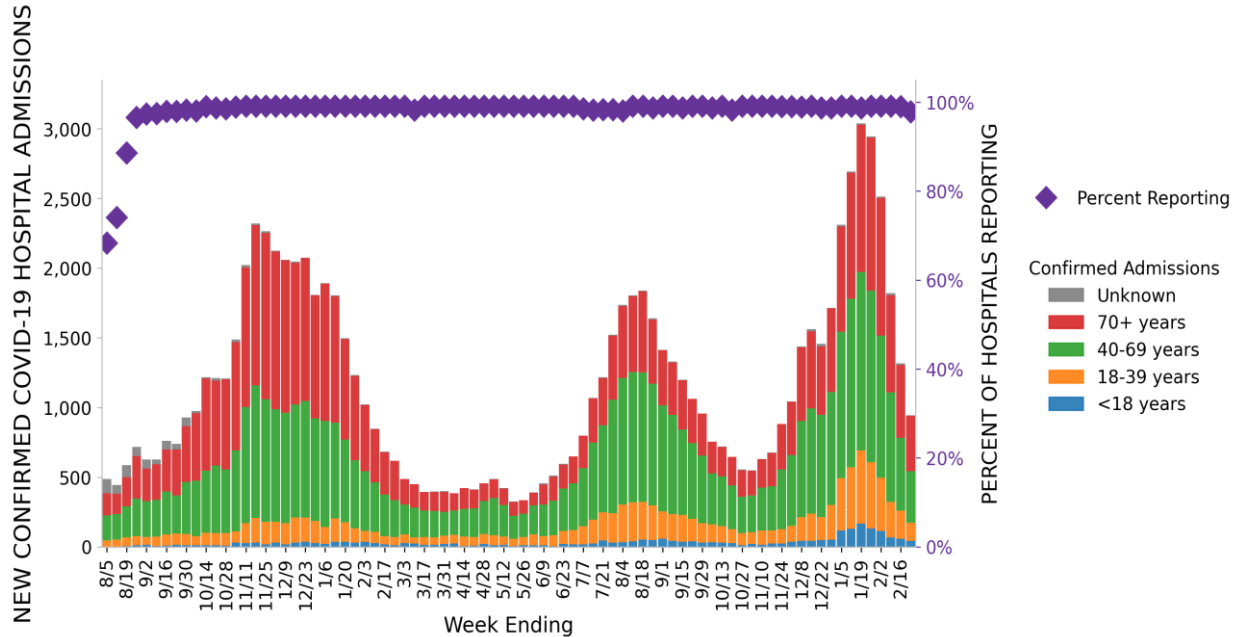


# MISSOURI

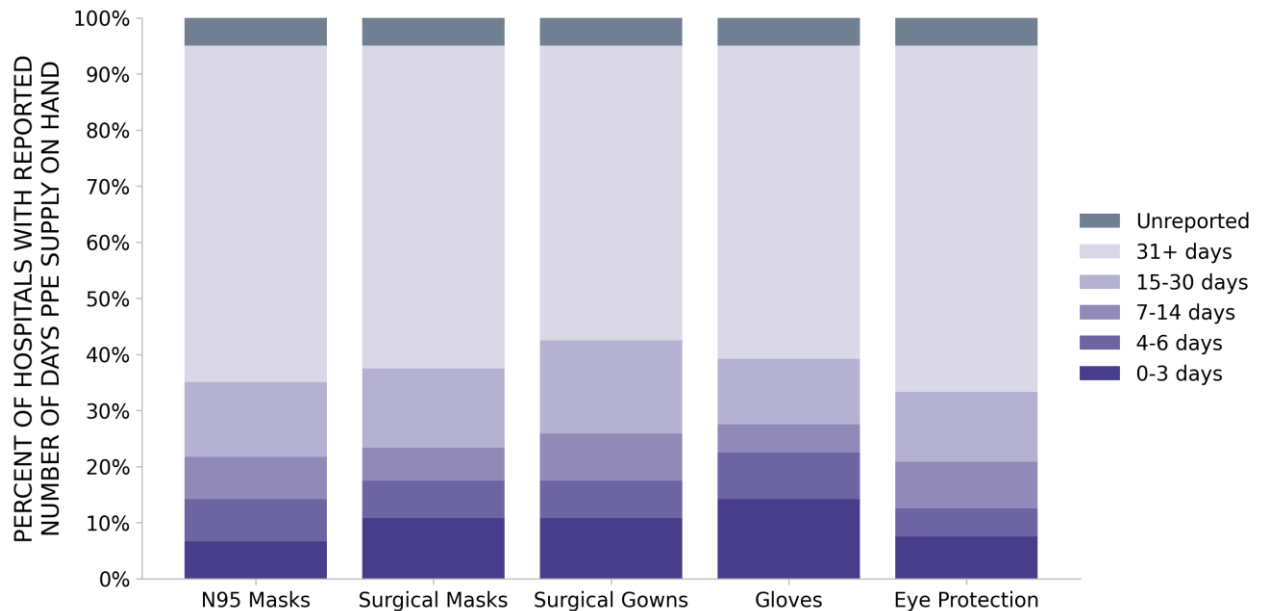
STATE PROFILE REPORT | 02.25.2022

120 hospitals are expected to report in Missouri

## HOSPITAL ADMISSIONS



## HOSPITAL PPE SUPPLIES



### DATA SOURCES

**Hospitalizations:** Unified Hospitals Dataset in HHS Protect. These data exclude psychiatric, rehabilitation, and religious non-medical hospitals. Hospitals explicitly identified by states/regions as those from which we should not expect reports were excluded from the percent reporting figure. Data are through 2/23/2022.

**PPE:** Unified Hospitals Dataset in HHS Protect. These data exclude psychiatric, rehabilitation, and religious non-medical hospitals. Values presented show the latest reports from hospitals in the week ending 2/23/2022.

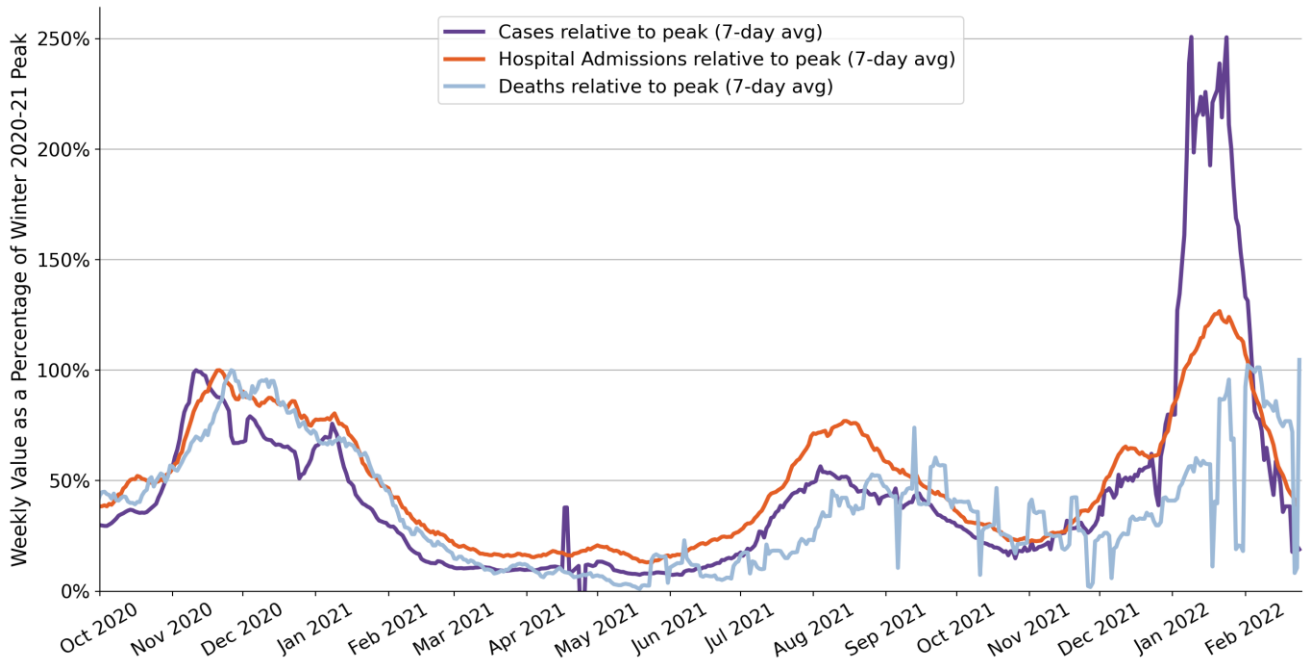
**METHODS:** Details available on last two pages of report.



# MISSOURI

STATE PROFILE REPORT | 02.25.2022

## State Trends Compared to Winter 2020-21 Peak



	Winter Peak	Delta Peak	Delta Peak Pct. of Winter Peak	Last Week	Last Week Pct. of Winter Peak
<b>Cases (7-day daily avg)</b>	5,367 11/11/2020	3,032 8/4/2021	56%	1,015	19%
<b>Hospital Admissions (7-day daily avg)</b>	345 11/21/2020	266 8/15/2021	77%	135	39%
<b>Deaths (7-day daily avg)</b>	68 11/26/2020	50 9/13/2021	74%	71	104%

Winter 2020-21 peak date range is Nov 1, 2020 to Feb 28, 2021; Delta peak date range is Aug 1, 2021 to Oct 31, 2021

### DATA SOURCES

**Note:** Some dates may have incomplete data due to delays in reporting. Data may be backfilled over time, resulting in week-to-week changes. The peak value and associated date is calculated independently for cases, deaths, and hospital admissions, as the highest 7-day average value between the specific start and end dates for each peak.

**Cases and Deaths:** State values are aggregated data provided by the states to the CDC. Historical cases and deaths exceeding 1% of the total new cases or deaths reported in the US that day have been excluded. Data are through 2/24/2022.

**Hospitalizations:** Unified Hospitals Dataset in HHS Protect. These data exclude psychiatric, rehabilitation, and religious non-medical hospitals. Data are through 2/23/2022.

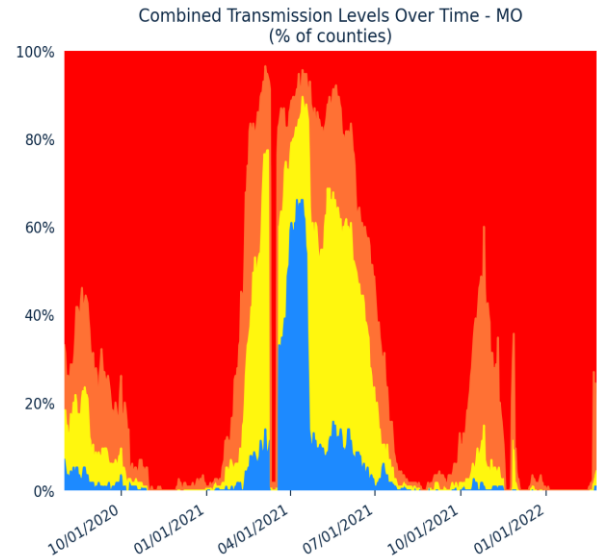
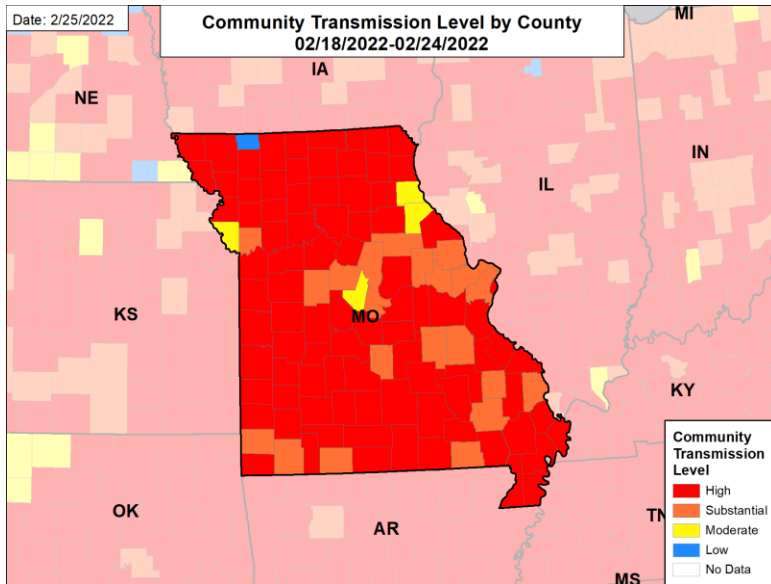
**METHODS:** Details available on last two pages of report.



# MISSOURI

STATE PROFILE REPORT | 02.25.2022

## COMMUNITY TRANSMISSION BY COUNTY AND METRO AREA



## COUNTIES AND METRO AREAS BY COMBINED TRANSMISSION LEVEL

CATEGORY	LOW TRANSMISSION BLUE	MODERATE TRANSMISSION YELLOW	SUBSTANTIAL TRANSMISSION ORANGE	HIGH TRANSMISSION RED
# OF COUNTIES (CHANGE)	1 (↑1)	4 (↑4)	21 (↑20)	89 (↓25)
# OF METRO AREAS (CHANGE)	0 (0)	1 (↑1)	6 (↑6)	20 (↓7)

**All Blue Counties:** Worth

**All Yellow Counties:** Platte, Marion, Moniteau, Ralls

**All Yellow CBSAs:** Hannibal

**All Orange Counties:** St. Louis, St. Charles, Boone, Clay, Cole, Lincoln, Taney, Cape Girardeau, Newton, Pettis, Pulaski, Barry, Warren, Audrain, Crawford, Washington, Cooper, Wayne, Ripley, Montgomery, Madison

**All Orange CBSAs:** Columbia, Cape Girardeau, Branson, Sedalia, Fort Leonard Wood, Mexico

**All Red Counties:** Jackson, Greene, St. Louis City, Jefferson, Linn, Jasper, Cass, Christian, Dunklin, Buchanan, St. Francois, Franklin, Stoddard, Butler, Johnson, Phelps, Howell, Callaway, Webster, Lawrence, Camden, Mississippi, Daviess, Laclede, Adair, Henry, Randolph, Polk, Lafayette, Stone, Clinton, New Madrid, Pike, Bollinger, Texas, Nodaway, Dent, Osage, Miller, Perry, Grundy, Livingston, Benton, McDonald, Gasconade, Saline, Ray, Dallas, Scott, Vernon, Pemiscot, Chariton, Macon, Douglas, Cedar, Ste. Genevieve, Andrew, Wright, Morgan, Ozark, Bates, Iron, Caldwell, DeKalb, Carroll, Barton, Maries, Lewis, Oregon, Harrison, Hickory, Monroe, St. Clair, Carter, Howard, Shannon, Atchison, Putnam, Schuyler, Dade, Clark, Gentry, Sullivan, Shelby, Knox, Holt, Reynolds, Scotland, Mercer

**All Red CBSAs:** St. Louis, Kansas City, Springfield, Joplin, Jefferson City, St. Joseph, Quincy, Kennett, Farmington, Poplar Bluff, Warrensburg, Rolla, Fort Madison-Keokuk, West Plains, Kirksville, Lebanon, Moberly, Maryville, Marshall, Sikeston

### DATA SOURCES

Maps and figures reflect 7-day average of data from 2/18-2/24 (cases), 2/16-2/22 (tests). Metro areas and counties are listed in order of the total number of cases in the last week from largest to smallest.

**Note:** Most recent days may have incomplete reporting.

**Cases:** County-level data are from a CDC managed aggregate county dataset compiled from state and local health departments; therefore, the values may not match those reported directly by the state. Data are through 2/24/2022.

**Testing:** CELR (COVID-19 Electronic Lab Reporting) state health department-reported data. Data are through 2/22/2022.

**Combined Transmission Level:** If the two indicators suggest different transmission levels, the higher level is selected. Previous week transmission levels are computed based on current data. See [CDC COVID Data Tracker](#).

**METHODS:** Details available on last two pages of report.

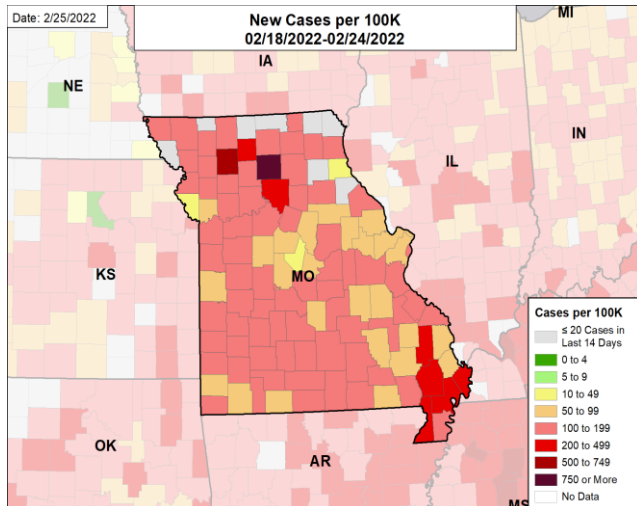


# MISSOURI

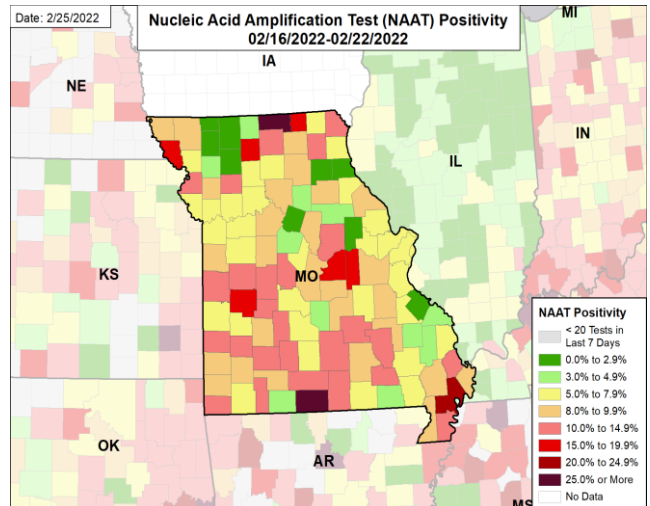
STATE PROFILE REPORT | 02.25.2022

## CASE RATES, NAAT POSITIVITY, HOSPITAL ADMISSIONS, AND DEATH RATES

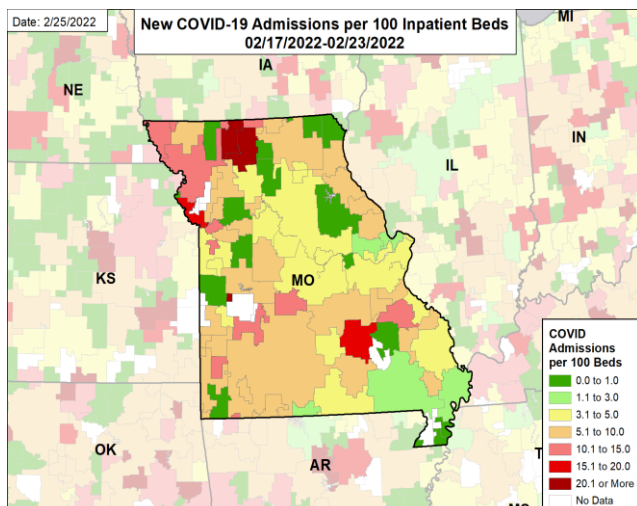
### NEW CASES PER 100,000



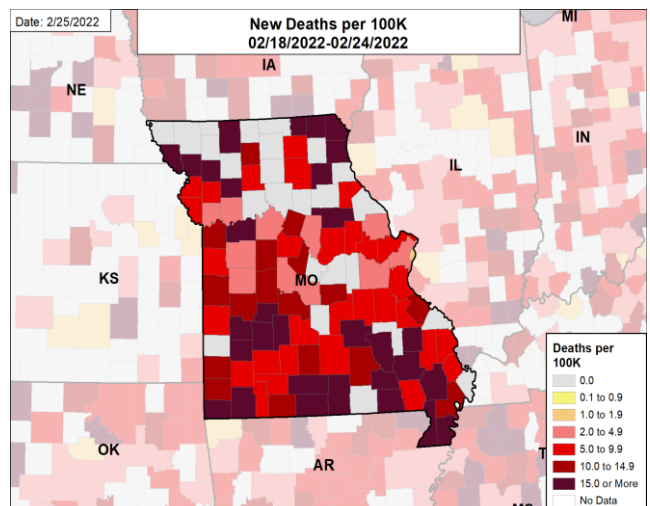
### NUCLEIC ACID AMPLIFICATION TEST (NAAT) POSITIVITY



### CONFIRMED NEW COVID-19 ADMISSIONS PER 100 INPATIENT BEDS



### NEW DEATHS PER 100,000



#### DATA SOURCES

**Note:** Some data may have incomplete data due to delays in reporting. Data may be backfilled over time, resulting in week-to-week changes.

**Cases and Deaths:** County-level data are from a CDC managed aggregate county dataset compiled from state and local health departments; therefore, the values may not match those reported directly by the state. Data are through 2/24/2022.

**Testing:** CELR (COVID-19 Electronic Lab Reporting) state health department-reported data. The term Nucleic Acid Amplification Test (NAAT) includes RT-PCR and other testing methods. Data are through 2/22/2022.

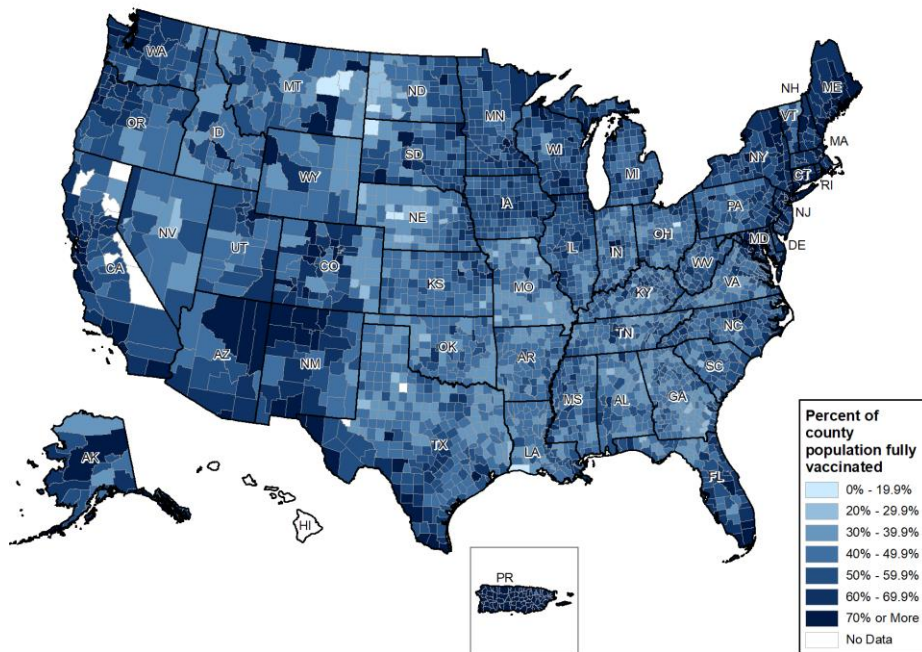
**Hospitalizations:** Unified Hospitals Dataset in HHS Protect. Totals include only confirmed COVID-19 admissions. HSA indicates Hospital Service Area. Hospitals are assigned to HSA based on zip code where known. In some areas, reports are aggregates of multiple facilities that cross HSA boundaries; in these cases, values are assigned based on the zip code for the aggregate. Data are through 2/23/2022.

**METHODS:** Details available on last two pages of report.



# National Picture: Vaccinations

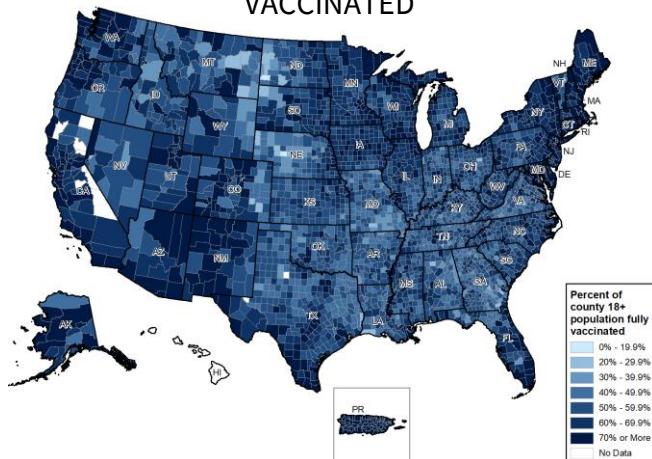
## PERCENT OF POPULATION FULLY VACCINATED



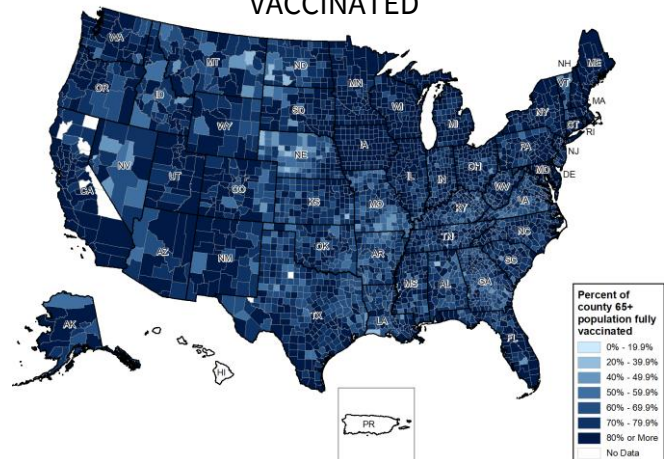
## NATIONAL RANKING OF POPULATION FULLY VACCINATED

National Rank	State	National Rank	State
1	PR	27	IA
2	RI	28	AK
3	VT	29	KS
4	ME	30	AZ
5	CT	31	TX
6	MA	32	SD
7	HI	33	NV
8	NY	34	NC
9	NJ	35	MI
10	MD	36	OH
11	VA	37	WV
12	DC	38	KY
13	WA	39	OK
14	CA	40	MT
15	NM	41	SC
16	CO	42	MO
17	OR	43	ND
18	MN	44	IN
19	NH	45	GA
20	DE	46	TN
21	IL	47	AR
22	PA	48	ID
23	FL	49	LA
24	WI	50	MS
25	UT	51	WY
26	NE	52	AL

## PERCENT OF 18+ POPULATION FULLY VACCINATED



## PERCENT OF 65+ POPULATION FULLY VACCINATED



### DATA SOURCES

**Vaccinations:** [CDC COVID Data Tracker](#). Data includes the Moderna, Pfizer BioNTech, and J&J/Janssen COVID-19 vaccines and reflects current data available as of 14:24 EST on 02/25/2022. Data last updated 06:00 EST on 02/25/2022. Persons who are fully vaccinated include those who have received both doses of the Moderna or Pfizer-BioNTech vaccine as well as those who have received one dose of the J&J/Janssen vaccine. The following states have  $\leq 80\%$  completeness reporting vaccinations by county, which may result in underestimates of vaccination data for counties: VA (79%), VT (74%), and HI (0%).

**METHODS:** Details available on last two pages of report.

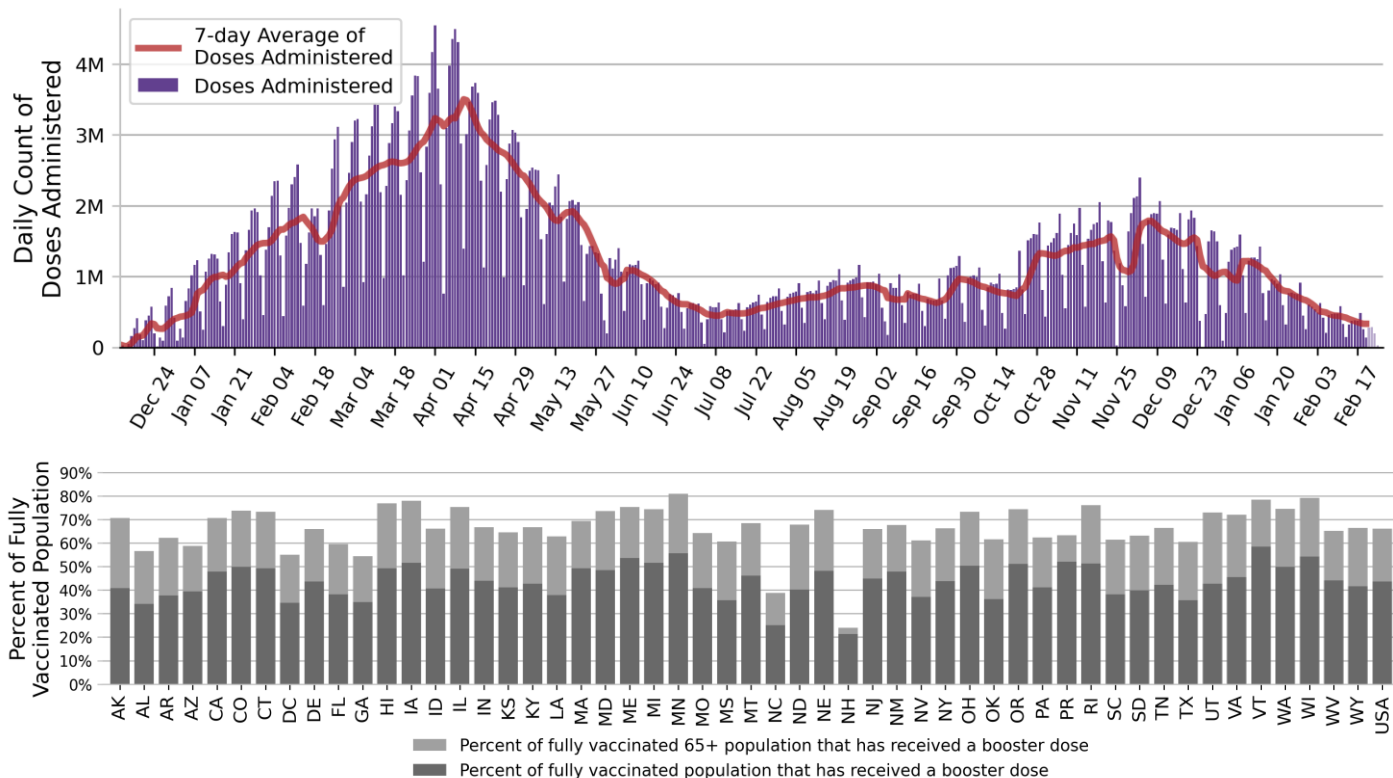


# National Picture: Vaccinations

NATIONAL COVID-19 VACCINE SUMMARY AS OF 2/25

<b>DOSES DELIVERED</b>	689,427,145 207,653 per 100k	<b>DOSES ADMINISTERED</b>	552,025,069 166,268 per 100k
<b>PEOPLE RECEIVED AT LEAST ONE DOSE</b>	253,232,298 76.3% of total pop.	<b>PEOPLE FULLY VACCINATED</b>	215,318,037 64.9% of total pop.
<b>PEOPLE 5-11 RECEIVED AT LEAST ONE DOSE</b>	9,416,687 32.8% of 5-11 pop.	<b>PEOPLE 5-11 FULLY VACCINATED</b>	7,330,315 25.5% of 5-11 pop.
<b>PEOPLE 12-17 RECEIVED AT LEAST ONE DOSE</b>	17,066,162 67.6% of 12-17 pop.	<b>PEOPLE 12-17 FULLY VACCINATED</b>	14,532,325 57.5% of 12-17 pop.
<b>PEOPLE 18+ RECEIVED AT LEAST ONE DOSE</b>	226,677,101 87.8% of 18+ pop.	<b>PEOPLE 18+ FULLY VACCINATED</b>	193,434,447 74.9% of 18+ pop.
<b>PEOPLE 65+ RECEIVED AT LEAST ONE DOSE</b>	56,093,085 95.0% of 65+ pop.	<b>PEOPLE 65+ FULLY VACCINATED</b>	48,613,376 88.7% of 65+ pop.
<b>PEOPLE RECEIVED BOOSTER DOSE</b>	93,811,640 43.6% of fully vaccinated total pop.	<b>PEOPLE 65+ RECEIVED BOOSTER DOSE</b>	32,150,229 66.1% of fully vaccinated 65+ pop.

## DAILY NATIONAL COUNT OF VACCINE DOSES ADMINISTERED BY DATE OF ADMINISTRATION



### DATA SOURCES

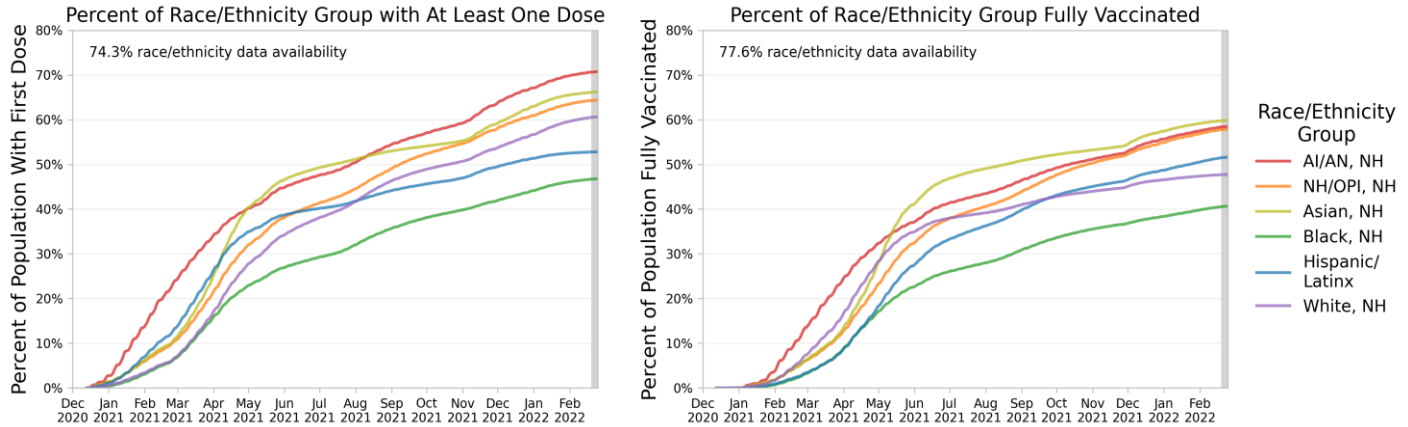
**Vaccinations:** [CDC COVID Data Tracker](#). Data includes the Moderna, Pfizer BioNTech, and J&J/Janssen COVID-19 vaccines and reflects current data available as of 14:24 EST on 02/25/2022. Data last updated 06:00 EST on 02/25/2022. Persons who are fully vaccinated include those who have received both doses of the Moderna or Pfizer-BioNTech vaccine as well as those who have received one dose of the J&J/Janssen vaccine. The count of people who received a booster dose includes anyone who is fully vaccinated and has received another dose of COVID-19 vaccine since August 13, 2021. This includes people who received booster doses and people who received additional doses. Due to delays in reporting, data on doses administered in recent days (as reflected by lighter purple coloring in the Daily National Count figure) may be an underestimate of the actual value.

**METHODS:** Details available on last two pages of report.

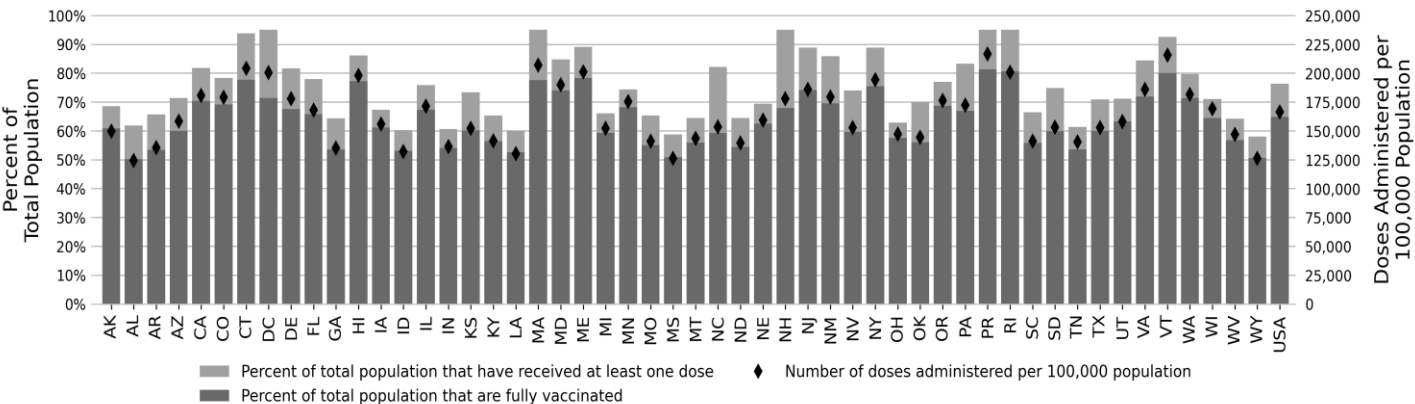
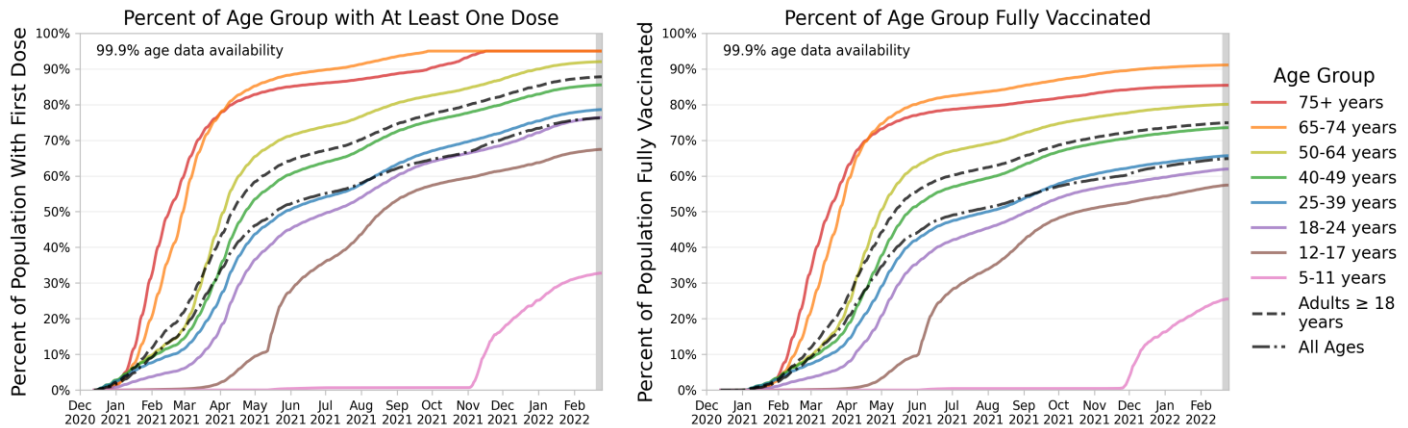


# National Picture: Vaccinations

## NATIONAL SUMMARY OF VACCINATIONS BY RACE/ETHNICITY



## NATIONAL SUMMARY OF VACCINATIONS BY AGE



### DATA SOURCES

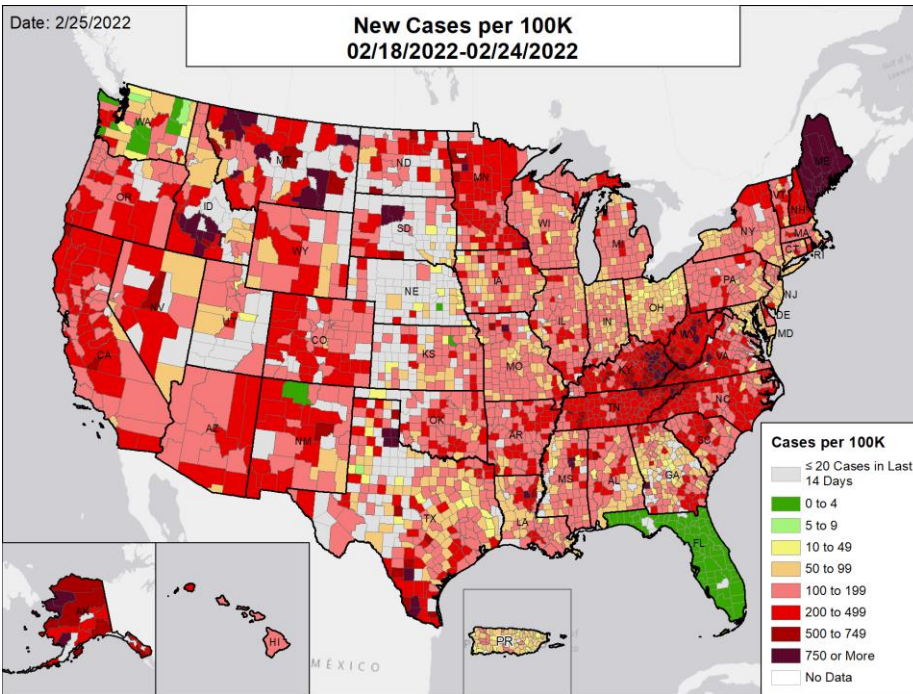
**Vaccinations:** [CDC COVID Data Tracker](#). Data includes the Moderna, Pfizer BioNTech, and J&J/Janssen COVID-19 vaccines and reflects current data available as of 14:24 EST on 02/25/2022. Data last updated 06:00 EST on 02/25/2022. Persons who are fully vaccinated include those who have received both doses of the Moderna or Pfizer-BioNTech vaccine as well as those who have received one dose of the J&J/Janssen vaccine. Race/Ethnicity data were available for 74.3% receiving at least one dose and 77.6% fully vaccinated. Age data were available for 100.0% receiving at least one dose and 100.0% fully vaccinated. Texas does not report demographic-specific dose number information to CDC, so data for Texas are not represented in demographic trends figures. "NH" stands for Non-Hispanic/Latinx, "AI/AN" stands for American Indian or Alaska Native, and "NH/PI" stands for Native Hawaiian or Pacific Islander.

**METHODS:** Details available on last two pages of report.



# National Picture: Cases

## NEW CASES PER 100,000

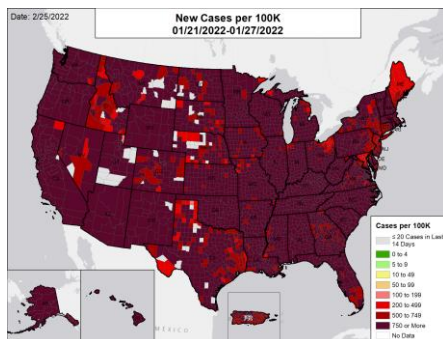


## NATIONAL RANKING OF NEW CASES PER 100,000

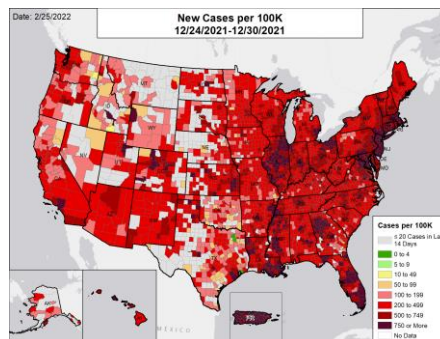
National Rank	State	National Rank	State
1	NE	27	ND
2	PR	28	MS
3	MD	29	RI
4	OH	30	TX
5	NY	31	OK
6	NJ	32	VA
7	DE	33	MN
8	NV	34	WY
9	SD	35	OR
10	IN	36	SC
11	DC	37	CA
12	CT	38	NC
13	IL	39	AZ
14	GA	40	NM
15	MO	41	AR
16	WI	42	VT
17	FL	43	CO
18	PA	44	TN
19	KS	45	WA
20	LA	46	NH
21	MI	47	KY
22	AL	48	WV
23	HI	49	AK
24	MA	50	MT
25	UT	51	ID
26	IA	52	ME

## NEW CASES PER 100,000 IN THE WEEK:

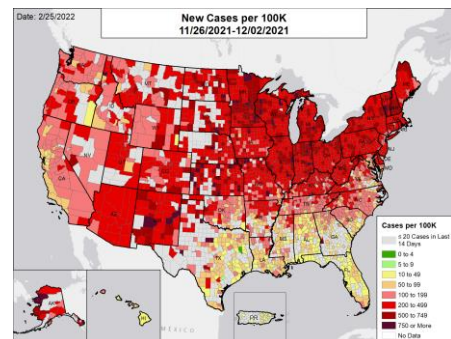
### ONE MONTH BEFORE



### TWO MONTHS BEFORE



### THREE MONTHS BEFORE



## DATA SOURCES

**Note:** Some dates may have incomplete data due to delays in reporting. Data may be backfilled over time, resulting in week-to-week changes.

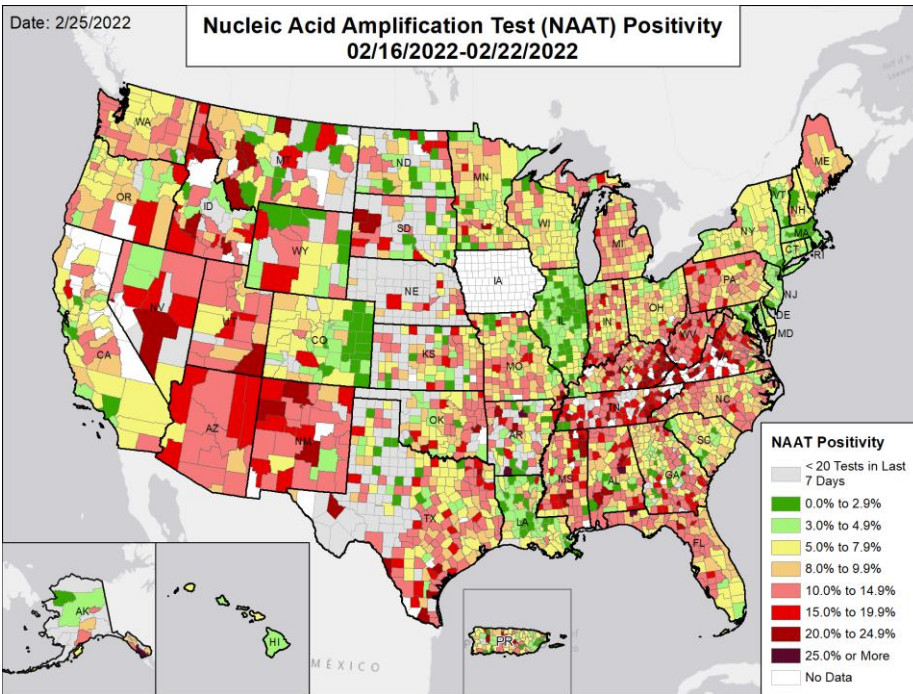
**Cases:** County-level data are from a CDC managed aggregate county dataset compiled from state and local health departments; therefore, the values may not match those reported directly by the state. State values are aggregated data provided by the states to the CDC. The week one month before is from 1/21 to 1/27; the week two months before is from 12/24 to 12/30; the week three months before is from 11/26 to 12/2. Due to data delays, Florida county-level cases data has not been reported in the last week. Maine has been processing a backlog of positive test results, causing increases in reported cases since 2/15/22. Due to data delays, Washington state cases data for the last week are incomplete.

**METHODS:** Details available on last two pages of report.



# National Picture: NAAT Positivity

## NUCLEIC ACID AMPLIFICATION TEST (NAAT) POSITIVITY

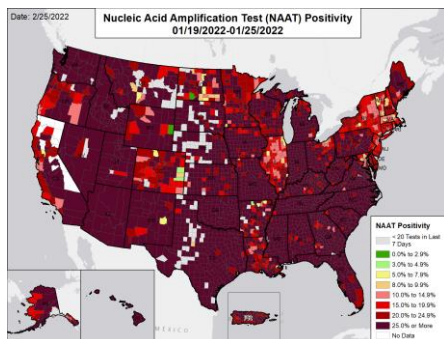


## NATIONAL RANKING OF NAAT POSITIVITY

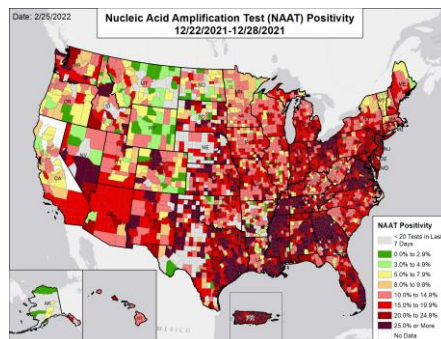
National Rank	State	National Rank	State
1	DC	27	MO
2	MA	28	ND
3	IL	29	TX
4	MD	30	PA
5	NY	31	IN
6	NJ	32	KS
7	RI	33	NC
8	CA	34	NV
9	LA	35	SD
10	HI	36	WY
11	CT	37	MT
12	VT	38	OK
13	CO	39	AR
14	DE	40	AK
15	OH	41	NE
16	ME	42	TN
17	NH	43	AL
18	MN	44	VA
19	GA	45	AZ
20	WI	46	UT
21	SC	47	KY
22	PR	48	ID
23	FL	49	MS
24	OR	50	WV
25	MI	51	NM
26	WA	--	IA

## NUCLEIC ACID AMPLIFICATION TEST (NAAT) POSITIVITY IN THE WEEK:

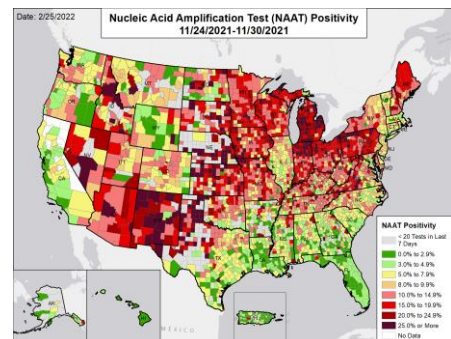
### ONE MONTH BEFORE



### TWO MONTHS BEFORE



### THREE MONTHS BEFORE



## DATA SOURCES

**Note:** Some dates may have incomplete data due to delays in reporting. Data may be backfilled over time, resulting in week-to-week changes.

**Testing:** CELR (COVID-19 Electronic Lab Reporting) state health department-reported data. The term Nucleic Acid Amplification Test (NAAT) includes RT-PCR and other testing methods. Data are through 2/22/2022. The week one month before is from 1/19 to 1/25; the week two months before is from 12/22 to 12/28; the week three months before is from 11/24 to 11/30. As of February 17, 2022, Iowa is no longer reporting negative test results; therefore, test volume and test positivity from this date forward is no longer presented. As of 8/31/2021, Washington has been experiencing technical issues. As a result, test positivity and test volume may be incomplete. Due to technical issues and data delays, Tennessee's and Wyoming's test positivity and test volume for the last week may be incomplete.

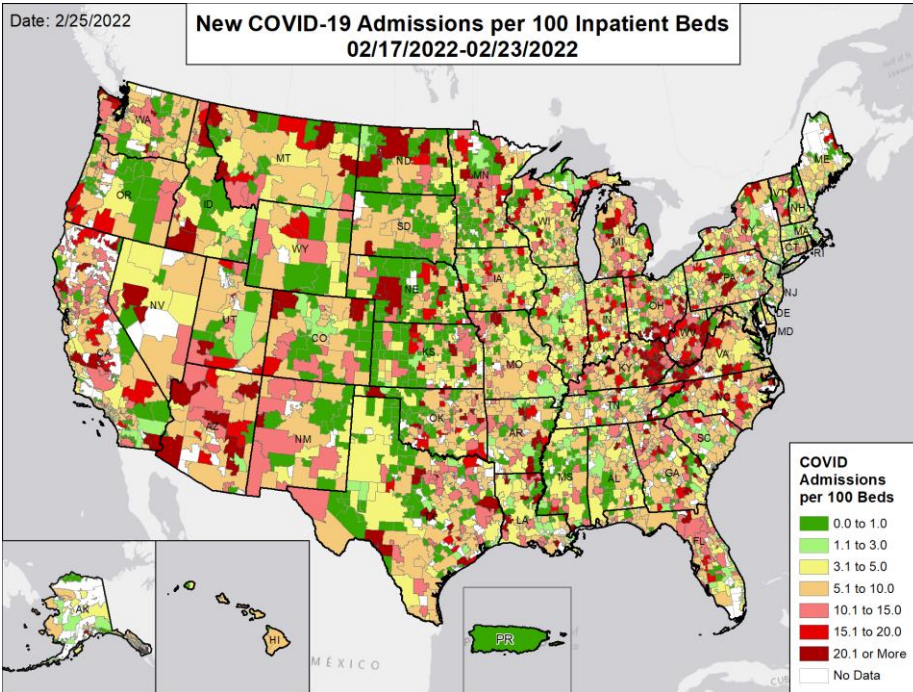
**METHODS:** Details available on last two pages of report.



# National Picture: Hospital Admissions

## CONFIRMED NEW COVID-19 ADMISSIONS PER 100 INPATIENT BEDS

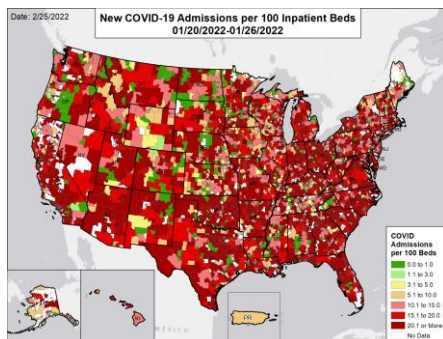
## NATIONAL RANKING OF CONFIRMED ADMISSIONS PER 100 BEDS



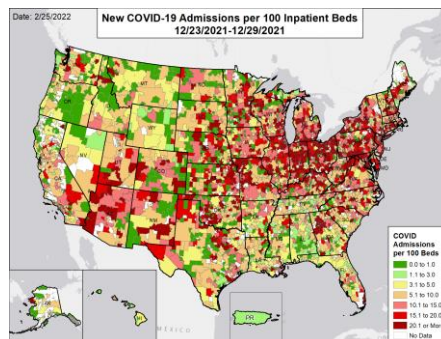
National Rank	State	National Rank	State
1	PR	27	AL
2	DC	28	HI
3	MA	29	NV
4	RI	30	VT
5	NJ	31	TN
6	NY	32	WI
7	MS	33	MI
8	DE	34	ND
9	MD	35	FL
10	IL	36	WA
11	CT	37	MO
12	ME	38	ID
13	NH	39	OR
14	AK	40	SC
15	IA	41	NC
16	CO	42	CA
17	PA	43	NM
18	MN	44	MT
19	OH	45	TX
20	LA	46	UT
21	KS	47	GA
22	NE	48	AR
23	IN	49	OK
24	WY	50	AZ
25	SD	51	KY
26	VA	52	WV

## CONFIRMED NEW COVID-19 ADMISSIONS PER 100 INPATIENT BEDS IN THE WEEK:

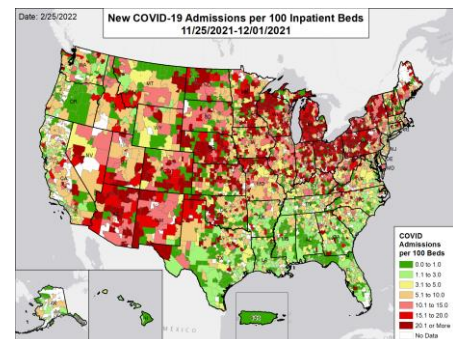
### ONE MONTH BEFORE



### TWO MONTHS BEFORE



### THREE MONTHS BEFORE



## DATA SOURCES

**Note:** Some dates may have incomplete data due to delays in reporting. Data may be backfilled over time, resulting in week-to-week changes.

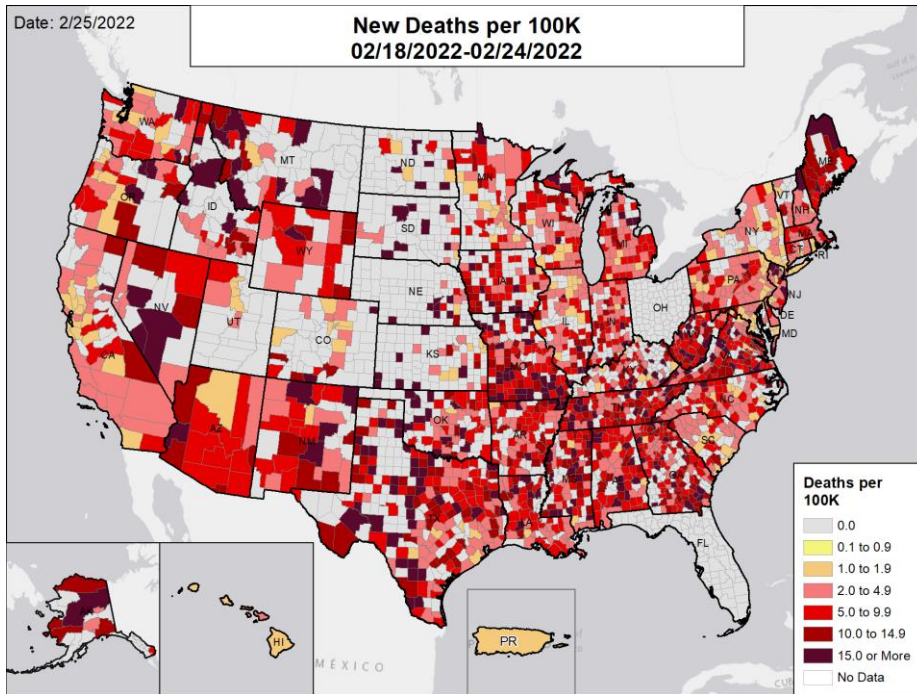
**Admissions:** Unified Hospitals Dataset in HHS Protect through 2/23/2022. Totals include only confirmed COVID-19 admissions. Puerto Rico is shown at the territory level as HSAs are not defined. The week one month before is from 1/20 to 1/26; the week two months before is from 12/23 to 12/29; the week three months before is from 11/25 to 12/1. HSA indicates Hospital Service Area. Hospitals are assigned to HSA based on zip code where known. In some areas, reports are aggregates of multiple facilities that cross HSA boundaries; in these cases, values are assigned based on the zip code for the aggregate.

**METHODS:** Details available on last two pages of report.



# National Picture: Deaths

## NEW DEATHS PER 100,000

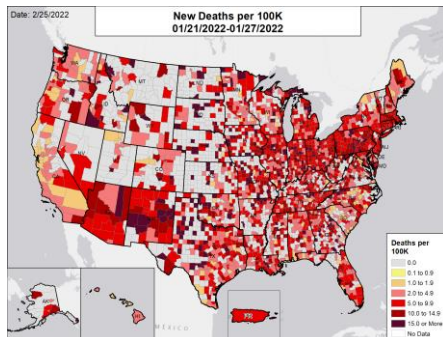


## NATIONAL RANKING OF NEW DEATHS PER 100,000

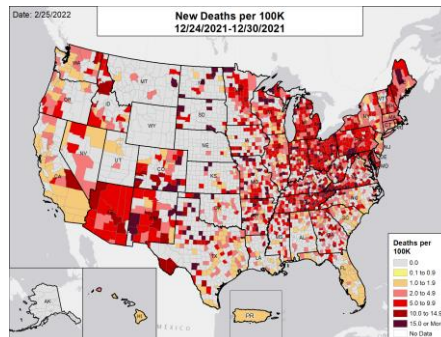
National Rank	State	National Rank	State
1	FL	27	CT
2	DC	28	NE
3	RI	29	KY
4	PR	30	ID
5	KS	31	NV
6	ND	32	MA
7	HI	33	IA
8	CO	34	TX
9	UT	35	IN
10	MD	36	AR
11	NC	37	LA
12	AL	38	DE
13	NY	39	WY
14	VT	40	MI
15	SC	41	GA
16	NJ	42	OK
17	SD	43	MT
18	MN	44	NM
19	WA	45	VA
20	AK	46	MS
21	PA	47	AZ
22	CA	48	TN
23	WI	49	OH
24	OR	50	WV
25	IL	51	MO
26	NH	52	ME

## NEW DEATHS PER 100,000 IN THE WEEK:

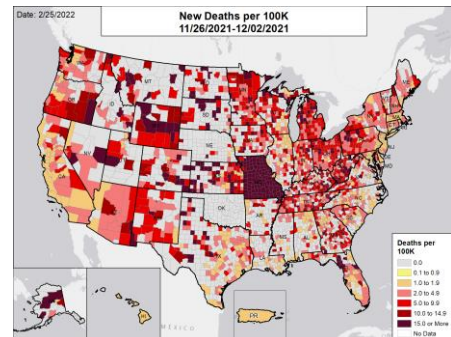
### ONE MONTH BEFORE



### TWO MONTHS BEFORE



### THREE MONTHS BEFORE



## DATA SOURCES

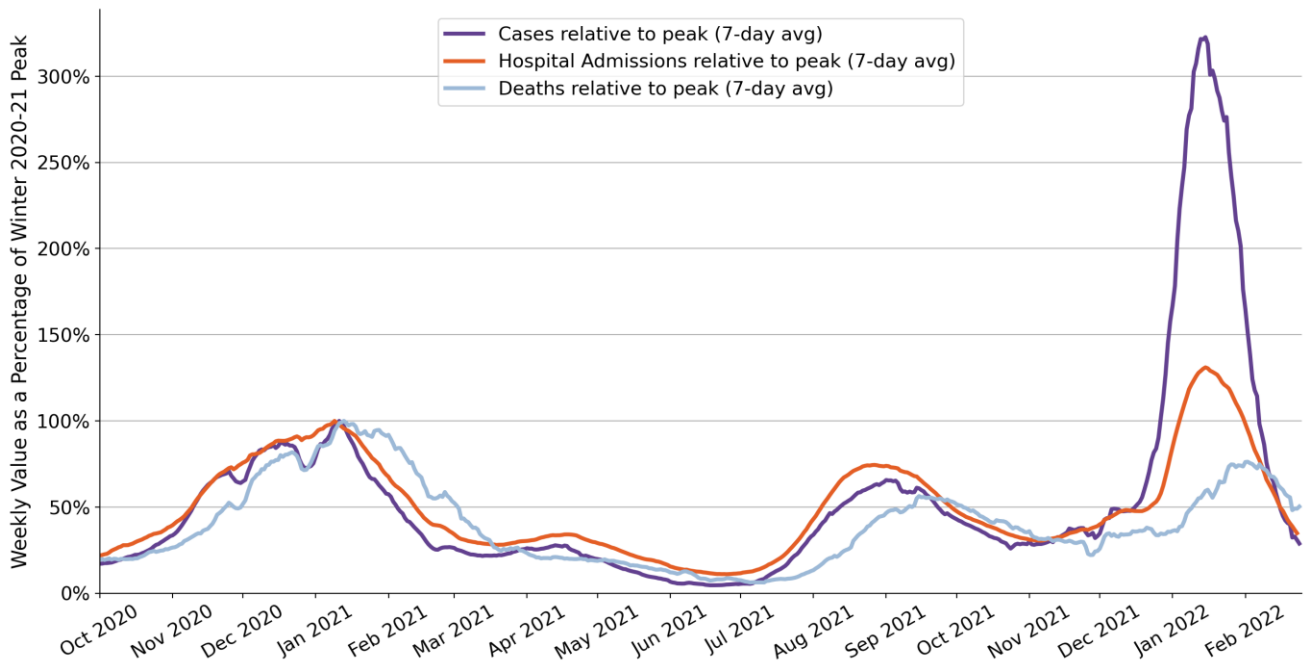
**Note:** Some dates may have incomplete data due to delays in reporting. Data may be backfilled over time, resulting in week-to-week changes.

**Deaths:** County-level data are from a CDC managed aggregate county dataset compiled from state and local health departments; therefore, the values may not match those reported directly by the state. State values are aggregated data provided by the states to the CDC. As of 3/2/2021, Ohio changed their method of reporting COVID-19 deaths and will report deaths on the day of death, not the day of report, which could result in a fluctuation in the number of deaths from recent weeks due to delayed reporting. Puerto Rico is shown at the territory level as deaths are not reported at the municipio level. The week one month before is from 1/21 to 1/27; the week two months before is from 12/24 to 12/30; the week three months before is from 11/26 to 12/2. Due to data delays, Florida county-level deaths data has not been reported in the last week. Due to data delays, Washington state deaths data for the last week are incomplete.

**METHODS:** Details available on last two pages of report.



# National Picture: Trends Compared to Winter 2020-21 Peak



	Winter Peak	Delta Peak	Delta Peak Pct. of Winter Peak	Last Week	Last Week Pct. of Winter Peak
<b>Cases (7-day daily avg)</b>	250,256 1/11/2021	164,441 9/1/2021	66%	72,111	29%
<b>Hospital Admissions (7-day daily avg)</b>	16,497 1/9/2021	12,285 8/27/2021	74%	5,753	35%
<b>Deaths (7-day daily avg)</b>	3,420 1/13/2021	1,928 9/15/2021	56%	1,721	50%

Winter 2020-21 peak date range is Nov 1, 2020 to Feb 28, 2021; Delta peak date range is Aug 1, 2021 to Oct 31, 2021

## DATA SOURCES

**Note:** Some dates may have incomplete data due to delays in reporting. Data may be backfilled over time, resulting in week-to-week changes. The peak value and associated date is calculated independently for cases, deaths, and hospital admissions, as the highest 7-day average value between the specific start and end dates for each peak.

**Cases and Deaths:** State values are aggregated data provided by the states to the CDC. Historical cases and deaths exceeding 1% of the total new cases or deaths reported in the US that day have been excluded. Data are through 2/24/2022. Due to data delays, Florida county-level cases data has not been reported in the last week. Maine has been processing a backlog of positive test results, causing increases in reported cases since 2/15/22. Due to data delays, Washington state cases data have not been updated in the last week.

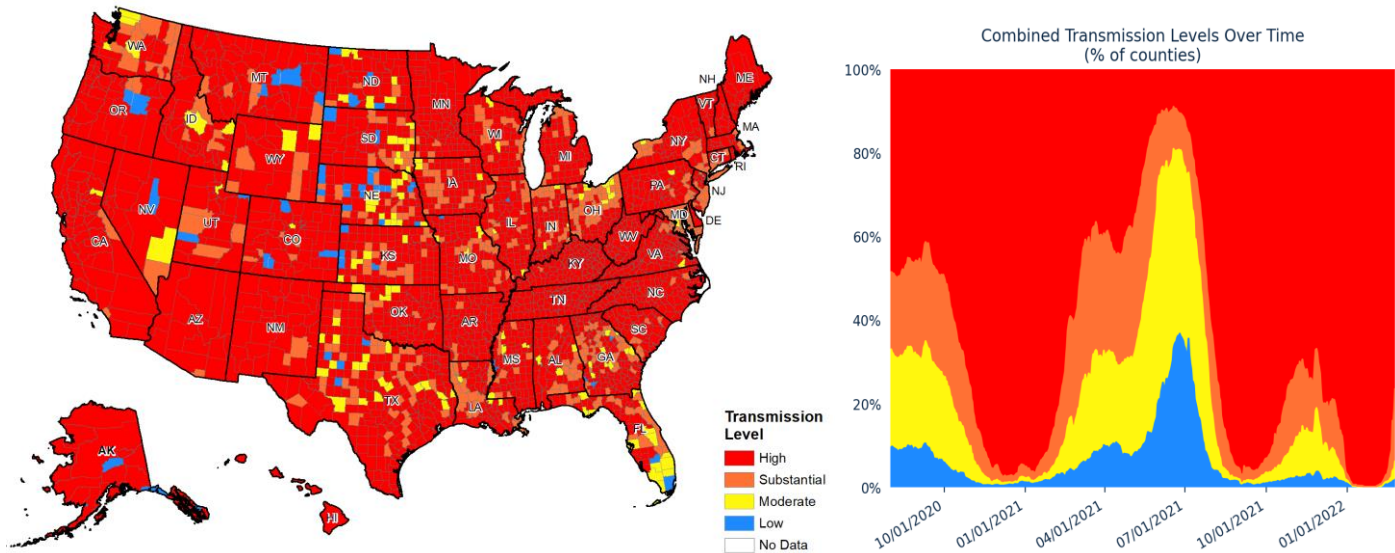
**Hospitalizations:** Unified Hospitals Dataset in HHS Protect. These data exclude psychiatric, rehabilitation, and religious non-medical hospitals. Data are through 2/23/2022.

**METHODS:** Details available on last two pages of report.



# National Picture: Community Transmission

## COMMUNITY TRANSMISSION BY COUNTY



## COUNTIES BY COMMUNITY TRANSMISSION INDICATOR

CASES PER 100K	0 TO 9	10 TO 49	50 TO 99	100 +
# OF COUNTIES (CHANGE)	156 (↑99)	174 (↑136)	665 (↑480)	2225 (↓715)
% OF COUNTIES (CHANGE)	4.8% (↑3.1%)	5.4% (↑4.2%)	20.7% (↑14.9%)	69.1% (↓22.2%)
TEST POSITIVITY	0.0% TO 4.9%	5.0 TO 7.9%	8.0% TO 9.9%	10.0% +
# OF COUNTIES (CHANGE)	838 (↑492)	703 (↑316)	451 (↑96)	1228 (↓904)
% OF COUNTIES (CHANGE)	26.0% (↑15.3%)	21.8% (↑9.8%)	14.0% (↑3.0%)	38.1% (↓28.1%)

## COUNTIES BY COMBINED TRANSMISSION LEVEL

CATEGORY	LOW TRANSMISSION BLUE	MODERATE TRANSMISSION YELLOW	SUBSTANTIAL TRANSMISSION ORANGE	HIGH TRANSMISSION RED
# OF COUNTIES (CHANGE)	57 (↑28)	141 (↑126)	557 (↑444)	2465 (↓598)
% OF COUNTIES (CHANGE)	1.8% (↑0.9%)	4.4% (↑3.9%)	17.3% (↑13.8%)	76.6% (↓18.6%)

### DATA SOURCES

Maps and figures reflect 7-day average of data from 2/18-2/24 (cases), 2/16-2/22 (tests).

**Note:** Most recent days may have incomplete reporting.

**Cases:** County-level data are from a CDC managed aggregate county dataset compiled from state and local health departments; therefore, the values may not match those reported directly by the state. Data are through 2/24/2022. Due to data delays, Florida county-level cases data has not been reported in the last week. Maine has been processing a backlog of positive test results, causing increases in reported cases since 2/15/22. Due to data delays, Washington state cases data have not been updated in the last week.

**Testing:** CELR (COVID-19 Electronic Lab Reporting) state health department-reported data. Data are through 2/22/2022. As of February 17, 2022, Iowa is no longer reporting negative test results; therefore, test positivity from this date forward is no longer presented or used in Community Transmission Levels. As of 8/31/2021, Washington has been experiencing technical issues. As a result, test positivity and test volume may be incomplete. Due to technical issues and data delays, Tennessee's and Wyoming's test positivity and test volume for the last week may be incomplete.

**County Percentages:** Based on a denominator of 3,220 county/county-equivalents, including states, the District of Columbia, and Puerto Rico municipalities.

**Combined Transmission Level:** If the two indicators suggest different transmission levels, the higher level is selected. Previous week transmission levels are computed based on current data. See [CDC COVID Data Tracker](#).

**METHODS:** Details available on last two pages of report.



# DATA SOURCES & METHODS

STATE PROFILE REPORT | 02.25.2022

- Some dates may have incomplete data due to delays and/or differences in state reporting. Data may be backfilled over time, resulting in week-to-week changes between reports. It is critical that states provide as up-to-date data as possible. Figures and values may also differ from state reports due to differing methodologies. For more information, see [CDC COVID Data Tracker](#).
- All population values are vintage 2019 US Census data.
- Cases and Deaths:** County-level data are from a CDC-managed aggregate county dataset compiled from state and local health departments; therefore, the values may not match those reported directly by the state. State values are aggregated data provided by the states to the CDC. Data and week-on-week changes are as of 12:08 EST on 02/25/2022. Cases and deaths are generally shown by date of report. Some states periodically adjust their past data with CDC to show it by case date and death date, as determined by the state. Between adjustments, new cases and deaths continue to be shown by date of report. This can potentially lead to over-estimates of the week-on-week increases in cases or deaths. As of October 25, 2021, CDC no longer spreads aggregate COVID-19 case and death counts evenly over non-reporting days (i.e., smoothing), to avoid under-reporting of weekend averages.
  - As of 3/2/2021, Ohio changed their method of reporting COVID-19 deaths and will report deaths on the day of death, not the day of report, which could result in a fluctuation in the number of deaths from recent weeks due to delayed reporting.
  - Puerto Rico deaths are shown at the territory level as deaths are not reported at the municipio level.
  - Due to data delays, Florida county-level cases and deaths data has not been reported in the last week. Maine has been processing a backlog of positive test results, causing increases in reported cases since 2/15/22. Due to data delays, Washington state cases and deaths data for the last week are incomplete.
  - Historical reports of cases and deaths — for which backfill dates are not available — that exceed 1% of the total new cases or deaths reported in the US that day have been excluded from state daily and weekly trends. However, these are still present in county-level data. Historical reports in the last two weeks (2/11/22 – 2/24/22) are:
    - Kentucky cases: 137 on 2/15
    - South Dakota cases: 676 on 2/18
    - Tennessee deaths: 362 on 2/15
- Testing:** The data presented represent viral COVID-19 laboratory diagnostic and screening test results — not individual people — and exclude antibody and antigen tests, unless stated otherwise. The term Nucleic Acid Amplification Test (NAAT) includes RT-PCR and other testing methods, which were always included in the testing data. CELR (COVID-19 Electronic Lab Reporting) state health department-reported data are used to describe county-level viral COVID-19 NAAT result totals when information is available on patients' county of residence or healthcare providers' practice location. Because the data are deidentified, total NAATs are the number of tests performed, not the number of individuals tested. NAAT positivity rate is the number of positive tests divided by the number of tests performed and resulted. For test positivity, last week data are from 2/16 to 2/22; previous week data are from 2/9 to 2/15; the week one month before data are from 1/19 to 1/25. For number of tests, last week data are from 2/12 to 2/18; previous week data are from 2/5 to 2/11. HHS Protect data are recent as of 10:26 EST on 02/25/2022. Testing data are inclusive of everything received and processed by the CELR system as of 19:00 EST on 02/24/2022.
  - As of 8/31/2021, Washington has been experiencing technical issues. As a result, test positivity and test volume may be incomplete. Due to technical issues and data delays, Tennessee's and Wyoming's test positivity and test volume for the last week may be incomplete.
- Hospitalizations:** Unified Hospitals Dataset in HHS Protect. These data exclude psychiatric, rehabilitation, and religious non-medical hospitals. In addition, hospitals explicitly identified by states/regions as those from which we should not expect reports were excluded from the percent reporting figure. The data presented represents raw data provided; we are working diligently with state liaisons to improve reporting consistency. Data are recent as of 10:50 EST on 02/25/2022.
- Hospital PPE:** Unified Hospitals Dataset in HHS Protect. This figure may differ from state data due to differences in hospital lists and reporting between federal and state systems. These data exclude psychiatric, rehabilitation, and religious non-medical hospitals. Hospitals explicitly identified by states/regions as those from which we should not expect reports were excluded from the percent reporting figure. Data are recent as of 10:57 EST on 02/25/2022.
- State, County, and Metro Area Community Transmission Levels**
  - High Transmission:** Those states, CBSAs, and counties that during the last week reported 100 or more cases per 100,000 population or a lab test positivity at or above 10.0%.
  - Substantial Transmission:** Those states, CBSAs, and counties that during the last week reported from 50 to 99 cases per 100,000 population or a lab test positivity from 8.0% to 9.9%.
  - Moderate Transmission:** Those states, CBSAs, and counties that during the last week reported from 10 to 49 cases per 100,000 population or a lab test positivity from 5.0% to 7.9%.
  - Low Transmission:** Those states, CBSAs, and counties that during the last week reported from 0 to 9 cases per 100,000 population or a lab test positivity from 0.0% to 4.9%.
  - If the two indicators suggest different transmission levels, the higher level is selected. Previous week transmission levels are computed based on current data. See [CDC COVID Data Tracker](#).
- Shortages:** Unified Hospitals Dataset in HHS Protect. These data exclude psychiatric, rehabilitation, and religious non-medical hospitals. Low supply is defined as a hospital reporting they are not able to maintain a 3-day supply of N95s, face masks, gloves, gowns, or eye protection. Data are recent as of 10:57 EST on 02/25/2022.
- Vaccinations:** [CDC COVID Data Tracker](#). Data includes the Moderna, Pfizer BioNTech, and J&J/Janssen COVID-19 vaccines and reflects current data available as of 14:24 EST on 02/25/2022. Data last updated 06:00 EST on 02/25/2022. Persons who are fully vaccinated include those who have received both doses of the Moderna or Pfizer-BioNTech vaccine as well as those who have received one dose of the J&J/Janssen vaccine. COVID-19 vaccines available in the U.S. are authorized only for persons ≥5 years of age (Pfizer-BioNTech) or ≥18 years of age (Moderna and J&J/Janssen). Population denominators reflect the subset of the population of the corresponding age range when specified (e.g., 12+, 12-17, 18+, or 65+), otherwise the total population is used. The count of people who received a booster dose includes anyone who is fully vaccinated and has received another dose of COVID-19 vaccine since August 13, 2021. This includes people who received booster doses and people who received additional doses. CDC has capped the percent of population coverage metrics at 95.0%. These metrics could be greater than 95.0% for multiple reasons, including census denominator data not including all individuals that currently reside in the county (e.g., part time residents) or potential data reporting errors. The following states have ≤80% completeness reporting vaccinations by county, which may result in underestimates of vaccination data for counties: VA (79%), VT (74%), and HI (0%).
- Variants:** Data from [CDC COVID Data Tracker](#). Variant proportions are based on representative CDC sequence data (NS3 + CDC-funded contract sequencing) collected over a 4-week period ending January 29, 2022 for states with at least 300 sequences. Proportions are calculated using empirical (unweighted) data, which are subject to change over time and will be updated as more data become available. Proportions of variants do not represent the total number that may be circulating in the United States and may not match cases reported by states, territories, tribes, and local officials. For states and jurisdictions not listed, CDC has insufficient genomic surveillance data for the specified time period. Data updated by 19:00 ET on 2/22. Data pulled 12:05 EST on 02/25/2022.



# DATA SOURCES & METHODS

STATE PROFILE REPORT | 02.25.2022

Color threshold values are rounded before color classification

Metric	Dark Green	Light Green	Yellow	Orange	Light Red	Red	Dark Red	Darkest Red	
New cases per 100,000 population per week	≤ 4	5 – 9	10 – 49	50 – 99	100 – 199	200 – 499	500 – 749	≥ 750	
Percent change in new cases per 100,000 population	≤ -26%	-25% – -11%	-10% – 0%	1% – 10%	11% – 99%	100% – 999%	≥ 1000%		
Diagnostic test result positivity rate	≤ 2.9%	3.0% – 4.9%	5.0% – 7.9%	8.0% – 9.9%	10.0% – 14.9%	15.0% – 19.9%	20.0% – 24.9%	≥ 25.0%	
Change in test positivity	≤ -2.1%	-2.0% – -0.6%	-0.5% – 0.0%	0.1% – 0.5%	0.6% – 2.0%		≥ 2.1%		
Total diagnostic tests resulted per 100,000 population per week	≥ 5000	3000 – 4999	2000 – 2999	1000 – 1999	500 – 999		≤ 499		
Percent change in tests per 100,000 population	≥ 26%	11% – 25%	1% – 10%	-10% – 0%	-25% – -11%		≤ -26%		
COVID-19 deaths per 100,000 population per week	≤ 0.0		0.1 – 0.9	1.0 – 1.9	2.0 – 4.9	5.0 – 9.9	10.0 – 14.9	≥ 15.0	
Percent change in deaths per 100,000 population	≤ -26%	-25% – -11%	-10% – 0%	1% – 10%	11% – 25%		≥ 26%		
Confirmed new COVID-19 hospital admissions per 100 beds	≤ 1.0	1.1 – 3.0	3.1 – 5.0	5.1 – 10.0	10.1 – 15.0	15.1 – 20.0	≥ 20.1		
Change in new COVID-19 hospital admissions per 100 beds	≤ -26%	-25% – -11%	-10% – 0%	1% – 10%	11% – 25%		≥ 26%		
Percent of hospitals with supply shortages	≤ 9%		10% – 19%	20% – 29%	30% – 39%		≥ 40%		
Change in percent of hospitals with supply shortages	≤ -10%	-9% – -5%	-4% – 0%	1% – 4%	5% – 9%		≥ 10%		
Percent of Population Fully Vaccinated (State Level)	≤ 49.9%		50.0% – 59.9%		60.0% – 69.9%		70.0% – 79.9%		≥ 80.0%