



## STATE PROFILE REPORT 11.24.2021

# MISSOURI

## STATE SYNOPSIS

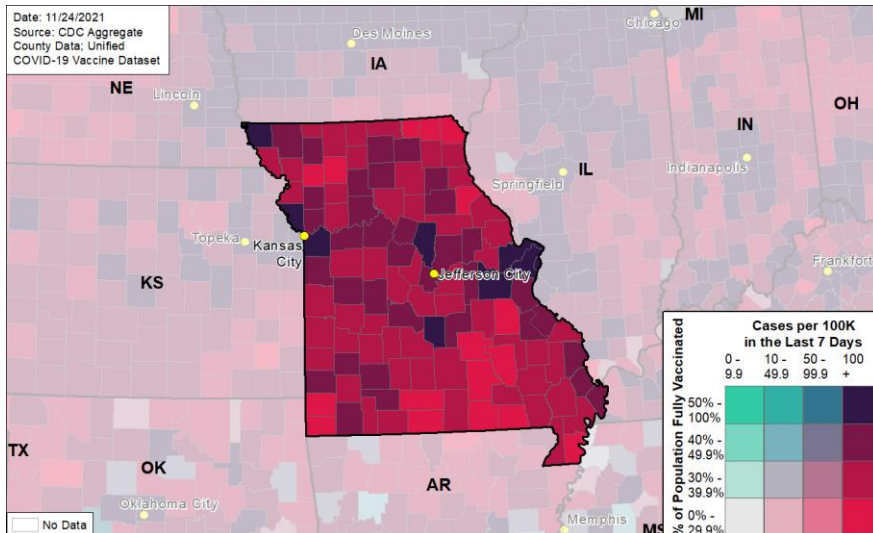
RATE OF NEW COVID-19 CASES PER 100,000  
NUCLEIC ACID AMPLIFICATION TEST (NAAT) POSITIVITY RATE  
NEW CONFIRMED COVID-19 HOSPITAL ADMISSIONS / 100 BEDS  
RATE OF NEW COVID-19 DEATHS PER 100,000  
COMMUNITY TRANSMISSION LEVEL  
PEOPLE RECEIVED AT LEAST 1 DOSE  
PEOPLE 18+ RECEIVED AT LEAST 1 DOSE  
PEOPLE FULLY VACCINATED  
PEOPLE 18+ FULLY VACCINATED  
PEOPLE 65+ RECEIVED BOOSTER

LAST WEEK	CHANGE FROM PREVIOUS WEEK
190	+17%
8.7%	+0.3%
5.5	+27%
2.1	+47%
HIGH TRANSMISSION	
3,642,900 people	59.4% of total pop
3,374,151 people	70.8% of 18+ pop
3,117,242 people	50.8% of total pop
2,933,500 people	61.5% of 18+ pop
372,707 people	43.1% of fully vaccinated 65+ pop

### SARS-CoV-2 Variants of Concern

- The following proportions of variants of concern have been identified in [Missouri](#): Delta (B.1.617.2, AY.\*) 99.2%

## COVID-19 Reported Cases per 100,000 Population (last 7 days) and Percent of Total Population Fully Vaccinated



Starting 11/1/21, several states shifted to the use of report date; this change may result in fluctuations of weekly values and/or week-on-week changes.

The purpose of this report is to develop a shared understanding of the current status of the pandemic at the national, regional, state, and local levels. We recognize that data at the state level may differ from that available at the federal level. Our objective is to use consistent data sources and methods that allow for comparisons to be made across localities. We appreciate your continued support in identifying data discrepancies and improving data completeness and sharing across systems. We look forward to your feedback. All inquiries and requests for information should be directed to <https://www.cdc.gov/dcs/ContactUs/Form>.



COVID-19



# MISSOURI

STATE PROFILE REPORT | 11.24.2021

	STATE, % CHANGE FROM PREVIOUS WEEK		FEMA/HHS REGION	UNITED STATES
	STATE			
NEW COVID-19 CASES (RATE PER 100,000)	11,656 (190)	+17%	36,619 (259)	659,865 (199)
NUCLEIC ACID AMPLIFICATION TEST (NAAT) POSITIVITY RATE	8.7%	+0.3%*	10.9%	6.1%
TOTAL NAAT VOLUME (TESTS PER 100,000)	131,193** (2,138**)	+0%**	256,428** (1,813**)	9,845,546** (2,965**)
NEW COVID-19 DEATHS (RATE PER 100,000)	131 (2.1)	+47%	293 (2.1)	6,878 (2.1)
CONFIRMED NEW COVID-19 HOSPITAL ADMISSIONS (RATE PER 100 BEDS)	830 (5.5)	+28% (+27%)	2,411 (7.1)	41,967 (6.0)
NUMBER OF HOSPITALS WITH SUPPLY SHORTAGES (PERCENT)	8 (7%)	+14%	15 (3%)	284 (5%)
NUMBER OF HOSPITALS WITH STAFF SHORTAGES (PERCENT)	31 (26%)	-3%	81 (17%)	934 (18%)
PEOPLE 12+ INITIATING VACCINATION (PERCENT OF POPULATION)	31,576 (0.6%)	-1.1%	71,709 (0.6%)	1,517,817 (0.5%)
PEOPLE 12-17 INITIATING VACCINATION (PERCENT OF POPULATION)	1,541 (0.3%)	+0.4%	4,306 (0.4%)	109,645 (0.4%)
PEOPLE 18+ INITIATING VACCINATION (PERCENT OF POPULATION)	30,035 (0.6%)	-1.2%	67,403 (0.6%)	1,408,172 (0.5%)
PEOPLE 65+ RECEIVING BOOSTER DOSE	46,099	+7.7%	120,920	2,276,379

\* Indicates absolute change in percentage points.

\*\* Due to delayed reporting, this figure may underestimate total diagnostic tests and week-on-week changes in diagnostic tests.

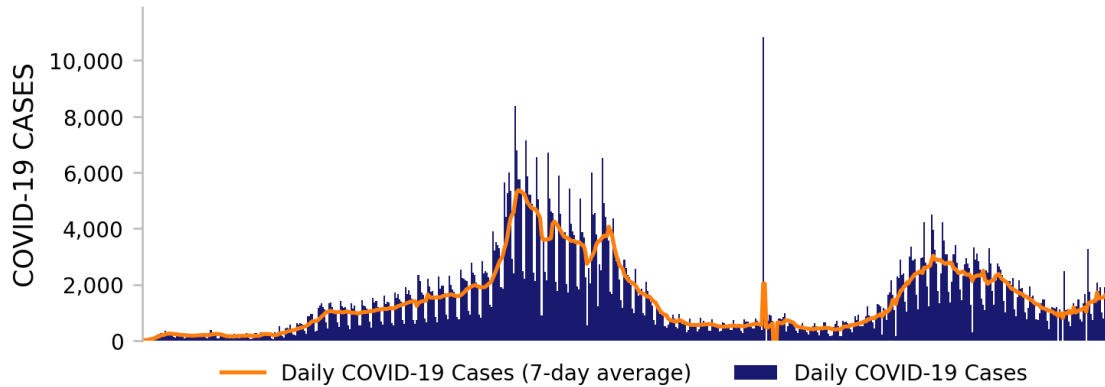
**DATA SOURCES****Note:** Some dates may have incomplete data due to delays in reporting. Data may be backfilled over time, resulting in week-to-week changes.**Cases and Deaths:** State values are aggregated data provided by the states to the CDC. Historical reports of cases and deaths exceeding 1% of the total new cases or deaths reported in the US that day have been excluded. Data are through 11/23/2021; previous week is from 11/10 to 11/16.**Testing:** CELR (COVID-19 Electronic Lab Reporting) state health department-reported data. The term Nucleic Acid Amplification Test (NAAT) includes RT-PCR and other testing methods. Test positivity through 11/21/2021; previous week is from 11/8 to 11/14. Test volume through 11/17/2021; previous week is from 11/4 to 11/10.**Admissions:** Unified Hospitals Dataset in HHS Protect. Data are through 11/22, previous week is from 11/9 to 11/15.**Shortages:** Unified Hospitals Dataset in HHS Protect. Values presented show the latest reports from hospitals in the week ending 11/22/2021 for staffing and the week ending 11/17/2021 for supplies.**Vaccinations:** [CDC COVID Data Tracker](#). Data includes the Moderna, Pfizer BioNTech, and J&J/Janssen COVID-19 vaccines and reflects current data available as of 12:06 EST on 11/24/2021. Data last updated 06:00 EST on 11/24/2021. People initiating vaccination include those who have received the first dose of the Moderna or Pfizer-BioNTech vaccine as well as those who have received one dose of the J&J/Janssen vaccine. Population denominators reflect the subset of the population of the corresponding age range.**METHODS:** Details available on last two pages of report.



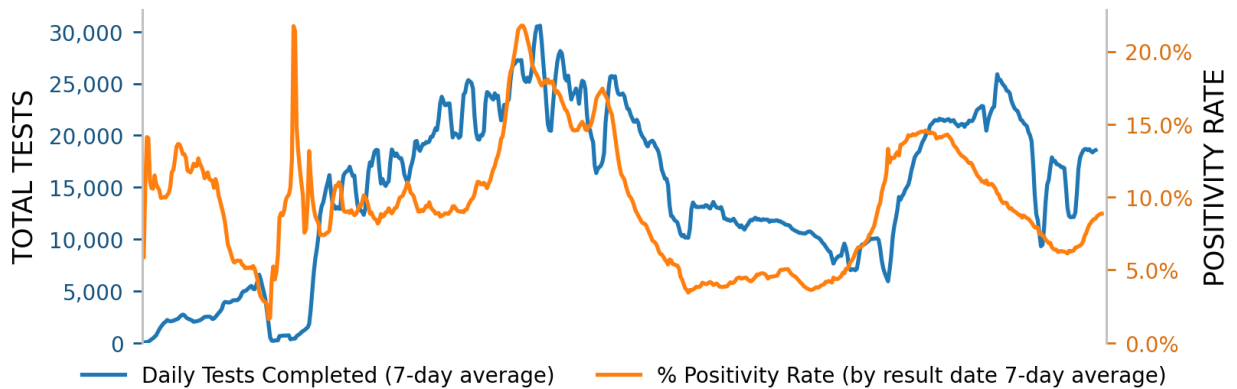
# MISSOURI

STATE PROFILE REPORT | 11.24.2021

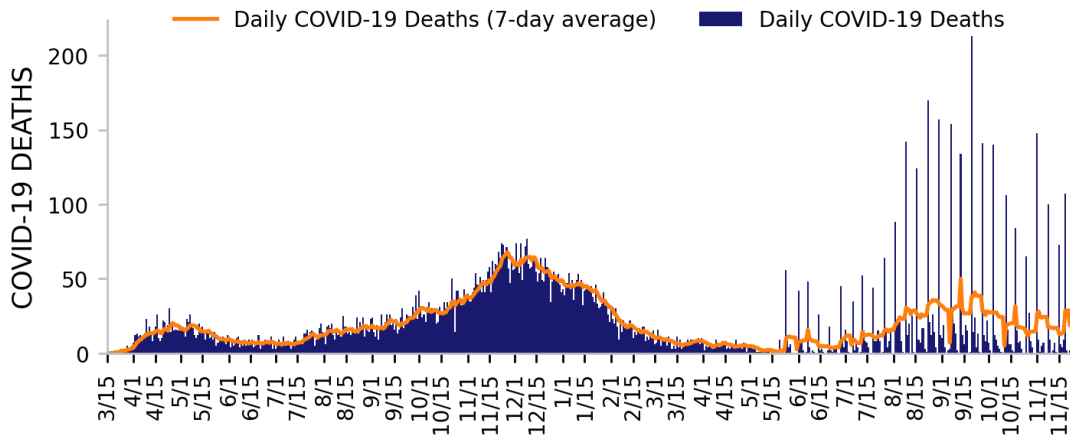
## NEW CASES



## TESTING



## NEW DEATHS



### DATA SOURCES

**Note:** Some dates may have incomplete data due to delays in reporting. Data may be backfilled over time, resulting in week-to-week changes. All three trends share the same horizontal axis shown on the bottom figure.

**Cases and Deaths:** State values are aggregated data provided by the states to the CDC. Historical cases and deaths exceeding 1% of the total new cases or deaths reported in the US that day have been excluded. Data are through 11/23/2021.

**Testing:** CELR (COVID-19 Electronic Lab Reporting) state health department-reported data. Test positivity through 11/21/2021. Test volume through 11/17/2021.

**METHODS:** Details available on last two pages of report.



# MISSOURI

STATE PROFILE REPORT | 11.24.2021

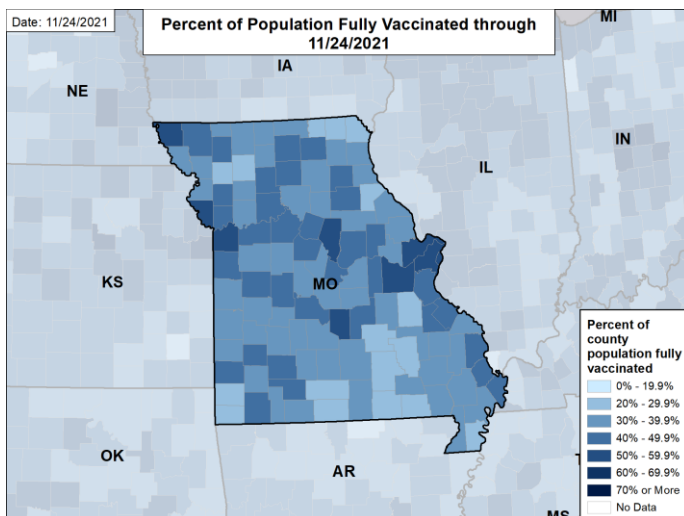
## STATE VACCINATION SUMMARY

**DOSES DELIVERED** 9,295,655  
151,458 per 100k

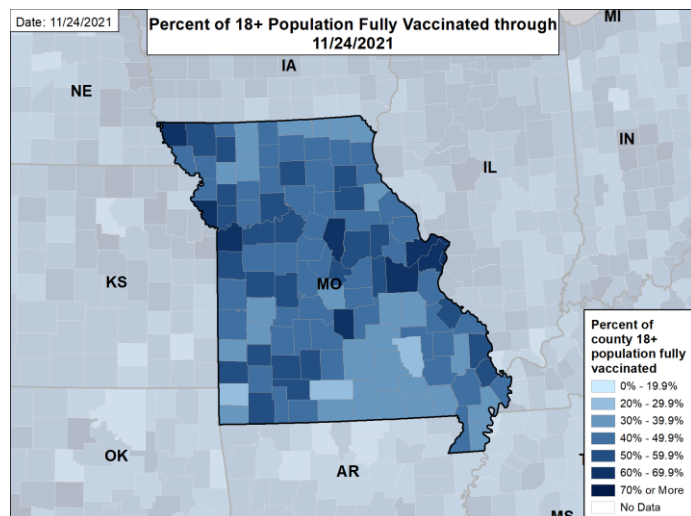
**DOSES ADMINISTERED** 7,329,322  
119,420 per 100k

	RECEIVED AT LEAST ONE DOSE	FULLY VACCINATED	RECEIVED BOOSTER DOSE
<b>ALL PEOPLE</b>	3,642,900 59.4% of total population	3,117,242 50.8% of total population	642,006 20.6% of fully vaccinated total pop
<b>PEOPLE 12-17</b>	217,167 46.3% of 12-17 population	183,612 39.2% of 12-17 population	N/A
<b>PEOPLE 18+</b>	3,374,151 70.8% of 18+ population	2,933,500 61.5% of 18+ population	641,431 21.9% of fully vaccinated 18+ pop
<b>PEOPLE 65+</b>	972,936 91.6% of 65+ population	864,799 81.4% of 65+ population	372,707 43.1% of fully vaccinated 65+ pop

### PERCENT OF POPULATION FULLY VACCINATED



### PERCENT OF 18+ POPULATION FULLY VACCINATED



### DATA SOURCES

County reporting completeness for Missouri is 91.2%.

**Vaccinations:** [CDC COVID Data Tracker](#). Data includes the Moderna, Pfizer BioNTech, and J&J/Janssen COVID-19 vaccines and reflects current data available as of 12:06 EST on 11/24/2021. Data last updated 06:00 EST on 11/24/2021. Persons who are fully vaccinated include those who have received both doses of the Moderna or Pfizer-BioNTech vaccine as well as those who have received one dose of the J&J/Janssen vaccine. Allocations are made pro rata (equal based on population) from which jurisdictions are then to order.

**METHODS:** Details available on last two pages of report.

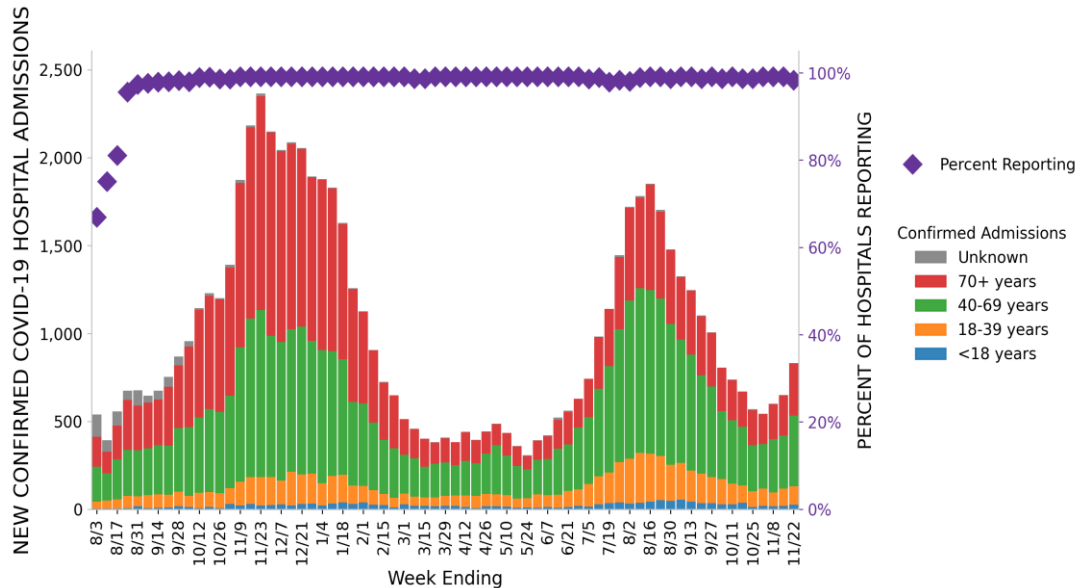


# MISSOURI

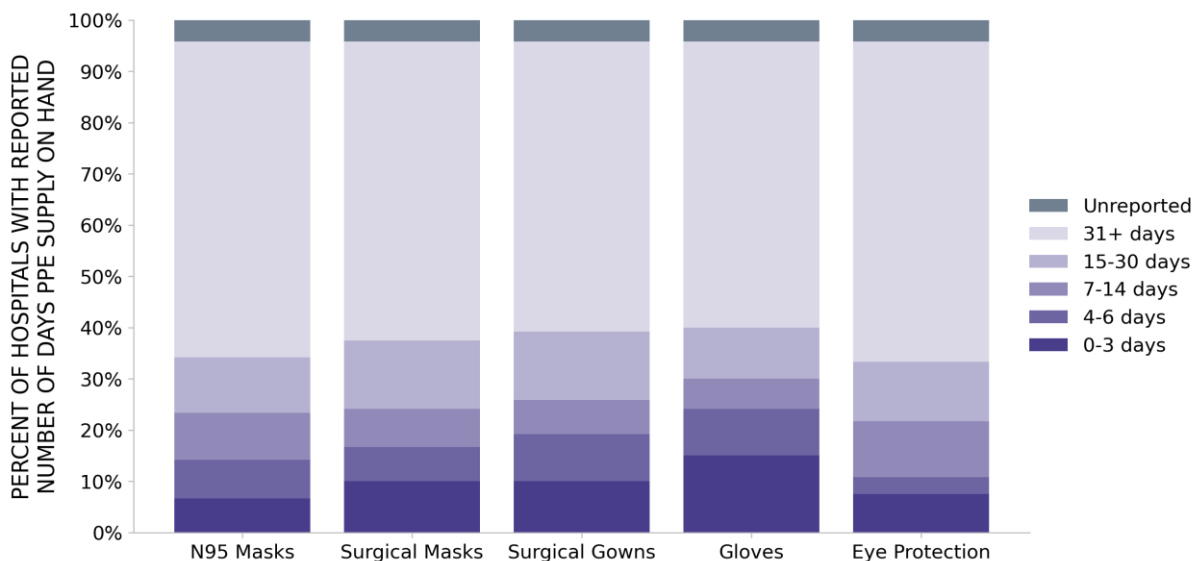
STATE PROFILE REPORT | 11.24.2021

120 hospitals are expected to report in Missouri

## HOSPITAL ADMISSIONS



## HOSPITAL PPE SUPPLIES



### DATA SOURCES

**Hospitalizations:** Unified Hospitals Dataset in HHS Protect. These data exclude psychiatric, rehabilitation, and religious non-medical hospitals. Hospitals explicitly identified by states/regions as those from which we should not expect reports were excluded from the percent reporting figure. Data are through 11/22/2021.

**PPE:** Unified Hospitals Dataset in HHS Protect. These data exclude psychiatric, rehabilitation, and religious non-medical hospitals. Values presented show the latest reports from hospitals in the week ending 11/17/2021.

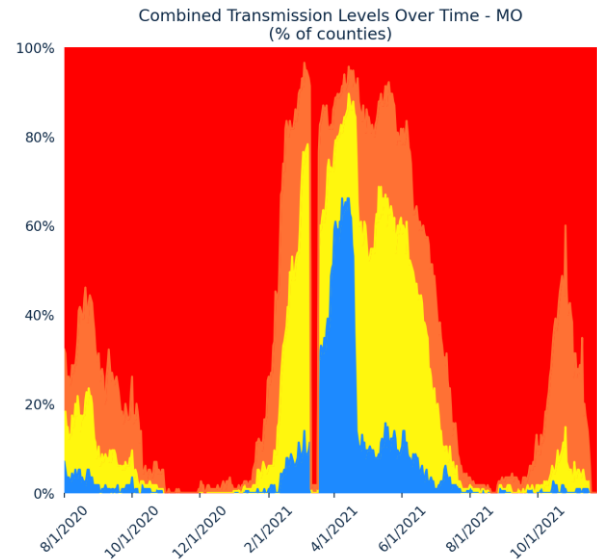
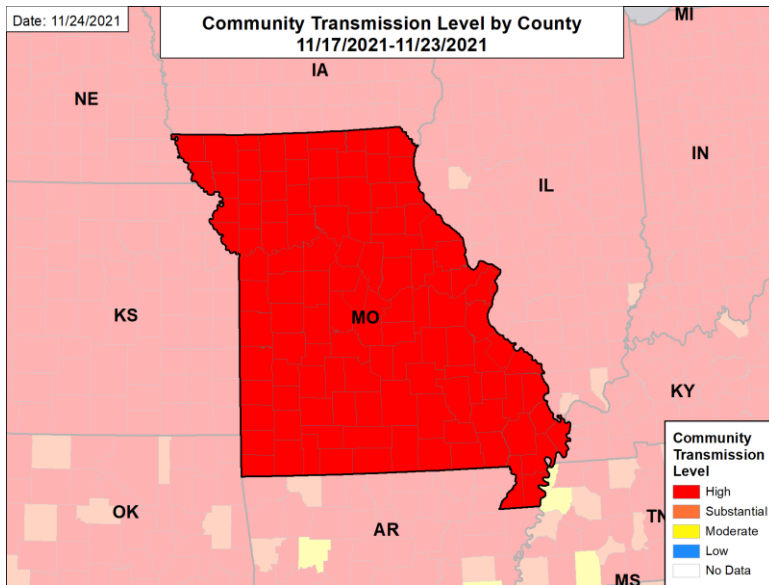
**METHODS:** Details available on last two pages of report.



# MISSOURI

STATE PROFILE REPORT | 11.24.2021

## COMMUNITY TRANSMISSION BY COUNTY AND METRO AREA



### COUNTIES AND METRO AREAS BY COMBINED TRANSMISSION LEVEL

CATEGORY	LOW TRANSMISSION BLUE	MODERATE TRANSMISSION YELLOW	SUBSTANTIAL TRANSMISSION ORANGE	HIGH TRANSMISSION RED
# OF COUNTIES (CHANGE)	0 (0)	0 (↓3)	0 (↓9)	115 (↑12)
# OF METRO AREAS (CHANGE)	0 (0)	0 (0)	0 (↓1)	27 (↑1)

**All Red Counties:** Jackson, St. Louis, St. Charles, Jefferson, Greene, Buchanan, Clay, Boone, Christian, Franklin, Jasper, Cass, St. Louis City, Lincoln, Cape Girardeau, St. Francois, Cole, Johnson, Scott, Callaway, Platte, Phelps, Pettis, Howell, Nodaway, Pike, Taney, Clinton, Perry, Butler, Marion, Laclede, Stoddard, Newton, Audrain, Mississippi, Webster, Moniteau, Andrew, Camden, Barry, Bollinger, Warren, Dunklin, Grundy, Randolph, Ray, Lafayette, Texas, Pulaski, Washington, Lawrence, Polk, Stone, Saline, Henry, Vernon, Dent, Dallas, Miller, Douglas, Ste. Genevieve, Bates, Adair, Chariton, Benton, New Madrid, Gentry, Ozark, Crawford, Knox, Wright, Cedar, Atchison, Cooper, Gasconade, Wayne, Livingston, Carroll, Ralls, Osage, McDonald, Harrison, Monroe, Morgan, Barton, DeKalb, Lewis, Clark, Ripley, Madison, Pemiscot, Macon, Howard, Oregon, Shelby, Holt, Maries, Shannon, Hickory, Daviess, Sullivan, Iron, Linn, Dade, St. Clair, Montgomery, Caldwell, Reynolds, Putnam, Schuyler, Worth, Carter, Scotland, Mercer

**All Red CBSAs:** St. Louis, Kansas City, Springfield, St. Joseph, Jefferson City, Columbia, Joplin, Cape Girardeau, Farmington, Warrensburg, Sikeston, Rolla, Sedalia, Hannibal, Poplar Bluff, West Plains, Maryville, Branson, Lebanon, Mexico, Kennett, Moberly, Fort Leonard Wood, Kirksville, Marshall, Quincy, Fort Madison-Keokuk

#### DATA SOURCES

Maps and figures reflect 7-day average of data from 11/17-11/23 (cases), 11/15-11/21 (tests). Metro areas and counties are listed in order of the total number of cases in the last week from largest to smallest.

**Note:** Most recent days may have incomplete reporting.

**Cases:** County-level data are from a CDC managed aggregate county dataset compiled from state and local health departments; therefore, the values may not match those reported directly by the state. Data are through 11/23/2021.

**Testing:** CELR (COVID-19 Electronic Lab Reporting) state health department-reported data. Data are through 11/21/2021.

**Combined Transmission Level:** If the two indicators suggest different transmission levels, the higher level is selected. Previous week transmission levels are computed based on current data. See [CDC COVID Data Tracker](#).

**METHODS:** Details available on last two pages of report.

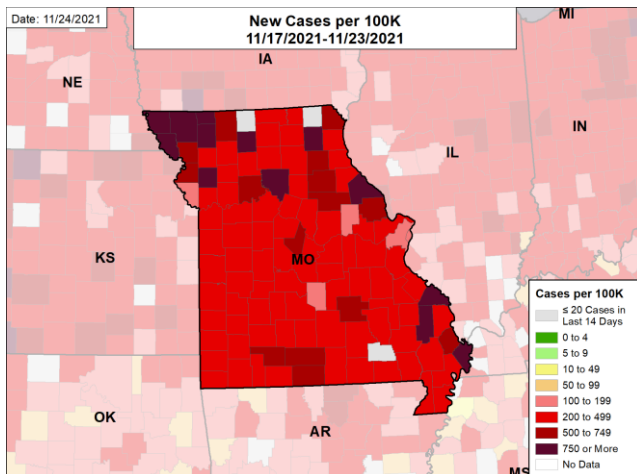


# MISSOURI

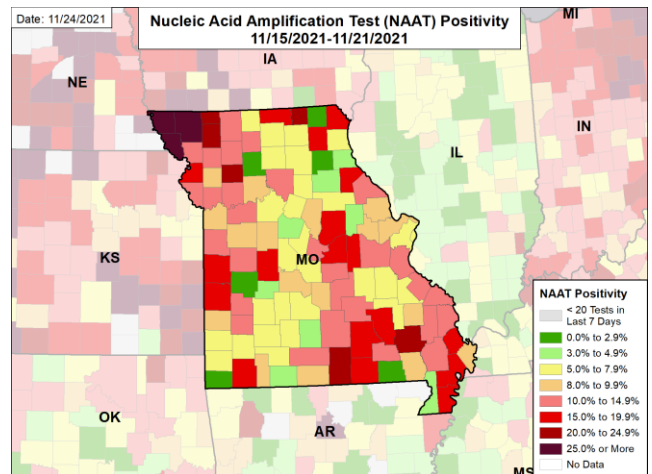
STATE PROFILE REPORT | 11.24.2021

## CASE RATES, NAAT POSITIVITY, HOSPITAL ADMISSIONS, AND DEATH RATES

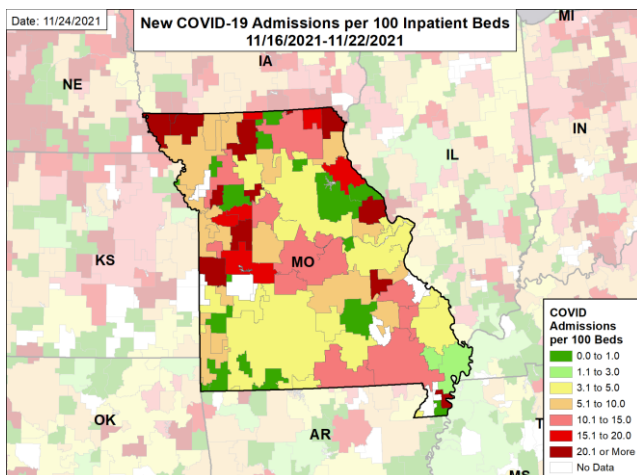
### NEW CASES PER 100,000



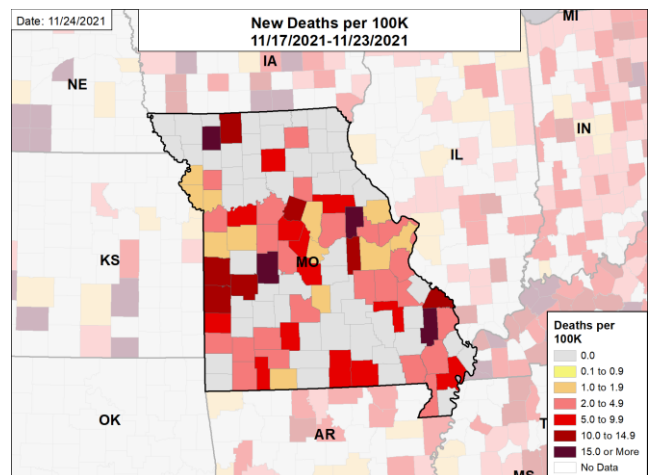
### NUCLEIC ACID AMPLIFICATION TEST (NAAT) POSITIVITY



### CONFIRMED NEW COVID-19 ADMISSIONS PER 100 INPATIENT BEDS



### NEW DEATHS PER 100,000



#### DATA SOURCES

**Note:** Some dates may have incomplete data due to delays in reporting. Data may be backfilled over time, resulting in week-to-week changes.

**Cases and Deaths:** County-level data are from a CDC managed aggregate county dataset compiled from state and local health departments; therefore, the values may not match those reported directly by the state. Data are through 11/23/2021.

**Testing:** CELR (COVID-19 Electronic Lab Reporting) state health department-reported data. The term Nucleic Acid Amplification Test (NAAT) includes RT-PCR and other testing methods. Data are through 11/21/2021.

**Hospitalizations:** Unified Hospitals Dataset in HHS Protect. Totals include only confirmed COVID-19 admissions. HSA indicates Hospital Service Area. Hospitals are assigned to HSA based on zip code where known. In some areas, reports are aggregates of multiple facilities that cross HSA boundaries; in these cases, values are assigned based on the zip code for the aggregate. Data are through 11/22/2021.

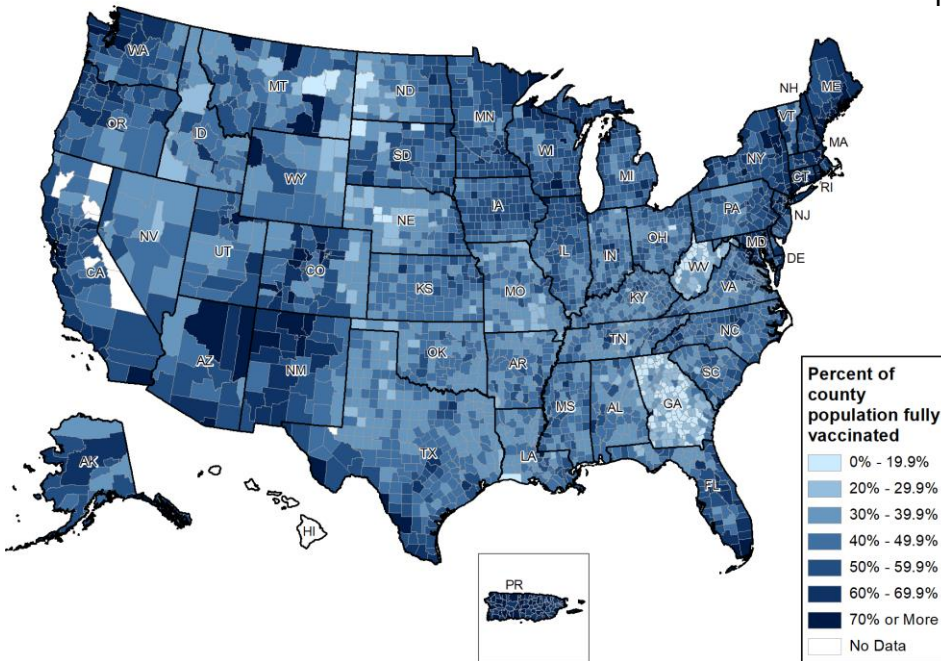
**METHODS:** Details available on last two pages of report.





# National Picture: Vaccinations

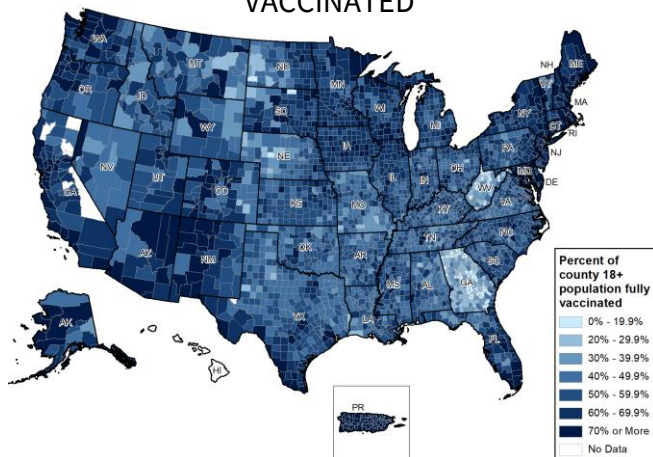
## PERCENT OF POPULATION FULLY VACCINATED



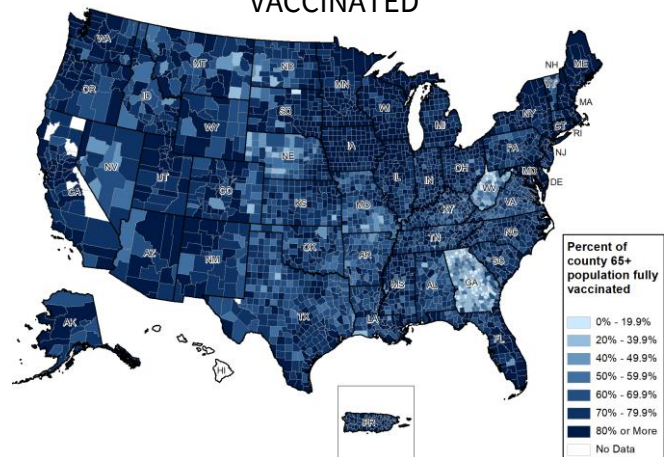
## NATIONAL RANKING OF POPULATION FULLY VACCINATED

National Rank	State	National Rank	State
1	PR	27	UT
2	VT	28	TX
3	RI	29	AZ
4	ME	30	MI
5	CT	31	KS
6	MA	32	SD
7	NY	33	NV
8	NJ	34	AK
9	MD	35	NC
10	WA	36	OH
11	NH	37	KY
12	VA	38	MT
13	DC	39	OK
14	OR	40	SC
15	NM	41	MO
16	CO	42	IN
17	CA	43	TN
18	MN	44	GA
19	IL	45	AR
20	FL	46	LA
21	DE	47	ND
22	HI	48	MS
23	WI	49	AL
24	PA	50	WY
25	NE	51	ID
26	IA	52	WV

## PERCENT OF 18+ POPULATION FULLY VACCINATED



## PERCENT OF 65+ POPULATION FULLY VACCINATED



### DATA SOURCES

**Vaccinations:** [CDC COVID Data Tracker](#). Data includes the Moderna, Pfizer BioNTech, and J&J/Janssen COVID-19 vaccines and reflects current data available as of 12:06 EST on 11/24/2021. Data last updated 06:00 EST on 11/24/2021. Persons who are fully vaccinated include those who have received both doses of the Moderna or Pfizer-BioNTech vaccine as well as those who have received one dose of the J&J/Janssen vaccine. Allocations are made pro rata (equal based on population) from which jurisdictions are then to order. The following states have  $\leq 80\%$  completeness reporting vaccinations by county, which may result in underestimates of vaccination data for counties: VT (74%), WV (60%), GA (58%), and HI (0%). Idaho provides vaccine data only for vaccine recipients who are 18 years and older, in line with state laws. COVID-19 vaccination administration data are unavailable for the Idaho population aged less than 18 years.

**METHODS:** Details available on last two pages of report.



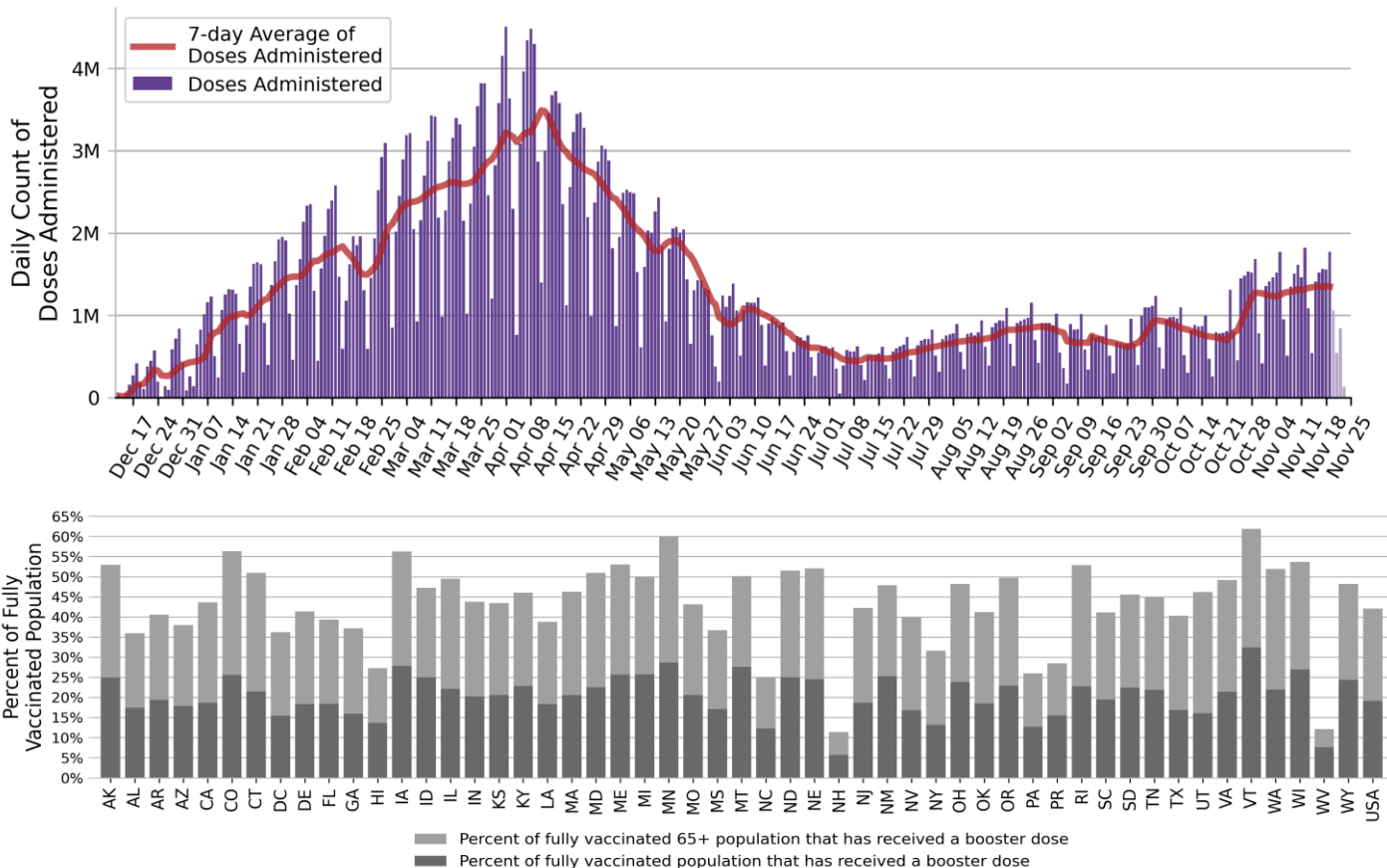


# National Picture: Vaccinations

NATIONAL COVID-19 VACCINE SUMMARY AS OF 11/24

<b>DOSES DELIVERED</b>	572,190,175 172,342 per 100k	<b>DOSES ADMINISTERED</b>	454,447,737 136,878 per 100k
<b>PEOPLE RECEIVED AT LEAST ONE DOSE</b>	231,367,686 69.7% of total pop.	<b>PEOPLE FULLY VACCINATED</b>	196,168,756 59.1% of total pop.
<b>PEOPLE 12-17 RECEIVED AT LEAST ONE DOSE</b>	15,378,772 60.9% of 12-17 pop.	<b>PEOPLE 12-17 FULLY VACCINATED</b>	12,920,973 51.2% of 12-17 pop.
<b>PEOPLE 18+ RECEIVED AT LEAST ONE DOSE</b>	212,308,277 82.2% of 18+ pop.	<b>PEOPLE 18+ FULLY VACCINATED</b>	183,103,767 70.9% of 18+ pop.
<b>PEOPLE 65+ RECEIVED AT LEAST ONE DOSE</b>	54,796,073 99.9% of 65+ pop.	<b>PEOPLE 65+ FULLY VACCINATED</b>	47,177,423 86.1% of 65+ pop.
<b>PEOPLE RECEIVED ADDITIONAL DOSE</b>	37,499,004 19.1% of fully vaccinated total pop.	<b>PEOPLE 65+ RECEIVED ADDITIONAL DOSE</b>	19,860,865 42.1% of fully vaccinated 65+ pop.

## DAILY NATIONAL COUNT OF VACCINE DOSES ADMINISTERED BY DATE OF ADMINISTRATION



### DATA SOURCES

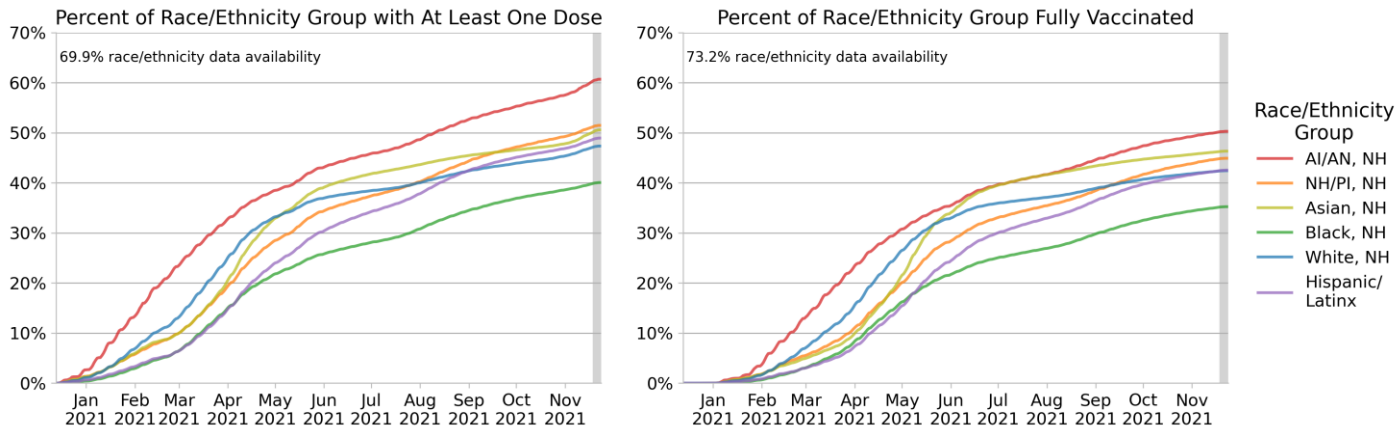
**Vaccinations:** [CDC COVID Data Tracker](#). Data includes the Moderna, Pfizer BioNTech, and J&J/Janssen COVID-19 vaccines and reflects current data available as of 12:06 EST on 11/24/2021. Data last updated 06:00 EST on 11/24/2021. Persons who are fully vaccinated include those who have received both doses of the Moderna or Pfizer-BioNTech vaccine as well as those who have received one dose of the J&J/Janssen vaccine. Allocations are made pro rata (equal based on population) from which jurisdictions are then to order. The count of people who received a booster dose includes anyone who is fully vaccinated and has received another dose of COVID-19 vaccine since August 13, 2021. This includes people who received booster doses and people who received additional doses. Due to delays in reporting, data on doses administered in recent days (as reflected by lighter blue coloring in the Daily National Count figure) may be an underestimate of the actual value.

**METHODS:** Details available on last two pages of report.

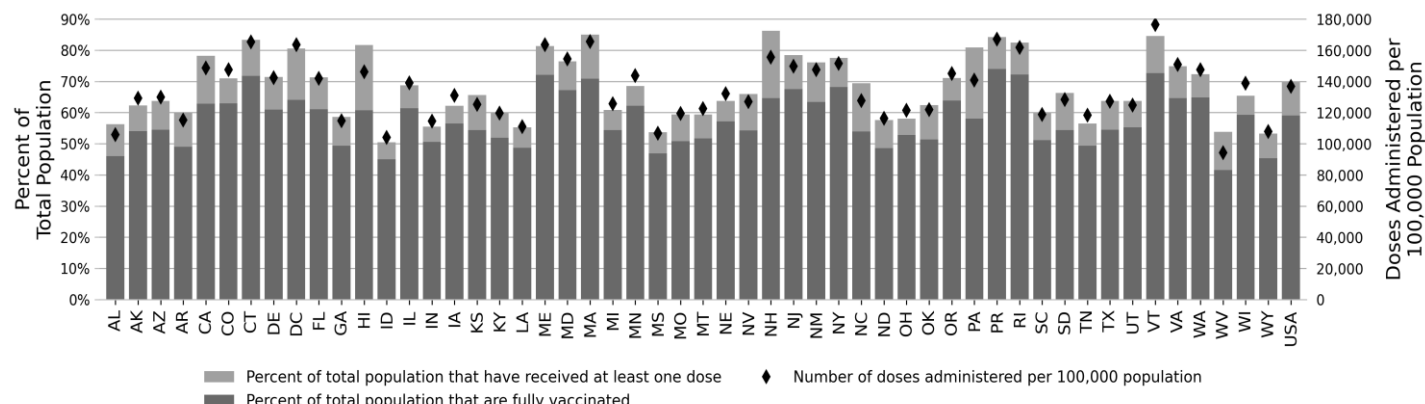
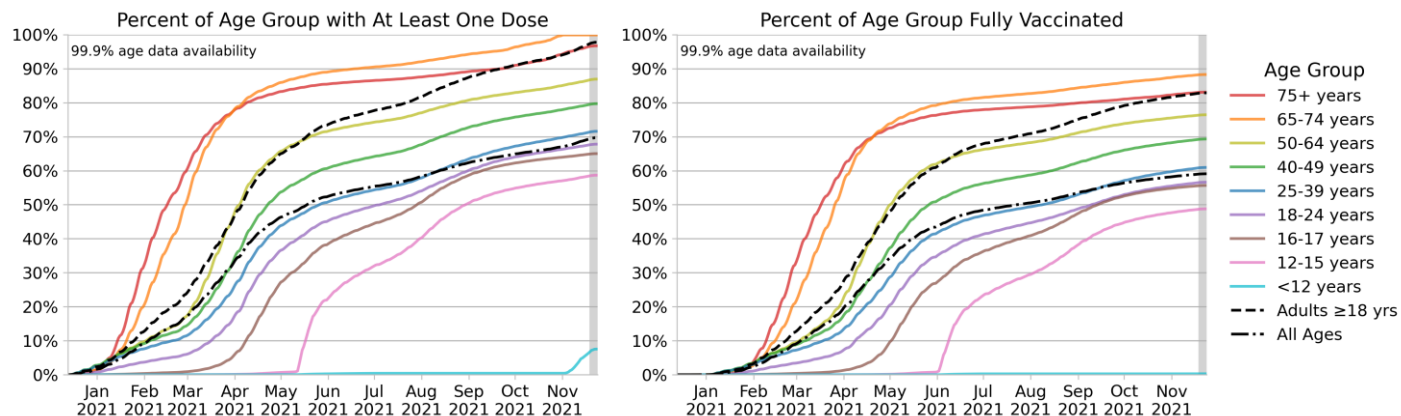


# National Picture: Vaccinations

## NATIONAL SUMMARY OF VACCINATIONS BY RACE/ETHNICITY



## NATIONAL SUMMARY OF VACCINATIONS BY AGE



### DATA SOURCES

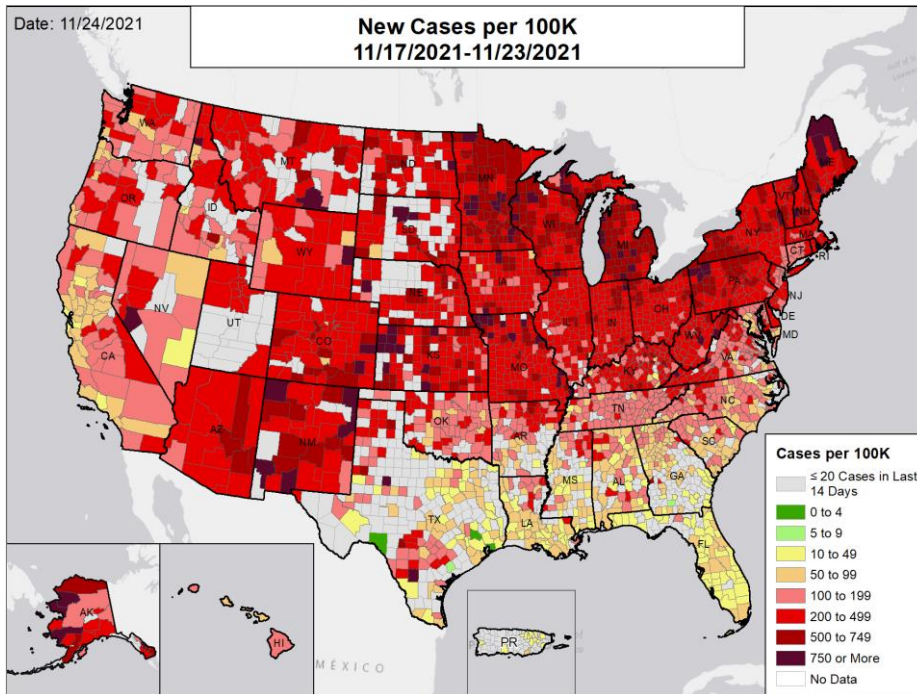
**Vaccinations:** CDC COVID Data Tracker. Data includes the Moderna, Pfizer BioNTech, and J&J/Janssen COVID-19 vaccines and reflects current data available as of 12:06 EST on 11/24/2021. Data last updated 06:00 EST on 11/24/2021. Persons who are fully vaccinated include those who have received both doses of the Moderna or Pfizer-BioNTech vaccine as well as those who have received one dose of the J&J/Janssen vaccine. Allocations are made pro rata (equal based on population) from which jurisdictions are then to order. Race/Ethnicity data were available for 69.9% receiving at least one dose and 73.2% fully vaccinated. Age data were available for 100.0% receiving at least one dose and 100.0% fully vaccinated. Texas does not report demographic-specific dose number information to CDC, so data for Texas are not represented in demographic trends figures. "NH" stands for Non-Hispanic/Latinx, "AI/AN" stands for American Indian or Alaska Native, and "NH/PI" stands for Native Hawaiian or Pacific Islander.

**METHODS:** Details available on last two pages of report.



# National Picture: Cases

## NEW CASES PER 100,000

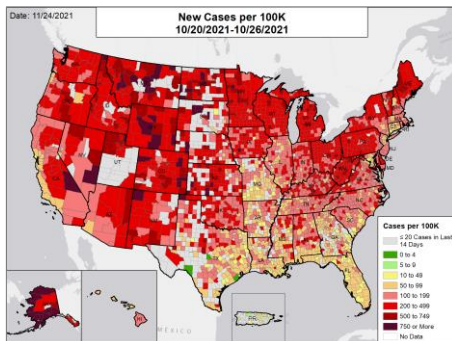


## NATIONAL RANKING OF NEW CASES PER 100,000

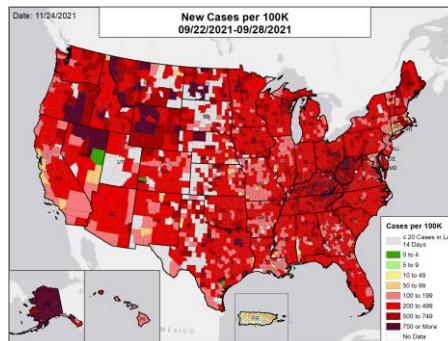
National Rank	State	National Rank	State
1	PR	27	IL
2	FL	28	DE
3	LA	29	MT
4	HI	30	WY
5	GA	31	MA
6	AL	32	KS
7	TX	33	SD
8	MS	34	RI
9	CA	35	NE
10	SC	36	AK
11	DC	37	WV
12	MD	38	IA
13	NC	39	IN
14	VA	40	UT
15	OR	41	PA
16	TN	42	OH
17	WA	43	ND
18	OK	44	AZ
19	AR	45	VT
20	NV	46	CO
21	CT	47	ME
22	NJ	48	WI
23	ID	49	NM
24	MO	50	NH
25	KY	51	MN
26	NY	52	MI

## NEW CASES PER 100,000 IN THE WEEK:

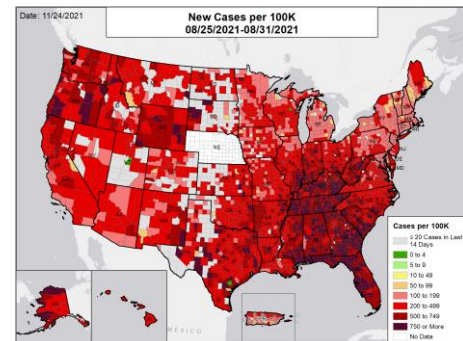
### ONE MONTH BEFORE



### TWO MONTHS BEFORE



### THREE MONTHS BEFORE



## DATA SOURCES

**Note:** Some dates may have incomplete data due to delays in reporting. Data may be backfilled over time, resulting in week-to-week changes.

**Cases:** County-level data are from a CDC managed aggregate county dataset compiled from state and local health departments; therefore, the values may not match those reported directly by the state. State values are aggregated data provided by the states to the CDC. As of 6/4, Florida is only updating their county case data on Fridays, therefore values for the last week may be an underestimate. As of 6/30, Nebraska was no longer updating their state dashboard and since 5/26, Nebraska was reporting by Local Health Department instead of county; therefore, between 5/25 and 9/1 no county case and death data are available. As of 9/21, Nebraska began providing county case and death data directly to CDC, with daily data going back to 9/2. The week one month before is from 10/20 to 10/26; the week two months before is from 9/22 to 9/28; the week three months before is from 8/25 to 8/31.

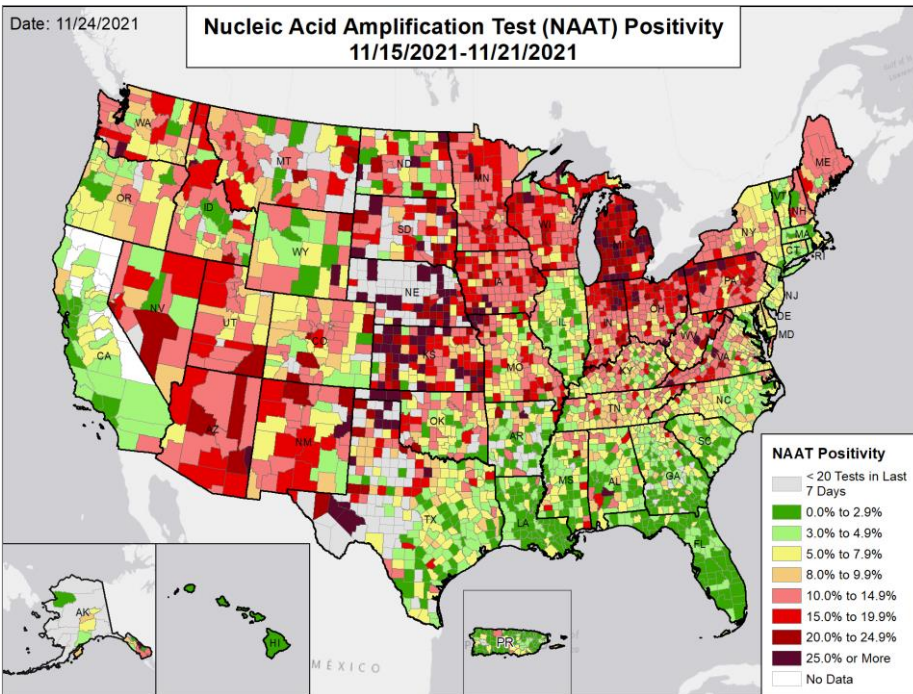
**METHODS:** Details available on last two pages of report.





# National Picture: NAAT Positivity

## NUCLEIC ACID AMPLIFICATION TEST (NAAT) POSITIVITY

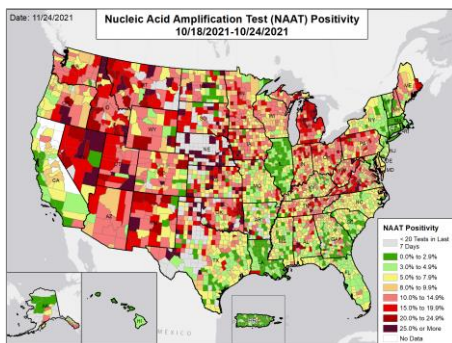


## NATIONAL RANKING OF NAAT POSITIVITY

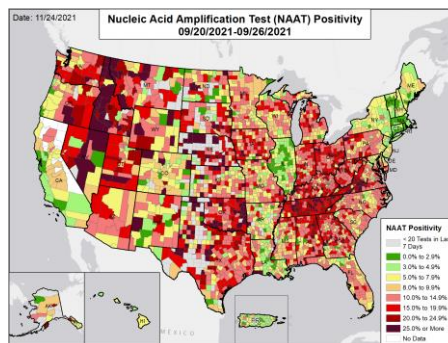
National Rank	State	National Rank	State
1	DC	27	DE
2	HI	28	KY
3	LA	29	WA
4	CA	30	OK
5	FL	31	MO
6	PR	32	NH
7	MA	33	ID
8	GA	34	CO
9	SC	35	ME
10	VT	36	NV
11	MD	37	ND
12	IL	38	WV
13	CT	39	MT
14	RI	40	KS
15	NY	41	UT
16	AL	42	PA
17	OR	43	MN
18	NJ	44	WI
19	TX	45	OH
20	AK	46	IN
21	NC	47	NM
22	AR	48	IA
23	MS	49	AZ
24	TN	50	NE
25	VA	51	SD
26	WY	52	MI

## NUCLEIC ACID AMPLIFICATION TEST (NAAT) POSITIVITY IN THE WEEK:

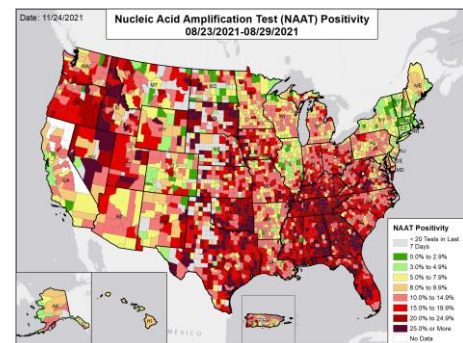
### ONE MONTH BEFORE



### TWO MONTHS BEFORE



### THREE MONTHS BEFORE



## DATA SOURCES

**Note:** Some dates may have incomplete data due to delays in reporting. Data may be backfilled over time, resulting in week-to-week changes.

**Testing:** Combination of CELR (COVID-19 Electronic Lab Reporting) state health department-reported data and HHS Protect laboratory data (provided directly to Federal Government from public health labs, hospital labs, and commercial labs). The term Nucleic Acid Amplification Test (NAAT) includes RT-PCR and other testing methods. Data are through 11/21/2021. The week one month before is from 10/18 to 10/24; the week two months before is from 9/20 to 9/26; the week three months before is from 8/23 to 8/29. As of 8/31/2021, Washington has been experiencing technical issues. As a result, test positivity and test volume may be incomplete.

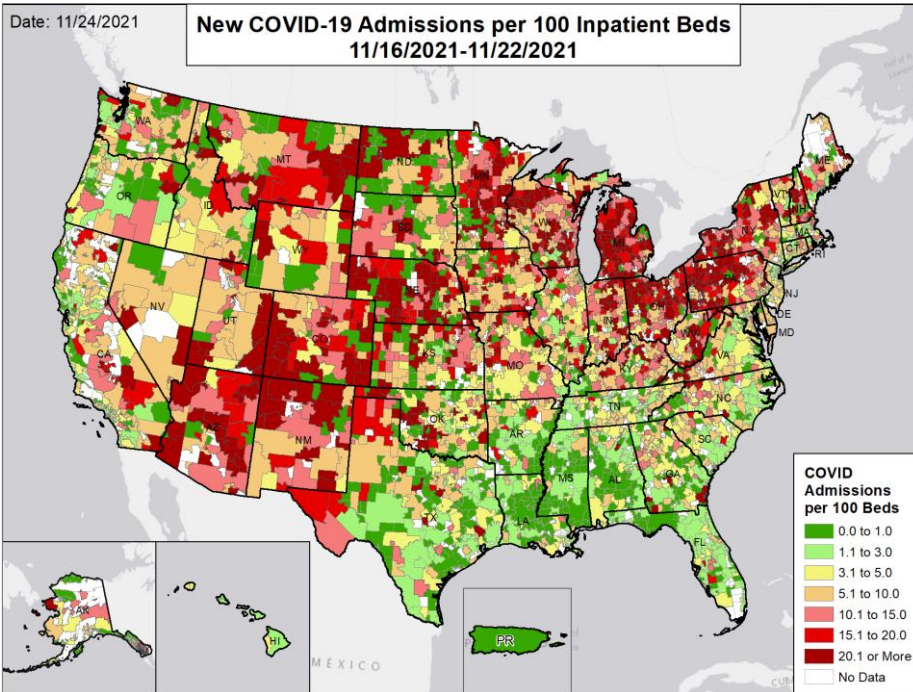
**METHODS:** Details available on last two pages of report.



# National Picture: Hospital Admissions

CONFIRMED NEW COVID-19 ADMISSIONS PER 100 INPATIENT BEDS

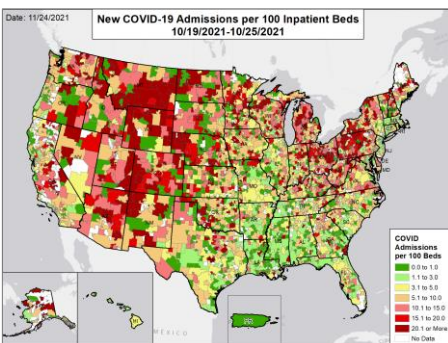
NATIONAL RANKING OF CONFIRMED ADMISSIONS PER 100 BEDS



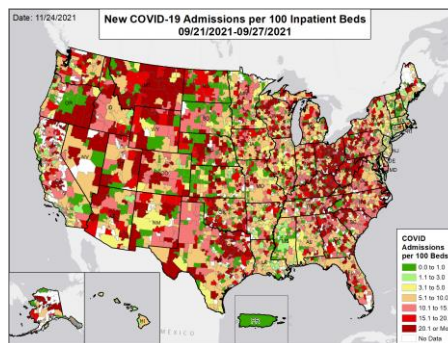
National Rank	State	National Rank	State
1	PR	27	AK
2	MS	28	NV
3	HI	29	OK
4	LA	30	VT
5	DC	31	KS
6	AL	32	ME
7	FL	33	WV
8	TN	34	ID
9	CT	35	KY
10	AR	36	IA
11	SC	37	IN
12	RI	38	ND
13	NJ	39	SD
14	VA	40	UT
15	NC	41	PA
16	CA	42	WY
17	TX	43	NH
18	OR	44	NE
19	MA	45	MN
20	WA	46	OH
21	GA	47	AZ
22	DE	48	WI
23	MD	49	NM
24	IL	50	MT
25	NY	51	MI
26	MO	52	CO

CONFIRMED NEW COVID-19 ADMISSIONS PER 100 INPATIENT BEDS IN THE WEEK:

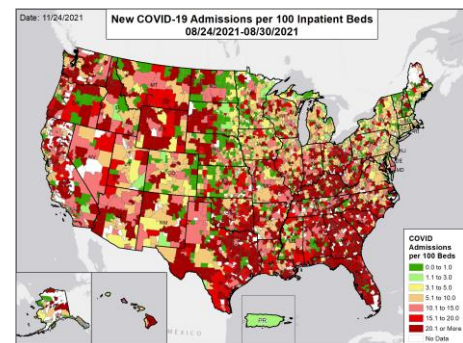
ONE MONTH BEFORE



TWO MONTHS BEFORE



THREE MONTHS BEFORE



## DATA SOURCES

**Note:** Some data may have incomplete data due to delays in reporting. Data may be backfilled over time, resulting in week-to-week changes.

**Admissions:** Unified Hospitals Dataset in HHS Protect through 11/22/2021. Totals include only confirmed COVID-19 admissions. Puerto Rico is shown at the territory level as HSAs are not defined. The week one month before is from 10/19 to 10/25; the week two months before is from 9/21 to 9/27; the week three months before is from 8/24 to 8/30. HSA indicates Hospital Service Area. Hospitals are assigned to HSA based on zip code where known. In some areas, reports are aggregates of multiple facilities that cross HSA boundaries; in these cases, values are assigned based on the zip code for the aggregate.

**METHODS:** Details available on last two pages of report.

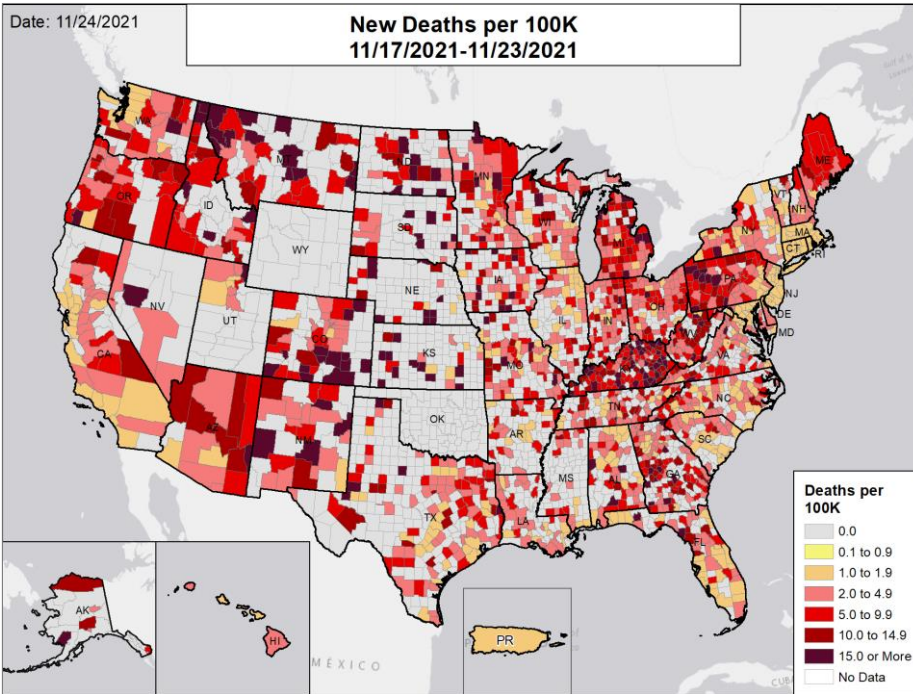




# National Picture: Deaths

## NEW DEATHS PER 100,000

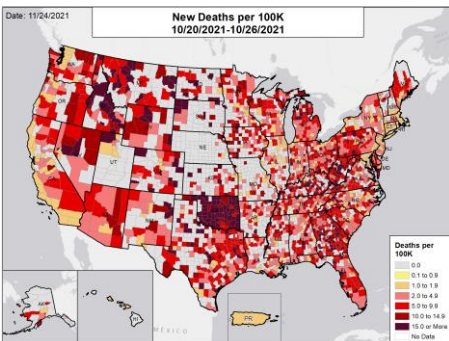
## NATIONAL RANKING OF NEW DEATHS PER 100,000



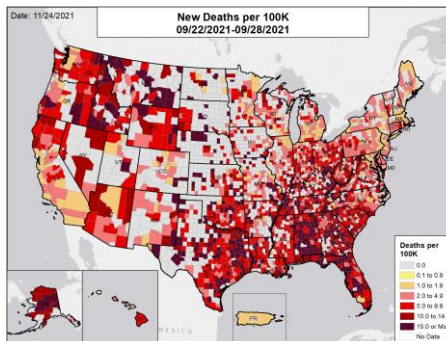
National Rank	State	National Rank	State
1	WY	27	MO
2	FL	28	UT
3	DC	29	WI
4	KY	30	NE
5	PR	31	TN
6	MS	32	NV
7	AL	33	SD
8	CT	34	IA
9	KS	35	NH
10	MD	36	MI
11	NJ	37	OH
12	RI	38	MN
13	AR	39	AK
14	NY	40	IN
15	NC	41	OK
16	LA	42	GA
17	MA	43	ND
18	IL	44	PA
19	CA	45	NM
20	HI	46	CO
21	VT	47	ME
22	VA	48	AZ
23	SC	49	OR
24	WA	50	WV
25	DE	51	ID
26	TX	52	MT

## NEW DEATHS PER 100,000 IN THE WEEK:

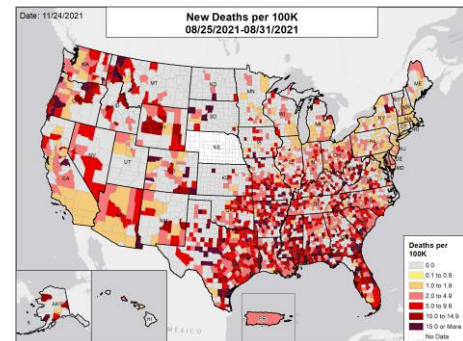
### ONE MONTH BEFORE



### TWO MONTHS BEFORE



### THREE MONTHS BEFORE



#### DATA SOURCES

**Note:** Some dates may have incomplete data due to delays in reporting. Data may be backfilled over time, resulting in week-to-week changes.

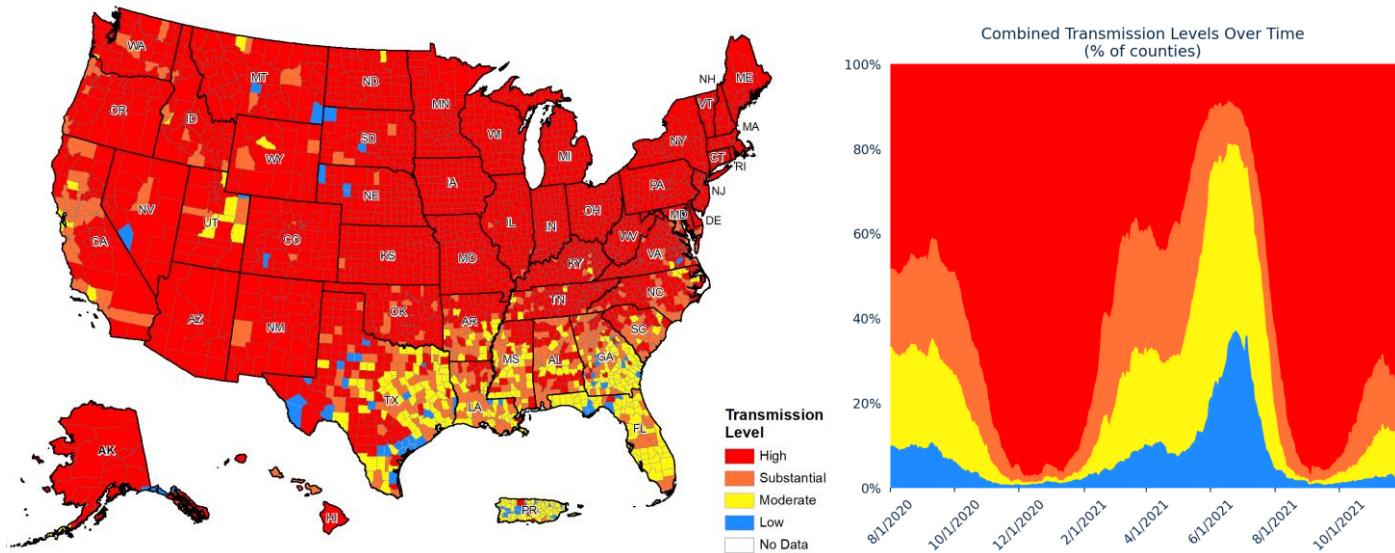
**Deaths:** County-level data are from a CDC managed aggregate county dataset compiled from state and local health departments; therefore, the values may not match those reported directly by the state. State values are aggregated data provided by the states to the CDC. Between 6/5 and 8/18, Florida was not updating their county deaths data; therefore no county death data are available for this time frame. As of 8/10/2021, Florida changed their method of reporting COVID-19 deaths at the state level and will report on the day of incident, not the day of report, which could result in a fluctuation in the number of deaths from recent weeks due to delayed reporting. As of 6/30, Nebraska was no longer updating their state dashboard and since 5/26, Nebraska was reporting by Local Health Department instead of county; therefore, between 5/25 and 9/1 no county case and death data are available. As of 9/21, Nebraska began providing county case and death data directly to CDC, with daily data going back to 9/2. As of 3/2/2021, Ohio changed their method of reporting COVID-19 deaths and will report deaths on the day of death, not the day of report, which could result in a fluctuation in the number of deaths from recent weeks due to delayed reporting. As of 10/20/2021, Oklahoma changed their method of reporting COVID-19 deaths to include provisional deaths, which could result in a higher number of deaths in recent weeks due to delayed reporting. Puerto Rico is shown at the territory level as deaths are not reported at the municipio level. The week one month before is from 10/20 to 10/26; the week two months before is from 9/22 to 9/28; the week three months before is from 8/25 to 8/31. Due to technical issues, county-level deaths in Oklahoma have not updated in the last week. Due to the Thanksgiving holiday, Wyoming is not updating deaths for the week of 11/22.

**METHODS:** Details available on last two pages of report.



# National Picture: Community Transmission

## COMMUNITY TRANSMISSION BY COUNTY



## COUNTIES BY COMMUNITY TRANSMISSION INDICATOR

CASES PER 100K	0 TO 9	10 TO 49	50 TO 99	100 +
# OF COUNTIES (CHANGE)	103 (↓18)	370 (↓26)	421 (↓62)	2326 (↑106)
% OF COUNTIES (CHANGE)	3.2% (↓0.6%)	11.5% (↓0.8%)	13.1% (↓1.9%)	72.2% (↑3.3%)
TEST POSITIVITY	0.0% TO 4.9%	5.0% TO 7.9%	8.0% TO 9.9%	10.0% +
# OF COUNTIES (CHANGE)	1005 (↓31)	596 (↑12)	304 (↓20)	1315 (↑39)
% OF COUNTIES (CHANGE)	31.2% (↓1.0%)	18.5% (↑0.4%)	9.4% (↓0.6%)	40.8% (↑1.2%)

## COUNTIES BY COMBINED TRANSMISSION LEVEL

CATEGORY	LOW TRANSMISSION BLUE	MODERATE TRANSMISSION YELLOW	SUBSTANTIAL TRANSMISSION ORANGE	HIGH TRANSMISSION RED
# OF COUNTIES (CHANGE)	71 (↓16)	351 (↓18)	398 (↓67)	2400 (↑101)
% OF COUNTIES (CHANGE)	2.2% (↓0.5%)	10.9% (↓0.6%)	12.4% (↓2.1%)	74.5% (↑3.1%)

### DATA SOURCES

Maps and figures reflect 7-day average of data from 11/17-11/23 (cases), 11/15-11/21 (tests).

**Note:** Most recent days may have incomplete reporting.

**Cases:** County-level data are from a CDC managed aggregate county dataset compiled from state and local health departments; therefore, the values may not match those reported directly by the state. Data are through 11/23/2021.

**Testing:** Combination of CELR (COVID-19 Electronic Lab Reporting) state health department-reported data and HHS Protect laboratory data (provided directly to Federal Government from public health labs, hospital labs, and commercial labs). Data are through 11/21/2021. As of 8/31/2021, Washington has been experiencing technical issues. As a result, test positivity and test volume may be incomplete.

**County Percentages:** Based on a denominator of 3,220 county/county-equivalents, including states, the District of Columbia, and Puerto Rico municipalities.

**Combined Transmission Level:** If the two indicators suggest different transmission levels, the higher level is selected. Previous week transmission levels are computed based on current data. See [CDC COVID Data Tracker](#).

**METHODS:** Details available on last two pages of report.



# DATA SOURCES & METHODS

## STATE PROFILE REPORT | 11.24.2021

- Some dates may have incomplete data due to delays and/or differences in state reporting. Data may be backfilled over time, resulting in week-to-week changes between reports. It is critical that states provide as up-to-date data as possible. Figures and values may also differ from state reports due to differing methodologies. For more information, see [CDC COVID Data Tracker](#).
- All population values are vintage 2019 US Census data.
- Cases and Deaths:** County-level data are from a CDC-managed aggregate county dataset compiled from state and local health departments; therefore, the values may not match those reported directly by the state. State values are aggregated data provided by the states to the CDC. Data and week-on-week changes are as of 11:23 EST on 11/24/2021. Cases and deaths are generally shown by date of report. Some states periodically adjust their past data with CDC to show it by case date and death date, as determined by the state. Between adjustments, new cases and deaths continue to be shown by date of report. This can potentially lead to over-estimates of the week-on-week increases in cases or deaths. As of October 25, 2021, CDC no longer spreads aggregate COVID-19 case and death counts evenly over non-reporting days (i.e., smoothing), to avoid under-reporting of weekend averages.
  - Between 6/5 and 8/18, Florida was not updating their county death data; therefore no county death data are available for this time frame. As of 8/10/2021, Florida changed their method of reporting COVID-19 deaths at the state level and will report deaths on the day of incident, not the day of report, which could result in a fluctuation in the number of deaths from recent weeks due to delayed reporting. As of 6/30, Nebraska was no longer updating their state dashboard and since 5/26, Nebraska was reporting by Local Health Department instead of county; therefore, between 5/25 and 9/1 no county case and death data are available. As of 9/21/2021, Nebraska began providing county case and death data directly to CDC, with daily data going back to 9/2. As of 3/2/2021, Ohio changed their method of reporting COVID-19 deaths and will report deaths on the day of death, not the day of report, which could result in a fluctuation in the number of deaths from recent weeks due to delayed reporting. As of 10/20/2021, Oklahoma changed their method of reporting COVID-19 deaths to include provisional deaths, which could result in a higher number of deaths in recent weeks due to delayed reporting. Puerto Rico deaths are shown at the territory level as deaths are not reported at the municipio level. Due to technical issues, county-level deaths in Oklahoma have not updated in the last week. Due to the Thanksgiving holiday, Wyoming is not updating deaths for the week of 11/22.
  - Historical reports of cases and deaths — for which backfill dates are not available — that exceed 1% of the total new cases or deaths reported in the US that day have been excluded from state daily and weekly trends. However, these are still present in county-level data. Historical reports in the last two weeks (11/10/21 – 11/23/21) are:
    - Kentucky cases: 123 on 11/23
    - Michigan deaths: 88 on 11/10; 43 on 11/12; 27 on 11/15; 177 on 11/17; 71 on 11/19; and 32 on 11/22
    - Mississippi deaths: 12 on 11/15; 1 on 11/17; 3 on 11/18; 10 on 11/22; and 9 on 11/23
    - Missouri cases: 10,640 on 11/18
    - Missouri deaths: 2,780 on 11/18
    - Pennsylvania cases: 1,667 on 11/10 and 15,288 on 11/13
    - Puerto Rico cases: 443 on 11/11
    - Puerto Rico deaths: 11 on 11/11
    - Texas cases: 125 on 11/10; 147 on 11/11; 145 on 11/12; 83 on 11/13; 61 on 11/14; 9 on 11/15; 59 on 11/16; 55 on 11/17; 44 on 11/18; 100 on 11/19; 81 on 11/20; 490 on 11/21; 50 on 11/22; and 126 on 11/23
- Testing:** The data presented represent viral COVID-19 laboratory diagnostic and screening test results — not individual people — and exclude antibody and antigen tests, unless stated otherwise. The term Nucleic Acid Amplification Test (NAAT) includes RT-PCR and other testing methods, which were always included in the testing data. CELR (COVID-19 Electronic Lab Reporting) state health department-reported data are used to describe county-level viral COVID-19 NAAT result totals when information is available on patients' county of residence or healthcare providers' practice location. HHS Protect laboratory data (provided directly to Federal Government from public health labs, hospital labs, and commercial labs) are used otherwise. Because the data are deidentified, total NAATs are the number of tests performed, not the number of individuals tested. NAAT positivity rate is the number of positive tests divided by the number of tests performed and resulted. For test positivity, last week data are from 11/15 to 11/21; previous week data are from 11/8 to 11/14; the week one month before data are from 10/18 to 10/24. For number of tests, last week data are from 11/11 to 11/17; previous week data are from 11/4 to 11/10. HHS Protect data are recent as of 10:40 EST on 11/24/2021. Testing data are inclusive of everything received and processed by the CELR system as of 19:00 EST on 11/23/2021. As of 8/31/2021, Washington has been experiencing technical issues. As a result, test positivity and test volume may be incomplete.
- Hospitalizations:** Unified Hospitals Dataset in HHS Protect. These data exclude psychiatric, rehabilitation, and religious non-medical hospitals. In addition, hospitals explicitly identified by states/regions as those from which we should not expect reports were excluded from the percent reporting figure. The data presented represents raw data provided; we are working diligently with state liaisons to improve reporting consistency. Data are recent as of 10:48 EST on 11/24/2021.
- Hospital PPE:** Unified Hospitals Dataset in HHS Protect. This figure may differ from state data due to differences in hospital lists and reporting between federal and state systems. These data exclude psychiatric, rehabilitation, and religious non-medical hospitals. Hospitals explicitly identified by states/regions as those from which we should not expect reports were excluded from the percent reporting figure. Data are recent as of 10:38 EST on 11/24/2021.
- State, County, and Metro Area Community Transmission Levels**
  - High Transmission:** Those states, CBSAs, and counties that during the last week reported 100 or more cases per 100,000 population or a lab test positivity at or above 10.0%.
  - Substantial Transmission:** Those states, CBSAs, and counties that during the last week reported from 50 to 99 cases per 100,000 population or a lab test positivity from 8.0% to 9.9%.
  - Moderate Transmission:** Those states, CBSAs, and counties that during the last week reported from 10 to 49 cases per 100,000 population or a lab test positivity from 5.0% to 7.9%.
  - Low Transmission:** Those states, CBSAs, and counties that during the last week reported from 0 to 9 cases per 100,000 population or a lab test positivity from 0.0% to 4.9%.
  - If the two indicators suggest different transmission levels, the higher level is selected. Previous week transmission levels are computed based on current data. See [CDC COVID Data Tracker](#).
- Shortages:** Unified Hospitals Dataset in HHS Protect. These data exclude psychiatric, rehabilitation, and religious non-medical hospitals. Includes hospitals currently reporting a staffing shortage. Low supply is defined as a hospital reporting they are not able to maintain a 3-day supply of N95s, face masks, gloves, gowns, or eye protection. Data are recent as of 10:38 EST on 11/24/2021.
- Vaccinations:** [CDC COVID Data Tracker](#). Data includes the Moderna, Pfizer BioNTech, and J&J/Janssen COVID-19 vaccines and reflects current data available as of 12:06 EST on 11/24/2021. Data last updated 06:00 EST on 11/24/2021. Persons who are fully vaccinated include those who have received both doses of the Moderna or Pfizer-BioNTech vaccine as well as those who have received one dose of the J&J/Janssen vaccine. Allocations are made pro rata (equal based on population) from which jurisdictions are then to order. COVID-19 vaccines available in the U.S. are authorized only for persons ≥5 years of age (Pfizer-BioNTech) or ≥18 years of age (Moderna and J&J/Janssen). Population denominators reflect the subset of the population of the corresponding age range when specified (e.g., 12+, 12-17, 18+, or 65+), otherwise the total population is used. The count of people who received a booster dose includes anyone who is fully vaccinated and has received another dose of COVID-19 vaccine since August 13, 2021. This includes people who received booster doses and people who received additional doses. CDC has capped the percent of population coverage metrics at 99.9%. These metrics could be greater than 99.9% for multiple reasons, including census denominator data not including all individuals that currently reside in the county (e.g., part time residents) or potential data reporting errors. The following states have ≤80% completeness reporting vaccinations by county, which may result in underestimates of vaccination data for counties: VT (74%), WV (60%), GA (58%), and HI (0%).
- Variants:** Data from [CDC COVID Data Tracker](#). Variant proportions are based on representative CDC sequence data (NS3 + CDC-funded contract sequencing) collected over a 4-week period ending October 30, 2021 for states with at least 300 sequences. Proportions are calculated using empirical (unweighted) data, which are subject to change over time and will be updated as more data become available. Proportions of variants do not represent the total number that may be circulating in the United States and may not match cases reported by states, territories, tribes, and local officials. For states and jurisdictions not listed, CDC has insufficient genomic surveillance data for the specified time period. Data updated by 19:00 ET on 11/23. Data pulled 11:22 EST on 11/24/2021.



# DATA SOURCES & METHODS

STATE PROFILE REPORT | 11.24.2021

Color threshold values are rounded before color classification

Metric	Dark Green	Light Green	Yellow	Orange	Light Red	Red	Dark Red	Darkest Red
New cases per 100,000 population per week	≤4	5 – 9	10 – 49	50 – 99	100 – 199	200 – 499	500 – 749	≥750
Percent change in new cases per 100,000 population	≤-26%	-25% – -11%	-10% – 0%	1% – 10%	11% – 99%	100% – 999%	≥1000%	
Diagnostic test result positivity rate	≤2.9%	3.0% – 4.9%	5.0% – 7.9%	8.0% – 9.9%	10.0% – 14.9%	15.0% – 19.9%	20.0% – 24.9%	≥25.0%
Change in test positivity	≤-2.1%	-2.0% – -0.6%	-0.5% – 0.0%	0.1% – 0.5%	0.6% – 2.0%		≥2.1%	
Total diagnostic tests resulted per 100,000 population per week	≥5000	3000 – 4999	2000 – 2999	1000 – 1999	500 – 999		≤499	
Percent change in tests per 100,000 population	≥26%	11% – 25%	1% – 10%	-10% – 0%	-25% – -11%		≤-26%	
COVID-19 deaths per 100,000 population per week	0.0		0.1 – 0.9	1.0 – 1.9	2.0 – 4.9	5.0 – 9.9	10.0 – 14.9	≥15.0
Percent change in deaths per 100,000 population	≤-26%	-25% – -11%	-10% – 0%	1% – 10%	11% – 25%		≥26%	
Confirmed new COVID-19 hospital admissions per 100 beds	≤1.0	1.1 – 3.0	3.1 – 5.0	5.1 – 10.0	10.1 – 15.0	15.1 – 20.0	≥20.1	
Change in new COVID-19 hospital admissions per 100 beds	≤-26%	-25% – -11%	-10% – 0%	1% – 10%	11% – 25%		≥26%	
Percent of hospitals with supply/staff shortages	≤9%		10% – 19%	20% – 29%	30% – 39%		≥40%	
Change in percent of hospitals with supply/staff shortages	≤-10%	-9% – -5%	-4% – 0%	1% – 4%	5% – 9%		≥10%	
Percent of Population Fully Vaccinated (State Level)	0.0 – 49.9%		50.0 – 59.9%		60.0 – 69.9%		70.0 – 79.9%	
							≥80.0%	