



MISSOURI

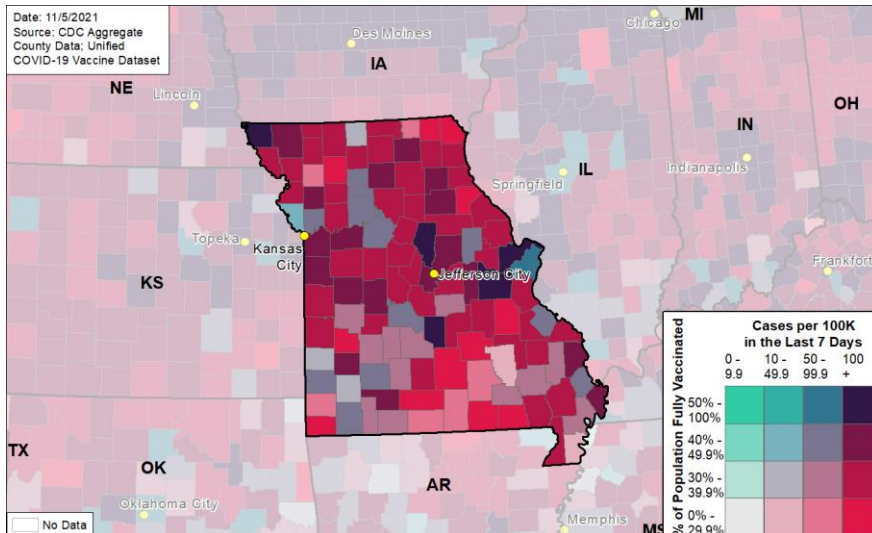
STATE SYNOPSIS

	LAST WEEK	CHANGE FROM PREVIOUS WEEK
RATE OF NEW COVID-19 CASES PER 100,000	117	+5%
NUCLEIC ACID AMPLIFICATION TEST (NAAT) POSITIVITY RATE	6.2%	+0.0%
NEW CONFIRMED COVID-19 HOSPITAL ADMISSIONS / 100 BEDS	3.7	-1%
RATE OF NEW COVID-19 DEATHS PER 100,000	2.7	+65%
COMMUNITY TRANSMISSION LEVEL	HIGH TRANSMISSION	
PEOPLE RECEIVED AT LEAST 1 DOSE	3,508,567 people	57.2% of total pop
PEOPLE 18+ RECEIVED AT LEAST 1 DOSE	3,295,029 people	69.1% of 18+ pop
PEOPLE FULLY VACCINATED	3,066,966 people	50.0% of total pop
PEOPLE 18+ FULLY VACCINATED	2,886,677 people	60.6% of 18+ pop
PEOPLE 65+ RECEIVED BOOSTER	250,573 people	29.2% of fully vaccinated 65+ pop

SARS-CoV-2 Variants of Concern

- The following proportions of variants of concern have been identified in [Missouri](#): Delta (B.1.617.2, AY.*) 98.8%

COVID-19 Reported Cases per 100,000 Population (last 7 days) and Percent of Total Population Fully Vaccinated



As of 10/25/21, CDC no longer smooths the number of COVID-19 cases and deaths by jurisdiction; starting 11/1/21, several states shifted to the use of report date. Both of these changes may result in fluctuations of daily and/or week-on-week changes.

The purpose of this report is to develop a shared understanding of the current status of the pandemic at the national, regional, state, and local levels. We recognize that data at the state level may differ from that available at the federal level. Our objective is to use consistent data sources and methods that allow for comparisons to be made across localities. We appreciate your continued support in identifying data discrepancies and improving data completeness and sharing across systems. We look forward to your feedback. All inquiries and requests for information should be directed to <https://www.cdc.gov/des/ContactUs/Form>.





MISSOURI

STATE PROFILE REPORT | 11.05.2021

	STATE, % CHANGE FROM PREVIOUS WEEK			
	STATE	WEEK	FEMA/HHS REGION	UNITED STATES
NEW COVID-19 CASES (RATE PER 100,000)	7,160 (117)	+5%	26,482 (187)	498,787 (150)
NUCLEIC ACID AMPLIFICATION TEST (NAAT) POSITIVITY RATE	6.2%	+0.0%*	8.6%	4.9%
TOTAL NAAT VOLUME (TESTS PER 100,000)	90,950** (1,482**)	-24%**	199,155** (1,408**)	9,383,589** (2,826**)
NEW COVID-19 DEATHS (RATE PER 100,000)	167 (2.7)	+65%	421 (3.0)	7,716 (2.3)
CONFIRMED NEW COVID-19 HOSPITAL ADMISSIONS (RATE PER 100 BEDS)	550 (3.7)	-1% (-1%)	1,740 (5.1)	35,177 (5.1)
NUMBER OF HOSPITALS WITH SUPPLY SHORTAGES (PERCENT)	7 (6%)	+0%	16 (3%)	283 (5%)
NUMBER OF HOSPITALS WITH STAFF SHORTAGES (PERCENT)	31 (26%)	+7%	87 (18%)	915 (17%)
PEOPLE 12+ INITIATING VACCINATION (PERCENT OF POPULATION)	28,271 (0.5%)	+11.3%	67,442 (0.6%)	2,028,718 (0.7%)
PEOPLE 12-17 INITIATING VACCINATION (PERCENT OF POPULATION)	1,256 (0.3%)	-3.4%	3,363 (0.3%)	107,644 (0.4%)
PEOPLE 18+ INITIATING VACCINATION (PERCENT OF POPULATION)	27,015 (0.6%)	+12.1%	64,079 (0.6%)	1,921,074 (0.7%)
PEOPLE 65+ RECEIVING BOOSTER DOSE	56,596	+17.8%	158,135	3,113,071

* Indicates absolute change in percentage points.

** Due to delayed reporting, this figure may underestimate total diagnostic tests and week-on-week changes in diagnostic tests.

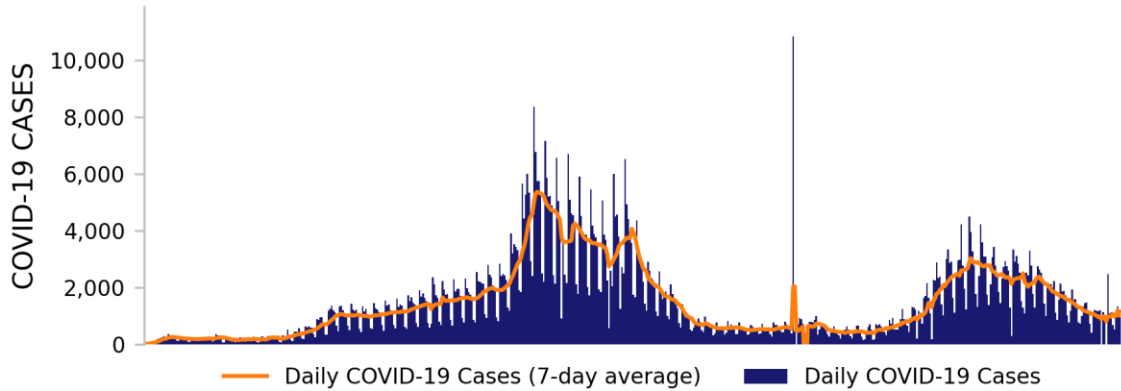
DATA SOURCES**Note:** Some dates may have incomplete data due to delays in reporting. Data may be backfilled over time, resulting in week-to-week changes.**Cases and Deaths:** State values are aggregated data provided by the states to the CDC. Historical reports of cases and deaths exceeding 1% of the total new cases or deaths reported in the US that day have been excluded. Data are through 11/4/2021; previous week is from 10/22 to 10/28.**Testing:** CELR (COVID-19 Electronic Lab Reporting) state health department-reported data. The term Nucleic Acid Amplification Test (NAAT) includes RT-PCR and other testing methods. Test positivity through 11/2/2021; previous week is from 10/20 to 10/26. Test volume through 10/29/2021; previous week is from 10/16 to 10/22.**Admissions:** Unified Hospitals Dataset in HHS Protect. Data are through 11/3, previous week is from 10/21 to 10/27.**Shortages:** Unified Hospitals Dataset in HHS Protect. Values presented show the latest reports from hospitals in the week ending 11/3/2021 for staffing and the week ending 11/3/2021 for supplies.**Vaccinations:** [CDC COVID Data Tracker](#). Data includes the Moderna, Pfizer BioNTech, and J&J/Janssen COVID-19 vaccines and reflects current data available as of 13:12 EDT on 11/05/2021. Data last updated 06:00 EDT on 11/05/2021. People initiating vaccination include those who have received the first dose of the Moderna or Pfizer-BioNTech vaccine as well as those who have received one dose of the J&J/Janssen vaccine. Population denominators reflect the subset of the population of the corresponding age range.**METHODS:** Details available on last two pages of report.



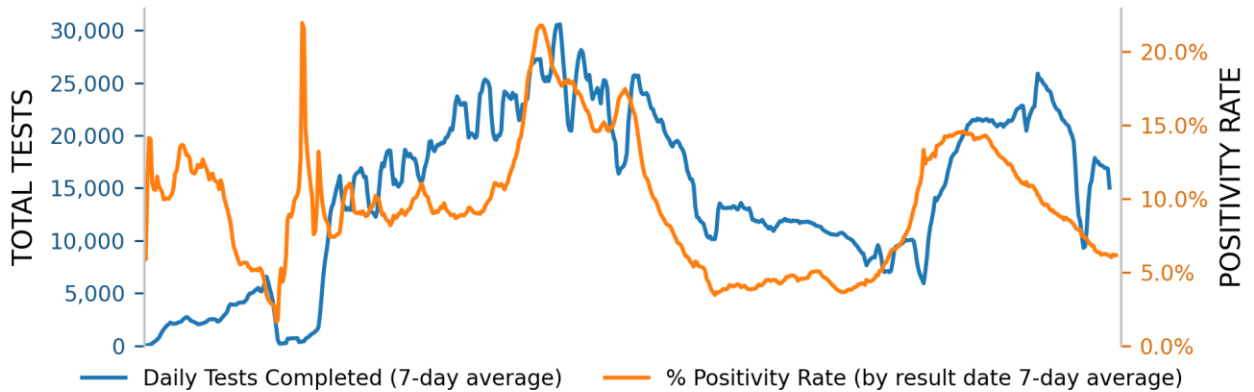
MISSOURI

STATE PROFILE REPORT | 11.05.2021

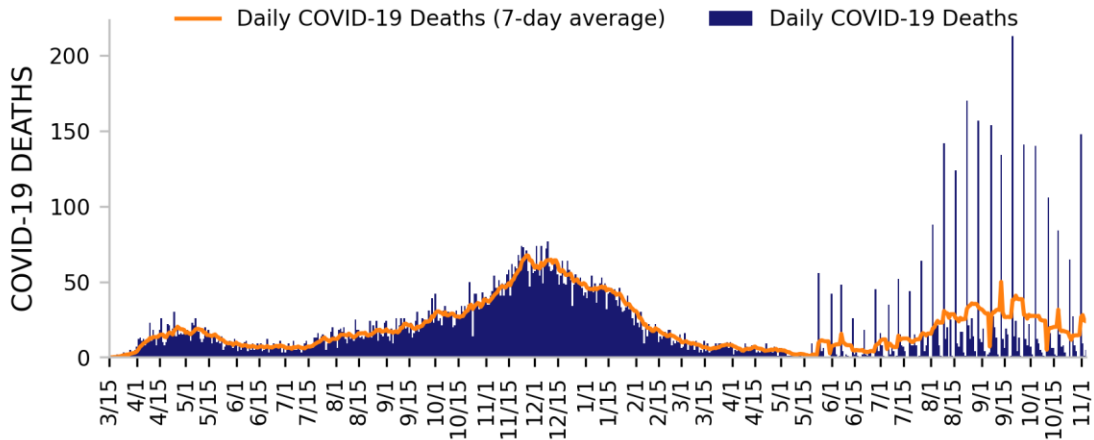
NEW CASES



TESTING



NEW DEATHS



DATA SOURCES

Note: Some dates may have incomplete data due to delays in reporting. Data may be backfilled over time, resulting in week-to-week changes. All three trends share the same horizontal axis shown on the bottom figure.

Cases and Deaths: State values are aggregated data provided by the states to the CDC. Historical cases and deaths exceeding 1% of the total new cases or deaths reported in the US that day have been excluded. Data are through 11/4/2021.

Testing: CELR (COVID-19 Electronic Lab Reporting) state health department-reported data. Test positivity through 11/2/2021. Test volume through 10/29/2021.

METHODS: Details available on last two pages of report.



MISSOURI

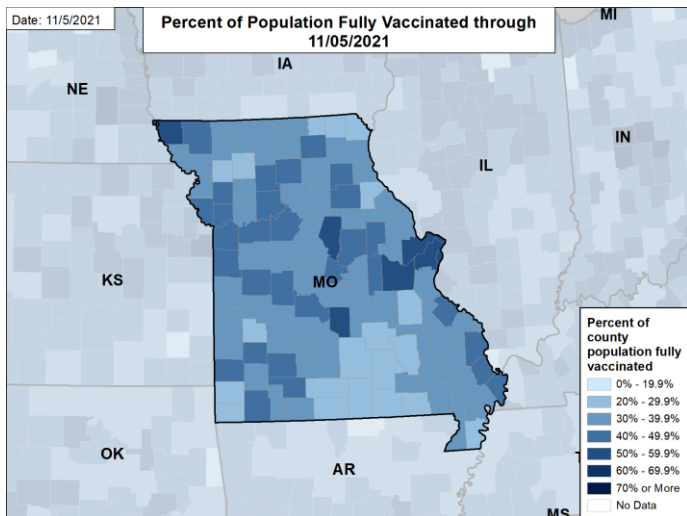
STATE PROFILE REPORT | 11.05.2021

STATE VACCINATION SUMMARY

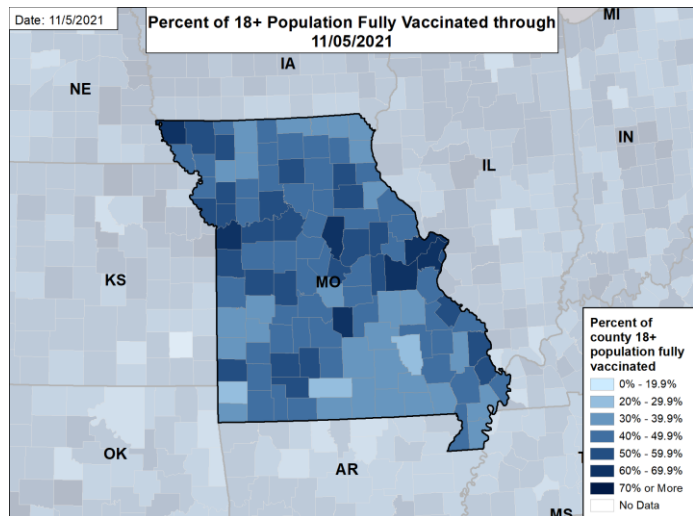
DOSES DELIVERED	8,668,875 141,246 per 100k	DOSES ADMINISTERED	6,887,661 112,224 per 100k
------------------------	-------------------------------	---------------------------	-------------------------------

	RECEIVED AT LEAST ONE DOSE	FULLY VACCINATED	RECEIVED BOOSTER DOSE
ALL PEOPLE	3,508,567 57.2% of total population	3,066,966 50.0% of total population	393,655 12.8% of fully vaccinated total pop
PEOPLE 12-17	213,120 45.5% of 12-17 population	180,214 38.4% of 12-17 population	N/A
PEOPLE 18+	3,295,029 69.1% of 18+ population	2,886,677 60.6% of 18+ population	393,226 13.6% of fully vaccinated 18+ pop
PEOPLE 65+	954,447 89.9% of 65+ population	856,806 80.7% of 65+ population	250,573 29.2% of fully vaccinated 65+ pop

PERCENT OF POPULATION FULLY VACCINATED



PERCENT OF 18+ POPULATION FULLY VACCINATED



DATA SOURCES

County reporting completeness for Missouri is 91.1%.

Vaccinations: [CDC COVID Data Tracker](#). Data includes the Moderna, Pfizer BioNTech, and J&J/Janssen COVID-19 vaccines and reflects current data available as of 13:12 EDT on 11/05/2021. Data last updated 06:00 EDT on 11/05/2021. Persons who are fully vaccinated include those who have received both doses of the Moderna or Pfizer-BioNTech vaccine as well as those who have received one dose of the J&J/Janssen vaccine. Allocations are made pro rata (equal based on population) from which jurisdictions are then to order.

METHODS: Details available on last two pages of report.

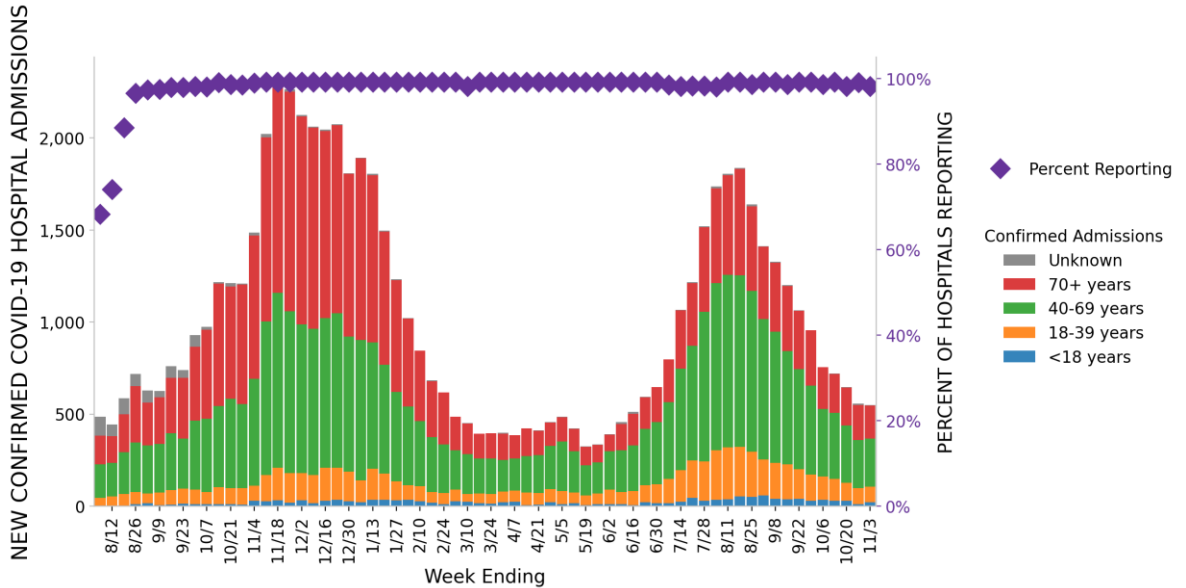


MISSOURI

STATE PROFILE REPORT | 11.05.2021

120 hospitals are expected to report in Missouri

HOSPITAL ADMISSIONS



HOSPITAL PPE SUPPLIES



DATA SOURCES

Hospitalizations: Unified Hospitals Dataset in HHS Protect. These data exclude psychiatric, rehabilitation, and religious non-medical hospitals. Hospitals explicitly identified by states/regions as those from which we should not expect reports were excluded from the percent reporting figure. Data are through 11/3/2021.

PPE: Unified Hospitals Dataset in HHS Protect. These data exclude psychiatric, rehabilitation, and religious non-medical hospitals. Values presented show the latest reports from hospitals in the week ending 11/3/2021.

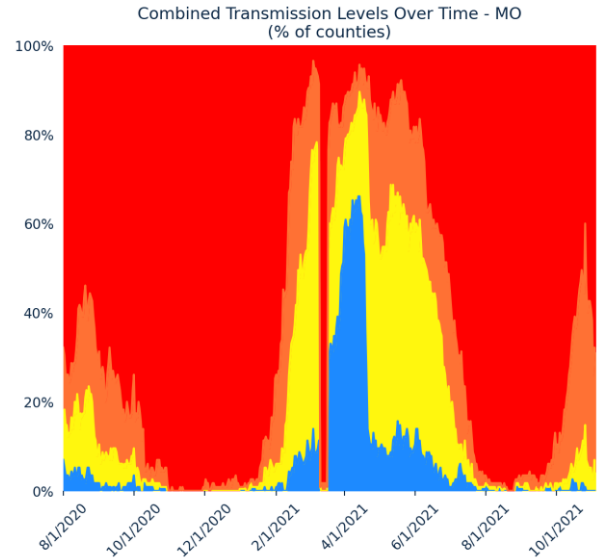
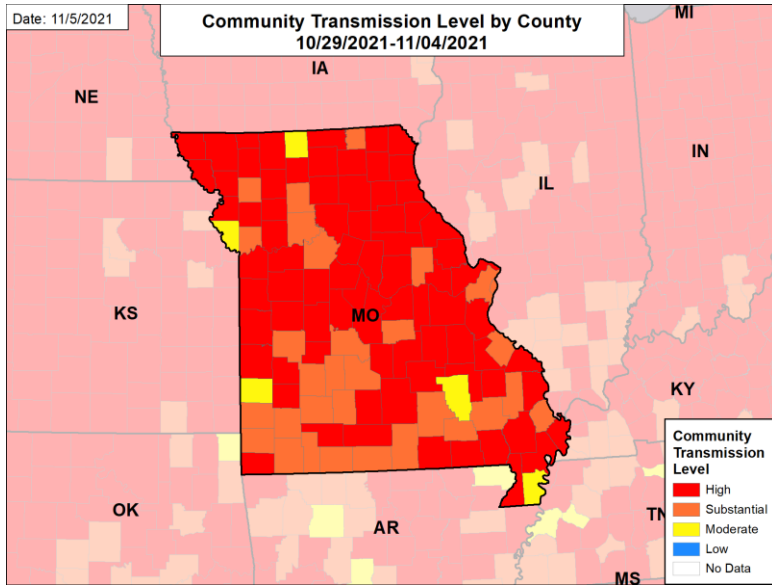
METHODS: Details available on last two pages of report.



MISSOURI

STATE PROFILE REPORT | 11.05.2021

COMMUNITY TRANSMISSION BY COUNTY AND METRO AREA



COUNTIES AND METRO AREAS BY COMBINED TRANSMISSION LEVEL

CATEGORY	LOW TRANSMISSION BLUE	MODERATE TRANSMISSION YELLOW	SUBSTANTIAL TRANSMISSION ORANGE	HIGH TRANSMISSION RED
# OF COUNTIES (CHANGE)	0 (0)	5 (↓2)	31 (↓8)	79 (↑10)
# OF METRO AREAS (CHANGE)	0 (0)	0 (0)	7 (↓2)	20 (↑2)

All Yellow Counties: Platte, Reynolds, Pemiscot, Barton, Mercer

All Orange Counties: St. Louis, Greene, St. Louis City, Clay, Jasper, Camden, Howell, Scott, Newton, Taney, Barry, Stone, Webster, Polk, Laclede, Lawrence, Saline, Livingston, Ste. Genevieve, DeKalb, Montgomery, Dallas, Bollinger, Shannon, St. Clair, Maries, Wayne, Carroll, Ozark, Carter, Schuyler

All Orange CBSAs: Springfield, Joplin, West Plains, Sikeston, Branson, Lebanon, Marshall

All Red Counties: Jackson, St. Charles, Jefferson, Cole, Boone, Franklin, Buchanan, Cape Girardeau, Cass, Lincoln, Christian, Callaway, St. Francois, Pulaski, Johnson, Perry, Pettis, Miller, Phelps, Warren, Butler, Nodaway, Marion, Stoddard, Lafayette, Dunklin, McDonald, Osage, Gasconade, Andrew, Morgan, Texas, Wright, Vernon, Ray, Crawford, Washington, Henry, Randolph, Adair, Audrain, Benton, Cedar, Moniteau, Madison, Pike, Bates, Scotland, Cooper, Clinton, Lewis, Dent, Ripley, Macon, New Madrid, Mississippi, Harrison, Douglas, Chariton, Linn, Holt, Ralls, Howard, Sullivan, Grundy, Iron, Oregon, Atchison, Monroe, Hickory, Daviess, Caldwell, Gentry, Knox, Shelby, Clark, Dade, Putnam, Worth

All Red CBSAs: St. Louis, Kansas City, Jefferson City, Columbia, St. Joseph, Cape Girardeau, Farmington, Poplar Bluff, Fort Leonard Wood, Warrensburg, Hannibal, Sedalia, Rolla, Maryville, Kennett, Kirksville, Moberly, Mexico, Quincy, Fort Madison-Keokuk

DATA SOURCES

Maps and figures reflect 7-day average of data from 10/29-11/4 (cases), 10/27-11/2 (tests). Metro areas and counties are listed in order of the total number of cases in the last week from largest to smallest.

Note: Most recent days may have incomplete reporting.

Cases: County-level data are from a CDC managed aggregate county dataset compiled from state and local health departments; therefore, the values may not match those reported directly by the state. Data are through 11/4/2021.

Testing: CELR (COVID-19 Electronic Lab Reporting) state health department-reported data. Data are through 11/2/2021.

Combined Transmission Level: If the two indicators suggest different transmission levels, the higher level is selected. Previous week transmission levels are computed based on current data. See [CDC COVID Data Tracker](#).

METHODS: Details available on last two pages of report.

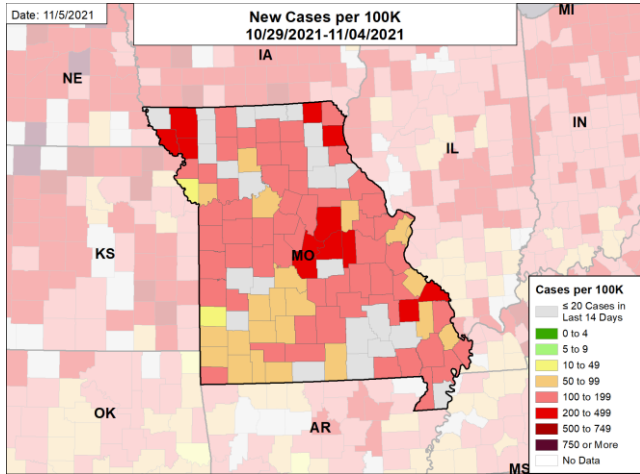


MISSOURI

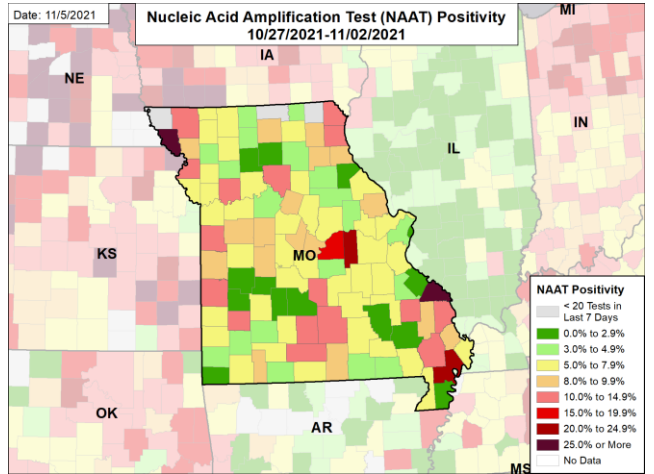
STATE PROFILE REPORT | 11.05.2021

CASE RATES, NAAT POSITIVITY, HOSPITAL ADMISSIONS, AND DEATH RATES

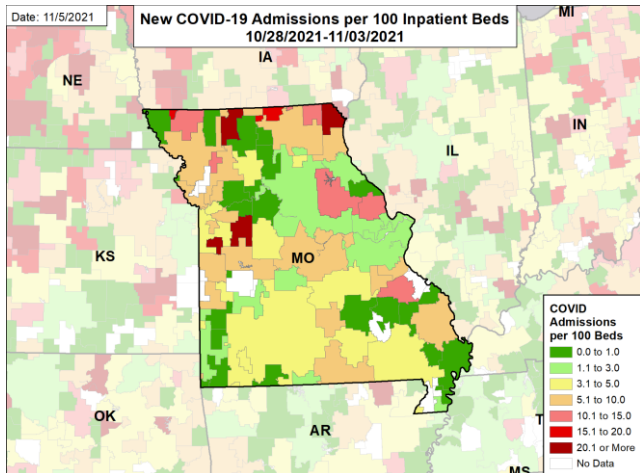
NEW CASES PER 100,000



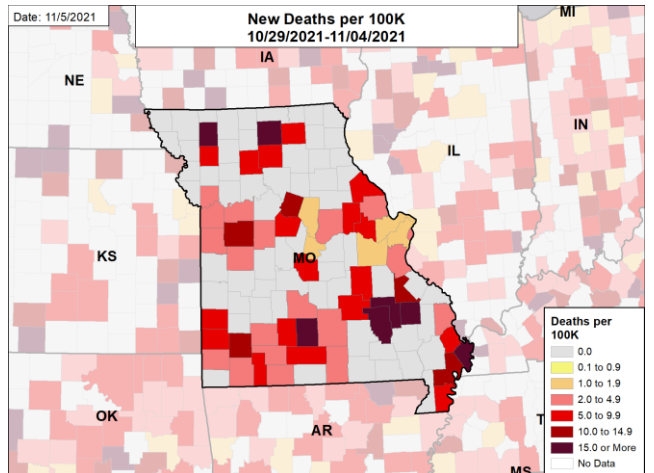
NUCLEIC ACID AMPLIFICATION TEST (NAAT) POSITIVITY



CONFIRMED NEW COVID-19 ADMISSIONS PER 100 INPATIENT BEDS



NEW DEATHS PER 100,000



DATA SOURCES

Note: Some dates may have incomplete data due to delays in reporting. Data may be backfilled over time, resulting in week-to-week changes.

Cases and Deaths: County-level data are from a CDC managed aggregate county dataset compiled from state and local health departments; therefore, the values may not match those reported directly by the state. Data are through 11/4/2021.

Testing: CELR (COVID-19 Electronic Lab Reporting) state health department-reported data. The term Nucleic Acid Amplification Test (NAAT) includes RT-PCR and other testing methods. Data are through 11/2/2021.

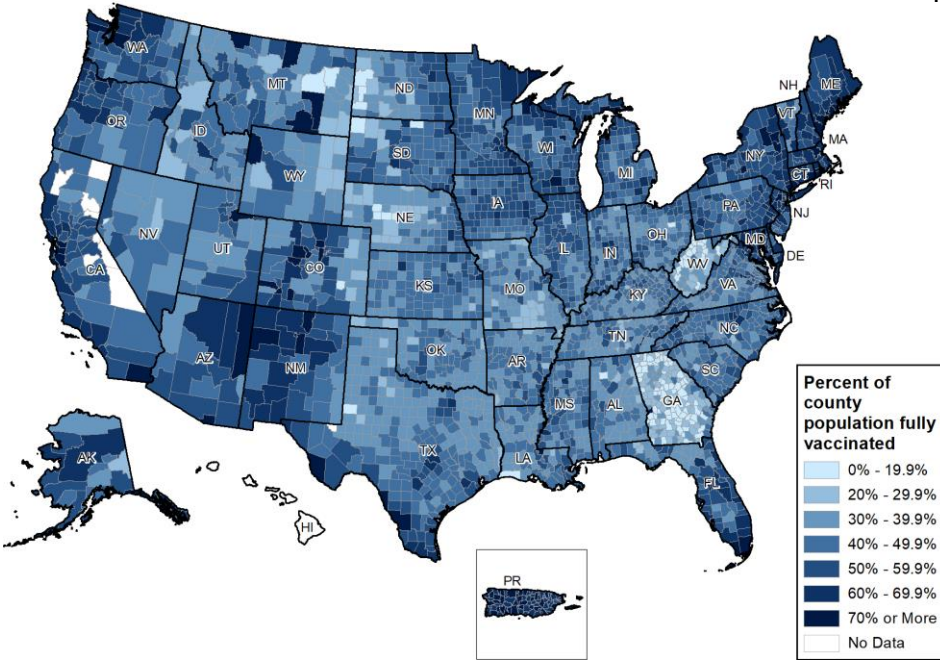
Hospitalizations: Unified Hospitals Dataset in HHS Protect. Totals include only confirmed COVID-19 admissions. HSA indicates Hospital Service Area. Hospitals are assigned to HSA based on zip code where known. In some areas, reports are aggregates of multiple facilities that cross HSA boundaries; in these cases, values are assigned based on the zip code for the aggregate. Data are through 11/3/2021.

METHODS: Details available on last two pages of report.



National Picture: Vaccinations

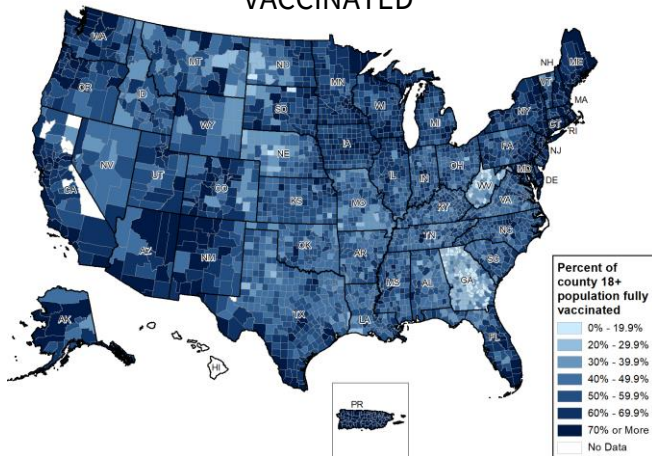
PERCENT OF POPULATION FULLY VACCINATED



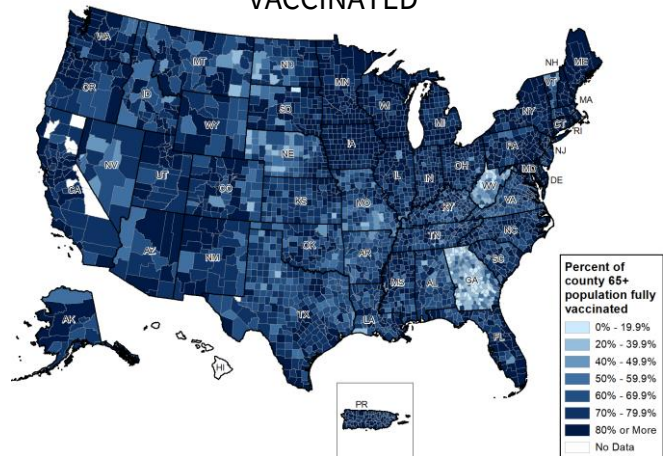
NATIONAL RANKING OF POPULATION FULLY VACCINATED

National Rank	State	National Rank	State
1	PR	27	UT
2	VT	28	MI
3	RI	29	TX
4	CT	30	KS
5	ME	31	AZ
6	MA	32	NV
7	NY	33	SD
8	NJ	34	NC
9	MD	35	AK
10	WA	36	OH
11	VA	37	KY
12	NH	38	MT
13	OR	39	OK
14	DC	40	SC
15	NM	41	IN
16	CO	42	MO
17	CA	43	GA
18	MN	44	AR
19	PA	45	TN
20	IL	46	LA
21	DE	47	ND
22	HI	48	MS
23	FL	49	AL
24	WI	50	WY
25	NE	51	ID
26	IA	52	WV

PERCENT OF 18+ POPULATION FULLY VACCINATED



PERCENT OF 65+ POPULATION FULLY VACCINATED



DATA SOURCES

Vaccinations: CDC COVID Data Tracker. Data includes the Moderna, Pfizer BioNTech, and J&J/Janssen COVID-19 vaccines and reflects current data available as of 13:12 EDT on 11/05/2021. Data last updated 06:00 EDT on 11/05/2021. Persons who are fully vaccinated include those who have received both doses of the Moderna or Pfizer-BioNTech vaccine as well as those who have received one dose of the J&J/Janssen vaccine. Allocations are made pro rata (equal based on population) from which jurisdictions are then to order. The following states have \leq 80% completeness reporting vaccinations by county, which may result in underestimates of vaccination data for counties: VT (74%), WV (60%), GA (58%), and HI (0%). Idaho provides vaccine data only for vaccine recipients who are 18 years and older, in line with state laws. COVID-19 vaccination administration data are unavailable for the Idaho population aged less than 18 years.

METHODS: Details available on last two pages of report.

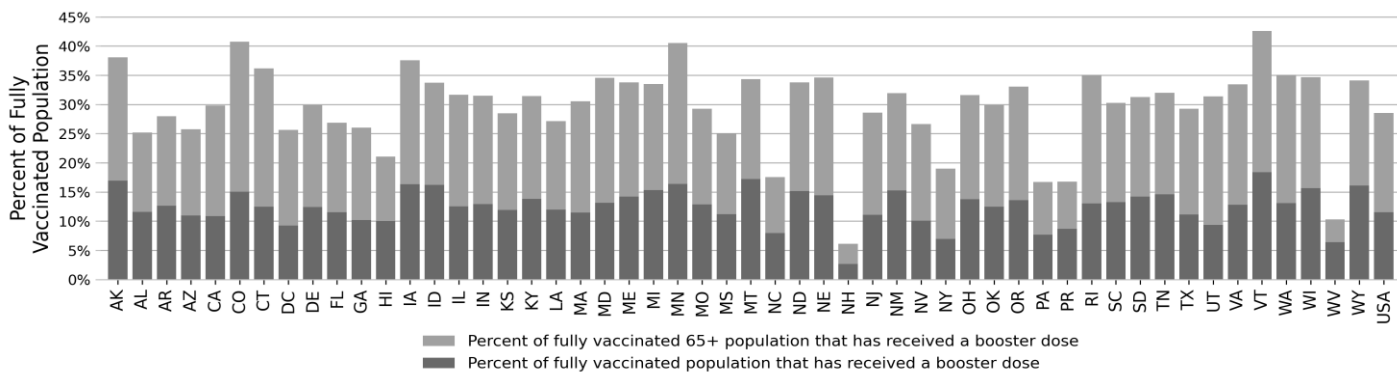
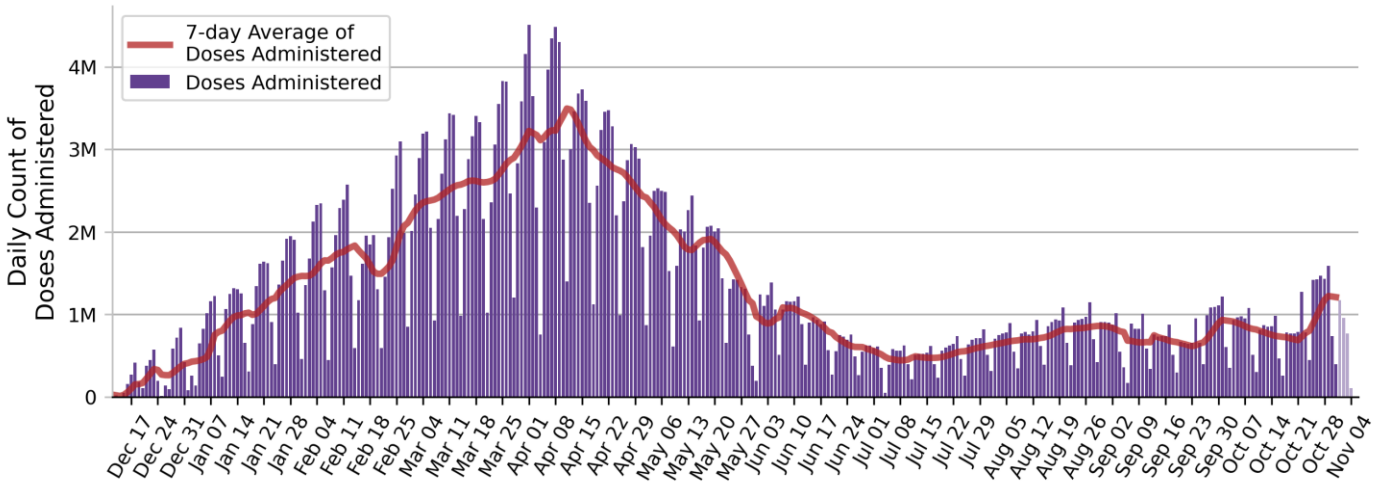


National Picture: Vaccinations

NATIONAL COVID-19 VACCINE SUMMARY AS OF 11/5

DOSES DELIVERED	531,287,645 160,022 per 100k	DOSES ADMINISTERED	428,006,540 128,914 per 100k
PEOPLE RECEIVED AT LEAST ONE DOSE	222,902,939 67.1% of total pop.	PEOPLE FULLY VACCINATED	193,425,862 58.3% of total pop.
PEOPLE 12-17 RECEIVED AT LEAST ONE DOSE	15,026,391 59.5% of 12-17 pop.	PEOPLE 12-17 FULLY VACCINATED	12,673,272 50.2% of 12-17 pop.
PEOPLE 18+ RECEIVED AT LEAST ONE DOSE	207,630,146 80.4% of 18+ pop.	PEOPLE 18+ FULLY VACCINATED	180,616,635 69.9% of 18+ pop.
PEOPLE 65+ RECEIVED AT LEAST ONE DOSE	53,595,063 97.8% of 65+ pop.	PEOPLE 65+ FULLY VACCINATED	46,836,171 85.5% of 65+ pop.
PEOPLE RECEIVED ADDITIONAL DOSE	22,271,357 11.5% of fully vaccinated total pop.	PEOPLE 65+ RECEIVED ADDITIONAL DOSE	13,366,925 28.5% of fully vaccinated 65+ pop.

DAILY NATIONAL COUNT OF VACCINE DOSES ADMINISTERED BY DATE OF ADMINISTRATION



DATA SOURCES

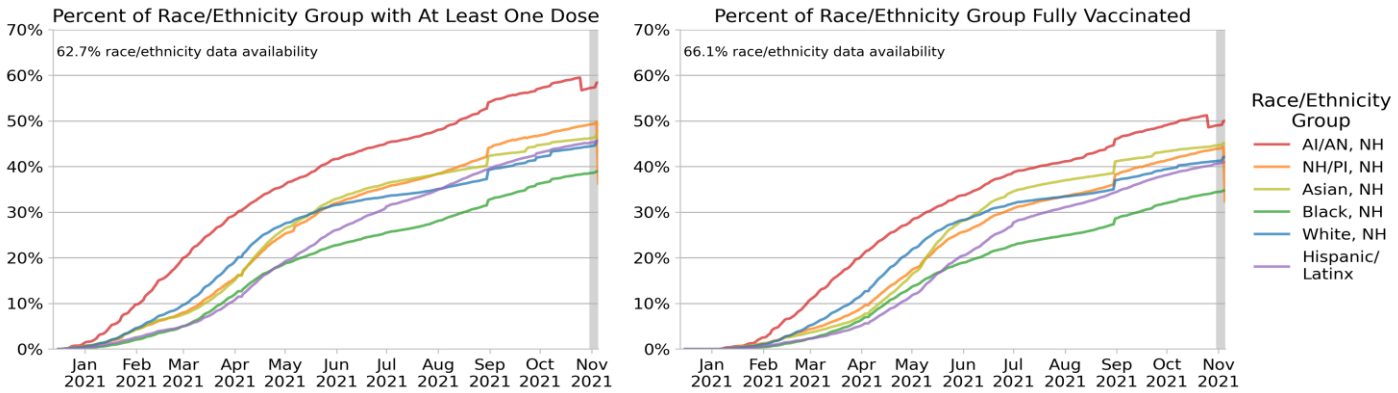
Vaccinations: [CDC COVID Data Tracker](#). Data includes the Moderna, Pfizer BioNTech, and J&J/Janssen COVID-19 vaccines and reflects current data available as of 13:12 EDT on 11/05/2021. Data last updated 06:00 EDT on 11/05/2021. Persons who are fully vaccinated include those who have received both doses of the Moderna or Pfizer-BioNTech vaccine as well as those who have received one dose of the J&J/Janssen vaccine. Allocations are made pro rata (equal based on population) from which jurisdictions are then to order. The count of people who received a booster dose includes anyone who is fully vaccinated and has received another dose of COVID-19 vaccine since August 13, 2021. This includes people who received booster doses and people who received additional doses. Due to delays in reporting, data on doses administered in recent days (as reflected by lighter blue coloring in the Daily National Count figure) may be an underestimate of the actual value.

METHODS: Details available on last two pages of report.

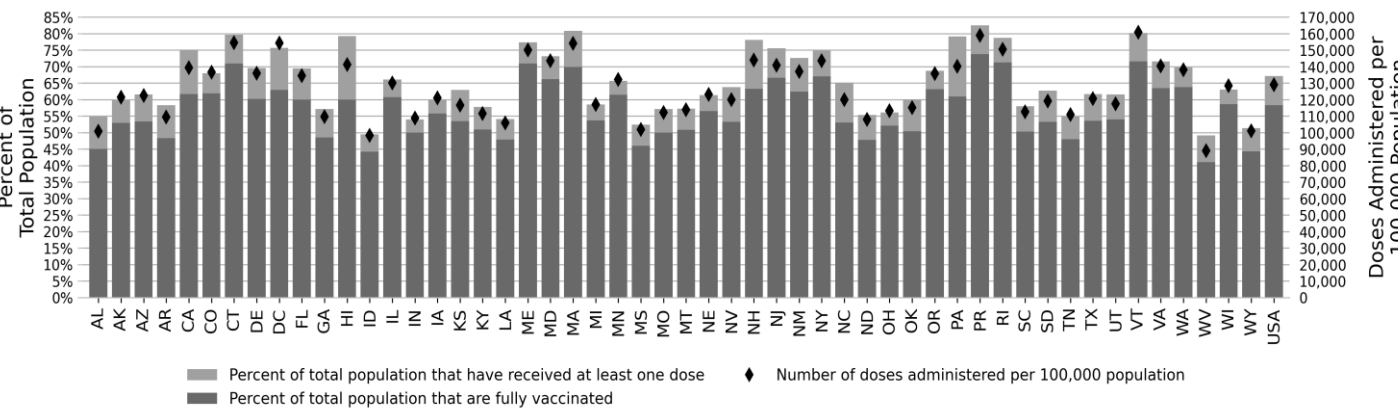
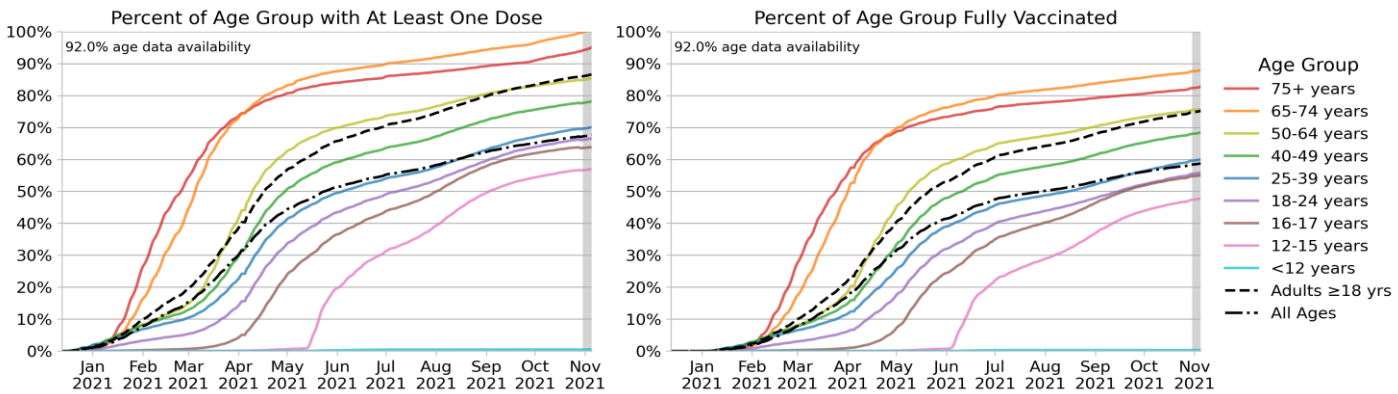


National Picture: Vaccinations

NATIONAL SUMMARY OF VACCINATIONS BY RACE/ETHNICITY



NATIONAL SUMMARY OF VACCINATIONS BY AGE



DATA SOURCES

Vaccinations: CDC COVID Data Tracker. Data includes the Moderna, Pfizer BioNTech, and J&J/Janssen COVID-19 vaccines and reflects current data available as of 13:12 EDT on 11/05/2021. Data last updated 06:00 EDT on 11/05/2021. Persons who are fully vaccinated include those who have received both doses of the Moderna or Pfizer-BioNTech vaccine as well as those who have received one dose of the J&J/Janssen vaccine. Allocations are made pro rata (equal based on population) from which jurisdictions are then to order. Race/Ethnicity data were available for 62.7% receiving at least one dose and 66.1% fully vaccinated. Age data were available for 92.0% receiving at least one dose and 92.0% fully vaccinated. Texas does not report demographic-specific dose number information to CDC, so data for Texas are not represented in demographic trends figures. "NH" stands for Non-Hispanic/Latinx, "AI/AN" stands for American Indian or Alaska Native, and "NH/PI" stands for Native Hawaiian or Pacific Islander.

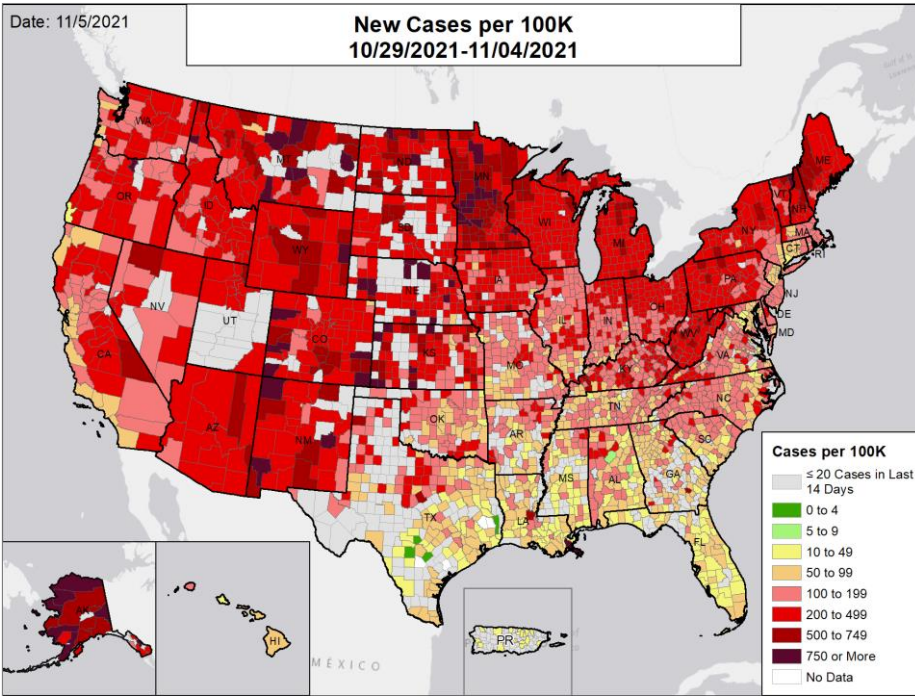
METHODS: Details available on last two pages of report.



National Picture: Cases

NEW CASES PER 100,000

NATIONAL RANKING OF NEW CASES PER 100,000



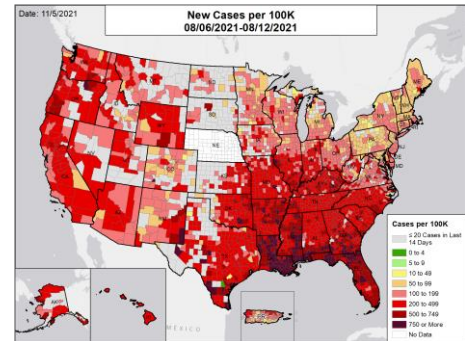
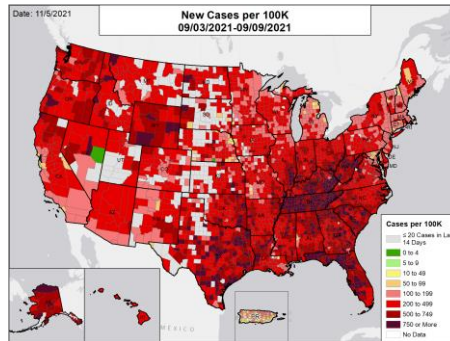
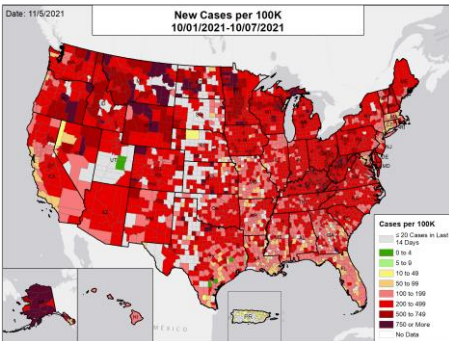
National Rank	State	National Rank	State
1	PR	27	WA
2	FL	28	OR
3	HI	29	KY
4	GA	30	VT
5	LA	31	DE
6	MS	32	KS
7	CT	33	OH
8	MD	34	PA
9	TX	35	IA
10	AL	36	ME
11	DC	37	AZ
12	SC	38	SD
13	NJ	39	WI
14	AR	40	WV
15	TN	41	ID
16	VA	42	NE
17	OK	43	MI
18	CA	44	UT
19	MO	45	NM
20	NC	46	MN
21	MA	47	CO
22	IL	48	WY
23	NY	49	MT
24	RI	50	NH
25	NV	51	ND
26	IN	52	AK

NEW CASES PER 100,000 IN THE WEEK:

ONE MONTH BEFORE

TWO MONTHS BEFORE

THREE MONTHS BEFORE



DATA SOURCES

Note: Some dates may have incomplete data due to delays in reporting. Data may be backfilled over time, resulting in week-to-week changes.

Cases: County-level data are from a CDC managed aggregate county dataset compiled from state and local health departments; therefore, the values may not match those reported directly by the state. State values are aggregated data provided by the states to the CDC. As of 8/10/2021, Florida changed their method of reporting COVID-19 cases at the state level and will report on the day of incident, not the day of report, which could result in a fluctuation in the number of cases from recent weeks due to delayed reporting. As of 6/30, Nebraska was no longer updating their state dashboard and since 5/26, Nebraska was reporting by Local Health Department instead of county; therefore, between 5/25 and 9/1 no county case and death data are available. As of 9/21, Nebraska began providing county case and death data directly to CDC, with daily data going back to 9/2. The week one month before is from 10/1 to 10/7; the week two months before is from 9/3 to 9/9; the week three months before is from 8/6 to 8/12.

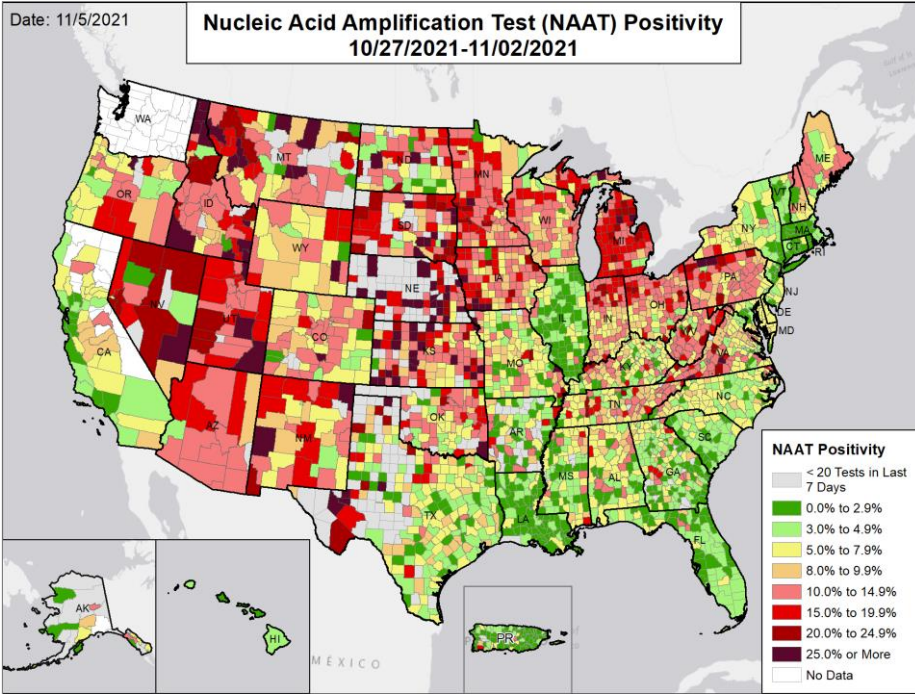
METHODS: Details available on last two pages of report.



National Picture: NAAT Positivity

NUCLEIC ACID AMPLIFICATION TEST (NAAT) POSITIVITY

NATIONAL RANKING OF NAAT POSITIVITY



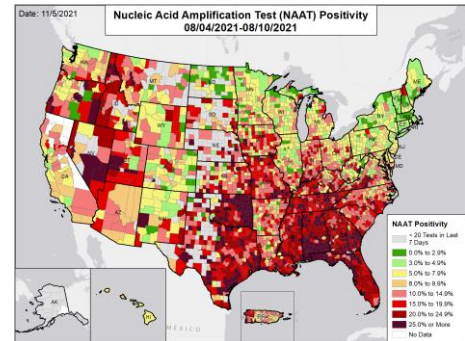
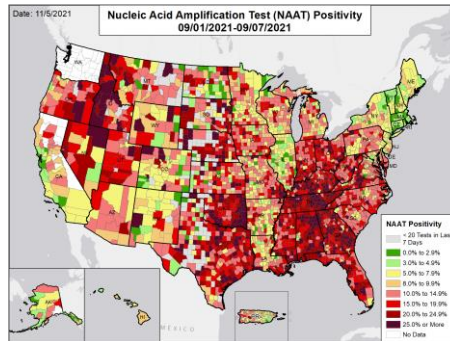
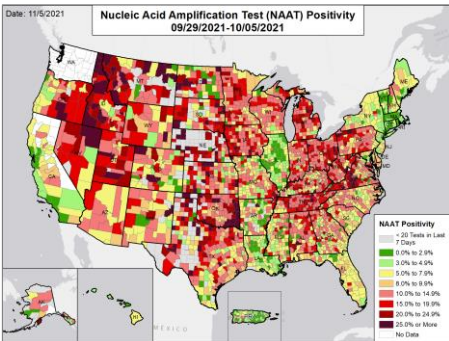
National Rank	State	National Rank	State
1	DC	27	MO
2	MA	28	ME
3	LA	29	TN
4	RI	30	AK
5	PR	31	OK
6	HI	32	KS
7	IL	33	PA
8	CT	34	WI
9	CA	35	ND
10	NY	36	WY
11	FL	37	OH
12	VT	38	CO
13	MD	39	IN
14	NJ	40	WV
15	GA	41	NV
16	SC	42	MN
17	NC	43	MI
18	TX	44	AZ
19	AR	45	NM
20	AL	46	IA
21	MS	47	UT
22	NH	48	NE
23	VA	49	MT
24	DE	50	ID
25	KY	51	SD
26	OR	--	WA

NUCLEIC ACID AMPLIFICATION TEST (NAAT) POSITIVITY IN THE WEEK:

ONE MONTH BEFORE

TWO MONTHS BEFORE

THREE MONTHS BEFORE



DATA SOURCES

Note: Some dates may have incomplete data due to delays in reporting. Data may be backfilled over time, resulting in week-to-week changes.

Testing: Combination of CELR (COVID-19 Electronic Lab Reporting) state health department-reported data and HHS Protect laboratory data (provided directly to Federal Government from public health labs, hospital labs, and commercial labs). The term Nucleic Acid Amplification Test (NAAT) includes RT-PCR and other testing methods. Data are through 11/2/2021. The week one month before is from 9/29 to 10/5; the week two months before is from 9/1 to 9/7; the week three months before is from 8/4 to 8/10. As of 8/31/2021, Washington has been experiencing technical issues. As a result, test positivity and test volume may be incomplete and cannot be calculated for the last week.

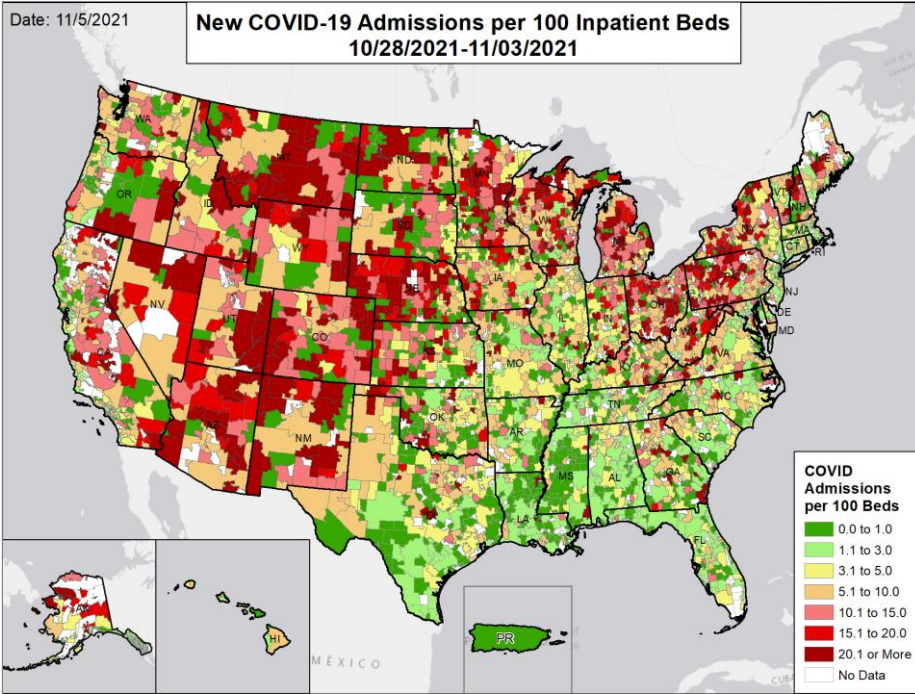
METHODS: Details available on last two pages of report.



National Picture: Hospital Admissions

CONFIRMED NEW COVID-19 ADMISSIONS PER 100 INPATIENT BEDS

NATIONAL RANKING OF CONFIRMED ADMISSIONS PER 100 BEDS



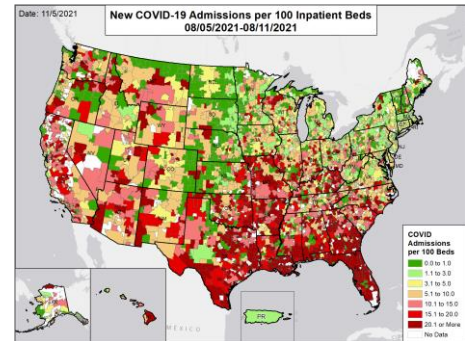
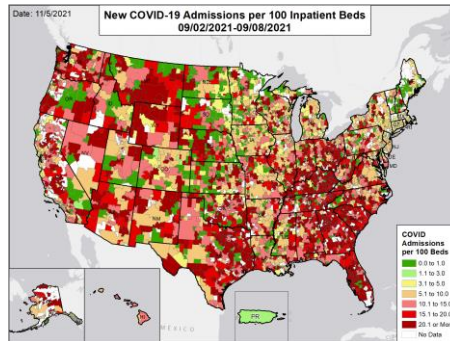
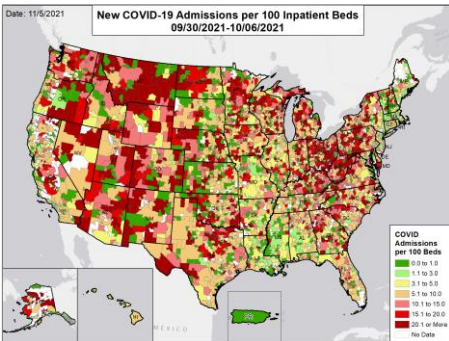
National Rank	State	National Rank	State
1	PR	27	IN
2	DC	28	WA
3	HI	29	ME
4	LA	30	OK
5	MS	31	GA
6	AL	32	IA
7	CT	33	NH
8	RI	34	PA
9	MA	35	NV
10	NJ	36	SD
11	TN	37	OH
12	FL	38	WV
13	AR	39	MN
14	NC	40	KY
15	IL	41	WI
16	NY	42	MI
17	MO	43	ND
18	SC	44	AK
19	VA	45	NE
20	TX	46	AZ
21	KS	47	ID
22	MD	48	UT
23	DE	49	NM
24	VT	50	CO
25	OR	51	WY
26	CA	52	MT

CONFIRMED NEW COVID-19 ADMISSIONS PER 100 INPATIENT BEDS IN THE WEEK:

ONE MONTH BEFORE

TWO MONTHS BEFORE

THREE MONTHS BEFORE



DATA SOURCES

Note: Some dates may have incomplete data due to delays in reporting. Data may be backfilled over time, resulting in week-to-week changes.

Admissions: Unified Hospitals Dataset in HHS Protect through 11/3/2021. Totals include only confirmed COVID-19 admissions. Puerto Rico is shown at the territory level as HSAs are not defined. The week one month before is from 9/30 to 10/6; the week two months before is from 9/2 to 9/8; the week three months before is from 8/5 to 8/11. HSA indicates Hospital Service Area. Hospitals are assigned to HSA based on zip code where known. In some areas, reports are aggregates of multiple facilities that cross HSA boundaries; in these cases, values are assigned based on the zip code for the aggregate.

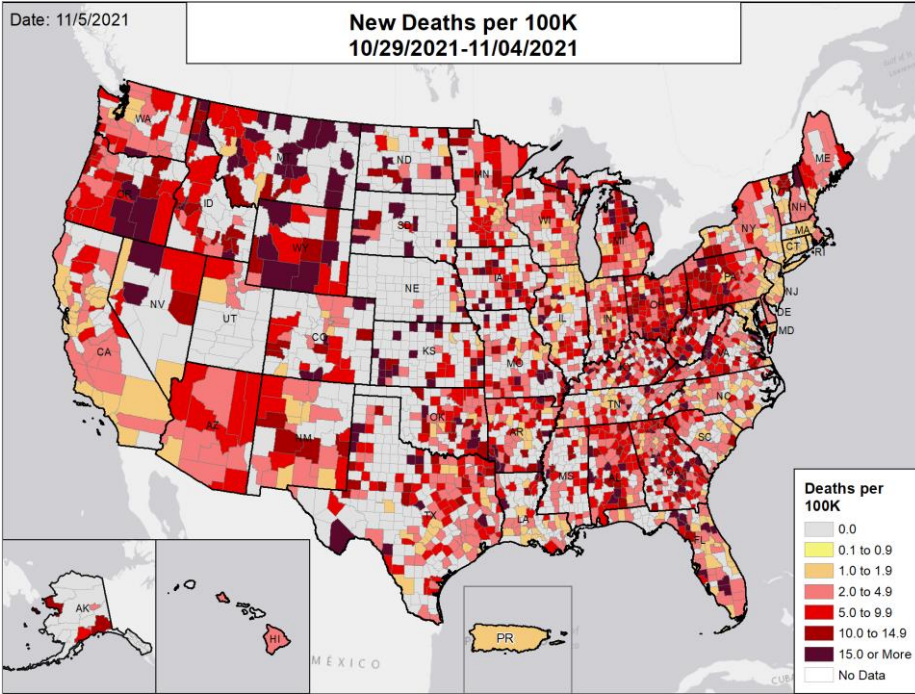
METHODS: Details available on last two pages of report.



National Picture: Deaths

NEW DEATHS PER 100,000

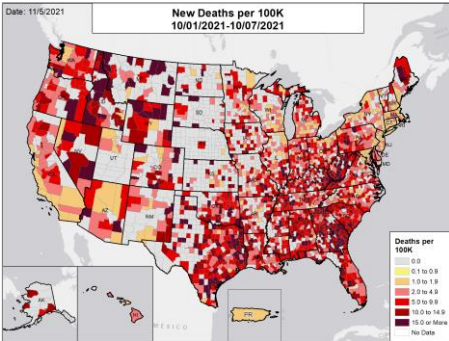
NATIONAL RANKING OF NEW DEATHS PER 100,000



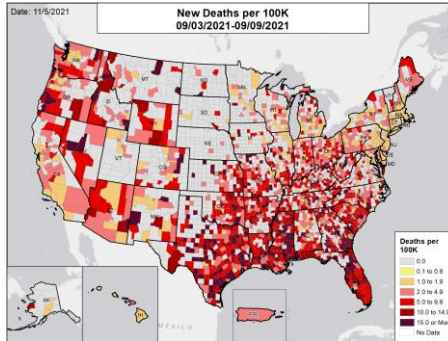
National Rank	State	National Rank	State
1	FL	27	HI
2	RI	28	MO
3	PR	29	IN
4	NJ	30	DE
5	CT	31	SD
6	DC	32	NM
7	CA	33	ME
8	MS	34	SC
9	MA	35	IA
10	NY	36	CO
11	MD	37	NH
12	LA	38	AZ
13	IL	39	KS
14	MI	40	AR
15	NV	41	KY
16	VT	42	PA
17	NC	43	ND
18	WI	44	GA
19	TN	45	OK
20	WA	46	OR
21	NE	47	OH
22	AK	48	AL
23	MN	49	WV
24	VA	50	ID
25	TX	51	MT
26	UT	52	WY

NEW DEATHS PER 100,000 IN THE WEEK:

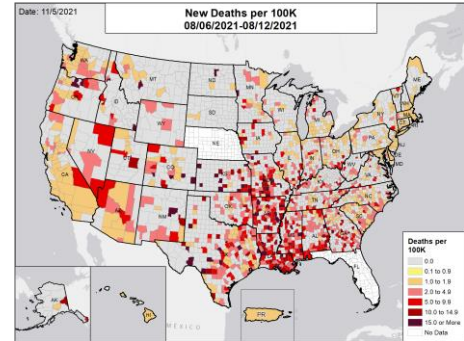
ONE MONTH BEFORE



TWO MONTHS BEFORE



THREE MONTHS BEFORE



DATA SOURCES

Note: Some dates may have incomplete data due to delays in reporting. Data may be backfilled over time, resulting in week-to-week changes.

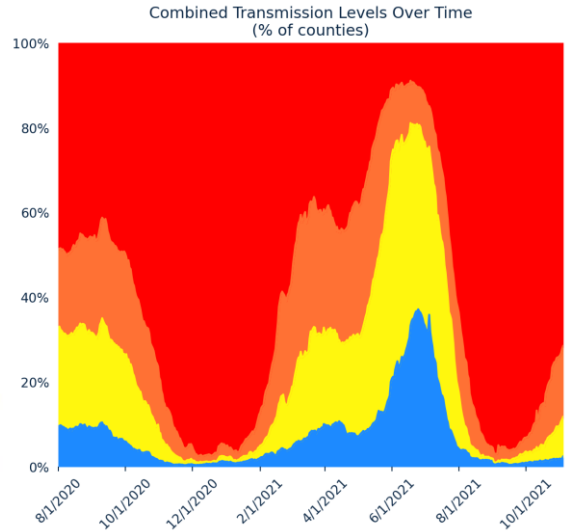
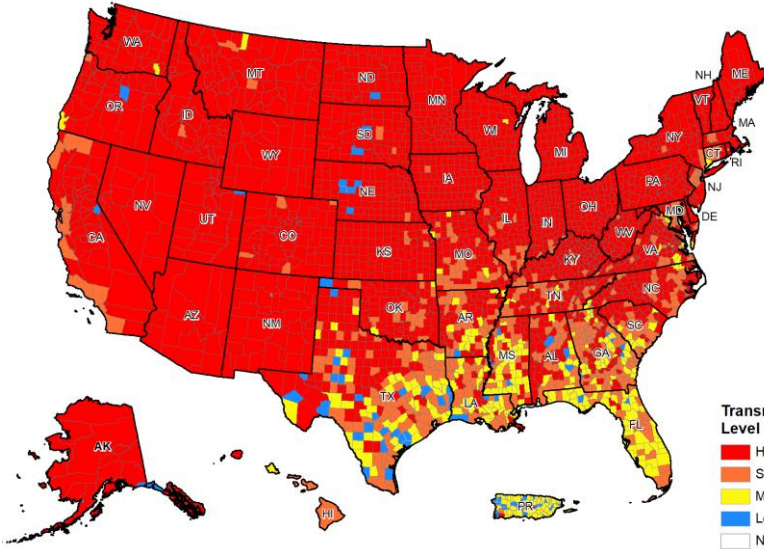
Deaths: County-level data are from a CDC managed aggregate county dataset compiled from state and local health departments; therefore, the values may not match those reported directly by the state. State values are aggregated data provided by the states to the CDC. Between 6/5 and 8/18, Florida was not updating their county deaths data; therefore no county death data are available for this time frame. As of 8/10/2021, Florida changed their method of reporting COVID-19 deaths at the state level and will report on the day of incident, not the day of report, which could result in a fluctuation in the number of deaths from recent weeks due to delayed reporting. As of 6/30, Nebraska was no longer updating their state dashboard and since 5/26, Nebraska was reporting by Local Health Department instead of county; therefore, between 5/25 and 9/1 no county case and death data are available. As of 9/21, Nebraska began providing county case and death data directly to CDC, with daily data going back to 9/2. As of 3/2/2021, Ohio changed their method of reporting COVID-19 deaths and will report deaths on the day of death, not the day of report, which could result in a fluctuation in the number of deaths from recent weeks due to delayed reporting. As of 10/20/2021, Oklahoma changed their method of reporting COVID-19 deaths to include provisional deaths, which could result in a higher number of deaths in recent weeks due to delayed reporting. Puerto Rico is shown at the territory level as deaths are not reported at the municipio level. The week one month before is from 10/1 to 10/7; the week two months before is from 9/3 to 9/9; the week three months before is from 8/6 to 8/12.

METHODS: Details available on last two pages of report.



National Picture: Community Transmission

COMMUNITY TRANSMISSION BY COUNTY



COUNTIES BY COMMUNITY TRANSMISSION INDICATOR

CASES PER 100K	0 TO 9	10 TO 49	50 TO 99	100 +
# OF COUNTIES (CHANGE)	107 (↑26)	329 (↑74)	591 (↑36)	2193 (↓136)
% OF COUNTIES (CHANGE)	3.3% (↑0.8%)	10.2% (↑2.3%)	18.4% (↑1.1%)	68.1% (↓4.2%)
TEST POSITIVITY	0.0% TO 4.9%	5.0% TO 7.9%	8.0% TO 9.9%	10.0% +
# OF COUNTIES (CHANGE)	1048 (↑63)	668 (↓36)	348 (↓41)	1156 (↑14)
% OF COUNTIES (CHANGE)	32.5% (↑2.0%)	20.7% (↓1.1%)	10.8% (↓1.3%)	35.9% (↑0.4%)

COUNTIES BY COMBINED TRANSMISSION LEVEL

CATEGORY	LOW TRANSMISSION BLUE	MODERATE TRANSMISSION YELLOW	SUBSTANTIAL TRANSMISSION ORANGE	HIGH TRANSMISSION RED
# OF COUNTIES (CHANGE)	77 (↑24)	302 (↑70)	538 (↑27)	2303 (↓121)
% OF COUNTIES (CHANGE)	2.4% (↑0.7%)	9.4% (↑2.2%)	16.7% (↑0.8%)	71.5% (↓3.8%)

DATA SOURCES

Maps and figures reflect 7-day average of data from 10/29-11/4 (cases), 10/27-11/2 (tests).

Note: Most recent days may have incomplete reporting.

Cases: County-level data are from a CDC managed aggregate county dataset compiled from state and local health departments; therefore, the values may not match those reported directly by the state. Data are through 11/4/2021.

Testing: Combination of CELR (COVID-19 Electronic Lab Reporting) state health department-reported data and HHS Protect laboratory data (provided directly to Federal Government from public health labs, hospital labs, and commercial labs). Data are through 11/2/2021. As of 8/31/2021, Washington has been experiencing technical issues. As a result, test positivity and test volume may be incomplete and cannot be calculated for the last week.

County Percentages: Based on a denominator of 3,220 county/county-equivalents, including states, the District of Columbia, and Puerto Rico municipalities.

Combined Transmission Level: If the two indicators suggest different transmission levels, the higher level is selected. Previous week transmission levels are computed based on current data. See [CDC COVID Data Tracker](#).

METHODS: Details available on last two pages of report.



DATA SOURCES & METHODS

STATE PROFILE REPORT | 11.05.2021

- Some dates may have incomplete data due to delays and/or differences in state reporting. Data may be backfilled over time, resulting in week-to-week changes between reports. It is critical that states provide as up-to-date data as possible. Figures and values may also differ from state reports due to differing methodologies. For more information, see [CDC COVID Data Tracker](#).
- All population values are vintage 2019 US Census data.
- **Cases and Deaths:** County-level data are from a CDC-managed aggregate county dataset compiled from state and local health departments; therefore, the values may not match those reported directly by the state. State values are aggregated data provided by the states to the CDC. Data and week-on-week changes are as of 11:49 EDT on 11/05/2021. Cases and deaths are generally shown by date of report. Some states periodically adjust their past data with CDC to show it by case date and death date, as determined by the state. Between adjustments, new cases and deaths continue to be shown by date of report. This can potentially lead to over-estimates of the week-on-week increases in cases or deaths. As of October 25, 2021, CDC no longer spreads aggregate COVID-19 case and death counts evenly over non-reporting days (i.e., smoothing), to avoid under-reporting of weekend averages.
 - Between 6/5 and 8/18, Florida was not updating their county death data; therefore no county death data are available for this time frame. As of 8/10/2021, Florida changed their method of reporting COVID-19 cases and deaths at the state level and will report cases and deaths on the day of incident, not the day of report, which could result in a fluctuation in the number of deaths from recent weeks due to delayed reporting. As of 6/30, Nebraska was no longer updating their state dashboard and since 5/26, Nebraska was reporting by Local Health Department instead of county; therefore, between 5/25 and 9/1 no county case and death data are available. As of 9/21/2021, Nebraska began providing county case and death data directly to CDC, with daily data going back to 9/2. As of 3/2/2021, Ohio changed their method of reporting COVID-19 deaths and will report deaths on the day of death, not the day of report, which could result in a fluctuation in the number of deaths from recent weeks due to delayed reporting. Oklahoma changed their method of reporting COVID-19 deaths to include provisional deaths, which could result in a higher number of deaths in recent weeks due to delayed reporting. Puerto Rico deaths are shown at the territory level as deaths are not reported at the municipio level.
 - Historical reports of cases and deaths — for which backfill dates are not available — that exceed 1% of the total new cases or deaths reported in the US that day have been excluded from state daily and weekly trends. However, these are still present in county-level data. Historical reports in the last two weeks (10/22/21 – 11/4/21) are:
 - Alabama cases: 7,393 on 10/26
 - California cases: 21,465 on 10/28
 - Michigan deaths: 69 on 10/22; 29 on 10/25; 66 on 10/27; 64 on 10/29; 29 on 11/1; and 75 on 11/3
 - Minnesota cases: 7,954 on 11/1
 - Mississippi deaths: 8 on 10/22; 27 on 10/25; 25 on 10/26; 1 on 10/28; 7 on 10/29; 18 on 11/1; and 17 on 11/2
 - New York deaths: -322 on 11/3
 - Texas cases: 316 on 10/22; 451 on 10/23; 94 on 10/24; 47 on 10/25; 262 on 10/26; 457 on 10/27; 420 on 10/28; 137 on 10/29; 569 on 10/30; 64 on 10/31; 5 on 11/1; 685 on 11/2; 108 on 11/3; and 119 on 11/4
- **Testing:** The data presented represent viral COVID-19 laboratory diagnostic and screening test results — not individual people — and exclude antibody and antigen tests, unless stated otherwise. The term Nucleic Acid Amplification Test (NAAT) includes RT-PCR and other testing methods, which were always included in the testing data. CELR (COVID-19 Electronic Lab Reporting) state health department-reported data are used to describe county-level viral COVID-19 NAAT result totals when information is available on patients' county of residence or healthcare providers' practice location. HHS Protect laboratory data (provided directly to Federal Government from public health labs, hospital labs, and commercial labs) are used otherwise. Because the data are deidentified, total NAATs are the number of tests performed, not the number of individuals tested. NAAT positivity rate is the number of positive tests divided by the number of tests performed and resulted. For test positivity, last week data are from 10/27 to 11/2; previous week data are from 10/20 to 10/26; the week one month before data are from 9/29 to 10/5. For number of tests, last week data are from 10/23 to 10/29; previous week data are from 10/16 to 10/22. HHS Protect data are recent as of 10:36 EDT on 11/05/2021. Testing data are inclusive of everything received and processed by the CELR system as of 19:00 EDT on 11/04/2021. As of 8/31/2021, Washington has been experiencing technical issues. As a result, test positivity and test volume may be incomplete and cannot be calculated for the last week.
- **Hospitalizations:** Unified Hospitals Dataset in HHS Protect. These data exclude psychiatric, rehabilitation, and religious non-medical hospitals. In addition, hospitals explicitly identified by states/regions as those from which we should not expect reports were excluded from the percent reporting figure. The data presented represents raw data provided; we are working diligently with state liaisons to improve reporting consistency. Data are recent as of 10:44 EDT on 11/05/2021.
- **Hospital PPE:** Unified Hospitals Dataset in HHS Protect. This figure may differ from state data due to differences in hospital lists and reporting between federal and state systems. These data exclude psychiatric, rehabilitation, and religious non-medical hospitals. Hospitals explicitly identified by states/regions as those from which we should not expect reports were excluded from the percent reporting figure. Data are recent as of 10:34 EDT on 11/05/2021.
- **State, County, and Metro Area Community Transmission Levels**
 - **High Transmission:** Those states, CBSAs, and counties that during the last week reported 100 or more cases per 100,000 population or a lab test positivity at or above 10.0%.
 - **Substantial Transmission:** Those states, CBSAs, and counties that during the last week reported from 50 to 99 cases per 100,000 population or a lab test positivity from 8.0% to 9.9%.
 - **Moderate Transmission:** Those states, CBSAs, and counties that during the last week reported from 10 to 49 cases per 100,000 population or a lab test positivity from 5.0% to 7.9%.
 - **Low Transmission:** Those states, CBSAs, and counties that during the last week reported from 0 to 9 cases per 100,000 population or a lab test positivity from 0.0% to 4.9%.
 - If the two indicators suggest different transmission levels, the higher level is selected. Previous week transmission levels are computed based on current data. See [CDC COVID Data Tracker](#).
- **Shortages:** Unified Hospitals Dataset in HHS Protect. These data exclude psychiatric, rehabilitation, and religious non-medical hospitals. Includes hospitals currently reporting a staffing shortage. Low supply is defined as a hospital reporting they are not able to maintain a 3-day supply of N95s, face masks, gloves, gowns, or eye protection. Data are recent as of 10:34 EDT on 11/05/2021.
- **Vaccinations:** [CDC COVID Data Tracker](#). Data includes the Moderna, Pfizer BioNTech, and J&J/Janssen COVID-19 vaccines and reflects current data available as of 13:12 EDT on 11/05/2021. Data last updated 06:00 EDT on 11/05/2021. Persons who are fully vaccinated include those who have received both doses of the Moderna or Pfizer-BioNTech vaccine as well as those who have received one dose of the J&J/Janssen vaccine. Allocations are made pro rata (equal based on population) from which jurisdictions are then to order. COVID-19 vaccines available in the U.S. are authorized only for persons ≥12 years of age (Pfizer-BioNTech) or ≥18 years of age (Moderna and J&J/Janssen). Population denominators reflect the subset of the population of the corresponding age range when specified (e.g., 12+, 12-17, 18+, or 65+), otherwise the total population is used. The count of people who received a booster dose includes anyone who is fully vaccinated and has received another dose of COVID-19 vaccine since August 13, 2021. This includes people who received booster doses and people who received additional doses. CDC has capped the percent of population coverage metrics at 99.9%. These metrics could be greater than 99.9% for multiple reasons, including census denominator data not including all individuals that currently reside in the county (e.g., part time residents) or potential data reporting errors. The following states have ≤80% completeness reporting vaccinations by county, which may result in underestimates of vaccination data for counties: VT (74%), WV (60%), GA (58%), and HI (0%).
- **Variants:** Data from [CDC COVID Data Tracker](#). Variant proportions are based on representative CDC sequence data (NS3 + CDC-funded contract sequencing) collected over a 4-week period ending October 9, 2021 for states with at least 300 sequences. Proportions are calculated using empirical (unweighted) data, which are subject to change over time and will be updated as more data become available. Proportions of variants do not represent the total number that may be circulating in the United States and may not match cases reported by states, territories, tribes, and local officials. For states and jurisdictions not listed, CDC has insufficient genomic surveillance data for the specified time period. Data updated by 19:00 ET on 11/2. Data pulled 11:12 EDT on 11/05/2021.



DATA SOURCES & METHODS

STATE PROFILE REPORT | 11.05.2021

Color threshold values are rounded before color classification

Metric	Dark Green	Light Green	Yellow	Orange	Light Red	Red	Dark Red	Darkest Red
New cases per 100,000 population per week	≤4	5 – 9	10 – 49	50 – 99	100 – 199	200 – 499	500 – 749	≥750
Percent change in new cases per 100,000 population	≤-26%	-25% – -11%	-10% – 0%	1% – 10%	11% – 99%	100% – 999%	≥1000%	
Diagnostic test result positivity rate	≤2.9%	3.0% – 4.9%	5.0% – 7.9%	8.0% – 9.9%	10.0% – 14.9%	15.0% – 19.9%	20.0% – 24.9%	≥25.0%
Change in test positivity	≤-2.1%	-2.0% – -0.6%	-0.5% – 0.0%	0.1% – 0.5%	0.6% – 2.0%		≥2.1%	
Total diagnostic tests resulted per 100,000 population per week	≥5000	3000 – 4999	2000 – 2999	1000 – 1999	500 – 999		≤499	
Percent change in tests per 100,000 population	≥26%	11% – 25%	1% – 10%	-10% – 0%	-25% – -11%		≤-26%	
COVID-19 deaths per 100,000 population per week	0.0		0.1 – 0.9	1.0 – 1.9	2.0 – 4.9	5.0 – 9.9	10.0 – 14.9	≥15.0
Percent change in deaths per 100,000 population	≤-26%	-25% – -11%	-10% – 0%	1% – 10%	11% – 25%		≥26%	
Confirmed new COVID-19 hospital admissions per 100 beds	≤1.0	1.1 – 3.0	3.1 – 5.0	5.1 – 10.0	10.1 – 15.0	15.1 – 20.0	≥20.1	
Change in new COVID-19 hospital admissions per 100 beds	≤-26%	-25% – -11%	-10% – 0%	1% – 10%	11% – 25%		≥26%	
Percent of hospitals with supply/staff shortages	≤9%		10% – 19%	20% – 29%	30% – 39%		≥40%	
Change in percent of hospitals with supply/staff shortages	≤-10%	-9% – -5%	-4% – 0%	1% – 4%	5% – 9%		≥10%	
Percent of Population Fully Vaccinated (State Level)	0.0 – 39.9%		40.0 – 49.9%	50.0 – 59.9%	60.0 – 69.9%	≥70.0%		