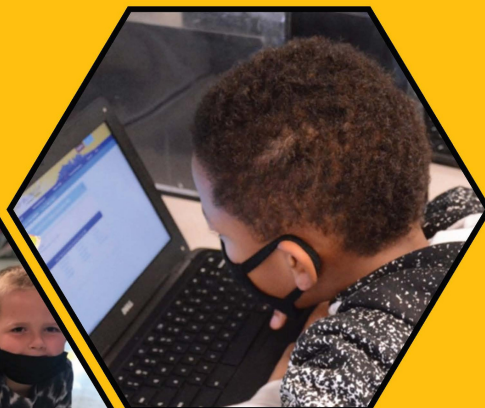
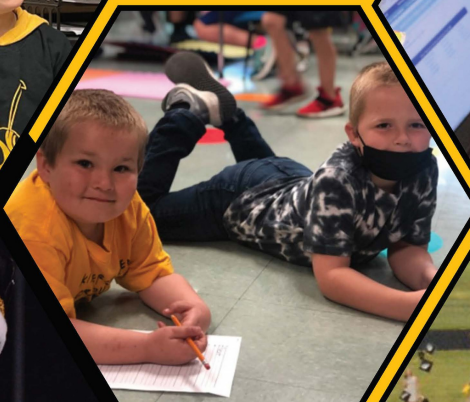


Safe Return to In-Person Instruction & Continuity of Services Plan



**Fulton School
District #58**



Approved by the Fulton Public Schools Board of Education on
August 11, 2021

FPS Safe Return to In-Person Instruction

Fulton Public Schools Families and Staff,

As we look to the upcoming school year, we will continue to be affected by the COVID-19 pandemic. Throughout this next year, many things will remain uncertain but one thing remains the same, we will make all decisions with our student's health, safety, and education in mind. During this next year, we ask for your flexibility and understanding as we navigate these new territories together!

The climate of COVID-19 is ever-changing and as health experts learn more, this plan will likely evolve. FPS understands this and will continuously update and adapt as new recommendations come about. The guidance set out in this plan pertains specifically to our school settings and community. These operations may differ from the guidance provided to the general public.

The recommendations included in this document are endorsed by the Callaway County Health Department and the Fulton Public School District and are subject to adjustment as conditions change.

Again, thank you for your support as we make decisions #forOURkids!

#FultonProud

Continuity of Services

Procedures have been developed to support the continuity of services for students should an interruption of in-person instruction occur. In the event of quarantine, a Chromebook will be provided to each student. A hotspot will also be available for checkout if the student doesn't have WiFi access at home. The hotspot will be collected upon return to in-person instruction.

Depending on the grade level and specific needs of the student, teachers will use a variety of instructional strategies including, but not limited to remote participation through video, interactive lessons shared through Google Classroom, regular virtual meetings with the classroom teacher, and/or school counselor or social worker. If Homebound services prove to be more appropriate for the student the school will locate a tutor and provide 5 hours of one-to-one instruction over the course of a week.

FPS has a well-developed system of social, emotional, and mental health supports throughout the district. Each level utilizes some degree of classroom meeting, advisory, or seminar period where social-emotional learning content is either embedded or taught. In addition to employing the recommended number of professional school counselors at each attendance center, FPS has employed four full-time social workers to support the social, emotional, and mental wellness of students and staff. Whether in-person or learning remotely during quarantine, specialized staff will check in with students on a regular basis to ensure their social, emotional, and mental health needs are being met.

KEY PRIORITIES

Goals of FPS Return to School Plan:

- Continue in-person learning as a district. The importance of in-person learning is well-documented in children and as such a primary goal for FPS. Beyond the educational impact, there has been a substantial impact on social interactions, mental health, food security, and physical activity for children and families. Our goal is to keep our students as close to a traditional educational setting as possible while putting in safeguards for their health and safety.
- Maintain and promote the health and safety of our students and community as a whole by utilizing information and guidance from the Callaway County Health Department, Department of Health and Senior Services, and the Missouri Department of Elementary and Secondary Education to adjust and progress through this plan.

Our Return to School Plan is built around the following foundational priorities:

- **Increased Sanitation Efforts (Page 4)**
- **Parent Expectations (Page 5)**
- **Social Distancing (Page 6)**
- **Bus Safety (Page 7)**
- **Staff and Student Screening Measures (Page 8)**
- **Limited Visitor Access to Buildings (Page 7)**
- **Procedures for COVID-19 Infections (Page 11)**
- **Personal Protective Equipment (Page 12)**

See online resources on page 15

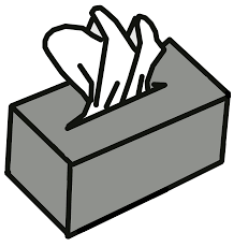
INCREASED SANITATION

- During school hours, custodians will thoroughly clean high-touch surfaces throughout the building regularly.
- Classrooms and other common spaces will be cleaned and disinfected regularly.
- Cleaning materials and hand sanitizer will be readily available. Staff will be expected to support the cleaning and disinfecting of classroom surfaces and supplies as needed.
- Hand washing stations with soap and/or hand sanitizer will be available in classrooms, commonly used areas, and at the entrances and exits of all buildings.
- Drinking fountains with refillable water bottle stations have been installed and can be used for individual drinking containers.
- All school buses will be thoroughly sanitized regularly.

Keeping your child and family safe at home *Tips to help control the spread of illness*



Wash hands with soap and water for at least 20 seconds. Use alcohol-based hand sanitizer if soap and water are unavailable.



Cough or sneeze into your elbow or tissue. Throw the tissue in the trash. Wash hands or use hand sanitizer.



Avoid touching your face with unwashed hands.



Clean and disinfect frequently touched objects and surfaces.



Avoid contact with people who are sick and stay home if you are sick.

PARENT EXPECTATIONS

STAY WELL HORNETS



**Not Feeling Well?
STAY HOME**

**BEFORE YOU DROP-OFF YOUR STUDENT AT SCHOOL OR
BEFORE THEY GET ON THE BUS PLEASE DO THIS!!**

Daily Self Assessment

- Have you been within 6ft of a person who is positive for COVID-19 in the past 14 days?
- Has a public health official or healthcare provider advised you to get tested for COVID-19?
- In the last 48 hours, have you had any of the following NEW symptoms?
 - Fever greater than or equal to ≥ 100.4 F
 - Cough
 - Trouble breathing
 - Chills
 - Muscle aches
 - Sore throat
 - Loss of smell or taste
 - Nausea, vomiting or diarrhea
 - Headache

COVID Hotline 573.590.8070

Report a student positive for COVID-19 24hrs a day

SOCIAL DISTANCE ENCOURAGED

IT'S A GREAT DAY TO BE A HORNET!

#FultonProud

SOCIAL DISTANCING

Fulton Public Schools will strive to create an environment that supports health guidelines without interrupting the education of our students.

- The goal is to limit exposure to as few other students and staff members as possible. Staff and students must do their very best to maintain as much distance as possible from others within school buildings.
- Assigned seats (with required seating charts) will be given within classrooms when occupying common areas, and for riding the bus. Additionally, small groups will be utilized to the extent possible. This will assist with contact tracing purposes in conjunction with the local health department if needed.
- Modifications within the school day will be made as needed.
- Modifications to meals will be made as needed (for example, having additional lunch shifts to lower the number of students in the cafeteria at one time).
- Desks in classrooms will be spaced as far apart as possible to allow for social distancing.



Bus Safety



Parents who can transport their students to/from school are encouraged to do so to help minimize the number of students riding the bus and allow for minimized contact.



Hand sanitizer and disposable masks will be available to students for boarding and unloading from the bus and students will be assigned seats to limit exposure.

The United States Department of Transportation advises that all persons on a school bus be properly masked. Therefore, we are asking for your cooperation as the new school year starts.

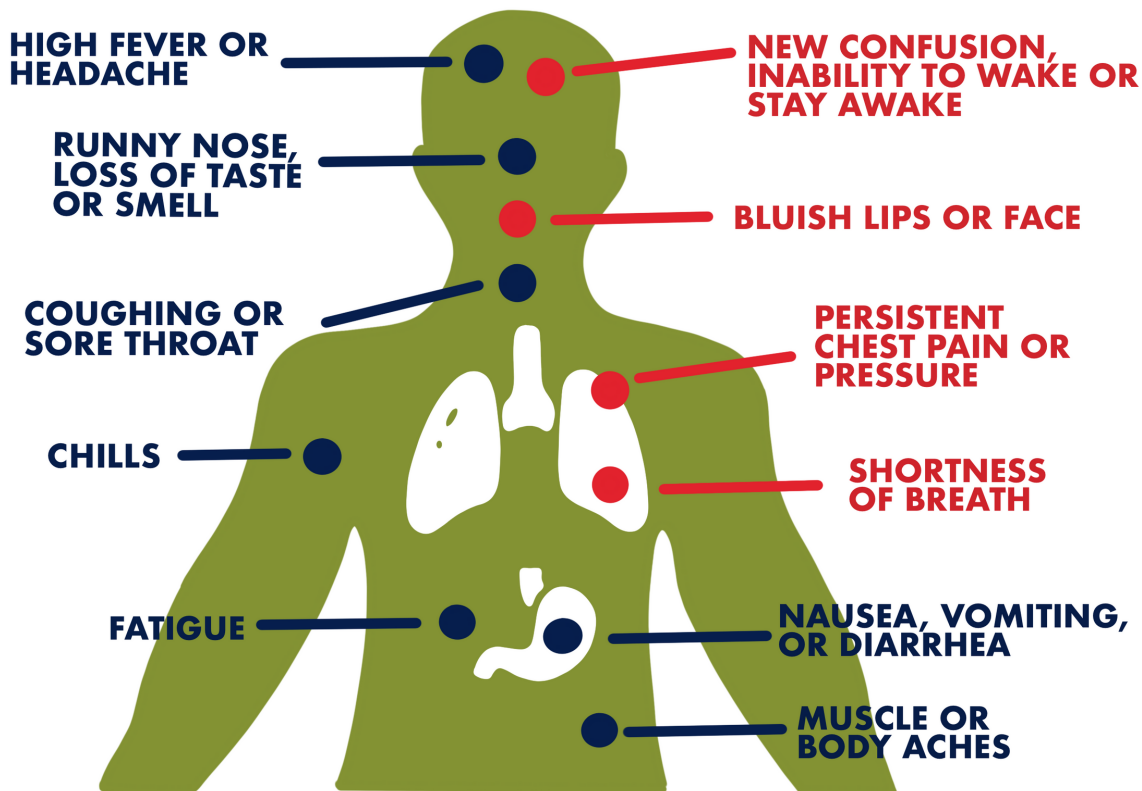
LIMITED VISITOR ACCESS TO BUILDINGS

- In order to minimize the exposure of all students and staff to others outside of their assigned small groups, outside visitors and parents access to the school building will be limited beyond the secure vestibules or entrances at school buildings.
- Any visitors who do enter the building will be required to enter through the main entrance and will be tracked in a visitor log.
- These restrictions will apply during the school day but may differ somewhat for certain activities or events, which would be optional to attend.

STAFF & STUDENT SCREENING MEASURES

- When students are kept home due to illness, the school attendance secretary will ask additional screening & entry questions regarding symptoms.
- Thermal cameras in each building will continue to be functional. Anyone experiencing a temperature at/above 100.4 will be screened further to determine if the individual needs to be sent home.

Students and staff who experience symptoms related to COVID-19 should NOT come to school. COVID-19 symptoms include the following:



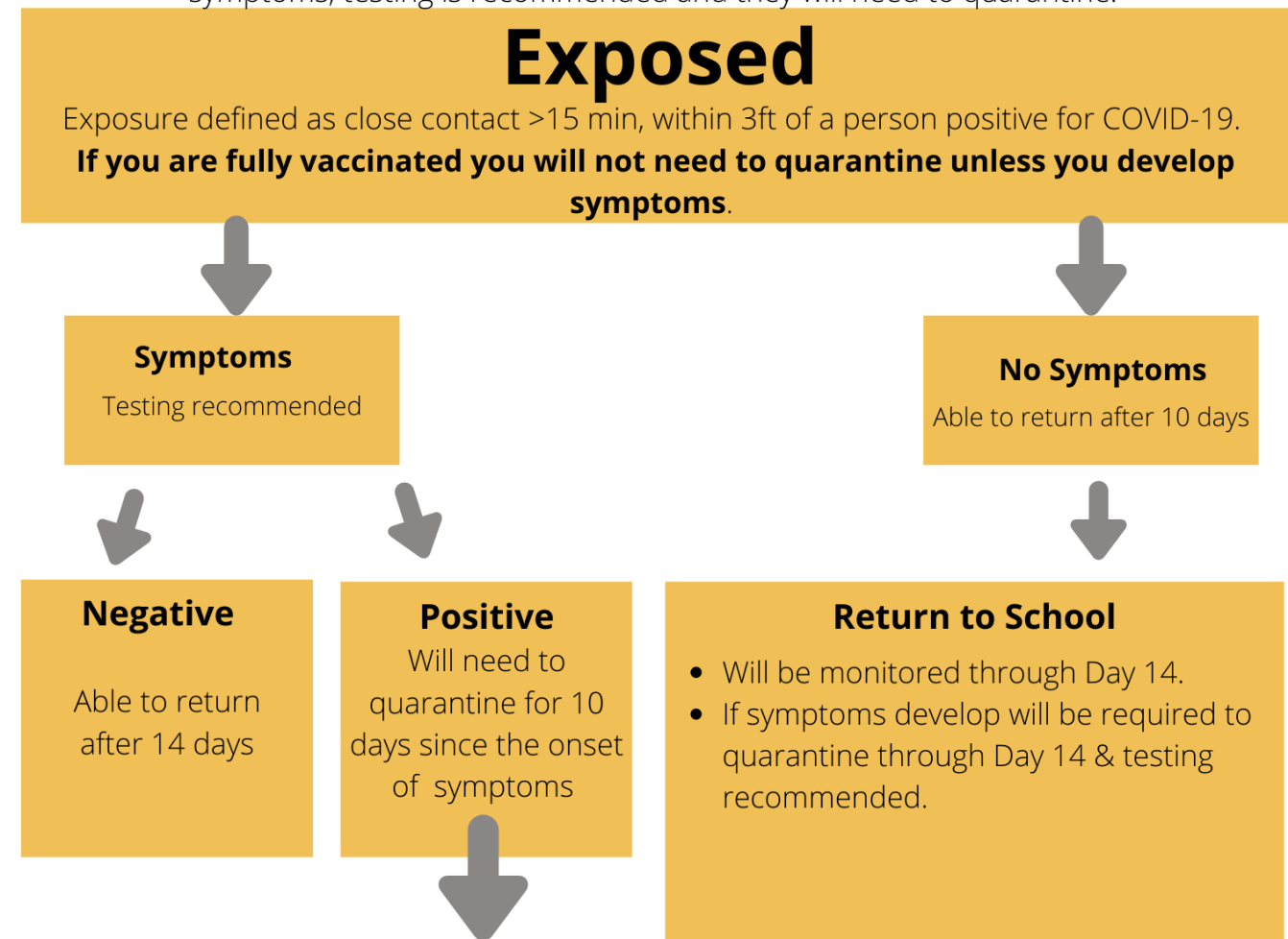
BLUE DOT SYMPTOMS
Symptoms may appear 2-14 days after exposure to the virus. People with these symptoms may have COVID-19.

RED DOT SYMPTOMS
Emergency warning signs for COVID-19. If you or someone you know is showing any of these signs, seek emergency medical care immediately.

STAFF & STUDENT SCREENING MEASURES

Return to School Guidelines Following An Exposure

The return to school guidelines below will be used to allow for students re-admittance to school following exposure to someone positive for COVID-19. The exposed person must remain symptom-free for the full 14 days following exposure. If at any time during the 14 days they have symptoms, testing is recommended and they will need to quarantine.



Return to school guidelines following a positive COVID-19 test

Persons with COVID-19 who HAVE symptoms:

- Must be fever free a minimum of 24 hours without fever-reducing medication
- AND have an improvement in symptoms (cough/shortness of breath)
- AND be at least ten (10) days since symptoms first appeared

Persons infected with COVID-19 who NEVER develop COVID-19 symptoms:

- May return 10 days after the date of their positive test

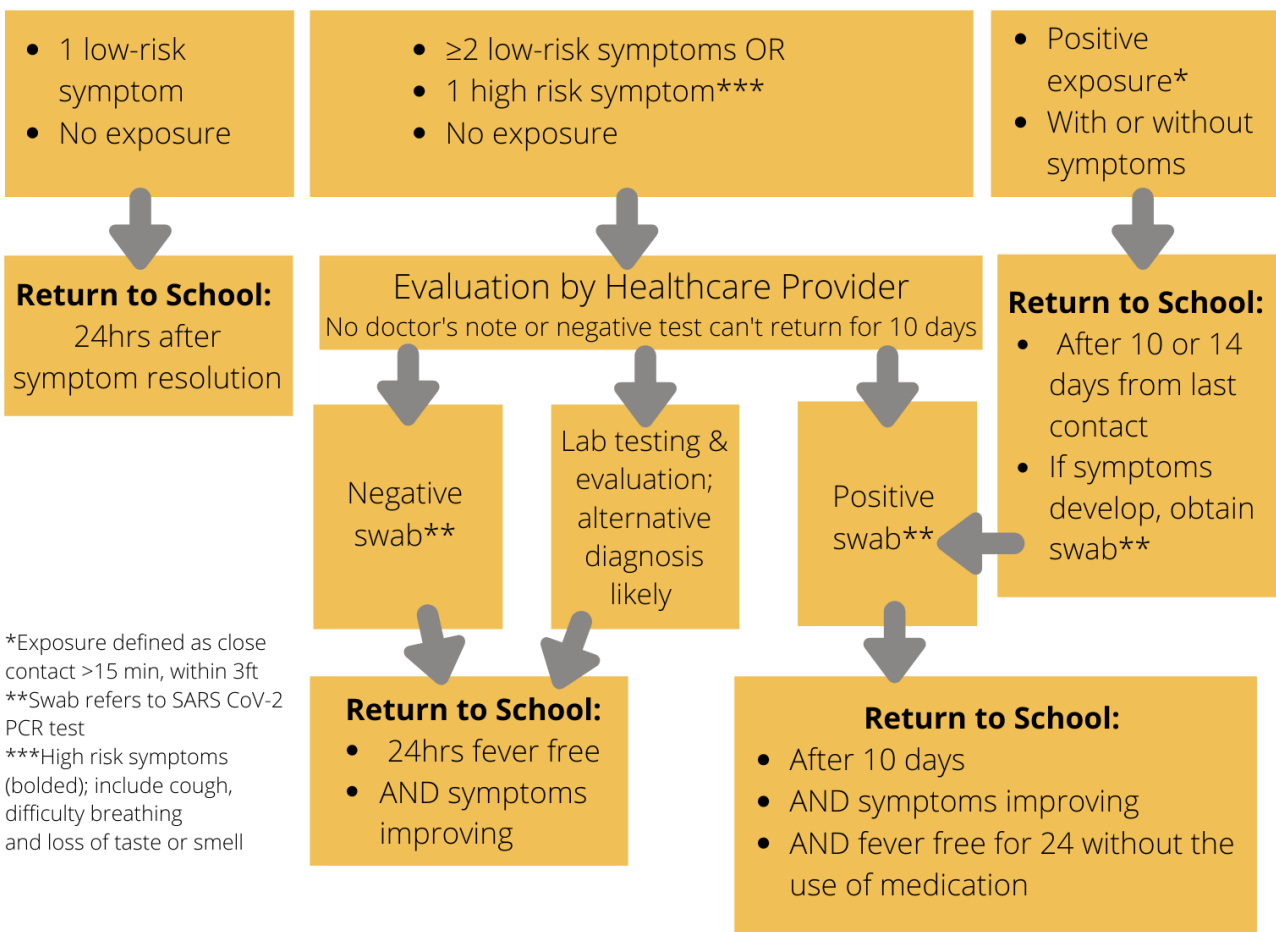
STAFF & STUDENT SCREENING MEASURES

Nurse Assessment & Return to School Guidelines

The return to school guidelines below will be used to allow for a student/staff member's re-admittance to school in the **ABSENCE** of a known condition causing their symptoms.

Screen all students for potential COVID-19 symptoms or exposure:

Any new **cough, difficulty breathing loss of taste/smell**, fever ($\geq 100.4^{\circ}\text{F}$), congestion/runny nose, nausea/vomiting/diarrhea, sore throat, headache, myalgia, or exposure to COVID-19 positive person?



*Exposure defined as close contact >15 min, within 3ft
**Swab refers to SARS CoV-2 PCR test
***High risk symptoms (bolded); include cough, difficulty breathing and loss of taste or smell

Return to school guidelines following a positive COVID-19 test

Persons with COVID-19 who HAVE symptoms:

- Must be fever free a minimum of 24 hours without fever-reducing medication
- AND have an improvement in symptoms (cough/shortness of breath)
- AND be at least ten (10) days since symptoms first appeared

Persons infected with COVID-19 who NEVER develop COVID-19 symptoms:

- May return 10 days after the date of their positive test

PROCEDURES FOR COVID-19 INFECTIONS

- Students or staff who display symptoms of COVID-19 while at school will be moved to a designated area within the school building to minimize contact with others until they go home.
- **If your child was found to be at sufficient risk for exposure through contact tracing, you will be contacted by Fulton Public School.**
- **Exposure, in the school setting is defined as being within 3 feet of the positive person for a cumulative 15 minutes.**
- **If a person is fully vaccinated they will not have to quarantine, unless they develop symptoms.**
- **If you are exposed and made to quarantine it will be for 10 days since the exposure, unless you develop symptoms. Then it would be for at least 14 days and testing is recommended.**
- **A negative COVID test will not shorten the quarantine length.**
- Students and staff may be contacted to assist with contact tracing efforts, review assigned seating charts, and determine which individuals the positive case had contact with while contagious.

WHAT IS CONTACT TRACING?

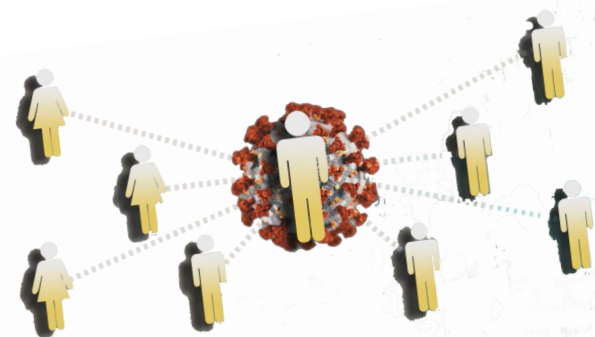
Contact tracing is used to prevent the spread of infectious disease.

In general, contact tracing involves identifying people who have an infectious disease (cases) and people who they came in contact with (contacts) and working with them to interrupt disease spread.

This includes asking people with COVID-19 to isolate and their contacts to quarantine at home voluntarily.

Contact tracing is a core disease control activity. It has been used for decades to slow or stop the spread of infectious disease.

Source: The Centers for Disease Control and Prevention (CDC)



PERSONAL PROTECTIVE EQUIPMENT

- Parents should discuss the importance of social distancing with their students prior to the start of school. It will be difficult to ensure students maintain distance, but it is necessary for staff and students to understand the importance of doing so to prevent exposure.
- The use of masks or face coverings will be highly encouraged when social distancing is not possible.
- Fulton Public Schools will follow any health department or city ordinances and reserve the right to implement stricter requirements related to face coverings.

Diagnostic and Screening and Testing

- Fulton Public School's staff will continue to have access to Rapid Antigen Tests
- Fulton Public Schools staff will be screened and quarantined following our current local public health guidelines.
- If a staff member is exposed to someone positive for COVID-19 but is vaccinated they will not have to quarantine.

Vaccinations

- Last spring FPS hosted a COVID vaccine clinic in conjunction with The Arthur Center for our staff who wanted to receive the vaccine
- FPS is continuing to encourage staff to receive the COVID-19 vaccine
- FPS is exploring with the local health department how we can best support increased vaccinations within our community.

Additional Information

- **APPROPRIATE ACCOMMODATIONS FOR CHILDREN WITH DISABILITIES WITH RESPECT TO THE HEALTH AND SAFETY POLICIES:** All students, whether disabled or nondisabled, have had and will continue to have the same level of safety and precautionary efforts taken when students return to school this fall. All students with Individualized Education Plans utilize “Form J” to document specific accommodations for online learning if and as needed. Case Managers for each student ensure all students on their caseloads have access to all of the respective resources based on their unique circumstances.
- **PERIODIC REVIEW & REVISION:** Modifications to this plan will be made in a timely and reasonable manner when necessary. The plan must be reviewed and revised if needed at least every six months in accordance with Federal Guidelines. The plan will be discussed in open meetings for input from stakeholders as well as utilizing surveys to collect input. Updates may be provided to the community via letters, email, social media, and public Board of Education meetings throughout the school year.
- **UNDERSTANDABLE LANGUAGE:** A language translator is currently present on the district website to which the SRCSP is posted. If there is a language not available on the list, the school district will make every effort to have the content of the Safe Return to In-Person Instruction and Continuity of Services Plan translated into an understandable language for families wishing to access the content.

ONLINE RESOURCES

[CDC: Coronavirus Symptoms](#)



[CDC: How to Protect Yourself & Others](#)



[CDC: When and How to Wash Your Hands](#)

[CDC: Social Distancing](#)



[CDC: Checklist for Parents & Teachers](#)

[Callaway County COVID-19 Website](#)



The Fulton Public School District's plan is subject to change if local conditions warrant a tightening or loosening of any of the proposed guidelines.