



STATE PROFILE REPORT  
05.07.2021

# MISSOURI

## STATE SYNOPSIS

	LAST WEEK	CHANGE FROM PREVIOUS WEEK
RATE OF NEW COVID-19 CASES PER 100,000	74	+6%
VIRAL (RT-PCR) LAB TEST POSITIVITY RATE	4.9%	+0.1%
NEW CONFIRMED COVID-19 HOSPITAL ADMISSIONS / 100 BEDS	3	+5%
RATE OF NEW COVID-19 DEATHS PER 100,000	1.3	+61%
COMMUNITY TRANSMISSION LEVEL	<b>SUBSTANTIAL TRANSMISSION</b>	
PEOPLE RECEIVED AT LEAST 1 DOSE	<b>2,371,232 people</b>	<b>38.6% of total pop.</b>
PEOPLE 65+ RECEIVED AT LEAST 1 DOSE	<b>813,208 people</b>	<b>76.6% of 65+ pop.</b>
PEOPLE FULLY VACCINATED	<b>1,817,658 people</b>	<b>29.6% of total pop.</b>
PEOPLE 65+ FULLY VACCINATED	<b>702,868 people</b>	<b>66.2% of 65+ pop.</b>

*The purpose of this report is to develop a shared understanding of the current status of the pandemic at the national, regional, state, and local levels. We recognize that data at the state level may differ from that available at the federal level. Our objective is to use consistent data sources and methods that allow for comparisons to be made across localities. We appreciate your continued support in identifying data discrepancies and improving data completeness and sharing across systems. We look forward to your feedback. All inquiries and requests for information should be directed to [COVID-Data-RFI@hhs.gov](mailto:COVID-Data-RFI@hhs.gov).*



**COVID-19**



# MISSOURI

STATE PROFILE REPORT | 05.07.2021

	STATE	STATE, % CHANGE FROM PREVIOUS WEEK	FEMA/HHS REGION	UNITED STATES				
NEW COVID-19 CASES (RATE PER 100,000)	4,542 (74)	+6%	9,634 (68)	307,153 (93)				
VIRAL (RT-PCR) LAB TEST POSITIVITY RATE	4.9%	+0.1%*	5.2%	4.1%				
TOTAL VIRAL (RT-PCR) LAB TESTS (TESTS PER 100,000)	79,597** (1,297**)	-2%**	179,998** (1,273**)	8,177,398** (2,464**)				
COVID-19 DEATHS (RATE PER 100,000)	79 (1.3)	+61%	159 (1.1)	4,519 (1.4)				
SNFs WITH ≥1 NEW RESIDENT COVID-19 CASE	2%†	+1%*	1%	4%				
SNFs WITH ≥1 NEW STAFF COVID-19 CASE	7%†	+2%*	6%	11%				
SNFs WITH ≥1 NEW RESIDENT COVID-19 DEATH	0%†	-1%*	1%	1%				
CONFIRMED AND SUSPECTED NEW COVID-19 HOSPITAL ADMISSIONS (RATE PER 100 BEDS)	1,593 (11)	-7% (-7%)	2,634 (8)	66,871 (9)				
CONFIRMED NEW COVID-19 HOSPITAL ADMISSIONS (RATE PER 100 BEDS)	479 (3)	+5% (+5%)	994 (3)	31,697 (4)				
NUMBER OF HOSPITALS WITH SUPPLY SHORTAGES (PERCENT)	6 (5%)	-14%	13 (3%)	331 (6%)				
NUMBER OF HOSPITALS WITH STAFF SHORTAGES (PERCENT)	22 (18%)	+5%	44 (9%)	628 (12%)				
COVID-19 VACCINE SUMMARY AS OF 5/7/2021	RECEIVED AT LEAST ONE DOSE				FULLY VACCINATED			
	PEOPLE	PCT OF POP	PEOPLE 65+	PCT OF 65+ POP	PEOPLE	PCT OF POP	PEOPLE 65+	PCT OF 65+ POP
2,371,232		38.6%	813,208 76.6%		1,817,658 29.6%		702,868 66.2%	

\* Indicates absolute change in percentage points.

\*\* Due to delayed reporting, this figure may underestimate total diagnostic tests and week-on-week changes in diagnostic tests.

† 89% of facilities reported during the most current week.

**DATA SOURCES**

**Note:** Some dates may have incomplete data due to delays in reporting. Data may be backfilled over time, resulting in week-to-week changes.

**Cases and Deaths:** State values are aggregated data provided by the states to the CDC. Historical reports of cases and deaths exceeding 1% of the total new cases or deaths reported in the US that day have been excluded. Data is through 5/6/2021; previous week is from 4/23 to 4/29.

**Testing:** CELR (COVID-19 Electronic Lab Reporting) state health department-reported data. Test positivity through 5/4/2021; previous week is from 4/21 to 4/27. Test volume through 4/30/2021; previous week is from 4/17 to 4/23.

**SNFs:** Skilled nursing facilities. National Healthcare Safety Network. Data is through 5/2/2021, previous week is from 4/19 to 4/25.

**Admissions:** Unified Hospitals Dataset in HHS Protect. Data is through 5/5, previous week is from 4/22 to 4/28.

**Shortages:** Unified Hospitals Dataset in HHS Protect. Values presented show the latest reports from hospitals in the week ending 5/5/2021 for staffing and the week ending 5/5/2021 for supplies.

**Vaccinations:** [CDC COVID Data Tracker](#). Data includes the Moderna, Pfizer BioNTech, and J&J/Janssen COVID-19 vaccines and reflects current data available as of 12:22 EDT on 05/07/2021. Data last updated 06:00 EDT on 05/07/2021. Persons who are fully vaccinated include those who have received both doses of the Moderna or Pfizer-BioNTech vaccine as well as those who have received one dose of the J&J/Janssen vaccine. Allocations are made pro rata (equal based on population) from which jurisdictions are then to order. Currently, few persons under age 18 are being vaccinated; this group represents ~22% of the US population and the percentage varies by jurisdiction.

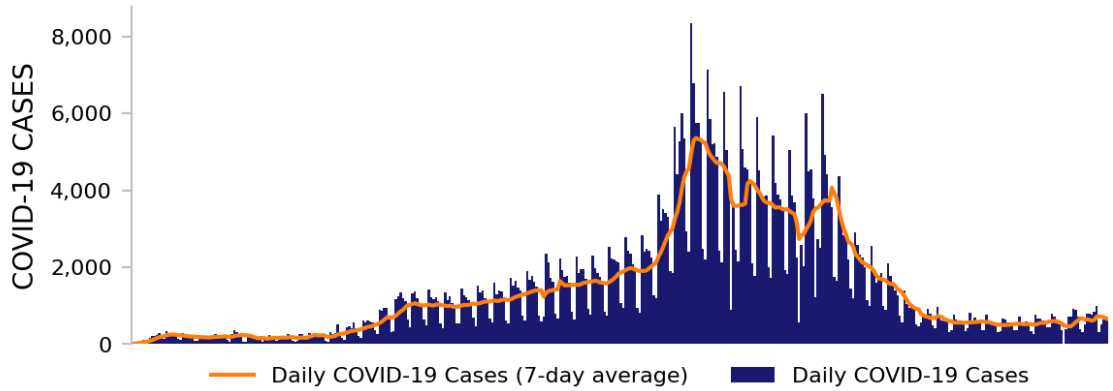
**METHODS:** Details available on last two pages of report.



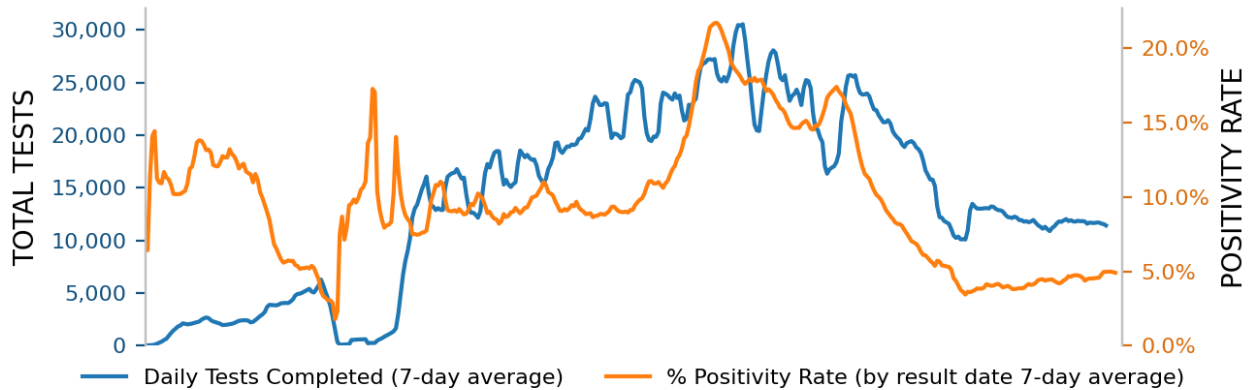
# MISSOURI

STATE PROFILE REPORT | 05.07.2021

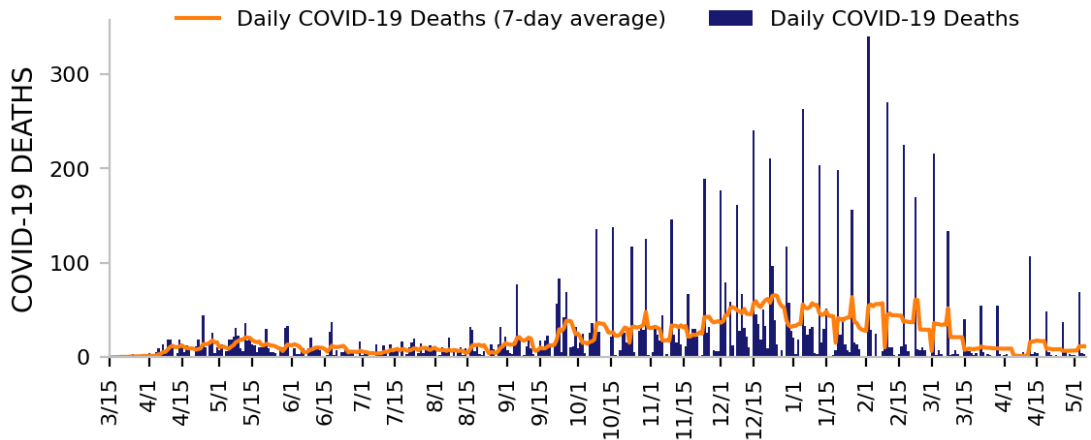
## NEW CASES



## TESTING



## NEW DEATHS



### DATA SOURCES

**Note:** Some dates may have incomplete data due to delays in reporting. Data may be backfilled over time, resulting in week-to-week changes. All three trends share the same horizontal axis shown on the bottom figure.

**Cases and Deaths:** State values are aggregated data provided by the states to the CDC. Historical cases and deaths exceeding 1% of the total new cases or deaths reported in the US that day have been excluded. Data is through 5/6/2021.

**Testing:** CELR (COVID-19 Electronic Lab Reporting) state health department-reported data. Test positivity through 5/4/2021. Test volume through 4/30/2021.

**METHODS:** Details available on last two pages of report.

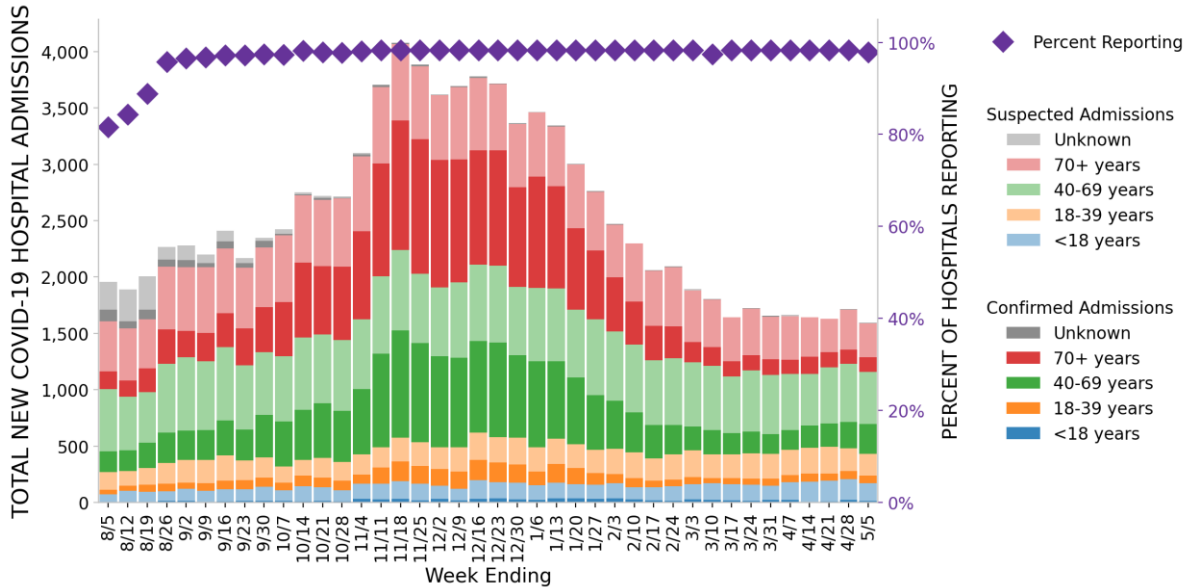


# MISSOURI

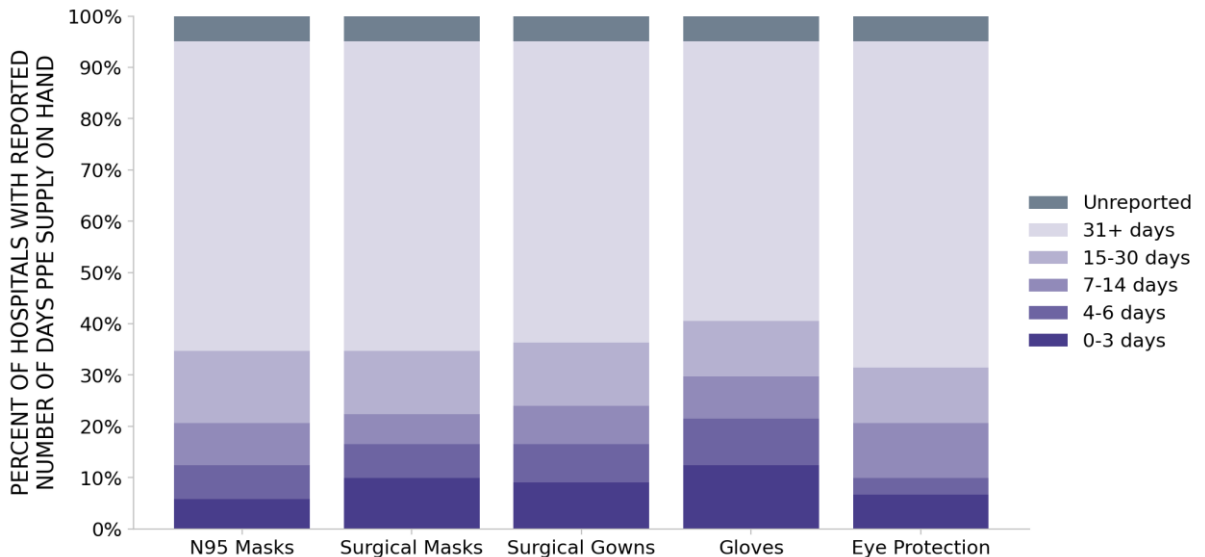
STATE PROFILE REPORT | 05.07.2021

121 hospitals are expected to report in Missouri

## HOSPITAL ADMISSIONS



## HOSPITAL PPE SUPPLIES



### DATA SOURCES

**Hospitalizations:** Unified Hospitals Dataset in HHS Protect. These data exclude psychiatric, rehabilitation, and religious non-medical hospitals. Hospitals explicitly identified by states/regions as those from which we should not expect reports were excluded from the percent reporting figure. Data is through 5/5/2021.

**PPE:** Unified Hospitals Dataset in HHS Protect. These data exclude psychiatric, rehabilitation, and religious non-medical hospitals. Values presented show the latest reports from hospitals in the week ending 5/5/2021.

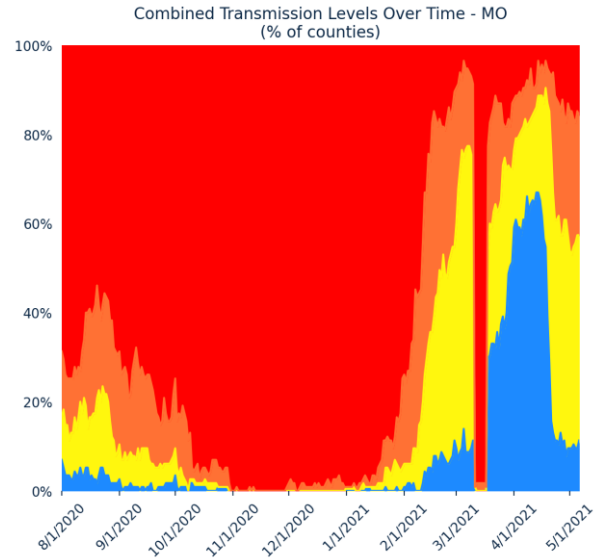
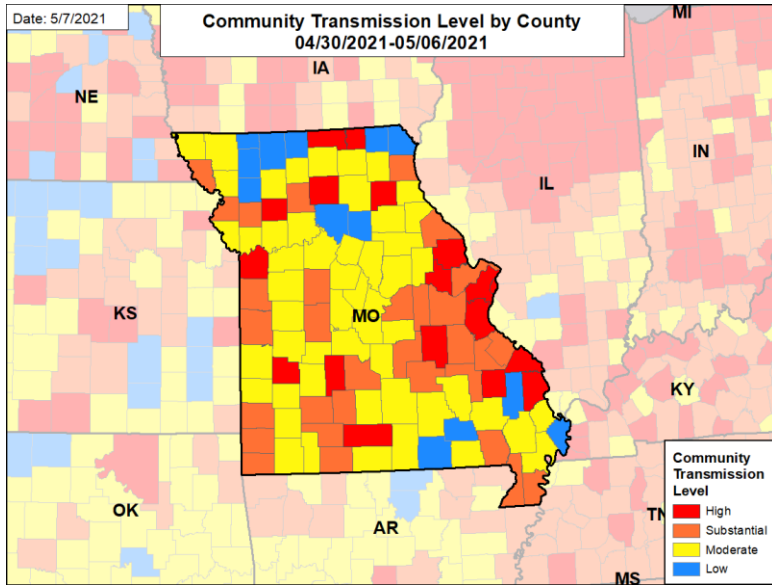
**METHODS:** Details available on last two pages of report.



# MISSOURI

STATE PROFILE REPORT | 05.07.2021

## COMMUNITY TRANSMISSION BY COUNTY AND METRO AREA



### COUNTIES AND METRO AREAS BY COMBINED TRANSMISSION LEVEL

CATEGORY	LOW TRANSMISSION BLUE	MODERATE TRANSMISSION YELLOW	SUBSTANTIAL TRANSMISSION ORANGE	HIGH TRANSMISSION RED
# OF COUNTIES (CHANGE)	13 (↑4)	53 (↓8)	31 (↑6)	18 (↓2)
# OF METRO AREAS (CHANGE)	1 (↑1)	12 (↓3)	14 (↑3)	0 (↓1)

**All Blue Counties:** Randolph, Bollinger, DeKalb, Oregon, Scotland, Harrison, Carter, Chariton, Clark, Gentry, Worth, Mississippi, Mercer

**All Blue CBSAs:** Moberly

**All Yellow Counties:** Clay, Boone, Platte, Pulaski, Cole, Callaway, Lawrence, Lafayette, Johnson, Stone, Polk, Scott, Camden, Miller, Barry, Texas, Stoddard, Adair, Henry, Vernon, Howell, Wright, Moniteau, Marion, Andrew, Macon, Ray, Barton, Montgomery, Ralls, Nodaway, Carroll, Ripley, St. Clair, Grundy, Sullivan, Saline, Hickory, Dade, Ozark, Audrain, Wayne, New Madrid, Morgan, Howard, Cooper, Atchison, Shannon, Maries, Reynolds, Knox, Daviess, Monroe

**All Yellow CBSAs:** Columbia, St. Joseph, Jefferson City, Fort Leonard Wood, Warrensburg, Sikeston, Kirksville, Hannibal, West Plains, Maryville, Mexico, Marshall

**All Orange Counties:** St. Charles, Greene, Jasper, Franklin, Christian, Cass, Buchanan, Newton, St. Francois, Phelps, Taney, Dunklin, Webster, Butler, Pettis, Laclède, Washington, McDonald, Benton, Bates, Clinton, Pike, Osage, Gasconade, Iron, Dent, Livingston, Lewis, Ste. Genevieve, Pemiscot, Holt

**All Orange CBSAs:** St. Louis, Kansas City, Springfield, Joplin, Cape Girardeau, Farmington, Rolla, Branson, Poplar Bluff, Kennett, Sedalia, Lebanon, Quincy, Fort Madison-Keokuk

**All Red Counties:** St. Louis, Jackson, St. Louis City, Jefferson, Lincoln, Cape Girardeau, Warren, Crawford, Dallas, Perry, Douglas, Cedar, Madison, Linn, Shelby, Caldwell, Putnam, Schuyler

#### DATA SOURCES

Maps and figures reflect 7-day average of data from 4/30-5/6 (cases), 4/28-5/4 (tests). Metro areas and counties are listed in order of the total number of cases in the last week from largest to smallest.

**Note:** Most recent days may have incomplete reporting.

**Cases:** County-level data is from a CDC managed aggregate county dataset compiled from state and local health departments; therefore, the values may not match those reported directly by the state. Data is through 5/6/2021.

**Testing:** CELR (COVID-19 Electronic Lab Reporting) state health department-reported data. Data is through 5/4/2021.

**Combined Transmission Level:** If the two indicators suggest different transmission levels, the higher level is selected. Previous week transmission levels are computed based on current data. See [CDC COVID Data Tracker](#).

**METHODS:** Details available on last two pages of report.

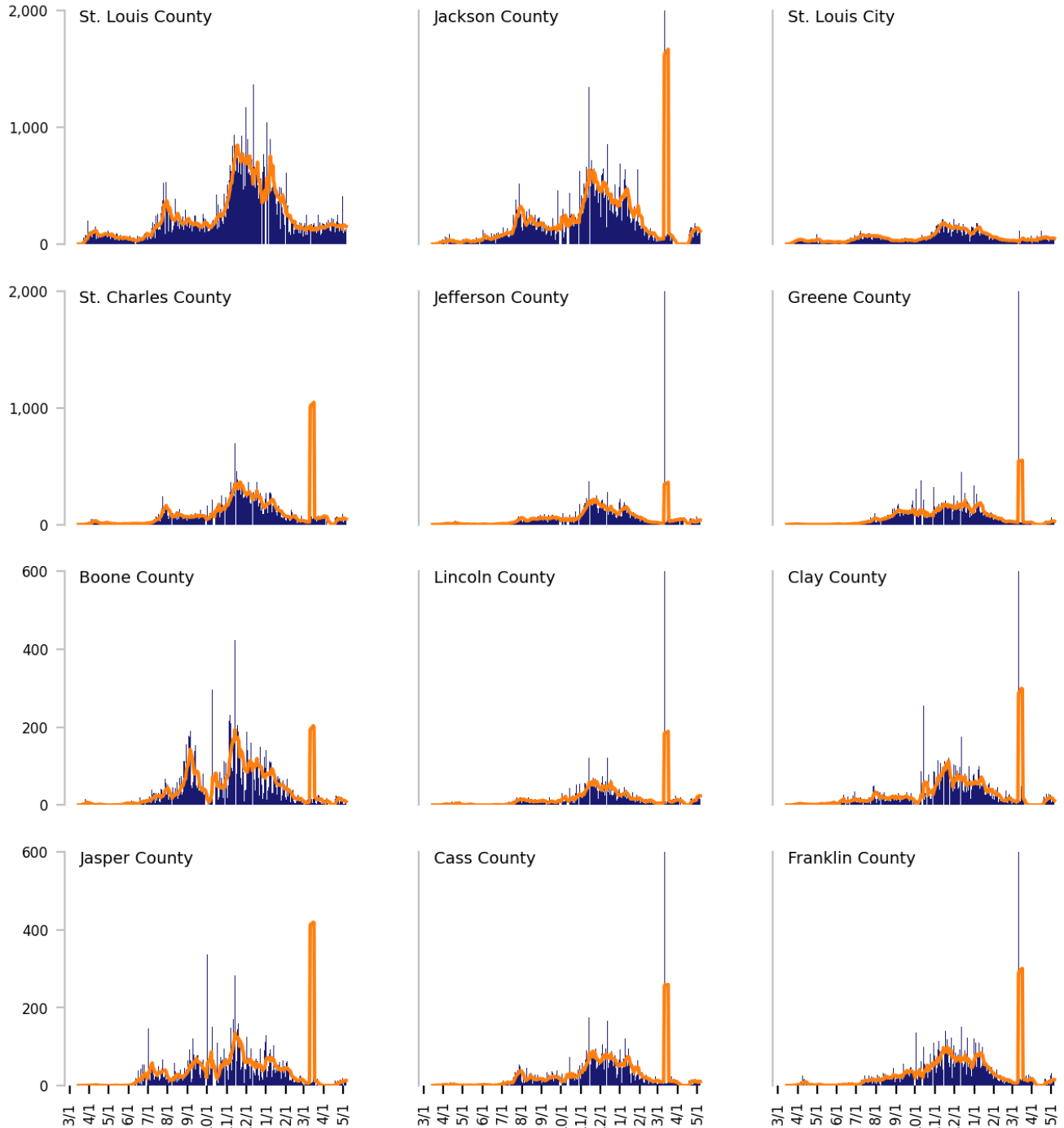


# Top 12 counties based on number of new cases in the last 3 weeks

The scale is fixed per row based on the historical peak number of daily cases\*

— Daily COVID-19 Cases (7-day average)    ■ Daily COVID-19 Cases

TOTAL DAILY CASES



\* The vertical scale of plots is fixed per row based on the historical peak number of daily cases; use caution when comparing visuals across different rows.

**DATA SOURCES**  
Cases: County-level data is from a CDC managed aggregate county dataset compiled from state and local health departments; therefore, the values may not match those reported directly by the state. Data is through 5/6/2021. Last 3 weeks is from 4/16 to 5/6. Counties are listed in order of the number of cases in the last three weeks, from largest to smallest.

**METHODS:** Details available on last two pages of report.

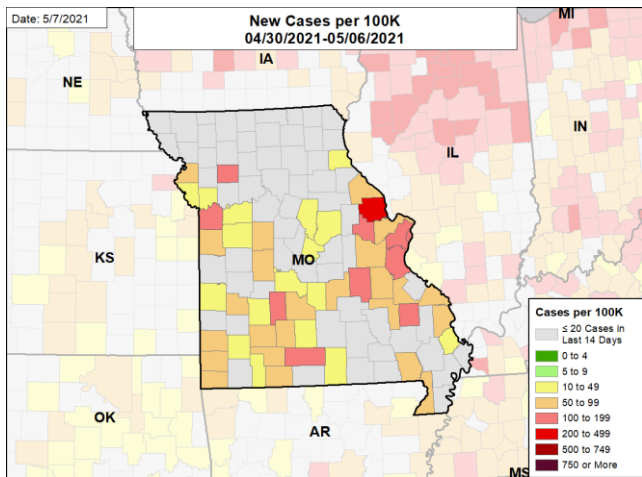


# MISSOURI

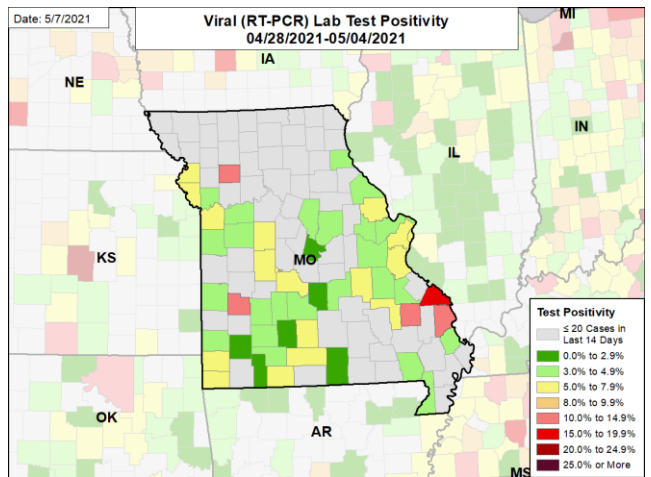
STATE PROFILE REPORT | 05.07.2021

## CASE RATES AND VIRAL LAB TEST POSITIVITY

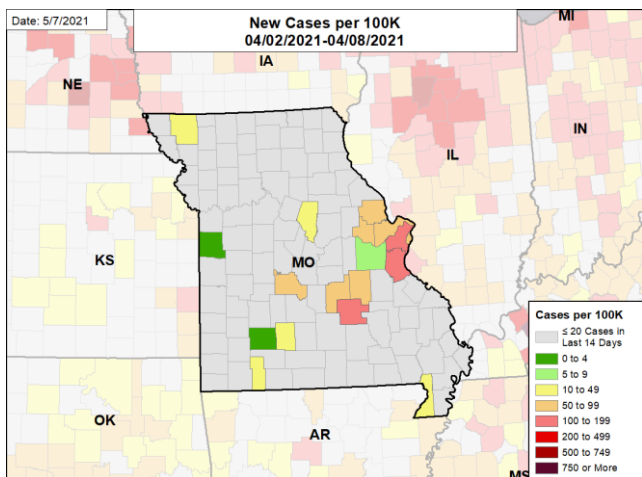
### NEW CASES PER 100,000



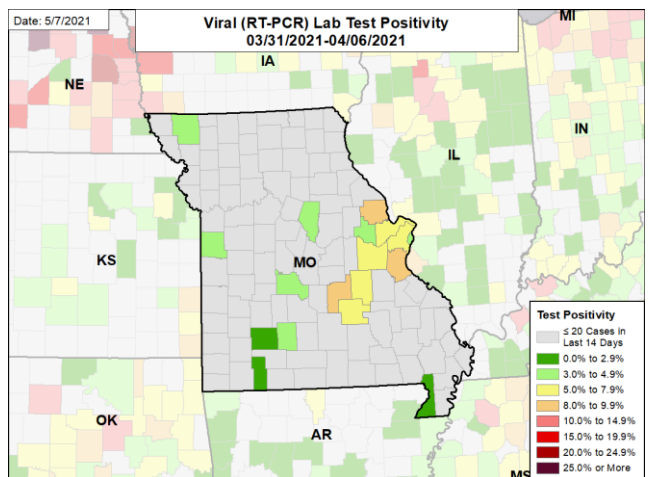
### VIRAL (RT-PCR) LABORATORY TEST POSITIVITY



### NEW CASES PER 100,000 ONE MONTH BEFORE



### VIRAL (RT-PCR) LABORATORY TEST POSITIVITY ONE MONTH BEFORE



#### DATA SOURCES

**Note:** Some dates may have incomplete data due to delays in reporting. Data may be backfilled over time, resulting in week-to-week changes.

**Cases:** County-level data is from a CDC managed aggregate county dataset compiled from state and local health departments; therefore, the values may not match those reported directly by the state. Data is through 5/6/2021. The week one month before is from 4/2 to 4/8.

**Testing:** CELR (COVID-19 Electronic Lab Reporting) state health department-reported data through 5/4/2021. The week one month before is from 3/31 to 4/6.

**METHODS:** Details available on last two pages of report.

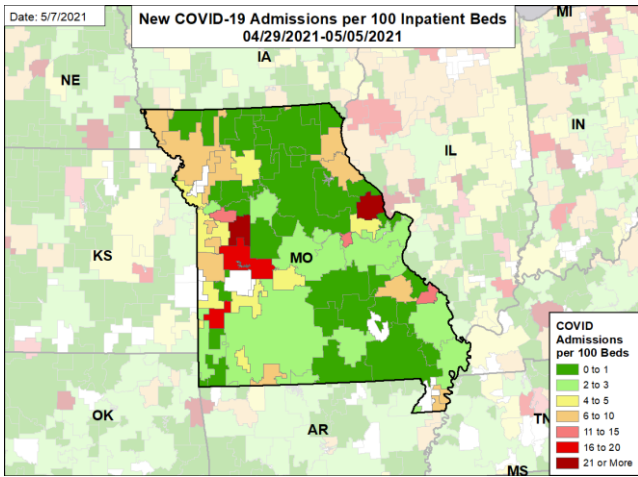


# MISSOURI

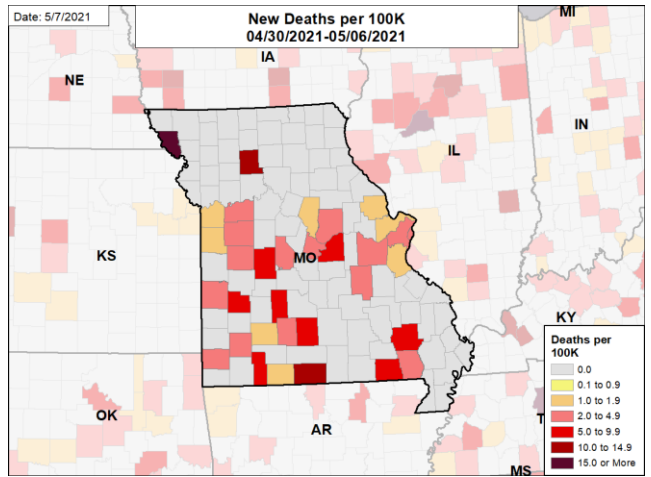
STATE PROFILE REPORT | 05.07.2021

## HOSPITAL ADMISSIONS AND DEATH RATES

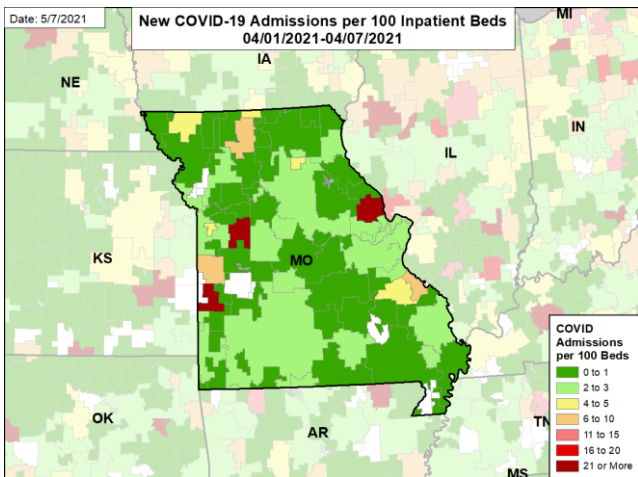
### CONFIRMED NEW COVID-19 ADMISSIONS PER 100 INPATIENT BEDS



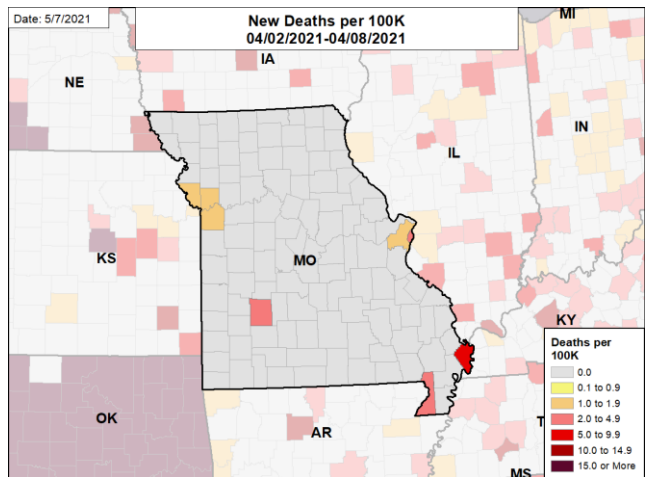
### NEW DEATHS PER 100,000



### CONFIRMED NEW COVID-19 ADMISSIONS PER 100 INPATIENT BEDS ONE MONTH BEFORE



### NEW DEATHS PER 100,000 ONE MONTH BEFORE



#### DATA SOURCES

**Note:** Some dates may have incomplete data due to delays in reporting. Data may be backfilled over time, resulting in week-to-week changes.

**Deaths:** County-level data is from a CDC managed aggregate county dataset compiled from state and local health departments; therefore, the values may not match those reported directly by the state. Data is through 5/6/2021. The week one month before is from 4/2 to 4/8.

**Hospitalizations:** Unified Hospitals Dataset in HHS Protect. Totals include only confirmed COVID-19 admissions. Data is through 5/5/2021. The week one month before is from 4/1 to 4/7.

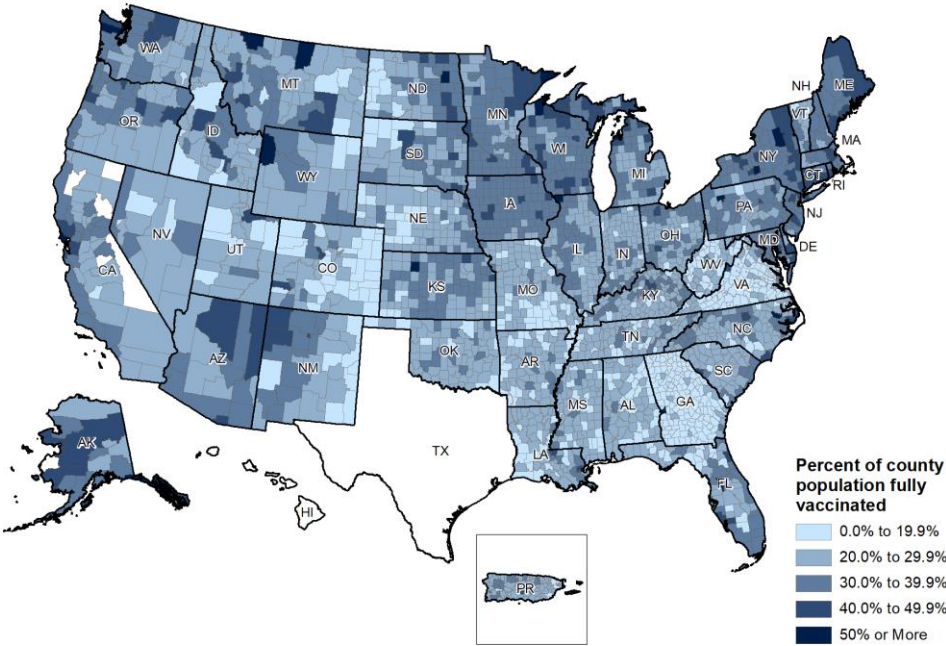
**METHODS:** Details available on last two pages of report.





# National Picture: Vaccinations

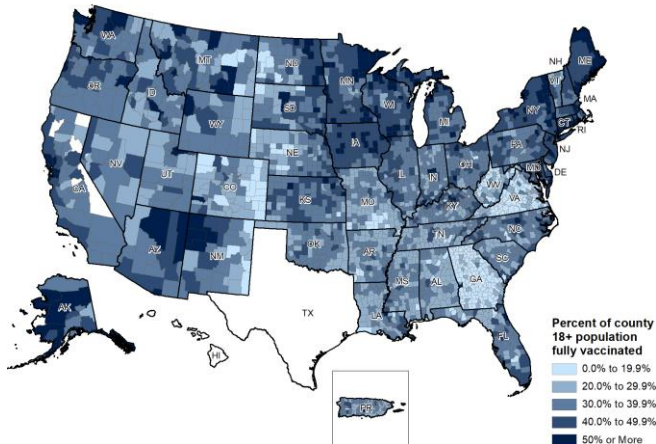
### PERCENT OF POPULATION FULLY VACCINATED



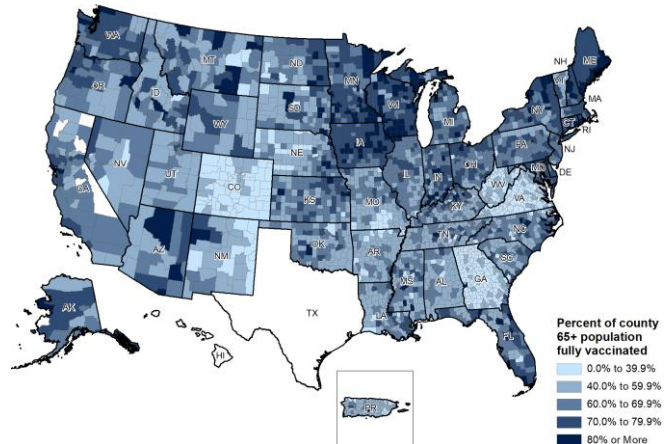
### NATIONAL RANKING OF POPULATION FULLY VACCINATED

National Rank	State	National Rank	State
1	ME	27	KY
2	CT	28	CA
3	VT	29	OR
4	MA	30	NH
5	NM	31	IL
6	HI	32	DC
7	RI	33	NC
8	NJ	34	WV
9	SD	35	FL
10	NY	36	OK
11	WI	37	AZ
12	MD	38	NV
13	IA	39	MO
14	MN	40	IN
15	AK	41	TX
16	VA	42	SC
17	CO	43	WY
18	DE	44	ID
19	NE	45	LA
20	PA	46	PR
21	WA	47	AR
22	MI	48	TN
23	OH	49	GA
24	KS	50	UT
25	MT	51	AL
26	ND	52	MS

### PERCENT OF 18+ POPULATION FULLY VACCINATED



### PERCENT OF 65+ POPULATION FULLY VACCINATED



#### DATA SOURCES

**Vaccinations:** [CDC COVID Data Tracker](#). Data includes the Moderna, Pfizer BioNTech, and J&J/Janssen COVID-19 vaccines and reflects current data available as of 12:22 EDT on 05/07/2021. Data last updated 06:00 EDT on 05/07/2021. Persons who are fully vaccinated include those who have received both doses of the Moderna or Pfizer-BioNTech vaccine as well as those who have received one dose of the J&J/Janssen vaccine. Allocations are made pro rata (equal based on population) from which jurisdictions are then to order. Currently, few persons under age 18 are being vaccinated; this group represents ~22% of the US population and the percentage varies by jurisdiction. The following states have ≤80% completeness reporting vaccinations by county, which may result in underestimates of vaccination data for counties: NM (77%), VT (74%), CO (68%), WV (54%), VA (50%), GA (48%), TX (0%), and HI (0%).

**METHODS:** Details available on last two pages of report.

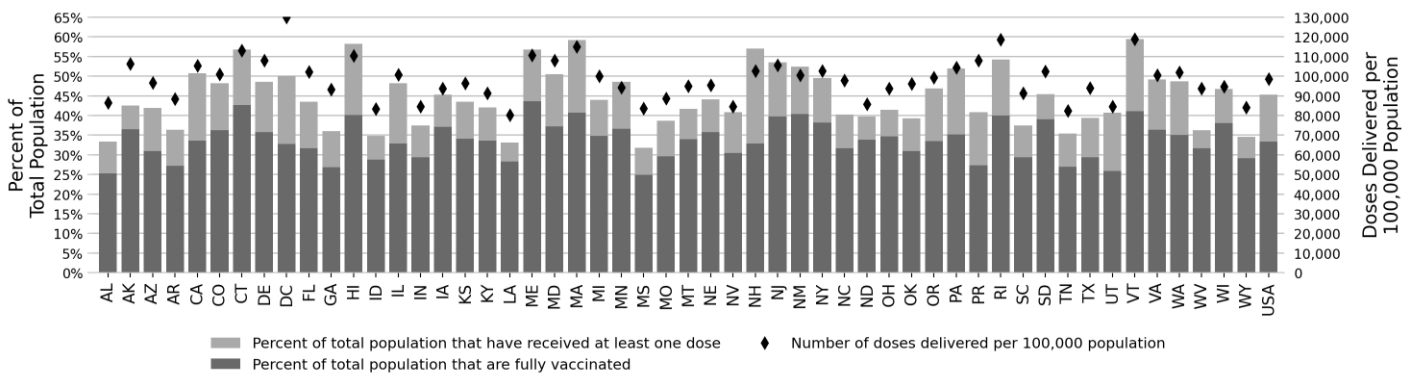
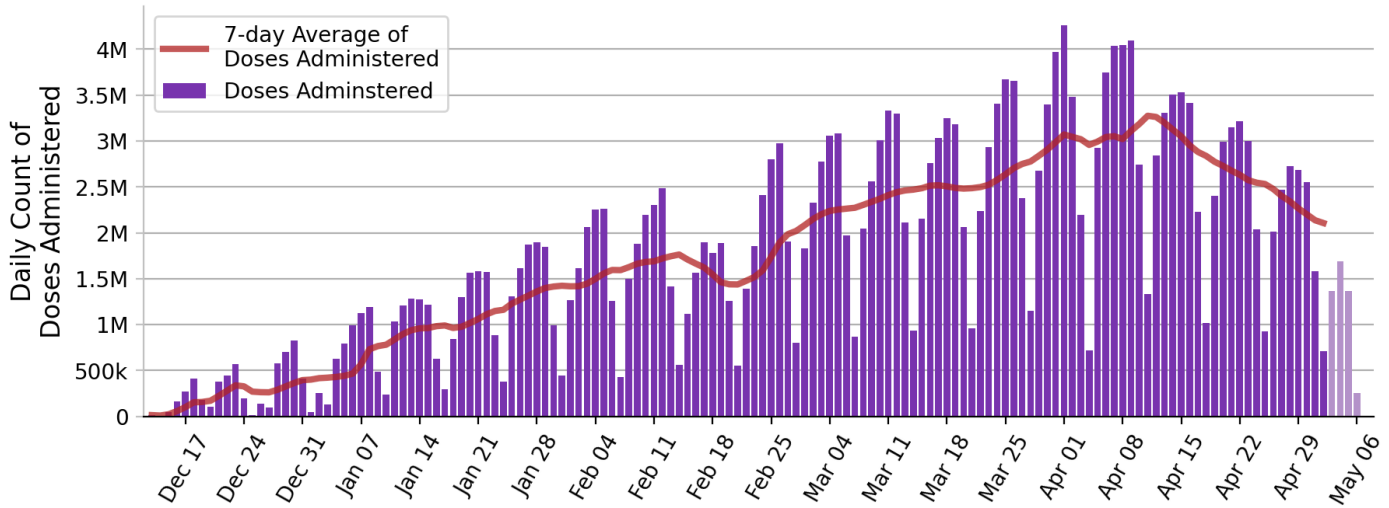


# National Picture: Vaccinations

## NATIONAL COVID-19 VACCINE SUMMARY AS OF 5/7

<b>DOSES DELIVERED</b>	327,124,625 98,533 per 100k	<b>DOSES ADMINISTERED</b>	254,779,333 76,742 per 100k
<b>PEOPLE RECEIVED AT LEAST ONE DOSE</b>	150,416,559 45.3% of total pop.	<b>PEOPLE FULLY VACCINATED</b>	110,874,920 33.4% of total pop.
<b>PEOPLE 18+ RECEIVED AT LEAST ONE DOSE</b>	148,087,774 57.3% of 18+ pop.	<b>PEOPLE 18+ FULLY VACCINATED</b>	109,935,132 42.6% of 18+ pop.
<b>PEOPLE 65+ RECEIVED AT LEAST ONE DOSE</b>	45,543,746 83.1% of 65+ pop.	<b>PEOPLE 65+ FULLY VACCINATED</b>	38,641,055 70.5% of 65+ pop.

## DAILY NATIONAL COUNT OF VACCINE DOSES ADMINISTERED BY DATE OF ADMINISTRATION



### DATA SOURCES

**Vaccinations:** [CDC COVID Data Tracker](#). Data includes the Moderna, Pfizer BioNTech, and J&J/Janssen COVID-19 vaccines and reflects current data available as of 12:22 EDT on 05/07/2021. Data last updated 06:00 EDT on 05/07/2021. Persons who are fully vaccinated include those who have received both doses of the Moderna or Pfizer-BioNTech vaccine as well as those who have received one dose of the J&J/Janssen vaccine. Allocations are made pro rata (equal based on population) from which jurisdictions are then to order. Currently, few persons under age 18 are being vaccinated; this group represents ~22% of the US population and the percentage varies by jurisdiction. Due to delays in reporting, data on doses administered in recent days (as reflected by lighter blue coloring in the Daily National Count figure) may be an underestimate of the actual value.

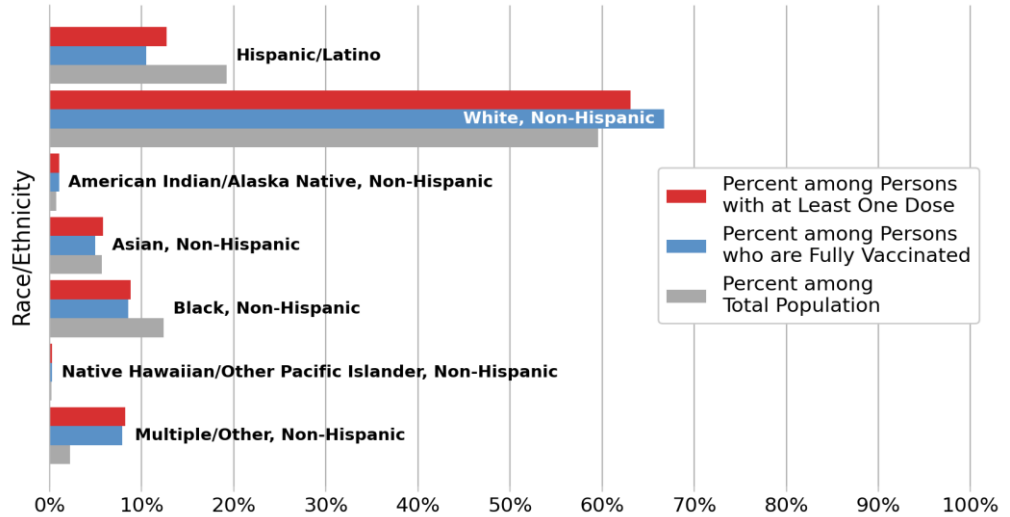
**METHODS:** Details available on last two pages of report.



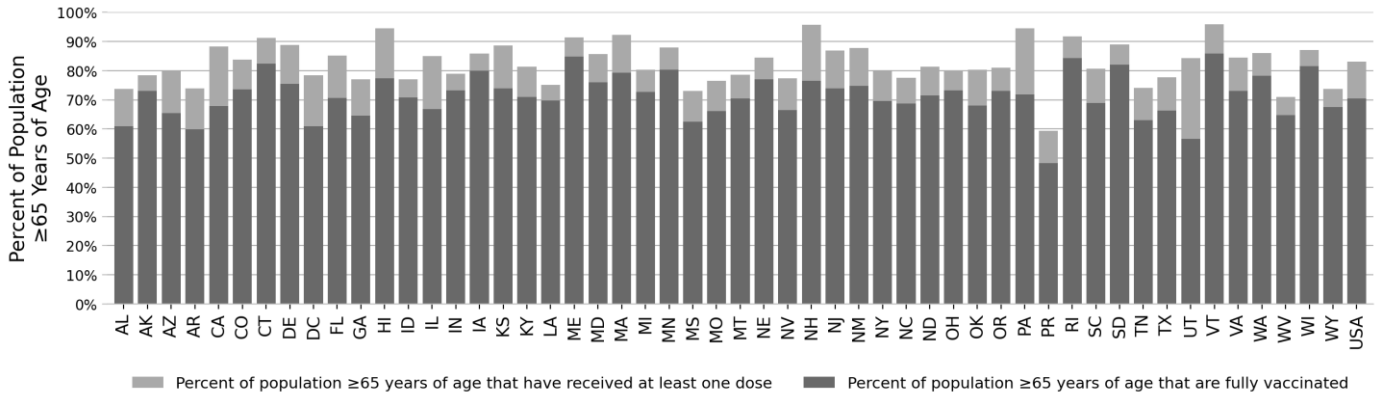
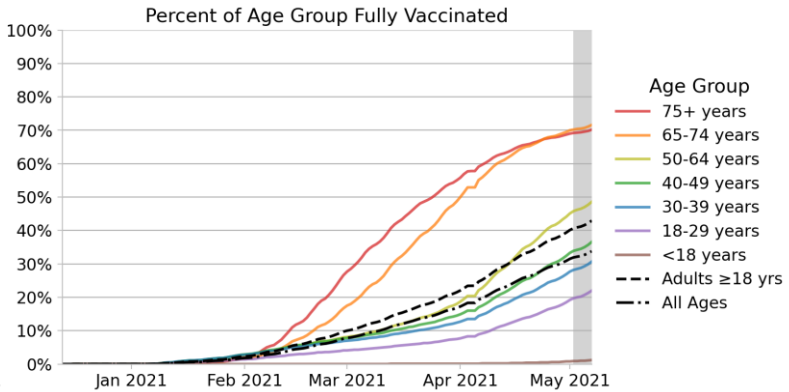
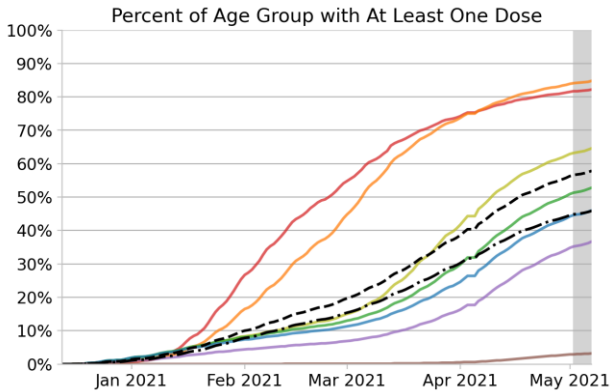
# National Picture: Vaccinations

## NATIONAL SUMMARY OF VACCINATIONS BY RACE/ETHNICITY

55.5% of persons with at least one dose and 58.4% of those who are fully vaccinated have a reported race/ethnicity



## NATIONAL SUMMARY OF VACCINATIONS BY AGE



### DATA SOURCES

**Vaccinations:** [CDC COVID Data Tracker](#). Data includes the Moderna, Pfizer BioNTech, and J&J/Janssen COVID-19 vaccines and reflects current data available as of 12:22 EDT on 05/07/2021. Data last updated 06:00 EDT on 05/07/2021. Persons who are fully vaccinated include those who have received both doses of the Moderna or Pfizer-BioNTech vaccine as well as those who have received one dose of the J&J/Janssen vaccine. Allocations are made pro rata (equal based on population) from which jurisdictions are then to order. Currently, few persons under age 18 are being vaccinated; this group represents ~22% of the US population and the percentage varies by jurisdiction.

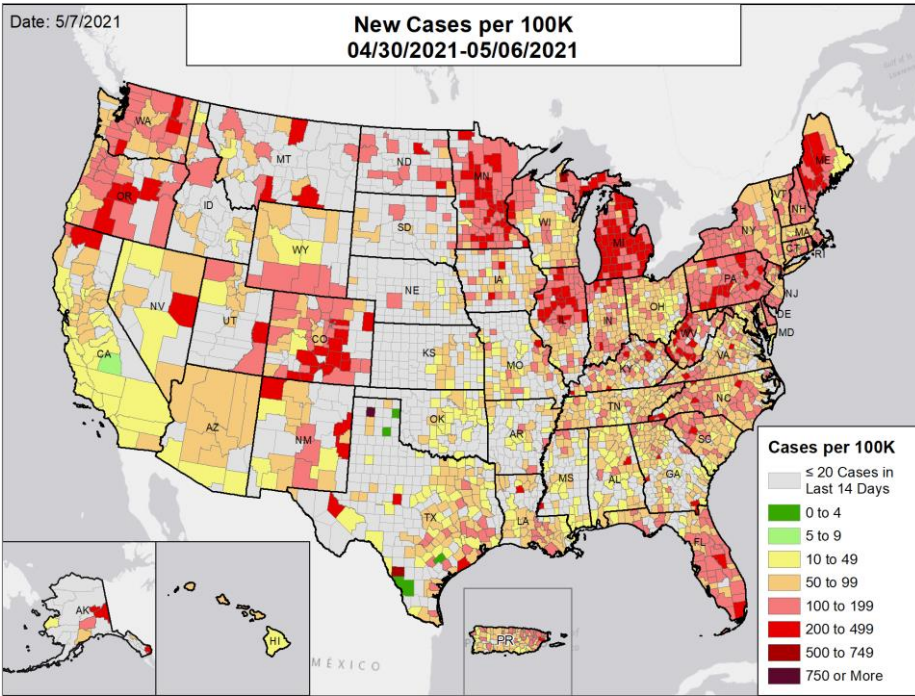
**METHODS:** Details available on last two pages of report.



# National Picture: Cases

### NEW CASES PER 100,000

### NATIONAL RANKING OF NEW CASES PER 100,000



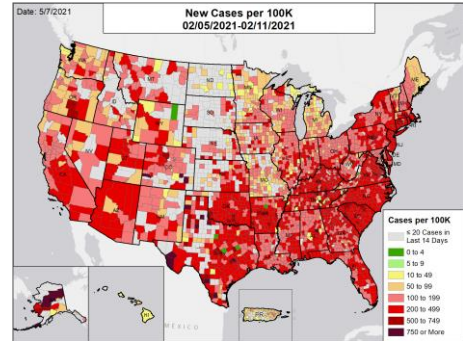
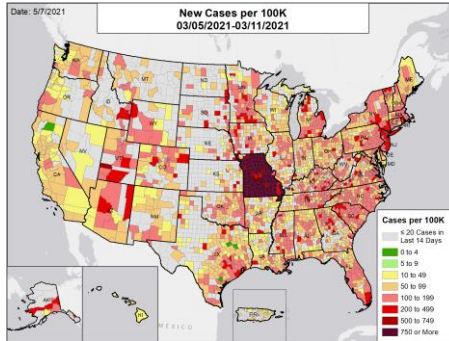
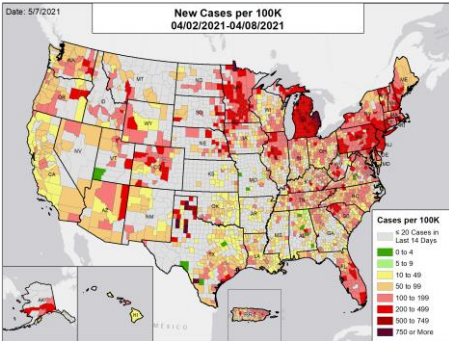
National Rank	State	National Rank	State
1	AL	27	NV
2	CA	28	WI
3	OK	29	MT
4	MS	30	MA
5	KS	31	PR
6	HI	32	KY
7	AR	33	NY
8	TX	34	AK
9	ID	35	NC
10	DC	36	NH
11	VA	37	CT
12	AZ	38	IN
13	NE	39	ND
14	SD	40	NJ
15	LA	41	WA
16	MO	42	OR
17	UT	43	IL
18	SC	44	RI
19	VT	45	FL
20	NM	46	WV
21	MD	47	PA
22	IA	48	DE
23	GA	49	ME
24	WY	50	CO
25	OH	51	MN
26	TN	52	MI

### NEW CASES PER 100,000 IN THE WEEK:

#### ONE MONTH BEFORE

#### TWO MONTHS BEFORE

#### THREE MONTHS BEFORE



## DATA SOURCES

**Note:** Some dates may have incomplete data due to delays in reporting. Data may be backfilled over time, resulting in week-to-week changes.

**Cases:** County-level data is from a CDC managed aggregate county dataset compiled from state and local health departments; therefore, the values may not match those reported directly by the state. State values are aggregated data provided by the states to the CDC. The week one month before is from 4/2 to 4/8; the week two months before is from 3/5 to 3/11; the week three months before is from 2/5 to 2/11.

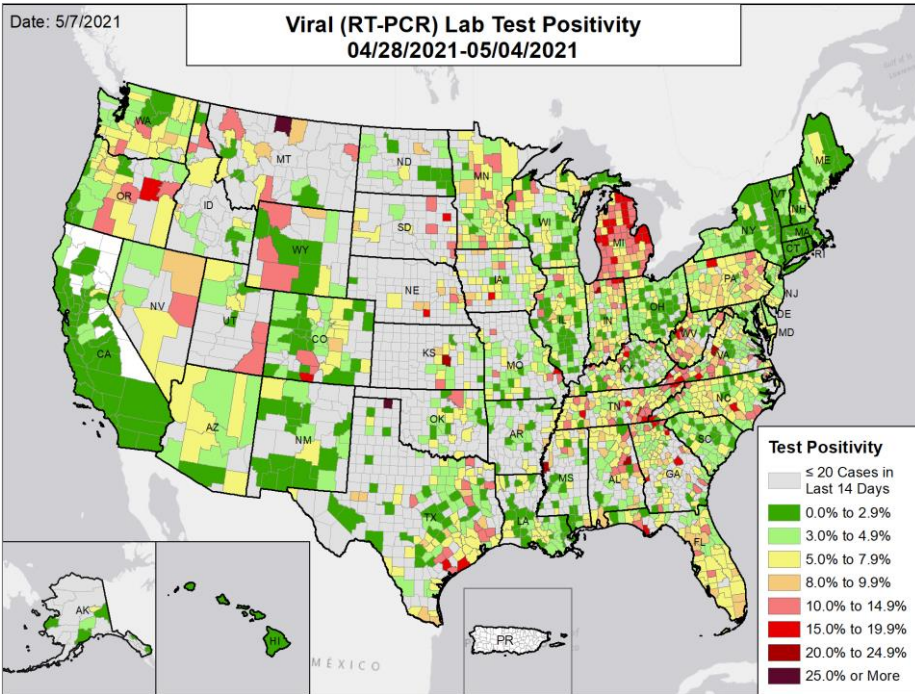
**METHODS:** Details available on last two pages of report.



# National Picture: RT-PCR Test Positivity

## VIRAL (RT-PCR) LAB TEST POSITIVITY

## NATIONAL RANKING OF TEST POSITIVITY



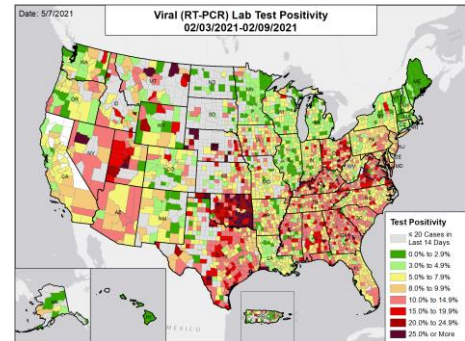
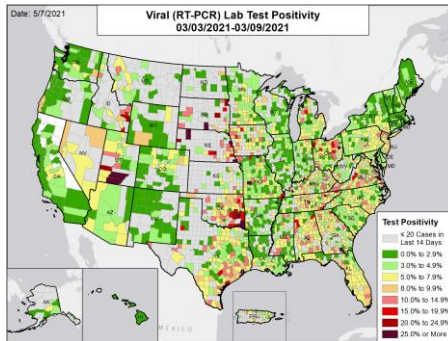
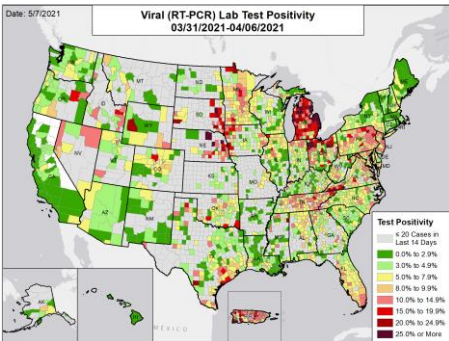
National Rank	State	National Rank	State
1	CA	27	KY
2	VT	28	VA
3	MA	29	TX
4	RI	30	OK
5	HI	31	AZ
6	DC	32	MO
7	CT	33	NJ
8	AK	34	GA
9	NM	35	CO
10	NY	36	MT
11	ME	37	WA
12	LA	38	IN
13	ND	39	NV
14	NH	40	NC
15	WY	41	IA
16	AR	42	MN
17	WI	43	TN
18	IL	44	OR
19	OH	45	AL
20	MD	46	PA
21	UT	47	WV
22	DE	48	NE
23	SC	49	FL
24	MS	50	SD
25	KS	51	MI
26	ID	--	PR

## VIRAL (RT-PCR) LAB TEST POSITIVITY IN THE WEEK:

### ONE MONTH BEFORE

### TWO MONTHS BEFORE

### THREE MONTHS BEFORE



### DATA SOURCES

**Note:** Some dates may have incomplete data due to delays in reporting. Data may be backfilled over time, resulting in week-to-week changes.

**Testing:** Combination of CELR (COVID-19 Electronic Lab Reporting) state health department-reported data and HHS Protect laboratory data (provided directly to Federal Government from public health labs, hospital labs, and commercial labs) through 5/4/2021. The week one month before is from 3/31 to 4/6; the week two months before is from 3/3 to 3/9; the week three months before is from 2/3 to 2/9. Due to a data lag, Puerto Rico's lab testing positivity and test volume cannot be calculated for the last week.

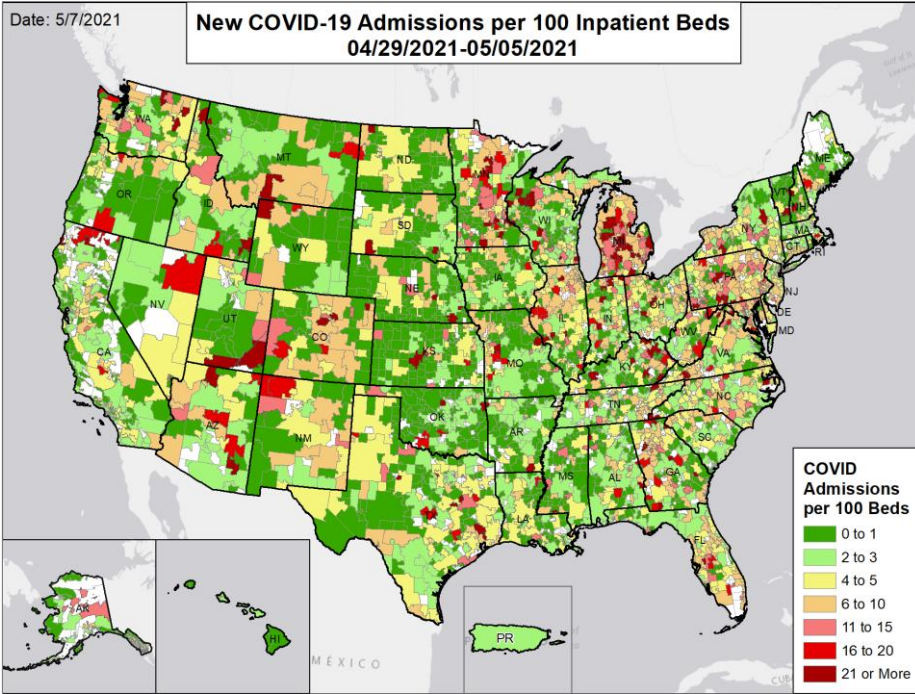
**METHODS:** Details available on last two pages of report.



# National Picture: Hospital Admissions

CONFIRMED NEW COVID-19 ADMISSIONS PER 100 INPATIENT BEDS

NATIONAL RANKING OF CONFIRMED ADMISSIONS PER 100 BEDS



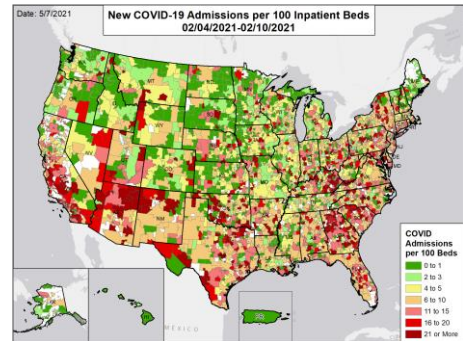
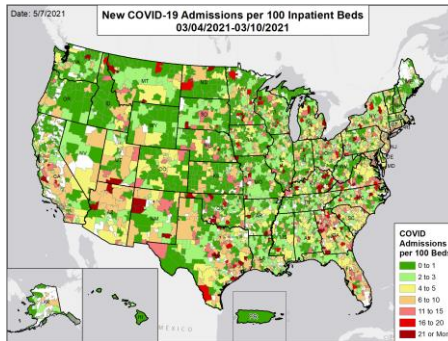
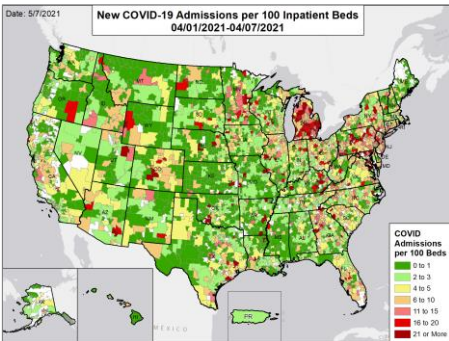
National Rank	State	National Rank	State
1	VT	27	ND
2	HI	28	MT
3	PR	29	NC
4	OK	30	VA
5	RI	31	OR
6	KS	32	TX
7	NE	33	WA
8	MS	34	NY
9	MA	35	NV
10	AR	36	OH
11	LA	37	DE
12	SD	38	NM
13	CA	39	IN
14	AK	40	WV
15	WY	41	WI
16	IA	42	NJ
17	ID	43	IL
18	UT	44	CT
19	NH	45	MN
20	AL	46	FL
21	SC	47	PA
22	MO	48	GA
23	TN	49	KY
24	DC	50	MD
25	ME	51	CO
26	AZ	52	MI

CONFIRMED NEW COVID-19 ADMISSIONS PER 100 INPATIENT BEDS IN THE WEEK:

ONE MONTH BEFORE

TWO MONTHS BEFORE

THREE MONTHS BEFORE



## DATA SOURCES

**Note:** Some dates may have incomplete data due to delays in reporting. Data may be backfilled over time, resulting in week-to-week changes.

**Admissions:** Unified Hospitals Dataset in HHS Protect through 5/5/2021. Totals include only confirmed COVID-19 admissions. Puerto Rico is shown at the territory level as HSAs are not defined. The week one month before is from 4/1 to 4/7; the week two months before is from 3/4 to 3/10; the week three months before is from 2/4 to 2/10.

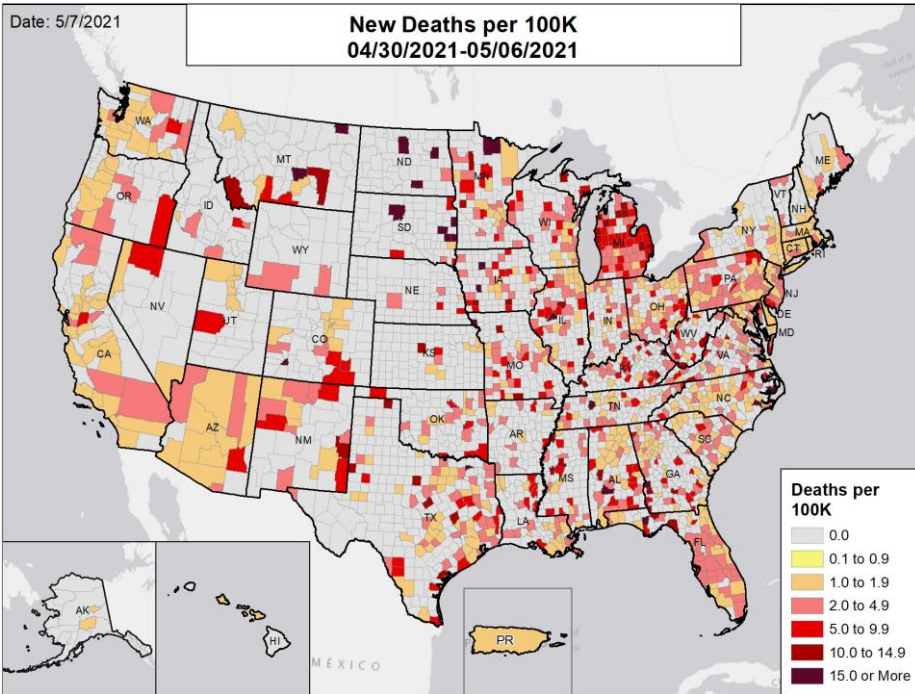
**METHODS:** Details available on last two pages of report.



# National Picture: Deaths

## NEW DEATHS PER 100,000

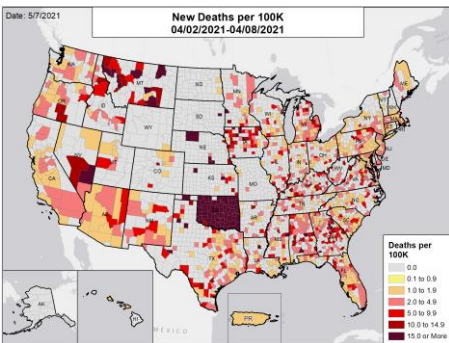
## NATIONAL RANKING OF NEW DEATHS PER 100,000



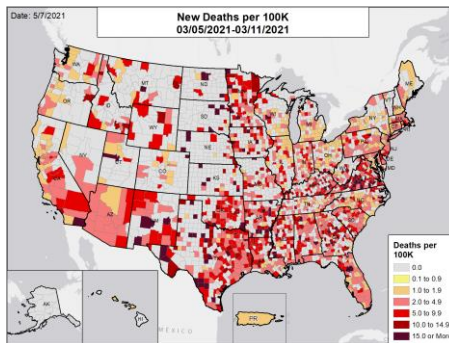
National Rank	State	National Rank	State
1	HI	27	NV
2	AK	28	LA
3	MS	29	CO
4	AL	30	TX
5	ID	31	VA
6	VT	32	NC
7	DE	33	WI
8	NE	34	GA
9	WY	35	MO
10	OR	36	CT
11	UT	37	RI
12	DC	38	OH
13	KS	39	MN
14	AR	40	CA
15	NH	41	MD
16	ME	42	NM
17	OK	43	IA
18	SC	44	PR
19	IN	45	SD
20	TN	46	NY
21	AZ	47	IL
22	WA	48	PA
23	ND	49	FL
24	MT	50	WV
25	KY	51	NJ
26	MA	52	MI

## NEW DEATHS PER 100,000 IN THE WEEK:

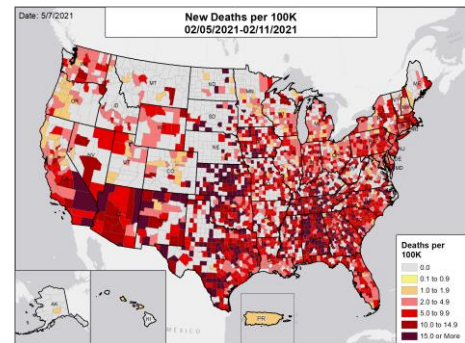
### ONE MONTH BEFORE



### TWO MONTHS BEFORE



### THREE MONTHS BEFORE



### DATA SOURCES

**Note:** Some dates may have incomplete data due to delays in reporting. Data may be backfilled over time, resulting in week-to-week changes.

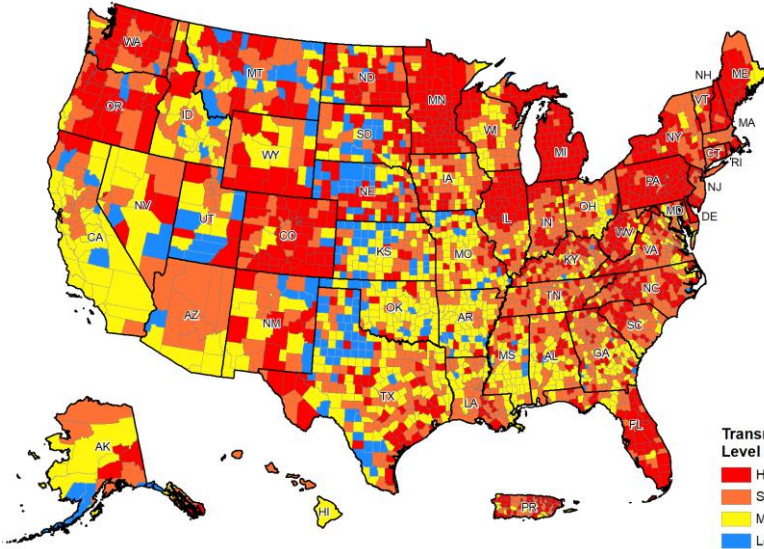
**Deaths:** County-level data is from a CDC managed aggregate county dataset compiled from state and local health departments; therefore, the values may not match those reported directly by the state. State values are aggregated data provided by the states to the CDC. Puerto Rico is shown at the territory level as deaths are not reported at the municipio level. As of 3/2/2021, Ohio changed their method of reporting COVID-19 deaths and will report deaths on the day of death, not the day of report, which could result in a fluctuation in the number of deaths from recent weeks due to delayed reporting. The week one month before is from 4/2 to 4/8; the week two months before is from 3/5 to 3/11; the week three months before is from 2/5 to 2/11.

**METHODS:** Details available on last two pages of report.



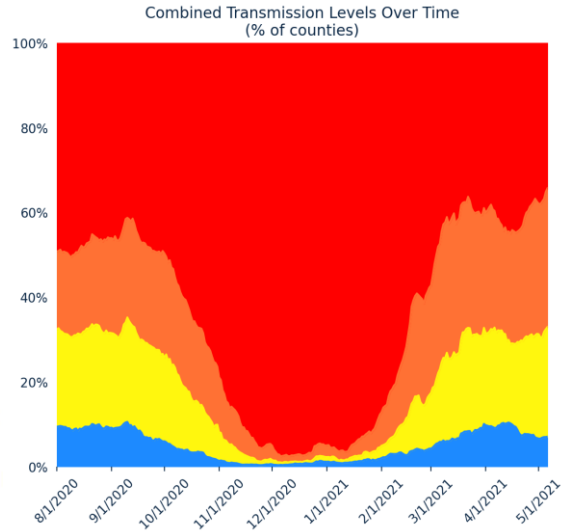
# National Picture: Community Transmission

## COMMUNITY TRANSMISSION BY COUNTY



**Transmission Level**

- High
- Substantial
- Moderate
- Low



## COUNTIES BY COMMUNITY TRANSMISSION INDICATOR

CASES PER 100K	0 TO 9	10 TO 49	50 TO 99	100 +
# OF COUNTIES (CHANGE)	252 (0)	912 (↑79)	1111 (↑24)	945 (↓103)
% OF COUNTIES (CHANGE)	7.8% (0.0%)	28.3% (↑2.5%)	34.5% (↑0.7%)	29.3% (↓3.2%)
TEST POSITIVITY	0.0% TO 4.9%	5.0% TO 7.9%	8.0% TO 9.9%	10.0% +
# OF COUNTIES (CHANGE)	1853 (↑25)	804 (↑30)	204 (↓43)	359 (↓12)
% OF COUNTIES (CHANGE)	57.5% (↑0.8%)	25.0% (↑0.9%)	6.3% (↓1.3%)	11.1% (↓0.4%)

## COUNTIES BY COMBINED TRANSMISSION LEVEL

CATEGORY	LOW TRANSMISSION BLUE	MODERATE TRANSMISSION YELLOW	SUBSTANTIAL TRANSMISSION ORANGE	HIGH TRANSMISSION RED
# OF COUNTIES (CHANGE)	228 (↑5)	833 (↑58)	1055 (↑17)	1104 (↓80)
% OF COUNTIES (CHANGE)	7.1% (↑0.2%)	25.9% (↑1.8%)	32.8% (↑0.5%)	34.3% (↓2.5%)

### DATA SOURCES

Maps and figures reflect 7-day average of data from 4/30-5/6 (cases), 4/28-5/4 (tests).

**Note:** Most recent days may have incomplete reporting.

**Cases:** County-level data is from a CDC managed aggregate county dataset compiled from state and local health departments; therefore, the values may not match those reported directly by the state Data is through 5/6/2021.

**Testing:** Combination of CELR (COVID-19 Electronic Lab Reporting) state health department-reported data and HHS Protect laboratory data (provided directly to Federal Government from public health labs, hospital labs, and commercial labs). Data is through 5/4/2021. Puerto Rico has not submitted lab testing data since 4/25; therefore, positivity cannot be calculated for the last week.

**County Percentages:** Based on a denominator of 3,220 county/county-equivalents, including states, the District of Columbia, and Puerto Rico municipios.

**Combined Transmission Level:** If the two indicators suggest different transmission levels, the higher level is selected. Previous week transmission levels are computed based on current data. See [CDC COVID Data Tracker](#).

**METHODS:** Details available on last two pages of report.





# DATA SOURCES & METHODS

STATE PROFILE REPORT | 05.07.2021

- Some dates may have incomplete data due to delays and/or differences in state reporting. Data may be backfilled over time, resulting in week-to-week changes. It is critical that states provide as up-to-date data as possible. Figures and values may also differ from state reports due to differing methodologies.
- All population values are vintage 2019 US Census data.
- **Cases and Deaths:** County-level data is from a CDC-managed aggregate county dataset compiled from state and local health departments; therefore, the values may not match those reported directly by the state. State values are aggregated data provided by the states to the CDC. Data is as of 12:24 EDT on 05/07/2021.
  - Historical reports of cases and deaths — for which backfill dates are not available — that exceed 1% of the total new cases or deaths reported in the US that day have been excluded from state daily and weekly trends. However, these are still present in county-level data. Historical reports in the last two weeks (4/23/21 – 5/6/21) are:
    - Alabama cases: 129 on 5/6
    - Kentucky deaths: 17 on 4/23; 11 on 4/24; 9 on 4/25; 7 on 4/26; 7 on 4/27; 2 on 4/29; 3 on 5/1; 1 on 5/2; 3 on 5/3; and 1 on 5/6
    - Michigan deaths: 91 on 4/24; 48 on 4/27; 78 on 4/29; 98 on 5/1; 51 on 5/4; and 92 on 5/6
    - Mississippi deaths: 9 on 4/26; 1 on 4/27; 1 on 4/29; 5 on 5/2; 11 on 5/3; 1 on 5/4; 2 on 5/5; and 1 on 5/6
    - North Carolina cases: 540 on 4/26
    - Pennsylvania cases: 280 on 4/30
    - Texas cases: 166 on 4/23; 167 on 4/24; 63 on 4/25; 336 on 4/26; 1,032 on 4/27; 807 on 4/28; 280 on 4/29; 191 on 4/30; 185 on 5/1; 43 on 5/2; 20 on 5/3; 434 on 5/4; 216 on 5/5; and 365 on 5/6
- **Testing:** The data presented represent viral COVID-19 laboratory diagnostic and screening test (reverse transcription polymerase chain reaction, RT-PCR) results—not individual people—and exclude antibody and antigen tests, unless stated otherwise. CELR (COVID-19 Electronic Lab Reporting) state health department-reported data are used to describe county-level viral COVID-19 RT-PCR result totals when information is available on patients' county of residence or healthcare providers' practice location. HHS Protect laboratory data (provided directly to Federal Government from public health labs, hospital labs, and commercial labs) are used otherwise. Because the data are deidentified, total RT-PCR tests are the number of tests performed, not the number of individuals tested. RT-PCR test positivity rate is the number of positive tests divided by the number of tests performed and resulted. For test positivity, last week data are from 4/28 to 5/4; previous week data are from 4/21 to 4/27; the week one month before data are from 3/31 to 4/6. For number of tests, last week data are from 4/24 to 4/30; previous week data are from 4/17 to 4/23. HHS Protect data is recent as of 10:04 EDT on 05/07/2021. Testing data are inclusive of everything received and processed by the CELR system as of 19:00 EDT on 05/06/2021. Puerto Rico has not submitted lab testing data since 4/25; therefore, positivity cannot be calculated for the last week.
- **Hospitalizations:** Unified Hospitals Dataset in HHS Protect. These data exclude psychiatric, rehabilitation, and religious non-medical hospitals. In addition, hospitals explicitly identified by states/regions as those from which we should not expect reports were excluded from the percent reporting figure. The data presented represents raw data provided; we are working diligently with state liaisons to improve reporting consistency. Data is recent as of 13:03 EDT on 05/07/2021.
- **Hospital PPE:** Unified Hospitals Dataset in HHS Protect. This figure may differ from state data due to differences in hospital lists and reporting between federal and state systems. These data exclude psychiatric, rehabilitation, and religious non-medical hospitals. Hospitals explicitly identified by states/regions as those from which we should not expect reports were excluded from the percent reporting figure. Data is recent as of 13:07 EDT on 05/07/2021.
- **Skilled Nursing Facilities:** National Healthcare Safety Network (NHSN). Data report resident and staff cases independently. Quality checks are performed on data submitted to the NHSN. Data that fail these quality checks or appear inconsistent with surveillance protocols may be excluded from analyses. Data presented in this report are more recent than data publicly posted by CMS. Last week is 4/26-5/2, previous week is 4/19-4/25.
- **State, County, and Metro Area Community Transmission Levels**
  - **High Transmission:** Those states, CBSAs, and counties that during the last week reported 100 or more cases per 100,000 population or a lab test positivity at or above 10.0%.
  - **Substantial Transmission:** Those states, CBSAs, and counties that during the last week reported from 50 to 99 cases per 100,000 population or a lab test positivity from 8.0% to 9.9%.
  - **Moderate Transmission:** Those states, CBSAs, and counties that during the last week reported from 10 to 49 cases per 100,000 population or a lab test positivity from 5.0% to 7.9%.
  - **Low Transmission:** Those states, CBSAs, and counties that during the last week reported from 0 to 9 cases per 100,000 population or a lab test positivity from 0.0% to 4.9%.
  - If the two indicators suggest different transmission levels, the higher level is selected. Previous week transmission levels are computed based on current data. See [CDC COVID Data Tracker](#).
- **Shortages:** Unified Hospitals Dataset in HHS Protect. These data exclude psychiatric, rehabilitation, and religious non-medical hospitals. Includes hospitals currently reporting a staffing shortage. Low supply is defined as a hospital reporting they are not able to maintain a 3-day supply of N95s, face masks, gloves, gowns, or eye protection. Data is recent as of 13:07 EDT on 05/07/2021.
- **Vaccinations:** [CDC COVID Data Tracker](#). Data includes the Moderna, Pfizer BioNTech, and J&J/Janssen COVID-19 vaccines and reflects current data available as of 12:22 EDT on 05/07/2021. Data last updated 06:00 EDT on 05/07/2021. Persons who are fully vaccinated include those who have received both doses of the Moderna or Pfizer-BioNTech vaccine as well as those who have received one dose of the J&J/Janssen vaccine. Allocations are made pro rata (equal based on population) from which jurisdictions are then ordered. Because COVID-19 vaccines available in the U.S. are authorized only for persons ≥16 years of age (Pfizer-BioNTech) or ≥18 years of age (Moderna and J&J/Janssen), currently few persons under age 18 are being vaccinated; this group represents ~22% of the U.S. population and the percentage varies by jurisdiction. The following states have ≥80% completeness reporting vaccinations by county, which may result in underestimates of vaccination data for counties: NM (77%), VT (74%), CO (68%), WV (54%), VA (50%), GA (48%), TX (0%), and HI (0%).
- **Variants:** Data from [CDC COVID Data Tracker](#). Variant proportions are based on representative CDC sequence data (NS3 + CDC-funded contract sequencing) collected over a 4-week period ending April 10, 2021 for states with at least 300 sequences. Proportions are calculated using empirical (unweighted) data, which are subject to change over time and will be updated as more data become available. Proportions of variants do not represent the total number that may be circulating in the United States and may not match cases reported by states, territories, tribes, and local officials. For states and jurisdictions not listed, CDC has insufficient genomic surveillance data for the specified time period. Data updated by 19:00 ET on 5/4. Data pulled 12:11 EDT on 05/06/2021.



# DATA SOURCES & METHODS

STATE PROFILE REPORT | 05.07.2021

Color threshold values are rounded before color classification

Metric	Dark Green	Light Green	Yellow	Orange	Light Red	Red	Dark Red	Darkest Red	
New cases per 100,000 population per week	≤4	5 – 9	10 – 49	50 – 99	100 – 199	200 – 499	500 – 749	≥750	
Percent change in new cases per 100,000 population	≤-26%	-25% – -11%	-10% – 0%	1% – 10%	11% – 99%	100% – 999%	≥1000%		
Diagnostic test result positivity rate	≤2.9%	3.0% – 4.9%	5.0% – 7.9%	8.0% – 9.9%	10.0% – 14.9%	15.0% – 19.9%	20.0% – 24.9%	≥25.0%	
Change in test positivity	≤-2.1%	-2.0% – -0.6%	-0.5% – 0.0%	0.1% – 0.5%	0.6% – 2.0%		≥2.1%		
Total diagnostic tests resulted per 100,000 population per week	≥5000	3000 – 4999	2000 – 2999	1000 – 1999	500 – 999		≤499		
Percent change in tests per 100,000 population	≥26%	11% – 25%	1% – 10%	-10% – 0%	-25% – -11%		≤-26%		
COVID-19 deaths per 100,000 population per week	0.0		0.1 – 0.9	1.0 – 1.9	2.0 – 4.9	5.0 – 9.9	10.0 – 14.9	≥15.0	
Percent change in deaths per 100,000 population	≤-26%	-25% – -11%	-10% – 0%	1% – 10%	11% – 25%		≥26%		
Skilled Nursing Facilities with at least one resident COVID-19 case, death	0%		1% – 5%		≥6%				
Change in SNFs with at least one resident COVID-19 case, death	≤-2%		-1% – 1%		≥2%				
Confirmed and suspected new COVID-19 hospital admissions per 100 beds	≤2	3 – 5	6 – 10	11 – 15	16 – 20	21 – 25	≥26		
Confirmed new COVID-19 hospital admissions per 100 beds	≤1	2 – 3	4 – 5	6 – 10	11 – 15	16 – 20	≥21		
Change in new COVID-19 hospital admissions per 100 beds	≤-26%	-25% – -11%	-10% – 0%	1% – 10%	11% – 25%		≥26%		
Percent of hospitals with supply/staff shortages	≤9%		10% – 19%	20% – 29%	30% – 39%		≥40%		
Change in percent of hospitals with supply/staff shortages	≤-10%	-9% – -5%	-4% – 0%	1% – 4%	5% – 9%		≥10%		
Percent of Population Fully Vaccinated (State Level)	0.0 – 25.0%		25.1 – 30.0%		30.1 – 35.0%		35.1 – 40.0%		≥40.1%