



COOPERATIVE STRATEGIES

COMPLETE FINANCIAL & DEMOGRAPHIC PLANNING FOR EDUCATION

COLUMBIA PUBLIC SCHOOLS
ELEMENTARY ATTENDANCE
AREA UPDATE

APRIL 2011

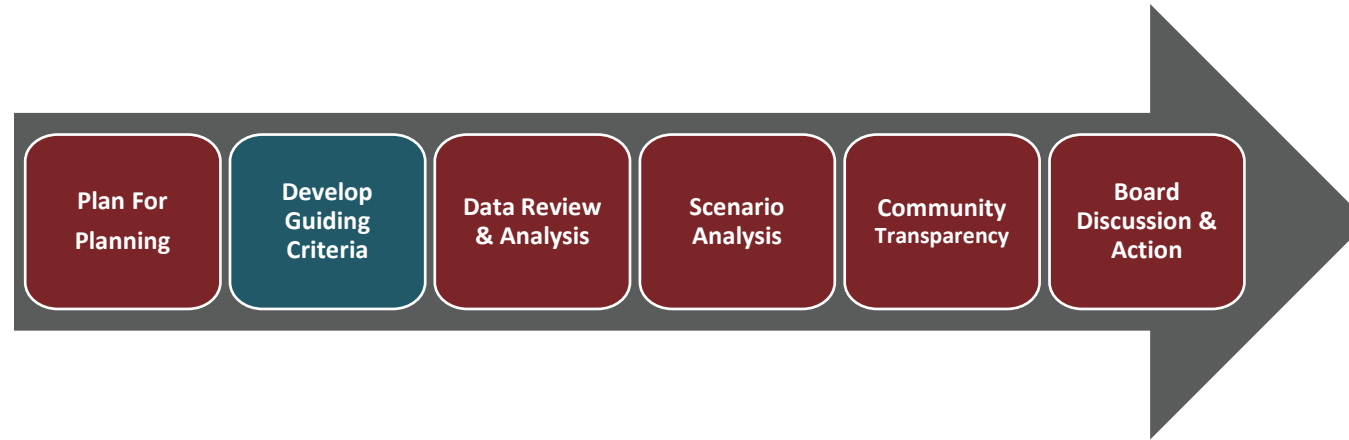
▶ **BOUNDARY PLANNING
PROCESS**



► PROJECT TIMELINE



► DEVELOP CRITERIA

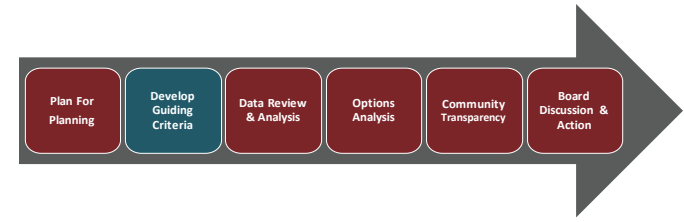


WHAT IS THE PURPOSE OF CREATING CRITERIA?

- Establish criteria and guiding principles for the development of boundary scenarios
- Without guiding principles, there is no way to limit the number of scenarios or the viability of those scenarios
- Criteria and guidelines gives us clear direction to develop scenarios that will be viable and acceptable to the School Board



▶ OUR GUIDING PRINCIPALS

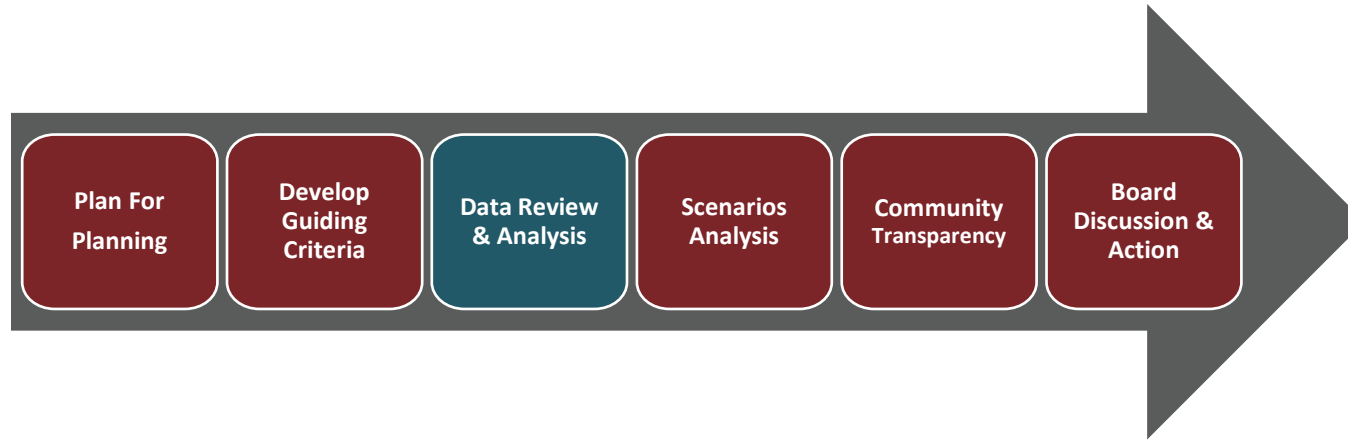


GUIDING PRINCIPALS:

- Attendance areas do change and will continue to change. This work is part of a regular review of district enrollment patterns.
- The attendance area should anticipate future growth of neighborhoods. A walkable and bikeable school is important, but may not always be possible.
- The attendance area seeks to reflect the composition of the Columbia Public School community.
- The board recognizes the power of a school to create community. Accessibility for families is important (volunteering and attending school functions are easier when the school is near).
- Consider time students spend on a bus and distance traveled to and from school.
- Consider attendance areas boundary lines that follow natural/manmade boundaries.
- Consider a transfer policy that allows 5th graders to remain at their previous school and policies that allow siblings to remain.



► DATA REVIEW & ANALYSIS



BACKGROUND DATA DEVELOPMENT

- Compilation of Data:
 - Capacity
 - Facilities & Programs
 - Demographics
 - Other Relevant Data

OPTION A (PREVIOUSLY OPTION 3)

Feeder Pattern

Benefits:

- Moves 3% of students at lower ES level
- Maintains walkability for most families
- Maximizes walkability at upper elementary level

Challenges:

- Feeder Split (24% - 76% @ W/PES)
- Clairemont is under-utilized while Oakhurst is over-utilized
- Utilization is imbalanced at upper elementary level

Option A	Capacity	Enrollment (SY1617 EP Report) K-2 & 3-5				Utilization (SY1617 EP Report) K-2 & 3-5				CURRENT + or - seats	2018-19 + or - seats	2019-20 + or - seats	2020-21 + or - seats
		CURRENT	2018-19	2019-20	2020-21	CURRENT	2018-19	2019-20	2020-21				
Lower Elementary Schools													
Clairemont	334	350	312	232	237	109%	93%	69%	71%	▼ -16	▲ 22	▲ 102	▲ 97
Glenwood	293	313	327	262	269	109%	112%	89%	92%	▼ -20	▼ -34	▲ 31	▲ 24
Oakhurst	418	506	538	478	490	121%	129%	114%	117%	▼ -88	▼ -120	▼ -60	▼ -72
Westchester	272	306	332	257	263	113%	122%	94%	99%	▼ -34	▼ -60	▲ 15	▲ 9
Winmona Park	293	459	431	254	259	157%	147%	87%	88%	▼ -166	▼ -138	▲ 39	▲ 34
TOTAL	1610	1934	1940	1483	1518	120%	120%	92%	94%	▼ -324	▼ -330	▲ 127	▲ 92
Upper Elementary Schools													
FAVE	661	949	957	669	693	144%	145%	101%	102%	▼ -288	▼ -296	▼ -8	▼ -32
Talley St.	750	-	-	857	887	-	-	114%	118%	-	-	▼ -107	▼ -137
TOTAL	1411	949	957	1526	1580	144%	145%	108%	112%	▼ -288	▼ -296	▼ -115	▼ -169

Walkability Factor		
School	% of Students within 1 mile of School	Average %
Clairemont	98%	86%
Glenwood	87%	
Oakhurst	94%	
Winmona	86%	
Westchester	60%	
Talley	26%	
FAVE	68%	

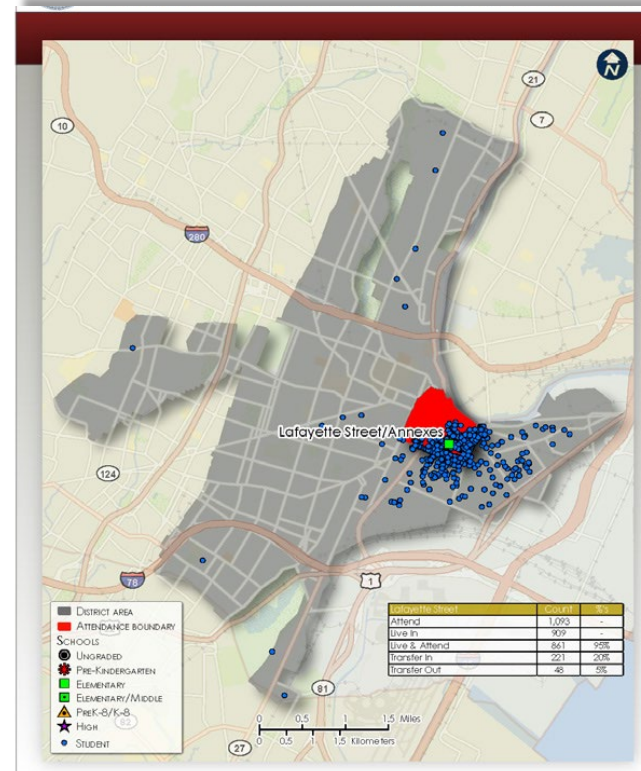
CITY SCHOOLS OF DECATUR indicates the enrollment & utilization for the current (K-3, 4-5) configuration

► scenarios ANALYSIS



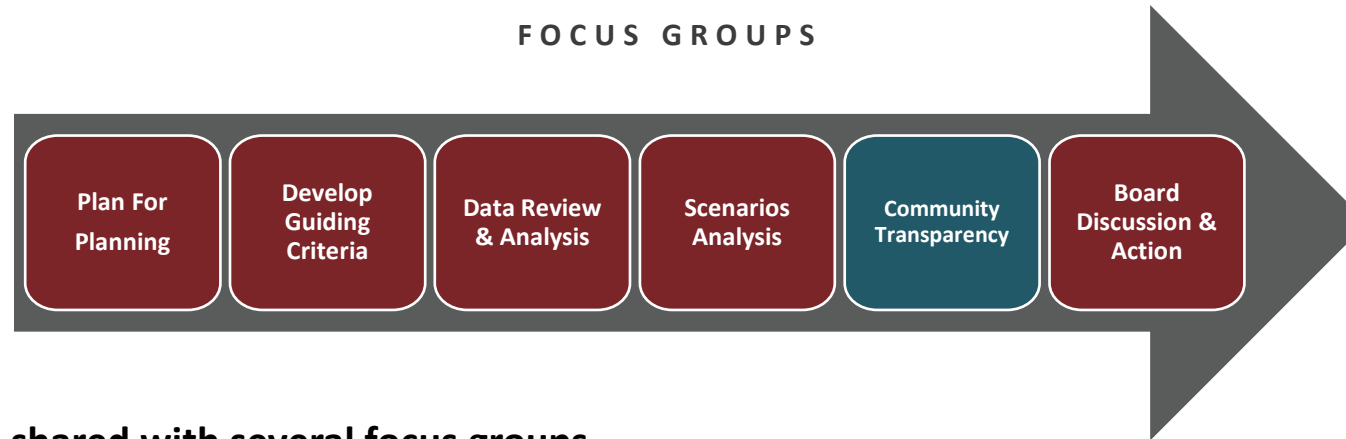
An internal working group will be used to develop preliminary working scenarios to present to the community.

- This group will utilize GIS and other background information to develop scenarios.
- Impacts to utilization and numbers of students impacted will be calculated during meetings.



► COMMUNITY TRANSPARENCY

FOCUS GROUPS



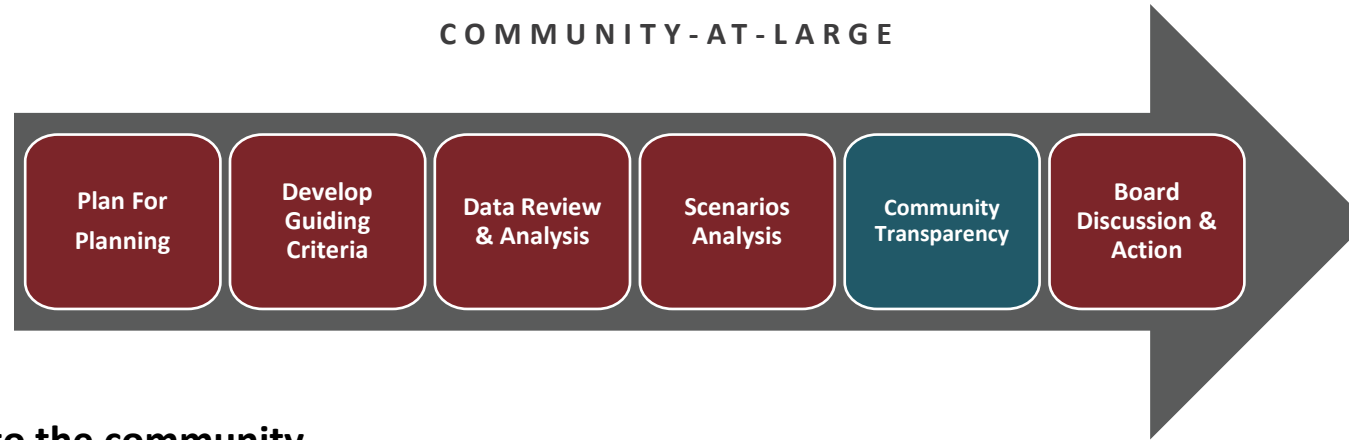
Preliminary scenarios will be shared with several focus groups.

- Focus groups will provide feedback to help refine scenarios.
- Focus groups composed of:
 - Parents
 - Non-Parents & Community Members
 - Real Estate Agents & Developers
 - Faculty / Staff
- Finalized scenarios will be shared with the community at large.



► COMMUNITY TRANSPARENCY

COMMUNITY-AT-LARGE



Scenarios will be presented to the community at large for feedback.

- Process and scenarios will be presented to the school board and will be immediately available online.
- Community members will be able to view online the online presentation and complete an online survey.
- Community Open Houses – 4/13-15
- All feedback will be collected and compiled into a results report.



► COMMUNITY TRANSPARENCY PROJECT WEBSITE



Project Website

- School Board Meeting agendas & presentations
- Background Report
- Community Meeting Documents & Summary of Results
- Timeline
- School locator for presented scenarios

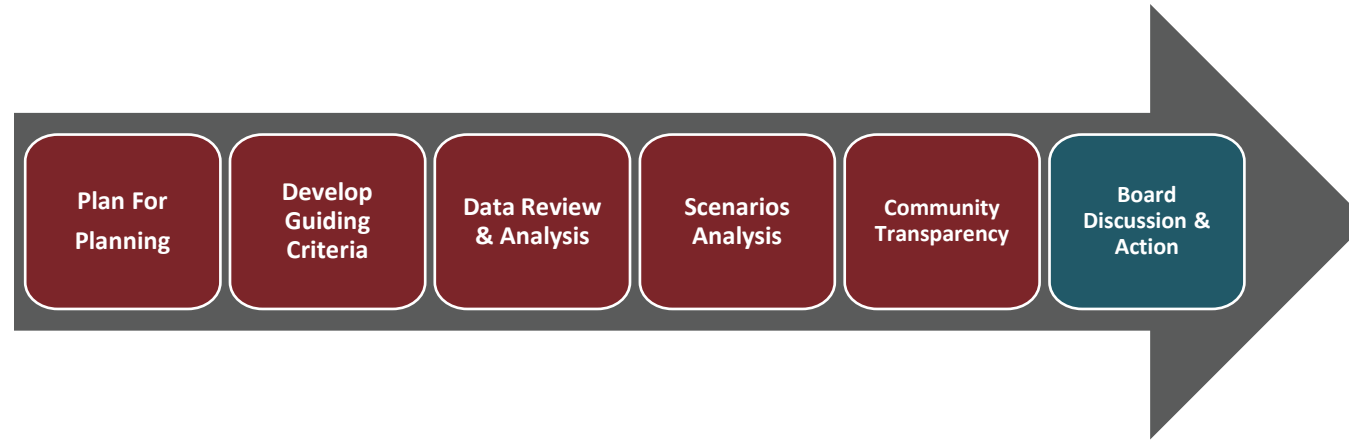
The screenshot shows the Columbia Public Schools website interface. At the top, there is a search bar and navigation icons for Lunch, Calendar, Contact, and Families Portal. Below this is a main navigation menu with links for Home, About Us, Departments, Families, Community, Board of Education, Employment, and Calendar. The main content area is divided into several sections:

- Quick Links:** A list of links including District Scorecard, Bullying report information, CPS-TV, Gallery, Families Portal, Online donations, ParentLink/Blackboard messaging, Peachjar eFlyers, Quarterly Connection, School lunch, School year calendar, Staff directory, Staff Webmail, and School Tip Line.
- Hot Topics:** A list of topics including School-based Flu Vaccine, 2018-19 Budget, Guardian Acknowledgments, 2018-19 Bus Route Information, Elementary school supply lists, Enrollment and immigration, Lottery school process and application, AEO: Achievement, Enrichment, and Opportunity, and School locator tool.
- News You Can Use:** A section featuring a photo of a group of people at a groundbreaking ceremony. Below the photo are three news items:
 - New middle school groundbreaking ceremony:** CPS will celebrate the groundbreaking of a new middle school in southwest Columbia. View more +
 - CPS students earn perfect ACT scores:** Six Columbia Public Schools students earned perfect scores on the ACT exam. View more +
 - Hickman student named young entrepreneur of the year:** Hickman High School junior Erin Wilson has been named the 2018 Young Entrepreneur of the Year by the City of Columbia Minority and Women Owned Business Committee. View more +
- Upcoming Events:** A calendar of events for October:
 - OCT 8 5:00 PM:** Board of Education Executive (Closed) Session
 - 6:30 PM:** Board of Education Meeting
 - OCT 15 7:15 AM - 9:00 AM:** Policy Committee Meeting
 - OCT 16:** Classes dismissed 2.5 hours before normal dismissal times for staff planning and collaboration
 - OCT 18 7:30 AM:** Board of Education Work Session
 - OCT 19 8:00 AM:** City/County/Chamber/CPS/MSU Joint Meeting

At the bottom of the page, there are links for "News You Can Use Archive", "CPS Families Portal Login", "Families Portal Help FAQ", "Check Guardian Email Address", and "CPS Students & Faculty Portal Login".



► SCHOOL BOARD DISCUSSION & ACTION



The Board of Education will discuss results and:

- Based on feedback, a recommendation will be presented to the Board at a subsequent meeting
- Take action on a recommendation



A group of five diverse school children are running happily across a grassy field. From left to right: a boy in a grey shirt and blue jeans, a boy in a white polo shirt and blue jeans, a girl in a pink shirt and blue shorts, a boy in a blue shirt and blue jeans, and a girl in a pink long-sleeved shirt and blue jeans. All children are wearing backpacks. In the background, there is a yellow school building with several windows. The text "BACKGROUND DATA" is overlaid in the center in a white, serif font.

BACKGROUND DATA



▶ HISTORICAL ENROLLMENT

Historical Enrollment - District-wide

Grade	2010-11	2011-12	2012-13	2013-14	2014-15	2015-16	2016-17	2017-18	2018-19	2019-20
K	1,343	1,357	1,428	1,440	1,405	1,306	1,332	1,418	1,435	1,461
1	1,387	1,343	1,352	1,418	1,461	1,383	1,337	1,380	1,466	1,472
2	1,297	1,368	1,353	1,366	1,434	1,450	1,387	1,332	1,386	1,471
3	1,268	1,318	1,371	1,385	1,345	1,426	1,461	1,401	1,361	1,416
4	1,321	1,280	1,306	1,383	1,389	1,341	1,406	1,479	1,423	1,367
5	1,347	1,307	1,261	1,300	1,369	1,408	1,367	1,410	1,497	1,413
6	1,208	1,335	1,269	1,252	1,267	1,346	1,344	1,362	1,447	1,475
7	1,251	1,224	1,315	1,274	1,253	1,253	1,362	1,352	1,395	1,453
8	1,249	1,251	1,229	1,309	1,271	1,277	1,281	1,370	1,376	1,420
9	1,265	1,285	1,276	1,290	1,332	1,274	1,306	1,364	1,452	1,477
10	1,284	1,318	1,316	1,279	1,252	1,321	1,309	1,315	1,383	1,466
11	1,329	1,234	1,234	1,259	1,287	1,219	1,342	1,272	1,346	1,365
12	1,279	1,267	1,204	1,206	1,218	1,225	1,182	1,297	1,256	1,255
Grand Total	16,828	16,887	16,914	17,161	17,283	17,229	17,416	17,752	18,223	18,511

Source: Columbia Public Schools Student Data



▶ PROJECTED ENROLLMENT

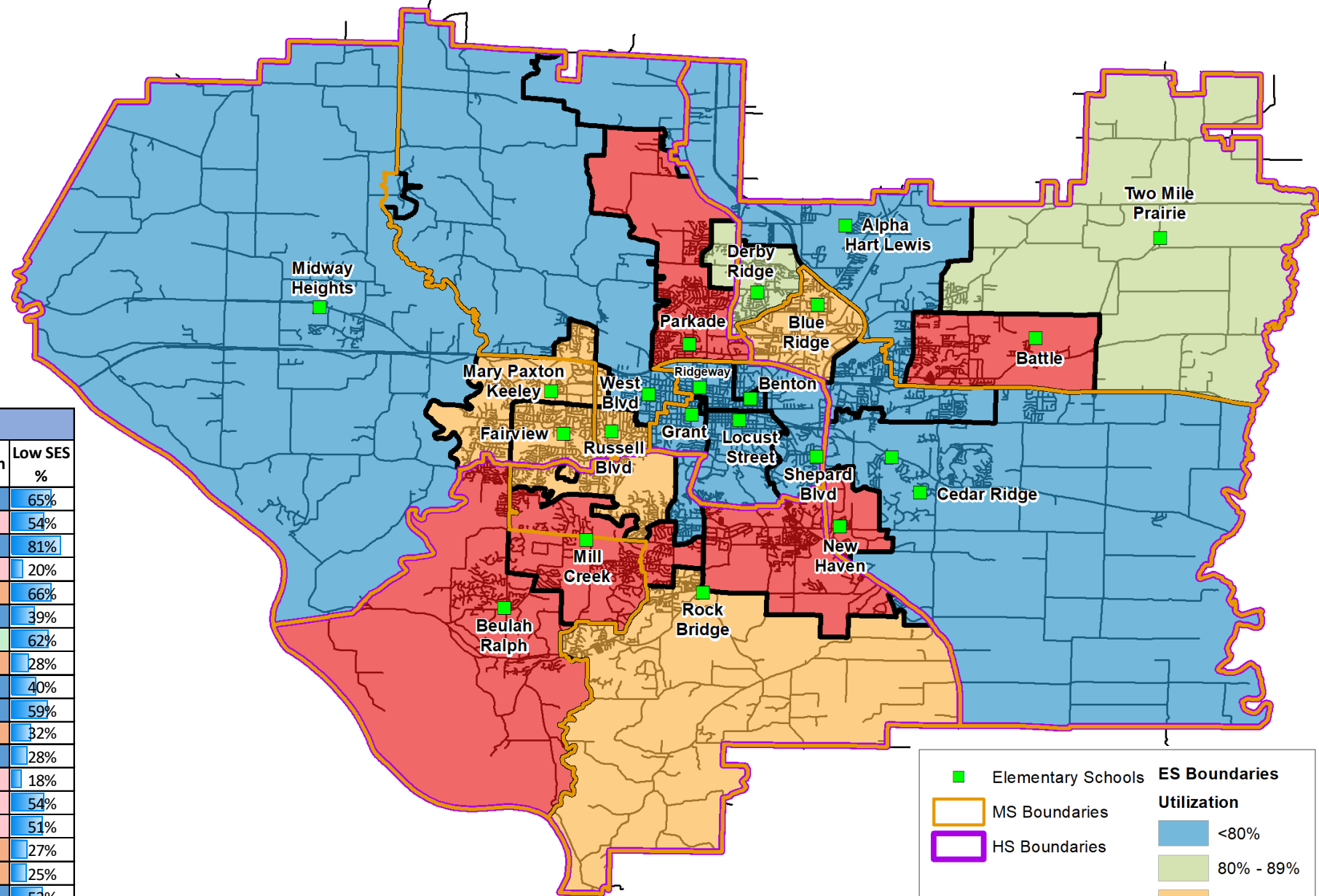
Projected Enrollment - Recommended - District-wide

Grade	2020-21	2021-22	2022-23	2023-24	2024-25	2025-26	2026-27	2027-28	2028-29	2029-30
K	1,443	1,427	1,436	1,431	1,431	1,431	1,431	1,431	1,431	1,431
1	1,502	1,487	1,470	1,475	1,474	1,474	1,474	1,474	1,474	1,474
2	1,473	1,508	1,485	1,480	1,480	1,481	1,481	1,481	1,481	1,481
3	1,488	1,488	1,534	1,507	1,498	1,500	1,504	1,504	1,504	1,504
4	1,428	1,505	1,508	1,551	1,523	1,514	1,523	1,520	1,520	1,520
5	1,364	1,428	1,503	1,517	1,549	1,527	1,519	1,524	1,520	1,520
6	1,426	1,376	1,439	1,519	1,528	1,561	1,538	1,530	1,534	1,535
7	1,489	1,439	1,389	1,450	1,534	1,547	1,585	1,563	1,551	1,561
8	1,467	1,503	1,451	1,398	1,470	1,553	1,569	1,602	1,575	1,572
9	1,489	1,548	1,590	1,533	1,477	1,553	1,640	1,657	1,692	1,663
10	1,476	1,508	1,564	1,604	1,554	1,491	1,572	1,663	1,678	1,710
11	1,455	1,468	1,498	1,553	1,589	1,541	1,478	1,563	1,649	1,666
12	1,324	1,400	1,420	1,441	1,494	1,531	1,479	1,419	1,504	1,594
Grand Total	18,824	19,085	19,287	19,459	19,601	19,704	19,793	19,931	20,113	20,231

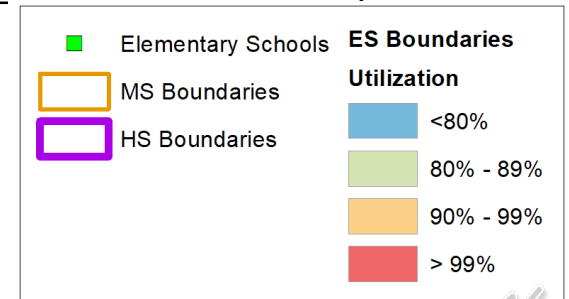
Source: Cooperative Strategies



► 2019-20 STATE OF THE SCHOOLS

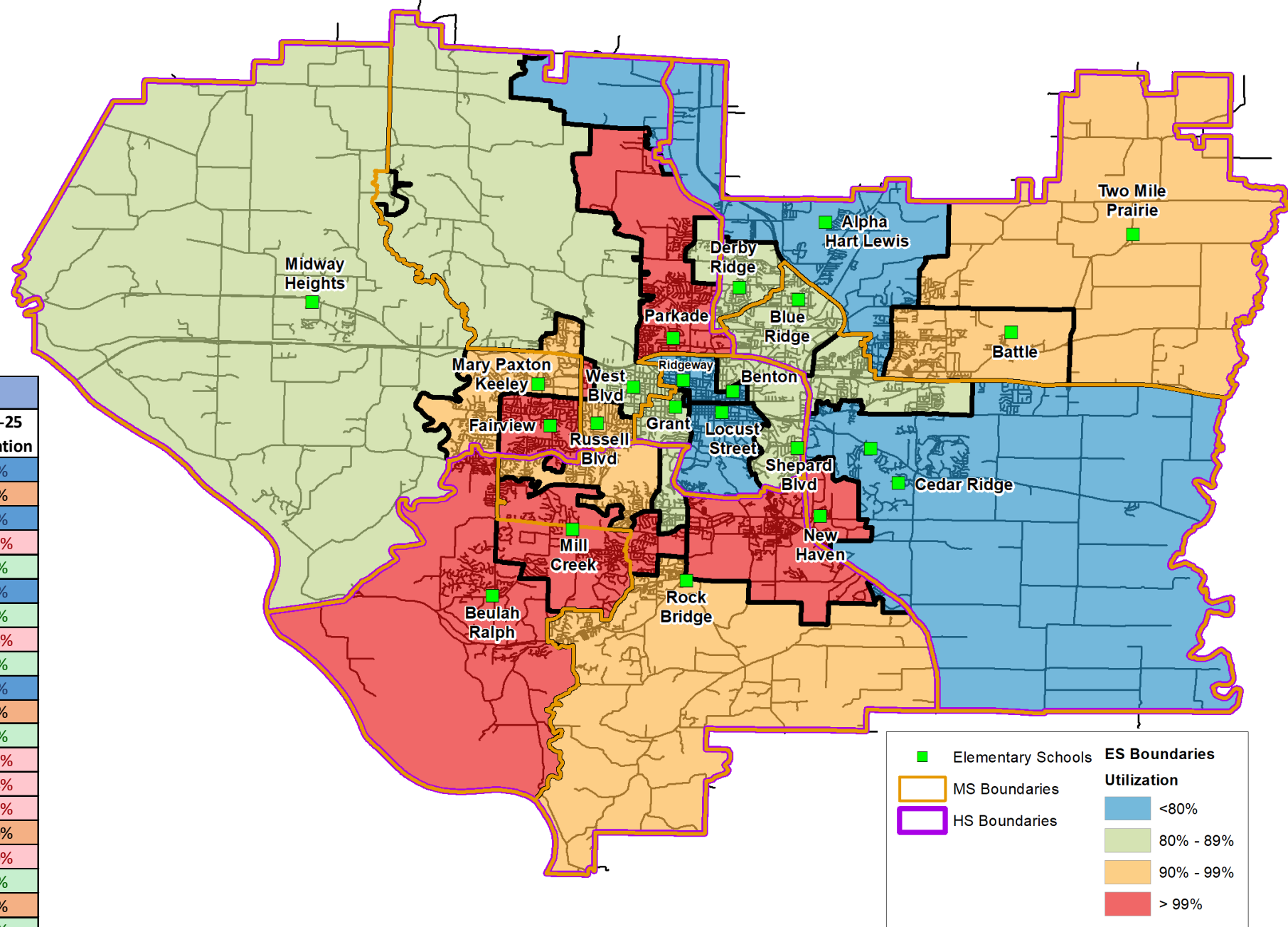


CURRENT BOUNDARIES				
School	Capacity (No Trailers)	Live-In Enrollment	Utilization	Low SES %
Alpha Hart Lewis ES	650	446	69%	65%
Battle ES	450	486	108%	54%
Benton ES	260	134	52%	81%
Beulah Ralph ES	650	696	107%	20%
Blue Ridge ES	500	462	92%	66%
Cedar Ridge ES	650	447	69%	39%
Derby Ridge ES	556	479	86%	62%
Fairview ES	550	506	92%	28%
Grant ES	375	285	76%	40%
Locust Street Expressive Arts ES	250	97	39%	59%
Mary Paxton Keeley ES	723	683	94%	32%
Midway Heights ES	295	231	78%	28%
Mill Creek ES	673	714	106%	18%
New Haven ES	293	296	101%	54%
Parkade ES	478	620	130%	51%
Rock Bridge ES	502	487	97%	27%
Russell Boulevard ES	482	451	94%	25%
Shepard Boulevard ES	652	519	80%	52%
Two Mile Prairie ES	195	167	86%	34%
West Boulevard ES	438	339	77%	60%
TOTAL	9,622	8,545	89%	42%



► 2024-25 STATE OF THE SCHOOLS

CURRENT BOUNDARIES			
School	Capacity (No Trailers)	2024-25 Projection	2024-25 Utilization
Alpha Hart Lewis ES	650	435	67%
Battle ES	450	437	97%
Benton ES	260	130	50%
Beulah Ralph ES	650	786	121%
Blue Ridge ES	500	432	86%
Cedar Ridge ES	650	456	70%
Derby Ridge ES	556	472	85%
Fairview ES	550	582	106%
Grant ES	375	306	82%
Locust Street Expressive Arts ES	250	112	45%
Mary Paxton Keeley ES	723	701	97%
Midway Heights ES	295	257	87%
Mill Creek ES	673	704	105%
New Haven ES	293	305	104%
Parkade ES	478	678	142%
Rock Bridge ES	502	501	100%
Russell Boulevard ES	482	484	100%
Shepard Boulevard ES	652	586	90%
Two Mile Prairie ES	195	185	95%
West Boulevard ES	438	362	83%
TOTAL	9,622	8,911	93%



■ Elementary Schools

MS Boundaries

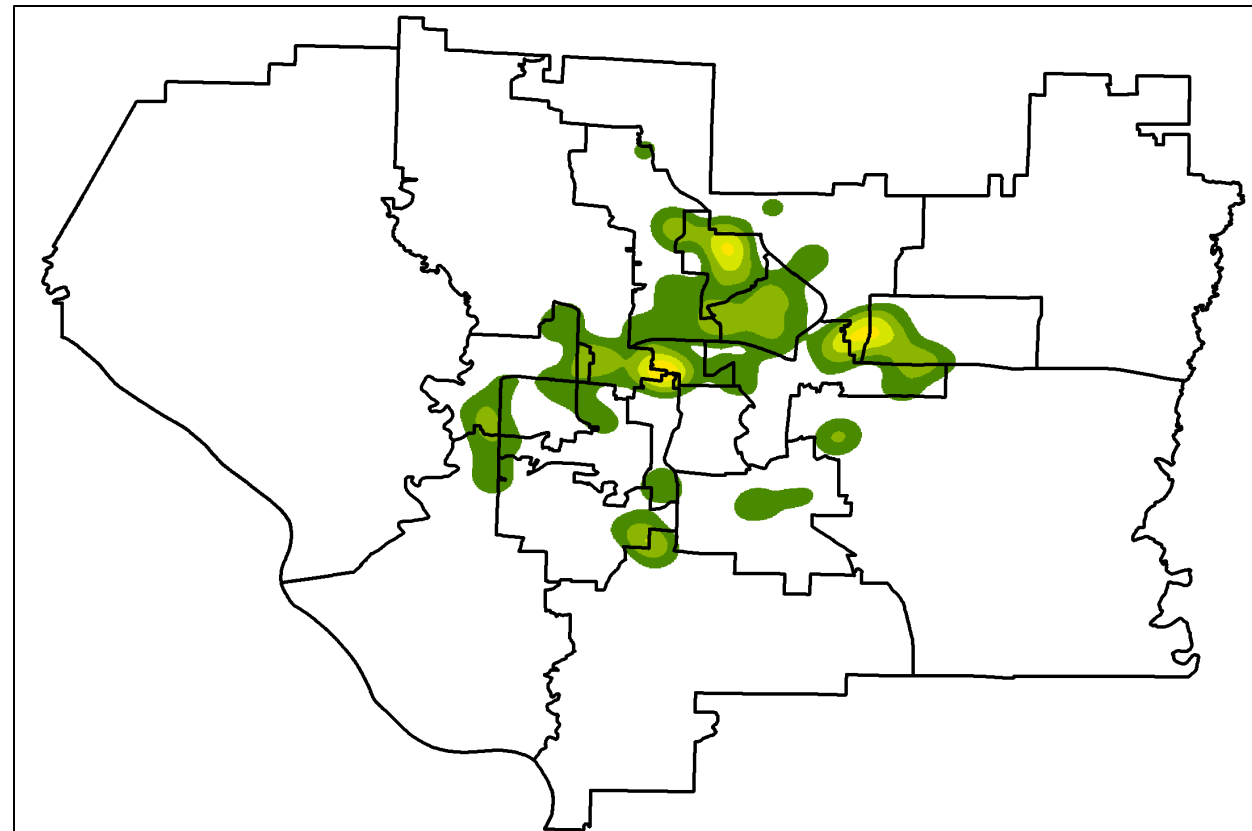
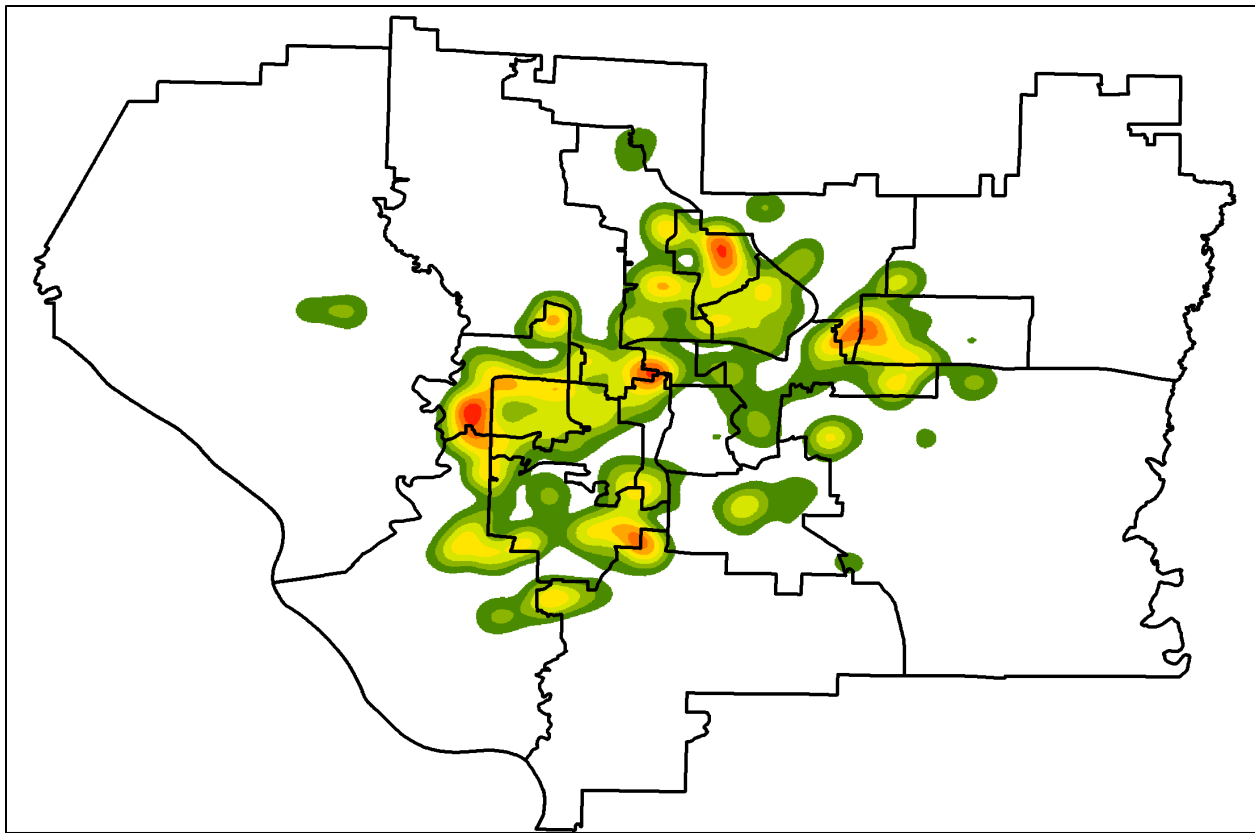
HS Boundaries

ES Boundaries Utilization

- <80%
- 80% - 89%
- 90% - 99%
- > 99%

▶ STUDENT DENSITY

ALL STUDENTS



SOCIOECONOMICALLY DISADVANTAGED STUDENTS



A group of five diverse school children are running happily across a grassy field. From left to right: a boy in a grey shirt and blue jeans, a boy in a white polo shirt and blue jeans, a girl in a pink shirt and blue shorts, a boy in a blue shirt and blue jeans, and a girl in a pink shirt and blue jeans. All children are wearing backpacks. In the background, there is a yellow school building with white window frames and some trees. The word "SCENARIOS" is written in white, serif, all-caps font across the center of the image.

SCENARIOS



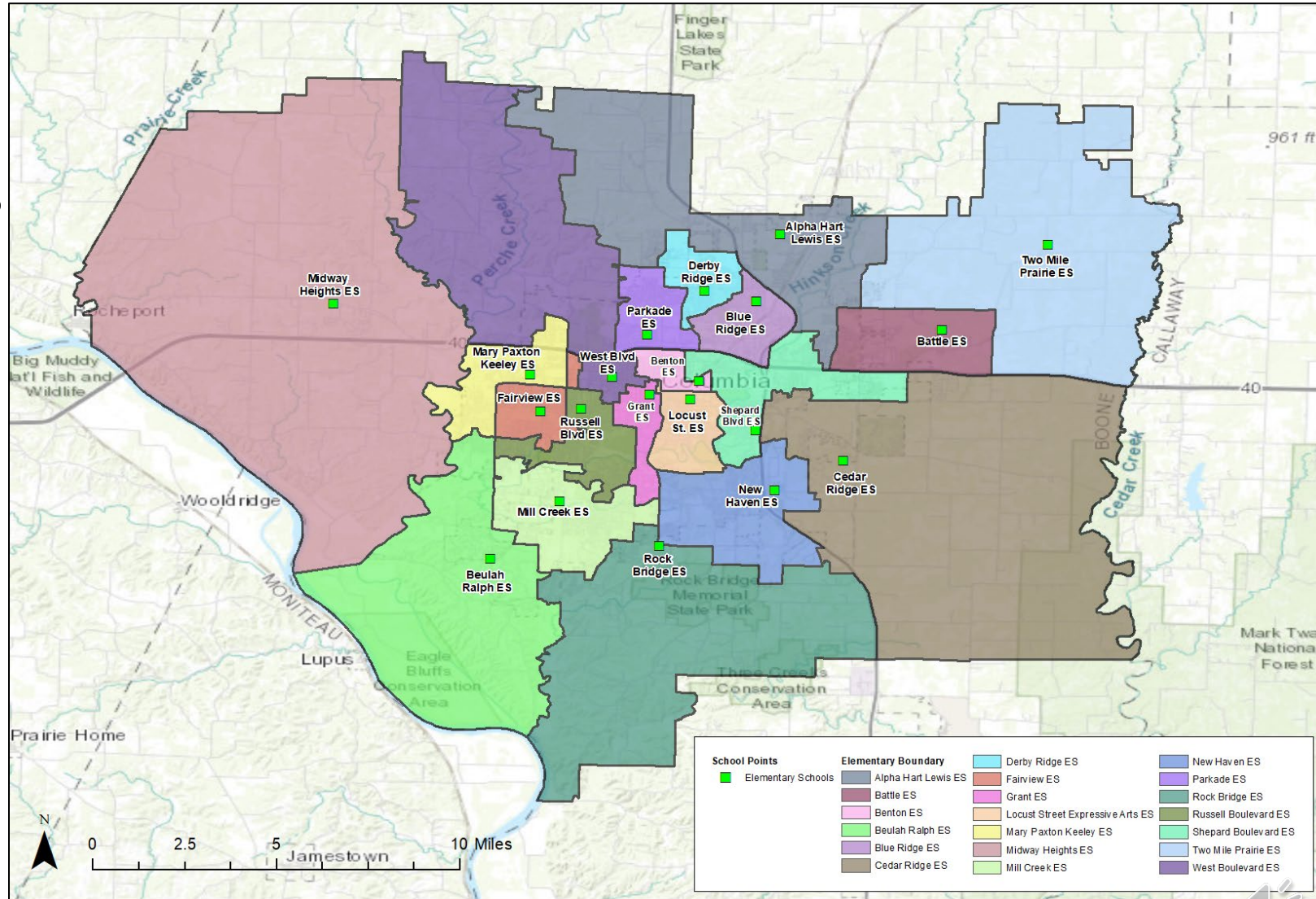
► PHASE 1

RELIEF TO PARKADE

Parkade Elementary

- Currently at 130% capacity
- Slated to be 142% by 2024
- **Phase 1 to take effect in Fall of 2021**
- Impacts Parkade ES & Alpha Hart Lewis ES

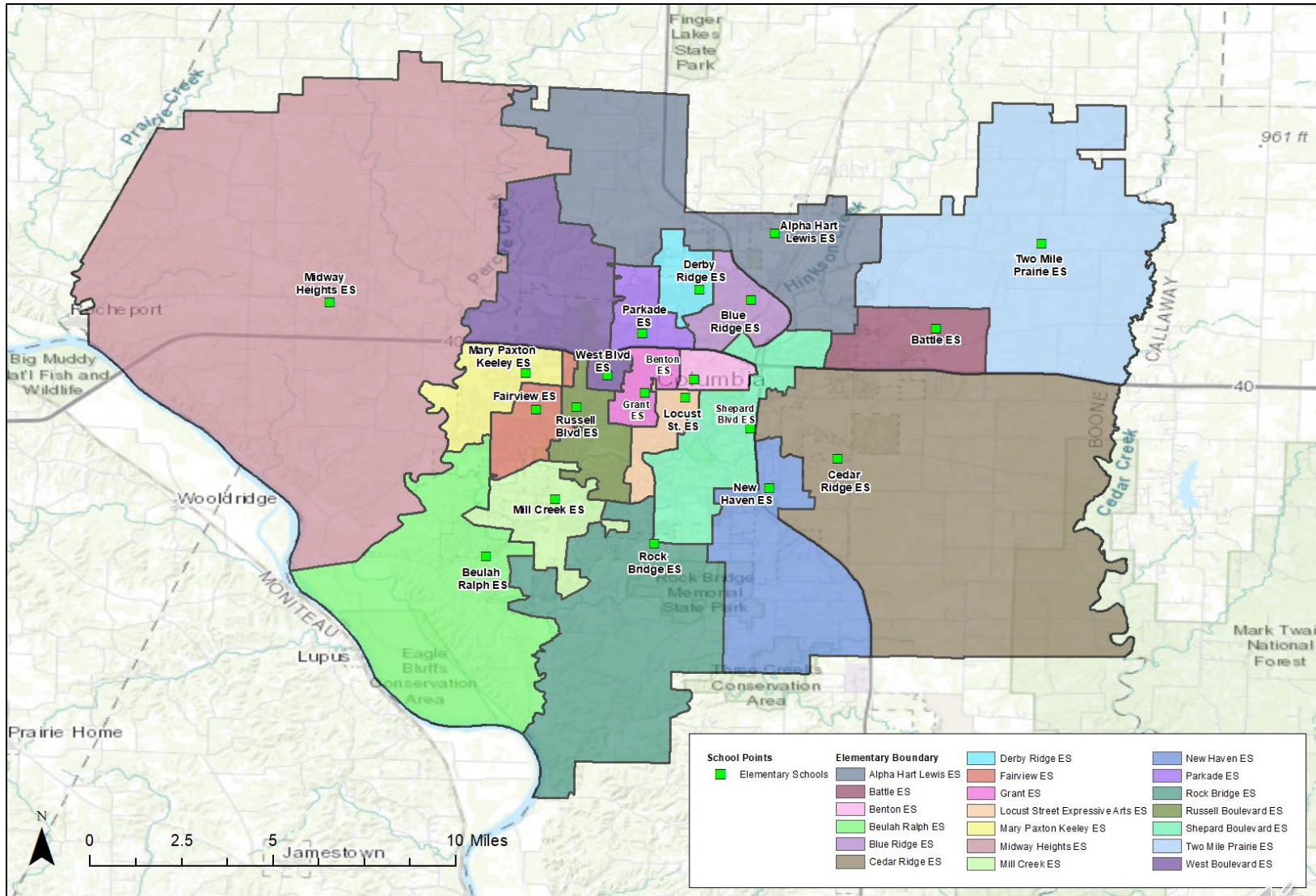
PHASE I				
School	Capacity (No Trailers)	Live-In Enrollment	Utilization	Low SES %
Alpha Hart Lewis ES	650	626	96%	64%
Battle ES	450	486	108%	54%
Benton ES	260	134	52%	81%
Beulah Ralph ES	650	696	107%	20%
Blue Ridge ES	500	462	92%	66%
Cedar Ridge ES	650	447	69%	39%
Derby Ridge ES	556	479	86%	62%
Fairview ES	550	506	92%	28%
Grant ES	375	285	76%	40%
Locust Street Expressive Arts ES	250	97	39%	59%
Mary Paxton Keeley ES	723	683	94%	32%
Midway Heights ES	295	231	78%	28%
Mill Creek ES	673	714	106%	18%
New Haven ES	293	296	101%	54%
Parkade ES	478	440	92%	46%
Rock Bridge ES	650	487	75%	27%
Russell Boulevard ES	482	451	94%	25%
Shepard Boulevard ES	652	519	80%	52%
Two Mile Prairie ES	195	167	86%	34%
West Boulevard ES	438	339	77%	60%
TOTAL	9,770	8,545	89%	42%



► SCENARIO A

PHASE II

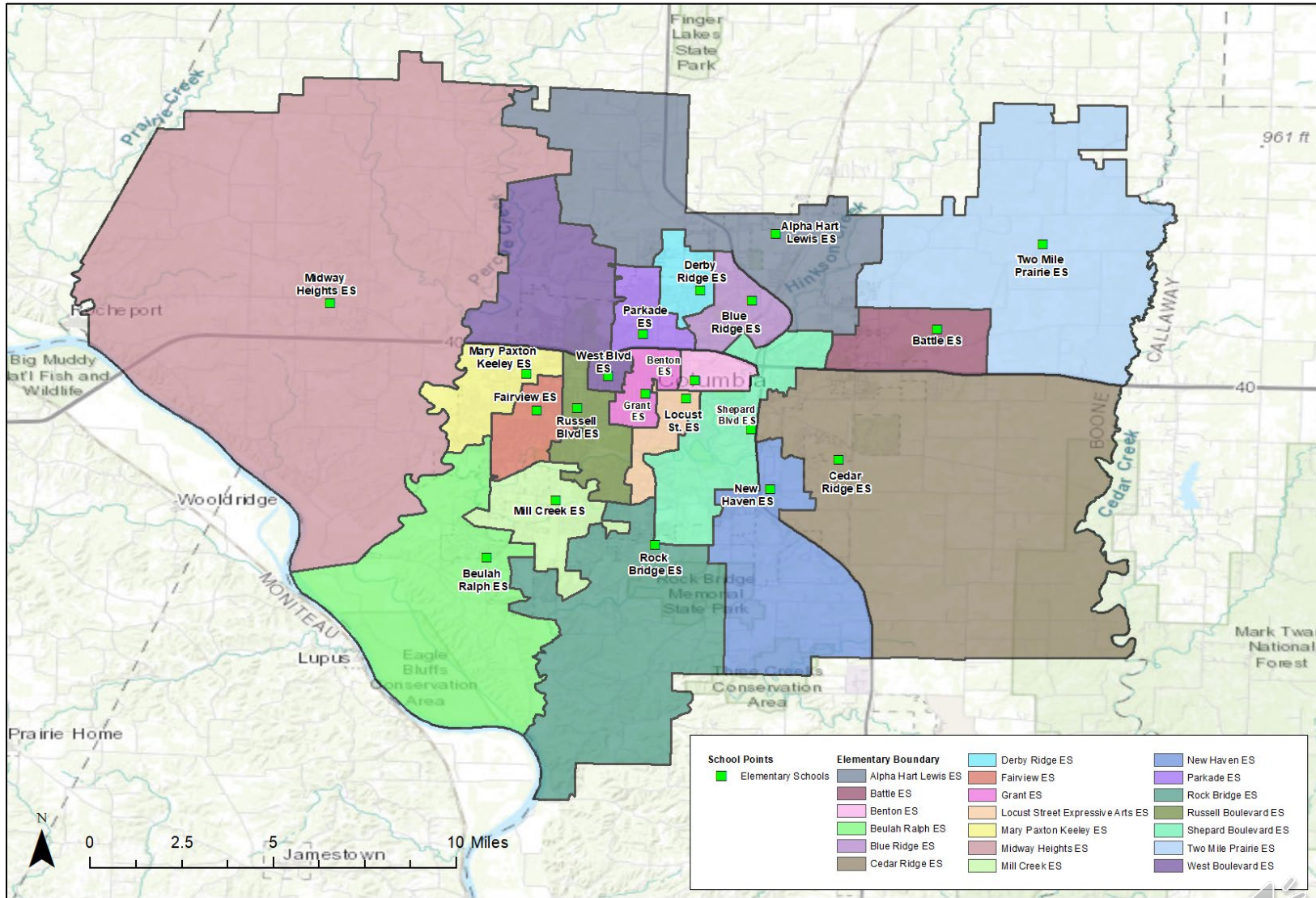
SCENARIO A PHASE II				
School	Capacity (No Trailers)	Live-In Enrollment	Utilization	Low SES %
Alpha Hart Lewis ES	650	553	85%	59%
Battle ES	450	427	95%	55%
Benton ES	260	111	43%	72%
Beulah Ralph ES	650	536	82%	23%
Blue Ridge ES	500	432	86%	60%
Cedar Ridge ES	650	610	94%	40%
Derby Ridge ES	556	483	87%	62%
Fairview ES	550	526	96%	29%
Grant ES	375	352	94%	59%
Locust Street Expressive Arts ES	250	129	52%	55%
Mary Paxton Keeley ES	723	693	96%	26%
Midway Heights ES	295	255	86%	28%
Mill Creek ES	673	603	90%	21%
New Haven ES	293	267	91%	52%
Parkade ES	478	393	82%	49%
Rock Bridge ES	650	538	83%	21%
Russell Boulevard ES	482	477	99%	30%
Shepard Boulevard ES	652	613	94%	60%
Two Mile Prairie ES	195	167	86%	34%
West Boulevard ES	438	380	87%	46%
TOTAL	9,770	8,545	89%	42%



► SCENARIO A

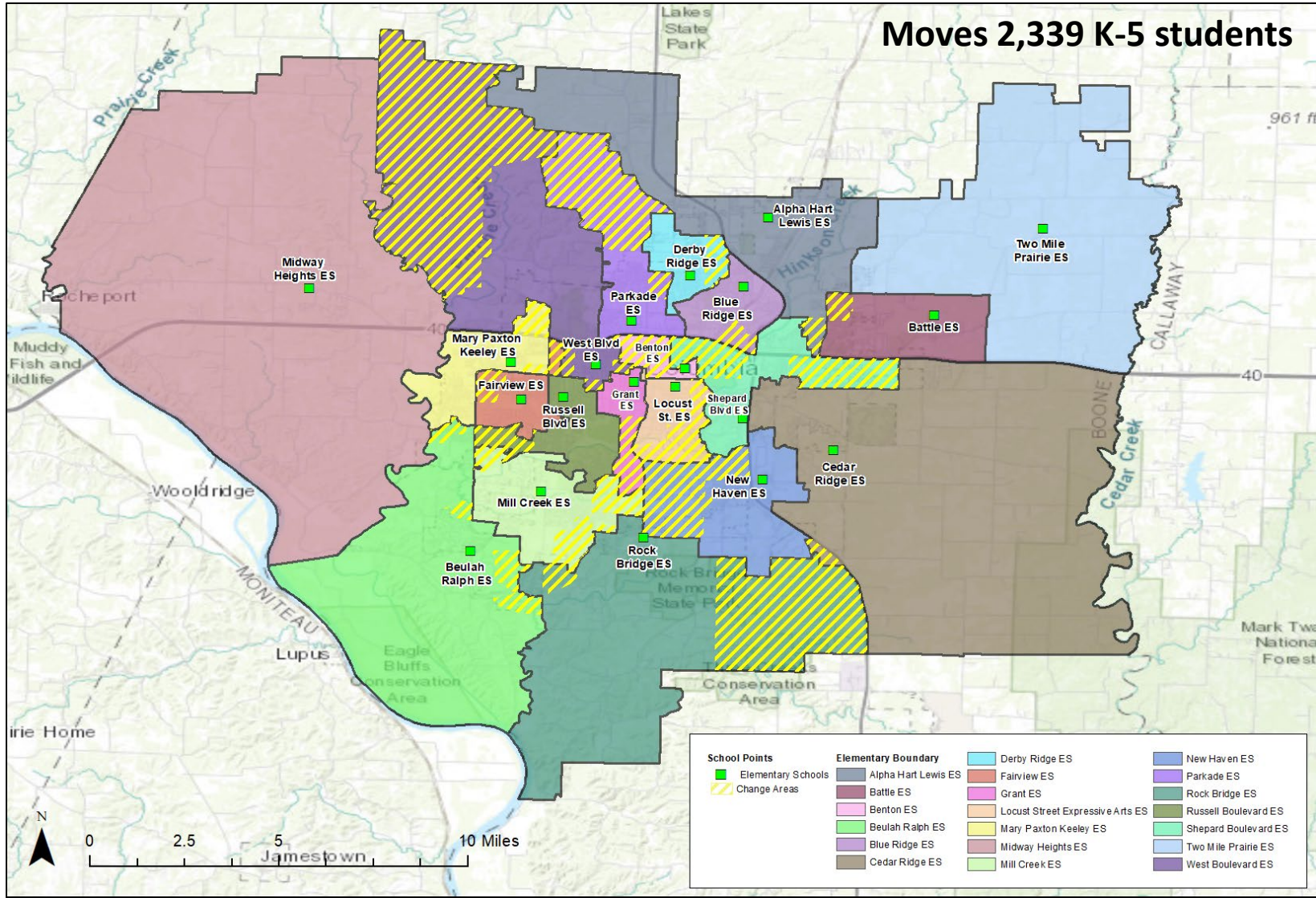
PHASE III

SCENARIO A PHASE III				
School	Capacity (No Trailers)	Live-In Enrollment	Utilization	Low SES %
Alpha Hart Lewis ES	650	553	85%	59%
Battle ES	450	427	95%	55%
Benton ES	260	111	43%	72%
Beulah Ralph ES	650	536	82%	23%
Blue Ridge ES	500	432	86%	60%
Cedar Ridge ES	650	610	94%	40%
Derby Ridge ES	556	483	87%	62%
Fairview ES	550	495	90%	25%
Grant ES	375	352	94%	59%
Locust Street Expressive Arts ES	250	129	52%	55%
Mary Paxton Keeley ES	723	655	91%	23%
Midway Heights ES	295	255	86%	28%
Mill Creek ES	673	603	90%	21%
New Haven ES	293	267	91%	52%
Parkade ES	478	393	82%	49%
Rock Bridge ES	650	538	83%	21%
Russell Boulevard ES	650	546	84%	36%
Shepard Boulevard ES	652	613	94%	60%
Two Mile Prairie ES	195	167	86%	34%
West Boulevard ES	438	380	87%	45%
TOTAL	9,938	8,545	86%	42%



► SCENARIO A

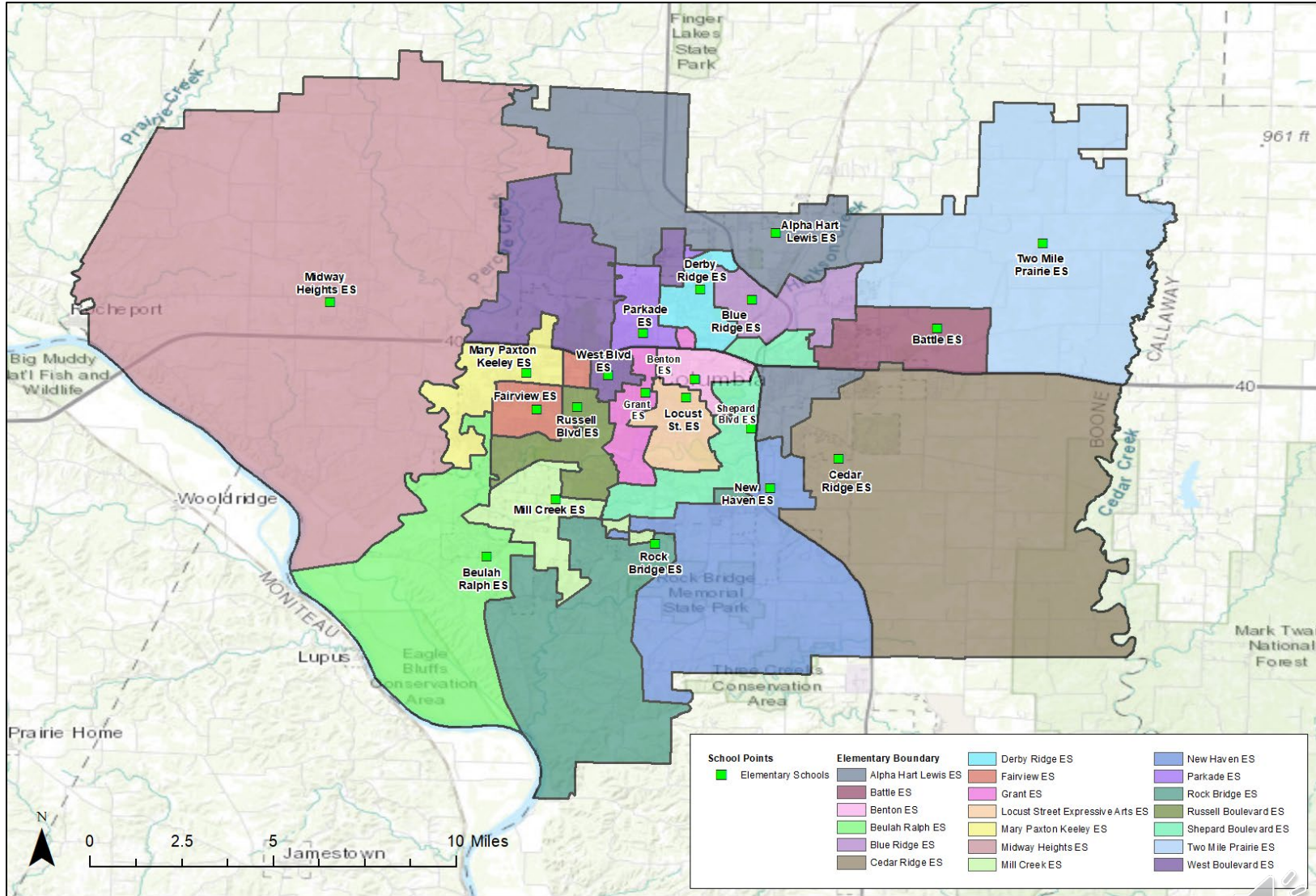
CHANGE AREAS



► SCENARIO B

PHASE II

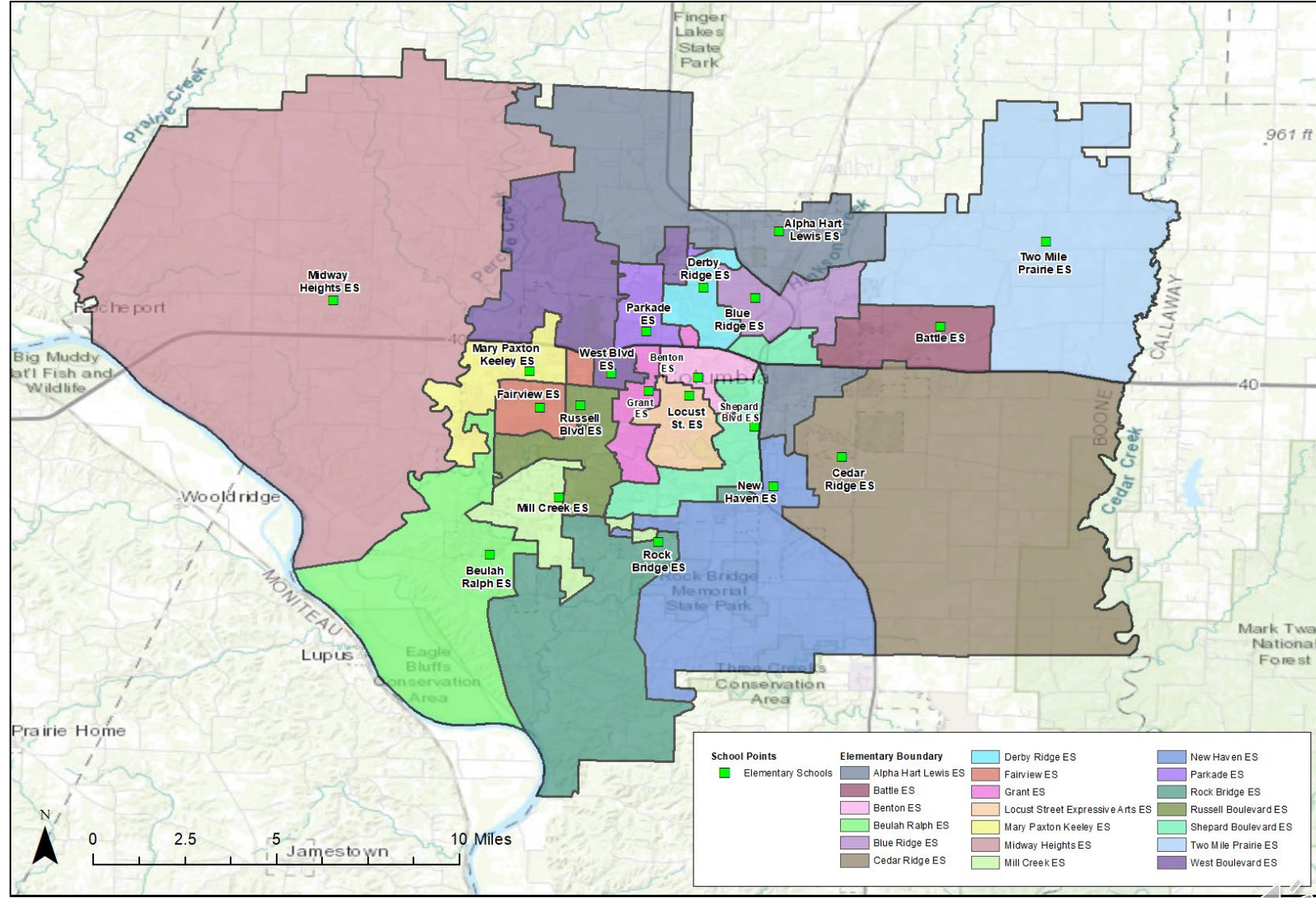
SCENARIO B PHASE II				
School	Capacity (No Trailers)	Live-In Enrollment	Utilization	Low SES %
Alpha Hart Lewis ES	650	573	88%	59%
Battle ES	450	421	94%	55%
Benton ES	260	134	52%	67%
Beulah Ralph ES	650	584	90%	30%
Blue Ridge ES	500	444	89%	54%
Cedar Ridge ES	650	598	92%	44%
Derby Ridge ES	556	503	90%	59%
Fairview ES	550	513	93%	33%
Grant ES	375	355	95%	54%
Locust Street Expressive Arts ES	250	111	44%	59%
Mary Paxton Keeley ES	723	643	89%	25%
Midway Heights ES	295	255	86%	28%
Mill Creek ES	673	600	89%	28%
New Haven ES	293	265	90%	43%
Parkade ES	478	411	86%	51%
Rock Bridge ES	650	587	90%	18%
Russell Boulevard ES	482	485	101%	24%
Shepard Boulevard ES	652	503	77%	49%
Two Mile Prairie ES	195	167	86%	34%
West Boulevard ES	438	393	90%	61%
TOTAL	9,770	8,545	89%	42%



► SCENARIO B

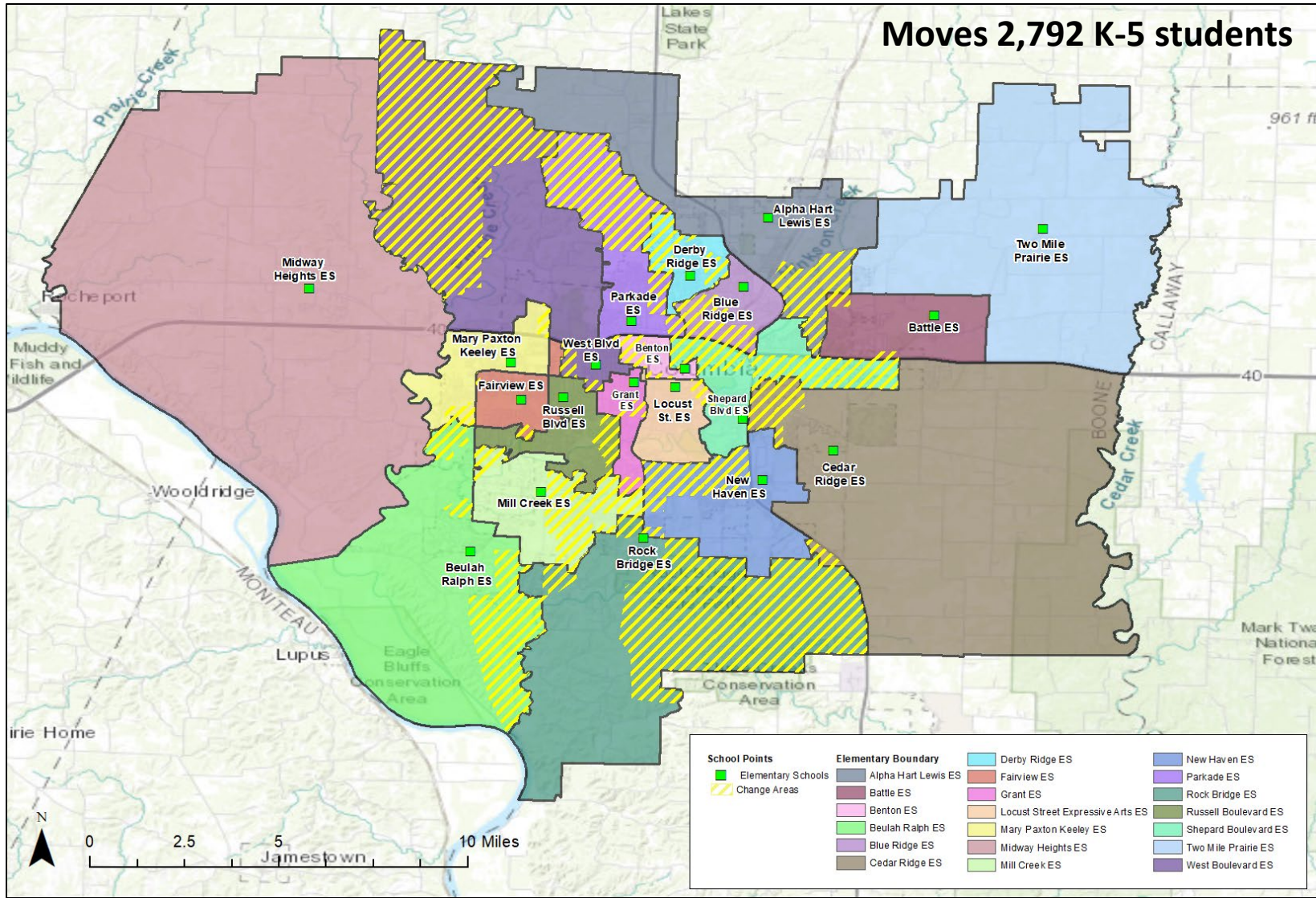
PHASE III

SCENARIO B PHASE III				
School	Capacity (No Trailers)	Live-In Enrollment	Utilization	Low SES %
Alpha Hart Lewis ES	650	573	88%	59%
Battle ES	450	421	94%	55%
Benton ES	260	134	52%	67%
Beulah Ralph ES	650	584	90%	30%
Blue Ridge ES	500	444	89%	54%
Cedar Ridge ES	650	598	92%	44%
Derby Ridge ES	556	503	90%	59%
Fairview ES	550	513	93%	33%
Grant ES	375	355	95%	54%
Locust Street Expressive Arts ES	250	111	44%	59%
Mary Paxton Keeley ES	723	643	89%	25%
Midway Heights ES	295	255	86%	28%
Mill Creek ES	673	560	83%	30%
New Haven ES	293	265	90%	43%
Parkade ES	478	411	86%	51%
Rock Bridge ES	650	587	90%	18%
Russell Boulevard ES	650	534	82%	23%
Shepard Boulevard ES	652	503	77%	49%
Two Mile Prairie ES	195	167	86%	34%
West Boulevard ES	438	384	88%	61%
TOTAL	9,938	8,545	86%	42%



► SCENARIO B

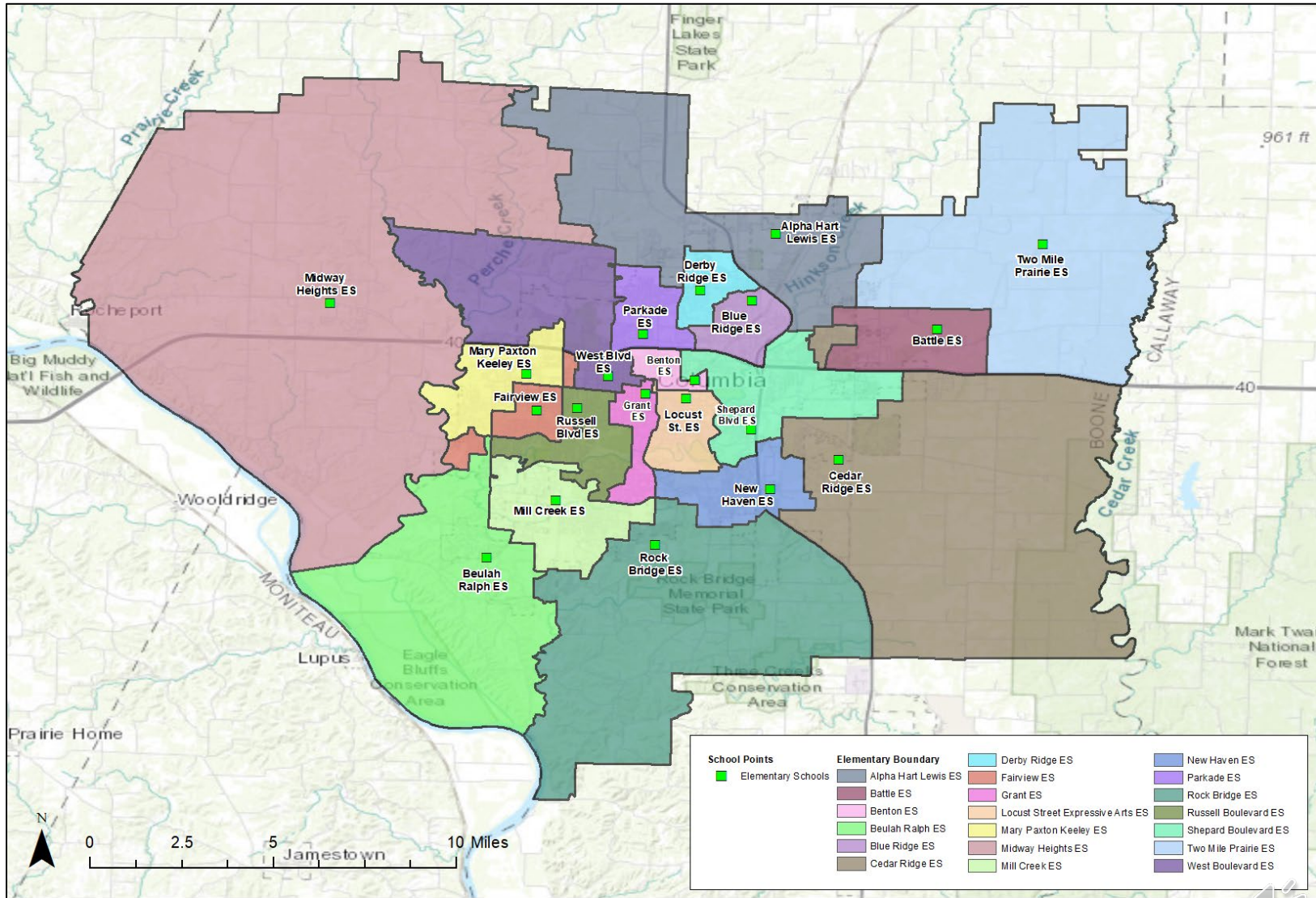
CHANGE AREAS



► SCENARIO C

PHASE II

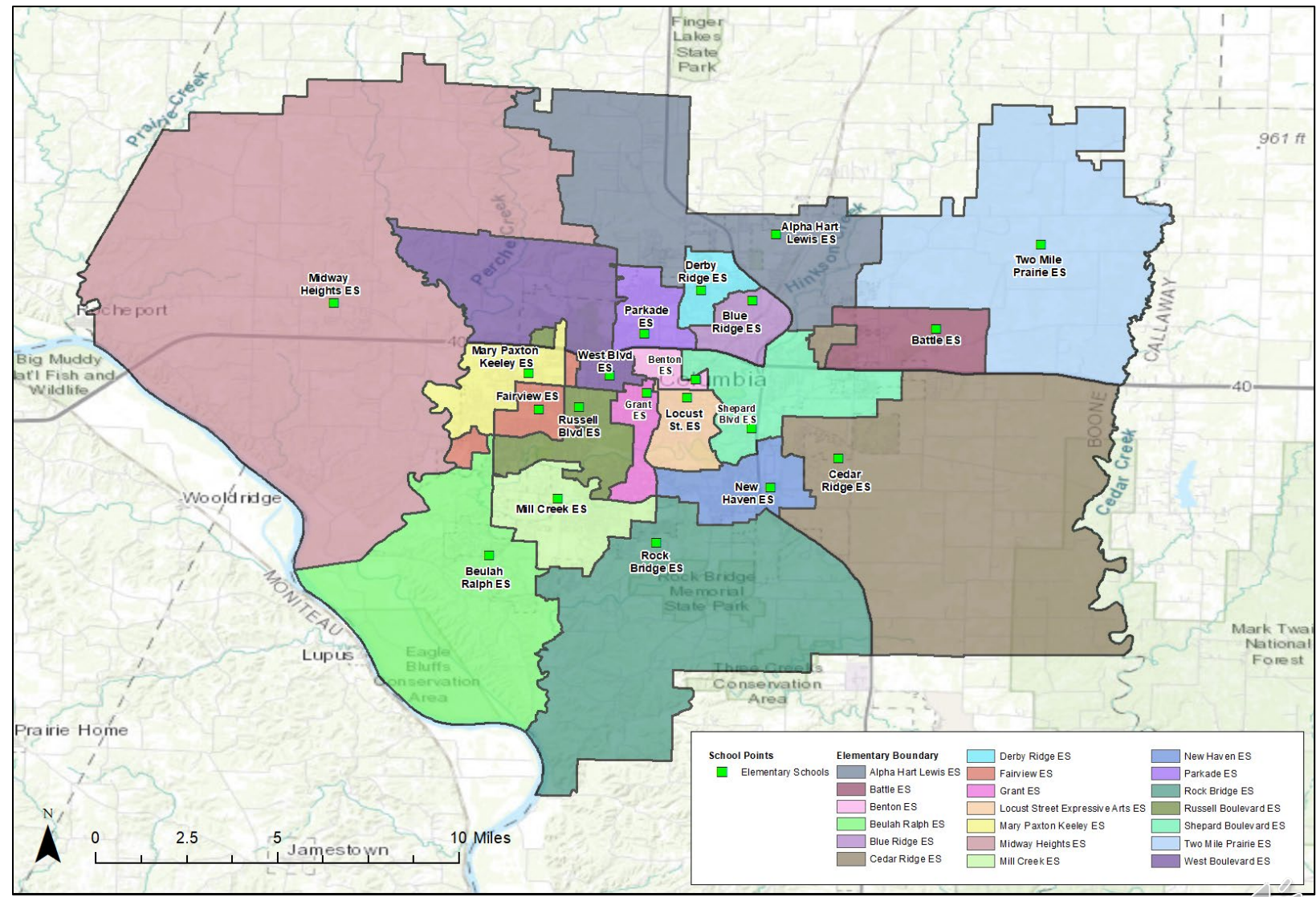
SCENARIO C PHASE II				
School	Capacity (No Trailers)	Live-In Enrollment	Utilization	Low SES %
Alpha Hart Lewis ES	650	556	86%	61%
Battle ES	450	387	86%	51%
Benton ES	260	134	52%	81%
Beulah Ralph ES	650	582	90%	19%
Blue Ridge ES	500	414	83%	68%
Cedar Ridge ES	650	613	94%	50%
Derby Ridge ES	556	460	83%	60%
Fairview ES	550	512	93%	29%
Grant ES	375	336	90%	36%
Locust Street Expressive Arts ES	250	97	39%	59%
Mary Paxton Keeley ES	723	706	98%	31%
Midway Heights ES	295	249	84%	29%
Mill Creek ES	673	663	99%	18%
New Haven ES	293	258	88%	55%
Parkade ES	478	440	92%	46%
Rock Bridge ES	650	554	85%	31%
Russell Boulevard ES	482	474	98%	25%
Shepard Boulevard ES	652	560	86%	52%
Two Mile Prairie ES	195	167	86%	34%
West Boulevard ES	438	383	87%	56%
TOTAL	9,770	8,545	89%	42%



► SCENARIO C

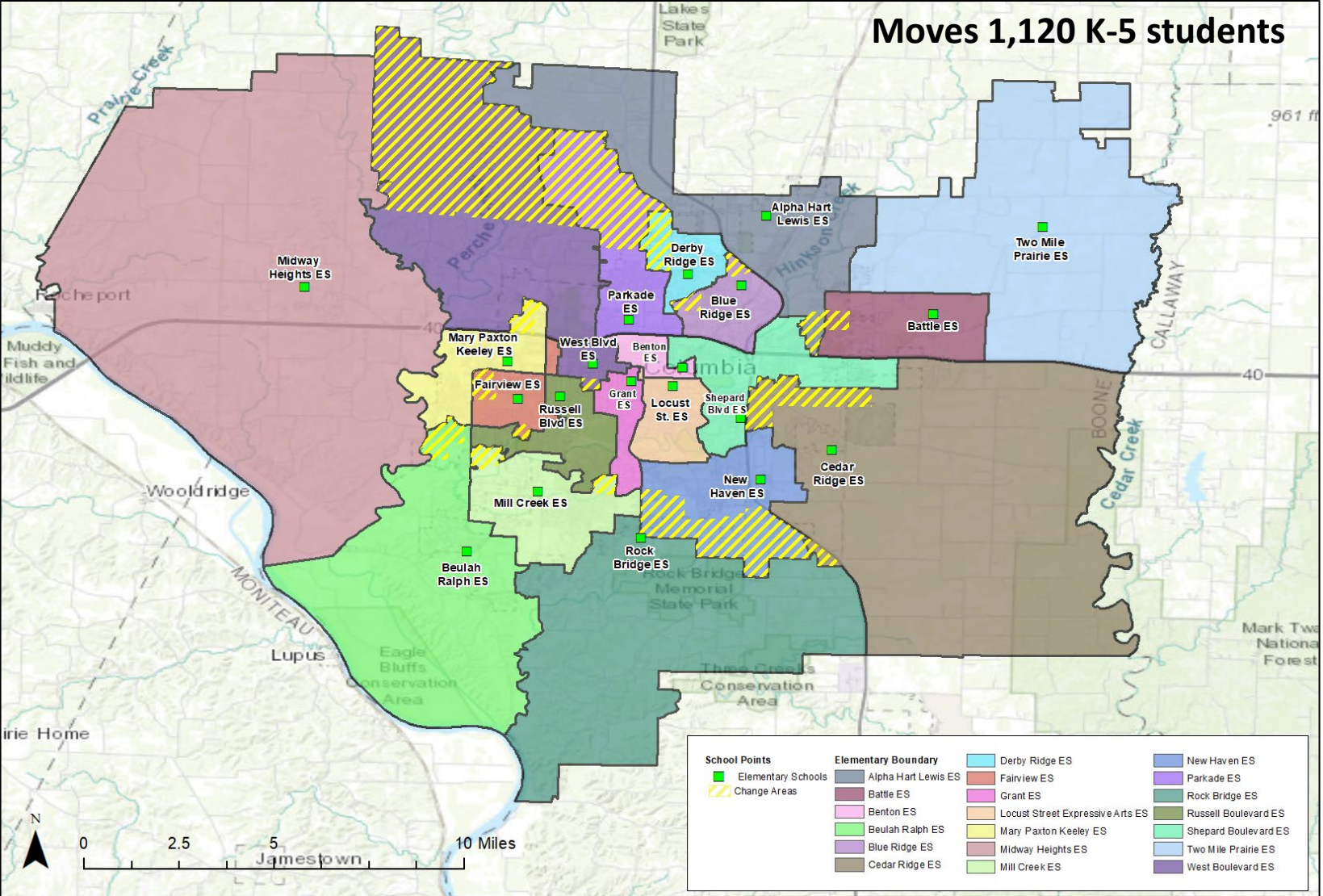
PHASE III

SCENARIO C PHASE III				
School	Capacity (No Trailers)	Live-In Enrollment	Utilization	Low SES %
Alpha Hart Lewis ES	650	556	86%	61%
Battle ES	450	387	86%	51%
Benton ES	260	134	52%	81%
Beulah Ralph ES	650	582	90%	19%
Blue Ridge ES	500	414	83%	68%
Cedar Ridge ES	650	613	94%	50%
Derby Ridge ES	556	460	83%	60%
Fairview ES	550	512	93%	29%
Grant ES	375	336	90%	36%
Locust Street Expressive Arts ES	250	97	39%	59%
Mary Paxton Keeley ES	723	640	89%	31%
Midway Heights ES	295	249	84%	29%
Mill Creek ES	673	619	92%	19%
New Haven ES	293	258	88%	55%
Parkade ES	478	440	92%	46%
Rock Bridge ES	650	554	85%	31%
Russell Boulevard ES	650	584	90%	25%
Shepard Boulevard ES	652	560	86%	52%
Two Mile Prairie ES	195	167	86%	34%
West Boulevard ES	438	383	87%	56%
TOTAL	9,938	8,545	86%	42%



► SCENARIO C

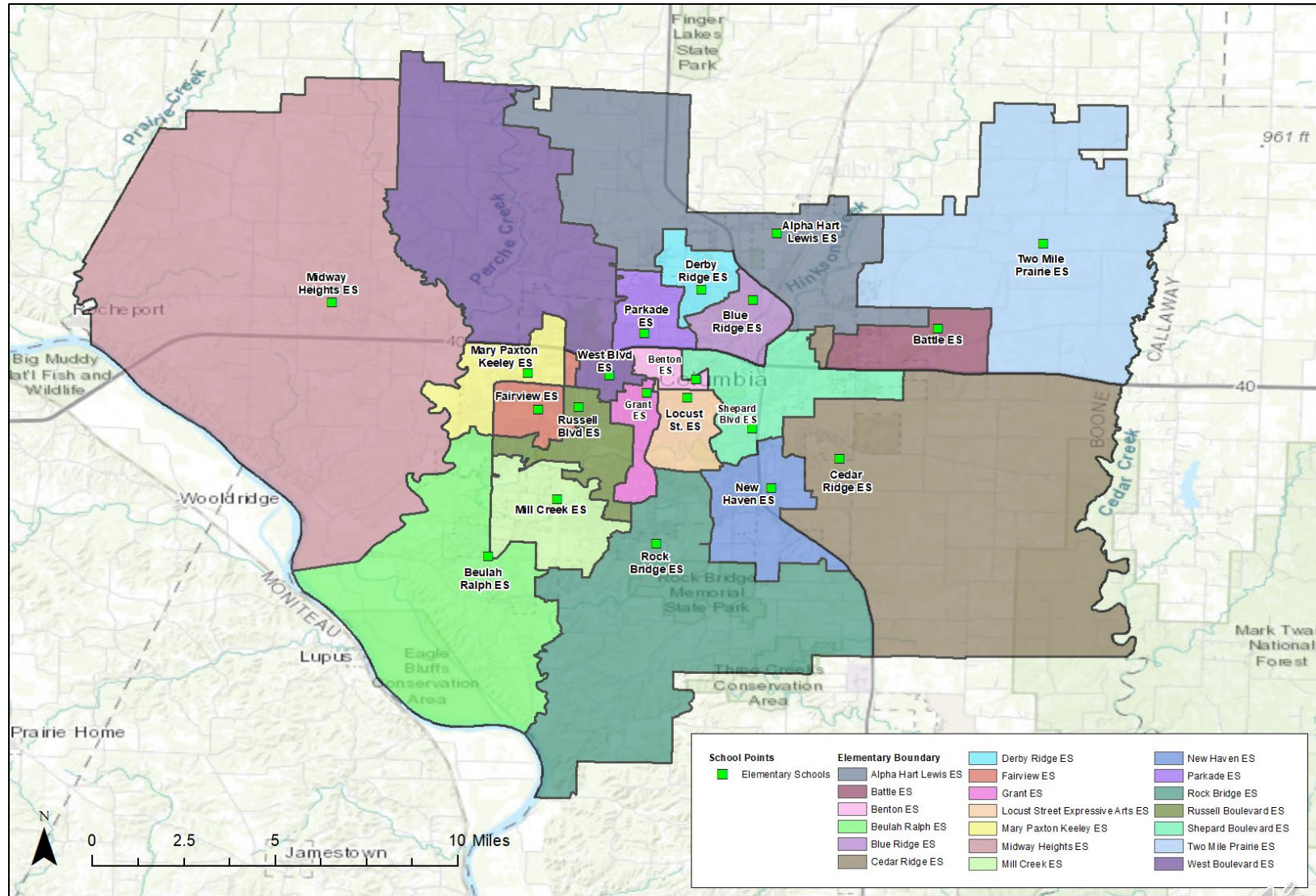
CHANGE AREAS



► SCENARIO D

PHASE II

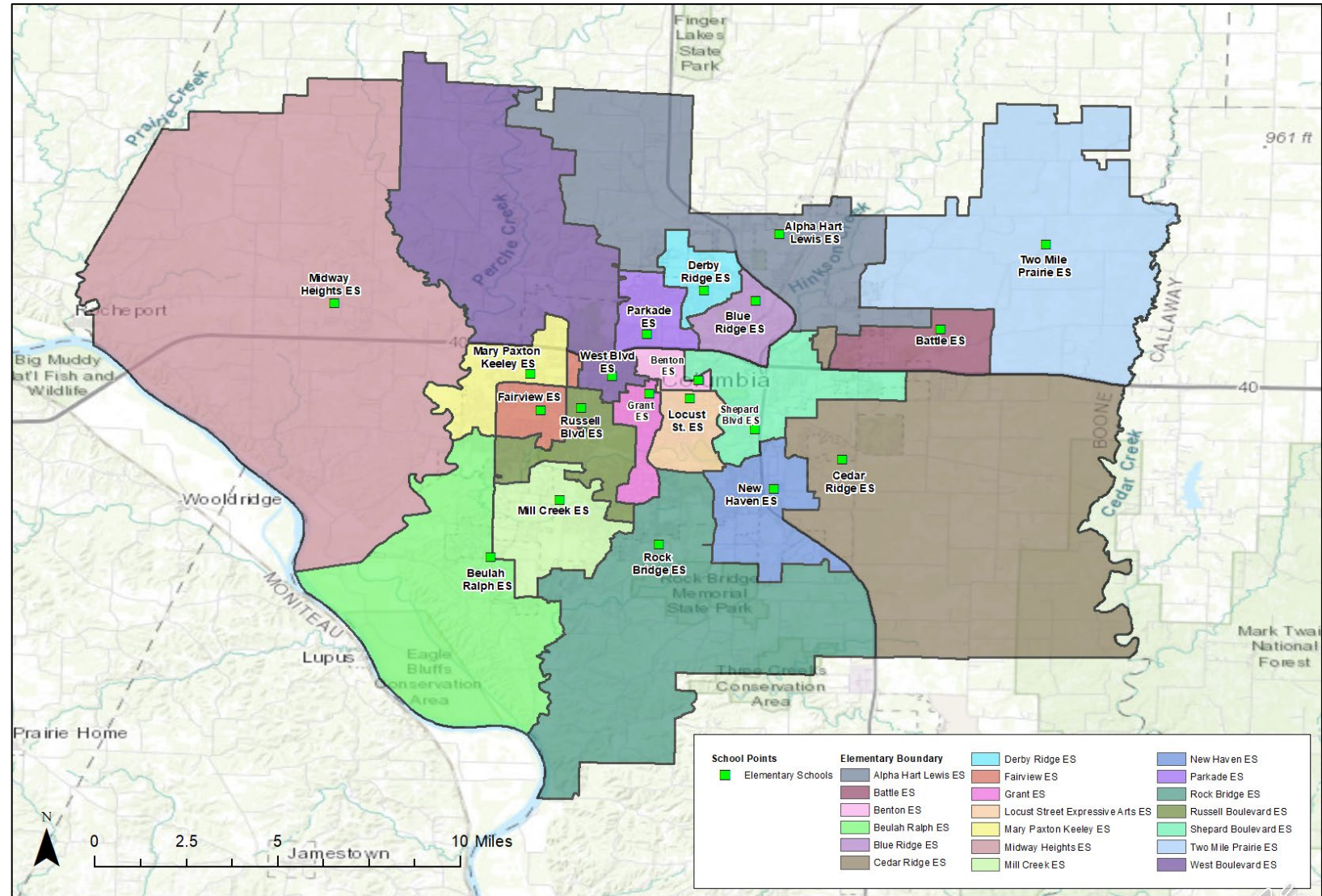
SCENARIO D PHASE II				
School	Capacity (No Trailers)	Live-In Enrollment	Utilization	Low SES %
Alpha Hart Lewis ES	650	558	86%	58%
Battle ES	450	417	93%	56%
Benton ES	260	134	52%	81%
Beulah Ralph ES	650	613	94%	22%
Blue Ridge ES	500	462	92%	66%
Cedar Ridge ES	650	519	80%	46%
Derby Ridge ES	556	479	86%	62%
Fairview ES	550	506	92%	28%
Grant ES	375	333	89%	36%
Locust Street Expressive Arts ES	250	97	39%	59%
Mary Paxton Keeley ES	723	683	94%	32%
Midway Heights ES	295	227	77%	28%
Mill Creek ES	673	684	102%	16%
New Haven ES	293	268	91%	55%
Parkade ES	478	440	92%	46%
Rock Bridge ES	650	567	87%	30%
Russell Boulevard ES	482	493	102%	25%
Shepard Boulevard ES	652	555	85%	52%
Two Mile Prairie ES	195	167	86%	34%
West Boulevard ES	438	343	78%	60%
TOTAL	9,770	8,545	89%	42%



► SCENARIO D

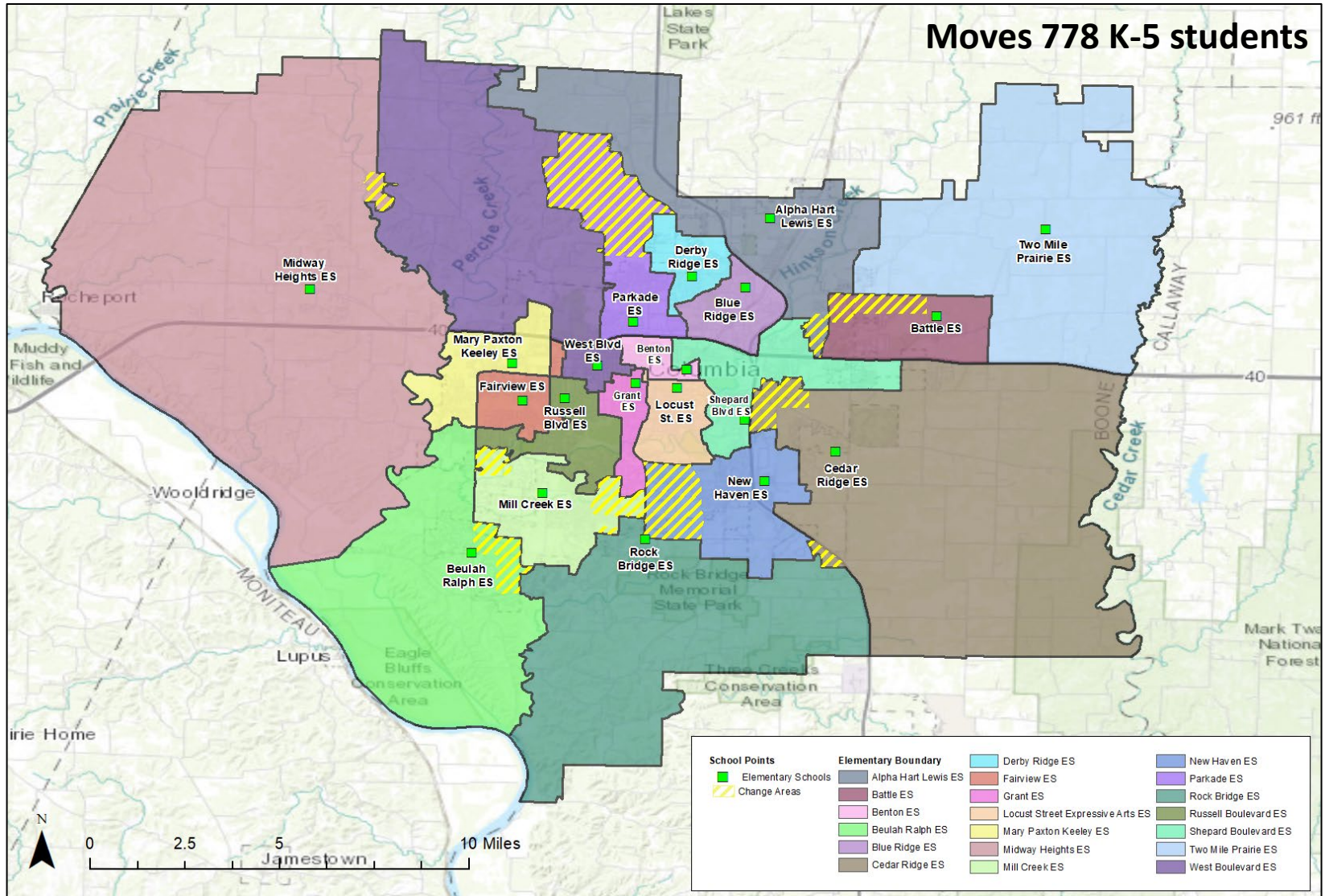
PHASE III

SCENARIO D PHASE III				
School	Capacity (No Trailers)	Live-In Enrollment	Utilization	Low SES %
Alpha Hart Lewis ES	650	558	86%	58%
Battle ES	450	417	93%	56%
Benton ES	260	134	52%	81%
Beulah Ralph ES	650	601	92%	22%
Blue Ridge ES	500	462	92%	66%
Cedar Ridge ES	650	519	80%	46%
Derby Ridge ES	556	479	86%	62%
Fairview ES	550	506	92%	28%
Grant ES	375	333	89%	36%
Locust Street Expressive Arts ES	250	97	39%	59%
Mary Paxton Keeley ES	723	683	94%	32%
Midway Heights ES	295	227	77%	28%
Mill Creek ES	673	638	95%	15%
New Haven ES	293	268	91%	55%
Parkade ES	478	440	92%	46%
Rock Bridge ES	650	567	87%	30%
Russell Boulevard ES	650	551	85%	25%
Shepard Boulevard ES	652	555	85%	52%
Two Mile Prairie ES	195	167	86%	34%
West Boulevard ES	438	343	78%	60%
TOTAL	9,938	8,545	86%	42%



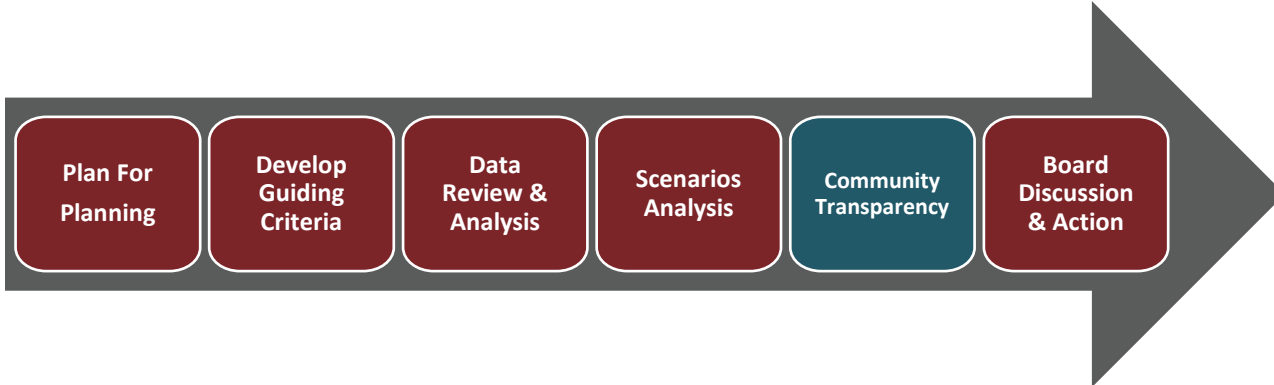
► SCENARIO D

CHANGE AREAS

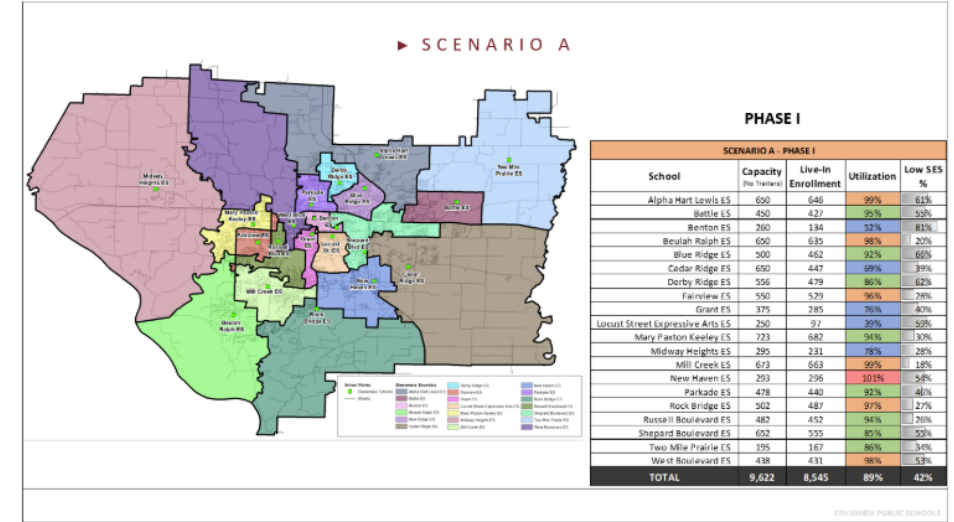


▶ NEXT STEPS

COMMUNITY FEEDBACK



- A narrated version of the presentation will be made available along with a school locator which will allow community members to identify impact in each of the four scenarios.
- An online survey will collect level of support information around each scenario as well an open-ended question for general feedback.
- In addition, small listening sessions will be held throughout the week of April 12th, to ensure that we are reaching each facet of the community.



1. Please select your level of support for Scenario A, independent from all other scenarios.

- Strongly Support
- Support
- Neutral
- Do Not Support
- Strongly Do Not Support

2. Please explain your answer above. Be sure to include anything you like or dislike about Scenario A.

