



MISSOURI

STATE PROFILE REPORT

03.12.2021

This week's State Profile Report makes data for each state available in the same format that has been provided to state officials in previous weeks. The weekly State Profile Reports are currently under review. The format and content may change in coming reports.

Effective March 5, 2021, data incorporated in the State Profile Reports are now being finalized on Fridays. Data for this week's report is therefore current as of March 12, 2021.

The purpose of this report is to develop a shared understanding of the current status of the pandemic at the national, regional, state, and local levels. We recognize that data at the state level may differ from that available at the federal level. Our objective is to use consistent data sources and methods that allow for comparisons to be made across localities. We appreciate your continued support in identifying data discrepancies and improving data completeness and sharing across systems. We look forward to your feedback. All inquiries and requests for information should be directed to COVID-Data-RFI@hhs.gov.



COVID-19



MISSOURI

STATE PROFILE REPORT | 03.12.2021

	STATE	STATE, % CHANGE FROM PREVIOUS WEEK	FEMA/HHS REGION	UNITED STATES		
NEW COVID-19 CASES (RATE PER 100,000)	85,151 (1,387)	+3,314%	92,429 (654)	464,152 (140)		
VIRAL (RT-PCR) LAB TEST POSITIVITY RATE	4.6%	+0.3%*	5.2%	4.1%		
TOTAL VIRAL (RT-PCR) LAB TESTS (TESTS PER 100,000)	29,633** (483**)	-5%**	155,205** (1,098**)	8,472,169** (2,552**)		
COVID-19 DEATHS (RATE PER 100,000)	149 (2.4)	-39%	281 (2.0)	10,133 (3.1)		
SNFs WITH ≥1 NEW RESIDENT COVID-19 CASE	3%†	-1%*	2%	5%		
SNFs WITH ≥1 NEW STAFF COVID-19 CASE	5%†	+1%*	5%	9%		
SNFs WITH ≥1 NEW RESIDENT COVID-19 DEATH	1%†	-1%*	1%	2%		
CONFIRMED AND SUSPECTED NEW COVID-19 HOSPITAL ADMISSIONS (RATE PER 100 BEDS)	1,806 (12)	-5% (-4%)	2,805 (8)	71,296 (10)		
CONFIRMED NEW COVID-19 HOSPITAL ADMISSIONS (RATE PER 100 BEDS)	453 (3)	-7% (-6%)	952 (3)	34,049 (5)		
NUMBER OF HOSPITALS WITH SUPPLY SHORTAGES (PERCENT)	6 (5%)	+20%	15 (3%)	360 (7%)		
NUMBER OF HOSPITALS WITH STAFF SHORTAGES (PERCENT)	20 (17%)	-13%	44 (9%)	678 (13%)		
COVID-19 VACCINE SUMMARY AS OF 3/12/2021	DOSES DELIVERED		RECEIVED AT LEAST ONE DOSE		FULLY VACCINATED	
	TOTAL	RATE PER 100,000	TOTAL	PERCENT OF POPULATION	TOTAL	PERCENT OF POPULATION
	2,383,325	38,832	1,110,044	18.1%	598,136	9.7%

* Indicates absolute change in percentage points.

** Due to delayed reporting, this figure may underestimate total diagnostic tests and week-on-week changes in diagnostic tests.

† 90% of facilities reported during the most current week.

DATA SOURCES

Note: Some dates may have incomplete data due to delays in reporting. Data may be backfilled over time, resulting in week-to-week changes.

Cases and Deaths: State values are aggregated data provided by the states to the CDC. Data is through 3/11/2021; previous week is from 2/26 to 3/4. Missouri data includes a historical backlog of 81,806 probable cases at the state level due to the addition of antigen case reporting. These are shown by date of report to CDC on 3/8.

Testing: HHS Protect laboratory data (provided directly to Federal Government from public health labs, hospital labs, and commercial labs). Test positivity through 3/9/2021; previous week is from 2/24 to 3/2. Test volume through 3/5/2021; previous week is from 2/20 to 2/26.

SNFs: Skilled nursing facilities. National Healthcare Safety Network. Data is through 3/7/2021, previous week is from 2/22 to 2/28.

Admissions: Unified Hospitals Dataset in HHS Protect. Data is through 3/10, previous week is from 2/25 to 3/3.

Shortages: Unified Hospitals Dataset in HHS Protect. Values presented show the latest reports from hospitals in the week ending 3/10/2021 for staffing and the week ending 3/10/2021 for supplies.

Vaccinations: [CDC COVID Data Tracker](#). Data includes the Moderna, Pfizer BioNTech, and J&J/Janssen COVID-19 vaccines and reflects current data available as of 14:21 EST on 03/12/2021. Data last updated 06:00 EST on 03/12/2021. Persons who are fully vaccinated include those who have received both doses of the Moderna or Pfizer-BioNTech vaccine as well as those who have received one dose of the J&J/Janssen vaccine. Allocations are made pro rata (equal based on population) from which jurisdictions are then to order. Currently, few persons under age 18 are being vaccinated; this group represents ~22% of the US population and the percentage varies by jurisdiction.

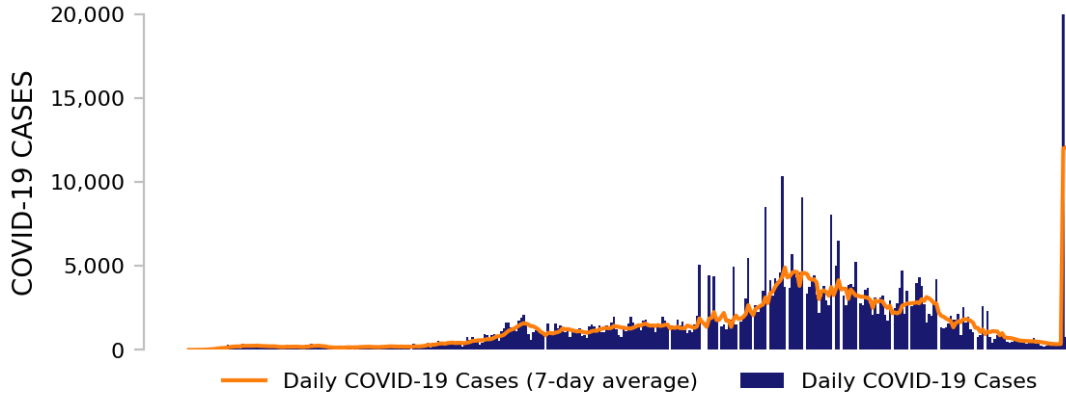
METHODS: Details available on last page of report.



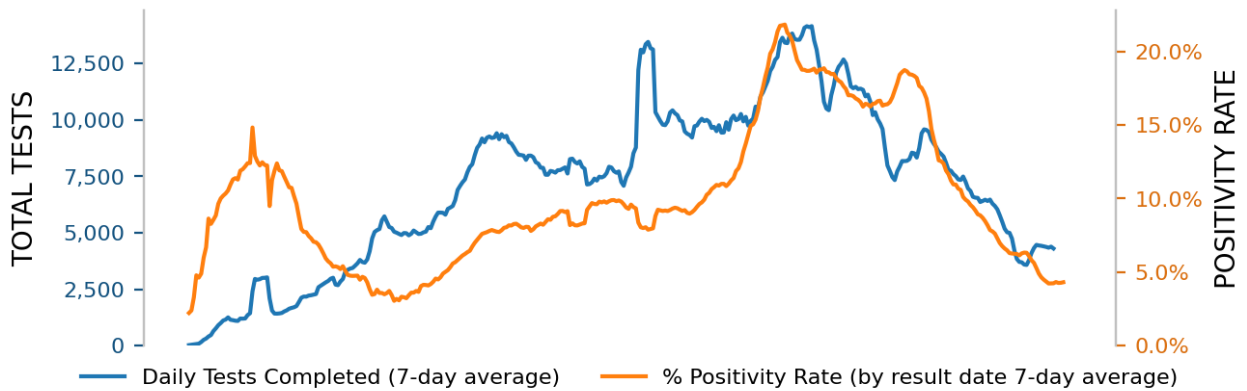
MISSOURI

STATE PROFILE REPORT | 03.12.2021

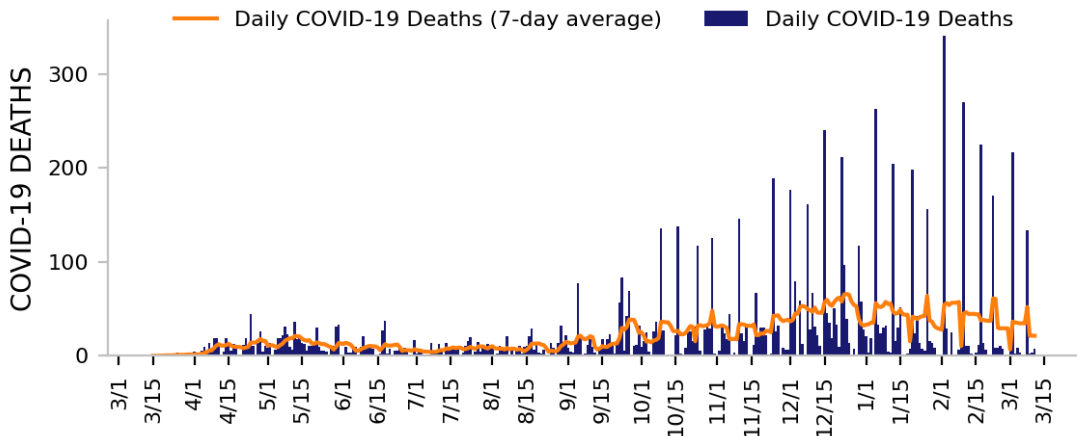
NEW CASES



TESTING



NEW DEATHS



DATA SOURCES

Note: Some dates may have incomplete data due to delays in reporting. Data may be backfilled over time, resulting in week-to-week changes.

Cases and Deaths: State values are aggregated data provided by the states to the CDC. Data is through 3/11/2021. Missouri data includes a historical backlog of 81,806 probable cases at the state level due to the addition of antigen case reporting. These are shown by date of report to CDC on 3/8.

Testing: HHS Protect laboratory data (provided directly to Federal Government from public health labs, hospital labs, and commercial labs). Test positivity through 3/9/2021. Test volume through 3/5/2021.

METHODS: Details available on last page of report.

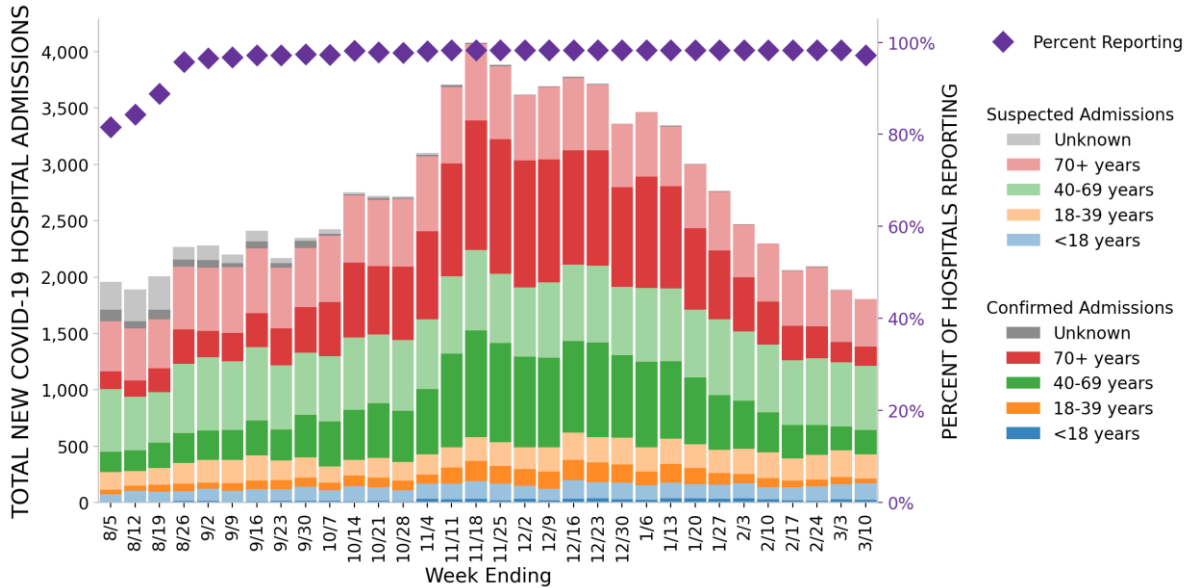


MISSOURI

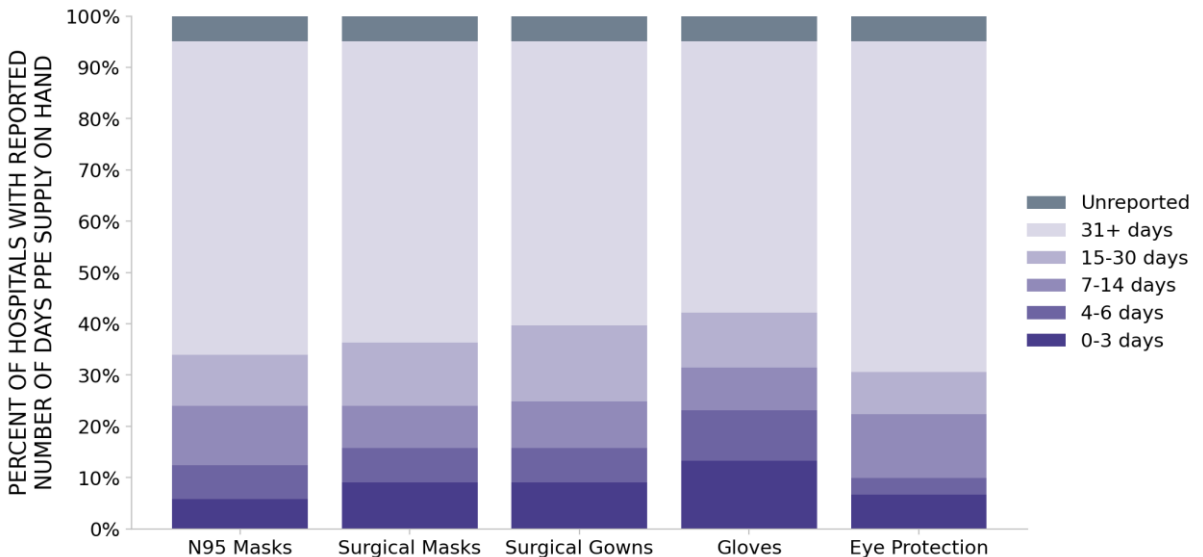
STATE PROFILE REPORT | 03.12.2021

121 hospitals are expected to report in Missouri

HOSPITAL ADMISSIONS



HOSPITAL PPE SUPPLIES



DATA SOURCES

Hospitalizations: Unified Hospitals Dataset in HHS Protect. These data exclude psychiatric, rehabilitation, and religious non-medical hospitals. Hospitals explicitly identified by states/regions as those from which we should not expect reports were excluded from the percent reporting figure. Data is through 3/10/2021.

PPE: Unified Hospitals Dataset in HHS Protect. These data exclude psychiatric, rehabilitation, and religious non-medical hospitals. Values presented show the latest reports from hospitals in the week ending 3/10/2021.

METHODS: Details available on last page of report.



MISSOURI

STATE PROFILE REPORT | 03.12.2021

COVID-19 COUNTY AND METRO ALERTS*

Based on new cases and test positivity in the last week, top 12 shown in table (full lists below)

METRO AREA (CBSA)

COUNTIES

LOCALITIES IN RED ZONE	0 ■ (+0)	N/A	3 ▲ (+2)	Crawford St. Clair Benton
LOCALITIES IN ORANGE ZONE	1 ▲ (+1)	Sedalia	3 ▲ (+2)	Pettis Stone Vernon
LOCALITIES IN YELLOW ZONE	5 ▼ (-2)	Joplin Branson Sikeston Warrensburg Kirksville	13 ▼ (-6)	St. Charles Jefferson Clay Cass Franklin Christian Taney Lincoln Johnson Scott Newton Lawrence
Change from previous week's alerts:		▲ Increase ■ Stable ▼ Decrease		

All Yellow Counties: St. Charles, Jefferson, Clay, Cass, Franklin, Christian, Taney, Lincoln, Johnson, Scott, Newton, Lawrence, Gasconade

* Localities with fewer than 10 cases last week have been excluded from these alerts.

Note: Lists of red, orange, and yellow localities are sorted by the number of new cases in the last 3 weeks, from highest to lowest. Some dates may have incomplete data due to delays in reporting. Data may be backfilled over time, resulting in week-to-week changes.

DATA SOURCES

Cases: CBSA and county values are calculated by aggregating county-level data from a CDC-managed dataset compiled from state and local health departments; therefore, the values may not match those reported directly by the state. Data is through 3/11/2021. Missouri data includes a historical backlog of 81,806 probable cases at the state level due to the addition of antigen case reporting. These are shown by date of report to CDC on 3/8.

Testing: HHS Protect laboratory data (provided directly to Federal Government from public health labs, hospital labs, and commercial labs) through 3/9/2021.

METHODS: Details available on last page of report.

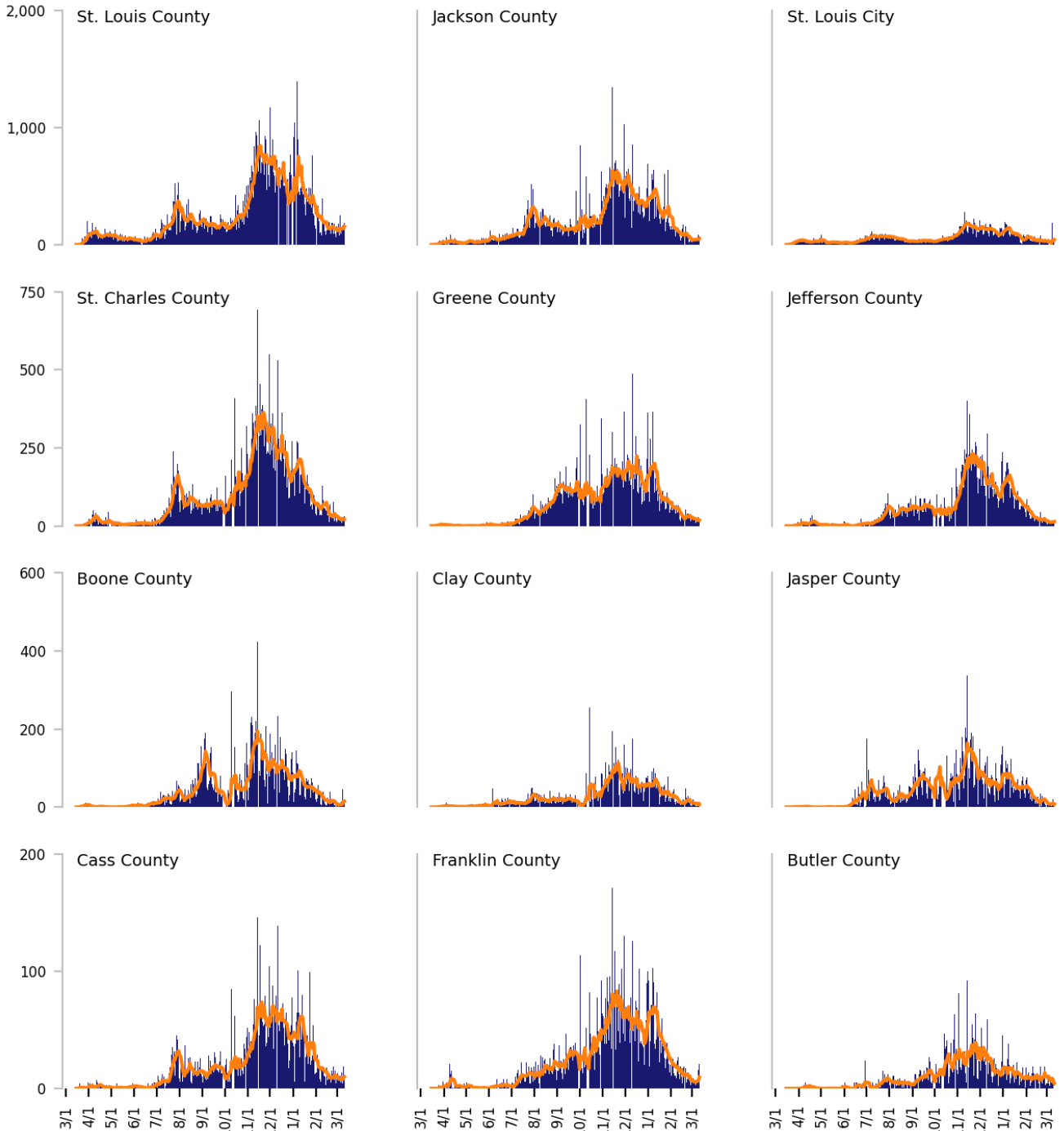


Top 12 counties based on number of new cases in the last 3 weeks

The scale is fixed per row based on the historical peak number of daily cases*

— Daily COVID-19 Cases (7-day average) ■ Daily COVID-19 Cases

TOTAL DAILY CASES



* The vertical scale of plots is fixed per row based on the historical peak number of daily cases; use caution when comparing visuals across different rows.

DATA SOURCES

Cases: County-level data is from a CDC managed aggregate county dataset compiled from state and local health departments; therefore, the values may not match those reported directly by the state. Data is through 3/11/2021. Last 3 weeks is from 2/19 to 3/11. Missouri data includes a historical backlog of 81,806 probable cases at the state level due to the addition of antigen case reporting. These are shown by date of report to CDC on 3/8. Counties are listed in order of the number of cases in the last three weeks, from largest to smallest.

METHODS: Details available on last page of report.

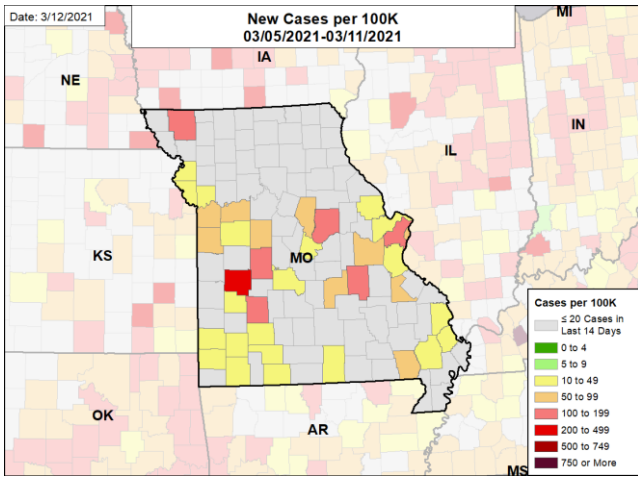


MISSOURI

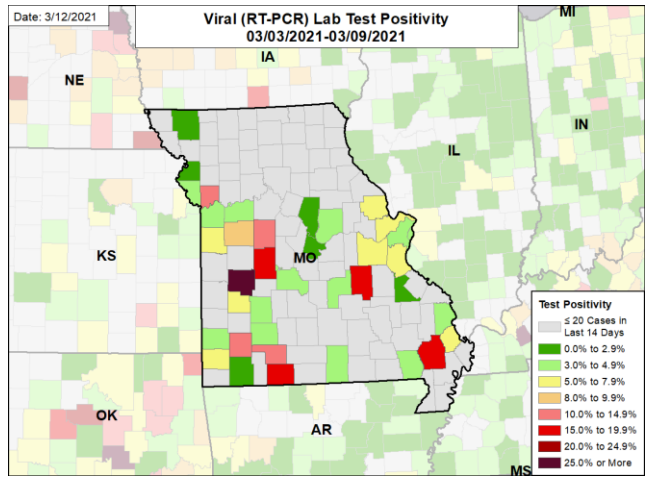
STATE PROFILE REPORT | 03.12.2021

CASE RATES AND VIRAL LAB TEST POSITIVITY

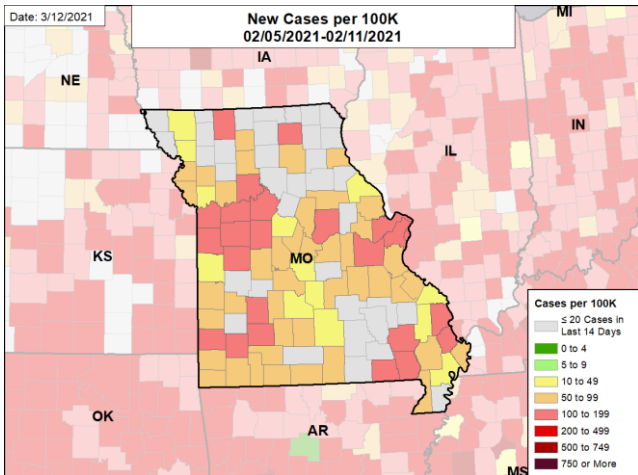
NEW CASES PER 100,000



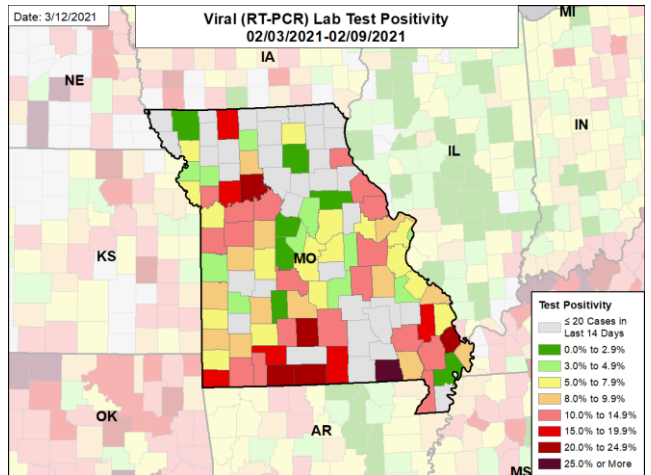
VIRAL (RT-PCR) LABORATORY TEST POSITIVITY



NEW CASES PER 100,000 ONE MONTH BEFORE



VIRAL (RT-PCR) LABORATORY TEST POSITIVITY ONE MONTH BEFORE



DATA SOURCES

Note: Some dates may have incomplete data due to delays in reporting. Data may be backfilled over time, resulting in week-to-week changes.

Cases: County-level data is from a CDC managed aggregate county dataset compiled from state and local health departments; therefore, the values may not match those reported directly by the state. Data is through 3/11/2021. The week one month before is from 2/5 to 2/11. Missouri data includes a historical backlog of 81,806 probable cases at the state level due to the addition of antigen case reporting. These are shown by date of report to CDC on 3/8.

Testing: HHS Protect laboratory data (provided directly to Federal Government from public health labs, hospital labs, and commercial labs) through 3/9/2021; week one month before is from 2/3 to 2/9.

METHODS: Details available on last page of report.

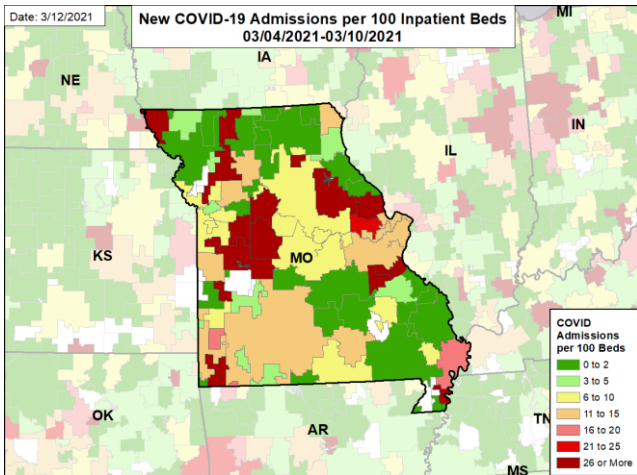


MISSOURI

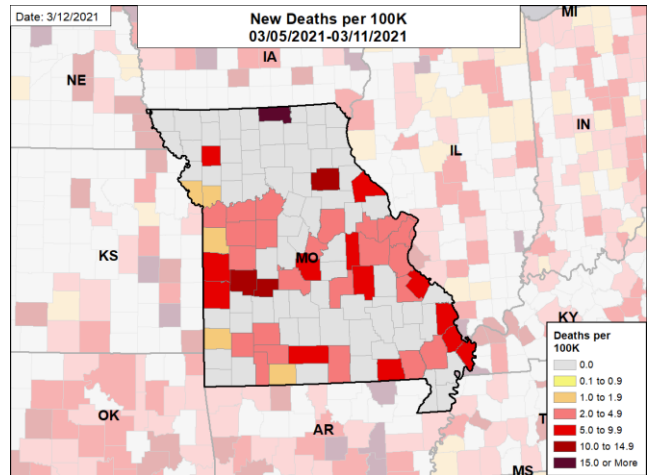
STATE PROFILE REPORT | 03.12.2021

HOSPITAL ADMISSIONS AND DEATH RATES

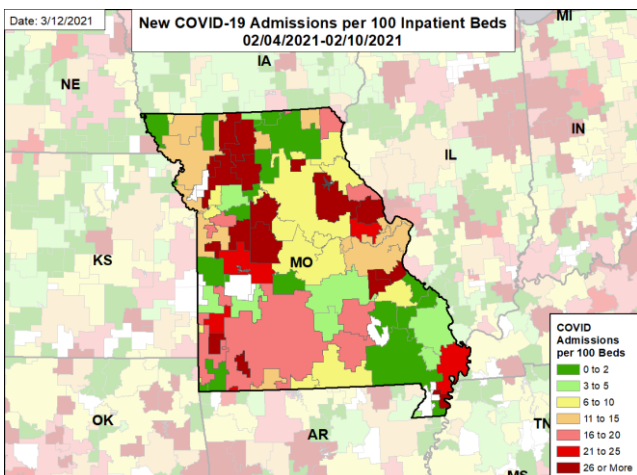
CONFIRMED AND SUSPECTED NEW COVID-19 ADMISSIONS PER 100 INPATIENT BEDS



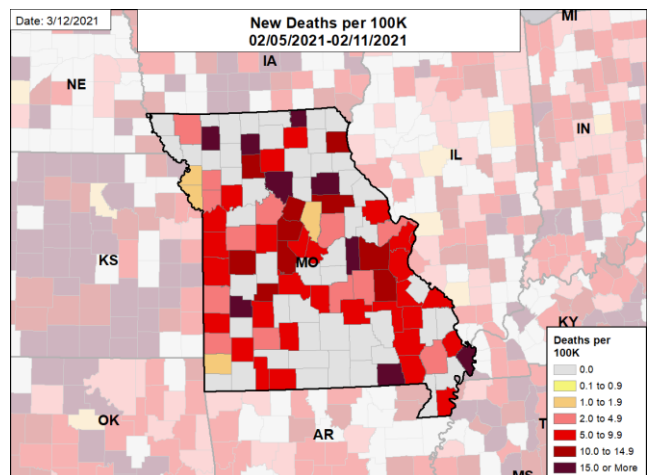
NEW DEATHS PER 100,000



CONFIRMED AND SUSPECTED NEW COVID-19 ADMISSIONS PER 100 INPATIENT BEDS ONE MONTH BEFORE



NEW DEATHS PER 100,000 ONE MONTH BEFORE



DATA SOURCES

Note: Some dates may have incomplete data due to delays in reporting. Data may be backfilled over time, resulting in week-to-week changes.

Deaths: County-level data is from a CDC managed aggregate county dataset compiled from state and local health departments; therefore, the values may not match those reported directly by the state. Data is through 3/11/2021. The week one month before is from 2/5 to 2/11.

Hospitalizations: Unified Hospitals Dataset in HHS Protect. Totals include confirmed and suspected COVID-19 admissions. Data is through 3/10/2021. The week one month before is from 2/4 to 2/10.

METHODS: Details available on last page of report.