



## MISSOURI

### STATE PROFILE REPORT

02.14.2021

This week's State Profile Report makes data for each state available in the same format that has been provided to state officials in previous weeks. The weekly State Profile Reports are currently under review. The format and content may change in coming reports.

*The purpose of this report is to develop a shared understanding of the current status of the pandemic at the national, regional, state, and local levels. We recognize that data at the state level may differ from that available at the federal level. Our objective is to use consistent data sources and methods that allow for comparisons to be made across localities. We appreciate your continued support in identifying data discrepancies and improving data completeness and sharing across systems. We look forward to your feedback. All inquiries and requests for information should be directed to [COVID-Data-RFI@hhs.gov](mailto:COVID-Data-RFI@hhs.gov).*



**COVID-19**



## MISSOURI

STATE PROFILE REPORT | 02.14.2021

	STATE	STATE, % CHANGE FROM PREVIOUS WEEK	FEMA/HHS REGION	UNITED STATES		
NEW COVID-19 CASES (RATE PER 100,000)	5,304 (86)	-31%	16,540 (117)	675,717 (204)		
VIRAL (RT-PCR) LAB TEST POSITIVITY RATE	7.0%	-1.7%*	7.0%	6.6%		
TOTAL VIRAL (RT-PCR) LAB TESTS (TESTS PER 100,000)	38,528** (628**)	-13%**	188,618** (1,334**)	8,672,493** (2,612**)		
COVID-19 DEATHS (RATE PER 100,000)	311 (5.1)	-21%	764 (5.4)	21,457 (6.5)		
SNFs WITH ≥1 NEW RESIDENT COVID-19 CASE	9%†	-4%*	8%	14%		
SNFs WITH ≥1 NEW STAFF COVID-19 CASE	14%†	-8%*	14%	22%		
SNFs WITH ≥1 NEW RESIDENT COVID-19 DEATH	5%†	-3%*	4%	8%		
CONFIRMED AND SUSPECTED NEW COVID-19 HOSPITAL ADMISSIONS (RATE PER 100 BEDS)	2,167 (15)	-14% (-13%)	3,562 (10)	100,706 (14)		
CONFIRMED NEW COVID-19 HOSPITAL ADMISSIONS (RATE PER 100 BEDS)	773 (5)	-24% (-24%)	1,581 (5)	57,563 (8)		
NUMBER OF HOSPITALS WITH SUPPLY SHORTAGES (PERCENT)	6 (5%)	+0%	12 (3%)	355 (7%)		
NUMBER OF HOSPITALS WITH STAFF SHORTAGES (PERCENT)	24 (21%)	+9%	45 (10%)	783 (15%)		
COVID-19 VACCINE SUMMARY	DOSES DELIVERED		1ST DOSE ADMINISTERED		2ND DOSE ADMINISTERED	
	TOTAL	RATE PER 100,000	TOTAL	PERCENT OF POPULATION	TOTAL	PERCENT OF POPULATION
	1,129,975	18,411	613,292	10.0%	225,467	3.7%

\* Indicates absolute change in percentage points.

\*\* Due to delayed reporting, this figure may underestimate total diagnostic tests and week-on-week changes in diagnostic tests.

† 89% of facilities reported during the most current week.

## DATA SOURCES

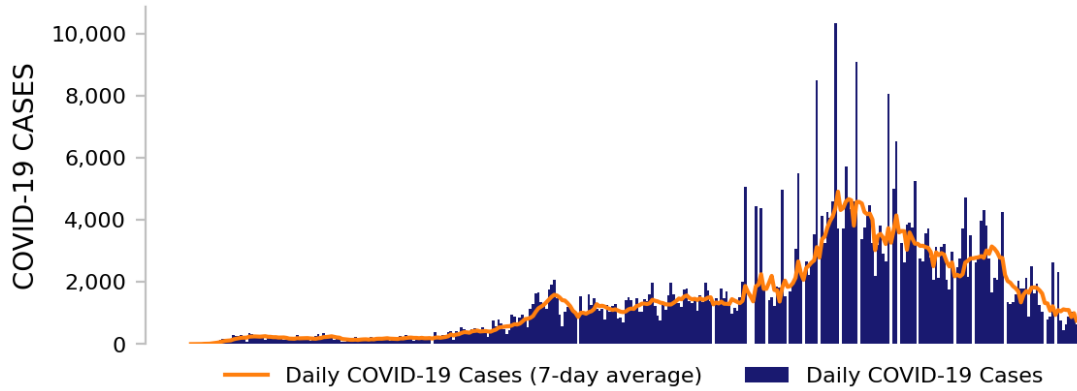
**Note:** Some dates may have incomplete data due to delays in reporting. Data may be backfilled over time, resulting in week-to-week changes.**Cases and Deaths:** State values are aggregated data provided by the states to the CDC. Data is through 2/12/2021; previous week is from 1/30 to 2/5.**Testing:** HHS Protect laboratory data (provided directly to Federal Government from public health labs, hospital labs, and commercial labs) through 2/10/2021. Previous week is from 1/28 to 2/3.**SNFs:** Skilled nursing facilities. National Healthcare Safety Network. Data is through 2/7/2021, previous week is from 1/25 to 1/31.**Admissions:** Unified Hospitals Dataset in HHS Protect. Data is through 2/12, previous week is from 1/30 to 2/5.**Shortages:** Unified Hospitals Dataset in HHS Protect. Values presented show the latest reports from hospitals in the week ending 2/12/2021.**Vaccinations:** [CDC COVID Data Tracker](#). Data includes both the Moderna and Pfizer BioNTech COVID-19 vaccines and reflects current data available as of 16:41 EST on 02/14/2021. Data last updated 06:00 EST on 02/14/2021. Persons who received one or more doses are currently attributed to the jurisdiction in which they received the vaccine. Allocations are made pro rata (equal based on population) from which jurisdictions are then to order. Currently, few persons under age 18 are being vaccinated; this group represents ~22% of the US population and the percentage varies by jurisdiction.**METHODS:** Details available on last page of report.



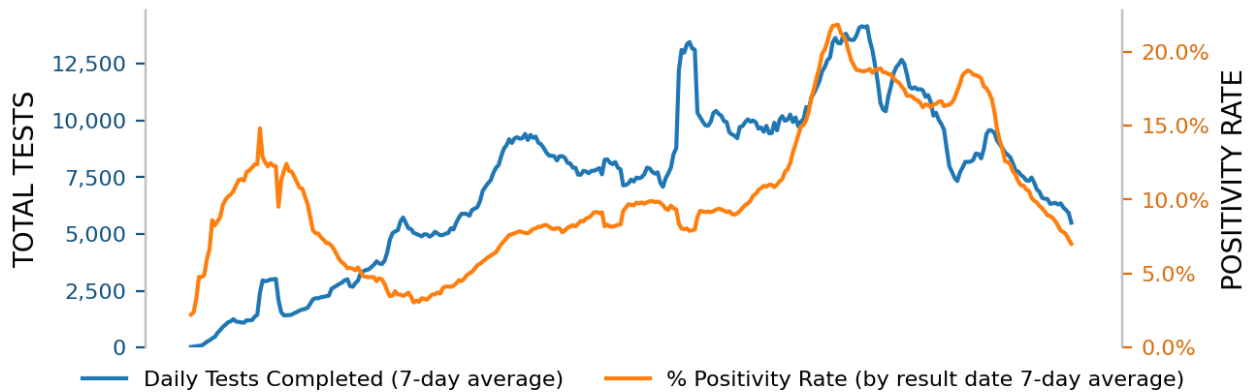
# MISSOURI

STATE PROFILE REPORT | 02.14.2021

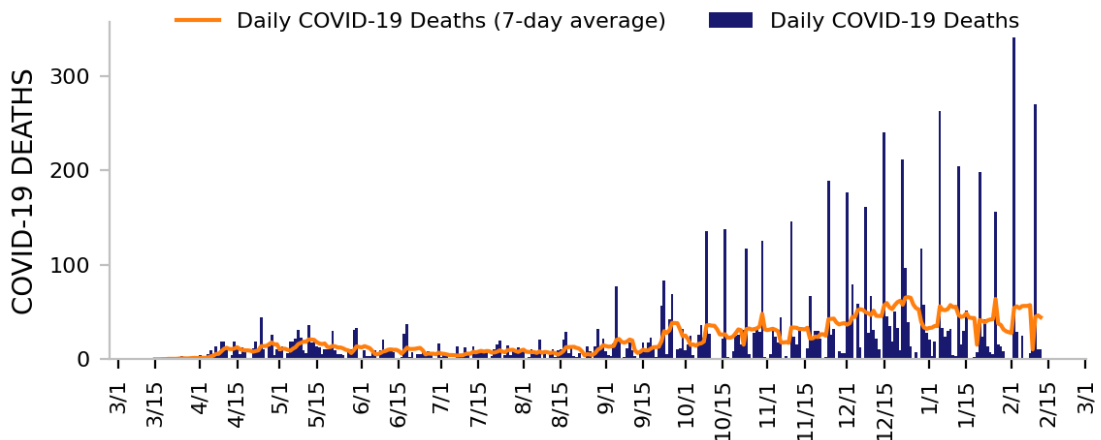
## NEW CASES



## TESTING



## NEW DEATHS



### DATA SOURCES

**Note:** Some dates may have incomplete data due to delays in reporting. Data may be backfilled over time, resulting in week-to-week changes.

**Cases and Deaths:** State values are aggregated data provided by the states to the CDC. Data is through 2/12/2021.

**Testing:** HHS Protect laboratory data (provided directly to Federal Government from public health labs, hospital labs, and commercial labs) through 2/10/2021.

**METHODS:** Details available on last page of report.

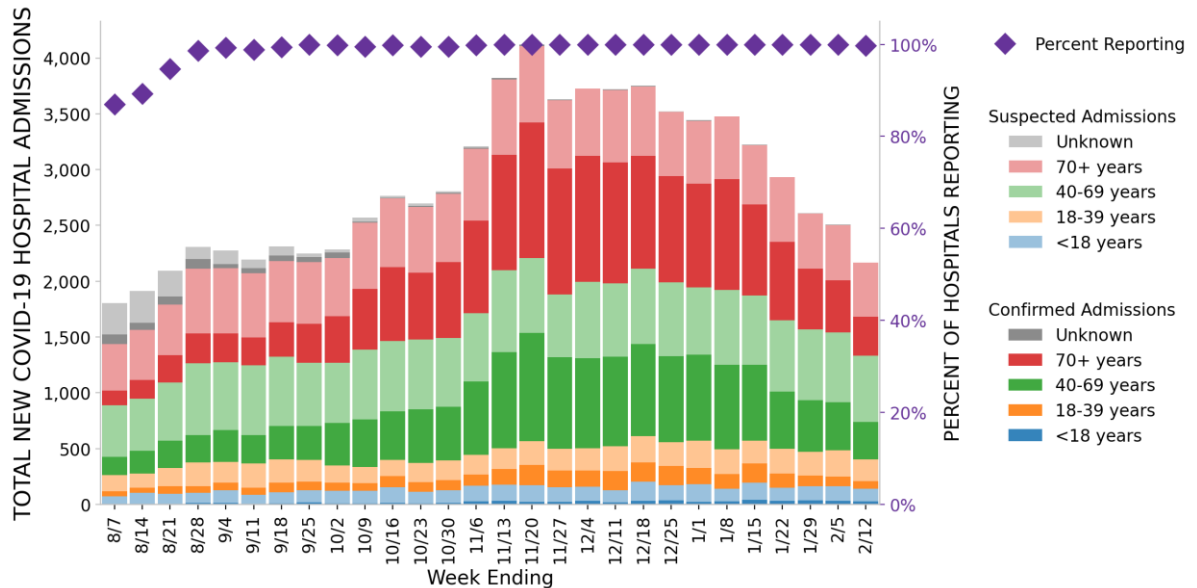


# MISSOURI

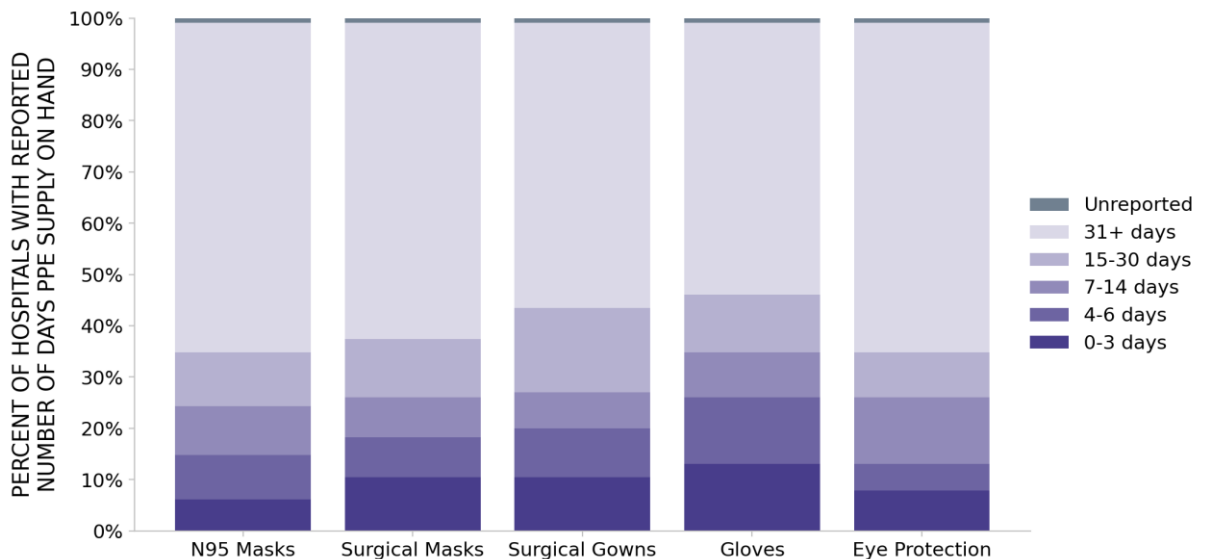
STATE PROFILE REPORT | 02.14.2021

115 hospitals are expected to report in Missouri

## HOSPITAL ADMISSIONS



## HOSPITAL PPE SUPPLIES



### DATA SOURCES

**Hospitalizations:** Unified Hospitals Dataset in HHS Protect. These data exclude psychiatric, rehabilitation, and religious non-medical hospitals. Hospitals explicitly identified by states/regions as those from which we should not expect reports were excluded from the percent reporting figure. Data is through 2/12/2021.

**PPE:** Unified Hospitals Dataset in HHS Protect. These data exclude psychiatric, rehabilitation, and religious non-medical hospitals. Values presented show the latest reports from hospitals in the week ending 2/10/2021.

**METHODS:** Details available on last page of report.



# MISSOURI

STATE PROFILE REPORT | 02.14.2021

## COVID-19 COUNTY AND METRO ALERTS\*

Based on new cases and test positivity in the last week, top 12 shown in table (full lists below)

	METRO AREA (CBSA)	COUNTIES
LOCALITIES IN RED ZONE	<b>2</b> ▼ (-3) Warrensburg Sikeston	<b>7</b> ▼ (-26) Johnson Lawrence Scott Ripley Carroll Harrison Scotland
LOCALITIES IN ORANGE ZONE	<b>7</b> ▼ (-4) Jefferson City Poplar Bluff Branson Marshall West Plains Hannibal Kennett	<b>28</b> ▲ (+2) St. Charles Jefferson Cass Franklin Christian Lincoln Callaway Taney Butler Lafayette Camden Stone
LOCALITIES IN YELLOW ZONE	<b>10</b> ▲ (+3) St. Louis Kansas City Springfield Joplin Cape Girardeau Sedalia Lebanon Kirksville Fort Leonard Wood Fort Madison-Keokuk	<b>19</b> ▲ (+1) St. Louis Jackson Greene St. Louis City Jasper Clay Cape Girardeau Cole Platte Pettis Newton Laclede
Change from previous week's alerts:           ▲ Increase           ■ Stable           ▼ Decrease		

**All Orange Counties:** St. Charles, Jefferson, Cass, Franklin, Christian, Lincoln, Callaway, Taney, Butler, Lafayette, Camden, Stone, Webster, Saline, Ray, Barry, Howell, Dunklin, Washington, Wright, Marion, Vernon, Osage, McDonald, Mississippi, Barton, Wayne, Ralls

**All Yellow Counties:** St. Louis, Jackson, Greene, St. Louis City, Jasper, Clay, Cape Girardeau, Cole, Platte, Pettis, Newton, Laclede, Warren, Adair, Henry, Stoddard, Crawford, Pulaski, Montgomery

\* Localities with fewer than 10 cases last week have been excluded from these alerts.

**Note:** Lists of red, orange, and yellow localities are sorted by the number of new cases in the last 3 weeks, from highest to lowest. Some dates may have incomplete data due to delays in reporting. Data may be backfilled over time, resulting in week-to-week changes.

### DATA SOURCES

**Cases:** CBSA and county values are calculated by aggregating county-level data from a CDC-managed dataset compiled from state and local health departments; therefore, the values may not match those reported directly by the state. Data is through 2/12/2021.

**Testing:** HHS Protect laboratory data (provided directly to Federal Government from public health labs, hospital labs, and commercial labs) through 2/10/2021.

**METHODS:** Details available on last page of report.

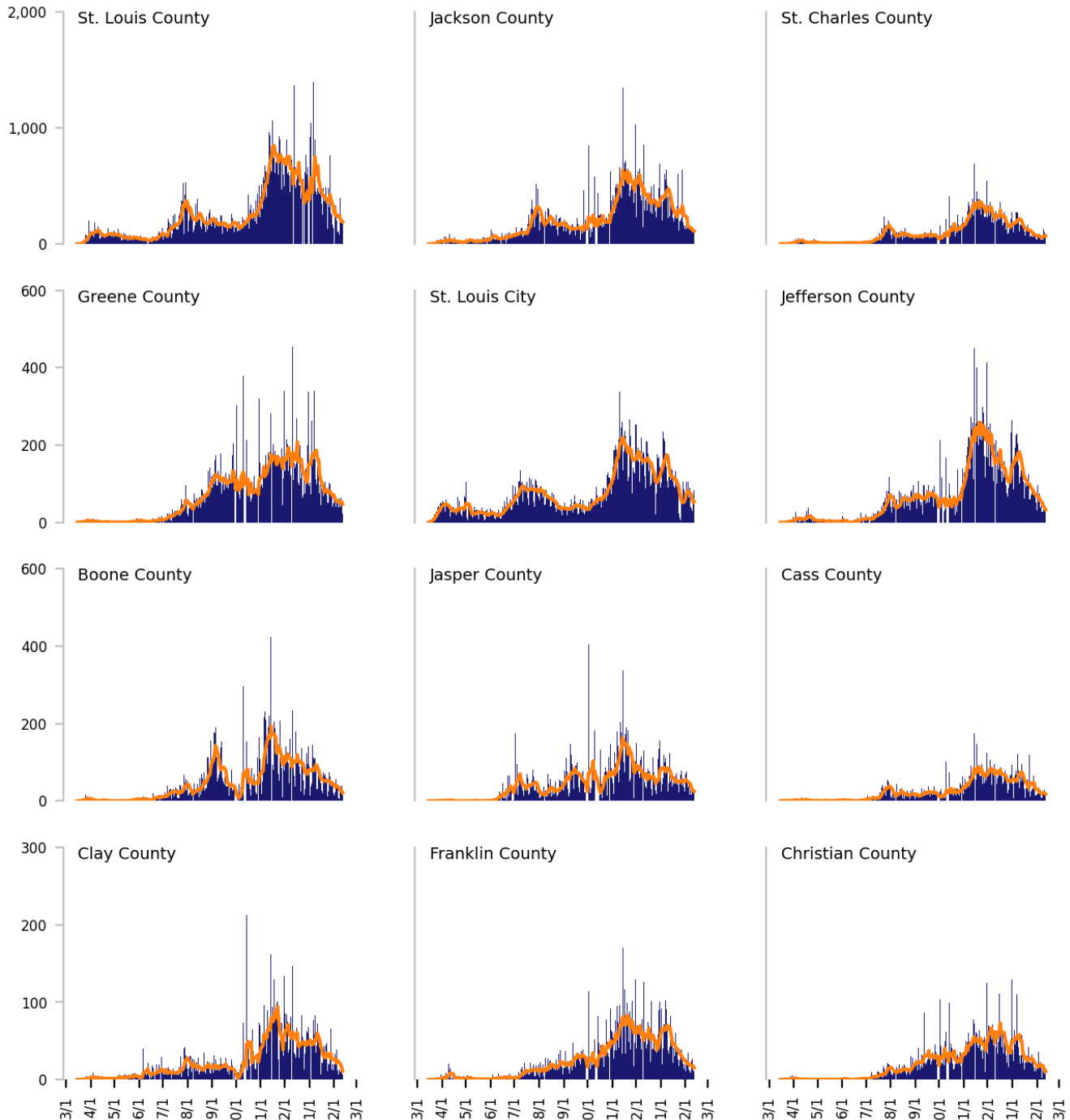


# Top 12 counties based on number of new cases in the last 3 weeks

The scale is fixed per row based on the historical peak number of daily cases\*

— Daily COVID-19 Cases (7-day average)    ■ Daily COVID-19 Cases

TOTAL DAILY CASES



\* The vertical scale of plots is fixed per row based on the historical peak number of daily cases; use caution when comparing visuals across different rows.

## DATA SOURCES

**Cases:** County-level data is from a CDC managed aggregate county dataset compiled from state and local health departments; therefore, the values may not match those reported directly by the state. Data is through 2/12/2021. Last 3 weeks is from 1/23 to 2/12. Counties are listed in order of the number of cases in the last three weeks, from largest to smallest.

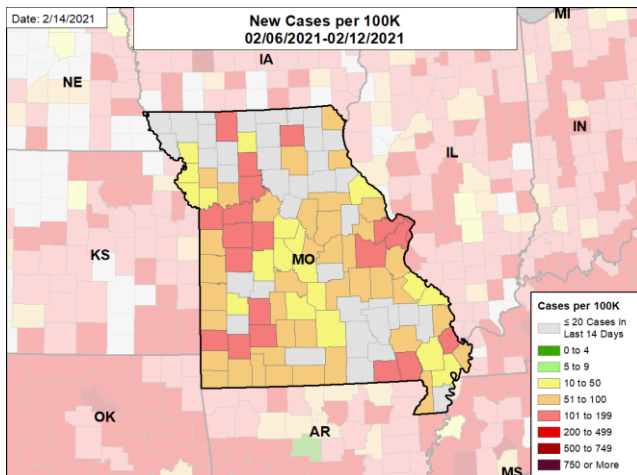
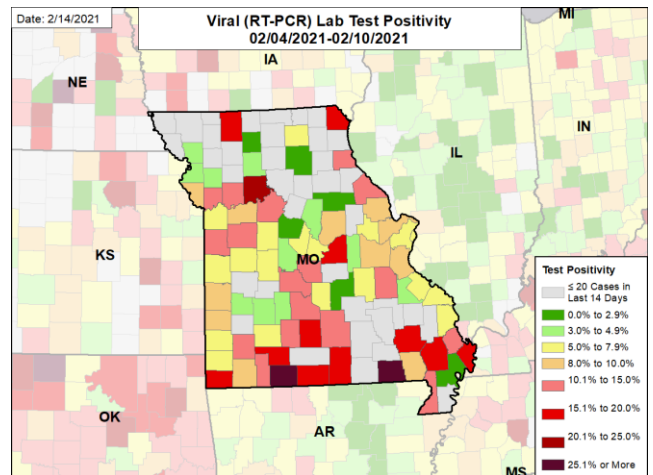
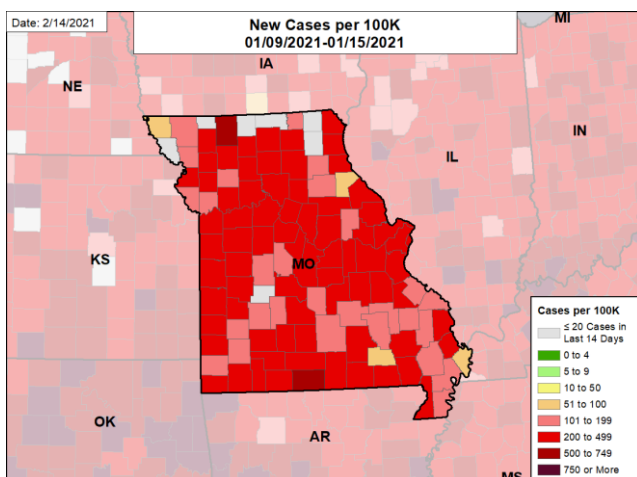
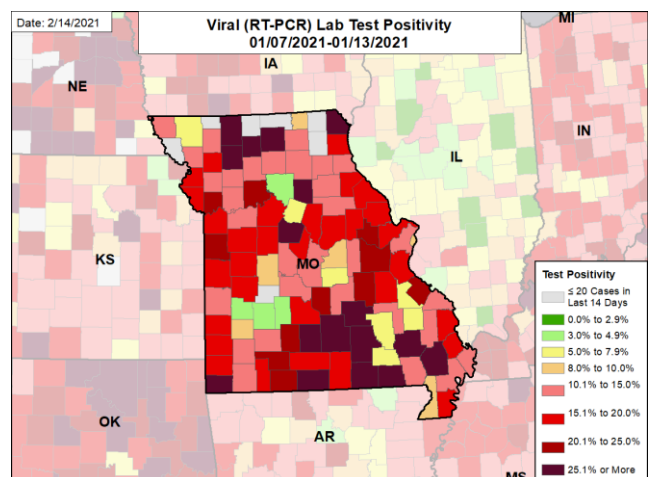
**METHODS:** Details available on last page of report.



# MISSOURI

STATE PROFILE REPORT | 02.14.2021

## CASE RATES AND VIRAL LAB TEST POSITIVITY

**NEW CASES PER 100,000****VIRAL (RT-PCR) LABORATORY TEST POSITIVITY****NEW CASES PER 100,000 ONE MONTH BEFORE****VIRAL (RT-PCR) LABORATORY TEST POSITIVITY ONE MONTH BEFORE**

### DATA SOURCES

**Note:** Some dates may have incomplete data due to delays in reporting. Data may be backfilled over time, resulting in week-to-week changes.

**Cases:** County-level data is from a CDC managed aggregate county dataset compiled from state and local health departments; therefore, the values may not match those reported directly by the state. Data is through 2/12/2021. The week one month before is from 1/9 to 1/15.

**Testing:** HHS Protect laboratory data (provided directly to Federal Government from public health labs, hospital labs, and commercial labs) through 2/10/2021; week one month before is from 1/7 to 1/13.

**METHODS:** Details available on last page of report.

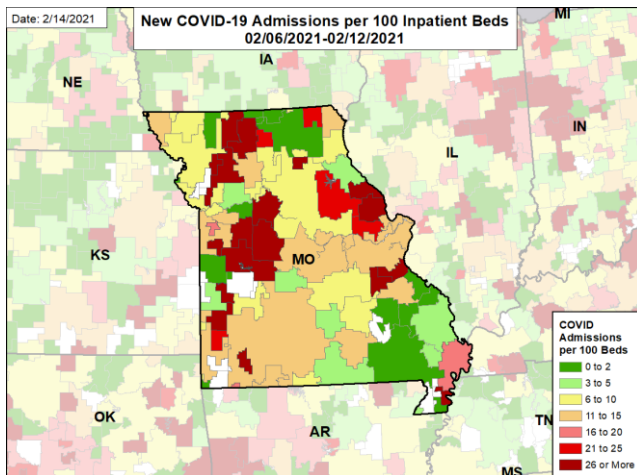


# MISSOURI

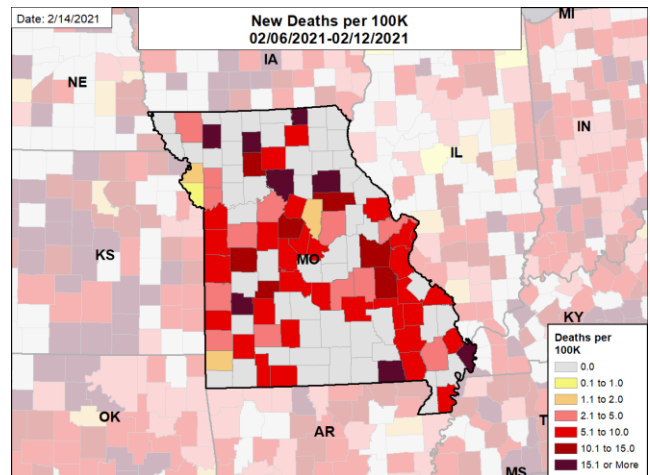
STATE PROFILE REPORT | 02.14.2021

## HOSPITAL ADMISSIONS AND DEATH RATES

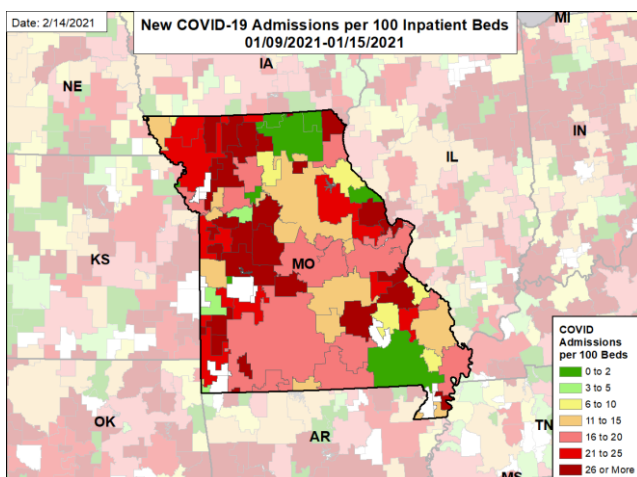
### CONFIRMED AND SUSPECTED NEW COVID-19 ADMISSIONS PER 100 INPATIENT BEDS



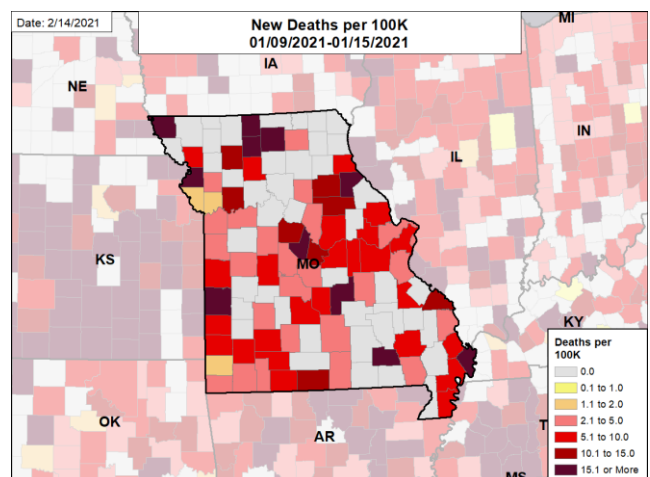
### NEW DEATHS PER 100,000



### CONFIRMED AND SUSPECTED NEW COVID-19 ADMISSIONS PER 100 INPATIENT BEDS ONE MONTH BEFORE



### NEW DEATHS PER 100,000 ONE MONTH BEFORE



#### DATA SOURCES

**Note:** Some dates may have incomplete data due to delays in reporting. Data may be backfilled over time, resulting in week-to-week changes.

**Deaths:** County-level data is from a CDC managed aggregate county dataset compiled from state and local health departments; therefore, the values may not match those reported directly by the state. Data is through 2/12/2021. The week one month before is from 1/9 to 1/15.

**Hospitalizations:** Unified Hospitals Dataset in HHS Protect. Totals include confirmed and suspected COVID-19 admissions. Data is through 2/12/2021. The week one month before is from 1/9 to 1/15.

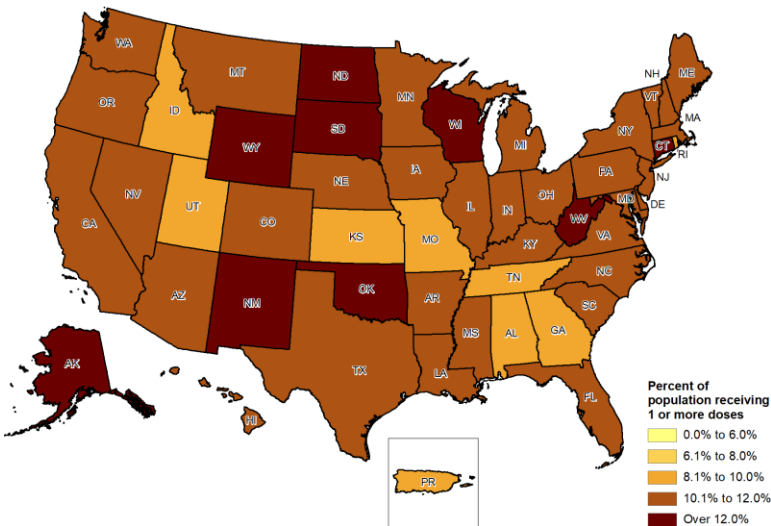
**METHODS:** Details available on last page of report.



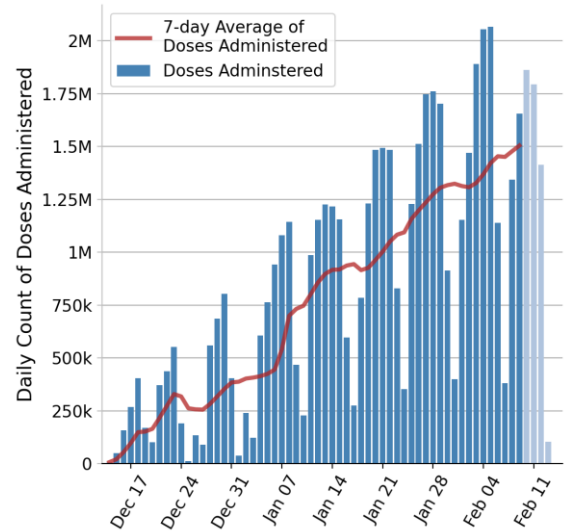


# National Picture

PERCENT OF POPULATION RECEIVING 1 OR MORE VACCINE DOSES



DAILY NATIONAL COUNT OF VACCINE DOSES ADMINISTERED BY DATE OF ADMINISTRATION



## NATIONAL COVID-19 VACCINE SUMMARY

TOTAL DOSES DELIVERED  
(RATE PER 100,000)

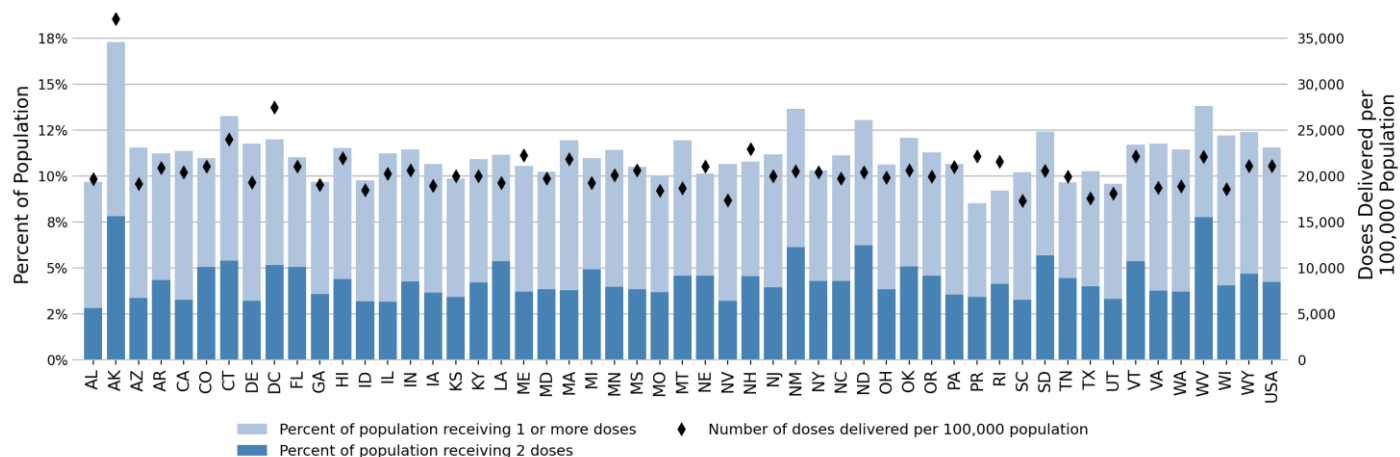
70,057,800  
(21,101)

TOTAL 1ST DOSE ADMINISTERED  
(PERCENT OF POPULATION)

38,292,270  
(11.5%)

TOTAL 2ND DOSE ADMINISTERED  
(PERCENT OF POPULATION)

14,077,440  
(4.2%)



### DATA SOURCES

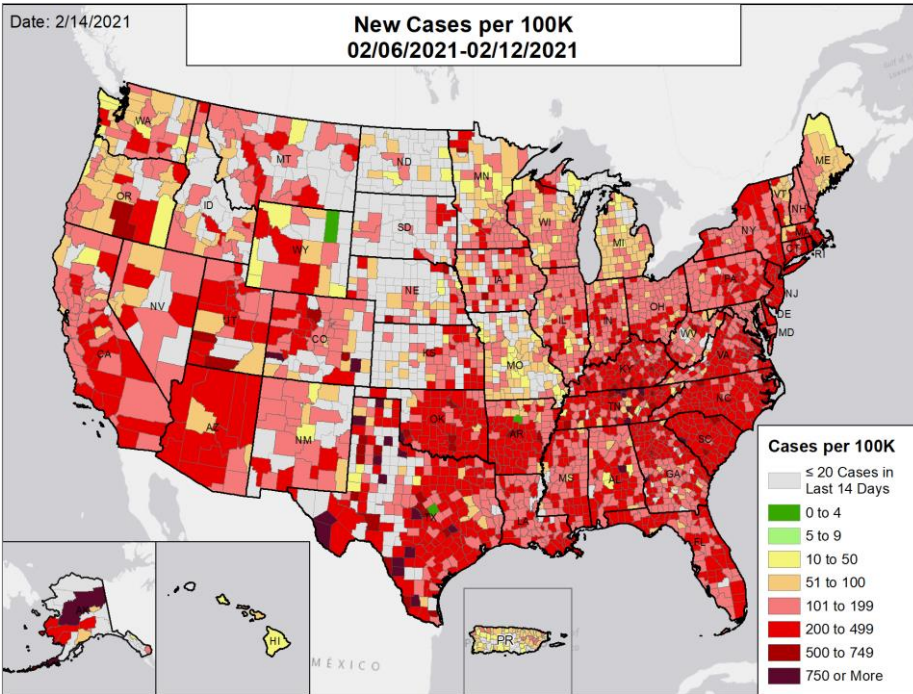
**Vaccinations:** [CDC COVID Data Tracker](#). Data includes both the Moderna and Pfizer BioNTech COVID-19 vaccines and reflects current data available as of 16:41 EST on 02/14/2021. Data last updated 06:00 EST on 02/14/2021. Persons who received one or more doses are currently attributed to the jurisdiction in which they received the vaccine. Allocations are made pro rata (equal based on population) from which jurisdictions are then to order. Currently, few persons under age 18 are being vaccinated; this group represents ~22% of the US population and the percentage varies by jurisdiction. Due to delays in reporting, data on doses administered in recent days (as reflected by lighter blue coloring in the Daily National Count figure) may be an underestimate of the actual value.

**METHODS:** Details available on last page of report.



# National Picture

## NEW CASES PER 100,000

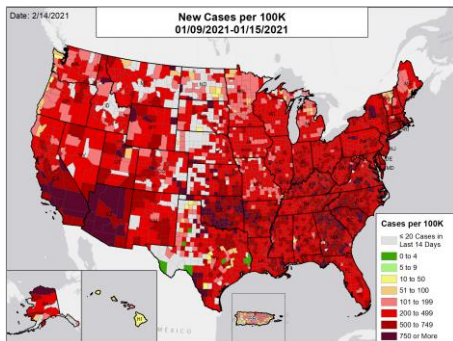


## NATIONAL RANKING OF NEW CASES PER 100,000

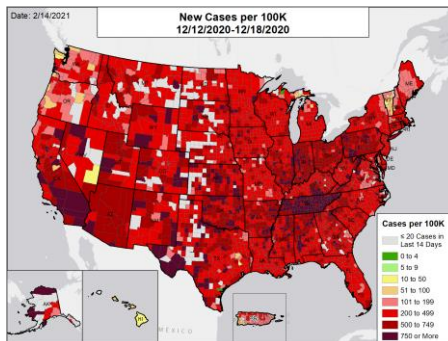
National Rank	State	National Rank	State
1	SC	27	IN
2	NY	28	KS
3	OK	29	CO
4	NJ	30	MT
5	DE	31	NV
6	RI	32	DC
7	TX	33	IA
8	KY	34	NM
9	NC	35	AK
10	VA	36	IL
11	AZ	37	MD
12	GA	38	VT
13	FL	39	SD
14	AR	40	ID
15	CT	41	WI
16	TN	42	NE
17	UT	43	WA
18	MA	44	ME
19	PA	45	MN
20	AL	46	WY
21	LA	47	MO
22	MS	48	MI
23	CA	49	OR
24	NH	50	PR
25	WV	51	ND
26	OH	52	HI

## NEW CASES PER 100,000 IN THE WEEK:

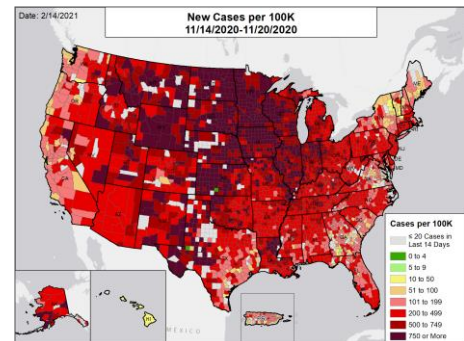
### ONE MONTH BEFORE



### TWO MONTHS BEFORE



### THREE MONTHS BEFORE



## DATA SOURCES

**Note:** Some dates may have incomplete data due to delays in reporting. Data may be backfilled over time, resulting in week-to-week changes.

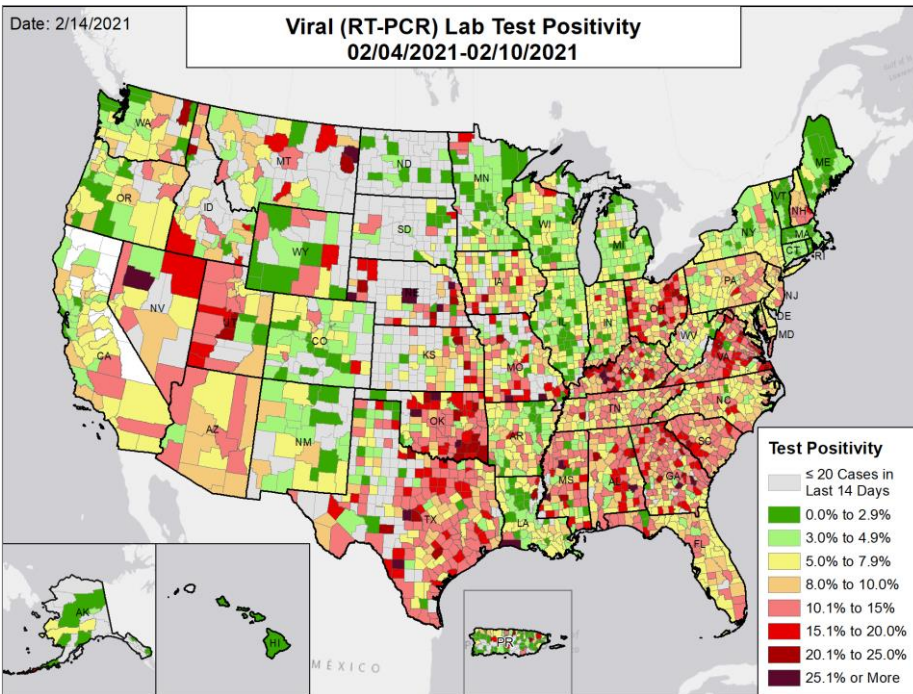
**Cases:** County-level data is from a CDC managed aggregate county dataset compiled from state and local health departments; therefore, the values may not match those reported directly by the state. State values are aggregated data provided by the states to the CDC. The week one month before is from 1/9 to 1/15; the week two months before is from 12/12 to 12/18; the week three months before is from 11/14 to 11/20.

**METHODS:** Details available on last page of report.



# National Picture

## VIRAL (RT-PCR) LAB TEST POSITIVITY

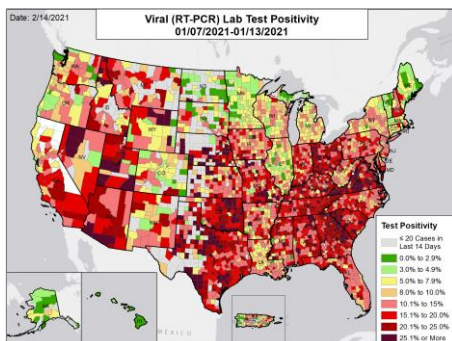


## NATIONAL RANKING OF TEST POSITIVITY

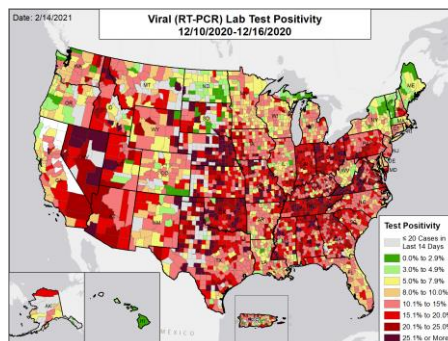
National Rank	State	National Rank	State
1	OK	27	CA
2	NH	28	PR
3	TX	29	OH
4	NV	30	MD
5	VA	31	DE
6	SC	32	IN
7	KY	33	LA
8	GA	34	OR
9	UT	35	WA
10	MS	36	SD
11	AL	37	NM
12	AZ	38	MI
13	FL	39	CO
14	NJ	40	CT
15	TN	41	IL
16	ID	42	WI
17	NC	43	DC
18	IA	44	MN
19	PA	45	WY
20	WV	46	AK
21	MO	47	MA
22	KS	48	ME
23	NE	49	RI
24	NY	50	VT
25	MT	51	ND
26	AR	52	HI

## VIRAL (RT-PCR) LAB TEST POSITIVITY IN THE WEEK:

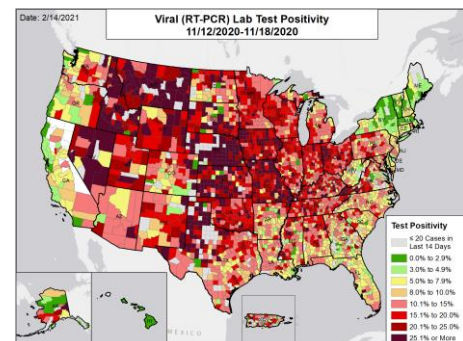
### ONE MONTH BEFORE



### TWO MONTHS BEFORE



### THREE MONTHS BEFORE



## DATA SOURCES

**Note:** Some dates may have incomplete data due to delays in reporting. Data may be backfilled over time, resulting in week-to-week changes.

**Testing:** Combination of CELR (COVID-19 Electronic Lab Reporting) state health department-reported data and HHS Protect laboratory data (provided directly to Federal Government from public health labs, hospital labs, and commercial labs) through 2/10/2021. The week one month before is from 1/7 to 1/13; the week two months before is from 12/10 to 12/16; the week three months before is from 11/12 to 11/18.

**METHODS:** Details available on last page of report

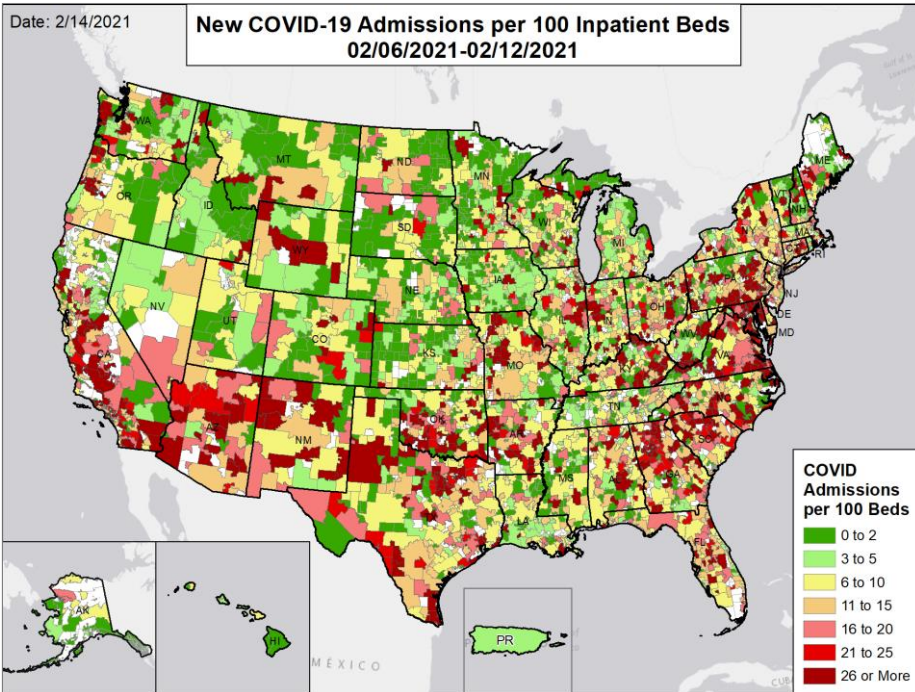




# National Picture

CONFIRMED AND SUSPECTED NEW COVID-19 ADMISSIONS PER 100 INPATIENT BEDS

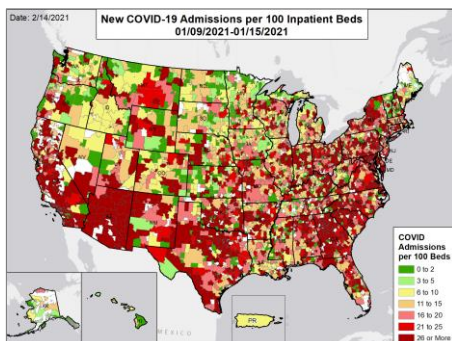
NATIONAL RANKING OF CONFIRMED AND SUSPECTED ADMISSIONS PER 100 BEDS



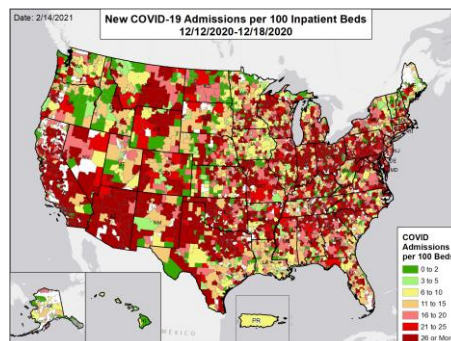
National Rank	State	National Rank	State
1	MD	27	OR
2	DC	28	IN
3	AZ	29	MA
4	KY	30	CO
5	GA	31	KS
6	VA	32	NH
7	SC	33	WA
8	OK	34	WI
9	PA	35	MT
10	TX	36	ME
11	CA	37	VT
12	NJ	38	TN
13	AR	39	NE
14	AL	40	UT
15	MO	41	ND
16	IL	42	MS
17	NV	43	LA
18	OH	44	MN
19	WV	45	SD
20	DE	46	MI
21	NC	47	ID
22	NY	48	RI
23	WY	49	HI
24	FL	50	IA
25	NM	51	PR
26	CT	52	AK

CONFIRMED AND SUSPECTED NEW COVID-19 ADMISSIONS PER 100 INPATIENT BEDS IN THE WEEK:

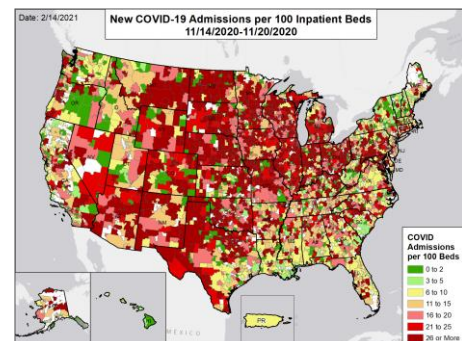
## ONE MONTH BEFORE



## TWO MONTHS BEFORE



## THREE MONTHS BEFORE



## DATA SOURCES

**Note:** Some dates may have incomplete data due to delays in reporting. Data may be backfilled over time, resulting in week-to-week changes.

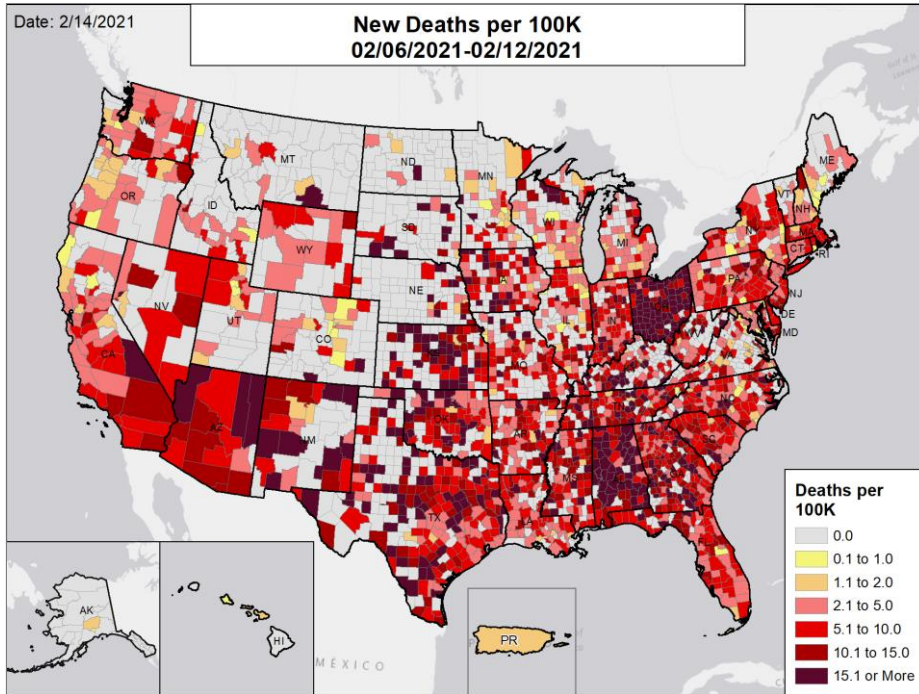
**Admissions:** Unified Hospitals Dataset in HHS Protect through 2/12/2021. Totals include confirmed and suspected COVID-19 admissions. The week one month before is from 1/9 to 1/15; the week two months before is from 12/12 to 12/18; the week three months before is from 11/14 to 11/20.

**METHODS:** Details available on last page of report



# National Picture

## NEW DEATHS PER 100,000

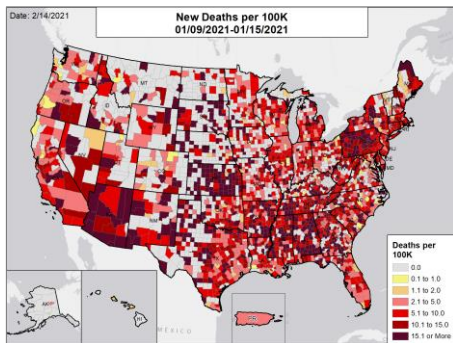


## NATIONAL RANKING OF NEW DEATHS PER 100,000

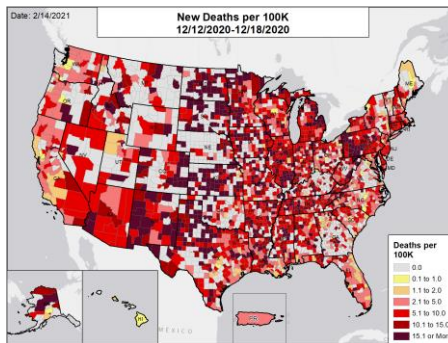
National Rank	State	National Rank	State
1	OH	27	MO
2	AL	28	IA
3	AZ	29	CT
4	KS	30	LA
5	DE	31	WY
6	GA	32	SD
7	CA	33	MD
8	RI	34	IL
9	OK	35	WA
10	TN	36	MI
11	MA	37	WI
12	TX	38	VA
13	SC	39	NH
14	MS	40	OR
15	NV	41	ID
16	IN	42	UT
17	KY	43	NE
18	NM	44	MT
19	NY	45	MN
20	NJ	46	CO
21	PA	47	PR
22	WV	48	VT
23	AR	49	ME
24	FL	50	HI
25	NC	51	AK
26	DC	52	ND

## NEW DEATHS PER 100,000 IN THE WEEK:

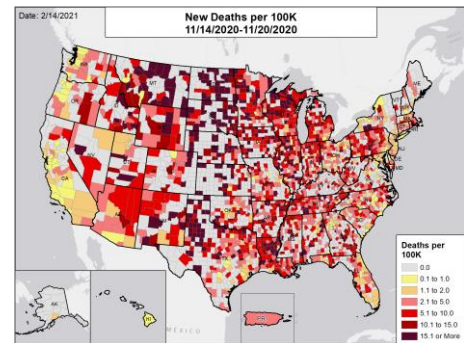
### ONE MONTH BEFORE



### TWO MONTHS BEFORE



### THREE MONTHS BEFORE



## DATA SOURCES

**Note:** Some dates may have incomplete data due to delays in reporting. Data may be backfilled over time, resulting in week-to-week changes.

**Deaths:** County-level data is from a CDC managed aggregate county dataset compiled from state and local health departments; therefore, the values may not match those reported directly by the state. State values are aggregated data provided by the states to the CDC. The week one month before is from 1/9 to 1/15; the week two months before is from 12/12 to 12/18; the week three months before is from 11/14 to 11/20.

**METHODS:** Details available on last page of report.



# METHODS

## STATE PROFILE REPORT | 02.14.2021

Metric	Dark Green	Light Green	Yellow	Orange	Light Red	Red	Dark Red	Darkest Red
New cases per 100,000 population per week	≤4	5 – 9	10 – 50	51 – 100	101 – 199	200 – 499	500 – 749	≥750
Percent change in new cases per 100,000 population	≤-26%	-25% – -11%	-10% – 0%	1% – 10%	11% – 99%	100% – 999%	≥1000%	
Diagnostic test result positivity rate	≤2.9%	3.0% – 4.9%	5.0% – 7.9%	8.0% – 10.0%	10.1% – 15.0%	15.1% – 20.0%	20.1% – 25.0%	≥25.1%
Change in test positivity	≤-2.1%	-2.0% – -0.6%	-0.5% – 0.0%	0.1% – 0.5%	0.6% – 2.0%		≥2.1%	
Total diagnostic tests resulted per 100,000 population per week	≥5000	3001 – 4999	2000 – 2999	1000 – 1999	500 – 999		≤499	
Percent change in tests per 100,000 population	≥26%	11% – 25%	1% – 10%	-10% – 0%	-25% – -11%		≤-26%	
COVID-19 deaths per 100,000 population per week	0.0		0.1 – 1.0	1.1 – 2.0	2.1 – 5.0	5.1 – 10.0	10.1 – 15.0	≥15.1
Percent change in deaths per 100,000 population	≤-26%	-25% – -11%	-10% – 0%	1% – 10%	11% – 25%		≥26%	
Skilled Nursing Facilities with at least one resident COVID-19 case, death	0%		1% – 5%		≥6%			
Change in SNFs with at least one resident COVID-19 case, death	≤-2%		-1% – 1%		≥2%			
Confirmed and suspected new COVID-19 hospital admissions per 100 beds	≤2	3 – 5	6 – 10	11 – 15	16 – 20	21 – 25	≥26	
Confirmed new COVID-19 hospital admissions per 100 beds	≤1	2 – 3	4 – 5	6 – 10	11 – 15	16 – 20	≥21	
Change in new COVID-19 hospital admissions per 100 beds	≤-26%	-25% – -11%	-10% – 0%	1% – 10%	11% – 25%		≥26%	
Percent of hospitals with supply/staff shortages	≤9%		10% – 19%	20% – 29%	30% – 39%		≥40%	
Change in percent of hospitals with supply/staff shortages	≤-10%	-9% – -5%	-4% – 0%	1% – 4%	5% – 9%		≥10%	

- Some dates may have incomplete data due to delays and/or differences in state reporting. Data may be backfilled over time, resulting in week-to-week changes. It is critical that states provide as up-to-date data as possible. Figures and values may also differ from state reports due to differing methodologies.
- Color threshold values are rounded before color classification.
- Cases and Deaths:** County-level data is from a CDC-managed aggregate county dataset compiled from state and local health departments; therefore, the values may not match those reported directly by the state. State values are aggregated data provided by the states to the CDC. Data is as of 14:03 EST on 02/14/2021.
- Testing:** The data presented represent viral COVID-19 laboratory diagnostic and screening test (reverse transcription polymerase chain reaction, RT-PCR) results—not individual people—and exclude antibody and antigen tests, unless stated otherwise. CELR (COVID-19 Electronic Lab Reporting) state health department-reported data are used to describe county-level viral COVID-19 RT-PCR result totals when information is available on patients' county of residence or healthcare providers' practice location. HHS Protect laboratory data (provided directly to Federal Government from public health labs, hospital labs, and commercial labs) are used otherwise. Because the data are deidentified, total RT-PCR tests are the number of tests performed, not the number of individuals tested. RT-PCR test positivity rate is the number of positive tests divided by the number of tests performed and resulted. Last week data are from 2/4 to 2/10; previous week data are from 1/28 to 2/3; the week one month before data are from 1/7 to 1/13. HHS Protect data is recent as of 13:08 EST on 02/14/2021. Testing data are inclusive of everything received and processed by the CELR system as of 19:00 EST on 02/13/2021.
- Hospitalizations:** Unified Hospitals Dataset in HHS Protect. These data exclude psychiatric, rehabilitation, and religious non-medical hospitals. In addition, hospitals explicitly identified by states/regions as those from which we should not expect reports were excluded from the percent reporting figure. The data presented represents raw data provided; we are working diligently with state liaisons to improve reporting consistency. Data is recent as of 13:06 EST on 02/14/2021.
- Hospital PPE:** Unified Hospitals Dataset in HHS Protect. This figure may differ from state data due to differences in hospital lists and reporting between federal and state systems. These data exclude psychiatric, rehabilitation, and religious non-medical hospitals. Hospitals explicitly identified by states/regions as those from which we should not expect reports were excluded from the percent reporting figure. Data is recent as of 14:57 EST on 02/14/2021.
- Skilled Nursing Facilities:** National Healthcare Safety Network (NHSN). Data report resident and staff cases independently. Quality checks are performed on data submitted to the NHSN. Data that fail these quality checks or appear inconsistent with surveillance protocols may be excluded from analyses. Data presented in this report are more recent than data publicly posted by CMS. Last week is 2/1-2/7, previous week is 1/25-1/31.
- County and Metro Area Color Categorizations**
  - Red Zone:** Those core-based statistical areas (CBSAs) and counties that during the last week reported both new cases at or above 101 per 100,000 population, and a lab test positivity result at or above 10.1%.
  - Orange Zone:** Those CBSAs and counties that during the last week reported both new cases between 51–100 per 100,000 population, and a lab test positivity result between 8.0–10.0%, or one of those two conditions and one condition qualifying as being in the “Red Zone.”
  - Yellow Zone:** Those CBSAs and counties that during the last week reported both new cases between 10–50 per 100,000 population, and a lab test positivity result between 5.0–7.9%, or one of those two conditions and one condition qualifying as being in the “Orange Zone” or “Red Zone.”
- Shortages:** Unified Hospitals Dataset in HHS Protect. These data exclude psychiatric, rehabilitation, and religious non-medical hospitals. Includes hospitals currently reporting a staffing shortage. Low supply is defined as a hospital reporting they are not able to maintain a 3-day supply of N95s, face masks, gloves, gowns, or eye protection. Data is recent as of 14:57 EST on 02/14/2021.
- Vaccinations:** [CDC COVID Data Tracker](#). Data includes both the Moderna and Pfizer BioNTech COVID-19 vaccines and reflects current data available as of 16:41 EST on 02/14/2021. Data last updated 06:00 EST on 02/14/2021. Persons who received one or more doses are currently attributed to the jurisdiction in which they received the vaccine. Allocations are made pro rata (equal based on population) from which jurisdictions are then to order. Because COVID-19 vaccines available in the U.S. are authorized only for persons ≥16 years of age (Pfizer-BioNTech) or ≥18 years of age (Moderna), currently few persons under age 18 are being vaccinated; this group represents ~22% of the U.S. population and the percentage varies by jurisdiction.