



## MISSOURI

### SUMMARY

- Missouri is in the red zone for cases, indicating 101 or more new cases per 100,000 population last week, with the 11th highest rate in the country. Missouri is in the orange zone for test positivity, indicating a rate between 8.0% and 10.0%, with the 8th highest rate in the country.
- Missouri continues to see high levels of new cases and high test positivity over the last week.
- The following three counties had the highest number of new cases over the last 3 weeks: 1. Jackson County, 2. St. Louis County, and 3. Greene County. These counties represent 29.0% of new cases in Missouri.
- 74% of all counties in Missouri have moderate or high levels of community transmission (yellow, orange, or red zones), with 44% having high levels of community transmission (red zone).
- During the week of Sep 21 - Sep 27, 19% of nursing homes had at least one new resident COVID-19 case, 36% had at least one new staff COVID-19 case, and 6% had at least one new resident COVID-19 death.
- Missouri had 155 new cases per 100,000 population in the last week, compared to a national average of 90 per 100,000.
- Current staff deployed from the federal government as assets to support the state response are: 74 to support operations activities from FEMA; 5 to support operations activities from ASPR; 2 to support epidemiology activities from CDC; 1 to support operations activities from CDC; 33 to support medical activities from VA; and 1 to support operations activities from VA.
- Between Sep 26 - Oct 2, on average, 132 patients with confirmed COVID-19 and 194 patients with suspected COVID-19 were reported as newly admitted each day to hospitals in Missouri. An average of greater than 95% of hospitals reported either new confirmed or new suspected COVID patients each day during this period.

### RECOMMENDATIONS

- Cases, test positivity, and new hospital admissions continue to stay at high levels statewide, with transmission in rural and urban areas. Keep testing rates high to rapidly find and isolate COVID-19 cases.
- Messaging to communities about effectiveness of masks is critical as many outdoor activities will be moving indoors with colder weather approaching. Masks must be worn indoors in all public settings and group gathering sizes should be limited.
- Work with rural communities to message how masks work and protect individuals from COVID-19.
- Over one-third of nursing homes have at least one positive staff member and the trend among residents with COVID-19 is increasing. Use these findings not only to prevent transmission in nursing homes but also as sentinel surveillance indicating spread in the community and work on local mitigation efforts. Review specific nursing homes where community transmission is low, but staff have COVID-19.
- Abbott BinaxNOW tests should be used in a sentinel surveillance capacity. Sentinel surveillance among specific populations across Missouri will help provide specific information to each community regarding local transmission and where mitigation efforts needed to be enhanced.
- Prioritize these populations for routine sentinel surveillance: K-12 teachers; staff working in nursing homes, assisted living, senior living facilities, and other congregate living settings including correctional facilities; and first responders.
- Antivirals and antibodies have the most impact when used early in hospital admissions (within 48 hours). Ensure hospitals are effectively administering these medications to prevent morbidity and mortality.
- Conduct community testing in university towns to rapidly identify positives and isolate them. With cases potentially decreasing in university settings, work with students to keep cases down, particularly with the goal to keep transmission low until Thanksgiving.
- Specific, detailed guidance on community mitigation measures can be found on the [CDC website](#).





# MISSOURI

STATE REPORT | 10.04.2020

	STATE, LAST WEEK	STATE, % CHANGE FROM PREVIOUS WEEK	FEMA/HHS REGION, LAST WEEK	UNITED STATES, LAST WEEK
NEW COVID-19 CASES (RATE PER 100,000)	9,488 (155)	-4%	24,114 (171)	294,477 (90)
VIRAL (RT-PCR) LAB TEST POSITIVITY RATE	9.2%	-0.1%*	8.5%	4.6%
TOTAL VIRAL (RT-PCR) LAB TESTS (TESTS PER 100,000)	61,558** (1,003)	-13%**	238,314** (1,685)	6,436,385** (1,961)
COVID-19 DEATHS (RATE PER 100,000)	156 (2.5)	-26%	311 (2.2)	4,935 (1.5)
SNFs WITH ≥1 NEW RESIDENT COVID-19 CASE (≥1 NEW STAFF CASE)	19% (36%)	+2%* (+0%*)	14% (30%)	9% (20%)
SNFs WITH ≥1 NEW RESIDENT COVID-19 DEATH	6%	+1%*	5%	3%

## MOBILITY



\* Indicates absolute change in percentage points.

\*\* Due to delayed reporting, this figure may underestimate total diagnostic tests and week-on-week changes in diagnostic tests.

DATA SOURCES - Additional data details available under METHODS

Note: Some dates may have incomplete data due to delays in reporting. Data may be backfilled over time, resulting in week-to-week changes.

Cases and Deaths: State values are calculated by aggregating county-level data from USAFacts; therefore, the values may not match those reported directly by the state. Data is through 10/2/2020; last week is 9/26 - 10/2, previous week is 9/19 - 9/25.

Testing: CELR (COVID-19 Electronic Lab Reporting) state health department-reported data through 9/30/2020. Last week is 9/24 - 9/30, previous week is 9/17 - 9/23.

Mobility: Descartes Labs. This data depicts the median distance moved across a collection of mobile devices to estimate the level of human mobility within a county. The 100% represents the baseline mobility level prior to the pandemic; lower percent mobility indicates less population movement. Data is anonymized and provided at the county level. Data through 10/1/2020.

SNFs: Skilled nursing facilities. National Healthcare Safety Network. Data are reported separately for cases among residents and staff. Last week is 9/21-9/27, previous week is 9/14-9/20.



# MISSOURI

STATE REPORT | 10.04.2020

## COVID-19 COUNTY AND METRO ALERTS\*

Top 12 shown in table (full lists below)

### METRO AREA (CBSA) LAST WEEK

### COUNTY LAST WEEK

LOCALITIES  
IN RED  
ZONE

13

Springfield  
Joplin  
Jefferson City  
St. Joseph  
Cape Girardeau  
Lebanon  
West Plains  
Branson  
Fort Leonard Wood  
Poplar Bluff  
Sikeston  
Marshall

51

Greene  
Jasper  
Cape Girardeau  
Buchanan  
Christian  
Franklin  
Cole  
Camden  
Webster  
Laclede  
Howell  
Taney

LOCALITIES  
IN ORANGE  
ZONE

7

Columbia  
Sedalia  
Rolla  
Hannibal  
Mexico  
Kirksville  
Maryville

17

St. Charles  
Jefferson  
Pettis  
Newton  
Phelps  
Marion  
Bollinger  
Andrew  
Audrain  
Grundy  
Clinton  
Pike

LOCALITIES  
IN YELLOW  
ZONE

7

St. Louis  
Kansas City  
Farmington  
Kennett  
Warrensburg  
Quincy  
Fort Madison-Keokuk

17

Jackson  
St. Louis  
Boone  
St. Francois  
Cass  
Polk  
Dunklin  
Clay  
Callaway  
Johnson  
Lincoln  
Platte

**All Red CBSAs:** Springfield, Joplin, Jefferson City, St. Joseph, Cape Girardeau, Lebanon, West Plains, Branson, Fort Leonard Wood, Poplar Bluff, Sikeston, Marshall, Moberly

**All Red Counties:** Greene, Jasper, Cape Girardeau, Buchanan, Christian, Franklin, Cole, Camden, Webster, Laclede, Howell, Taney, Lafayette, Lawrence, Wright, Pulaski, Butler, Morgan, Scott, Stoddard, Miller, Benton, Crawford, Texas, Stone, Perry, Saline, Washington, Cooper, Pemiscot, Randolph, Moniteau, Barry, Wayne, Henry, Douglas, Vernon, Barton, Livingston, Daviess, Osage, Ste. Genevieve, Shannon, Cedar, Oregon, Bates, Caldwell, Mississippi, Lewis, Harrison, Gentry

**All Orange Counties:** St. Charles, Jefferson, Pettis, Newton, Phelps, Marion, Bollinger, Andrew, Audrain, Grundy, Clinton, Pike, DeKalb, Macon, Nodaway, Ozark, Dade

**All Yellow Counties:** Jackson, St. Louis, Boone, St. Francois, Cass, Polk, Dunklin, Clay, Callaway, Johnson, Lincoln, Platte, Warren, New Madrid, Adair, Dallas, Hickory

\* Localities with fewer than 10 cases last week have been excluded from these alerts.

**Note:** Lists of red, orange, and yellow localities are sorted by the number of new cases in the last 3 weeks, from highest to lowest. Some dates may have incomplete data due to delays in reporting. Data may be backfilled over time, resulting in week-to-week changes.

**DATA SOURCES** – Additional data details available under METHODS

**Cases and Deaths:** State values are calculated by aggregating county-level data from USAFacts; therefore, the values may not match those reported directly by the state. Data is through 10/2/2020; last week is 9/26 - 10/2, three weeks is 9/12 - 10/2.

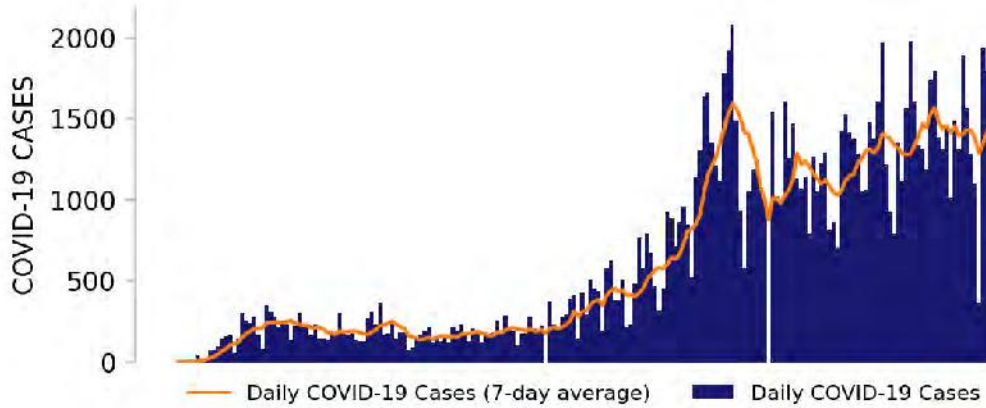
**Testing:** HHS Protect laboratory data (provided directly to Federal Government from public health labs, hospital labs, and commercial labs) through 9/30/2020. Last week is 9/24 - 9/30.



# MISSOURI

STATE REPORT | 10.04.2020

## NEW CASES

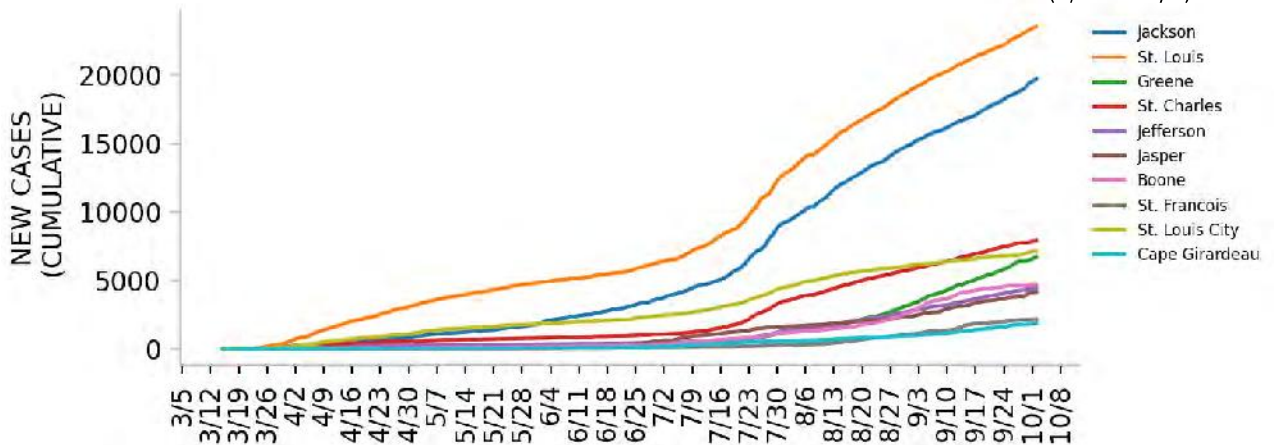


## TESTING



Top counties based on greatest number of new cases in last three weeks (9/12 - 10/2)

## TOP COUNTIES



### DATA SOURCES – Additional data details available under METHODS

**Note:** Some dates may have incomplete data due to delays in reporting. Data may be backfilled over time, resulting in week-to-week changes. **Cases:** State values are calculated by aggregating county-level data from USAFacts; therefore, the values may not match those reported directly by the state. Data is through 10/2/2020.

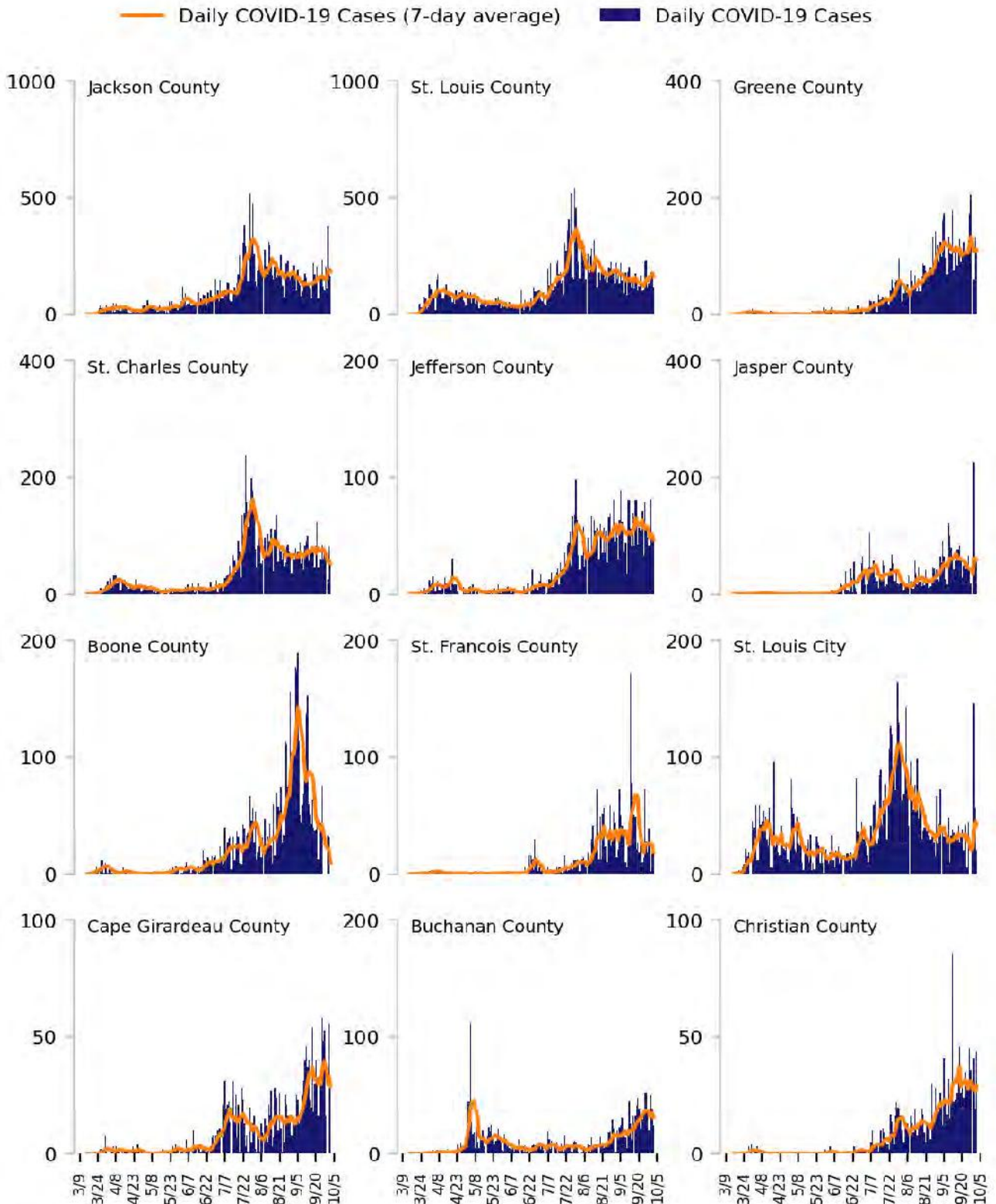
**Testing:** HHS Protect laboratory data (provided directly to Federal Government from public health labs, hospital labs, and commercial labs) through 9/30/2020.





# Top 12 counties based on number of new cases in the last 3 weeks

TOTAL DAILY CASES



DATA SOURCES – Additional data details available under METHODS

Cases: State values are calculated by aggregating county-level data from USAFacts; therefore, the values may not match those reported directly by the state. Data is through 10/2/2020. Last 3 weeks is 9/12 - 10/2.

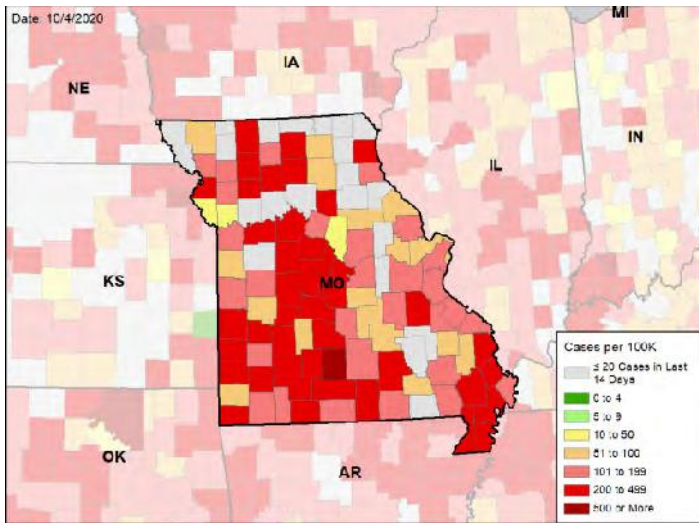


# MISSOURI

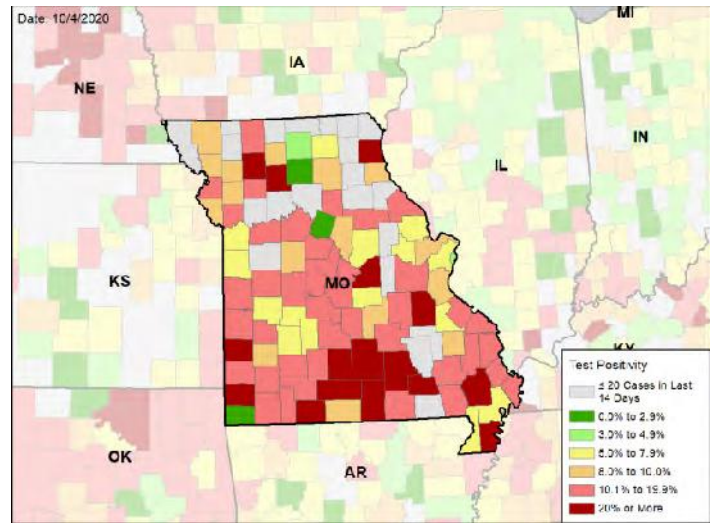
STATE REPORT | 10.04.2020

## CASE RATES AND VIRAL LAB TEST POSITIVITY DURING THE LAST WEEK

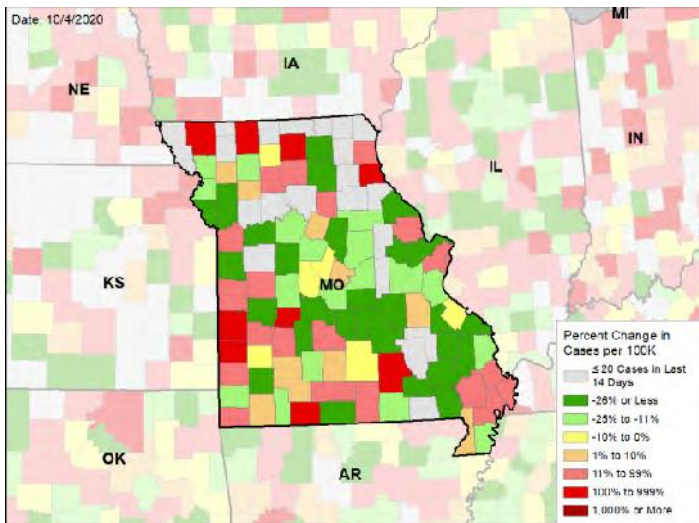
### NEW CASES PER 100,000 DURING THE LAST WEEK



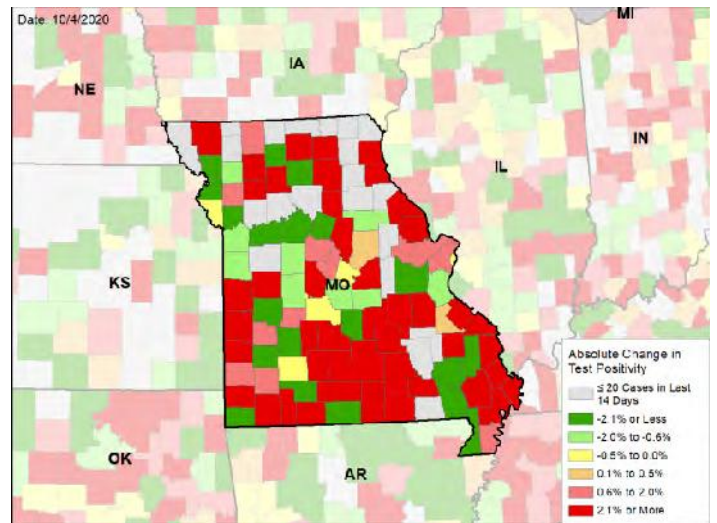
### VIRAL (RT-PCR) LABORATORY TEST POSITIVITY DURING THE LAST WEEK



### WEEKLY CHANGE IN NEW CASES PER 100,000



### WEEKLY CHANGE IN VIRAL (RT-PCR) LABORATORY TEST POSITIVITY



#### DATA SOURCES – Additional data details available under METHODS

**Note:** Some dates may have incomplete data due to delays in reporting. Data may be backfilled over time, resulting in week-to-week changes.

**Cases:** State values are calculated by aggregating county-level data from USAFacts; therefore, the values may not match those reported directly by the state. Data is through 10/2/2020. Last week is 9/26 - 10/2, previous week is 9/19 - 9/25.

**Testing:** HHS Protect laboratory data (provided directly to Federal Government from public health labs, hospital labs, and commercial labs) through 9/30/2020. Last week is 9/24 - 9/30, previous week is 9/17 - 9/23.