



# MISSOURI

## SUMMARY

- Missouri is in the red zone for cases, indicating 101 or more new cases per 100,000 population last week, with the 8th highest rate in the country. Missouri is in the orange zone for test positivity, indicating a rate between 8.0% and 10.0%, with the 8th highest rate in the country.
- Missouri has seen stability in new cases and an increase in test positivity over the last week.
- The following three counties had the highest number of new cases over the last 3 weeks: 1. Jackson County, 2. St. Louis County, and 3. Greene County. These counties represent 27.8% of new cases in Missouri.
- 71% of all counties in Missouri have moderate or high levels of community transmission (yellow, orange, or red zones), with 42% having high levels of community transmission (red zone).
- During the week of Sep 14 - Sep 20, 18% of nursing homes had at least one new resident COVID-19 case, 35% had at least one new staff COVID-19 case, and 5% had at least one new resident COVID-19 death.
- Missouri had 166 new cases per 100,000 population in the last week, compared to a national average of 93 per 100,000.
- Current staff deployed from the federal government as assets to support the state response are: 68 to support operations activities from FEMA; 7 to support operations activities from ASPR; 2 to support epidemiology activities from CDC; 1 to support operations activities from CDC; 25 to support medical activities from VA; and 1 to support operations activities from VA.
- Between Sep 19 - Sep 25, on average, 114 patients with confirmed COVID-19 and 206 patients with suspected COVID-19 were reported as newly admitted each day to hospitals in Missouri. An average of greater than 95% of hospitals reported either new confirmed or new suspected COVID patients each day during this period.

## RECOMMENDATIONS

- Test positivity and case rates have been sustained at the highest levels during the past four weeks, putting Missouri in a vulnerable position going into the fall and winter. Transmission is statewide and new hospital admissions are increasing. Institute mask requirements statewide with reduced capacity for indoor dining and bars while expanding outdoor dining options. Use metrics like West Virginia to determine school learning and extracurricular activity options.
- Rapidly scale up testing to identify individuals with COVID-19 with support for isolation to reduce community transmission. Target testing in areas with persistent high levels of transmission and rapidly increasing incidence from east to northwestern parts of the state.
- Develop age-segmented and geographic relevant messaging to keep Missourians compliant with mitigation efforts, including wearing face masks.
- On the Missouri COVID-19 public dashboard, provide county trends in test positivity and case rates with numerators and denominators so the community can follow local transmission status and adhere to mitigation efforts to decrease spread.
- Decrease introduction of COVID-19 in correctional facilities through on-site inspection of infection control practices in congregate settings.
- Decrease introduction of COVID-19 in nursing homes through on-site inspection of infection control practices at skilled nursing facilities. COVID-19 continues to be introduced in nursing homes through community transmission.
- Abbott BinaxNOW supplies will be distributed in the coming weeks; develop a plan for weekly surveillance in critical populations to monitor the degree of community spread among K-12 teachers; staff working at nursing homes, assisted living, senior living facilities, and other congregate living settings including correctional facilities; and first responders. Tribal Colleges will be receiving testing supplies this week.
- In university settings, use wastewater surveillance on and off campus to identify areas with high viral load for targeted testing. Establish routine testing of student body to find cases early, prevent spread, and keep students on campus. Provide these data to students, faculty, parents, and community on public dashboard.
- Specific, detailed guidance on community mitigation measures can be found on the [CDC website](https://www.cdc.gov).





# MISSOURI

STATE REPORT | 09.27.2020

	STATE, LAST WEEK	STATE, % CHANGE FROM PREVIOUS WEEK	FEMA/HHS REGION, LAST WEEK	UNITED STATES, LAST WEEK
NEW COVID-19 CASES (RATE PER 100,000)	10,178 (166)	-7%	23,969 (170)	305,449 (93)
VIRAL (RT-PCR) LAB TEST POSITIVITY RATE	9.2%	+1.2%*	8.7%	4.3%
TOTAL VIRAL (RT-PCR) LAB TESTS (TESTS PER 100,000)	69,675** (1,135)	-24%**	236,699** (1,674)	6,381,570** (1,944)
COVID-19 DEATHS (RATE PER 100,000)	214 (3.5)	+171%	315 (2.2)	5,143 (1.6)
SNFs WITH ≥1 NEW RESIDENT COVID-19 CASE (≥1 NEW STAFF CASE)	18% (35%)	+2%* (+5%*)	11% (29%)	9% (20%)
SNFs WITH ≥1 NEW RESIDENT COVID-19 DEATH	5%	+0%*	3%	4%



\* Indicates absolute change in percentage points.

\*\* Due to delayed reporting, this figure may underestimate total diagnostic tests and week-on-week changes in diagnostic tests.

**DATA SOURCES** – Additional data details available under METHODS**Note:** Some dates may have incomplete data due to delays in reporting. Data may be backfilled over time, resulting in week-to-week changes.**Cases and Deaths:** State values are calculated by aggregating county-level data from USAFacts; therefore, the values may not match those reported directly by the state. Data is through 9/25/2020; last week is 9/19 - 9/25, previous week is 9/12 - 9/18.**Testing:** CELR (COVID-19 Electronic Lab Reporting) state health department-reported data through 9/23/2020. Last week is 9/17 - 9/23, previous week is 9/10 - 9/16.**Mobility:** Descartes Labs. This data depicts the median distance moved across a collection of mobile devices to estimate the level of human mobility within a county. The 100% represents the baseline mobility level prior to the pandemic; lower percent mobility indicates less population movement. Data is anonymized and provided at the county level. Data through 9/24/2020.**SNFs:** Skilled nursing facilities. National Healthcare Safety Network. Data are reported separately for cases among residents and staff. Last week is 9/14-9/20, previous week is 9/7-9/13.



# MISSOURI

STATE REPORT | 09.27.2020

## COVID-19 COUNTY AND METRO ALERTS\*

Top 12 shown in table (full lists below)

### METRO AREA (CBSA) LAST WEEK

### COUNTY LAST WEEK

LOCALITIES IN RED ZONE	12	Springfield Joplin Jefferson City St. Joseph Warrensburg West Plains Poplar Bluff Lebanon Sedalia Branson Fort Leonard Wood Marshall	48	Greene Jefferson Jasper Christian Cole Franklin Buchanan Johnson Camden Webster Newton Howell
LOCALITIES IN ORANGE ZONE	6	Kansas City Cape Girardeau Kennett Sikeston Mexico Moberly	15	Jackson St. Charles Cape Girardeau Dunklin Polk Scott Platte Crawford Audrain Randolph McDonald Oregon
LOCALITIES IN YELLOW ZONE	7	St. Louis Columbia Farmington Rolla Kirksville Quincy Fort Madison-Keokuk	19	St. Louis Boone St. Francois St. Louis City Cass Clay Callaway Phelps Morgan Warren Barry Adair

**All Red Counties:** Greene, Jefferson, Jasper, Christian, Cole, Franklin, Buchanan, Johnson, Camden, Webster, Newton, Howell, Laclede, Pettis, Taney, Butler, Lafayette, Pulaski, Lawrence, Wright, Miller, Bollinger, Perry, Texas, Stoddard, Cooper, Pemiscot, Benton, Stone, Saline, Washington, Livingston, Wayne, Moniteau, Grundy, Andrew, Dent, Ozark, Daviess, Douglas, Barton, Ripley, Carter, Cedar, Caldwell, St. Clair, Shannon, Dade

**All Orange Counties:** Jackson, St. Charles, Cape Girardeau, Dunklin, Polk, Scott, Platte, Crawford, Audrain, Randolph, McDonald, Oregon, DeKalb, Howard, Lewis

**All Yellow Counties:** St. Louis, Boone, St. Francois, St. Louis City, Cass, Clay, Callaway, Phelps, Morgan, Warren, Barry, Adair, Clinton, Vernon, Ste. Genevieve, Henry, Mississippi, Bates, Maries

\* Localities with fewer than 10 cases last week have been excluded from these alerts.

**Note:** Lists of red, orange, and yellow localities are sorted by the number of new cases in the last 3 weeks, from highest to lowest. Some dates may have incomplete data due to delays in reporting. Data may be backfilled over time, resulting in week-to-week changes.

**DATA SOURCES** – Additional data details available under METHODS

**Cases and Deaths:** State values are calculated by aggregating county-level data from USAFacts; therefore, the values may not match those reported directly by the state. Data is through 9/25/2020; last week is 9/19 - 9/25, three weeks is 9/5 - 9/25.

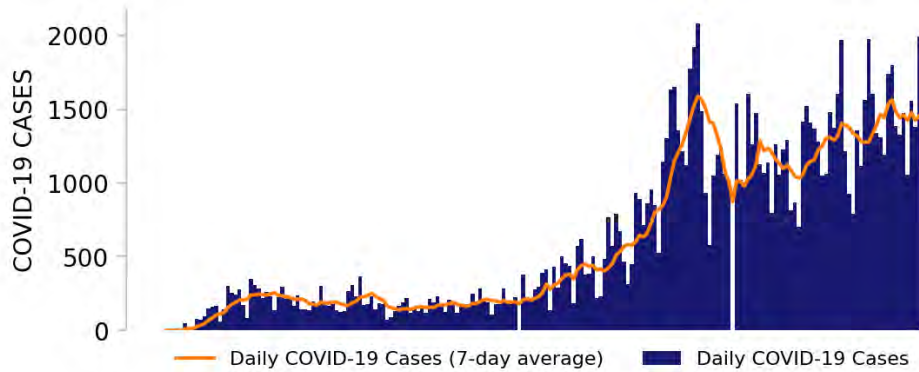
**Testing:** HHS Protect laboratory data (provided directly to Federal Government from public health labs, hospital labs, and commercial labs) through 9/23/2020. Last week is 9/17 - 9/23.



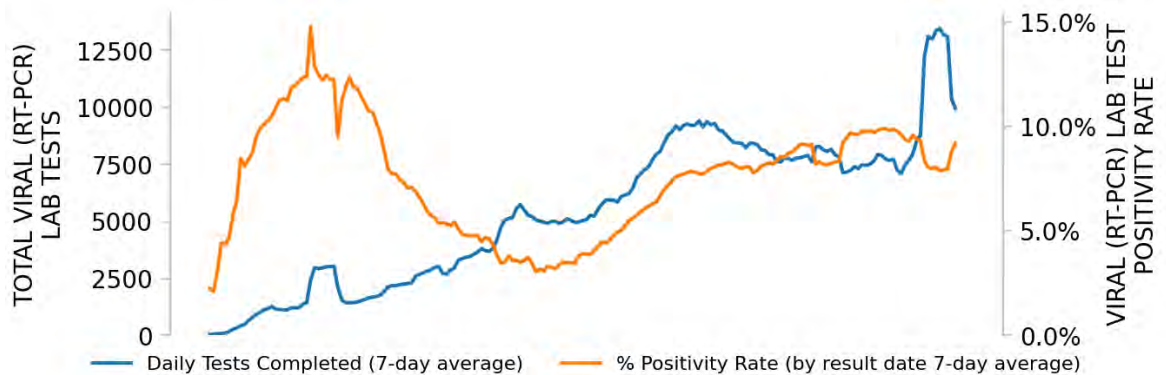
# MISSOURI

STATE REPORT | 09.27.2020

## NEW CASES

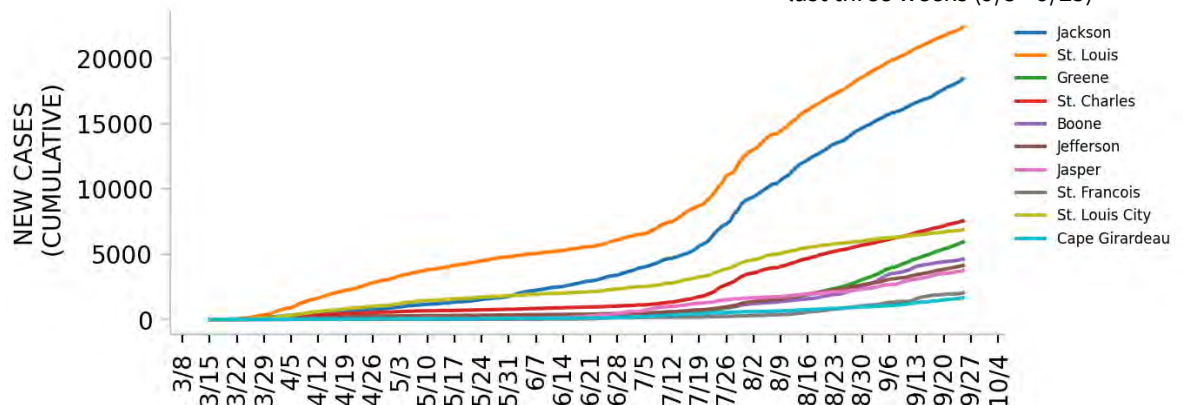


## TESTING



Top counties based on greatest number of new cases in last three weeks (9/5 - 9/25)

## TOP COUNTIES



### DATA SOURCES – Additional data details available under METHODS

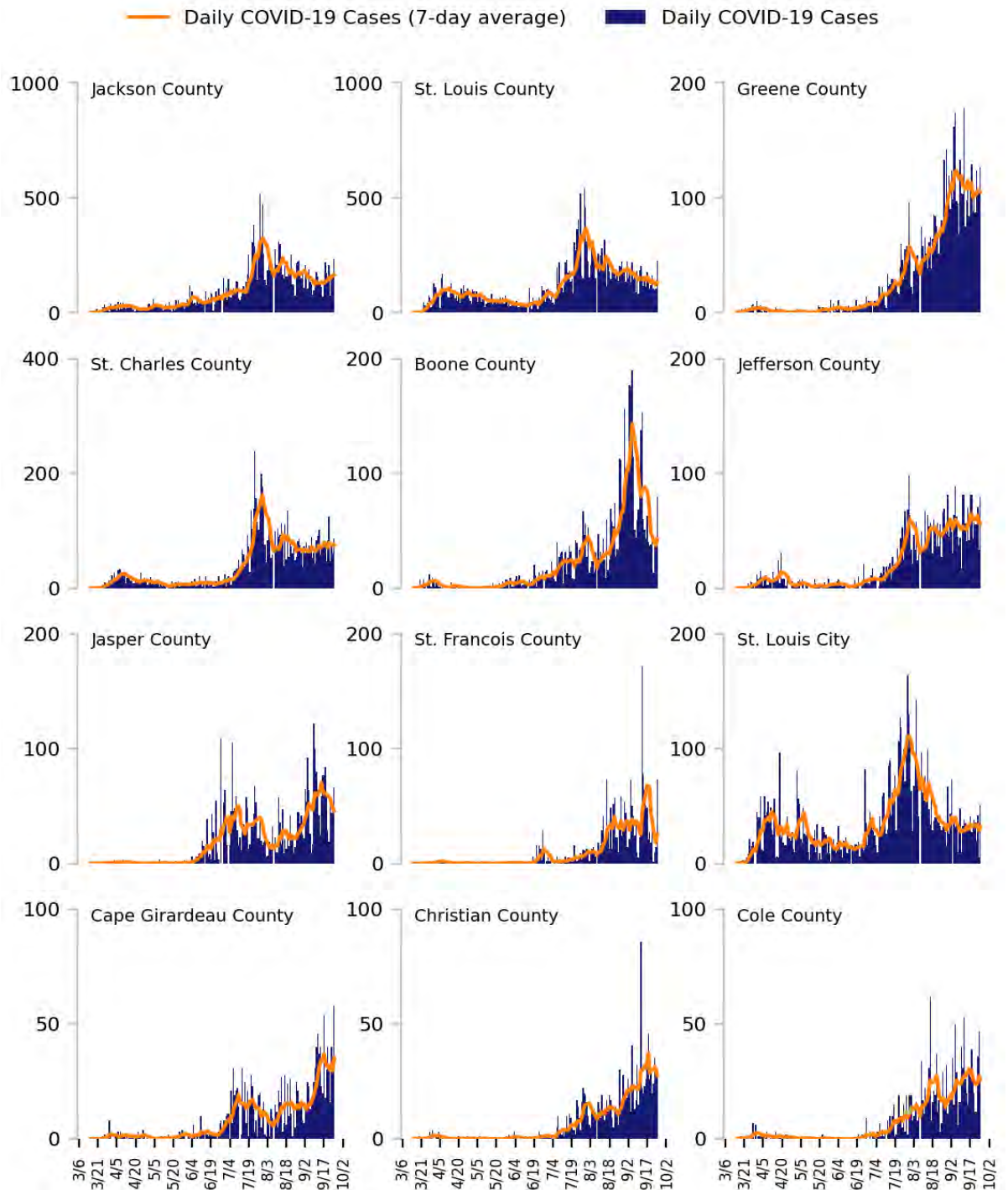
**Note:** Some dates may have incomplete data due to delays in reporting. Data may be backfilled over time, resulting in week-to-week changes.  
**Cases:** State values are calculated by aggregating county-level data from USAFacts; therefore, the values may not match those reported directly by the state. Data is through 9/25/2020.

**Testing:** HHS Protect laboratory data (provided directly to Federal Government from public health labs, hospital labs, and commercial labs) through 9/23/2020.



# Top 12 counties based on number of new cases in the last 3 weeks

TOTAL DAILY CASES



**DATA SOURCES** – Additional data details available under **METHODS**

**Cases:** State values are calculated by aggregating county-level data from USAFacts; therefore, the values may not match those reported directly by the state. Data is through 9/25/2020. Last 3 weeks is 9/5 - 9/25.



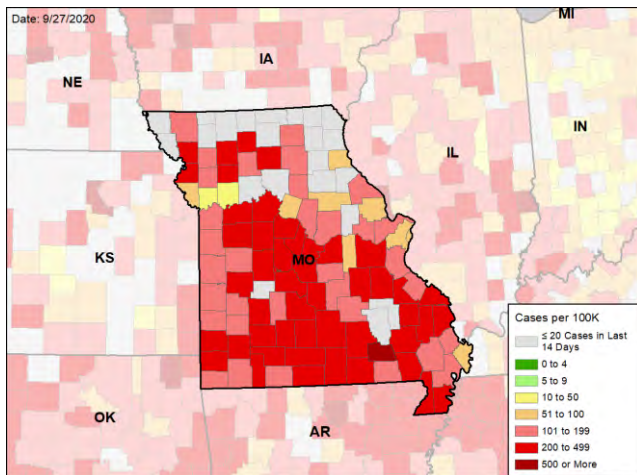


# MISSOURI

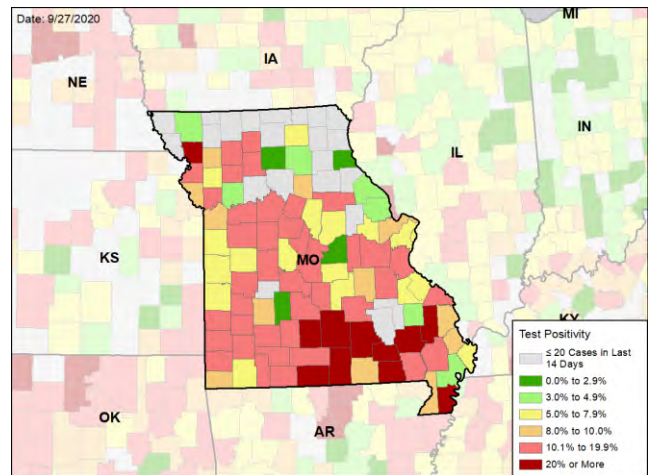
STATE REPORT | 09.27.2020

## CASE RATES AND VIRAL LAB TEST POSITIVITY DURING THE LAST WEEK

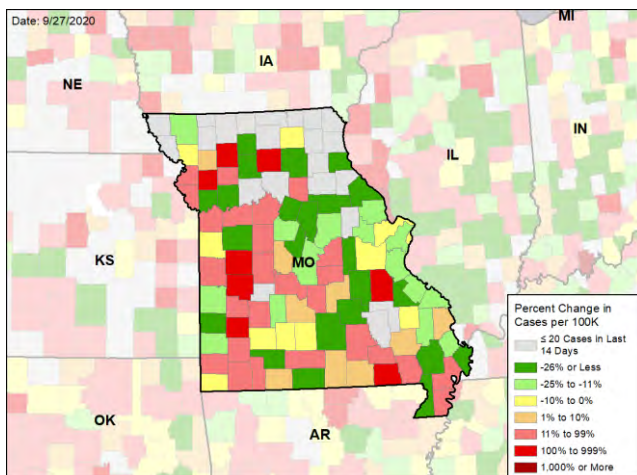
### NEW CASES PER 100,000 DURING THE LAST WEEK



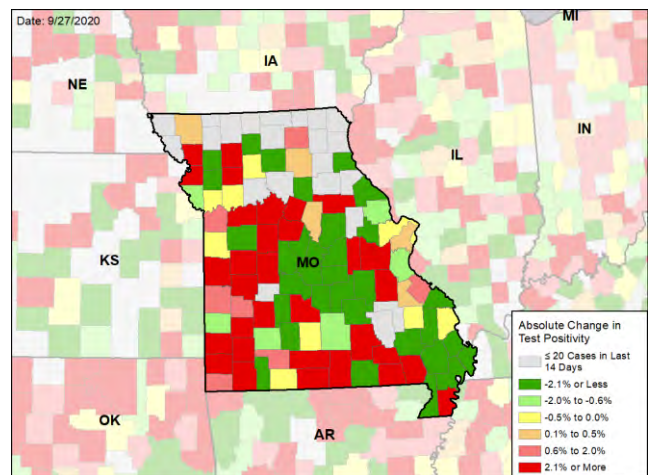
### VIRAL (RT-PCR) LABORATORY TEST POSITIVITY DURING THE LAST WEEK



### WEEKLY CHANGE IN NEW CASES PER 100,000



### WEEKLY CHANGE IN VIRAL (RT-PCR) LABORATORY TEST POSITIVITY



**DATA SOURCES** – Additional data details available under METHODS

**Note:** Some dates may have incomplete data due to delays in reporting. Data may be backfilled over time, resulting in week-to-week changes. **Cases:** State values are calculated by aggregating county-level data from USAFacts; therefore, the values may not match those reported directly by the state. Data is through 9/25/2020. Last week is 9/19 - 9/25, previous week is 9/12 - 9/18.

**Testing:** HHS Protect laboratory data (provided directly to Federal Government from public health labs, hospital labs, and commercial labs) through 9/23/2020. Last week is 9/17 - 9/23, previous week is 9/10 - 9/16.