



MISSOURI

SUMMARY

- Missouri is in the red zone for cases, indicating 101 or more new cases per 100,000 population last week, with the 5th highest rate in the country. Missouri is in the orange zone for test positivity, indicating a rate between 8.0% and 10.0%, with the 10th highest rate in the country.
- Missouri has seen an increase in new cases and a decrease in test positivity over the last week.
- The following three counties had the highest number of new cases over the last 3 weeks: 1. St. Louis County, 2. Jackson County, and 3. Greene County. These counties represent 29.7% of new cases in Missouri.
- 74% of all counties in Missouri have moderate or high levels of community transmission (yellow, orange, or red zones), with 45% having high levels of community transmission (red zone). Spread is across rural and urban settings.
- During the week of Sep 7 - Sep 13, 15% of nursing homes had at least one new resident COVID-19 case, 28% had at least one new staff COVID-19 case, and 5% had at least one new resident COVID-19 death.
- Missouri had 179 new cases per 100,000 population in the last week, compared to a national average of 86 per 100,000.
- Current staff deployed from the federal government as assets to support the state response are: 66 to support operations activities from FEMA; 7 to support operations activities from ASPR; 2 to support epidemiology activities from CDC; 2 to support operations activities from CDC; 12 to support medical activities from VA; and 1 to support operations activities from VA.
- Between Sep 12 - Sep 18, on average, 107 patients with confirmed COVID-19 and 224 patients with suspected COVID-19 were reported as newly admitted each day to hospitals in Missouri. An average of greater than 95% of hospitals reported either new confirmed or new suspected COVID patients each day during this period.

RECOMMENDATIONS

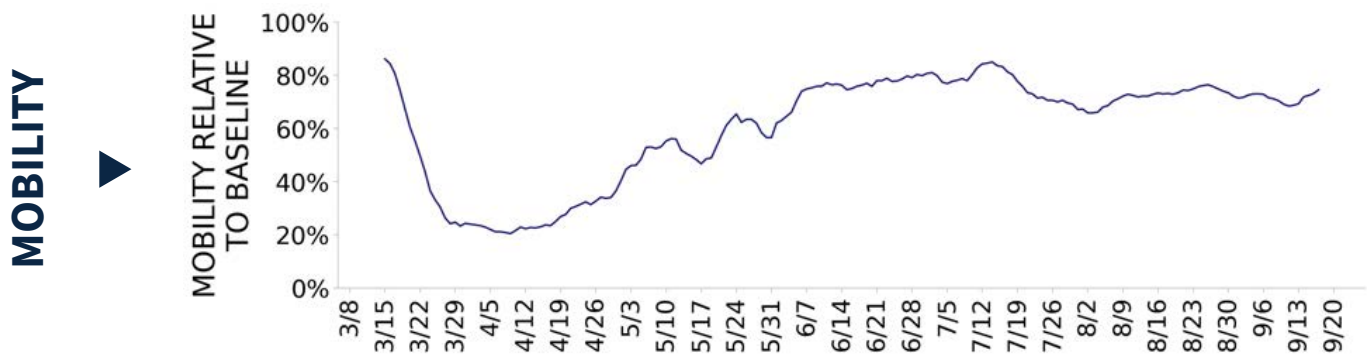
- Ensuring mask utilization statewide will prevent unnecessary transmission and deaths in vulnerable communities.
- Maintain community testing at July levels in order to effectively identify cases and rapidly intervene as transmission patterns continue to change.
- Conduct rigorous case investigation and rapid contact tracing with early isolation of known or suspected cases and quarantine of all contacts. Maintain a particular focus in cities or counties with elevated or increasing transmission and tourist areas. Use results from contact tracing to message to the community about current transmission trends and how citizens can protect themselves.
- Track antigen positive results with PCR confirmed results to determine totality of community spread in local areas.
- In areas with ongoing high levels of transmission (red and orange zones), use standard metrics to determine school learning options and capacity for bars and indoor dining. Expand outdoor dining options.
- Dramatically increase testing at universities to quickly find and quarantine on-campus cases and prevent spread in surrounding community. Use positive incentives to encourage testing among students. Implement wastewater surveillance in order to identify and respond to changes in transmission levels. Do not reassign cases that test positive in university settings to hometown as this lessens ability to track and control local spread.
- Major universities are transparently tracking COVID cases, such as the University of Arizona (<https://covid19.arizona.edu/dashboard>). Ensure this is happening at universities in Missouri.
- Ensure the protection of those in nursing homes, assisted living, and long-term care facilities (LTCFs) by ensuring access to rapid facility-wide testing in response to a resident or staff member with COVID-19; isolate all positive staff and residents. Ensure social distancing and universal facemask use. Immediately conduct infection control surveys in all nursing homes with initial cases or 3 or more cases in the last week. Antigen testing supplies will continue to be provided by the federal government over the next 4-6 weeks to support LTCF testing.
- Specific, detailed guidance on community mitigation measures can be found on the [CDC website](#).



MISSOURI

STATE REPORT | 09.20.2020

	STATE, LAST WEEK	STATE, % CHANGE FROM PREVIOUS WEEK	FEMA/HHS REGION, LAST WEEK	UNITED STATES, LAST WEEK
NEW COVID-19 CASES (RATE PER 100,000)	10,962 (179)	+23%	22,785 (161)	283,590 (86)
VIRAL (RT-PCR) LAB TEST POSITIVITY RATE	8.0%	-1.6%*	8.1%	4.4%
TOTAL VIRAL (RT-PCR) LAB TESTS (TESTS PER 100,000)	89,250** (1,454)	+80%**	218,207** (1,543)	5,881,734** (1,792)
COVID-19 DEATHS (RATE PER 100,000)	79 (1.3)	-44%	222 (1.6)	5,580 (1.7)
SNFs WITH ≥1 NEW RESIDENT COVID-19 CASE (≥1 NEW STAFF CASE)	15% (28%)	+3%* (+5%*)	10% (25%)	9% (19%)
SNFs WITH ≥1 NEW RESIDENT COVID-19 DEATH	5%	+0%*	3%	4%



* Indicates absolute change in percentage points.

** Due to delayed reporting, this figure may underestimate total diagnostic tests and week-on-week changes in diagnostic tests.

DATA SOURCES – Additional data details available under METHODS

Note: Some dates may have incomplete data due to delays in reporting. Data may be backfilled over time, resulting in week-to-week changes.

Cases and Deaths: State values are calculated by aggregating county-level data from USAFacts; therefore, the values may not match those reported directly by the state. Data is through 9/18/2020; last week is 9/12 - 9/18, previous week is 9/5 - 9/11.

Testing: CELR (COVID-19 Electronic Lab Reporting) state health department-reported data through 9/16/2020. Last week is 9/10 - 9/16, previous week is 9/3 - 9/9.

Mobility: Descartes Labs. This data depicts the median distance moved across a collection of mobile devices to estimate the level of human mobility within a county. The 100% represents the baseline mobility level prior to the pandemic; lower percent mobility indicates less population movement. Data is

MISSOURI

STATE REPORT | 09.20.2020

COVID-19 COUNTY AND METRO ALERTS*

Top 12 shown in table (full lists below)

METRO AREA (CBSA) LAST WEEK

COUNTY LAST WEEK

LOCALITIES IN RED ZONE

14

Springfield
Joplin
Jefferson City
Cape Girardeau
St. Joseph
Warrensburg
West Plains
Kennett
Poplar Bluff
Sikeston
Branson
Rolla

52

Greene
Jefferson
Jasper
Christian
Cole
Franklin
Buchanan
Johnson
Livingston
Webster
Camden
Callaway

LOCALITIES IN ORANGE ZONE

3

Kansas City
Lebanon
Marshall

16

St. Charles
Cape Girardeau
Clay
Laclede
Marion
Platte
Saline
Washington
Gasconade
Clinton
Howard
Ripley

LOCALITIES IN YELLOW ZONE

7

St. Louis
Columbia
Farmington
Hannibal
Sedalia
Mexico
Fort Madison-Keokuk

17

St. Louis
Jackson
Boone
St. Francois
St. Louis City
Cass
Pettis
Polk
Lincoln
Cooper
Audrain
Morgan

All Red CBSAs: Springfield, Joplin, Jefferson City, Cape Girardeau, St. Joseph, Warrensburg, West Plains, Kennett, Poplar Bluff, Sikeston, Branson, Rolla, Fort Leonard Wood, Moberly

All Red Counties: Greene, Jefferson, Jasper, Christian, Cole, Franklin, Buchanan, Johnson, Livingston, Webster, Camden, Callaway, Howell, Newton, Dunklin, Scott, Taney, Perry, Phelps, Miller, Bollinger, Texas, Butler, Crawford, Pulaski, Lawrence, Lafayette, Stoddard, Pemiscot, New Madrid, Wright, Grundy, Stone, Warren, Randolph, Moniteau, Wayne, Ozark, Andrew, Dent, Benton, Barton, Mississippi, Daviess, Douglas, DeKalb, Osage, Oregon, Carter, Caldwell, Maries, Shannon

All Orange Counties: St. Charles, Cape Girardeau, Clay, Laclede, Marion, Platte, Saline, Washington, Gasconade, Clinton, Howard, Ripley, Cedar, Hickory, Montgomery, Linn

All Yellow Counties: St. Louis, Jackson, Boone, St. Francois, St. Louis City, Cass, Pettis, Polk, Lincoln, Cooper, Audrain, Morgan, Pike, Ste. Genevieve, Vernon, McDonald, Carroll

* Localities with fewer than 10 cases last week have been excluded from these alerts.

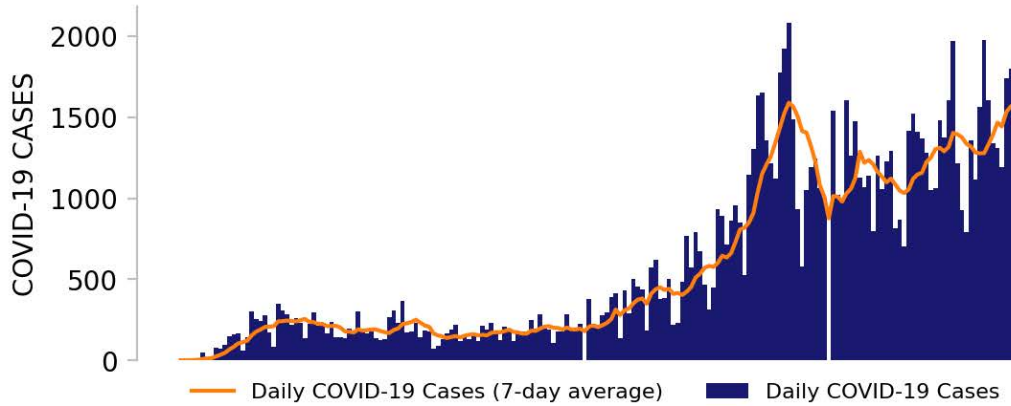
Note: Lists of red, orange, and yellow localities are sorted by the number of new cases in the last 3 weeks, from highest to lowest. Some dates may have incomplete data due to delays in reporting. Data may be backfilled over time, resulting in week-to-week changes.

DATA SOURCES – Additional data details available under METHODS

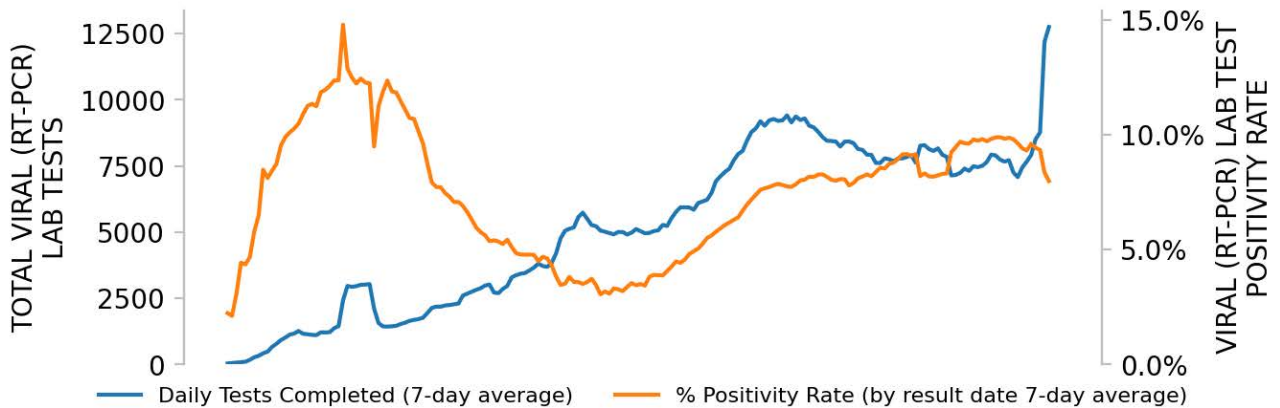
MISSOURI

STATE REPORT | 09.20.2020

NEW CASES

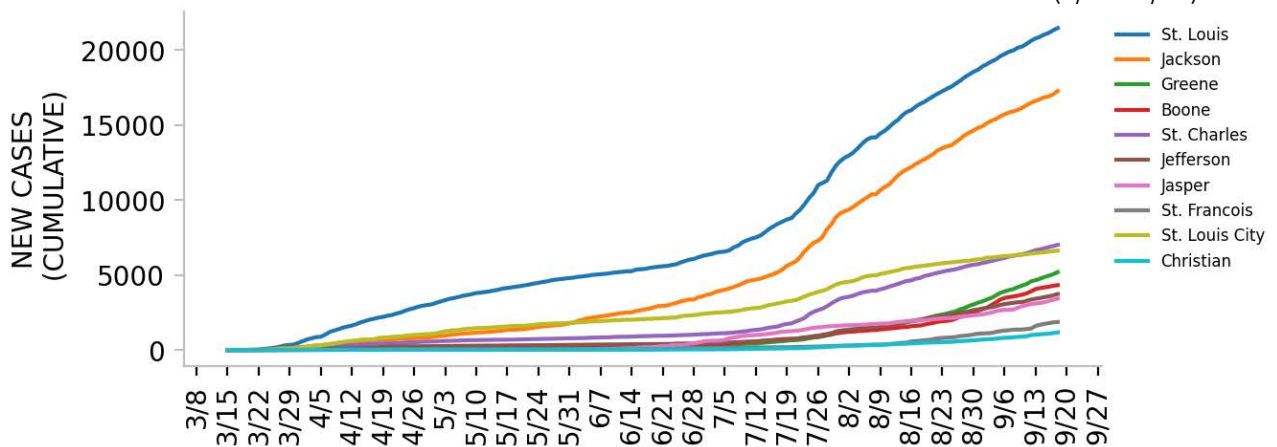


TESTING



Top counties based on greatest number of new cases in last three weeks (8/29 - 9/18)

TOP COUNTIES



DATA SOURCES – Additional data details available under METHODS

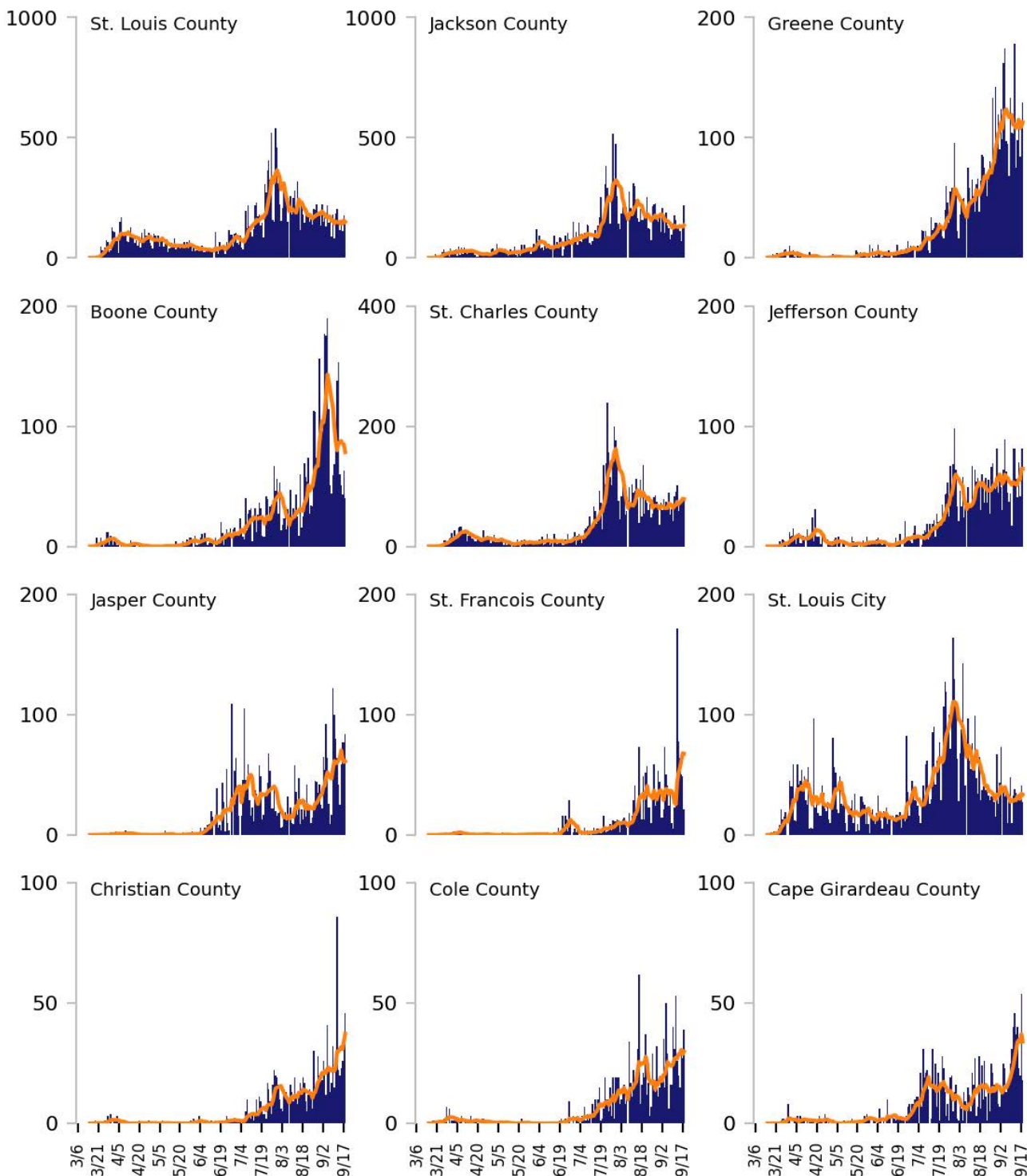
Note: Some dates may have incomplete data due to delays in reporting. Data may be backfilled over time, resulting in week-to-week changes.

Cases: State values are calculated by aggregating county-level data from USAFacts; therefore, the values may not match those reported

Top 12 counties based on number of new cases in the last 3 weeks

— Daily COVID-19 Cases (7-day average) ■ Daily COVID-19 Cases

TOTAL DAILY CASES

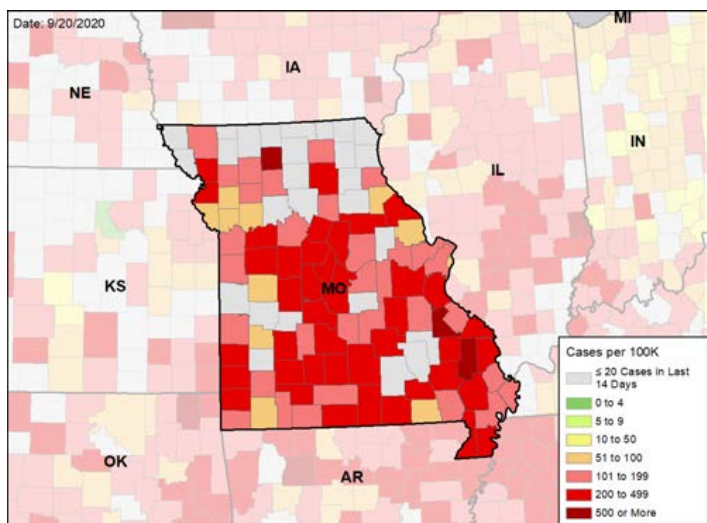


MISSOURI

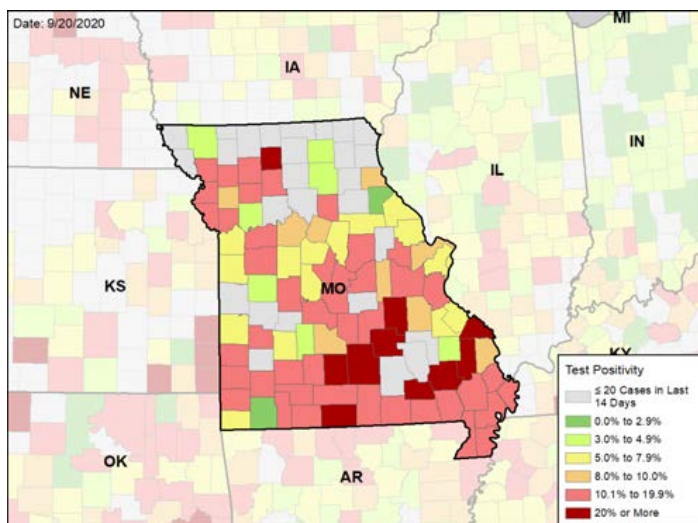
STATE REPORT | 09.20.2020

CASE RATES AND VIRAL LAB TEST POSITIVITY DURING THE LAST WEEK

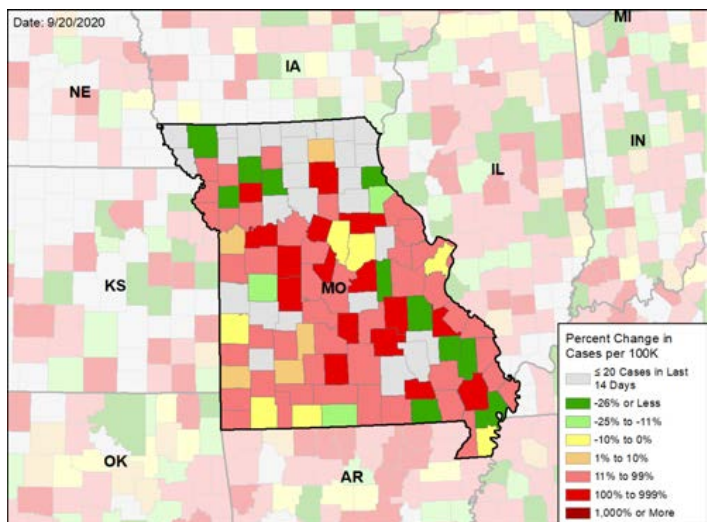
NEW CASES PER 100,000 DURING THE LAST WEEK



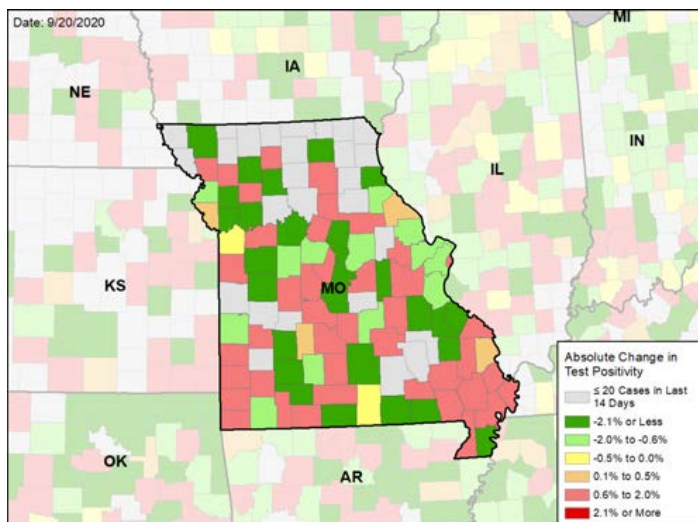
VIRAL (RT-PCR) LABORATORY TEST POSITIVITY DURING THE LAST WEEK



WEEKLY CHANGE IN NEW CASES PER 100,000



WEEKLY CHANGE IN VIRAL (RT-PCR) LABORATORY TEST POSITIVITY



DATA SOURCES – Additional data details available under METHODS

Note: Some dates may have incomplete data due to delays in reporting. Data may be backfilled over time, resulting in week-to-week changes.

Cases: State values are calculated by aggregating county-level data from USAFacts; therefore, the values may not match those reported