



SCHOOL OF THE OSAGE
Home of the Indians



FALL 2020

RE-ENTRY PLAN

SCHOOL OF THE OSAGE

IN PARTNERSHIP WITH OUR
students, families, and community.

WILL EQUIP ALL LEARNERS

TO MEET THEIR MAXIMUM POTENTIAL

FOR *a lifetime of success.*

LETTER FROM THE SUPERINTENDENT

Dear School of the Osage Students, Families, and Community-

Each year, our district has a theme. Past years have focused on hope, strength, gratitude and success. Prior to the COVID-19 pandemic, we landed on Opportunity- one of our four core values.

Needless to say, much has changed since January. We've continually discussed changing the theme to something more in keeping with the grit of the times. Perseverance, focus, courage, flexibility, resilience, and even adventure have all been considered. But as conditions around the community, the state, and the country continue to evolve, it has become increasingly evident that providing opportunities for our students has never been more important. Thriving in the face of disruption has been the driver behind every re-entry meeting since the beginning of May.

In these meetings, it has been a consistent priority for us to do whatever possible to safely re-open schools and minimize the risk of exposure to COVID-19 for students and staff while seeking to provide maximum learning opportunities for students. Due to the fluid nature of the pandemic, it is difficult to envision every possibility. However, we have done our due diligence to ensure school continuity. This preparation has included, but has not been limited to the following:

- Collaborating with local health directors
- Collaborating with Osage Family Partnership (OFP) leadership
- Communicating with the community
- Identifying important issues related to safe classroom learning
- Preparing and enhancing technology to support K-12 blended learning model
- Reviewing and refining the Osage plan for educational continuity
- Updating and refining staff training materials and processes
- Revising transportation protocols
- Assessing food service model
- Discussing equity needs
- Facilitating and maintaining critical sanitizing needs



LETTER FROM THE SUPERINTENDENT

As you would expect, the plan we are presenting today (Monday, July 27, 2020) reflects the public health situation as it currently stands in our community. With almost a month until the first scheduled day of school on Tuesday, August 25th, we must all prepare ourselves for potential changes to the situation. Be assured we will continue to monitor, adjust, and communicate with you.

We are confident that our plan facilitates our two most important goals:

- The safety of students and staff
- The learning and growth of students, regardless of disruption

Thank you for standing united with us as we move forward into this unprecedented time.

Sincerely,

Dr. Laura Nelson

Superintendent

School of the Osage Core Values

Strength. Opportunity. Innovation. Tradition.



KEY PRIORITIES

As we return for the 2020-2021 school year, the School of the Osage District will work to minimize the risk of exposure to COVID-19 for students and staff. However, we must all acknowledge that returning to in-seat education will introduce a greater risk of exposure in spite of our best efforts.

The following key priorities have been identified for implementation across the district in order to allow for the return to in-seat education this fall.

- Increased Sanitation Efforts (Pages 4-5)
- Social Distancing (Pages 6-7)
- Staff & Student Screening Measures (Pages 8-9)
- Personal Protective Equipment (Pages 10-11)
- Limited Visitor Access to Buildings (Page 12)
- Educational Format Options (Pages 13-16)
- Procedures for COVID-19 Infections (Pages 17-18)
- Resources (Page 19)



INCREASED SANITATION

- School of the Osage Custodial Team members will undergo a thorough disinfectant and sanitation training. This includes discussion of proper product use by a chemical engineer and a review of CDC and State of Missouri health department cleaning expectations for during school and after hours.
- During school hours, custodians will thoroughly clean high touch surfaces throughout the building including bathrooms, water bottle fill stations, doorknobs, entrance/exit handles, handrails, walls, etc.
- On Distance Learning Mondays, the custodial team will do additional deep cleaning throughout the district.

Keeping your child and family safe at home: Tips to help control the spread of illness



Wash hands with soap and water for at least 20 seconds. Use alcohol-based hand sanitizer if soap and water are unavailable.



Avoid touching your face with unwashed hands.



Cough or sneeze into your elbow or tissue. Throw the tissue in the trash. Wash hands or use hand sanitizer.



Avoid contact with people who are sick and stay home if you are sick.



Clean and disinfect frequently touched objects and surfaces.



INCREASED SANITATION

- Classrooms and other common spaces will be cleaned and disinfected.
- Cleaning materials and hand sanitizers will be placed in every classroom. Staff and students will be expected to support cleaning and disinfecting of classroom surfaces and supplies as needed.
- Handwashing stations with soap and/or hand sanitizer will be available in classrooms, commonly used areas, and at the entrances and exits of all buildings.
- Students and staff will have scheduled times throughout the day to wash/sanitize hands and supplies.
- Drinking fountains will be turned off, but refillable water bottle stations can be used for individual drinking containers.
- Bus drivers will undergo sanitation training, and all school buses will be thoroughly sanitized before and after each route.



SONGS FOR A 20-SECOND SCRUB

Song: "Happy Birthday"

"Happy birthday to you, Happy birthday to you,
Happy birthday dear (insert name)
Happy birthday to you"

(Sing twice)

Chorus: "Let It Go" from Frozen

"Let it go, let it go
Can't hold it back anymore
Let it go, let it go
Turn away and slam the door!
I don't care what they're going to say
Let the storm rage on
The cold never bothered me anyway!"

Chorus: "Just the Way You Are"

by Bruno Mars
"When I see your face
There's not a thing that I would change
'cause you're amazing
Just the way you are
And when you smile
The whole world stops and stares for a while
'Cause you're amazing
Just the way you are"



SOCIAL DISTANCING

School of the Osage Schools will strive to create an environment that supports health guidelines without interrupting the education of our students.

- The goal is to limit exposure to as few other students and staff members as possible. Staff and students must do their very best to maintain as much distance as possible from others within school buildings.
- Seating charts will be required in classrooms and on the bus to limit exposure and for contact tracing purposes in conjunction with local health departments if needed.
- Students will go immediately to designated locations upon arriving at school and will not unnecessarily congregate in hallways or common areas.
- In order to prevent students from congregating in hallways or common areas, buildings will likely only open 30 minutes before start times to ensure students can be supervised as needed. Special arrangements for access into buildings outside of regular school hours (such as tutoring or extra/co-curricular activities) will be arranged by staff members and supervised accordingly.
- Modifications to meals will be made as needed (for example, some students may eat meals in the classroom, some students may eat meals in other common areas to limit the number of students in the cafeteria). If eating meals in the cafeteria, the number of students will be limited and students will be seated with fellow students from their small groups to minimize exposure.
- Modifications within the school day will be made as needed (for example, elementary teachers for classes like art or music will come to primary classrooms to limit the amount of movement within buildings, recess times will be staggered, etc).
- Desks in classrooms will be spaced as far apart as possible to allow for social distancing.



SOCIAL DISTANCING

- In-school gatherings such as assemblies, rallies, school parties, dances etc. will not be scheduled at this time.
- Academics are considered a non-voluntary component of a student's education while co-curricular activity participation is voluntary. This approach will drive our planning and preparation for extra/co-curricular guidance when released.
- Additional details and guidelines regarding extra/co-curricular activities and competition will be governed by Missouri State High School Activities Association (MSHSAA) bylaws and recommendations released July 15, 2020 and contingent upon all subsequent updates.
- Parents who can safely transport their students to/from school are encouraged to do so to help minimize the number of students riding the bus and allow for minimized contact.
- Modifications to bus loading and unloading procedures will be made, hand sanitizer will be available to students for boarding and unloading from the bus, and students will be assigned seats to limit exposure. Students are not allowed to switch buses.



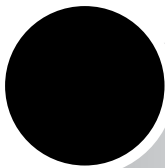
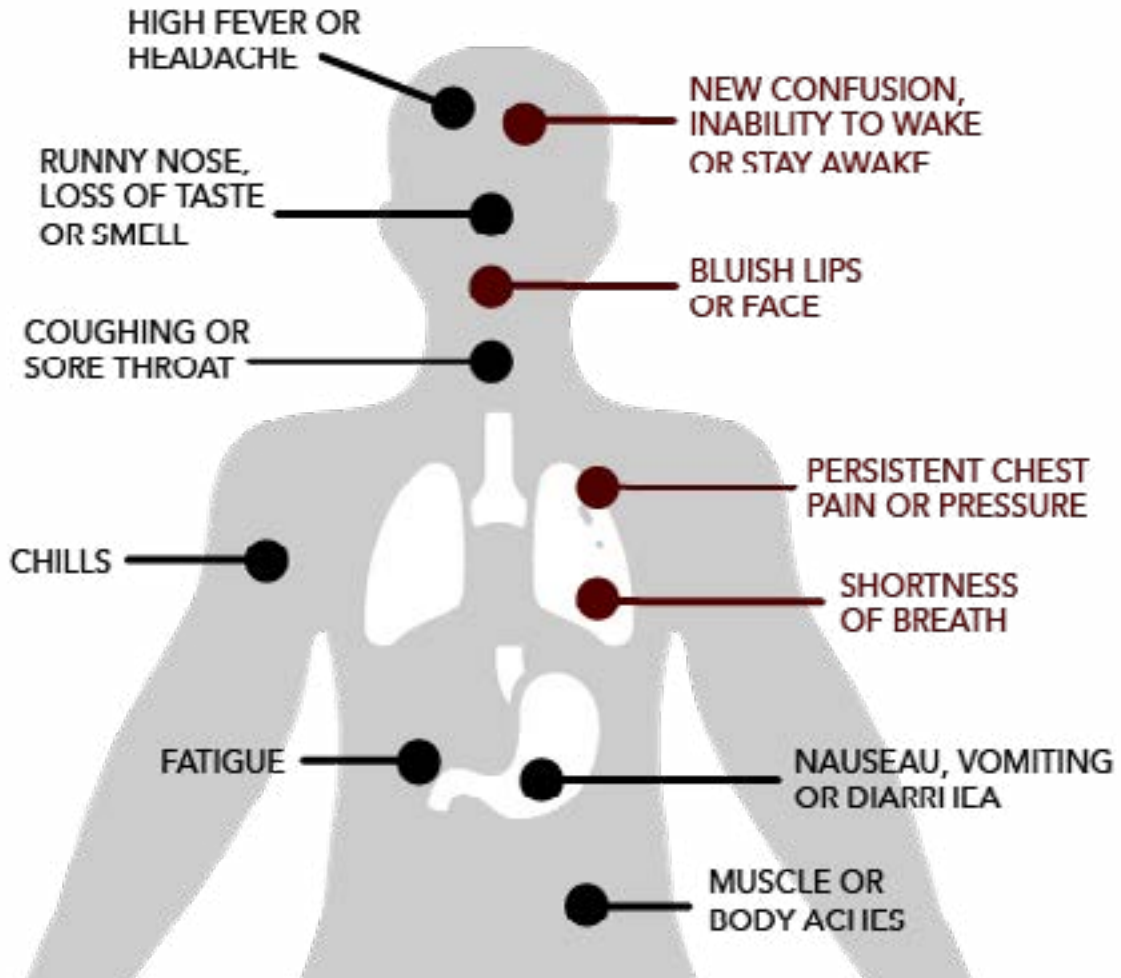
STAFF & STUDENT SCREENING MEASURES

- Students and adults who have come into close contact with someone who tests positive for COVID-19 should closely monitor for any COVID-19 symptoms and should follow all instructions given by the local health department related to contact tracing.
- When students are kept home due to illness, the school attendance secretary will ask additional screening and entry questions regarding symptoms to confirm whether COVID-19 is a factor.
- Perfect attendance will not be incentivized by buildings as our preference is for anyone who is sick to stay home. Learning opportunities will be provided for all students who stay home due to illness.
- Thermal cameras will be installed at the entrance of every building to scan all who enter for elevated temperatures. Anyone experiencing a temperature at/above 100.4 will immediately be moved to a designated isolation room within the school building to minimize any further contact with others until they are able to go home. Where appropriate, handheld thermal temperature readers will also be used.
- Students and staff who are sent home with a temperature must be fever free for 24 hours without the use of fever reducing medications and may return to school if accompanied by a doctor's note with a diagnosis not related to a respiratory illness, influenza or COVID-19 (such as pink eye, strep throat, ear infection, etc.).
- Students and staff must be fever free for 72 hours without the use of fever reducing medications if not accompanied by a doctor's note for a diagnosis. Fever reducing medications include Tylenol, Acetaminophen, Motrin, Ibuprofen etc.

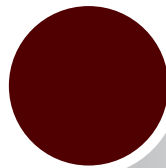


STAFF & STUDENT SCREENING MEASURES

Students and staff who experience symptoms related to COVID-19 should not come to school. COVID-19 symptoms include the following:



Symptoms may appear 2-14 days after exposure to the virus. People with these symptoms may have COVID-19.



Emergency warning signs for COVID-19. If you or someone you know is showing any of these signs, seek emergency medical care immediately.



PERSONAL PROTECTIVE EQUIPMENT

Social distancing will be encouraged throughout the school day. Students and staff are expected to avoid close interactions and minimize exposure to every extent possible.



- Parents should discuss the importance of social distancing with their students prior to the start of school. It will be difficult to ensure students maintain distance, but it is necessary for staff and students to understand the importance of doing so to prevent exposure.
- Parents of PK students are strongly encouraged to wear a mask while loading and unloading their child on the bus.
- Students in grades 6-12 will be strongly encouraged to wear a mask or face covering in any instance where social distance cannot be maintained (such as passing periods in the hallways, lunch lines, etc).
- Students in grades PK-12 will be strongly encouraged to wear a mask while riding the bus.
- Staff members will be required to be in possession of a mask or face covering and will be required to have it on in any instance where social distance cannot be maintained.



PERSONAL PROTECTIVE EQUIPMENT

- Due to possible medical related concerns, we understand that not all staff and students will be able to wear masks for long periods of time. Exceptions can be evaluated with building administrators and school nursing staff.
- The use of masks or face coverings will not be prohibited in any instances throughout the school day where a student or staff member chooses to wear them.
- Existing student and staff dress codes will apply to face coverings that are worn. It is possible that, if local conditions warrant it, School of the Osage Schools will consider implementing stricter requirements related to face coverings.
- View CDC guidance and recommendations on face coverings www.cdc.org.



LIMITED VISITOR ACCESS TO BUILDINGS

- In order to minimize the exposure of all students and staff to others outside of their assigned small groups, non-essential visitors and parents will not be permitted beyond the main office at school buildings. Due to these restrictions, traditional Open House events will not be held at schools this fall.
- Any visitors/parents who enter the building will be required to enter through the main entrance, required to wear a mask while in the building, scanned by the thermal temperature cameras, and will be tracked in a visitor log to include symptom screening questions, date and time of visit, where in the building they travel to, and which, if any, students or staff they have contact with.
- These restrictions will apply during the school day but may differ somewhat for evening activities, which are optional to attend, in times when students are not on campus.

ESSENTIAL VISITOR SCREENING QUESTIONS

Have you been experiencing any of the COVID-19 symptoms?

What is the date and time of your visit?

Where in the building are you traveling to?

Which of the students and/or staff in the building did you have contact with?



EDUCATIONAL FORMAT OPTIONS

- With an understanding of the possible impact the pandemic can have on our community, the District believes that the best approach for the start of the 2020-2021 school year is a flexible approach.
- Families will be offered the choice between two options for each K -12 student:
Option 1: Osage blended (4 days in school/1 day distance learning)
Option 2: Full Virtual through Launch
- The Early Childhood Center will operate Tuesday- Friday. Distance learning will not be utilized on Mondays.
- Families will have until August 13 to elect a school format choice.
- Individual students within families can elect different formats.



EDUCATIONAL FORMAT OPTIONS

Option 1- Blended Learning (Four days seated/one day distance instruction)

For the 20-21 school year, School of the Osage has adopted a blended learning model which includes 4 “traditional/seated” school days, Tuesday-Friday and one distance learning day on Mondays. Additionally, we have developed plans for days when a classroom, a school, or the entire district would need to be closed due to COVID-19 concerns or other disruption, including weather. After meeting with the community health directors who oversee Camden, Miller, and Morgan counties, we believe we can expect that all three counties will utilize contact tracing and individual quarantining whenever possible in lieu of wider closures. What this means is that groups of students and staff may be sent home for various durations of time (for instance, from 72 hours up to potentially 24 days). The School of the Osage is committed to providing consistency in the face of such potential on-going disruption via the use of our blended learning model. Students and staff who are quarantined will be able to access instruction utilizing the methods and resources put into place and practiced on distance learning Mondays.

A FEW IMPORTANT COMMITMENTS SUPPORTING THIS MODEL ARE AS FOLLOWS.

- We will use the Canvas Learning Management system as our learning platform in all classrooms, K-12, every day of the week, regardless of location (at school, home, or elsewhere).
- Resources and materials will be in one location (Canvas), so they are easier for students and families to find.
- All courses will utilize the same design, making it easier for students and families to navigate and use effectively.
- Parents will receive information and instructions in August for how to use Canvas. Information will also be archived for on-going access.
- We will address unfinished learning with a focus on grade-level content for all students and will administer targeted assessments at the beginning of the school year to guide our teaching.
- Childcare will be available by reservation at Heritage Elementary for students in grades K-5 from 7:45 am to 2:00 pm on scheduled distance learning Mondays. (Please refer to appendix B for scenario 1/reentry option 1. It is important to note that childcare for scenarios 2-4 will be contingent on local health conditions. Childcare is not available for students enrolled in scenario 5/reentry option 2.)



EDUCATIONAL FORMAT OPTIONS

Option 2: Virtual Education

Families who do not feel comfortable sending their students to receive in-seat instruction may apply to participate in virtual education via Launch, an online education platform which was used by Osage Schools for summer school this year and years prior.

WHAT IS LAUNCH?

Launch has a rigorous K-12 curriculum that is aligned with the Missouri Learning Standards, is currently used by over 270 districts across the State of Missouri, and is staffed by certified educators who live and work in partner districts. Osage teachers will not be teaching Launch courses.

HOW DO I APPLY?

Families can apply during online enrollment through our student information system (<https://sdm.sisk12.com/OT360x3/parent>) for virtual education. Enrollment must be completed by 8 p.m., August 13th.

- Students approved for virtual education will have 7 days from the first day of enrollment in Launch to convert back to in-seat instruction. Otherwise, they must remain in the Launch program for the duration of the semester for which they were approved. The first day of class for Launch is August 24, 2020.
- Students approved for virtual education for the first semester of the 2020-2021 school year can return to in-seat enrollment for the second semester if so desired, or may remain virtual for the duration of the school year.
- If a student is not successful with Launch, he/she may not be approved for future semesters with Launch. Upon approval for virtual education, additional scheduling logistics will be arranged directly with the student's school staff.
- Grades from Launch courses will be transferred to School of the Osage and will factor into the student's GPA.
- Students approved for virtual education may be issued a technology device by Launch.
- The SOTO district will not be providing additional devices.



EDUCATIONAL FORMAT OPTIONS

- Students approved for virtual education can participate in extracurricular activities as long as they meet MSH-SAA requirements. Eligibility requirements will still be in place. For co-curricular activities (i.e. band, choir and speech) students must participate in the in-person class to participate in the activity.
- To help us secure student materials and plan for a successful student-experience, we are asking that all virtual course requests be made no later than August 13, 2020.

MORE ABOUT LAUNCH

ELEMENTARY SCHOOL

Launch's full-time virtual offerings include:

- 6 hours of daily teacher-supported virtual programming
- 25:1 student-teacher ratio
- Full-time teacher support
- Daily workbook activities
- Personalized learning, including individualized support, can be accessed
- ELA, Math, Science & Social Studies instruction
- 5 Related Arts courses (1 hour of each per week): Physical Education, Music, Art,

MIDDLE SCHOOL

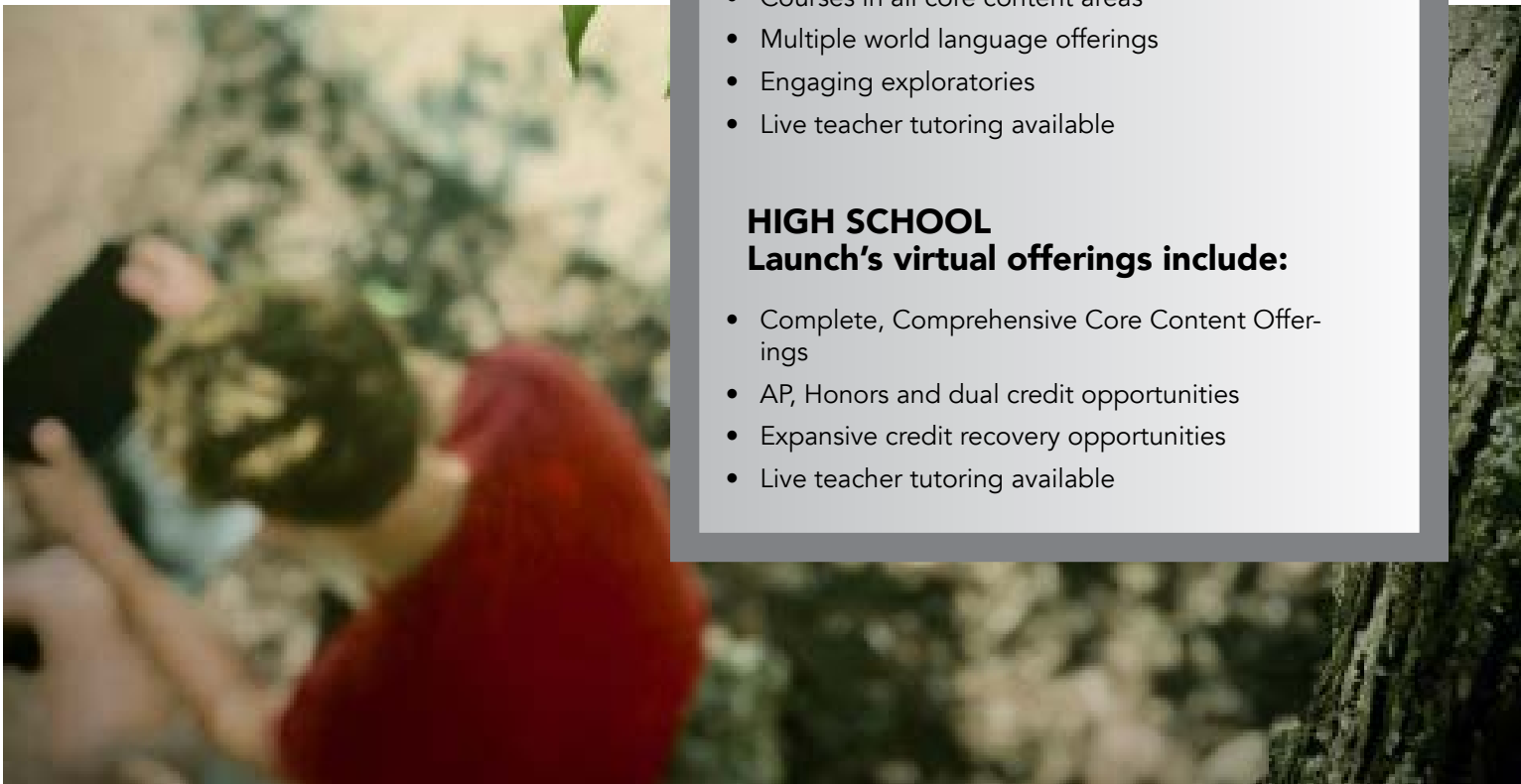
Launch's virtual offerings include:

- Courses in all core content areas
- Multiple world language offerings
- Engaging exploratories
- Live teacher tutoring available

HIGH SCHOOL

Launch's virtual offerings include:

- Complete, Comprehensive Core Content Offerings
- AP, Honors and dual credit opportunities
- Expansive credit recovery opportunities
- Live teacher tutoring available



PROCEDURES FOR COVID-19 INFECTIONS

- Students or staff who display symptoms of COVID-19 while at school will be moved to a designated isolation room within the school building to minimize contact with others until they go home.
- If SOTO School District receives official notification of a student or staff member testing positive for COVID-19 who attended school the day they test positive, the impacted school or classroom (or area determined to be impacted) may be closed for the remainder of the day, or longer if necessary, to allow for contact tracing by the local health department.
- If a building is closed, all school activities at that building will be cancelled or rescheduled.

WHAT IS CONTACT TRACING?

Contact tracing is used by health departments to prevent the spread of infectious disease.

In general, contact tracing involves identifying people who have an infectious disease (cases) and people who they came in contact with (contacts) and working with them to interrupt the spread of disease.

This includes asking people with COVID-19 to isolate and their contacts to quarantine at home voluntarily. Contact tracing is a core disease control activity. It has been used for decades to slow or stop the spread of infectious disease.

Source: The Centers for Disease Control and Prevention (CDC)



PROCEDURES FOR COVID-19 INFECTIONS

- Students and staff who are identified as a close contact of the positive case will not be permitted to return to school until after they have been released by the local health department.
- Students and staff who are not identified as a close contact of the positive case will be permitted to return to school after contact tracing efforts by the local health department allow us to do so.
- While local health departments are not permitted to share the names of positive COVID-19 cases unless permission is granted by the individual, if the school district becomes aware of an official positive COVID-19 case that could impact a school building, staff and families will be notified as soon as possible.
- Students and staff may be contacted to assist with contact tracing efforts, review assigned seating charts, and to determine which individuals the positive case had contact with while contagious.

CONTACT TRACING INVOLVES:

Interviewing people with COVID-19 to identify everyone they had close contact with during the time they may have been infectious.

Notifying contacts of potential exposure.

Referring contacts for COVID-19 testing.

Monitoring contacts for signs & symptoms of COVID-19.

Connecting contacts with services they might need during the self-quarantine period.

Source: The Centers for Disease Control and Prevention (CDC)



RESOURCES

We have consulted with and studied guidance from the following resources.

- Camden County Health Department
- Miller County Health Department
- Morgan County Health Department
- Lake Regional Infectious Disease Staff
- The Centers for Disease Control and Prevention (CDC)
- Missouri Department of Health and Senior Services (DHSS)
- Department of Elementary and Secondary Education (DESE)
- The Missouri School Board Association (MSBA)
- The American Academy of Pediatrics (AAP)
- Occupational Safety and Health Administration (OSHA)
- Missouri State Teachers Association (MSTA)
- Missouri National Education Association (MNEA)
- Missouri State High School Activities Association (MSHSAA)

The School of the Osage School District's back to school plan for the 2020-2021 school year is subject to change if local conditions warrant a tightening or loosening of any of the proposed guidelines.



School of the Osage
2020-2021

August-20						
S	M	Tu	W	Th	F	S
						1
2	3	4	5	6	7	8
9	10	11	12	13	14	15
16	17	18	19	20	21	22
23	24	25	26	27	28	29
30	31					

September-20						
S	M	Tu	W	Th	F	S
		1	2	3	4	5
6	7	8	9	10	11	12
13	14	15	16	17	18	19
20	21	22	23	24	25	26
27	28	29	30			

October-20						
S	M	Tu	W	Th	F	S
				1	2	3
4	5	6	7	8	9	10
11	12	13	14	15	16	17
18	19	20	21	22	23	24
25	26	27	28	29	30	31

November-20						
S	M	Tu	W	Th	F	S
1	2	3	4	5	6	7
8	9	10	11	12	13	14
15	16	17	18	19	20	21
22	23	24	25	26	27	28
29	30					

December-20						
S	M	Tu	W	Th	F	S
		1	2	3	4	5
6	7	8	9	10	11	12
13	14	15	16	17	18	19
20	21	22	23	24	25	26
27	28	29	30	31		

January-21						
S	M	Tu	W	Th	F	S
					1	2
3	4	5	6	7	8	9
10	11	12	13	14	15	16
17	18	19	20	21	22	23
24	25	26	27	28	29	30
31						

February-21						
S	M	Tu	W	Th	F	S
	1	2	3	4	5	6
7	8	9	10	11	12	13
14	15	16	17	18	19	20
21	22	23	24	25	26	27
28						

March-21						
S	M	Tu	W	Th	F	S
	1	2	3	4	5	6
7	8	9	10	11	12	13
14	15	16	17	18	19	20
21	22	23	24	25	26	27
28	29	30	31			

April-21						
S	M	Tu	W	Th	F	S
				1	2	3
4	5	6	7	8	9	10
11	12	13	14	15	16	17
18	19	20	21	22	23	24
25	26	27	28	29	30	

May-21						
S	M	Tu	W	Th	F	S
						1
2	3	4	5	6	7	8
9	10	11	12	13	14	15
16	17	18	19	20	21	22
23	24	25	26	27	28	29
30	31					

Start Day: August 25

Last Day: May 21

Distance Learning Days

Parent/Teacher Conferences: Oct. 26 (11am-7 pm), and
February 22 (11 am- 7 pm)

Parent Orientation to Virtual Learning: August 24

Teacher PD/Workshop Days: Aug. 17-21, Nov. 16, Jan. 4, May 24

No School Days: Sept. 7 (Labor Day), Oct. 26, Nov. 25-27 (Thanksgiving),

Dec. 21-Jan. 4, Jan. 18 (MLK), Feb. 15 (Pres Day), Feb. 22

March 15-19 (Spring Break), April 2, April 5

New Teachers: Aug 4 - 7

High School Graduation: May 13

Open House Dates are TBD

Centralized Registration - August 12 and 13

Quarter Ends:

1st Quarter - 10/16 (38 days)

2nd Quarter - 12/18 (40 days)

3rd Quarter - 3/12 (46 days)

4th Quarter - 05/21 (43 days)

2nd Revision - BOE Approved 6/22/20

Revised and Board Approved 2/25/20

BOE Approved 10/28/19



SOTO Model for School Continuity

In Person, Distance and Virtual-Learning Structures 2020-2021

Fall Re-entry Option 1

Scenario 1: Four days in person with one day of planned distance learning.*

Monday Distance learning	Tuesday All students in-person learning	Wednesday All students in-person learning	Thursday All students in-person learning	Friday All students in-person learning
-----------------------------	--	--	---	---

Scenario 2: Modified week with two in-person groups scheduled.*

Monday Distance learning	Tuesday Group A: In Person	Wednesday Group A: In Person	Thursday Group B: In Person	Friday Group B: In Person
	Group B: Distance**	Group B: Distance**	Group A: Distance**	Group A: Distance**

Scenario 3: Full distance learning, with no in-person attendance of students, except those with identified needs.**

Monday Distance learning**	Tuesday Distance learning**	Wednesday Distance learning**	Thursday Distance learning**	Friday Distance learning**
-------------------------------	--------------------------------	----------------------------------	---------------------------------	-------------------------------

Scenario 4: Full distance learning, with no in-person attendance for ALL students.

Monday Distance learning	Tuesday Distance learning	Wednesday Distance learning	Thursday Distance learning	Friday Distance learning
-----------------------------	------------------------------	--------------------------------	-------------------------------	-----------------------------

Fall Re-entry Option 2

Scenario 5: Full Virtual Education through LAUNCH.***

Monday Virtual Learning via LAUNCH	Tuesday Virtual Learning via LAUNCH	Wednesday Virtual Learning via LAUNCH	Thursday Virtual Learning via LAUNCH	Friday Virtual Learning via LAUNCH
---------------------------------------	--	--	---	---------------------------------------

*These scenarios include the option for students to participate remotely if they are homebound or sick.

**This scenario includes an exception for students with high needs (as designated by an IEP or 504).

***This option is a full virtual option offered through LAUNCH and is selected by the family through opt-in process during registration.

Note: Fall re-entry options are subject to change based on local health conditions.